

2026 Child Care Market Survey Results

Published June 2026



Wisconsin Department of
Children and Families

The Department of Children and Families is an equal opportunity employer and service provider. If you have a disability and need to access services, receive information in an alternate format, or need information translated to another language, please call the

Division of Early Care and Education at 608-422-6002.

Individuals who are deaf, hard of hearing, deaf-blind, or speech disabled can use the free Wisconsin Relay Service (WRS) – 711 to contact the department.

Division of Early Care and Education
Department of Children and Families
201 West Washington Avenue
Madison, WI 53703

Table of Contents

2026 Child Care Market Survey Results	1
Section 1: Introduction	4
Key findings	4
Section 2: Market Rate Survey	5
Purpose	5
Data Collection	5
Data Analysis	6
Results	7
Section 3: Conclusion	12
Appendices	13
Appendix 1: Market Rate Survey Results by County and Tribal Nations	13

Section 1: Introduction

The Wisconsin Department of Children and Families (DCF) is committed to ensuring that all Wisconsin families have access to quality, affordable early care and education. A key component of this ongoing work is the [Wisconsin Shares child care subsidy program](#), which helps make child care more affordable for working families.

Wisconsin Shares is funded through the federal [Child Care Development Fund \(CCDF\)](#). The CCDF funding provided to states, tribes, and territories is administered by the federal Administration for Children and Families (ACF) Office of Child Care (OCC) and is the primary public funding source for child care services across the state.

CCDF regulations require Lead Agencies to certify that their child care subsidy payment rates are sufficient to ensure equal access to care for children who are eligible for subsidy when compared to children in the private pay market. In addition, Lead Agencies must complete two analyses every three years:

1. A Market Rate Survey (MRS) to understand child care provider prices and the buying power of the child care subsidy, and
2. A Narrow Cost Analysis to understand the true costs of providing quality child care.

The [2024 Market Rate Survey](#) meets these CCDF requirements. This 2026 Market Rate Survey builds on information from the 2024 and [2025 Market Rate Survey](#) and provides DCF, policymakers, and other child care stakeholders with up-to-date information about the price of child care and the buying power of Wisconsin Shares.

Key Findings

- Child care provider prices have risen in recent years, including between the last administration of the Market Rate Survey in March 2025 and the most recent administration of the survey in December 2025.
- The buying power of Wisconsin Shares has improved since March 2025. In March 2025, the maximum Wisconsin Shares rate was at or above the price of 41 percent of slots. In December 2025 the maximum Wisconsin Shares rate was at or above the price of 60 percent of slots.

- The improved buying power of Wisconsin Shares, despite provider prices continuing to rise, is the result of an investment in the 2025-27 State Budget that allowed DCF to increase maximum Wisconsin Shares rates in October 2025.

Section 2: Market Rate Survey

Purpose

The Market Rate Survey is intended to show:

- Full-time provider prices at various geographies, provider types, and age ranges; and
- The buying power of the Wisconsin Shares subsidy.

Data Collection

Provider prices for the Market Rate Survey are collected by [Thriving Wisconsin](#) and Wisconsin's [Child Care Resource & Referral Network](#) through the Business Information Form (BIF). The BIF is the source for estimates of monthly market rates for full-time child care by provider type, age group, and geographic location. An example of the BIF can be viewed on the [4C website](#), a member of the Child Care Resource and Referral Network.

The following types of regulated child care providers were surveyed as part of the 2026 Market Rate Survey:

- Licensed family providers, who provide care for between four and eight children. This care is usually in the provider's home.
- Licensed group providers, which provide care for nine or more children. These centers are usually located somewhere other than a residence and may be small or large in size.

As shown in Table 1, 71 percent of licensed providers participated in the 2026 Market Rate Survey, and 40 percent of licensed providers met all criteria to be included in the analysis.¹

Table 1 – 2026 Market Rate Survey Response Rate

Total Licensed Child Care Providers	Total Surveys Received	Response Rate	Total Surveys Used in Analysis	Percent of Licensed Providers Used for Analysis
3,940	2,790	71%	1,578	40%

Data for this 2026 Market Rate Survey is current as of December 2025.

Data Analysis

This analysis is focused on:

- **Prices for full-time care**, meaning that part-time prices are excluded.
- **Prices in the private market**, meaning that prices for providers serving more than 75 percent of children receiving Wisconsin Shares are excluded.

The analysis is specific to county, provider type (licensed family provider or licensed group provider), and the child’s age for the slot.

To conduct the analysis, we compared each provider’s slot price to the [applicable Wisconsin Shares maximum rate](#) to determine whether the maximum Wisconsin Shares rate was at or above the price for the slot. When the applicable Wisconsin Shares maximum rate was at or above the price, that slot was considered affordable. We then divided the number of affordable slots by the number of total slots to get the percentage of affordable slots statewide.

It’s important to note that the term “affordable” has a specific definition for the purpose of this analysis. “Affordable” is used to describe a slot for which the maximum Wisconsin Shares rate is at or above the provider price for that slot. It is not a general measure of whether the price of child care is affordable for families. For example, most families who utilize Wisconsin Shares are authorized for less than the

¹ In order to analyze the full-time price charged to the private-paying market, DCF excluded the following providers from the analysis: providers without a weekly, monthly, or daily full-time price; providers with more than 75% of children participating in Wisconsin Shares; providers that are not open at least 5 hours per day for 5 days per week; and providers with data entry errors. This means that instead of using 71% of licensed providers to assess prices, DCF used 40% of licensed providers to assess prices. To verify these exclusions did not bias the results, DCF also analyzed the prices without all of these exclusions, including 57% of licensed providers. This resulted a comparable percentage of affordable slots as those shown in Table 2.

maximum Wisconsin Shares rate. Likewise, most families are not eligible for Wisconsin Shares and pay the full price out of pocket.

Results

According to this analysis, **60 percent of child care slots statewide are affordable**, meaning that the price of the slot is at or below the applicable maximum Wisconsin Shares rate for that slot.

Table 2 – Percentage of Affordable Slots, 2025

Available Slot Data	MRS 2026
Affordable Slots	47,538
Available Slots	79,185
Percentage of Affordable Slots	60%

Sixty percent is below the target for affordability. The affordability threshold set by both the federal [Administration for Children and Families](#) and [Wis. Stat. s. 49.155](#) is that 75 percent of child care slots should be affordable.

Sixty percent represents an increase from the prior Market Rate Survey, which found that in March 2025, 41 percent of child care slots were considered affordable.

The growth of the percentage of affordable slots between March and December 2025 corresponds with an increase in Wisconsin Shares rates. As part of the 2025-2027 Biennial Budget, the maximum rates were set at or above 75 percent of child care slots, based on the 2025 Market Rate Survey. These new rates went into effect in October 2025. Many families that participate in Wisconsin Shares saw an [increase in their monthly subsidy benefit amount](#). The intention of this change was to align subsidies with federal regulations and better reflect the actual cost of care.

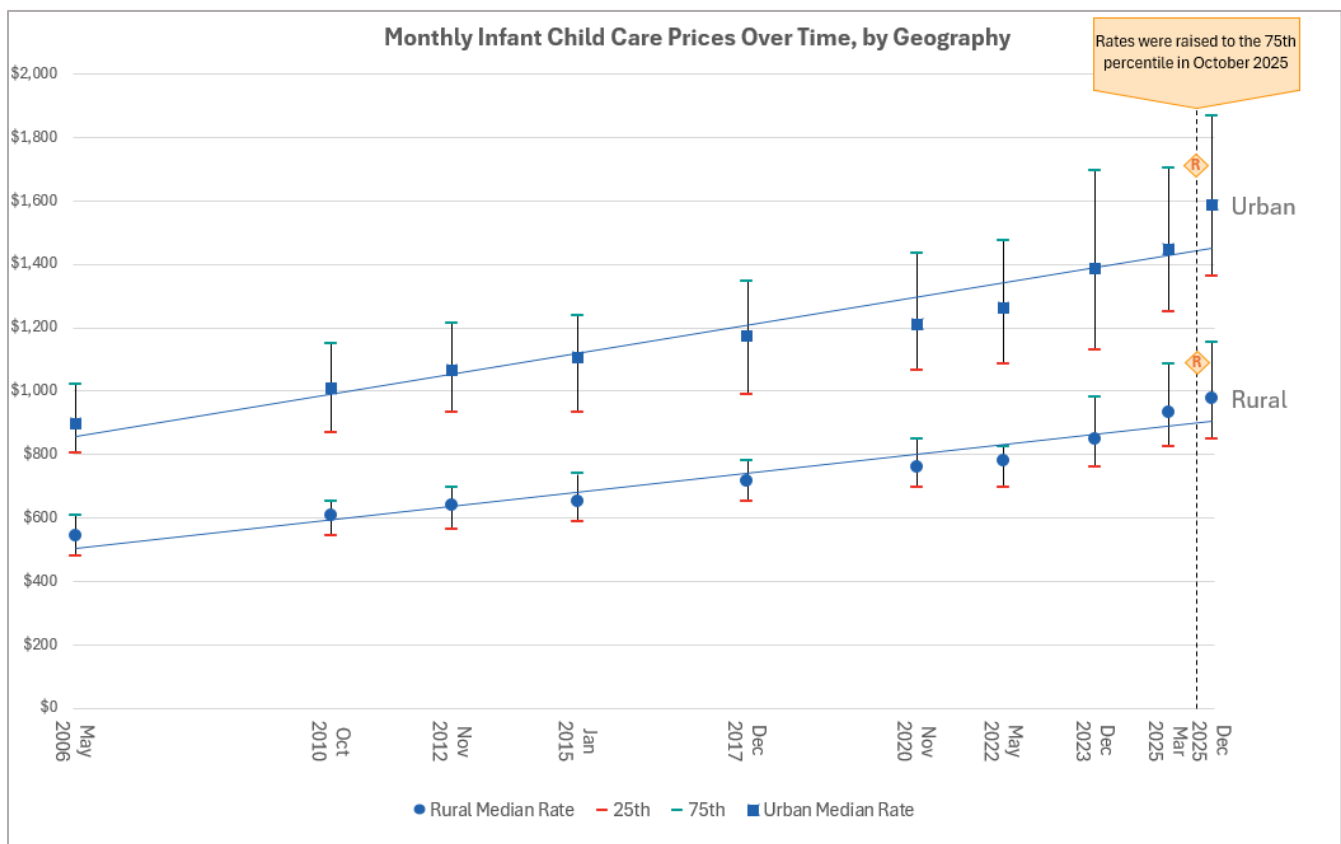
It is important to note that between the March 2025 survey, which informed the new maximum rates, and the most recent survey in December 2025, provider prices continued to rise in many counties and across age groups and provider types. This increase in provider prices in 2025 meant the updated maximum subsidy rates had already dropped below the 75 percent affordability threshold by the time the provider prices were examined again in December.

If the Biennial Budget maximum Wisconsin Shares rate increase had not happened in October 2025, just 25 percent of slots would have been considered affordable in December 2025.

To illustrate the change in provider prices over time, Figure 1 shows prices for infant child care in rural and, separately, urban areas between 2006 and December 2025. The round (rural) and square (urban) markers indicate the median price (i.e., 50th percentile) each time the Market Rate Survey was conducted. The lower (red) and upper (green) markers indicate the 25th and 75th percentile of price, respectively. The vertical dashed line represents the October 2025 adjustment to the Wisconsin Shares maximum rate, with the “R” markers showing the approximate rate. Before October 2025, the last increase in Wisconsin Shares maximum rates was in January 2022.

Provider prices have climbed over time, with urban prices being consistently more than rural prices. Since 2022, provider prices have increased at a faster pace than prior years. Comparing the two most recent Market Rate Surveys, in March 2025, the median urban rate was \$1,447 and the median rural rate was \$934. In December 2025, the median urban rate was \$1,587 and the median rural rate was \$978.

Figure 1 – Monthly Infant Child Care Prices from 2006 to 2026, by Geography



It is important to note that [Child Care Counts](#) payments to providers were reduced by half in May 2023 in order to stay within the budget allocated for the program. According to research conducted by the UW-Madison Institute for Research on Poverty, providers used Child Care Counts funds to cover core

expenses such as payroll, materials, rent, and utilities, thereby avoiding passing those costs along to families. When Child Care Counts payments were reduced, providers were forced to pass on some of these costs to families in the form of increased prices. In July 2025, the Child Care Counts program ended and the Child Care Bridge Payments program began. Child Care Bridge Payments were funded in the 2025-27 Wisconsin State Budget to run from July 2025 to June 2026. Once Child Care Bridge Payments end, we expect to see a similar pattern of providers covering expenses through increasing prices.

For more information on the range of provider prices across the state, Tables 3-6 show the 25th, 50th, and 75th percentile of weekly full-time prices in communities at different levels of urbanicity (0-24 percent urban, 25-49 percent urban, 51-74 percent urban, and 75-100 percent urban).

The prices are specific to provider type and age group. For example, in the following tables: In communities that are between 0 and 24 percent urban, 25 percent of slots for children aged 0 to 1 in licensed family child program are at or below \$150 per week, 50 percent of slots are at or below \$180 per week, and 75 percent of slots are at or below \$200 per week.

Figure 2 provides a map showing which zone of urbanicity each county is in.

Weekly Full-time Provider Prices by Percent of Urbanicity

Table 3 – Region A Provider Price Ranges

Region	Percent of Urban	Licensed Type	Age Group	25 th Percentile	50 th Percentile	75 th Percentile
A	0-24%	Family	0 to 1	\$150.00	\$180.00	\$200.00
A	0-24%	Family	2 to 3	\$150.00	\$175.00	\$200.00
A	0-24%	Family	4 to 5	\$150.00	\$170.00	\$200.00
A	0-24%	Family	6+	\$145.00	\$165.00	\$191.50
A	0-24%	Group	0 to 1	\$210.00	\$235.00	\$273.39
A	0-24%	Group	2 to 3	\$196.00	\$220.00	\$250.00
A	0-24%	Group	4 to 5	\$175.00	\$195.00	\$225.00
A	0-24%	Group	6+	\$165.00	\$185.00	\$215.00

Table 4 – Region B Provider Price Range

Region	Percent of Urban	Licensed Type	Age Group	25 th Percentile	50 th Percentile	75 th Percentile
B	25-49%	Family	0 to 1	\$175.00	\$190.00	\$225.00
B	25-49%	Family	2 to 3	\$150.00	\$180.00	\$200.00

B	25-49%	Family	4 to 5	\$150.00	\$175.00	\$200.00
B	25-49%	Family	6+	\$150.00	\$170.00	\$200.00
B	25-49%	Group	0 to 1	\$265.00	\$300.00	\$320.00
B	25-49%	Group	2 to 3	\$240.00	\$270.00	\$300.00
B	25-49%	Group	4 to 5	\$215.52	\$245.00	\$280.00
B	25-49%	Group	6+	\$200.00	\$230.00	\$256.00

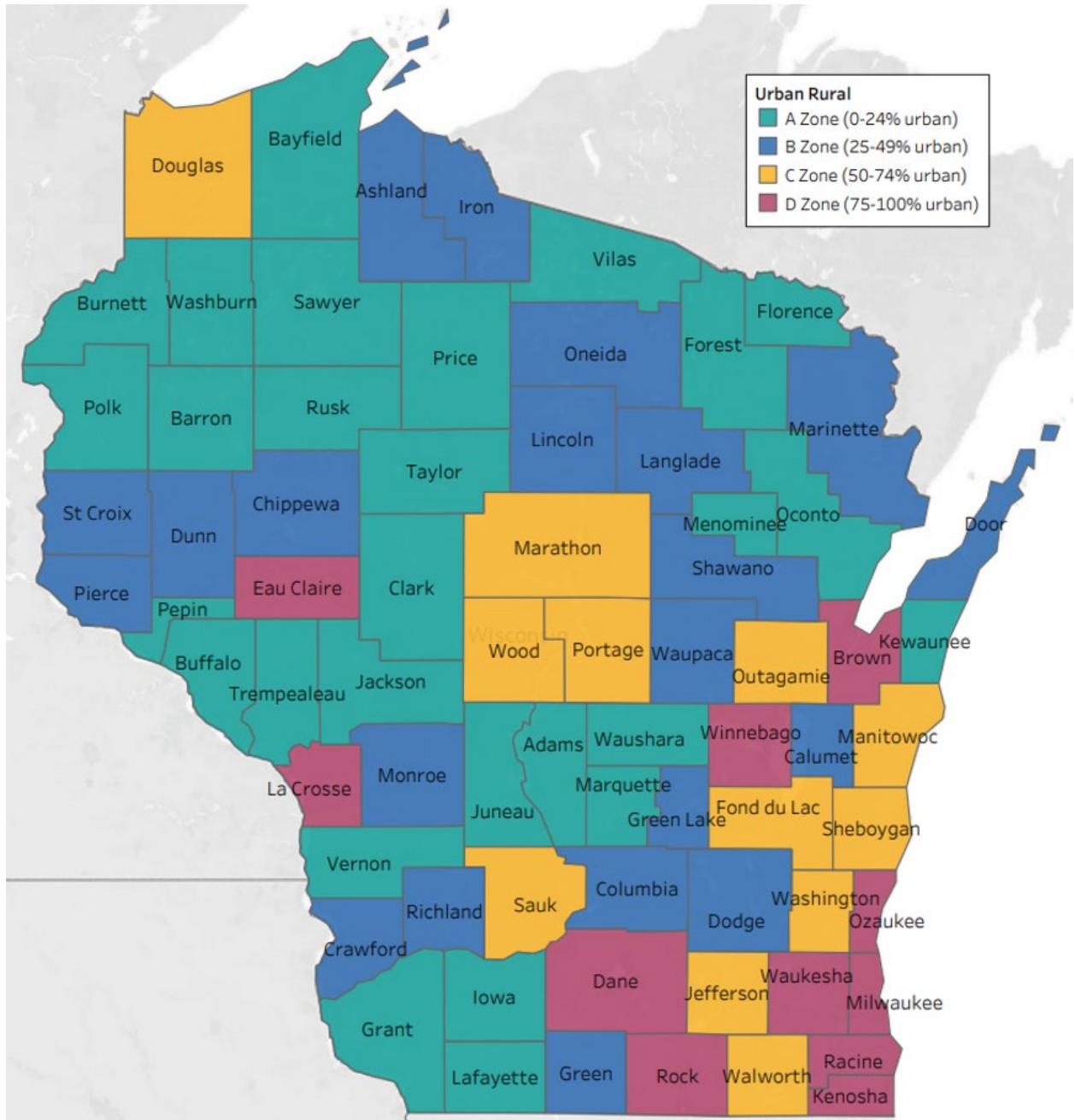
Table 5 – Region C Provider Price Ranges

Region	Percent of Urban	Licensed Type	Age Group	25 th Percentile	50 th Percentile	75 th Percentile
C	50-74%	Family	0 to 1	\$190.00	\$220.00	\$250.00
C	50-74%	Family	2 to 3	\$185.00	\$200.00	\$235.00
C	50-74%	Family	4 to 5	\$180.00	\$200.00	\$230.00
C	50-74%	Family	6+	\$175.00	\$200.00	\$227.00
C	50-74%	Group	0 to 1	\$265.00	\$307.00	\$325.00
C	50-74%	Group	2 to 3	\$250.00	\$278.00	\$308.00
C	50-74%	Group	4 to 5	\$225.00	\$247.00	\$285.00
C	50-74%	Group	6+	\$200.00	\$230.00	\$275.00

Table 6 – Region D Provider Price Ranges

Region	Percent of Urban	Licensed Type	Age Group	25 th Percentile	50 th Percentile	75 th Percentile
D	75-100%	Family	0 to 1	\$250.00	\$299.00	\$350.00
D	75-100%	Family	2 to 3	\$225.00	\$271.65	\$321.30
D	75-100%	Family	4 to 5	\$210.00	\$259.00	\$300.00
D	75-100%	Family	6+	\$200.00	\$240.00	\$287.47
D	75-100%	Group	0 to 1	\$320.00	\$369.00	\$434.43
D	75-100%	Group	2 to 3	\$286.00	\$325.00	\$390.00
D	75-100%	Group	4 to 5	\$250.00	\$290.00	\$345.00
D	75-100%	Group	6+	\$220.00	\$256.00	\$302.00

Figure 2 – Wisconsin Shares Child Care Subsidy Rate Zones



Section 3: Conclusion

The Market Rate Survey demonstrates that:

- Child care provider prices have increased over time, including between the Market Rate Survey in March 2025 and the most recent survey in December 2025.
- The buying power of Wisconsin Shares has improved since the last Market Rate Survey. This is due to an increase in the maximum Wisconsin Shares rate in October 2025 included in the 2025-27 Biennial Budget.
- While the buying power of Wisconsin Shares has increased, Wisconsin is below the state- and federally-set 75 percent affordability threshold.

DCF remains committed to finding solutions and long-term investments that support making child care more affordable for Wisconsin families and empower child care programs and educators in providing the quality care all Wisconsin kids deserve. DCF will continue to conduct this Market Rate Analysis to inform these critical efforts.

Appendices

Appendix 1: Market Rate Survey Results by County and Tribal Nations

Geography	Regulation Type	Age Group	County 25th	County 50th	County 75th	Mean Weekly Rate	Surveyed Providers	Licensed Providers in County	Affordable Slots	Available Slots	Percent Affordable
Adams	Family	0 to 1	\$190.00	\$190.00	\$250.00	\$220.00	2	3	16	16	100%
Adams	Family	2 to 3	\$155.00	\$155.00	\$250.00	\$202.50	2	3	16	16	100%
Adams	Family	4 to 5	\$140.00	\$140.00	\$250.00	\$195.00	2	3	16	16	100%
Adams	Family	6+	\$140.00	\$140.00	\$250.00	\$195.00	2	3	16	16	100%
Adams	Group	0 to 1	N/A	N/A	N/A	N/A	0	1	N/A	N/A	N/A
Adams	Group	2 to 3	N/A	N/A	N/A	N/A	0	1	N/A	N/A	N/A
Adams	Group	4 to 5	N/A	N/A	N/A	N/A	0	1	N/A	N/A	N/A
Adams	Group	6+	N/A	N/A	N/A	N/A	0	1	N/A	N/A	N/A
Ashland	Family	0 to 1	\$145.00	\$150.00	\$190.00	\$167.50	10	15	64	80	80%
Ashland	Family	2 to 3	\$135.00	\$150.00	\$175.00	\$159.50	10	15	56	80	70%
Ashland	Family	4 to 5	\$135.00	\$145.00	\$170.00	\$154.50	10	15	48	80	60%
Ashland	Family	6+	\$135.00	\$150.00	\$170.00	\$158.13	8	15	32	64	50%
Ashland	Group	0 to 1	\$212.00	\$212.00	\$212.00	\$212.00	1	4	40	40	100%
Ashland	Group	2 to 3	\$212.00	\$212.00	\$212.00	\$212.00	1	4	40	40	100%
Ashland	Group	4 to 5	\$196.00	\$196.00	\$196.00	\$196.00	1	4	40	40	100%
Ashland	Group	6+	\$150.50	\$150.50	\$150.50	\$150.50	1	4	40	40	100%
Barron	Family	0 to 1	\$150.00	\$180.00	\$200.00	\$172.14	7	12	40	56	71%
Barron	Family	2 to 3	\$140.00	\$180.00	\$185.00	\$168.57	7	12	24	56	43%
Barron	Family	4 to 5	\$140.00	\$180.00	\$185.00	\$168.57	7	12	24	56	43%
Barron	Family	6+	\$140.00	\$150.00	\$185.00	\$160.83	6	12	32	48	67%
Barron	Group	0 to 1	\$220.00	\$220.00	\$235.00	\$223.73	6	12	200	235	85%
Barron	Group	2 to 3	\$206.00	\$215.00	\$220.00	\$211.20	6	12	200	235	85%
Barron	Group	4 to 5	\$176.00	\$210.00	\$210.00	\$193.79	6	12	235	235	100%
Barron	Group	6+	\$150.00	\$165.00	\$200.00	\$175.67	6	12	235	235	100%

Bayfield	Family	0 to 1	N/A	N/A	N/A	N/A	0	1	N/A	N/A	N/A
Bayfield	Family	2 to 3	N/A	N/A	N/A	N/A	0	1	N/A	N/A	N/A
Bayfield	Family	4 to 5	N/A	N/A	N/A	N/A	0	1	N/A	N/A	N/A
Bayfield	Family	6+	N/A	N/A	N/A	N/A	0	1	N/A	N/A	N/A
Bayfield	Group	0 to 1	\$225.00	\$225.00	\$225.00	\$225.00	1	4	40	40	100%
Bayfield	Group	2 to 3	\$225.00	\$225.00	\$225.00	\$225.00	1	4	40	40	100%
Bayfield	Group	4 to 5	\$215.00	\$215.00	\$215.00	\$215.00	1	4	40	40	100%
Bayfield	Group	6+	\$215.00	\$215.00	\$215.00	\$215.00	1	4	0	40	0%
Brown	Family	0 to 1	\$190.00	\$200.00	\$285.00	\$219.31	15	30	88	119	74%
Brown	Family	2 to 3	\$190.00	\$200.00	\$200.00	\$200.58	15	30	96	119	81%
Brown	Family	4 to 5	\$170.00	\$200.00	\$200.00	\$196.15	14	30	96	111	86%
Brown	Family	6+	\$162.00	\$200.00	\$200.00	\$178.00	10	30	80	80	100%
Brown	Group	0 to 1	\$308.00	\$348.00	\$355.00	\$332.60	30	95	2698	3277	82%
Brown	Group	2 to 3	\$270.00	\$302.00	\$312.00	\$291.48	31	95	2416	3348	72%
Brown	Group	4 to 5	\$235.00	\$264.00	\$282.00	\$256.33	42	95	2992	3798	79%
Brown	Group	6+	\$225.00	\$250.00	\$270.00	\$242.25	45	95	2036	3798	54%
Buffalo	Family	0 to 1	\$190.00	\$225.00	\$225.00	\$211.54	2	8	5	13	38%
Buffalo	Family	2 to 3	\$180.00	\$225.00	\$225.00	\$207.69	2	8	0	13	0%
Buffalo	Family	4 to 5	\$180.00	\$225.00	\$225.00	\$207.69	2	8	0	13	0%
Buffalo	Family	6+	\$180.00	\$225.00	\$225.00	\$207.69	2	8	0	13	0%
Buffalo	Group	0 to 1	N/A	N/A	N/A	N/A	0	1	N/A	N/A	N/A
Buffalo	Group	2 to 3	N/A	N/A	N/A	N/A	0	1	N/A	N/A	N/A
Buffalo	Group	4 to 5	N/A	N/A	N/A	N/A	0	1	N/A	N/A	N/A
Buffalo	Group	6+	N/A	N/A	N/A	N/A	0	1	N/A	N/A	N/A
Burnett	Family	0 to 1	N/A	N/A	N/A	N/A	0	2	N/A	N/A	N/A
Burnett	Family	2 to 3	N/A	N/A	N/A	N/A	0	2	N/A	N/A	N/A
Burnett	Family	4 to 5	\$150.00	\$150.00	\$150.00	\$150.00	1	2	6	6	100%
Burnett	Family	6+	\$150.00	\$150.00	\$150.00	\$150.00	1	2	6	6	100%
Burnett	Group	0 to 1	\$225.00	\$225.00	\$250.00	\$231.80	2	5	103	103	100%
Burnett	Group	2 to 3	\$225.00	\$225.00	\$250.00	\$231.80	2	5	103	103	100%
Burnett	Group	4 to 5	\$158.00	\$158.00	\$175.00	\$162.62	2	5	103	103	100%
Burnett	Group	6+	\$158.00	\$158.00	\$175.00	\$162.62	2	5	103	103	100%
Calumet	Family	0 to 1	\$190.00	\$190.00	\$230.00	\$210.00	3	4	16	16	100%
Calumet	Family	2 to 3	\$190.00	\$190.00	\$190.00	\$190.00	3	4	8	16	50%
Calumet	Family	4 to 5	\$190.00	\$190.00	\$190.00	\$190.00	3	4	8	16	50%
Calumet	Family	6+	\$190.00	\$190.00	\$190.00	\$190.00	2	4	16	16	100%
Calumet	Group	0 to 1	\$320.00	\$325.00	\$345.00	\$318.04	4	9	80	370	22%

Calumet	Group	2 to 3	\$310.00	\$315.00	\$345.00	\$308.64	4	9	80	370	22%
Calumet	Group	4 to 5	\$229.00	\$285.00	\$290.00	\$263.31	6	9	182	540	34%
Calumet	Group	6+	\$225.00	\$255.00	\$300.00	\$258.97	6	9	295	540	55%
Chippewa	Family	0 to 1	\$150.00	\$225.00	\$226.00	\$208.13	8	20	24	64	38%
Chippewa	Family	2 to 3	\$164.00	\$225.00	\$242.50	\$204.06	9	20	24	72	33%
Chippewa	Family	4 to 5	\$164.00	\$225.00	\$242.50	\$204.06	9	20	24	72	33%
Chippewa	Family	6+	\$150.00	\$205.00	\$225.00	\$185.72	9	20	32	72	44%
Chippewa	Group	0 to 1	\$275.00	\$305.00	\$320.00	\$302.36	10	27	596	771	77%
Chippewa	Group	2 to 3	\$275.00	\$300.00	\$300.00	\$292.00	10	27	596	771	77%
Chippewa	Group	4 to 5	\$250.00	\$280.00	\$294.00	\$276.32	10	27	298	771	39%
Chippewa	Group	6+	\$215.00	\$256.00	\$283.00	\$247.33	9	27	434	609	71%
Clark	Family	0 to 1	\$150.00	\$150.00	\$200.00	\$168.89	9	11	48	72	67%
Clark	Family	2 to 3	\$150.00	\$150.00	\$200.00	\$171.00	10	11	48	80	60%
Clark	Family	4 to 5	\$150.00	\$150.00	\$200.00	\$170.00	10	11	48	80	60%
Clark	Family	6+	\$150.00	\$150.00	\$200.00	\$161.82	11	11	48	88	55%
Clark	Group	0 to 1	\$215.00	\$220.00	\$275.00	\$233.48	6	8	179	283	63%
Clark	Group	2 to 3	\$205.00	\$215.00	\$250.00	\$220.30	6	8	179	283	63%
Clark	Group	4 to 5	\$185.00	\$195.00	\$225.00	\$200.27	6	8	179	283	63%
Clark	Group	6+	\$185.00	\$195.00	\$215.00	\$190.05	6	8	283	283	100%
Columbia	Family	0 to 1	\$150.00	\$200.00	\$250.00	\$225.00	4	8	24	32	75%
Columbia	Family	2 to 3	\$150.00	\$200.00	\$237.50	\$221.88	4	8	24	32	75%
Columbia	Family	4 to 5	\$150.00	\$200.00	\$237.50	\$209.38	4	8	16	32	50%
Columbia	Family	6+	\$150.00	\$200.00	\$237.50	\$195.83	3	8	16	24	67%
Columbia	Group	0 to 1	\$275.00	\$275.00	\$305.00	\$283.94	8	23	392	467	84%
Columbia	Group	2 to 3	\$245.00	\$255.00	\$280.00	\$257.76	9	23	422	497	85%
Columbia	Group	4 to 5	\$200.00	\$230.00	\$245.00	\$220.97	11	23	572	572	100%
Columbia	Group	6+	\$185.00	\$200.00	\$230.00	\$202.17	9	23	486	486	100%
Crawford	Family	0 to 1	\$185.00	\$185.00	\$187.50	\$186.25	2	2	16	16	100%
Crawford	Family	2 to 3	\$175.00	\$175.00	\$175.00	\$175.00	2	2	16	16	100%
Crawford	Family	4 to 5	\$175.00	\$175.00	\$175.00	\$175.00	2	2	16	16	100%
Crawford	Family	6+	\$175.00	\$175.00	\$175.00	\$175.00	1	2	8	8	100%
Crawford	Group	0 to 1	\$239.42	\$239.42	\$239.42	\$239.42	1	3	50	50	100%
Crawford	Group	2 to 3	\$239.42	\$239.42	\$239.42	\$239.42	1	3	50	50	100%
Crawford	Group	4 to 5	\$215.52	\$215.52	\$215.52	\$215.52	1	3	50	50	100%
Crawford	Group	6+	\$206.72	\$206.72	\$206.72	\$206.72	1	3	50	50	100%
Dane	Family	0 to 1	\$265.00	\$325.00	\$375.00	\$336.18	87	132	455	671	68%
Dane	Family	2 to 3	\$250.00	\$295.00	\$350.00	\$313.47	89	132	473	687	69%

Dane	Family	4 to 5	\$250.00	\$287.60	\$340.00	\$304.41	87	132	497	673	74%
Dane	Family	6+	\$220.00	\$275.00	\$325.00	\$291.12	68	132	370	529	70%
Dane	Group	0 to 1	\$395.00	\$460.00	\$511.48	\$457.69	105	301	6535	10179	64%
Dane	Group	2 to 3	\$342.80	\$396.72	\$435.00	\$390.89	130	301	6723	12029	56%
Dane	Group	4 to 5	\$300.00	\$350.00	\$383.00	\$344.63	144	301	6930	12948	54%
Dane	Group	6+	\$250.00	\$302.00	\$364.00	\$305.33	100	301	5505	9395	59%
Dodge	Family	0 to 1	\$200.00	\$200.00	\$220.00	\$210.00	2	8	16	16	100%
Dodge	Family	2 to 3	\$150.00	\$150.00	\$200.00	\$175.00	2	8	16	16	100%
Dodge	Family	4 to 5	\$150.00	\$150.00	\$175.00	\$162.50	2	8	16	16	100%
Dodge	Family	6+	\$150.00	\$150.00	\$175.00	\$162.50	2	8	16	16	100%
Dodge	Group	0 to 1	\$253.00	\$280.00	\$300.00	\$280.69	10	27	906	1042	87%
Dodge	Group	2 to 3	\$230.00	\$240.00	\$275.00	\$250.95	10	27	818	1042	79%
Dodge	Group	4 to 5	\$207.00	\$230.00	\$250.00	\$229.80	10	27	906	1042	87%
Dodge	Group	6+	\$180.00	\$212.00	\$240.00	\$208.00	9	27	858	858	100%
Door	Family	0 to 1	\$185.00	\$185.00	\$185.00	\$185.00	1	1	8	8	100%
Door	Family	2 to 3	\$185.00	\$185.00	\$185.00	\$185.00	1	1	8	8	100%
Door	Family	4 to 5	\$185.00	\$185.00	\$185.00	\$185.00	1	1	8	8	100%
Door	Family	6+	\$185.00	\$185.00	\$185.00	\$185.00	1	1	8	8	100%
Door	Group	0 to 1	\$260.00	\$260.00	\$260.00	\$269.85	2	8	203	203	100%
Door	Group	2 to 3	\$250.00	\$250.00	\$250.00	\$245.15	4	8	262	262	100%
Door	Group	4 to 5	\$230.00	\$240.00	\$240.00	\$233.59	4	8	262	262	100%
Door	Group	6+	\$220.00	\$235.00	\$235.00	\$227.81	4	8	262	262	100%
Douglas	Family	0 to 1	\$175.00	\$200.00	\$200.00	\$194.74	5	11	30	38	79%
Douglas	Family	2 to 3	\$175.00	\$200.00	\$200.00	\$189.47	5	11	30	38	79%
Douglas	Family	4 to 5	\$175.00	\$175.00	\$200.00	\$184.21	5	11	24	38	63%
Douglas	Family	6+	\$175.00	\$175.00	\$225.00	\$193.33	4	11	16	30	53%
Douglas	Group	0 to 1	\$206.00	\$220.00	\$220.00	\$217.14	3	15	154	154	100%
Douglas	Group	2 to 3	\$196.00	\$200.00	\$200.00	\$206.16	3	15	154	154	100%
Douglas	Group	4 to 5	\$186.00	\$200.00	\$200.00	\$197.70	3	15	154	154	100%
Douglas	Group	6+	\$125.00	\$181.00	\$181.00	\$171.11	3	15	119	154	77%
Dunn	Family	0 to 1	\$175.00	\$180.00	\$250.00	\$217.83	6	13	24	46	52%
Dunn	Family	2 to 3	\$170.00	\$175.00	\$250.00	\$207.39	6	13	16	46	35%
Dunn	Family	4 to 5	\$170.00	\$175.00	\$250.00	\$198.70	6	13	16	46	35%
Dunn	Family	6+	\$170.00	\$175.00	\$200.00	\$182.39	6	13	16	46	35%
Dunn	Group	0 to 1	\$275.00	\$289.00	\$289.00	\$283.34	3	11	71	187	38%
Dunn	Group	2 to 3	\$265.00	\$270.00	\$277.00	\$271.49	4	11	0	232	0%
Dunn	Group	4 to 5	\$250.00	\$250.00	\$272.00	\$246.64	3	11	116	216	54%

Dunn	Group	6+	\$214.00	\$214.00	\$230.00	\$220.64	2	11	0	171	0%
Eau Claire	Family	0 to 1	\$165.00	\$200.00	\$200.00	\$196.73	14	22	86	110	78%
Eau Claire	Family	2 to 3	\$150.00	\$175.00	\$200.00	\$186.55	14	22	94	110	85%
Eau Claire	Family	4 to 5	\$150.00	\$165.00	\$200.00	\$185.09	14	22	64	110	58%
Eau Claire	Family	6+	\$150.00	\$175.00	\$200.00	\$185.49	13	22	56	102	55%
Eau Claire	Group	0 to 1	\$300.00	\$320.00	\$330.00	\$316.60	19	55	851	1787	48%
Eau Claire	Group	2 to 3	\$285.00	\$305.00	\$320.00	\$297.11	23	55	858	2018	43%
Eau Claire	Group	4 to 5	\$220.00	\$265.00	\$290.00	\$230.64	27	55	1311	2260	58%
Eau Claire	Group	6+	\$220.00	\$250.00	\$265.00	\$233.07	25	55	957	2206	43%
Florence	Family	0 to 1	N/A	N/A	N/A	N/A	0	0	N/A	N/A	N/A
Florence	Family	2 to 3	N/A	N/A	N/A	N/A	0	0	N/A	N/A	N/A
Florence	Family	4 to 5	N/A	N/A	N/A	N/A	0	0	N/A	N/A	N/A
Florence	Family	6+	N/A	N/A	N/A	N/A	0	0	N/A	N/A	N/A
Florence	Group	0 to 1	N/A	N/A	N/A	N/A	0	0	N/A	N/A	N/A
Florence	Group	2 to 3	N/A	N/A	N/A	N/A	0	0	N/A	N/A	N/A
Florence	Group	4 to 5	N/A	N/A	N/A	N/A	0	0	N/A	N/A	N/A
Florence	Group	6+	N/A	N/A	N/A	N/A	0	0	N/A	N/A	N/A
Fond du Lac	Family	0 to 1	\$180.00	\$205.00	\$250.00	\$208.18	3	4	22	22	100%
Fond du Lac	Family	2 to 3	\$180.00	\$200.00	\$250.00	\$206.36	3	4	22	22	100%
Fond du Lac	Family	4 to 5	\$180.00	\$200.00	\$250.00	\$206.36	3	4	16	22	73%
Fond du Lac	Family	6+	\$175.00	\$175.00	\$180.00	\$177.50	2	4	16	16	100%
Fond du Lac	Group	0 to 1	\$250.00	\$280.00	\$293.00	\$269.36	13	31	1036	1036	100%
Fond du Lac	Group	2 to 3	\$230.00	\$250.00	\$283.00	\$254.89	14	31	936	1036	90%
Fond du Lac	Group	4 to 5	\$215.00	\$225.00	\$247.00	\$230.92	13	31	936	1036	90%
Fond du Lac	Group	6+	\$200.00	\$210.00	\$230.00	\$213.59	10	31	761	861	88%
Forest	Family	0 to 1	\$200.00	\$200.00	\$200.00	\$200.00	1	1	0	8	0%
Forest	Family	2 to 3	\$200.00	\$200.00	\$200.00	\$200.00	1	1	0	8	0%
Forest	Family	4 to 5	\$200.00	\$200.00	\$200.00	\$200.00	1	1	0	8	0%
Forest	Family	6+	\$200.00	\$200.00	\$200.00	\$200.00	1	1	0	8	0%
Forest	Group	0 to 1	N/A	N/A	N/A	N/A	0	4	N/A	N/A	N/A
Forest	Group	2 to 3	N/A	N/A	N/A	N/A	0	4	N/A	N/A	N/A
Forest	Group	4 to 5	N/A	N/A	N/A	N/A	0	4	N/A	N/A	N/A
Forest	Group	6+	N/A	N/A	N/A	N/A	0	4	N/A	N/A	N/A
Grant	Family	0 to 1	\$195.00	\$200.00	\$225.00	\$196.00	5	12	40	40	100%
Grant	Family	2 to 3	\$175.00	\$200.00	\$200.00	\$187.00	5	12	40	40	100%
Grant	Family	4 to 5	\$175.00	\$200.00	\$200.00	\$185.00	5	12	32	40	80%
Grant	Family	6+	\$125.00	\$190.00	\$200.00	\$178.75	4	12	32	32	100%

Grant	Group	0 to 1	\$185.00	\$190.00	\$242.00	\$210.95	4	19	213	213	100%
Grant	Group	2 to 3	\$185.00	\$190.00	\$220.00	\$202.77	4	19	213	213	100%
Grant	Group	4 to 5	\$185.00	\$190.00	\$220.00	\$200.89	4	19	213	213	100%
Grant	Group	6+	\$185.00	\$190.00	\$220.00	\$199.01	4	19	213	213	100%
Green	Family	0 to 1	\$165.00	\$210.00	\$225.00	\$205.00	7	12	40	56	71%
Green	Family	2 to 3	\$150.00	\$175.00	\$225.00	\$186.43	7	12	40	56	71%
Green	Family	4 to 5	\$150.00	\$175.00	\$225.00	\$186.43	7	12	40	56	71%
Green	Family	6+	\$140.00	\$160.00	\$225.00	\$176.67	6	12	32	48	67%
Green	Group	0 to 1	\$295.00	\$295.00	\$325.00	\$310.44	6	15	282	490	58%
Green	Group	2 to 3	\$255.00	\$270.00	\$300.00	\$281.12	8	15	362	570	64%
Green	Group	4 to 5	\$250.00	\$260.00	\$260.00	\$261.62	9	15	454	602	75%
Green	Group	6+	\$225.00	\$250.00	\$250.00	\$242.48	9	15	274	602	46%
Green Lake	Family	0 to 1	\$165.00	\$200.00	\$250.00	\$205.00	3	7	24	24	100%
Green Lake	Family	2 to 3	\$150.00	\$200.00	\$250.00	\$200.00	3	7	16	24	67%
Green Lake	Family	4 to 5	\$150.00	\$165.00	\$225.00	\$180.00	3	7	16	24	67%
Green Lake	Family	6+	\$145.00	\$150.00	\$225.00	\$173.33	3	7	16	24	67%
Green Lake	Group	0 to 1	\$310.00	\$310.00	\$310.00	\$310.00	1	4	50	50	100%
Green Lake	Group	2 to 3	\$293.00	\$293.00	\$293.00	\$293.00	1	4	0	50	0%
Green Lake	Group	4 to 5	\$282.00	\$282.00	\$282.00	\$282.00	1	4	0	50	0%
Green Lake	Group	6+	\$262.00	\$262.00	\$262.00	\$262.00	1	4	0	50	0%
Iowa	Family	0 to 1	\$150.00	\$175.00	\$210.00	\$178.33	3	8	24	24	100%
Iowa	Family	2 to 3	\$150.00	\$175.00	\$200.00	\$175.00	3	8	24	24	100%
Iowa	Family	4 to 5	\$150.00	\$175.00	\$200.00	\$175.00	3	8	24	24	100%
Iowa	Family	6+	\$150.00	\$175.00	\$200.00	\$175.00	3	8	24	24	100%
Iowa	Group	0 to 1	\$265.57	\$300.00	\$300.00	\$282.43	3	6	285	285	100%
Iowa	Group	2 to 3	\$265.57	\$275.00	\$275.00	\$263.24	3	6	285	285	100%
Iowa	Group	4 to 5	\$225.00	\$225.00	\$225.00	\$224.73	3	6	285	285	100%
Iowa	Group	6+	\$175.00	\$175.00	\$191.00	\$189.82	3	6	285	285	100%
Iron	Family	0 to 1	\$225.00	\$225.00	\$225.00	\$225.00	1	1	0	8	0%
Iron	Family	2 to 3	\$210.00	\$210.00	\$210.00	\$210.00	1	1	0	8	0%
Iron	Family	4 to 5	\$200.00	\$200.00	\$200.00	\$200.00	1	1	0	8	0%
Iron	Family	6+	\$200.00	\$200.00	\$200.00	\$200.00	1	1	0	8	0%
Iron	Group	0 to 1	N/A	N/A	N/A	N/A	0	1	N/A	N/A	N/A
Iron	Group	2 to 3	N/A	N/A	N/A	N/A	0	1	N/A	N/A	N/A
Iron	Group	4 to 5	N/A	N/A	N/A	N/A	0	1	N/A	N/A	N/A
Iron	Group	6+	N/A	N/A	N/A	N/A	0	1	N/A	N/A	N/A
Jackson	Family	0 to 1	\$190.00	\$190.00	\$200.00	\$195.00	2	3	16	16	100%

Jackson	Family	2 to 3	\$170.00	\$170.00	\$200.00	\$185.00	2	3	16	16	100%
Jackson	Family	4 to 5	\$170.00	\$170.00	\$200.00	\$185.00	2	3	16	16	100%
Jackson	Family	6+	\$100.00	\$100.00	\$100.00	\$100.00	1	3	8	8	100%
Jackson	Group	0 to 1	\$221.00	\$221.00	\$250.00	\$235.50	2	8	54	54	100%
Jackson	Group	2 to 3	\$196.00	\$196.00	\$220.00	\$208.00	2	8	54	54	100%
Jackson	Group	4 to 5	\$150.00	\$186.00	\$190.00	\$172.80	3	8	90	90	100%
Jackson	Group	6+	\$144.00	\$150.00	\$180.00	\$157.20	3	8	90	90	100%
Jefferson	Family	0 to 1	\$185.00	\$210.00	\$350.00	\$248.33	3	5	16	24	67%
Jefferson	Family	2 to 3	\$150.00	\$195.00	\$220.00	\$188.33	3	5	24	24	100%
Jefferson	Family	4 to 5	\$150.00	\$190.00	\$195.00	\$178.33	3	5	16	24	67%
Jefferson	Family	6+	\$150.00	\$150.00	\$190.00	\$170.00	2	5	16	16	100%
Jefferson	Group	0 to 1	\$265.00	\$300.00	\$320.00	\$309.58	10	32	323	813	40%
Jefferson	Group	2 to 3	\$227.85	\$279.00	\$295.00	\$276.79	12	32	338	918	37%
Jefferson	Group	4 to 5	\$210.00	\$227.85	\$250.00	\$226.42	14	32	558	1003	56%
Jefferson	Group	6+	\$175.00	\$195.00	\$215.00	\$194.02	11	32	564	843	67%
Juneau	Family	0 to 1	\$225.00	\$225.00	\$225.00	\$225.00	1	3	0	8	0%
Juneau	Family	2 to 3	\$200.00	\$200.00	\$200.00	\$200.00	1	3	0	8	0%
Juneau	Family	4 to 5	\$200.00	\$200.00	\$200.00	\$200.00	1	3	0	8	0%
Juneau	Family	6+	\$200.00	\$200.00	\$200.00	\$200.00	1	3	0	8	0%
Juneau	Group	0 to 1	\$195.00	\$210.00	\$270.00	\$232.89	3	8	154	154	100%
Juneau	Group	2 to 3	\$195.00	\$210.00	\$240.00	\$219.25	3	8	154	154	100%
Juneau	Group	4 to 5	\$174.00	\$185.00	\$250.00	\$211.76	3	8	84	154	55%
Juneau	Group	6+	\$174.00	\$185.00	\$250.00	\$211.76	3	8	84	154	55%
Kenosha	Family	0 to 1	\$205.00	\$210.00	\$240.00	\$222.25	10	22	72	80	90%
Kenosha	Family	2 to 3	\$180.00	\$195.00	\$228.00	\$209.18	10	22	56	80	70%
Kenosha	Family	4 to 5	\$175.00	\$190.00	\$225.00	\$202.75	10	22	48	80	60%
Kenosha	Family	6+	\$180.00	\$190.00	\$225.00	\$199.03	9	22	48	72	67%
Kenosha	Group	0 to 1	\$275.00	\$310.00	\$374.00	\$325.37	22	72	1190	1831	65%
Kenosha	Group	2 to 3	\$240.00	\$268.00	\$349.00	\$289.59	23	72	1117	1877	60%
Kenosha	Group	4 to 5	\$220.00	\$250.00	\$299.00	\$248.92	34	72	1065	2373	45%
Kenosha	Group	6+	\$190.00	\$230.00	\$252.98	\$230.95	27	72	843	2006	42%
Kewaunee	Family	0 to 1	\$150.00	\$150.00	\$200.00	\$166.67	3	6	24	24	100%
Kewaunee	Family	2 to 3	\$140.00	\$150.00	\$200.00	\$163.33	3	6	24	24	100%
Kewaunee	Family	4 to 5	\$140.00	\$150.00	\$200.00	\$163.33	3	6	24	24	100%
Kewaunee	Family	6+	\$115.00	\$150.00	\$200.00	\$155.00	3	6	24	24	100%
Kewaunee	Group	0 to 1	\$250.00	\$250.00	\$250.00	\$250.00	1	4	95	95	100%
Kewaunee	Group	2 to 3	\$240.00	\$240.00	\$240.00	\$240.00	1	4	95	95	100%

Kewaunee	Group	4 to 5	\$165.00	\$165.00	\$165.00	\$165.00	1	4	95	95	100%
Kewaunee	Group	6+	\$165.00	\$165.00	\$165.00	\$165.00	1	4	95	95	100%
La Crosse	Family	0 to 1	\$180.00	\$200.00	\$200.00	\$201.60	11	22	64	80	80%
La Crosse	Family	2 to 3	\$175.00	\$196.00	\$200.00	\$196.60	11	22	64	80	80%
La Crosse	Family	4 to 5	\$160.00	\$175.00	\$200.00	\$186.10	11	22	48	80	60%
La Crosse	Family	6+	\$150.00	\$175.00	\$200.00	\$184.38	9	22	32	64	50%
La Crosse	Group	0 to 1	\$270.00	\$295.00	\$310.00	\$286.32	19	51	755	1555	49%
La Crosse	Group	2 to 3	\$230.00	\$250.00	\$275.00	\$256.31	21	51	931	1651	56%
La Crosse	Group	4 to 5	\$205.84	\$237.00	\$260.00	\$223.76	25	51	1153	1801	64%
La Crosse	Group	6+	\$67.85	\$217.00	\$240.00	\$191.99	21	51	1098	1344	82%
Lafayette	Family	0 to 1	\$140.00	\$140.00	\$150.00	\$145.00	2	4	16	16	100%
Lafayette	Family	2 to 3	\$140.00	\$140.00	\$150.00	\$145.00	2	4	16	16	100%
Lafayette	Family	4 to 5	\$140.00	\$140.00	\$150.00	\$145.00	2	4	16	16	100%
Lafayette	Family	6+	\$140.00	\$140.00	\$150.00	\$145.00	2	4	16	16	100%
Lafayette	Group	0 to 1	N/A	N/A	N/A	N/A	0	2	N/A	N/A	N/A
Lafayette	Group	2 to 3	N/A	N/A	N/A	N/A	0	2	N/A	N/A	N/A
Lafayette	Group	4 to 5	N/A	N/A	N/A	N/A	0	2	N/A	N/A	N/A
Lafayette	Group	6+	N/A	N/A	N/A	N/A	0	2	N/A	N/A	N/A
Langlade	Family	0 to 1	\$150.00	\$150.00	\$150.00	\$150.00	1	5	8	8	100%
Langlade	Family	2 to 3	\$150.00	\$150.00	\$150.00	\$150.00	1	5	8	8	100%
Langlade	Family	4 to 5	\$150.00	\$150.00	\$150.00	\$150.00	1	5	8	8	100%
Langlade	Family	6+	\$150.00	\$150.00	\$150.00	\$150.00	1	5	8	8	100%
Langlade	Group	0 to 1	\$225.00	\$225.00	\$245.00	\$233.49	2	3	106	106	100%
Langlade	Group	2 to 3	\$200.00	\$200.00	\$225.00	\$210.61	2	3	106	106	100%
Langlade	Group	4 to 5	\$185.00	\$185.00	\$205.00	\$193.49	2	3	106	106	100%
Langlade	Group	6+	\$185.00	\$185.00	\$185.00	\$185.00	1	3	61	61	100%
Lincoln	Family	0 to 1	\$180.00	\$180.00	\$185.00	\$182.50	2	5	16	16	100%
Lincoln	Family	2 to 3	\$150.00	\$150.00	\$150.00	\$150.00	2	5	16	16	100%
Lincoln	Family	4 to 5	\$150.00	\$150.00	\$150.00	\$150.00	2	5	16	16	100%
Lincoln	Family	6+	\$150.00	\$150.00	\$150.00	\$150.00	2	5	16	16	100%
Lincoln	Group	0 to 1	\$260.00	\$260.00	\$315.00	\$277.86	2	7	104	154	68%
Lincoln	Group	2 to 3	\$230.00	\$230.00	\$265.00	\$253.38	3	7	104	205	51%
Lincoln	Group	4 to 5	\$220.00	\$220.00	\$266.90	\$233.54	4	7	154	224	69%
Lincoln	Group	6+	\$220.00	\$220.00	\$266.90	\$229.08	4	7	154	224	69%
Manitowoc	Family	0 to 1	\$145.00	\$145.00	\$155.00	\$150.00	2	5	16	16	100%
Manitowoc	Family	2 to 3	\$130.00	\$130.00	\$155.00	\$142.50	2	5	16	16	100%
Manitowoc	Family	4 to 5	\$130.00	\$130.00	\$155.00	\$142.50	2	5	16	16	100%

Manitowoc	Family	6+	\$130.00	\$130.00	\$155.00	\$142.50	2	5	16	16	100%
Manitowoc	Group	0 to 1	\$238.00	\$255.00	\$275.00	\$255.34	6	19	371	569	65%
Manitowoc	Group	2 to 3	\$225.00	\$231.00	\$235.00	\$235.30	7	19	501	601	83%
Manitowoc	Group	4 to 5	\$187.50	\$223.25	\$230.00	\$207.13	8	19	431	651	66%
Manitowoc	Group	6+	\$215.00	\$223.25	\$225.00	\$216.40	7	19	414	514	81%
Marathon	Family	0 to 1	\$200.00	\$220.00	\$250.00	\$219.17	18	29	88	144	61%
Marathon	Family	2 to 3	\$185.00	\$200.00	\$225.00	\$206.05	19	29	96	152	63%
Marathon	Family	4 to 5	\$175.00	\$200.00	\$200.00	\$195.11	19	29	72	152	47%
Marathon	Family	6+	\$167.00	\$185.00	\$200.00	\$187.18	17	29	80	136	59%
Marathon	Group	0 to 1	\$300.00	\$307.00	\$315.00	\$304.65	15	36	502	1449	35%
Marathon	Group	2 to 3	\$265.00	\$265.89	\$275.00	\$267.40	16	36	215	1474	15%
Marathon	Group	4 to 5	\$230.00	\$245.00	\$252.00	\$236.27	20	36	736	1635	45%
Marathon	Group	6+	\$208.00	\$220.00	\$235.00	\$216.04	15	36	310	1241	25%
Marinette	Family	0 to 1	\$250.00	\$250.00	\$251.32	\$250.66	2	6	0	16	0%
Marinette	Family	2 to 3	\$250.00	\$250.00	\$251.32	\$250.66	2	6	0	16	0%
Marinette	Family	4 to 5	\$200.00	\$200.00	\$200.00	\$200.00	1	6	0	8	0%
Marinette	Family	6+	\$200.00	\$200.00	\$200.00	\$200.00	1	6	0	8	0%
Marinette	Group	0 to 1	\$250.00	\$265.00	\$265.00	\$256.11	5	13	264	264	100%
Marinette	Group	2 to 3	\$225.00	\$240.00	\$240.00	\$235.28	6	13	90	283	32%
Marinette	Group	4 to 5	\$200.00	\$200.00	\$200.00	\$199.20	6	13	283	283	100%
Marinette	Group	6+	\$175.00	\$175.00	\$200.00	\$184.94	5	13	262	262	100%
Marquette	Family	0 to 1	\$225.00	\$225.00	\$225.00	\$225.00	1	1	0	8	0%
Marquette	Family	2 to 3	\$185.00	\$185.00	\$185.00	\$185.00	1	1	0	8	0%
Marquette	Family	4 to 5	\$185.00	\$185.00	\$185.00	\$185.00	1	1	0	8	0%
Marquette	Family	6+	\$185.00	\$185.00	\$185.00	\$185.00	1	1	0	8	0%
Marquette	Group	0 to 1	\$232.50	\$232.50	\$235.00	\$233.48	2	6	66	66	100%
Marquette	Group	2 to 3	\$220.00	\$220.00	\$232.50	\$226.02	3	6	83	83	100%
Marquette	Group	4 to 5	\$195.00	\$195.00	\$222.50	\$208.25	3	6	83	83	100%
Marquette	Group	6+	\$170.00	\$170.00	\$222.50	\$195.30	3	6	83	83	100%
Menominee	Family	0 to 1	N/A	N/A	N/A	N/A	0	0	N/A	N/A	N/A
Menominee	Family	2 to 3	N/A	N/A	N/A	N/A	0	0	N/A	N/A	N/A
Menominee	Family	4 to 5	N/A	N/A	N/A	N/A	0	0	N/A	N/A	N/A
Menominee	Family	6+	N/A	N/A	N/A	N/A	0	0	N/A	N/A	N/A
Menominee	Group	0 to 1	\$157.00	\$157.00	\$157.00	\$157.00	1	2	150	150	100%
Menominee	Group	2 to 3	\$132.00	\$132.00	\$132.00	\$132.00	1	2	150	150	100%
Menominee	Group	4 to 5	\$132.00	\$132.00	\$132.00	\$132.00	1	2	150	150	100%
Menominee	Group	6+	\$112.00	\$112.00	\$112.00	\$112.00	1	2	150	150	100%

Milwaukee	Family	0 to 1	\$275.00	\$305.00	\$365.00	\$332.28	141	792	512	1039	49%
Milwaukee	Family	2 to 3	\$255.00	\$285.00	\$340.00	\$304.41	142	792	528	1047	50%
Milwaukee	Family	4 to 5	\$245.00	\$275.00	\$310.00	\$283.16	142	792	511	1047	49%
Milwaukee	Family	6+	\$220.15	\$250.00	\$291.00	\$262.40	139	792	527	1023	52%
Milwaukee	Group	0 to 1	\$326.00	\$375.00	\$420.00	\$377.93	116	578	5229	8745	60%
Milwaukee	Group	2 to 3	\$300.98	\$330.00	\$374.00	\$337.48	129	578	5033	9403	54%
Milwaukee	Group	4 to 5	\$275.00	\$305.00	\$350.00	\$304.36	139	578	9481	9572	50%
Milwaukee	Group	6+	\$200.00	\$270.00	\$310.00	\$248.71	129	578	5027	9297	54%
Monroe	Family	0 to 1	\$155.00	\$175.00	\$200.00	\$182.27	11	16	88	88	100%
Monroe	Family	2 to 3	\$150.00	\$150.00	\$185.00	\$166.82	11	16	80	88	91%
Monroe	Family	4 to 5	\$150.00	\$150.00	\$185.00	\$166.82	11	16	80	88	91%
Monroe	Family	6+	\$150.00	\$150.00	\$165.00	\$163.50	10	16	72	80	90%
Monroe	Group	0 to 1	\$270.00	\$270.00	\$275.00	\$271.84	2	10	79	79	100%
Monroe	Group	2 to 3	\$210.00	\$240.00	\$250.00	\$266.77	4	10	129	164	79%
Monroe	Group	4 to 5	\$210.00	\$225.00	\$230.00	\$221.12	3	10	129	129	100%
Monroe	Group	6+	\$190.00	\$200.00	\$210.00	\$200.00	3	10	129	129	100%
Oconto	Family	0 to 1	\$160.00	\$165.00	\$185.00	\$190.00	4	8	32	32	100%
Oconto	Family	2 to 3	\$160.00	\$165.00	\$175.00	\$187.50	4	8	32	32	100%
Oconto	Family	4 to 5	\$155.00	\$165.00	\$175.00	\$180.00	4	8	32	32	100%
Oconto	Family	6+	\$150.00	\$165.00	\$175.00	\$178.75	4	8	32	32	100%
Oconto	Group	0 to 1	\$195.00	\$348.00	\$348.00	\$272.52	3	7	130	270	48%
Oconto	Group	2 to 3	\$167.00	\$175.20	\$302.00	\$230.32	4	7	170	310	55%
Oconto	Group	4 to 5	\$162.00	\$175.20	\$270.00	\$214.58	4	7	170	310	55%
Oconto	Group	6+	\$151.00	\$175.20	\$270.00	\$211.10	4	7	170	310	55%
Oneida	Family	0 to 1	\$200.00	\$200.00	\$200.00	\$200.00	2	3	0	8	0%
Oneida	Family	2 to 3	\$200.00	\$200.00	\$200.00	\$200.00	2	3	0	8	0%
Oneida	Family	4 to 5	\$200.00	\$200.00	\$200.00	\$200.00	2	3	0	8	0%
Oneida	Family	6+	\$200.00	\$200.00	\$200.00	\$200.00	1	3	0	8	0%
Oneida	Group	0 to 1	\$325.00	\$335.00	\$335.00	\$332.44	4	12	0	168	0%
Oneida	Group	2 to 3	\$300.00	\$325.00	\$514.65	\$380.92	5	12	83	259	32%
Oneida	Group	4 to 5	\$300.00	\$325.00	\$465.60	\$356.25	6	12	28	259	11%
Oneida	Group	6+	\$250.00	\$290.00	\$325.00	\$280.65	5	12	83	168	49%
Outagamie	Family	0 to 1	\$210.00	\$250.00	\$300.00	\$255.07	20	30	85	157	54%
Outagamie	Family	2 to 3	\$210.00	\$250.00	\$250.00	\$237.27	21	30	78	165	47%
Outagamie	Family	4 to 5	\$200.00	\$250.00	\$250.00	\$235.58	21	30	78	165	47%
Outagamie	Family	6+	\$200.00	\$225.00	\$250.00	\$225.01	21	30	86	165	52%
Outagamie	Group	0 to 1	\$309.00	\$325.00	\$335.00	\$319.44	23	65	866	2318	37%

Outagamie	Group	2 to 3	\$285.00	\$310.00	\$315.00	\$297.46	25	65	1125	2398	47%
Outagamie	Group	4 to 5	\$247.00	\$280.00	\$298.00	\$253.93	41	65	2718	3338	44%
Outagamie	Group	6+	\$250.00	\$275.00	\$295.00	\$269.61	33	65	768	2635	29%
Ozaukee	Family	0 to 1	\$260.00	\$260.00	\$260.00	\$260.00	2	7	16	16	100%
Ozaukee	Family	2 to 3	\$250.00	\$250.00	\$260.00	\$255.00	2	7	16	16	100%
Ozaukee	Family	4 to 5	\$250.00	\$250.00	\$260.00	\$255.00	2	7	16	16	100%
Ozaukee	Family	6+	N/A	N/A	N/A	N/A	0	7	N/A	N/A	N/A
Ozaukee	Group	0 to 1	\$290.00	\$355.00	\$410.00	\$357.19	17	46	960	1497	64%
Ozaukee	Group	2 to 3	\$285.00	\$325.00	\$370.00	\$329.63	17	46	890	1497	59%
Ozaukee	Group	4 to 5	\$270.00	\$280.00	\$349.00	\$298.54	19	46	996	1497	67%
Ozaukee	Group	6+	\$220.00	\$235.00	\$275.00	\$248.36	16	46	921	1227	75%
Pepin	Family	0 to 1	\$150.00	\$175.00	\$200.00	\$185.00	4	7	24	30	80%
Pepin	Family	2 to 3	\$145.00	\$160.00	\$175.00	\$173.00	4	7	24	30	80%
Pepin	Family	4 to 5	\$145.00	\$160.00	\$175.00	\$173.00	4	7	24	30	80%
Pepin	Family	6+	\$105.00	\$145.00	\$175.00	\$141.67	3	7	24	24	100%
Pepin	Group	0 to 1	N/A	N/A	N/A	N/A	0	1	N/A	N/A	N/A
Pepin	Group	2 to 3	N/A	N/A	N/A	N/A	0	1	N/A	N/A	N/A
Pepin	Group	4 to 5	N/A	N/A	N/A	N/A	0	1	N/A	N/A	N/A
Pepin	Group	6+	N/A	N/A	N/A	N/A	0	1	N/A	N/A	N/A
Pierce	Family	0 to 1	\$180.00	\$200.00	\$220.00	\$206.00	15	24	112	120	93%
Pierce	Family	2 to 3	\$180.00	\$185.00	\$220.00	\$196.00	15	24	104	120	87%
Pierce	Family	4 to 5	\$170.00	\$180.00	\$220.00	\$192.33	15	24	104	120	87%
Pierce	Family	6+	\$150.00	\$170.00	\$220.00	\$178.33	15	24	96	120	80%
Pierce	Group	0 to 1	\$305.00	\$305.00	\$305.00	\$305.00	2	9	273	273	100%
Pierce	Group	2 to 3	\$290.00	\$290.00	\$290.00	\$283.52	3	9	293	293	100%
Pierce	Group	4 to 5	\$265.00	\$275.00	\$275.00	\$246.37	3	9	358	358	100%
Pierce	Group	6+	\$205.00	\$275.00	\$275.00	\$231.28	3	9	175	358	49%
Polk	Family	0 to 1	\$137.00	\$150.00	\$212.50	\$176.58	6	12	40	48	83%
Polk	Family	2 to 3	\$137.00	\$150.00	\$212.50	\$172.42	6	12	32	48	67%
Polk	Family	4 to 5	\$137.00	\$145.00	\$212.50	\$167.42	6	12	32	48	67%
Polk	Family	6+	\$137.00	\$145.00	\$212.50	\$167.42	6	12	32	48	67%
Polk	Group	0 to 1	\$245.00	\$245.00	\$245.00	\$245.00	1	5	81	81	100%
Polk	Group	2 to 3	\$240.00	\$240.00	\$240.00	\$240.00	1	5	81	81	100%
Polk	Group	4 to 5	\$225.00	\$225.00	\$225.00	\$225.00	1	5	81	81	100%
Polk	Group	6+	\$220.00	\$220.00	\$220.00	\$220.00	1	5	0	81	0%
Portage	Family	0 to 1	\$195.00	\$200.00	\$215.00	\$199.22	9	21	48	72	67%
Portage	Family	2 to 3	\$180.00	\$190.00	\$205.00	\$192.00	9	21	56	72	78%

Portage	Family	4 to 5	\$175.00	\$190.00	\$205.00	\$189.78	9	21	56	72	78%
Portage	Family	6+	\$160.00	\$175.00	\$190.00	\$179.75	8	21	64	64	100%
Portage	Group	0 to 1	\$329.00	\$334.00	\$335.00	\$331.91	9	23	191	901	21%
Portage	Group	2 to 3	\$290.00	\$320.00	\$325.00	\$310.48	12	23	255	965	26%
Portage	Group	4 to 5	\$290.00	\$305.00	\$310.00	\$290.55	12	23	220	965	23%
Portage	Group	6+	\$250.00	\$285.00	\$285.00	\$267.78	9	23	311	764	41%
Price	Family	0 to 1	\$175.00	\$180.00	\$200.00	\$185.00	3	5	24	24	100%
Price	Family	2 to 3	\$175.00	\$175.00	\$180.00	\$176.67	3	5	24	24	100%
Price	Family	4 to 5	\$160.00	\$175.00	\$175.00	\$170.00	3	5	24	24	100%
Price	Family	6+	\$160.00	\$175.00	\$175.00	\$170.00	3	5	24	24	100%
Price	Group	0 to 1	\$150.00	\$150.00	\$150.00	\$150.00	1	3	20	20	100%
Price	Group	2 to 3	\$150.00	\$150.00	\$150.00	\$150.00	1	3	20	20	100%
Price	Group	4 to 5	\$150.00	\$150.00	\$150.00	\$150.00	1	3	20	20	100%
Price	Group	6+	\$130.00	\$130.00	\$130.00	\$130.00	1	3	20	20	100%
Racine	Family	0 to 1	\$205.00	\$210.00	\$300.00	\$249.17	6	10	32	48	67%
Racine	Family	2 to 3	\$205.00	\$210.00	\$275.00	\$236.67	6	10	32	48	67%
Racine	Family	4 to 5	\$205.00	\$210.00	\$275.00	\$232.50	6	10	8	48	17%
Racine	Family	6+	\$200.00	\$205.00	\$225.00	\$220.00	4	10	8	32	25%
Racine	Group	0 to 1	\$295.00	\$320.00	\$325.00	\$312.56	24	69	1804	2135	84%
Racine	Group	2 to 3	\$250.00	\$275.00	\$290.00	\$268.52	33	69	1508	2644	57%
Racine	Group	4 to 5	\$200.00	\$245.00	\$260.00	\$232.69	36	69	965	2759	35%
Racine	Group	6+	\$180.00	\$190.00	\$230.00	\$211.31	31	69	1718	2597	66%
Richland	Family	0 to 1	\$135.00	\$135.00	\$185.00	\$160.00	2	2	16	16	100%
Richland	Family	2 to 3	\$125.00	\$125.00	\$185.00	\$155.00	2	2	16	16	100%
Richland	Family	4 to 5	\$125.00	\$125.00	\$185.00	\$155.00	2	2	16	16	100%
Richland	Family	6+	\$125.00	\$125.00	\$185.00	\$155.00	2	2	8	16	50%
Richland	Group	0 to 1	\$195.00	\$195.00	\$275.00	\$222.83	2	4	75	115	65%
Richland	Group	2 to 3	\$195.00	\$195.00	\$225.00	\$205.43	2	4	115	115	100%
Richland	Group	4 to 5	\$185.00	\$185.00	\$225.00	\$198.91	2	4	115	115	100%
Richland	Group	6+	\$185.00	\$185.00	\$225.00	\$198.91	2	4	115	115	100%
Rock	Family	0 to 1	\$195.00	\$200.00	\$225.00	\$206.11	5	17	36	36	100%
Rock	Family	2 to 3	\$195.00	\$200.00	\$200.00	\$196.39	5	17	36	36	100%
Rock	Family	4 to 5	\$170.00	\$175.00	\$200.00	\$180.83	5	17	30	36	83%
Rock	Family	6+	\$100.00	\$170.00	\$175.00	\$148.33	3	17	24	24	100%
Rock	Group	0 to 1	\$300.00	\$320.00	\$350.00	\$323.21	17	70	753	1088	69%
Rock	Group	2 to 3	\$255.00	\$280.00	\$300.00	\$285.67	19	70	702	1209	58%
Rock	Group	4 to 5	\$240.00	\$250.00	\$280.00	\$265.06	20	70	202	1239	16%

Rock	Group	6+	\$215.00	\$240.00	\$280.00	\$248.86	18	70	392	1167	34%
Rusk	Family	0 to 1	N/A	N/A	N/A	N/A	0	0	N/A	N/A	N/A
Rusk	Family	2 to 3	N/A	N/A	N/A	N/A	0	0	N/A	N/A	N/A
Rusk	Family	4 to 5	N/A	N/A	N/A	N/A	0	0	N/A	N/A	N/A
Rusk	Family	6+	N/A	N/A	N/A	N/A	0	0	N/A	N/A	N/A
Rusk	Group	0 to 1	\$195.00	\$195.00	\$200.00	\$197.17	2	4	115	115	100%
Rusk	Group	2 to 3	\$195.00	\$195.00	\$200.00	\$197.17	2	4	115	115	100%
Rusk	Group	4 to 5	\$150.00	\$180.00	\$180.00	\$166.96	2	4	115	115	100%
Rusk	Group	6+	\$150.00	\$180.00	\$180.00	\$166.96	2	4	115	115	100%
Sauk	Family	0 to 1	\$175.00	\$175.00	\$185.00	\$186.00	5	19	32	40	80%
Sauk	Family	2 to 3	\$170.00	\$175.00	\$185.00	\$178.00	5	19	40	40	100%
Sauk	Family	4 to 5	\$160.00	\$175.00	\$185.00	\$180.00	4	19	24	32	75%
Sauk	Family	6+	\$150.00	\$150.00	\$200.00	\$175.00	2	19	8	16	50%
Sauk	Group	0 to 1	\$225.00	\$270.00	\$300.00	\$265.49	8	17	350	480	73%
Sauk	Group	2 to 3	\$225.00	\$250.00	\$290.00	\$250.67	8	17	287	480	60%
Sauk	Group	4 to 5	\$215.00	\$235.00	\$275.00	\$232.53	9	17	237	480	49%
Sauk	Group	6+	\$170.00	\$200.00	\$275.00	\$211.81	8	17	200	417	48%
Sawyer	Family	0 to 1	\$190.00	\$190.00	\$190.00	\$190.00	1	3	8	8	100%
Sawyer	Family	2 to 3	\$180.00	\$180.00	\$180.00	\$180.00	1	3	8	8	100%
Sawyer	Family	4 to 5	\$180.00	\$180.00	\$180.00	\$180.00	1	3	8	8	100%
Sawyer	Family	6+	\$180.00	\$180.00	\$180.00	\$180.00	1	3	8	8	100%
Sawyer	Group	0 to 1	\$215.00	\$215.00	\$225.00	\$218.62	2	5	0	116	0%
Sawyer	Group	2 to 3	\$195.00	\$195.00	\$205.00	\$198.62	2	5	0	116	0%
Sawyer	Group	4 to 5	\$195.00	\$195.00	\$195.00	\$195.00	2	5	0	116	0%
Sawyer	Group	6+	\$195.00	\$195.00	\$195.00	\$195.00	1	5	0	74	0%
Shawano	Family	0 to 1	N/A	N/A	N/A	N/A	0	3	N/A	N/A	N/A
Shawano	Family	2 to 3	N/A	N/A	N/A	N/A	0	3	N/A	N/A	N/A
Shawano	Family	4 to 5	N/A	N/A	N/A	N/A	0	3	N/A	N/A	N/A
Shawano	Family	6+	N/A	N/A	N/A	N/A	0	3	N/A	N/A	N/A
Shawano	Group	0 to 1	\$250.00	\$250.00	\$300.00	\$270.27	2	7	110	185	59%
Shawano	Group	2 to 3	\$235.00	\$235.00	\$270.00	\$249.19	2	7	110	185	59%
Shawano	Group	4 to 5	\$230.00	\$230.00	\$260.00	\$242.16	2	7	110	185	59%
Shawano	Group	6+	\$230.00	\$230.00	\$260.00	\$242.16	2	7	110	185	59%
Sheboygan	Family	0 to 1	\$190.00	\$265.00	\$300.00	\$262.74	8	15	54	62	87%
Sheboygan	Family	2 to 3	\$190.00	\$235.00	\$280.00	\$240.19	7	15	54	54	100%
Sheboygan	Family	4 to 5	\$190.00	\$230.00	\$265.00	\$232.90	8	15	62	62	100%
Sheboygan	Family	6+	\$190.00	\$230.00	\$265.00	\$232.90	8	15	62	62	100%

Sheboygan	Group	0 to 1	\$320.00	\$320.00	\$328.00	\$323.66	6	36	457	457	100%
Sheboygan	Group	2 to 3	\$242.00	\$294.00	\$294.00	\$278.64	9	36	677	677	100%
Sheboygan	Group	4 to 5	\$222.00	\$233.00	\$294.00	\$242.40	9	36	667	667	100%
Sheboygan	Group	6+	\$80.00	\$201.00	\$320.00	\$184.20	5	36	357	357	100%
St Croix	Family	0 to 1	\$175.00	\$180.00	\$325.00	\$231.45	8	15	46	62	74%
St Croix	Family	2 to 3	\$155.00	\$180.00	\$325.00	\$219.19	8	15	46	62	74%
St Croix	Family	4 to 5	\$155.00	\$180.00	\$325.00	\$216.61	8	15	46	62	74%
St Croix	Family	6+	\$155.00	\$180.00	\$230.00	\$201.94	8	15	46	62	74%
St Croix	Group	0 to 1	\$313.00	\$319.00	\$380.00	\$331.88	13	34	905	1104	82%
St Croix	Group	2 to 3	\$295.00	\$309.00	\$310.00	\$304.77	17	34	949	1258	75%
St Croix	Group	4 to 5	\$242.00	\$275.00	\$295.00	\$271.60	19	34	1037	1292	80%
St Croix	Group	6+	\$195.00	\$235.00	\$275.00	\$235.95	14	34	784	784	100%
Taylor	Family	0 to 1	\$150.00	\$175.00	\$200.00	\$175.00	3	6	24	24	100%
Taylor	Family	2 to 3	\$150.00	\$175.00	\$190.00	\$171.67	3	6	24	24	100%
Taylor	Family	4 to 5	\$150.00	\$170.00	\$175.00	\$165.00	3	6	24	24	100%
Taylor	Family	6+	\$150.00	\$170.00	\$175.00	\$165.00	3	6	24	24	100%
Taylor	Group	0 to 1	\$240.00	\$280.00	\$280.00	\$266.67	2	5	150	150	100%
Taylor	Group	2 to 3	\$240.00	\$260.00	\$260.00	\$253.33	2	5	150	150	100%
Taylor	Group	4 to 5	\$200.00	\$223.00	\$223.00	\$202.78	3	5	180	180	100%
Taylor	Group	6+	\$170.00	\$170.00	\$200.00	\$180.00	2	5	150	150	100%
Trempealeau	Family	0 to 1	\$150.00	\$185.00	\$190.00	\$177.00	6	9	40	40	100%
Trempealeau	Family	2 to 3	\$150.00	\$170.00	\$185.00	\$167.00	6	9	40	40	100%
Trempealeau	Family	4 to 5	\$150.00	\$170.00	\$185.00	\$167.00	6	9	40	40	100%
Trempealeau	Family	6+	\$140.00	\$150.00	\$185.00	\$166.25	5	9	32	32	100%
Trempealeau	Group	0 to 1	\$235.00	\$280.00	\$280.00	\$261.05	2	8	76	76	100%
Trempealeau	Group	2 to 3	\$235.00	\$270.00	\$270.00	\$255.26	2	8	76	76	100%
Trempealeau	Group	4 to 5	\$250.00	\$250.00	\$250.00	\$250.00	1	8	44	44	100%
Trempealeau	Group	6+	\$120.00	\$120.00	\$120.00	\$120.00	1	8	44	44	100%
Vernon	Family	0 to 1	\$128.00	\$160.00	\$170.00	\$152.67	3	6	24	24	100%
Vernon	Family	2 to 3	\$115.00	\$140.00	\$170.00	\$141.67	3	6	24	24	100%
Vernon	Family	4 to 5	\$113.00	\$140.00	\$170.00	\$141.00	3	6	24	24	100%
Vernon	Family	6+	\$140.00	\$140.00	\$170.00	\$155.00	2	6	16	16	100%
Vernon	Group	0 to 1	\$220.00	\$235.00	\$255.00	\$264.53	5	6	247	296	83%
Vernon	Group	2 to 3	\$205.00	\$215.00	\$230.00	\$245.46	5	6	247	296	83%
Vernon	Group	4 to 5	\$185.00	\$215.00	\$215.00	\$219.38	5	6	247	296	83%
Vernon	Group	6+	\$215.00	\$215.00	\$273.22	\$226.32	4	6	139	188	74%
Vilas	Family	0 to 1	N/A	N/A	N/A	N/A	0	0	N/A	N/A	N/A

Vilas	Family	2 to 3	N/A	N/A	N/A	N/A	0	0	N/A	N/A	N/A
Vilas	Family	4 to 5	N/A	N/A	N/A	N/A	0	0	N/A	N/A	N/A
Vilas	Family	6+	N/A	N/A	N/A	N/A	0	0	N/A	N/A	N/A
Vilas	Group	0 to 1	\$325.00	\$325.00	\$350.00	\$324.53	4	8	96	172	56%
Vilas	Group	2 to 3	\$325.00	\$325.00	\$330.00	\$311.51	4	8	36	172	21%
Vilas	Group	4 to 5	\$265.00	\$265.00	\$290.00	\$264.30	4	8	36	172	21%
Vilas	Group	6+	\$260.00	\$260.00	\$290.00	\$257.91	4	8	36	172	21%
Walworth	Family	0 to 1	\$220.00	\$225.00	\$225.00	\$223.75	4	8	32	32	100%
Walworth	Family	2 to 3	\$200.00	\$220.00	\$225.00	\$217.50	4	8	8	32	25%
Walworth	Family	4 to 5	\$200.00	\$220.00	\$225.00	\$217.50	4	8	8	32	25%
Walworth	Family	6+	\$200.00	\$220.00	\$225.00	\$217.50	4	8	8	32	25%
Walworth	Group	0 to 1	\$262.50	\$275.00	\$323.00	\$294.95	8	27	306	601	51%
Walworth	Group	2 to 3	\$242.50	\$276.00	\$295.00	\$264.04	9	27	401	646	62%
Walworth	Group	4 to 5	\$227.50	\$230.00	\$273.00	\$247.20	9	27	476	646	74%
Walworth	Group	6+	\$197.50	\$212.50	\$225.00	\$224.83	8	27	431	551	78%
Washburn	Family	0 to 1	\$130.00	\$175.00	\$200.00	\$168.33	3	7	16	24	67%
Washburn	Family	2 to 3	\$130.00	\$175.00	\$175.00	\$160.00	3	7	8	24	33%
Washburn	Family	4 to 5	\$120.00	\$175.00	\$175.00	\$156.67	3	7	8	24	33%
Washburn	Family	6+	\$120.00	\$175.00	\$175.00	\$156.67	3	7	8	24	33%
Washburn	Group	0 to 1	\$205.00	\$205.00	\$205.00	\$205.00	1	5	65	65	100%
Washburn	Group	2 to 3	\$195.00	\$195.00	\$195.00	\$195.00	1	5	65	65	100%
Washburn	Group	4 to 5	\$140.00	\$155.00	\$155.00	\$148.48	2	5	115	115	100%
Washburn	Group	6+	\$140.00	\$155.00	\$155.00	\$148.48	2	5	115	115	100%
Washington	Family	0 to 1	\$230.00	\$260.00	\$300.00	\$262.86	7	18	40	56	71%
Washington	Family	2 to 3	\$225.00	\$245.00	\$300.00	\$248.57	7	18	40	56	71%
Washington	Family	4 to 5	\$225.00	\$245.00	\$300.00	\$248.57	7	18	40	56	71%
Washington	Family	6+	\$200.00	\$230.00	\$300.00	\$241.43	7	18	16	56	29%
Washington	Group	0 to 1	\$312.00	\$340.00	\$420.00	\$354.65	13	44	444	1050	42%
Washington	Group	2 to 3	\$280.00	\$290.00	\$341.20	\$319.36	17	44	754	1323	57%
Washington	Group	4 to 5	\$245.00	\$268.00	\$314.90	\$278.74	20	44	660	1419	47%
Washington	Group	6+	\$210.00	\$240.00	\$279.00	\$251.28	19	44	742	1382	54%
Waukesha	Family	0 to 1	\$275.00	\$310.00	\$327.00	\$307.83	14	23	38	108	35%
Waukesha	Family	2 to 3	\$225.00	\$275.00	\$320.00	\$284.87	14	23	46	108	43%
Waukesha	Family	4 to 5	\$225.00	\$250.00	\$315.00	\$276.35	14	23	54	108	50%
Waukesha	Family	6+	\$200.00	\$240.00	\$300.00	\$259.57	12	23	56	94	60%
Waukesha	Group	0 to 1	\$334.00	\$383.00	\$428.92	\$374.94	67	175	3398	6858	50%
Waukesha	Group	2 to 3	\$300.00	\$330.00	\$395.00	\$335.57	74	175	3724	7342	51%

Waukesha	Group	4 to 5	\$243.00	\$300.00	\$339.00	\$289.80	90	175	4250	8084	53%
Waukesha	Group	6+	\$225.00	\$269.00	\$310.00	\$263.29	76	175	2992	7067	42%
Waupaca	Family	0 to 1	\$160.00	\$175.00	\$200.00	\$177.14	7	8	48	56	86%
Waupaca	Family	2 to 3	\$150.00	\$160.00	\$190.00	\$167.57	7	8	48	56	86%
Waupaca	Family	4 to 5	\$150.00	\$160.00	\$190.00	\$164.00	7	8	48	56	86%
Waupaca	Family	6+	\$148.00	\$150.00	\$190.00	\$162.17	6	8	40	48	83%
Waupaca	Group	0 to 1	\$215.00	\$270.00	\$331.25	\$274.99	6	16	184	360	51%
Waupaca	Group	2 to 3	\$200.00	\$240.00	\$303.75	\$249.78	7	16	134	390	34%
Waupaca	Group	4 to 5	\$180.00	\$235.00	\$283.75	\$226.52	7	16	184	390	47%
Waupaca	Group	6+	\$180.00	\$200.00	\$283.75	\$214.16	7	16	258	390	66%
Waushara	Family	0 to 1	\$180.00	\$200.00	\$205.80	\$208.95	4	9	32	32	100%
Waushara	Family	2 to 3	\$145.00	\$160.00	\$200.00	\$177.70	4	9	32	32	100%
Waushara	Family	4 to 5	\$140.00	\$160.00	\$191.50	\$172.88	4	9	32	32	100%
Waushara	Family	6+	\$137.50	\$160.00	\$191.50	\$172.25	4	9	32	32	100%
Waushara	Group	0 to 1	\$265.00	\$265.00	\$265.00	\$265.00	1	5	65	65	100%
Waushara	Group	2 to 3	\$255.00	\$255.00	\$255.00	\$255.00	1	5	65	65	100%
Waushara	Group	4 to 5	\$235.00	\$235.00	\$235.00	\$235.00	1	5	0	65	0%
Waushara	Group	6+	\$200.00	\$200.00	\$200.00	\$200.00	1	5	65	65	100%
Winnebago	Family	0 to 1	\$210.00	\$250.00	\$265.00	\$242.24	17	24	96	134	72%
Winnebago	Family	2 to 3	\$200.00	\$210.00	\$250.00	\$220.75	17	24	80	134	60%
Winnebago	Family	4 to 5	\$200.00	\$200.00	\$250.00	\$217.31	17	24	80	134	60%
Winnebago	Family	6+	\$195.00	\$200.00	\$210.00	\$200.42	15	24	86	118	73%
Winnebago	Group	0 to 1	\$300.00	\$341.00	\$363.00	\$332.32	20	54	842	1789	47%
Winnebago	Group	2 to 3	\$285.00	\$303.00	\$350.00	\$307.29	21	54	854	1801	47%
Winnebago	Group	4 to 5	\$265.00	\$276.00	\$300.00	\$280.38	21	54	628	1801	35%
Winnebago	Group	6+	\$225.00	\$260.00	\$300.00	\$246.12	17	54	786	1595	49%
Wood	Family	0 to 1	\$150.00	\$185.00	\$215.00	\$189.13	6	9	32	46	70%
Wood	Family	2 to 3	\$150.00	\$160.00	\$200.00	\$176.96	6	9	40	46	87%
Wood	Family	4 to 5	\$150.00	\$160.00	\$200.00	\$175.00	6	9	24	46	52%
Wood	Family	6+	\$150.00	\$160.00	\$200.00	\$175.00	6	9	40	46	87%
Wood	Group	0 to 1	\$253.00	\$260.00	\$260.00	\$254.27	12	27	200	824	24%
Wood	Group	2 to 3	\$235.00	\$250.00	\$250.00	\$244.04	13	27	699	896	78%
Wood	Group	4 to 5	\$220.00	\$230.00	\$250.00	\$227.80	14	27	512	859	60%
Wood	Group	6+	\$220.00	\$230.00	\$250.00	\$229.52	11	27	426	764	56%
Total for Wisconsin	N/A	N/A	N/A	N/A	N/A	N/A	1,578	3,940	47,538	79,185	60%

Results from Tribes in Wisconsin are too few to analyze as a geography, so they are mapped to neighboring counties.

Tribe	Mapped County
Bad River Band of Lake Superior Chippewa	Ashland
Forest County Potawatomi Community	Forest
Ho-Chunk Nation	Jackson or Wood
Lac Courte Oreilles Band of Lake Superior Chippewa	Sawyer
Stockbridge-Munsee Band of Mohican Indians	Shawano
Lac Du Flambeau Band of Lake Superior Chippewa	Vilas
Menominee Indian Tribe of Wisconsin	Menominee
Oneida Nation	Brown