

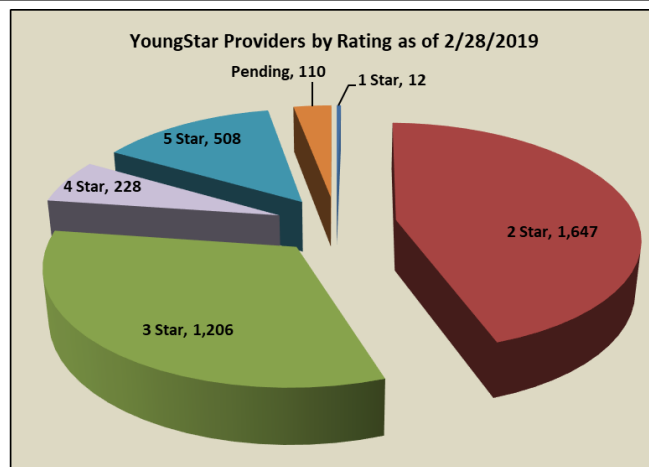
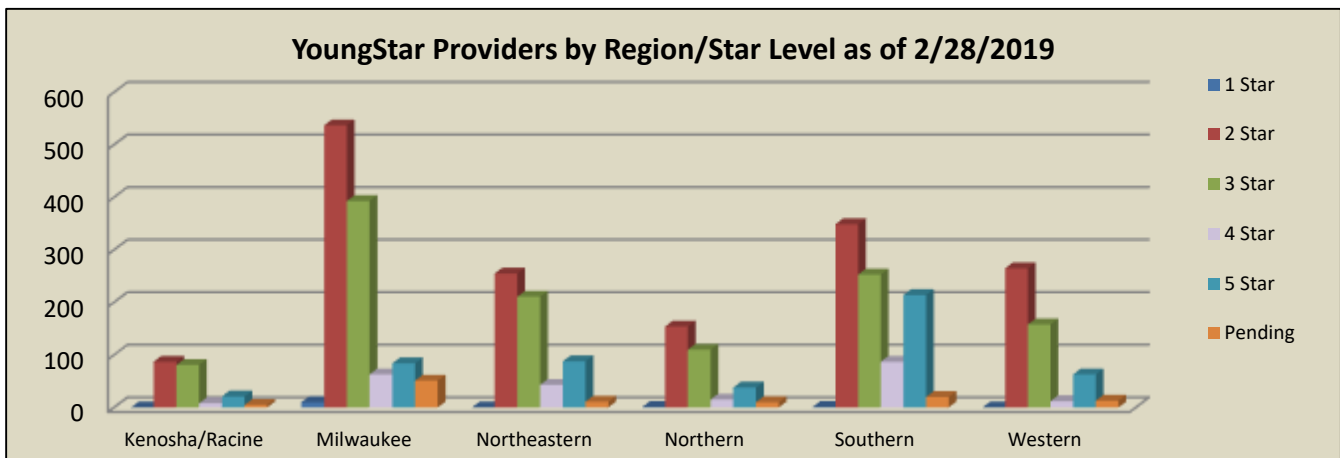
## Narrative of Monthly Report February 2019

For the month of February the following are notable YoungStar statistics.

★ **Participation and Rating Composition:**

We currently have 3,711 programs participating in YoungStar. This is a decrease of five programs as compared to January. The chart and graph below shows the rating composition by Region for the current month.

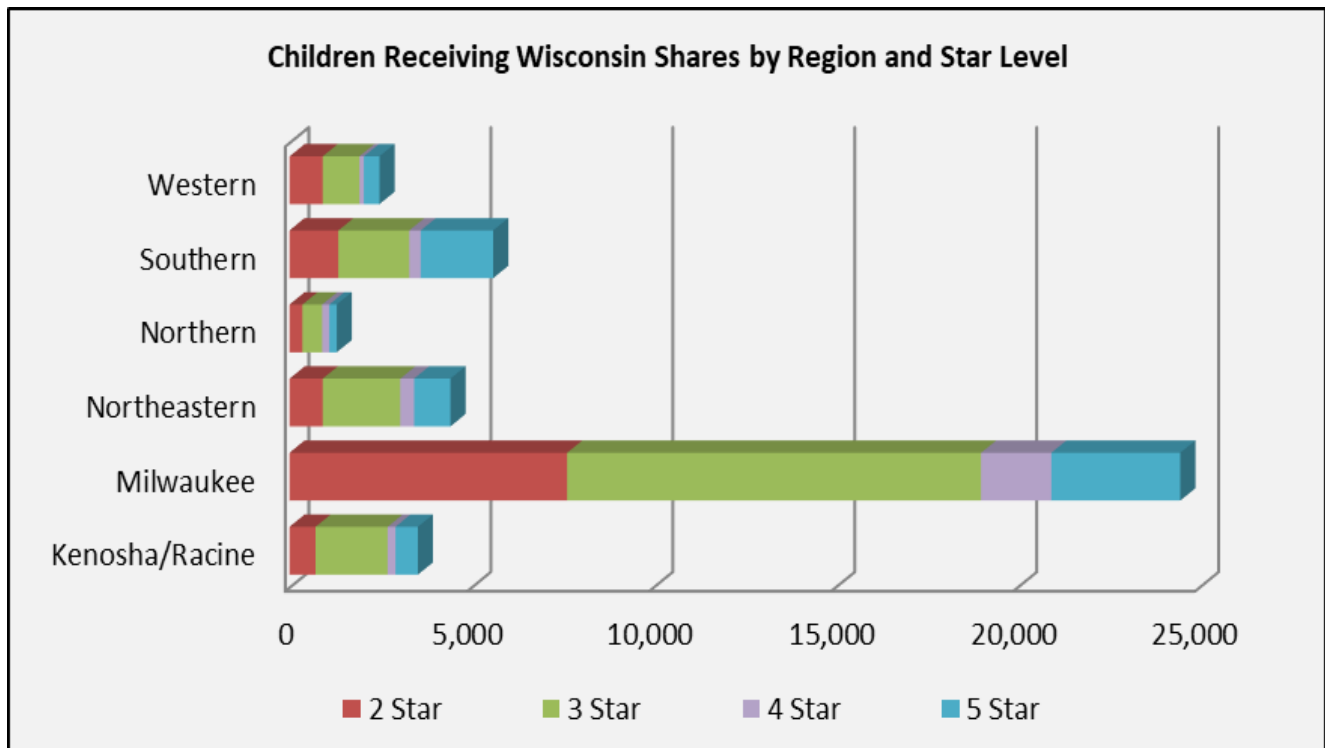
	1 Star	2 Star	3 Star	4 Star	5 Star	Pending	TOTAL
<b>Kenosha/Racine</b>	0	87	81	8	21	5	<b>202</b>
<b>Milwaukee</b>	10	537	393	63	84	51	<b>1,138</b>
<b>Northeastern</b>	0	255	211	43	88	11	<b>608</b>
<b>Northern</b>	1	154	110	15	38	10	<b>328</b>
<b>Southern</b>	1	349	253	87	214	20	<b>924</b>
<b>Western</b>	0	265	158	12	63	13	<b>511</b>
<b>Total</b>	<b>12</b>	<b>1,647</b>	<b>1,206</b>	<b>228</b>	<b>508</b>	<b>110</b>	<b>3,711</b>



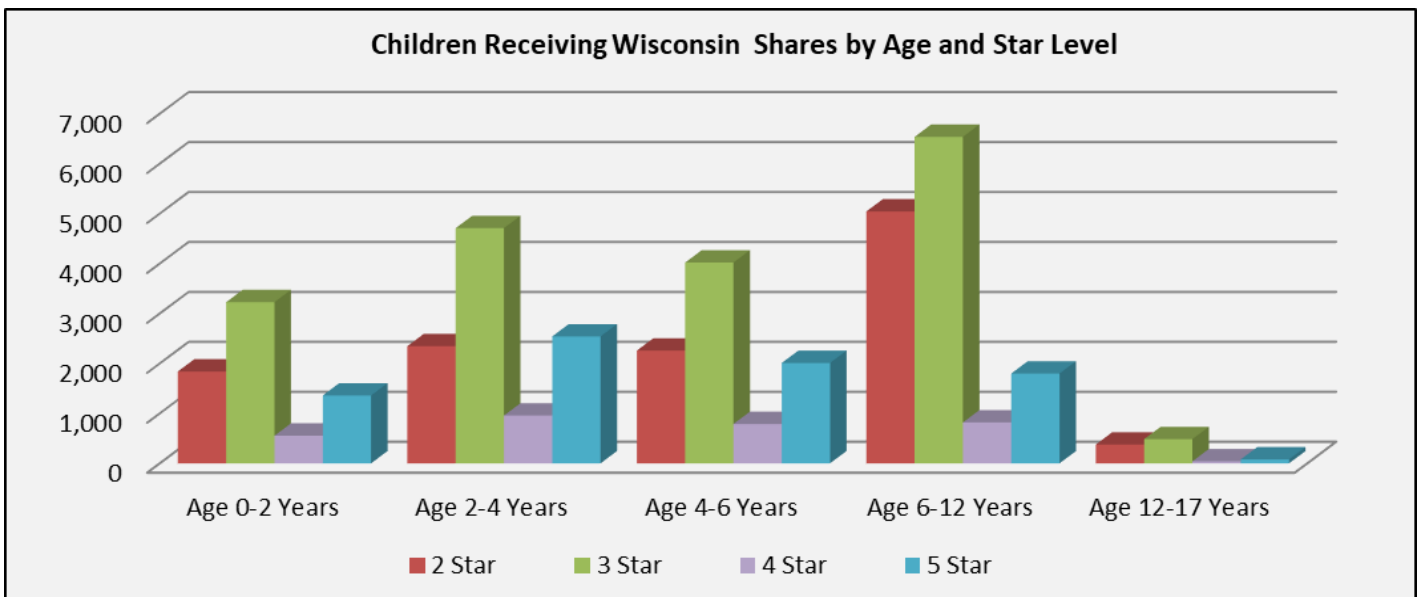
★ **Rating and Wisconsin Shares Data**

In February, the total number of programs currently rated was 3,601. There were an additional 110 programs with pending ratings. There were 2,778 programs with open Wisconsin Shares authorizations when the data was run for this report. There were 41,792 children receiving Wisconsin Shares as shown by region, age, and star level.

	2 Star	3 Star	4 Star	5 Star	Total
<b>Kenosha/Racine</b>	714	1,980	218	615	<b>3,527</b>
<b>Milwaukee</b>	7,629	11,373	1,929	3,544	<b>24,475</b>
<b>Northeastern</b>	914	2,129	379	1,000	<b>4,422</b>
<b>Northern</b>	353	543	197	204	<b>1,297</b>
<b>Southern</b>	1,342	1,949	312	1,994	<b>5,597</b>
<b>Western</b>	911	1,007	126	430	<b>2,474</b>
<b>Total</b>	<b>11,863</b>	<b>18,981</b>	<b>3,161</b>	<b>7,787</b>	<b>41,792</b>

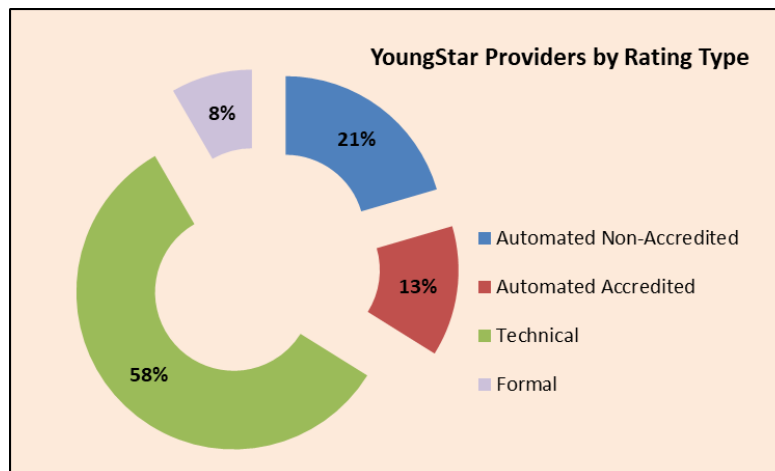


	2 Star	3 Star	4 Star	5 Star	Total
Age 0-2 Years	1,839	3,228	555	1,359	6,981
Age 2-4 Years	2,347	4,710	957	2,541	10,555
Age 4-6 Years	2,257	4,021	788	2,010	9,076
Age 6-12 Years	5,043	6,537	819	1,798	14,197
Age 12-17 Years	377	485	42	79	983
<b>Total</b>	<b>11,863</b>	<b>18,981</b>	<b>3,161</b>	<b>7,787</b>	<b>41,792</b>



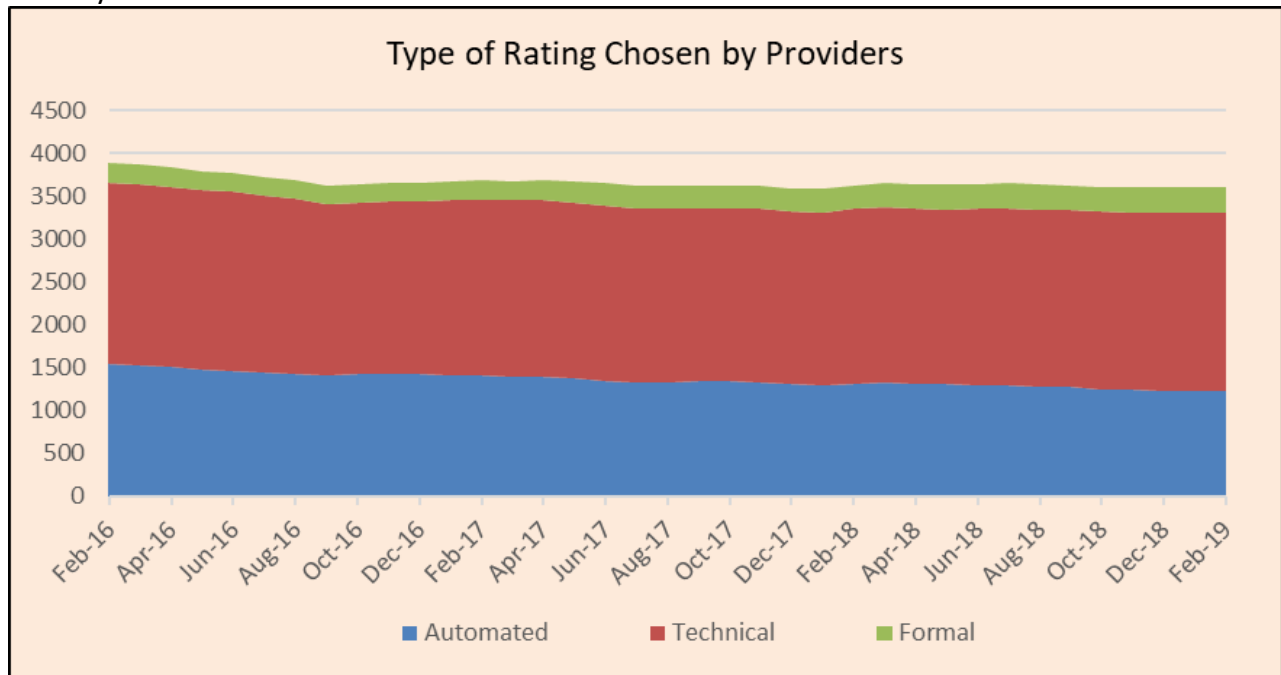
**Rating History and Composition:**

The composition of currently rated programs is shown below for February.

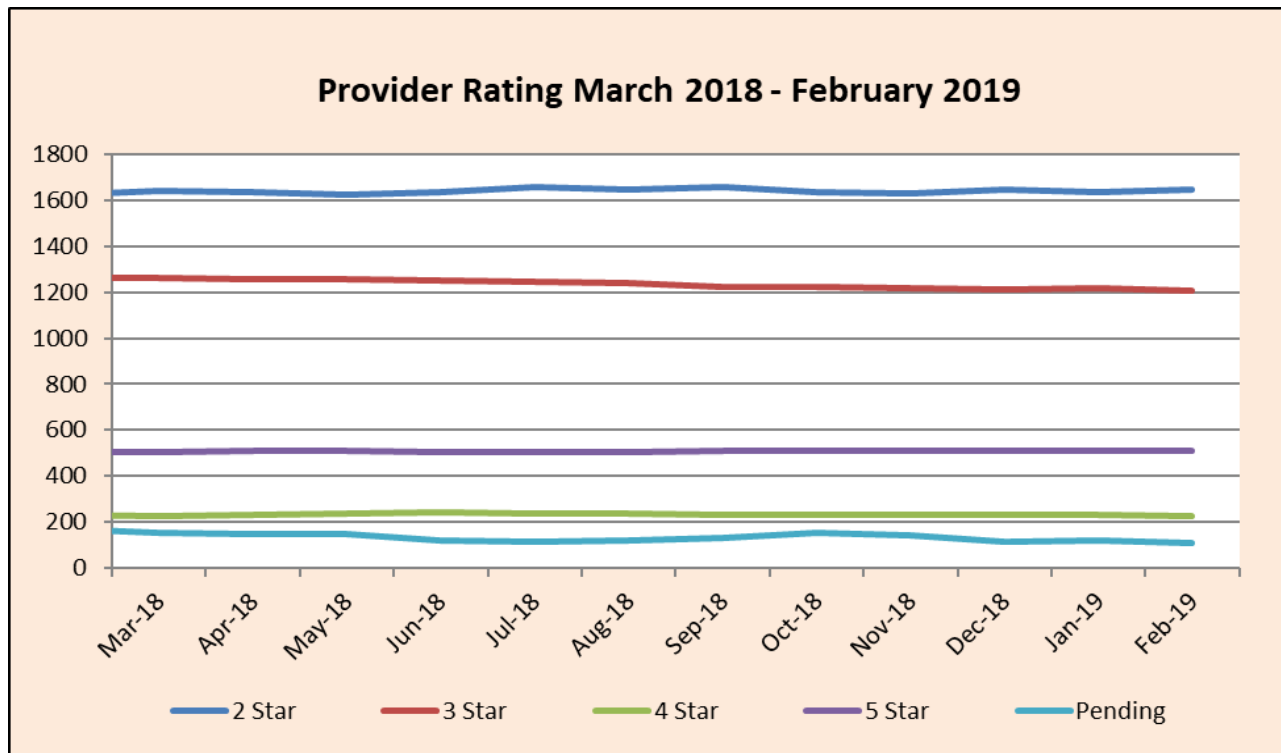


Data as of 2/28/2019

The graph below shows the movement in rating type chosen by providers over the past three years.

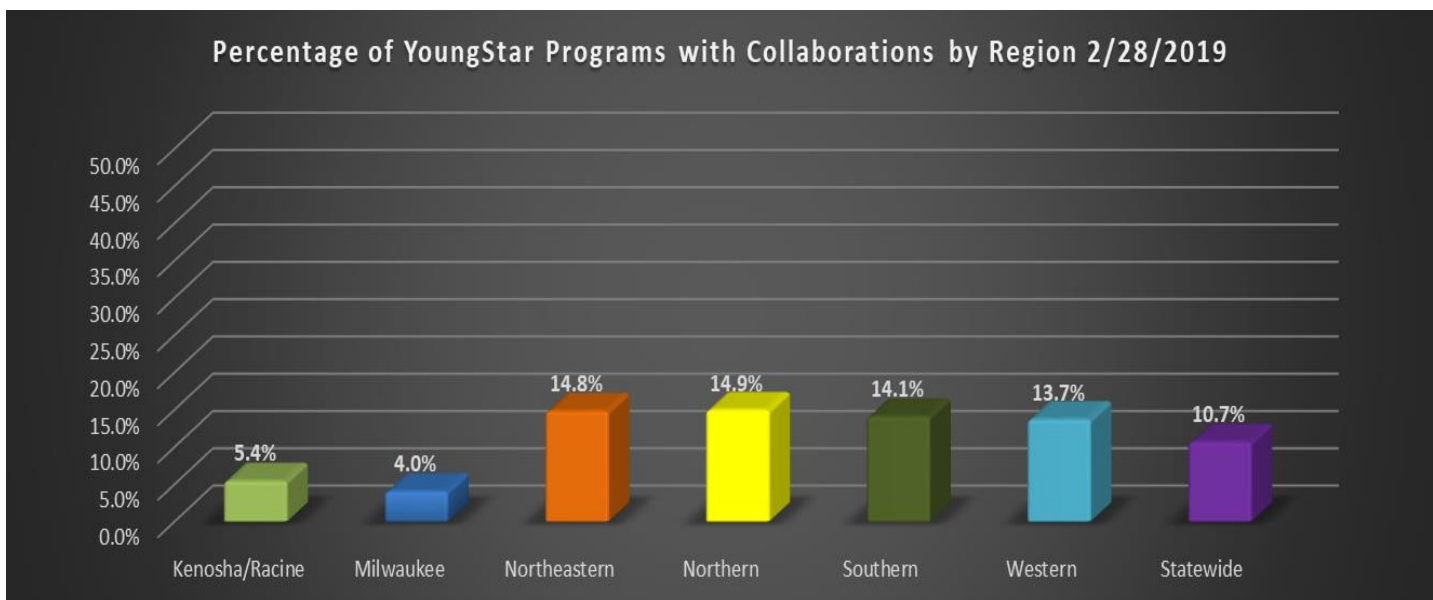
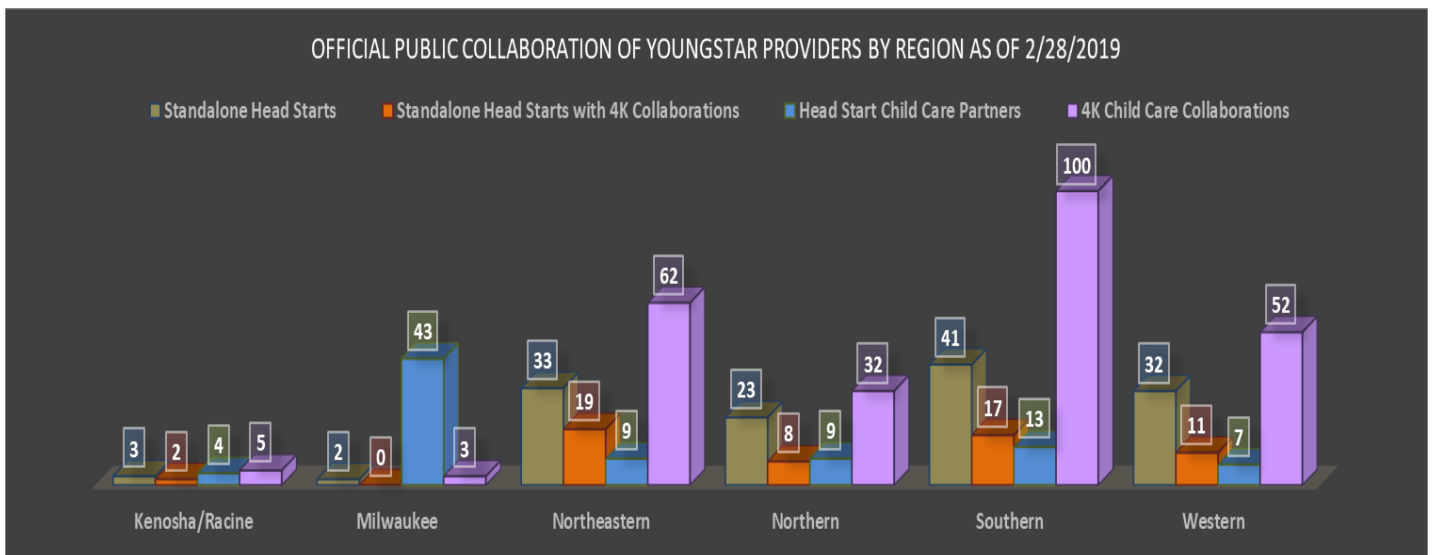


The graph below shows movement in rating levels for providers over the past year.

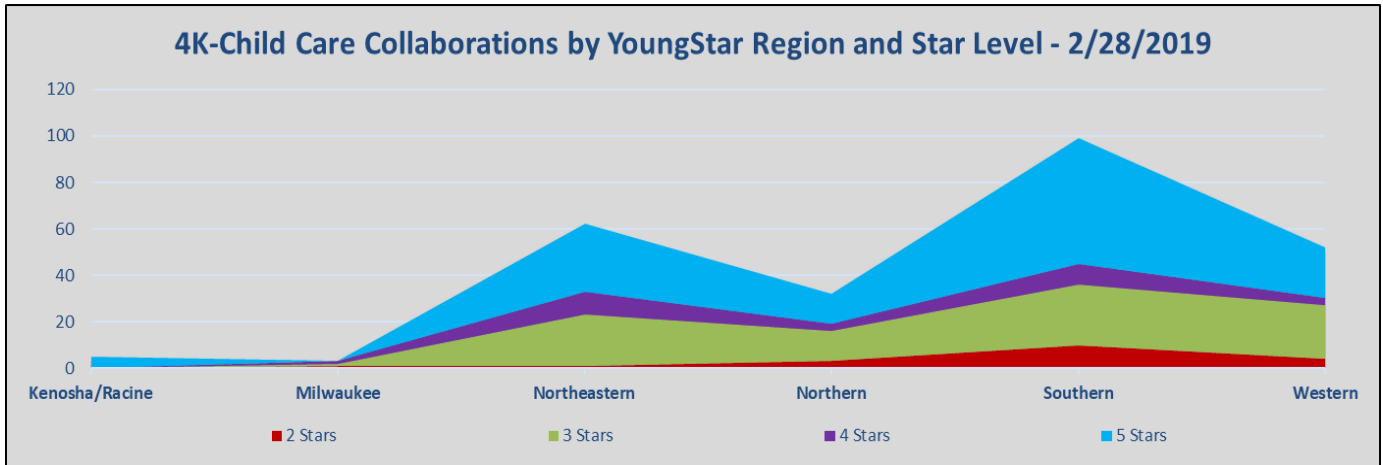


Please see <https://dcf.wisconsin.gov/youngstar/program/impact> for more details.

Region	Standalone Head Starts	Standalone Head Starts with 4K Collaborations	Head Start Child Care Partners	4K Child Care Collaborations	YoungStar Providers
Kenosha/Racine	3	2	4	5	202
Milwaukee	2	0	43	3	1138
Northeastern	33	19	9	62	608
Northern	23	8	9	32	328
Southern	41	17	13	100	924
Western	32	11	7	52	511
<b>Total</b>	<b>134</b>	<b>57</b>	<b>85</b>	<b>254</b>	<b>3711</b>



Data as of 2/28/2019



The Head Start/4K Child Care Collaboration information is based on returned surveys and all programs may not be included.