



Wisconsin Department of
Children and Families

Jeanine B. Settlement Agreement Results January – June 2020

Presentation to Milwaukee Child Welfare Partnership Council

Prepared by:

Wisconsin Department of Children and Families
Division of Management Services
Bureau of Performance Management
Quality Review and Performance Analysis Section

Presentation Date: September 25, 2020

Settlement Agreement Background

1993 – ACLU Children’s Rights Project filed a lawsuit in Federal Court.

1998 – State of Wisconsin assumed responsibility for child welfare in Milwaukee County.

2002 – Lawsuit settled. Settlement requires attainment of specific outcomes for permanency, safety and well-being.

Today – To date, released from 17 of 18 enforceable provisions.

Settlement Agreement: Remaining Enforceable Provision

§I.D.9 Placement Stability

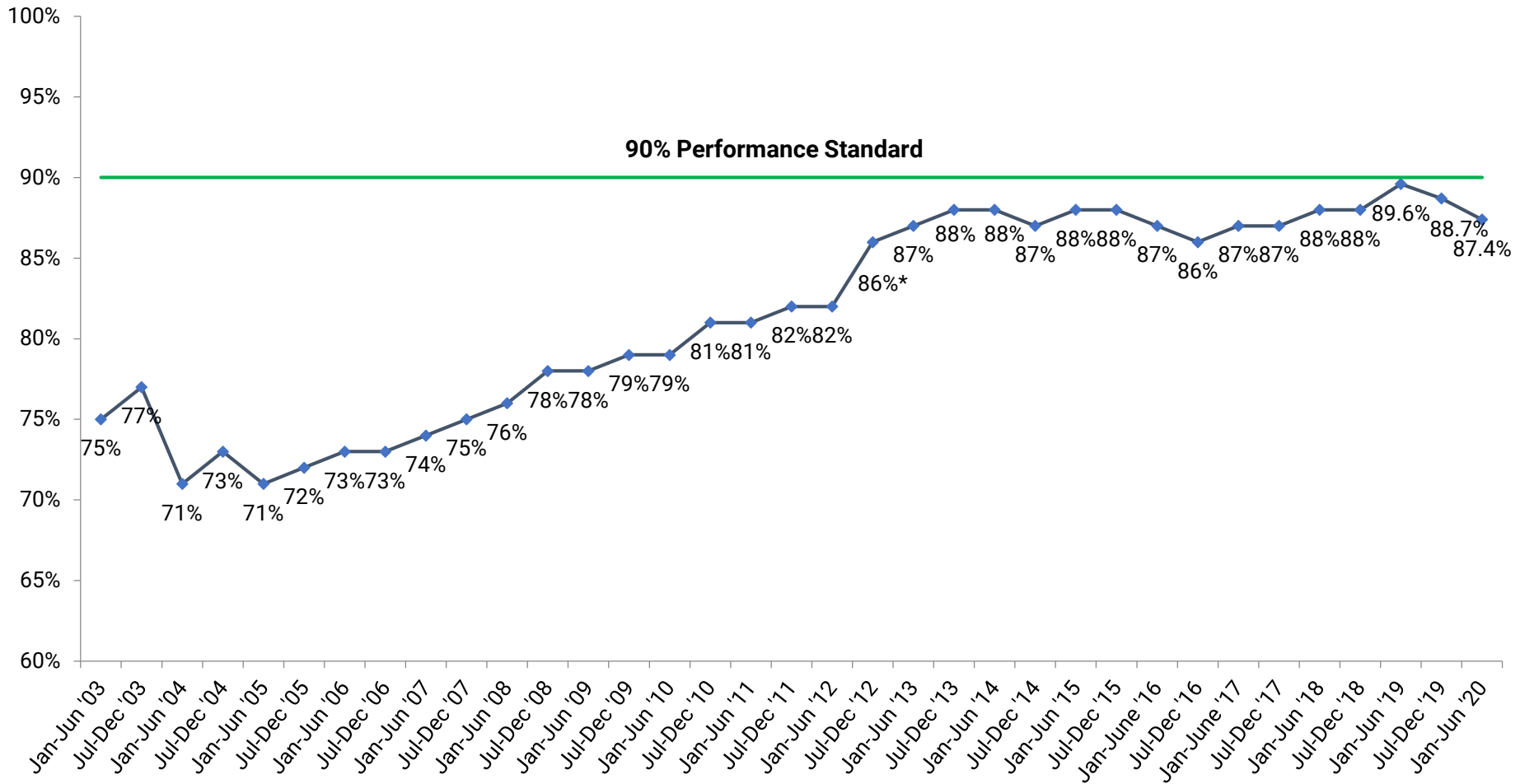
At least 90% of children in DMCPs custody within the period shall have had 3 or fewer placements, during the previous 36 calendar months of their current episode in custody.

2020	
Performance Standard	YTD 2020 Performance
>= 90%	87.4%

I.D.9 Measure Exclusions (modified in 2012):

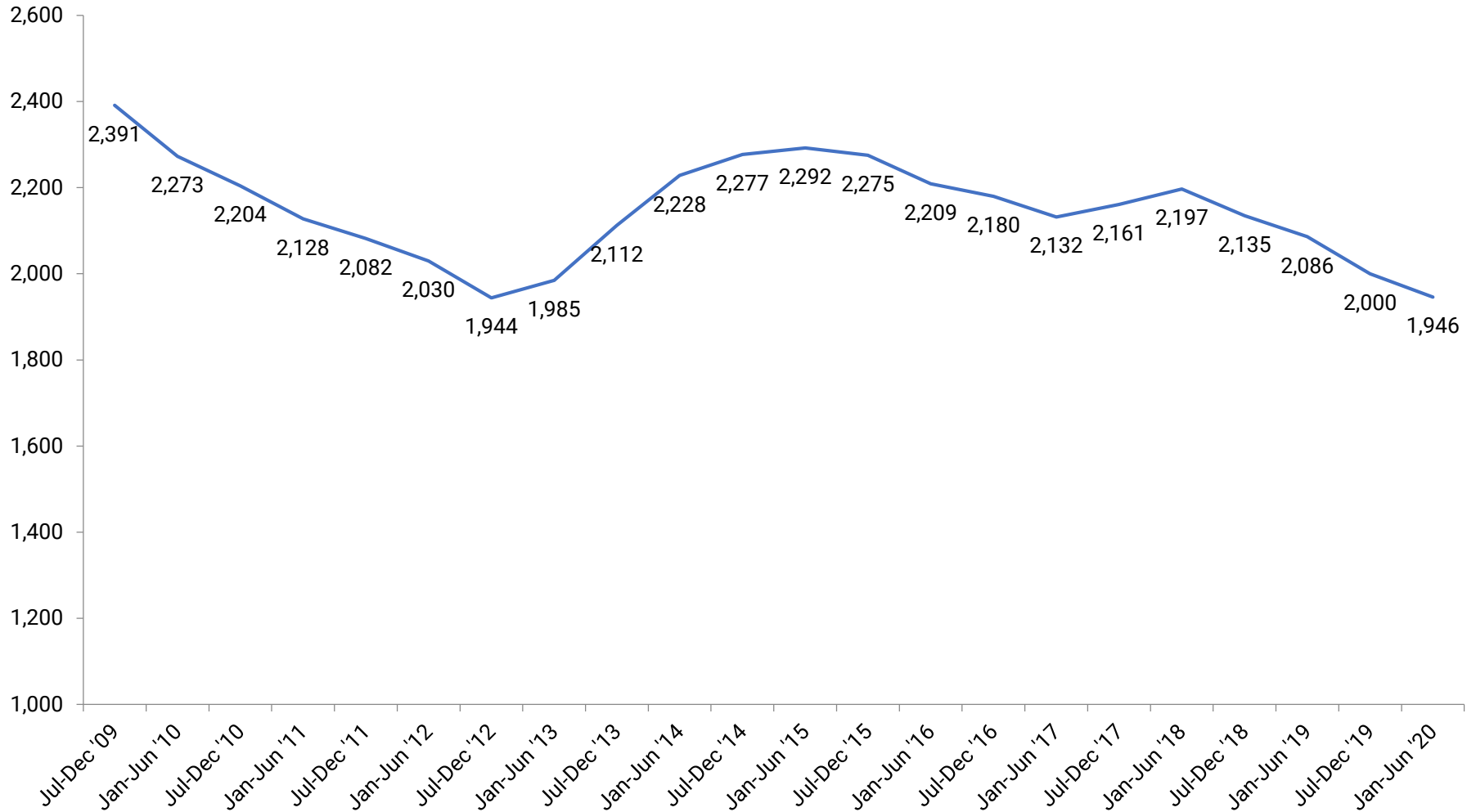
- Initial OHC placement in assessment centers
- Children in DMCPs custody and currently enrolled in the Wraparound Milwaukee program

§I.D.9 Placement Stability: Children who experience 3 or fewer placements* Semi-Annual, 2003 – YTD 2020

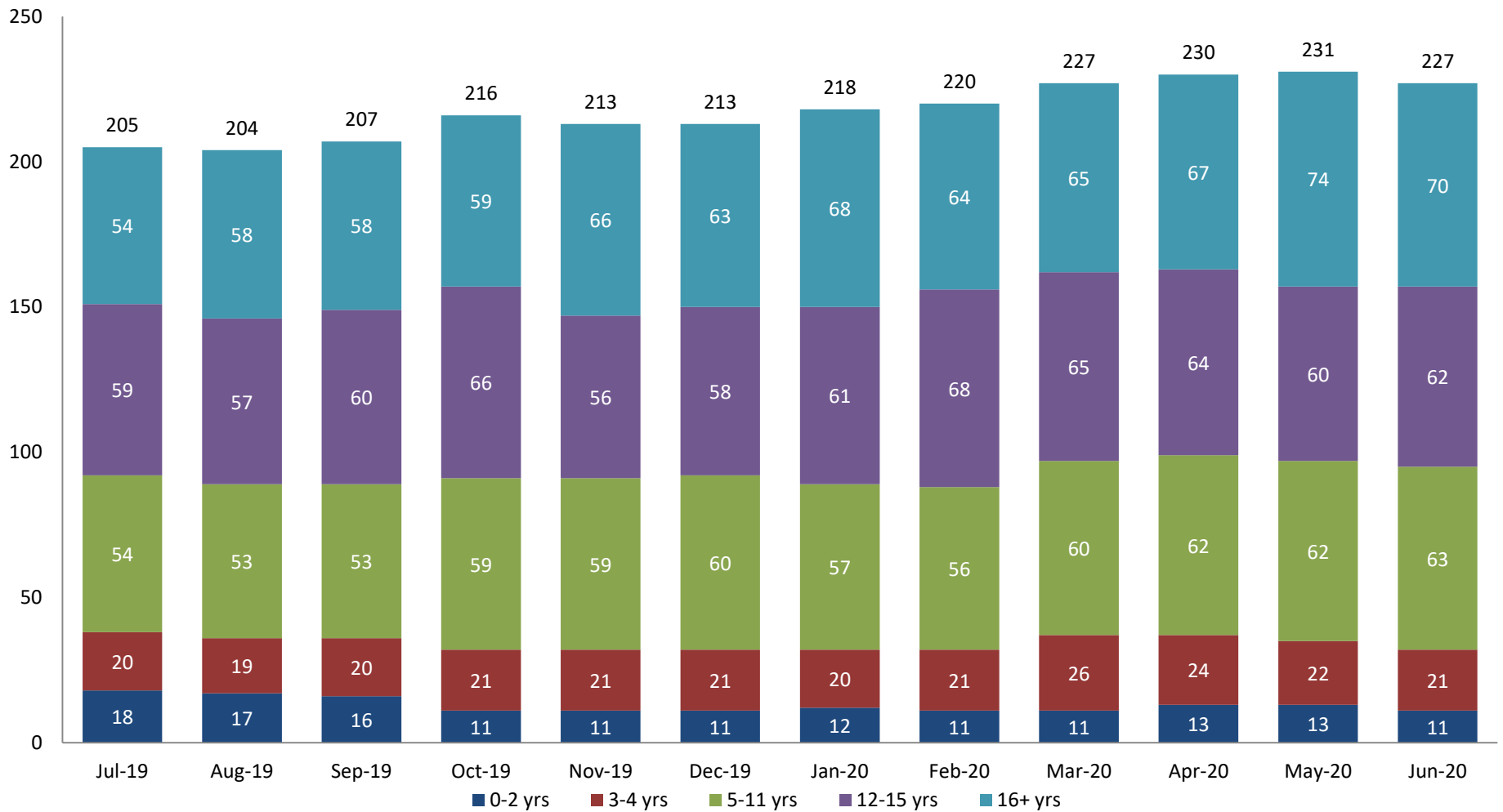


* The formula for this performance standard was modified effective July 1, 2012. (See Slide 3)

§I.D.9 Placement Stability: Average Number of Children in Out-of-Home Care Semi-Annual, 2009 – YTD 2020



§I.D.9 Placement Stability: Children in OHC who experience 4 or more placements By Age Group, July 2019 – June 2020



Settlement Agreement

Provisions no longer subject to enforcement



	CY 2010	CY 2011	CY 2012	CY 2013	CY 2014	CY 2015	CY 2016	CY 2017	CY 2018	CY 2019	YTD 2020
§I.B.2: ASFA - Children Reaching 15 of 22 Months * final performance standard >= 90%	90%	82%	87%	89%	91%	91%	88%	97%	89%	83%	85%
§I.B.3: ASFA - Children Beyond the 15 of 22 Months (cumulative total) * final performance standard >= 90%	90%	91%	100%	100%	100%	100%	100%	100%	0%	100%	80%
§I.B.4: Children in OHC for More Than 24 Months * final performance standard <=25%	14%	11%	12%	11%	11%	12%	14%	13%	12%	12%	12%
§I.B.6: Children Re-unified within 12 Months * final performance standard >= 71%	61%	68%	65%*	70%	62%	58%	54%	58%	63%	49%	57%
§I.B.7: Adoptions within 24 Months of Removal * final performance standard >= 30%	37%	32%	34%	35%	34%	32%	33%	26%	33%	25%	21%
§I.C.1: Maltreatment in OHC - Children in DMCP Custody...Free of Substantiated Abuse or Neglect... * final performance standard <=0.60%	0.24%	0.22%	0.23%	0.15%	0.24%	0.15%	0.22%	0.18%	0.12%	0.23%	0.21%

** DMCP met the performance standard for two consecutive six-month periods

(July - December 2011 and January – June 2012), as required for release from provision.

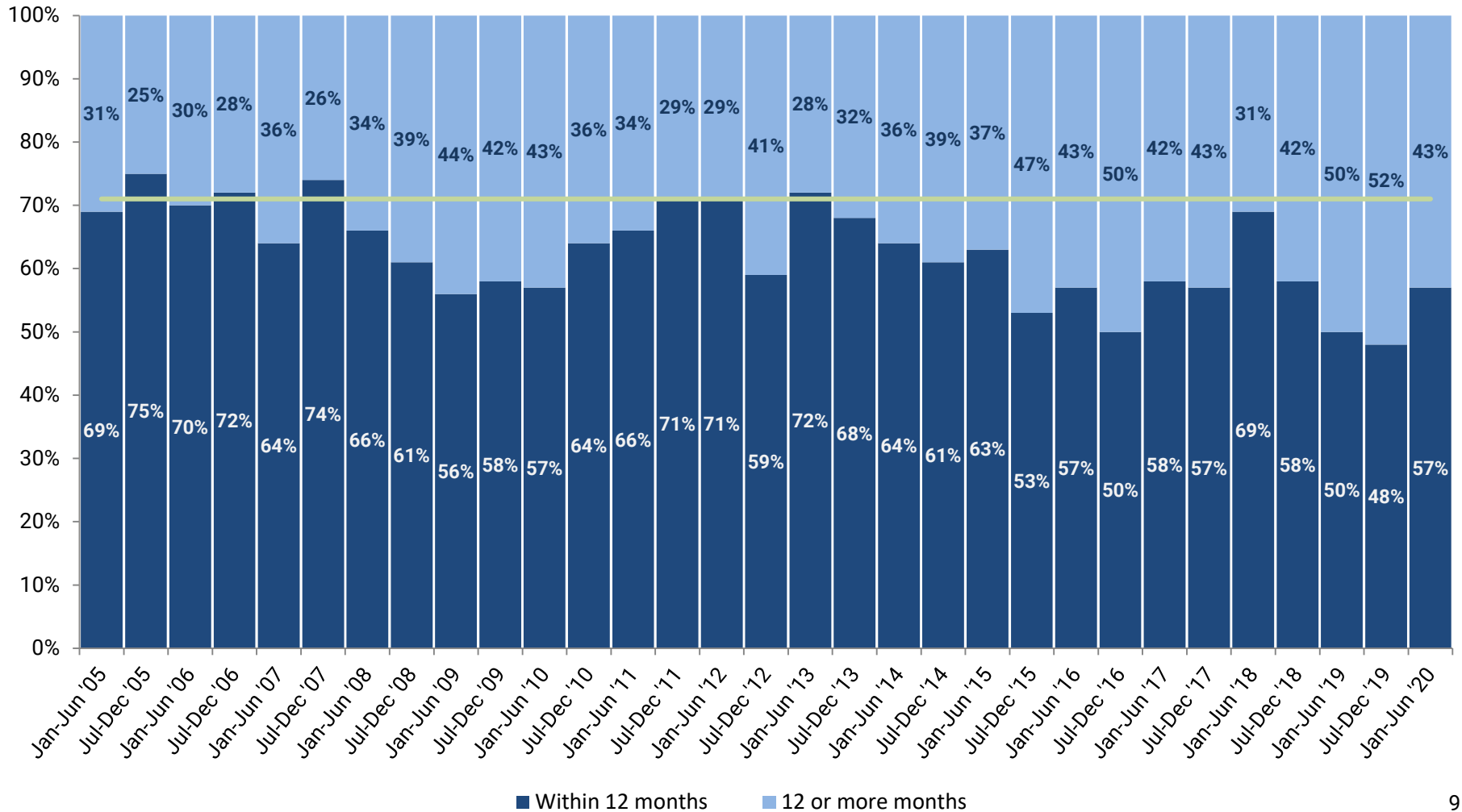
Settlement Agreement: Provisions no longer subject to enforcement (Continued)



	CY 2010	CY 2011	CY 2012	CY 2013	CY 2014	CY 2015	CY 2016	CY 2017	CY 2018	CY 2019	YTD 2020
§I.C.2: Reports of Alleged Maltreatment to Children in OHC to Independent Investigation Agency within 3 Days * final performance standard >= 90%	98%	97%	99%	98%	98%	97%	97%	97%	99%	98%	99%
§I.C.3: Assignment to an Independent Investigator within 3 Days of Receiving Referral * final performance standard >= 90%	100%	100%	100%	100%	100%	98%	99%	98%	99.5%	100%	100%
§I.C.4: Determination of the Independent Investigation within 60 Days * final performance standard >= 90%	100%	99%	98%	100%	97%	97%	94%	99%	100%	98%	100%
§I.D.1-2: Ongoing Caseload Size (Average per Ongoing Case Manager) * ...caseloads not to exceed an average... of 11 families per case carrying manager per site ... (Average)	10	9	8	9	9	8	8	8	8	9	8
§I.D.3: Face-to-Face Contact * ...meets 90% compliance with monthly face-to-face contact.	96%	97%	98%	99%	98%	98%	98%	98%	98%	98%	97%
§I.D.7: Length of Stay in Assessment Centers * ...placement in such centers follows applicable state law.	97%	100%	100%	100%	98%	98%	98%	99%	96%	95%	98%

Bold values in cells indicate that the performance met the standard for that period allowing for release from the provision.

No Longer Enforceable: §I.B.6 Reunification Reunification Performance (Children who returned home to their families) Semi-Annual, 2005 – YTD 2020

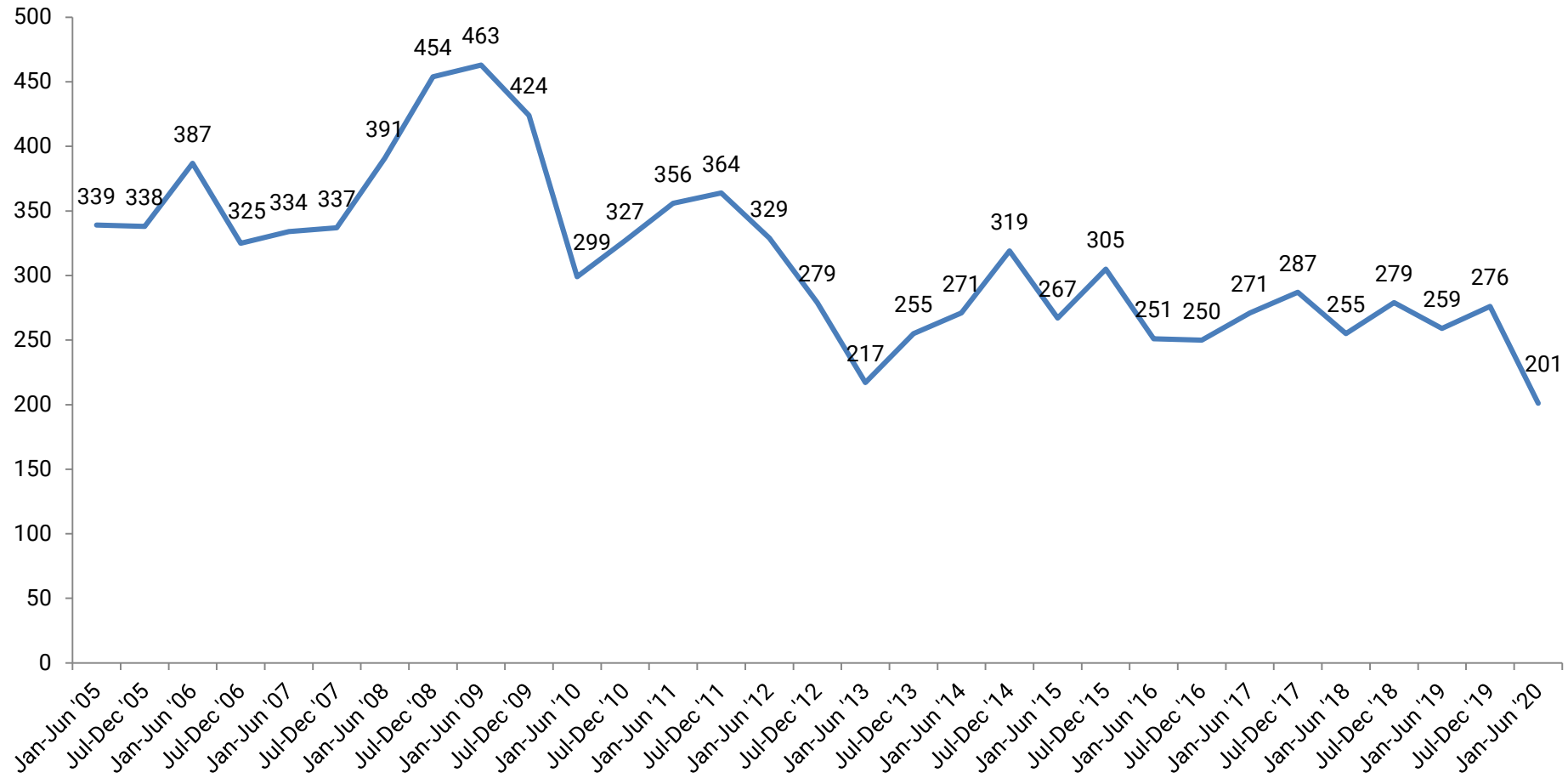


No Longer Enforceable: §I.B.6 Reunification

Total Number of Reunifications

(Children who returned home to their families)

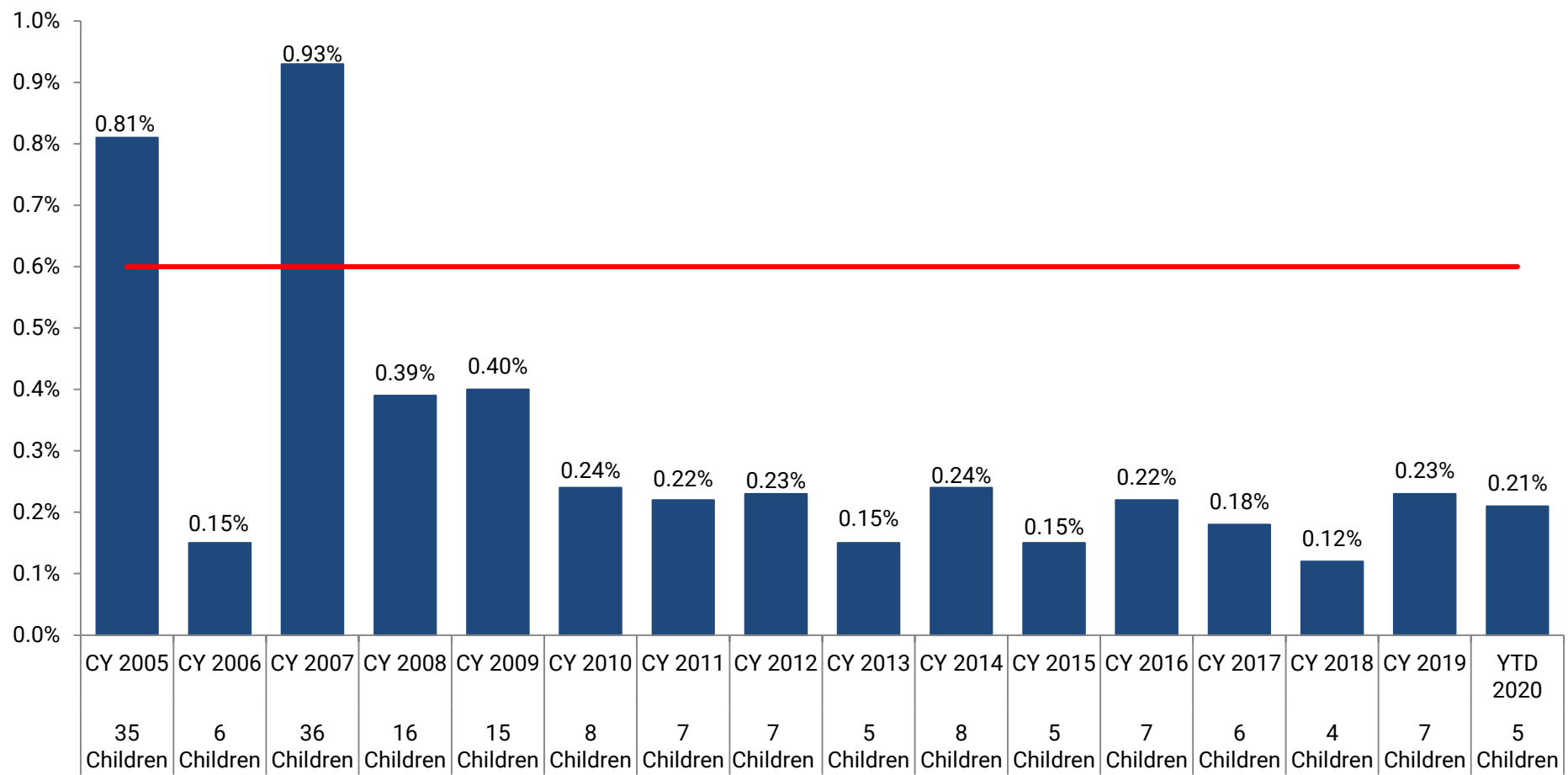
Semi-Annual, 2005 – YTD 2020



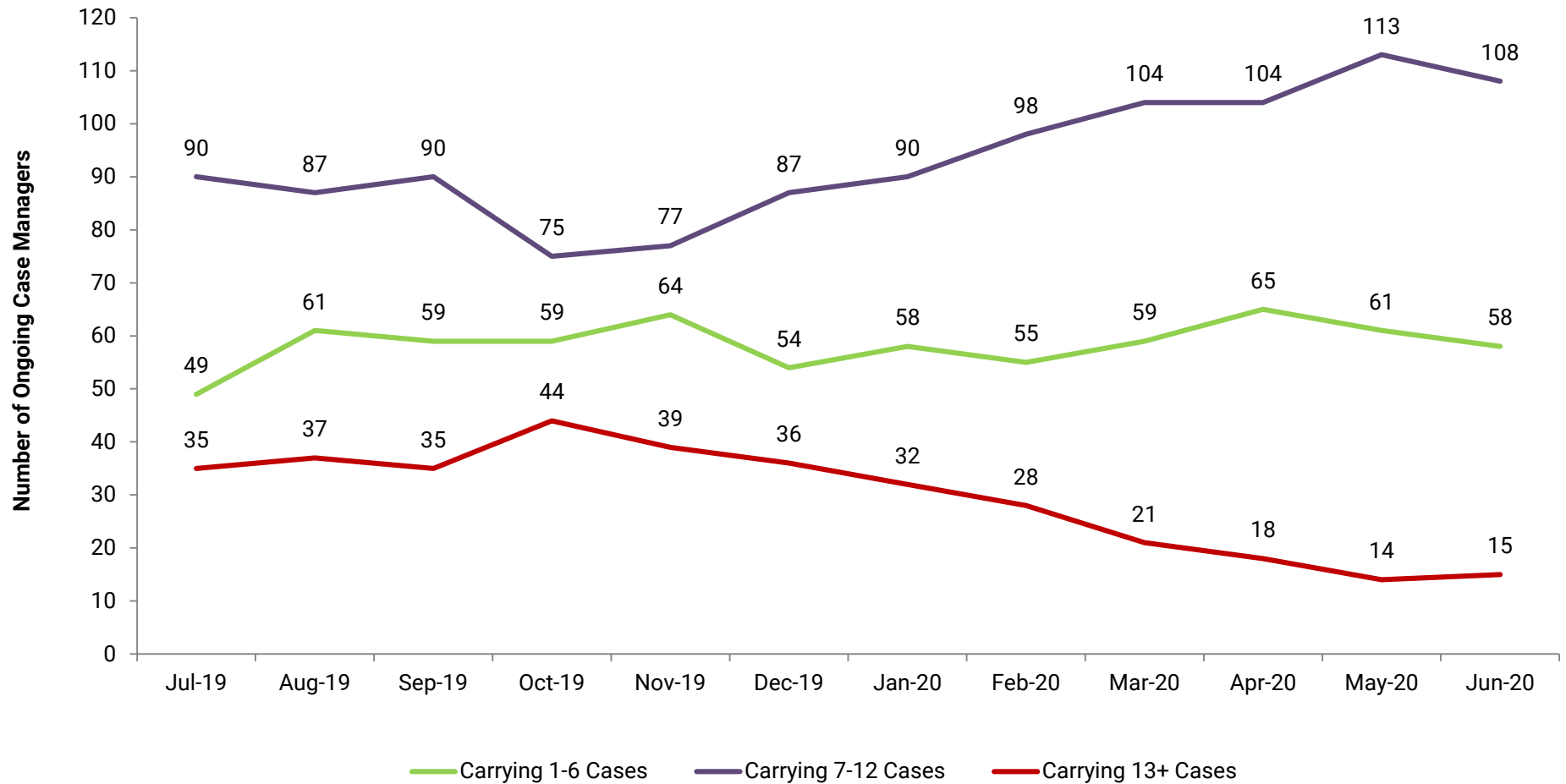


No Longer Enforceable: §I.C.1 Maltreatment in Out-of-Home Care

Percent of Maltreatment in Out-of-Home Care, Annually 2005 – YTD 2020



No Longer Enforceable: §I.D.1-2 Ongoing Caseload Size By Number of Cases (Grouping) July 2019 – June 2020



Settlement Agreement: No Longer Enforceable - Process Indicators and Outcomes



	CY 2010	CY 2011	CY 2012	CY 2013	CY 2014	CY 2015	CY 2016	CY 2017	CY 2018	CY 2019	YTD 2020
Family Assessments	90%	95%	91%	98%	85%	82%	89%	85%	85%	85%	95%
Initial Health Screens	89%	86%	88%	75%	71%	83%	88%	87%	93%	92%	92%
Placement Packets	97%	73%	77%	92%	92%	94%	94%	97%	90%	94%	84%
Annual Medical Exams	91%	95%	94%	94%	91%	89%	91%	93%	93%	93%	91%
Annual Dental Exams	87%	92%	86%	84%	76%	74%	79%	81%	83%	81%	76%
Initial Permanency Plans	85%	87%	80%	84%	70%	76%	86%	85%	85%	81%	85%
Annual & Administrative Permanency Plan Reviews	95%	93%	93%	94%	93%	92%	92%	96%	95%	95%	93%
Re-Entry Within 12 Months	10%	8%	9%	6%	6%	9%	7%	7%	7%	7%	8%
Ongoing Case Manager Turnover	25%	34%	25%	39%	34%	32%	29%	28%	33%	34%	13%
Children Per Caseload (12 Month Average)	17.1	15.7	14.2	13.6	15.5	13.6	13.2	13.3	13.4	14.2	13.3

BOLD font indicates that performance has improved compared to the previous review period.



Jeanine B. Settlement Agreement 2020 Semi-Annual Report

For more information or copies of this
presentation, please contact
DCF's Communications Director,
Thomas McCarthy at:

Thomas.McCarthy@Wisconsin.gov



Response – Plaintiff’s Counsel

Eric Thompson, Children’s Rights, Inc.

Comments – Ongoing Agencies

Dwayne Marks, SaintA

Susanna Leggio , Children's Wisconsin – Community
Services



Comments – DMCPS

DMCPS Administrator Charmian Klyve



Settlement Report

Questions