



WISCONSIN DEPARTMENT OF  
CHILDREN AND FAMILIES

# Jeanine B. Settlement Agreement 2016 Presentation to the Milwaukee Child Welfare Partnership Council

Prepared by:

Wisconsin Department of Children and Families  
Division of Management Services  
Bureau of Performance Management  
Quality Review and Performance Analysis Section

March 24, 2017

# Settlement Agreement Background



**1993** – ACLU Children’s Rights Project filed a lawsuit in Federal Court.

**1998** – State of Wisconsin assumed responsibility for child welfare in Milwaukee County.

**2002** – Lawsuit settled. Settlement requires attainment of specific outcomes for permanency, safety and well-being.

**Today** – To date, released from 17 of 18 enforceable provisions.

# Settlement Agreement: Remaining Enforceable Provision



## §I.D.9 Placement Stability

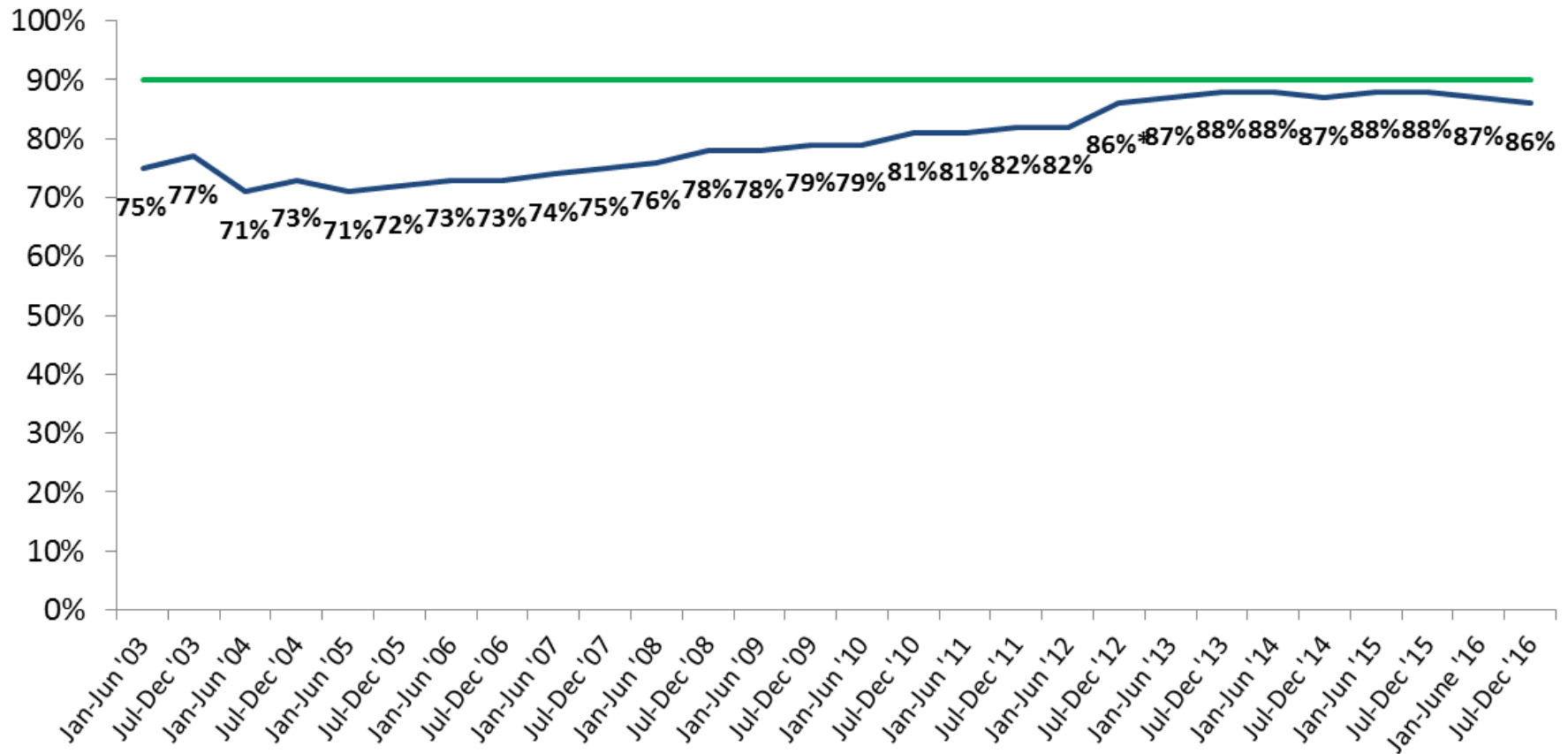
At least 90% of children in DMCPs custody within the period shall have had 3 or fewer placements during the previous 36 calendar months of their current episode in custody.

2016	
Performance Standard	CY 2016 Performance
$\geq 90\%$	87%

I.D.9 Measure Exclusions (modified in 2012):

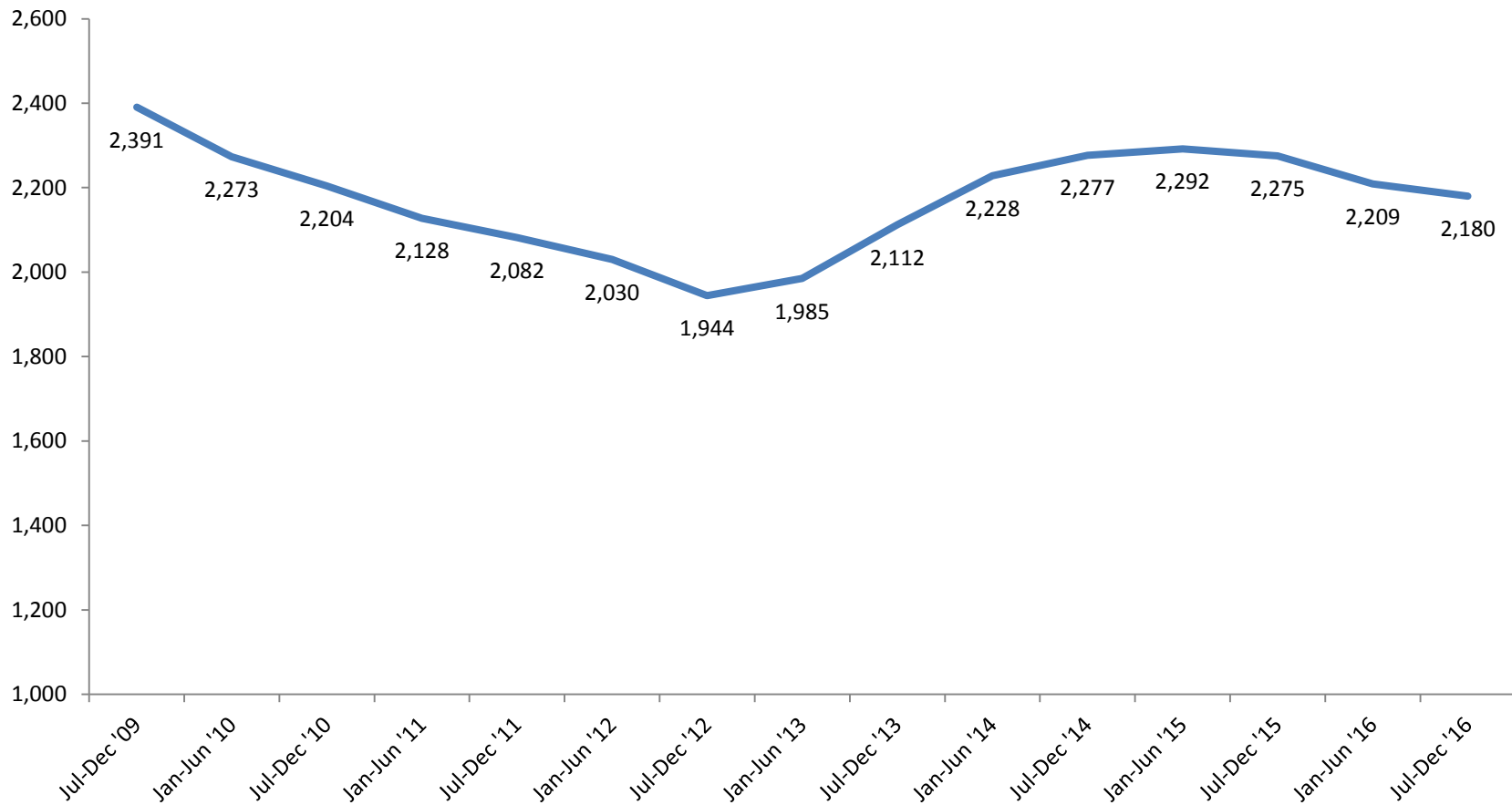
- Initial placement in assessment centers
- Children in DMCPs custody and currently enrolled in the Wraparound Milwaukee program

# §I.D.9 Placement Stability: Children who experience 3 or fewer placements Semi-Annual, 2003 –2016

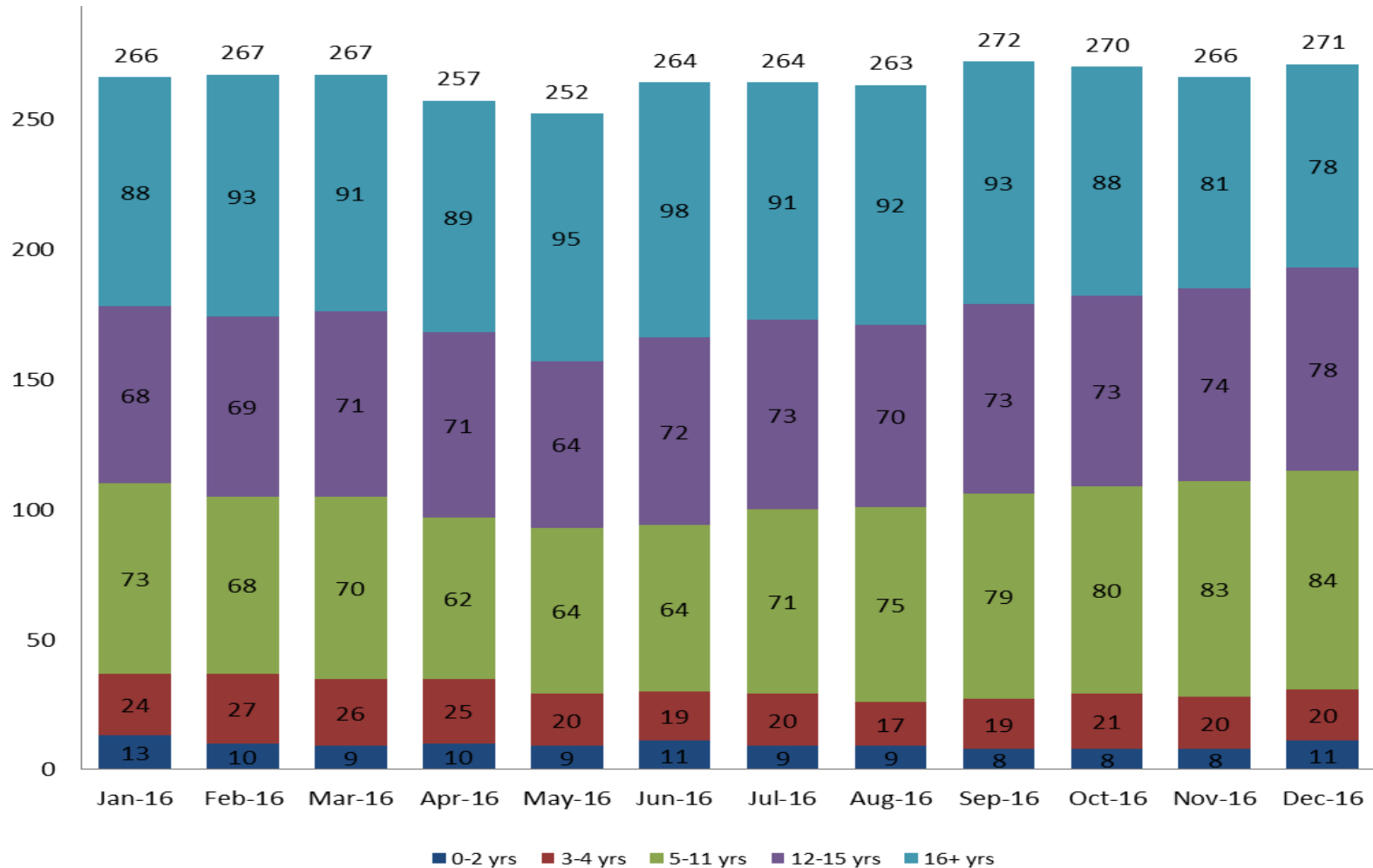


\* The formula for this performance standard was modified effective July 1, 2012. (See Slide 3)

# §I.D.9 Placement Stability: Number of Children in Out-of-Home Care Semi-Annual Average, July 2009 – 2016



# §I.D.9 Placement Stability: Children in OHC who experience 4 or more placements By age and month, 2016



# Settlement Agreement:

## Provisions no longer subject to enforcement



	CY 2005	CY 2006	CY 2007	CY 2008	CY 2009	CY 2010	CY 2011	CY 2012	CY 2013	CY 2014	CY 2015	CY 2016
§I.B.2: ASFA - Children Reaching 15 of 22 Months * final performance standard $\geq 90\%$	29%	79%	85%	<b>90%</b>	88%	90%	82%	87%	89%	91%	91%	88%
§I.B.3: ASFA - Children Beyond the 15 of 22 Months (cumulative total) * final performance standard $\geq 90\%$	<b>93%</b>	89%	90%	95%	95%	90%	91%	100%	100%	100%	100%	100%
§I.B.4: Children in OHC for More Than 24 Months * final performance standard $\leq 25\%$	23%	<b>18%</b>	18%	18%	16%	14%	11%	12%	11%	11%	12%	14%
§I.B.6: Children Re-unified within 12 Months * final performance standard $\geq 71\%$	72%	71%	69%	64%	57%	61%	68%	<b>65%*</b>	70%	62%	58%	54%
§I.B.7: Adoptions within 24 Months of Removal * final performance standard $\geq 30\%$	22%	32%	<b>34%</b>	38%	33%	37%	32%	34%	35%	34%	32%	33%
§I.C.1: Maltreatment in OHC - Children in DMCPs Custody...Free of Substantiated Abuse or Neglect... * final performance standard $\leq 0.60\%$	0.81%	0.15%	0.93%	<b>0.39%</b>	0.40%	0.24%	0.22%	0.23%	0.15%	0.24%	0.15%	0.22%

\* DMCPs met the performance standard for two consecutive six-month periods (July - December 2011 and January - June 2012), as required for release from provision.

# Settlement Agreement:

## Provisions no longer subject to enforcement

(continued from previous page)



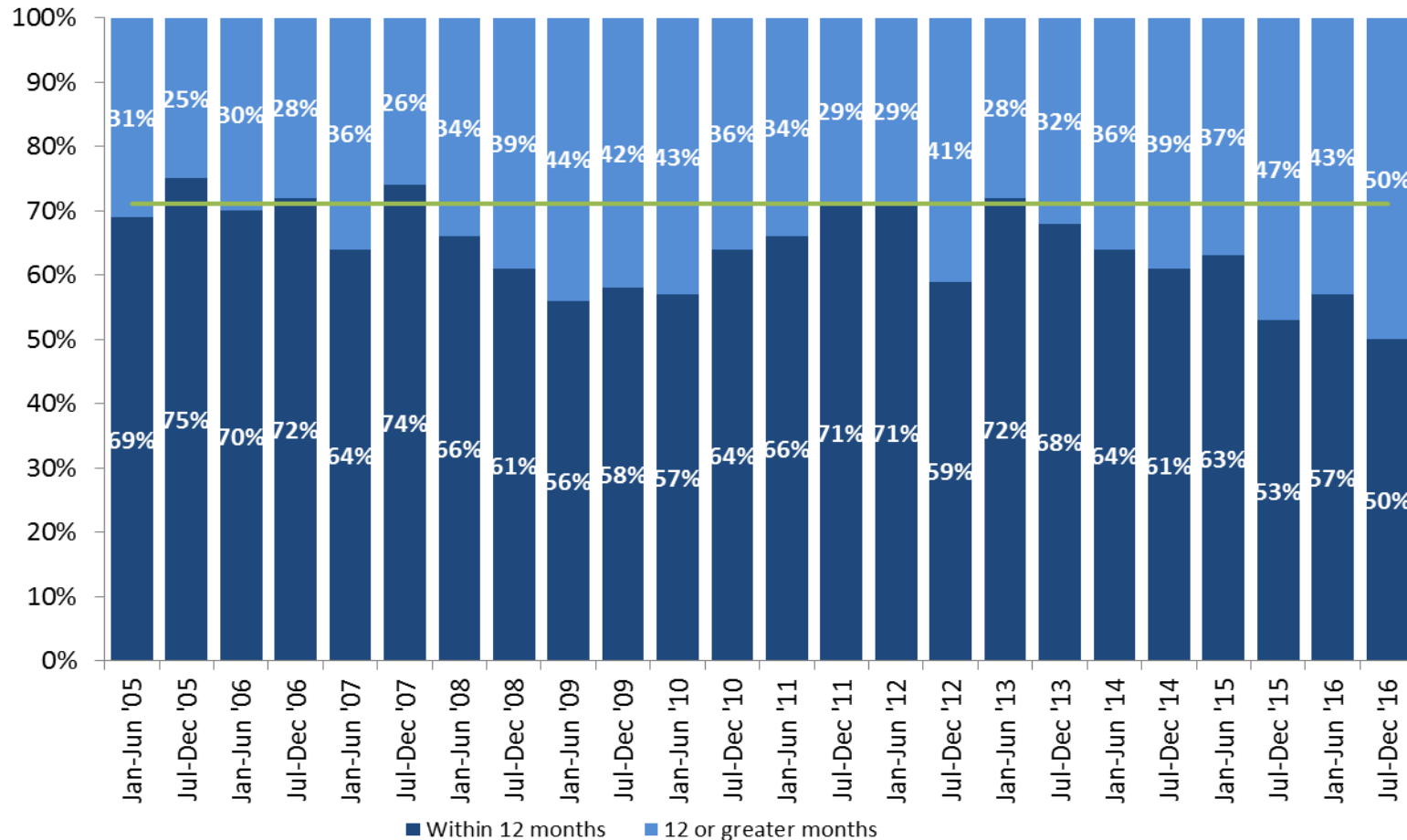
	CY 2005	CY 2006	CY 2007	CY 2008	CY 2009	CY 2010	CY 2011	CY 2012	CY 2013	CY 2014	CY 2015	CY 2016
§I.C.2: Reports of Alleged Maltreatment to Children in OHC to Independent Investigation Agency within 3 Days * final performance standard $\geq 90\%$	99%	<b>97%</b>	98%	95%	99%	98%	97%	99%	98%	98%	97%	97%
§I.C.3: Assignment to an Independent Investigator within 3 Days of Receiving Referral * final performance standard $\geq 90\%$	99%	<b>96%</b>	98%	100%	100%	100%	100%	100%	100%	100%	98%	99%
§I.C.4: Determination of the Independent Investigation within 60 Days * final performance standard $\geq 90\%$	99%	<b>98%</b>	96%	100%	100%	100%	99%	98%	100%	97%	97%	94%
§I.D.1-2: Ongoing Caseload Size (Average per Ongoing Case Manager) * ...caseloads not to exceed an average... of 11 families per case carrying manager per site ... (Average)	10	<b>10</b>	12	11	11	10	9	8	9	9	8	8
§I.D.3: Face-to-Face Contact * ...meets 90% compliance with monthly face-to-face contact.	97%	<b>97%</b>	96%	92%	94%	96%	97%	98%	99%	98%	98%	98%
§I.D.7: Length of Stay in Assessment Centers * ...placement in such centers follows applicable state law.	82%	79%	76%	76%	78%	<b>97%</b>	100%	100%	100%	98%	98%	98%



# No Longer Enforceable: §I.B.6 Reunification

## Semi-Annual Reunification Performance, 2005 – 2016

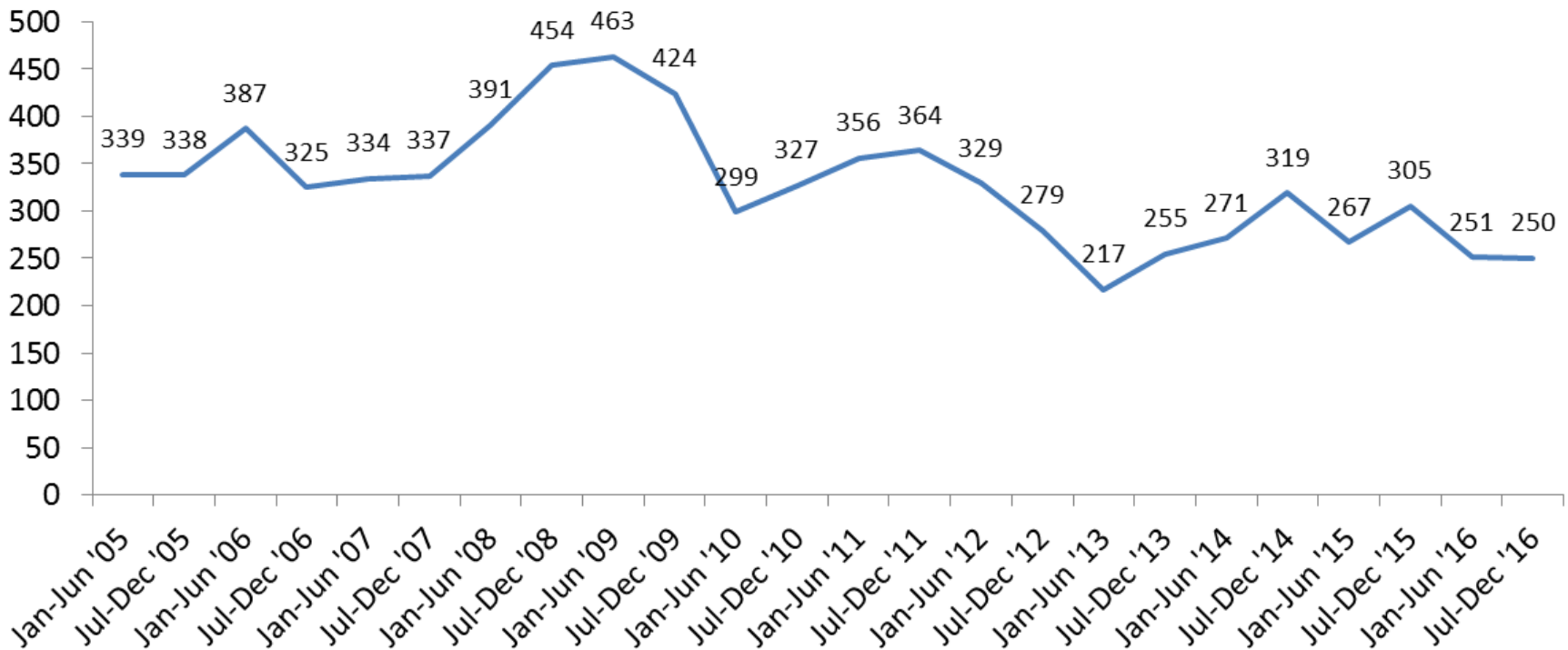
(Children who returned home to their families)



# No Longer Enforceable: §I.B.6 Reunification

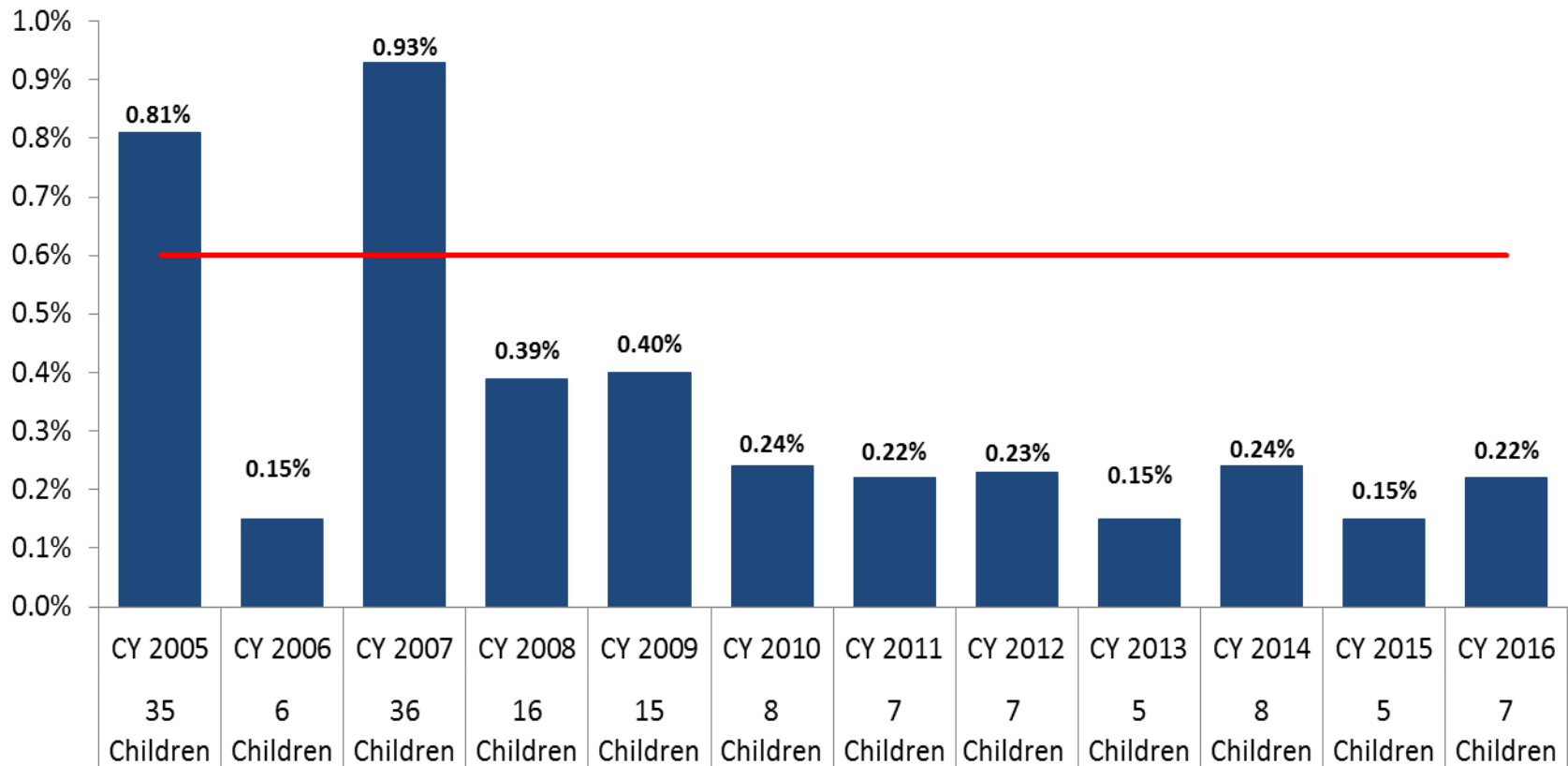
## Semi-Annual Total Reunification, 2005 – 2016

(Children who returned home to their families)

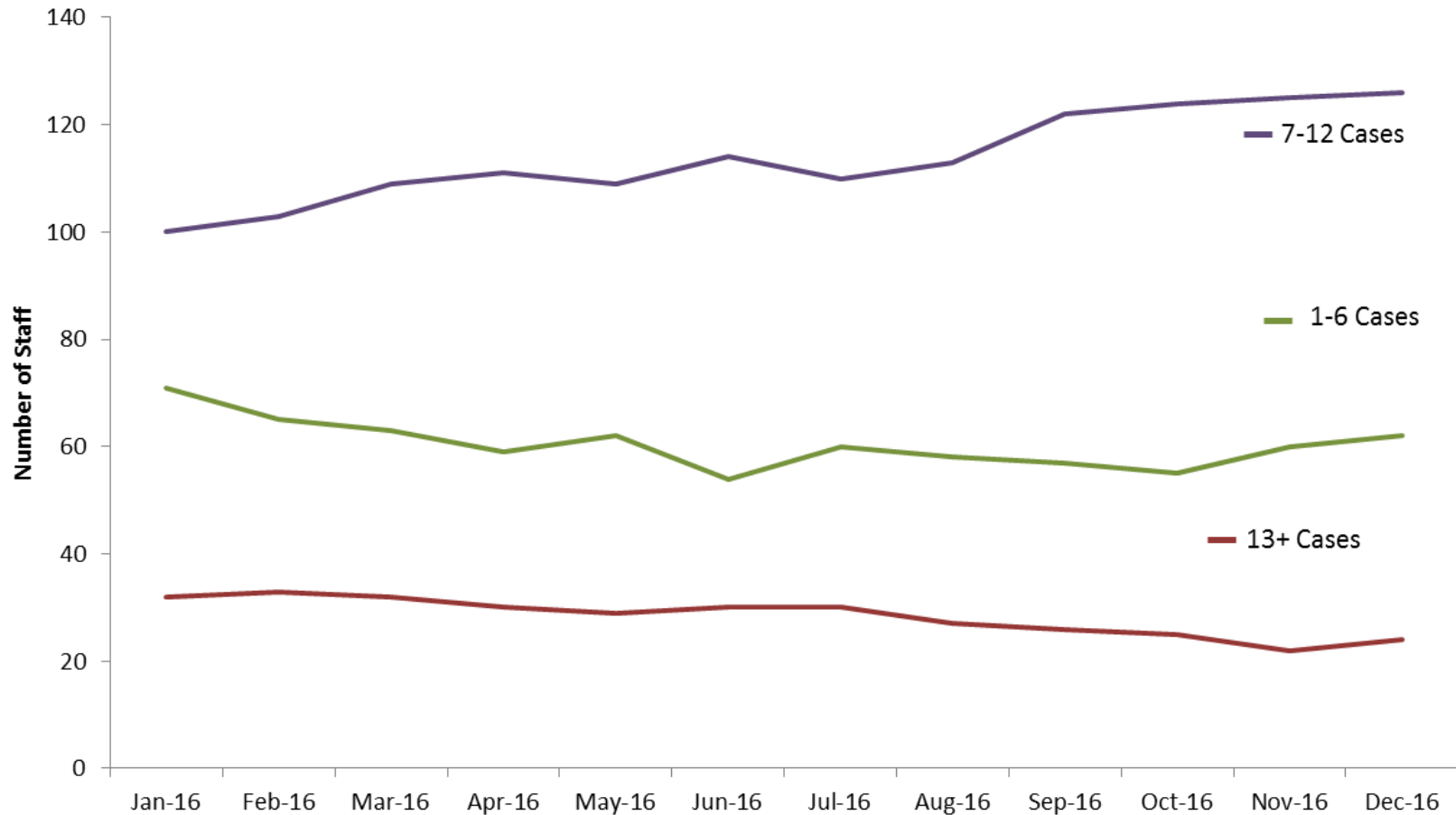


# No Longer Enforceable: §I.C.1 Maltreatment in Out-of-Home Care

## Semi-Annual Rate of Maltreatment in Out-of-Home Care, 2005 –2016



# No Longer Enforceable: §I.D.1-2 Ongoing Caseload Size by Identified Caseload Size Groupings By month, 2016



# Settlement Agreement: Process Indicators and Outcomes



	CY 2005	CY 2006	CY 2007	CY 2008	CY 2009	CY 2010	CY 2011	CY 2012	CY 2013	CY 2014	CY 2015	CY 2016
Family Assessments	95%	95%	88%	66%	96%	90%	95%	91%	98%	85%	82%	<b>89%</b>
Initial Health Screens	67%	75%	61%	62%	69%	89%	86%	88%	75%	71%	83%	<b>88%</b>
Placement Packets	97%	73%	86%	88%	92%	97%	73%	77%	92%	92%	94%	94%
Annual Medical Exams	73%	85%	78%	80%	91%	91%	95%	94%	94%	91%	89%	<b>91%</b>
Annual Dental Exams	64%	78%	67%	68%	87%	87%	92%	86%	84%	76%	74%	<b>79%</b>
Initial Permanency Plans	98%	95%	90%	82%	82%	85%	87%	80%	84%	70%	76%	<b>86%</b>
Annual & Administrative Permanency Plan Reviews	92%	91%	92%	85%	85%	95%	93%	93%	94%	93%	92%	92%
Re-Entry Within 12 Months	7%	10%	11%	8%	8%	10%	8%	9%	6%	6%	9%	<b>7%</b>
Ongoing Case Manager Turnover	33%	26%	34%	35%	30%	25%	34%	25%	39%	34%	32%	<b>29%</b>
Children Per Caseload (12 Month Average)	17	18.4	21.9	20.9	20.2	17.1	15.7	14.2	13.6	15.5	13.6	<b>13.2</b>

**BOLD** font indicates that performance has improved compared to the previous review period.

# Settlement Agreement



For more information or copies of this  
presentation,  
please contact Joe Scialfa at:

[Joe.Scialfa@wisconsin.gov](mailto:Joe.Scialfa@wisconsin.gov)