

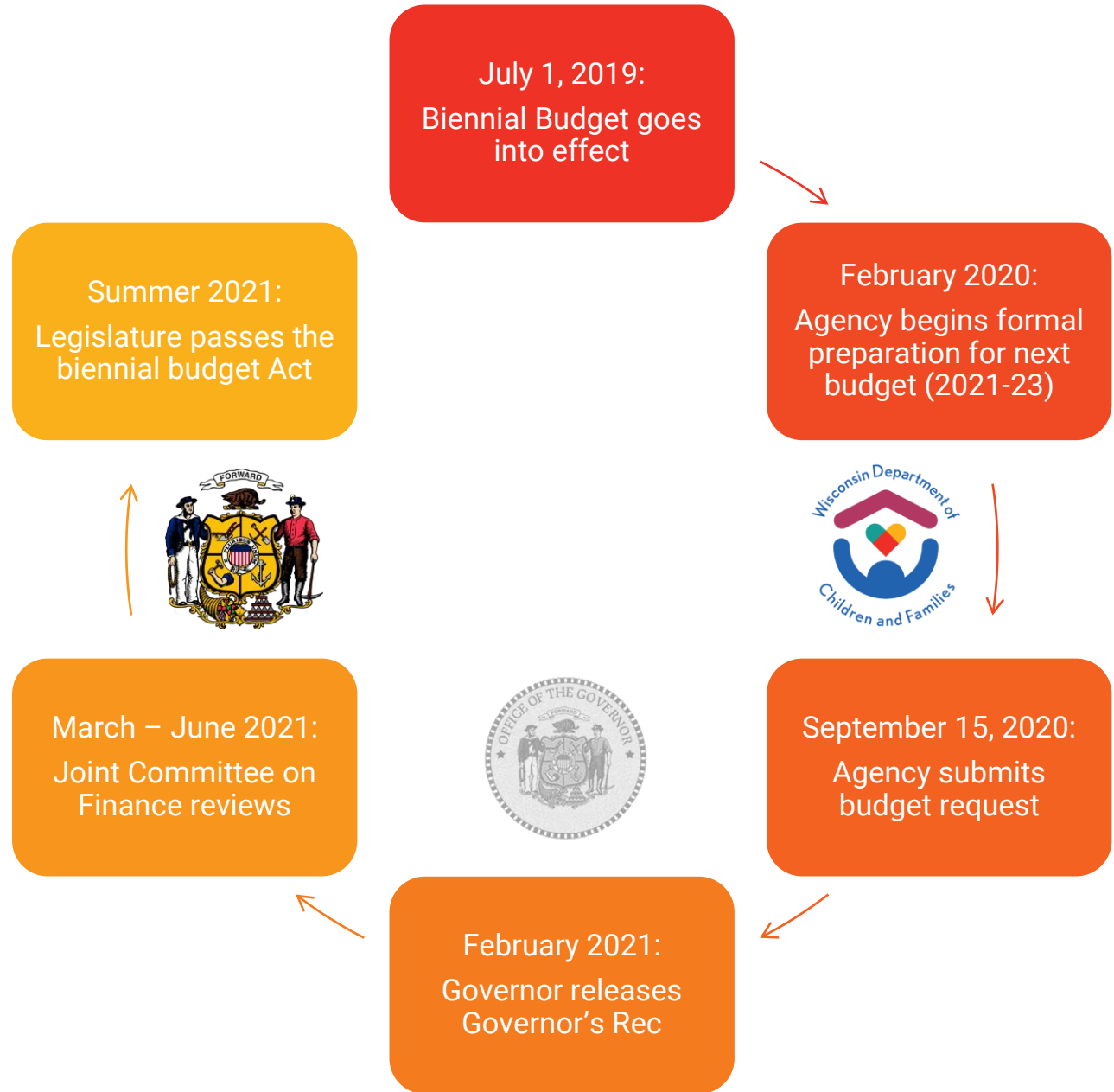
DSP Biennial Budget Briefing

What's in it for kids and families?



Wisconsin Department of Children and Families

Wisconsin Biennial Budget Cycle

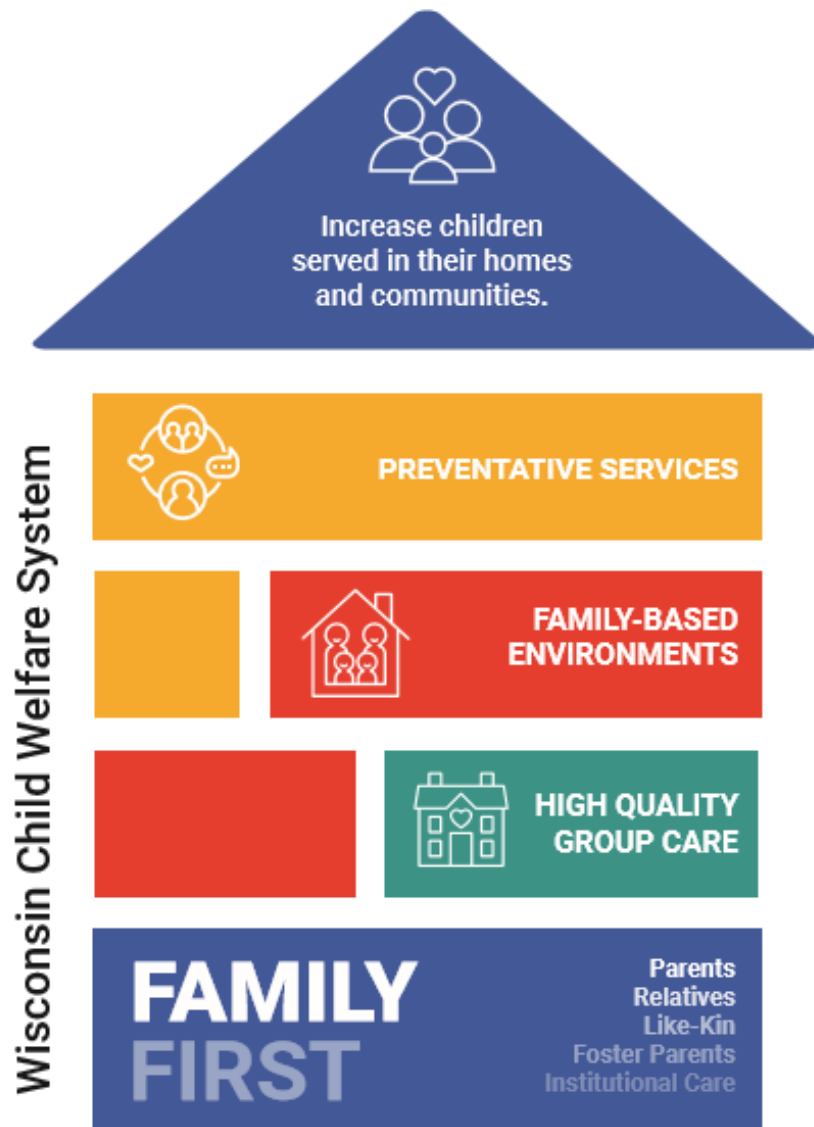


**Investments across
the entire community
will enable us to meet
our vision.**



All Wisconsin children are safe and loved members
of thriving families and communities





By focusing across the continuum, we can continue to support families where they need it most.

We will strengthen all Wisconsin families to support their children because children belong with their families.



Historic Investments in Supporting Families Involved in the Child Welfare System

- Child and family focused
- Research based
- Community oriented



Investment in providing in-home services to families

- Invests \$12 million in new in-home service interventions to support efforts in several counties to keep families together
 - Build evidence-based prevention services and other family supports
 - Keep families together and reduce use of out-of-home care



Increased support for relative caregivers and foster care providers

- Increase monthly kinship care rates from \$254 to \$300
 - Reliance on relatives to care for their family members, but payments have lagged
 - Supports keeping children with family when they cannot be safely maintained in their home
- Increase the monthly foster care level 1 rate from \$254 to \$300
- Increase monthly age based foster care rates for level 2 and above by 2.5% each calendar year



Targeted improvements in congregate care settings

- Allow certification of qualified residential treatment programs (QRTP) to comply with the federal Family First Prevention and Services Act (FFPSA)
- Invest \$200,000 in training providers to deliver quality services and supports to children and youth
- Invest nearly \$400,000 to support centralized nursing services to meet federal FFPSA requirements
- Provide funding for a state-supported QRTP located in Milwaukee to serve high-needs youth who may otherwise be sent out of state \$1.3 Million



Other Targeted Supports

Expand adoption recruitment in Milwaukee County

- Provide \$300,000 annually to expand the *Wendy's Wonderful Kids* adoption recruitment program in Milwaukee

Maintain sibling connections

- Provide \$75,000 for a grant program to provide siblings separated in out-of-home care with opportunities to be reunited, such as summer camps



Update training program for new child welfare workers

- Invest \$1.5 million in the development and design of a new training program for child welfare workers
- Improve the quality and consistency of the learning experience new workers across the state
- Better prepare workers to effectively serve families
- Improve worker retention



Comprehensive Youth Justice System Reform and Investment

- Youth focused
- Research based
- Community oriented



Reshape the youth justice system to align with best practice and research on adolescent brain development

- Raise the lower age of delinquency from 10 to 12
- Eliminate automatic adult court jurisdiction of children
- Limit waivers to adult court
- Return 17-year-olds to the youth justice system



Invest in community-based youth justice treatment and services

- Currently there is no foundational training for Youth Justice workers.
- Foundational training was identified by our stakeholders as an area of significant need.
- The bill invests nearly \$1 million in establishing a statewide training system.
- Provide a baseline of knowledge and quality for youth justice agencies throughout the state to more effectively work with youth and families.



Invest in community-based youth justice treatment and services

- Many communities lack the intensive, targeted services needed to keep youth safely at home.
- The bill invests nearly \$9 million in a grant program for several youth justice agencies to significantly elevate their case management practices and use of intensive, evidence-based treatment services.
- Aligns with investment in child welfare prevention services to create a fabric of community-based services for children and youth



Invest in community-based youth justice treatment and services

- Young people are being sent out of state because agencies cannot find placements for them in Wisconsin.
- The bill invests \$1.5 million in a grant program for out-of-home care providers—one congregate care setting and one or more treatment foster home providers—to provide intensive services specifically for justice-involved youth who require treatment services in an out-of-home setting.
- Aligns with targeted investments to improve quality of out-of-home care and serve complex youth close to home



Supporting Older Youth

- Support youth no matter what door they enter the system
- Striving to transition to successful adulthood
- Need for multi-faceted, community-based supports



Independent Living Expansion

- Services for youth who have aged out of care in the child welfare or youth justice systems are solely supported by federal funding, resulting in overly narrow eligibility requirements.
- Adds \$0.5 million to the independent living program to allow expansion of eligibility so that youth:
 - No longer must age out of care to be eligible – this means that youth who reunify shortly before turning 18 can still access needed supports
 - Are eligible for services to age 23, instead of just age 21



Driver's Education and Licensing

- Driving is not only a rite of passage for young people, it is an essential pathway to employment and higher educational opportunities.
- The bill provides \$203,000 to fund the costs of driver's education and driver licensing fees for young people in out-of-home care.



Consolidating youth-serving programs

- Current funding and statutory authority for youth-serving programs is siloed and fragmented – individual funding for runaway and homeless youth, youth affected by sex trafficking, and youth aging out of care.
- But these are many of the same youth, and they need services that are focused on the individual person, not the box they check.
- The bill provides a cost-neutral restructuring of multiple youth-serving appropriations to allow for a more flexible, coordinated, youth and community-driven approach to service provision.



Higher Education Supports

- Youth in higher education settings who have previously been in out-of-home care often need additional supports to be successful.
- We have models of programs in the state and around the county that do just that.
- The bill provides \$500,000 to University of Wisconsin System campuses to provide support services to youth who have been in out-of-home care.



What's Next?

- We will
 - Continue to dive into the details
 - Collect questions and communicate with stakeholders
 - Develop an easy-to-read guide to these budget items
- What can you do?
 - If you like what you see, make your voice be heard
 - Write a letter supporting both the child welfare and youth justice components of the Governors budget
 - Send letters to your legislators
 - Send letters via email to the joint finance chairs
- Questions – email wendy.henderson@wisconsin.gov subject: Budget Question

