

Omnissa Horizon Client Installation Instructions for Windows

These are the steps to download and install the Omnissa Horizon Client to enable remote connection to your DCF Virtual Desktop Infrastructure (VDI). Your computer needs to be running Windows 10 or 11 and have rights to install software. **NOTE:** A restart is needed once installation is complete, so save anything you need to and close other applications now to avoid losing work.

- 1) Click this link:

<https://dcfvgdi.wisconsin.gov>

or copy and paste it into your favorite browser (example pictures show Google Chrome).

- 2) On the web page that comes up, click on **Horizon Client for Windows**.

You must use Horizon Client for Windows to access this Server.

Horizon Client for Windows may already be installed.

To connect, start the Horizon Client and enter the server address.

If the Client is not installed, you may download it from the link below.

Contact your local Administrator if you have any questions.

[Horizon Client for Windows](#)

- 3) Click on **View Download Components** to the right of Omnissa Horizon Clients.

Omnissa Workspace ONE	View Download Components Drivers & Tools
Omnissa Workspace ONE Tunnel	View Download Components Drivers & Tools
Omnissa Horizon Clients	View Download Components Drivers & Tools
Omnissa Access	View Download Components Drivers & Tools
Omnissa Secure Email Gateway	View Download Components Drivers & Tools

- 4) Click **GO TO DOWNLOADS**.

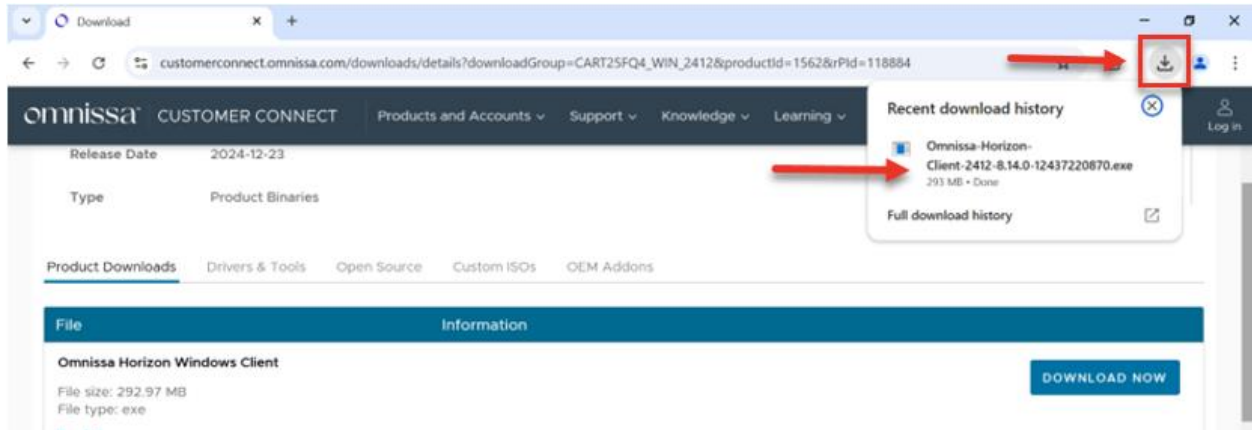
▼ Omnissa Horizon Client for Windows		
Omnissa Horizon Client for Windows	2024-12-23	GO TO DOWNLOADS

- 5) Click **DOWNLOAD NOW**.

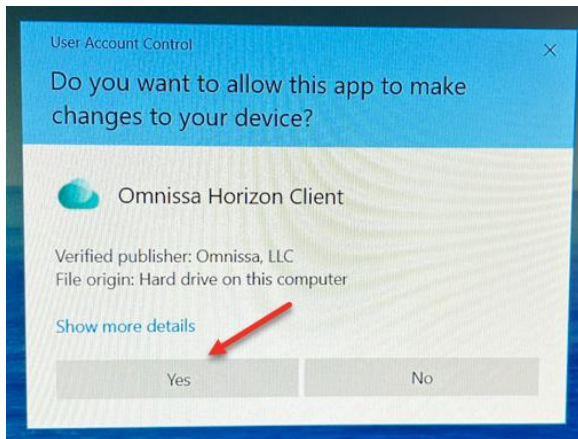
File	Information
Omnissa Horizon Windows Client	
File size: 292.97 MB File type: exe	Read More
	DOWNLOAD NOW

Omnissa Horizon Client Installation Instructions for Windows

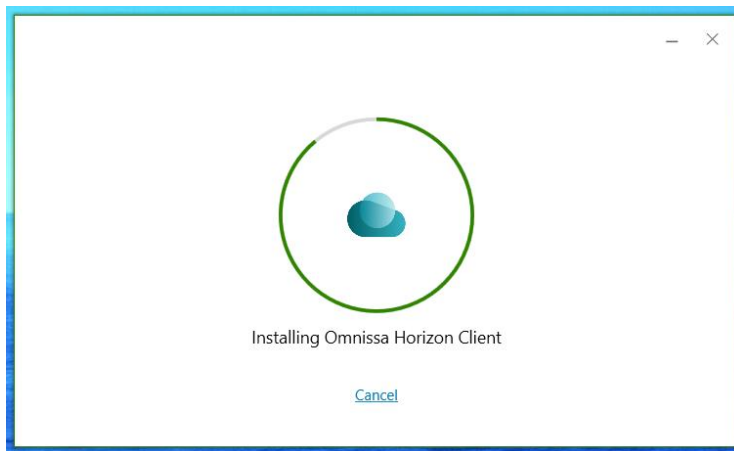
- 6) Click on the **downloaded installer file** (name will vary) to start the installation.
- a. In Google Chrome, click the **down arrow**, then click the **file name**.



- 7) Click **Yes** to begin the installation.

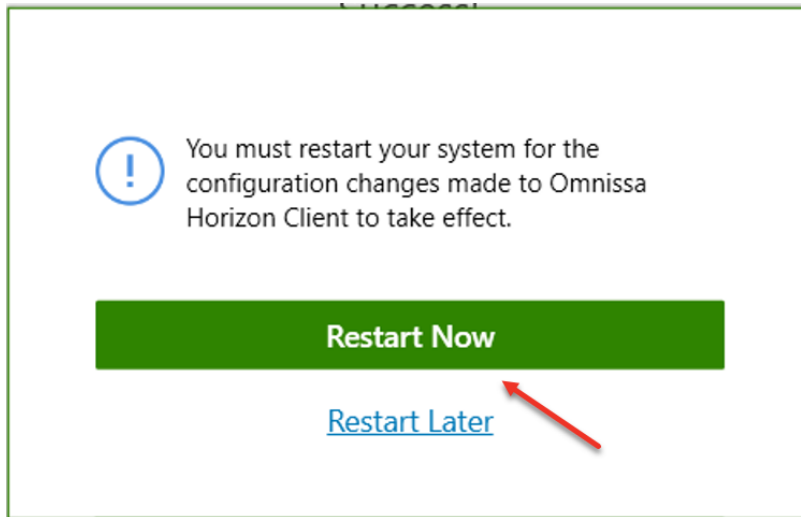


- 8) You will see this while it installs.

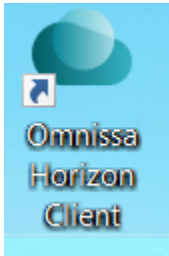


Omnissa Horizon Client Installation Instructions for Windows

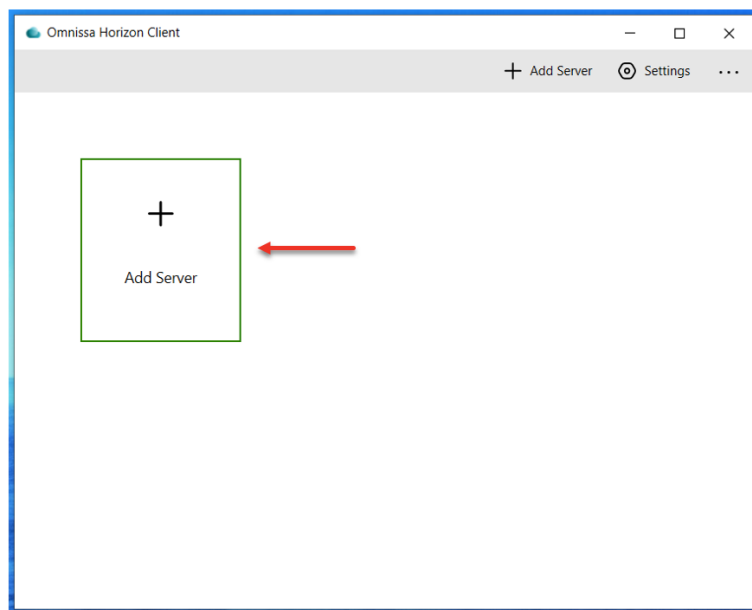
9) Once installation is complete, you need to restart. Click **Restart Now**.



10) Once your computer has restarted, you will see a shortcut on the Desktop and in the Start Menu. Double-click **Omnissa Horizon Client** to launch it.

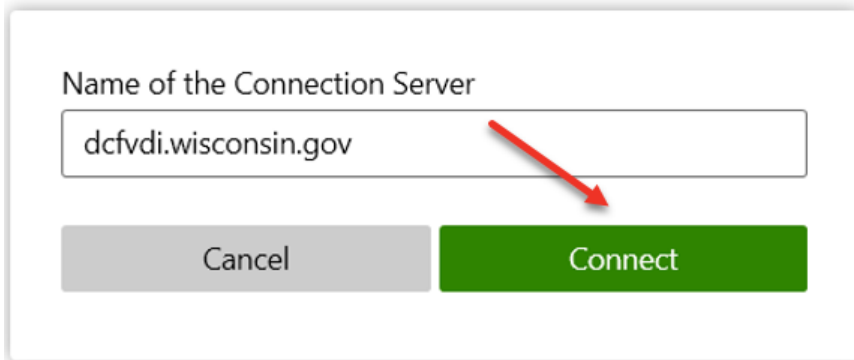


11) Click **Add Server**.



Omniessa Horizon Client Installation Instructions for Windows

- 12) In the *Enter the name of the Connection Server* field, enter the following server name:
dcfvdi.wisconsin.gov
Click **Connect**.

A screenshot of a dialog box titled "Name of the Connection Server". It features a text input field containing "dcfvdi.wisconsin.gov". A red arrow points from the text to the "Connect" button. Below the input field are two buttons: "Cancel" (grey) and "Connect" (green).

- 13) You will then be prompted to enter your credentials. Please follow the instructions for **Using Two-Factor Authentication** to continue logging in.

- 14) You will see the following Geolocation message. Click **Allow**.

