

# CCWIS Feasibility Study

## Evaluating eWISACWIS for CCWIS Rule Compliance



WISCONSIN DEPARTMENT OF  
CHILDREN AND FAMILIES

WI-DCF  
February – December  
2017



# CCWIS Rule History

Department of Health and Human Services,  
Administration for Children and Families

- **Original Rule - 1993**
  - SACWIS/TACWIS regulations
  - Electronic information management
  - Federal reporting requirements
  - Title IV-E payments tied to reporting
- **Revised Rule –2016**
  - Expanded data requirements
  - Application development standards
  - Matching federal funds
  - July 2018 deadline to announce intentions
  - Title IV-E payments tied to compliance



# CCWIS Rule Guidelines

- **Data Exchange**
  - State/Federal agencies
  - Courts
  - Education
  - ICPC information sharing
- **Reusability/Portability**
  - State agencies must own application & data
  - Reuse of existing assets where applicable
  - Applications can be shared with other states
- **Modularity**
  - Greater design flexibility
  - Reduced development costs
  - Staged development
  - Increased partner options
- **Data Quality/Reporting**
  - Enhanced monitoring capabilities
  - Increased automation
  - National data potential
  - Annual reviews



# CCWIS Innovation Opportunities

- **Process Re-design**
  - Start with a operations review
  - Evaluate the technology solutions
  - Identify bottlenecks, stakeholders, data ownership, and technology pain points
- **Data Governance**
  - Business-led function, with IT support
  - Sound and documented data governance model
  - Data exchange standard, policies and data quality and monitoring plan
- **Mobility**
  - Near-term return on investment
  - Improved flexibility
  - Business process improvement
  - Supports practice trends
- **Self-Service**
  - Client portal
  - Appointment reminders
  - Document submission

# CCWIS Data Exchange Opportunities

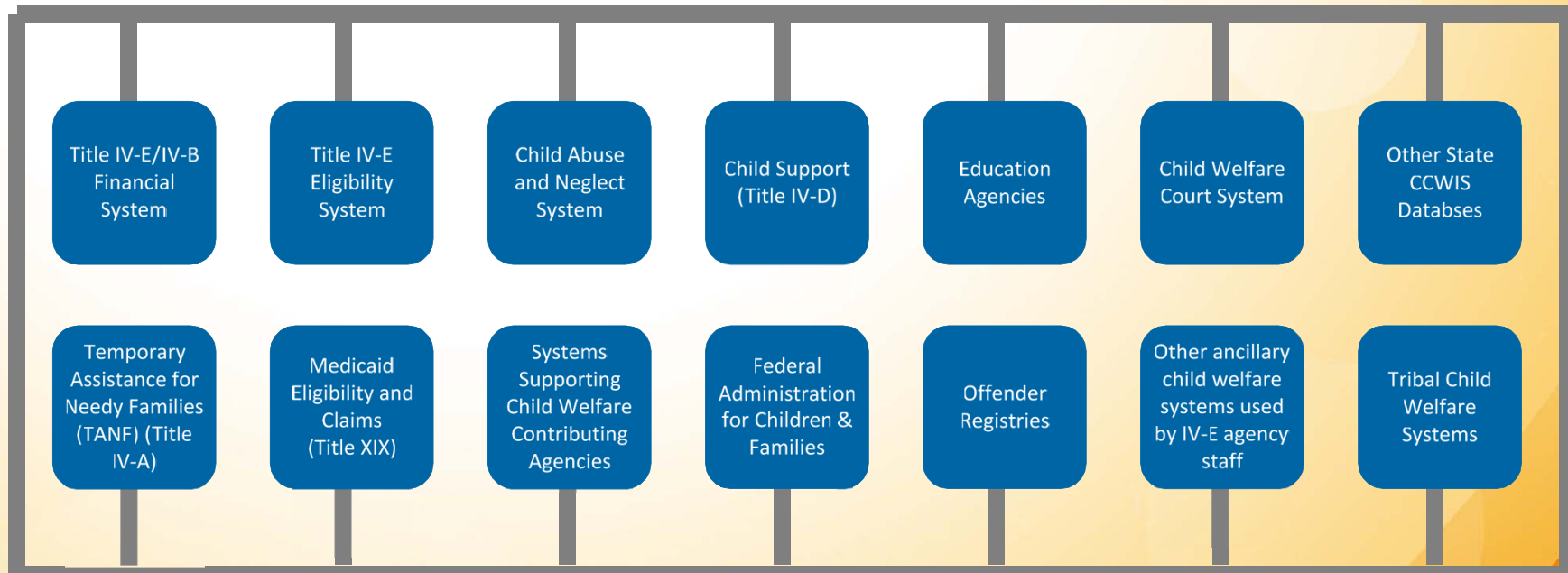
Smarter and Faster

## Will Provide

- Better insights
- Automated communication
- Bi-directional sharing
- Less duplication of effort

## Will Require

- Inter-agency cooperation
- Trusted relationships
- Cooperative data standards
- Application redesign



**\*Potential exchanges, dependent upon further study and validation**



# CCWIS Feasibility Study

WI-DCF began a consulting engagement in February 2017 that will provide an in depth assessment of the current eWiSACWIS system compared to the federal requirements for CCWIS compliance. This analysis will conclude in December of 2017, and prepare WI-DCF for a proposal evaluation process in 2018 that will result in a system roadmap, and a choice of development partner(s), and adjusted support timeline for the current eWiSACWIS system

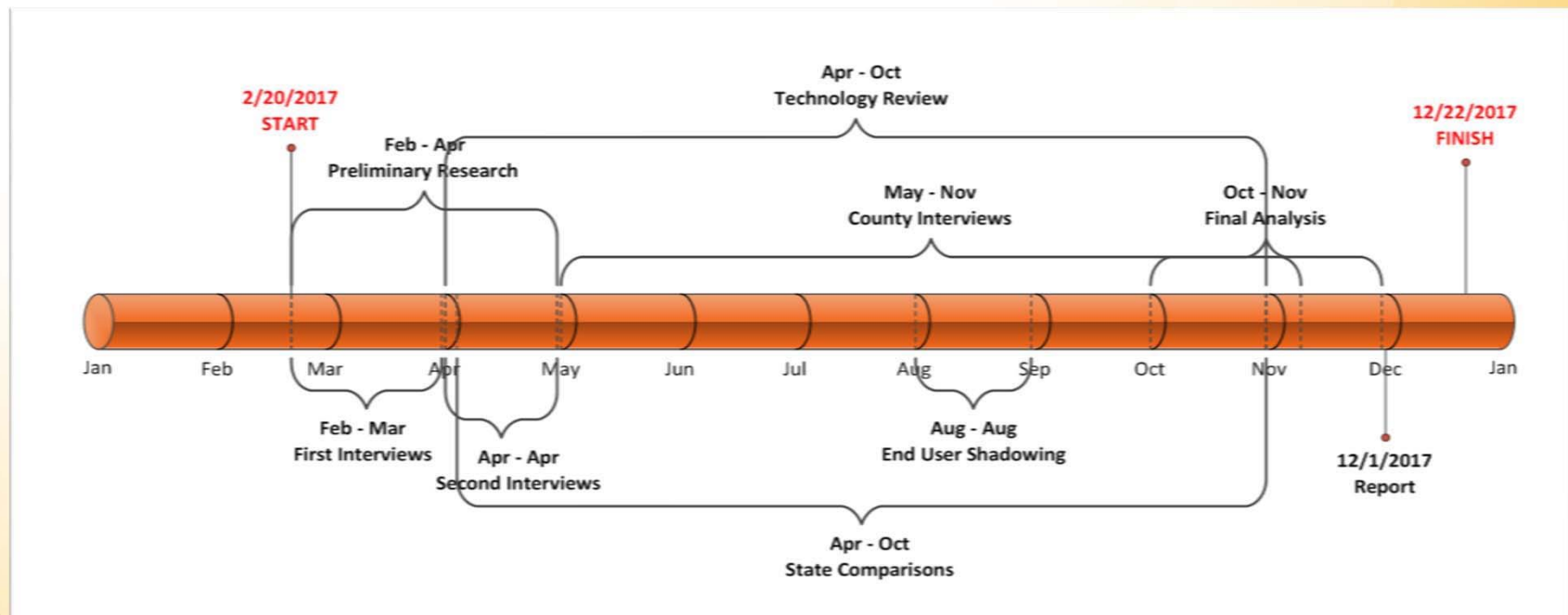
## Study Activities:

- Wisconsin interviews with DCF/DSP staff, cross section of system users, tribal child welfare directors
- Shadowing system users in Iowa and Grant counties
- Hosting discussion groups at regional WCHSA meetings
- CCWIS rule research through ACF documentation and webinars
- Documenting an internal eWiSACWIS technology review
- Conducting a financial impact analysis
- Hosting collaborative CCWIS conversations with other states



# CCWIS Feasibility Study Process and Timeline

- DCF interviews from February through May
- County interviews May through November
- eWiSACWIS user shadowing in August
- Compare Wisconsin to other states April through October
- Technology review April through October
- Final recommendation in December



# CCWIS Potential For A Better Path Forward



**Reorient the compass** - in some cases, practices have been shaped by the systems and technology that support them



**Place programs in the drivers' seat** - begin with the child welfare practice model before designing a technology solution



**Embrace collaboration** - CCWIS specifically recommends identifying “contributing agencies” to ensure the business model includes these stakeholders in the process and technology discussions



**Avoid overreaching** - solution should allow for achievable, incremental benefits, rather than delaying delivery until the end of the process