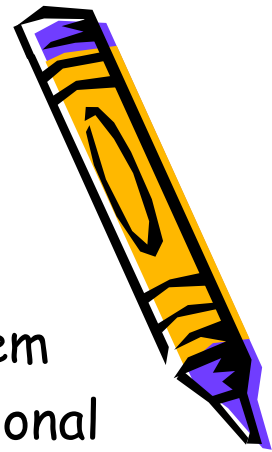


AFCARS

Review
Clean-Up
Lessons Learned



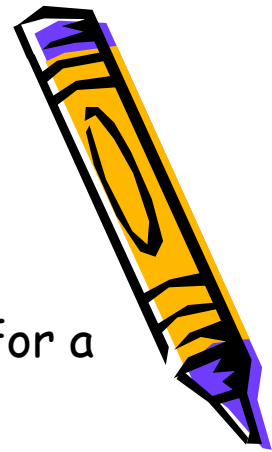
AFCARS



- Adoption and Foster Care Analysis and Reporting System
- Created, in part, due to concerns about the lack of national information available
- Data collected is case level information on all children in foster care for while the State child welfare agency has responsibility for placement, care or supervision and on children who are adopted under the auspices of the State's public child welfare agency
- Data required is information that would normally be collected during the course of a social worker's assessment, planning and service provision



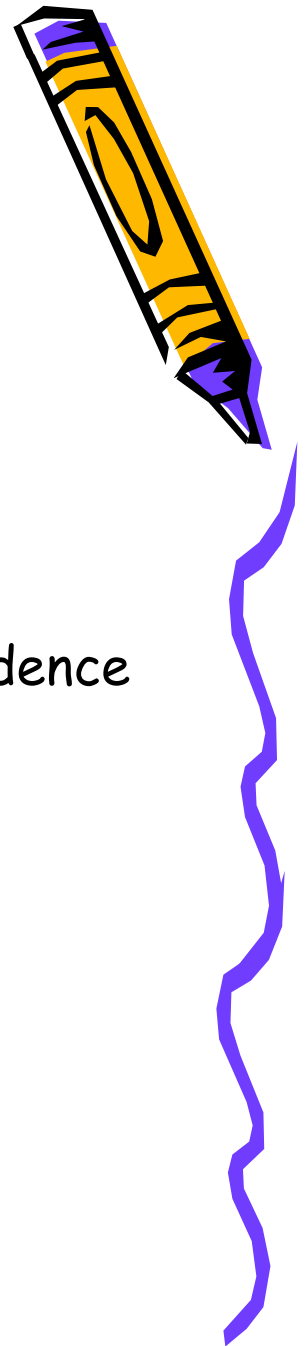
Use of AFCARS



- Administration for Children and Families uses AFCARS data for a number of reasons:
 - Responding to Congressional requests for current data
 - Responding to other Federal departments (General Accounting Office, Office of Management and Budget, Office of Inspector General)
 - Short and long term budget projections
 - Trend analysis
 - Targeting areas for greater or potential technical assistance efforts
 - Determining and assessing outcomes for children and families



Additional Uses



- Adoption Incentives Program
- Child Welfare Outcomes Reports
- Child and Family Services Reviews
- Title IV-E Eligibility Reviews
- Allotment of funds in the Chafee Foster Care Independence Program (CFCIP)

- States are required to submit data semi-annually
 - November (April-September)
 - May (October-March)



AFCARS Review

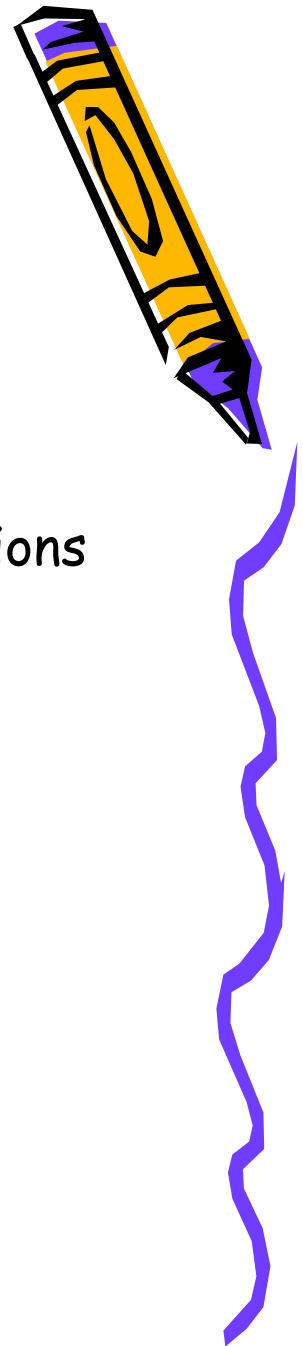


- Review of the Wisconsin AFCARS reporting was conducted the week of July 10, 2006
- Conducted by the Federal Administration for Children and Families
- Examined the collection of placement data submitted in the AFCARS Foster Care file and adoption data submitted in the AFCARS Adoption file to assess compliance with federal reporting requirements and evaluate data quality for program management purposes
- Consisted of reviewing program codes, mapping of AFCARS elements, and file review



Review Findings

- DCFS completed an AFCARS Improvement Plan and submitted to ACF in January 2007
- 2 year limit to make necessary changes and/or corrections to the system
 - Data correction
 - Training
 - eWiSACWIS enhancements
 - AFCARS file coding improvements



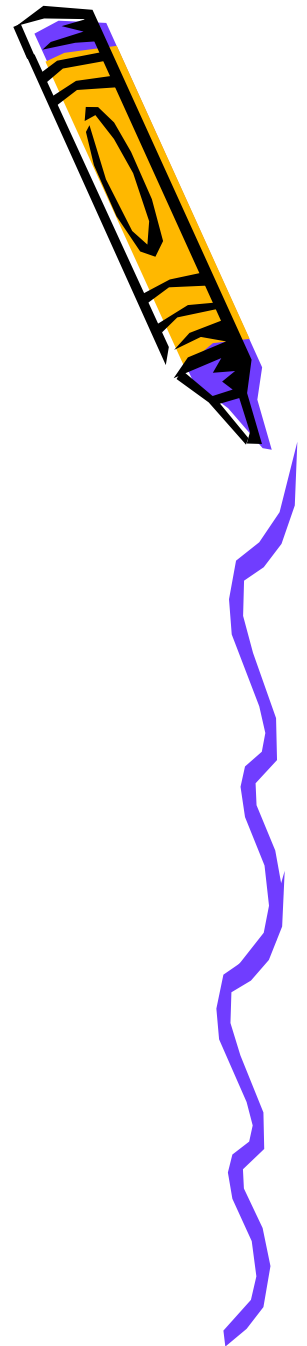
AFCARS Review



- Scoring rated on a scale of 1-4
- Elements rated as a 2 indicate that technical requirements for AFCARS reporting are not fully met
 - Elements rated as a 2 will be addressed through changes to the AFCARS batch file or the screens where data is entered in the eWiSACWIS application
- Elements rated as a 3 indicate that there are data quality issues (data underreported due to inconsistent data entry, data not being entered, etc)
 - Elements rated as a 3 will be addressed through training and technical assistance



Findings

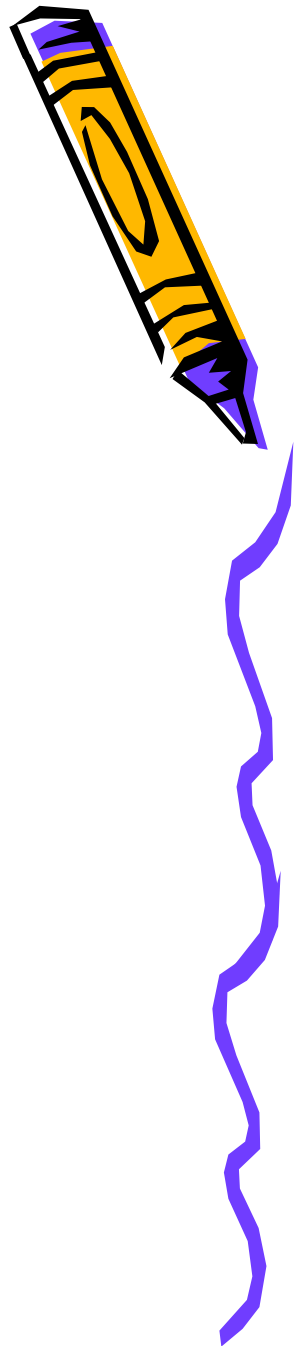


- 15 areas of "General Requirements" reviewed
 - Population that is to be reported in eWiSACWIS
 - Technical requirements for constructing a data file
 - 14/15 received a rating of 4
 - 1 received a rating of 3
 - Conversion issues

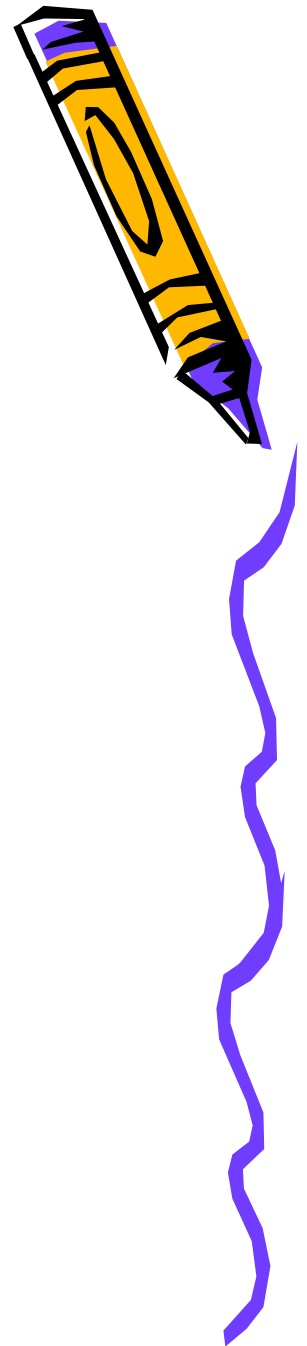


Findings

- 103 Foster Care and Adoption Elements Reviewed
 - 33% received a 4
 - 34% received a 3
 - 33% received a 2
 - NO ELEMENTS RECEIVED A SCORE OF 1



Findings



- Reviewed 75 Foster care files sent in by counties
 - Missing information that occurred prior to counties implementing WiSACWIS
 - Majority of issues related to Elements 18-24
- Reviewed 29 Adoption Cases
 - No major errors



Major Review Findings

Application Changes



- Race (Foster Care and Adoption)
 - State must revise screen to account for all five of the races required in AFCARS
 - Race must be self-reported by the child or his/her parents



Major Review Findings

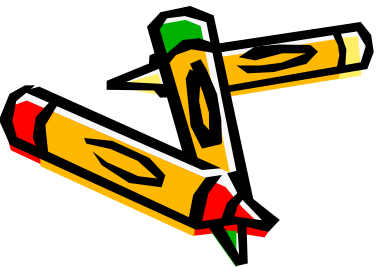
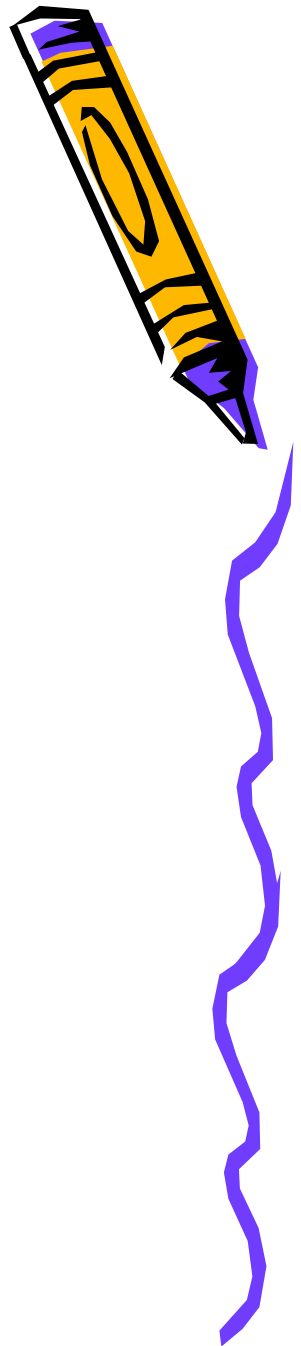
Application Changes Continued

- Disability
 - State tends to under-report children who may have a health/mental health condition
 - Make revisions to the system to reduce duplicative data entry and ensure accurate data entry
 - Align system to ACF Disabilities
 - Part of the changes made to the Medical/Mental Health Profile
 - State will provide additional training

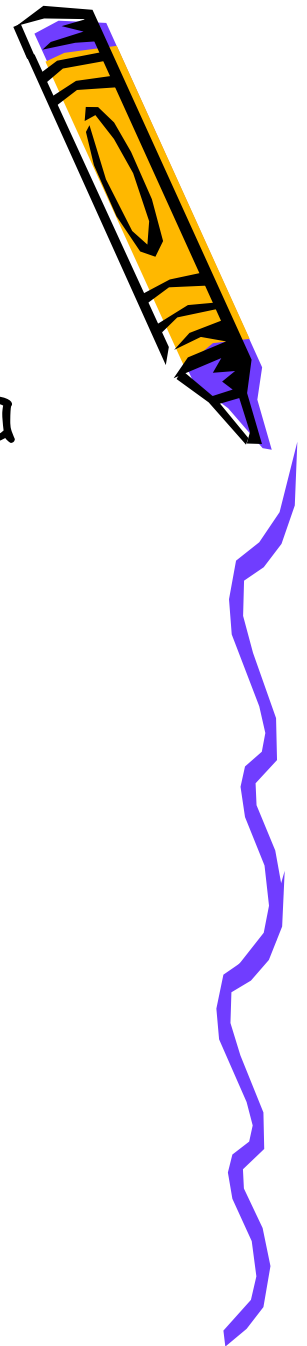


Review Findings

- Foster Care Elements 18-24
 - Ongoing clean up of Placement History
- Foster Care 26-40
 - Under reporting of reasons for removal



AFCARS Review



- Many elements with incorrect data
 - Kids with birthdates in 1950's
 - Parents born in the 1800's
 - Missing Foster Family Structure etc.
 - Edit checks implemented to prevent errors



Clean up efforts



- Placement History Correction
- Ongoing efforts to clean Elements 18-24
 - Many errors associated with conversion
 - If cases are re-opened, the placement history needs to be complete and may need to be updated via the placement history correction window.
 - DCFS and counties identified errors that cannot be corrected (first placement in youth correctional facility etc)

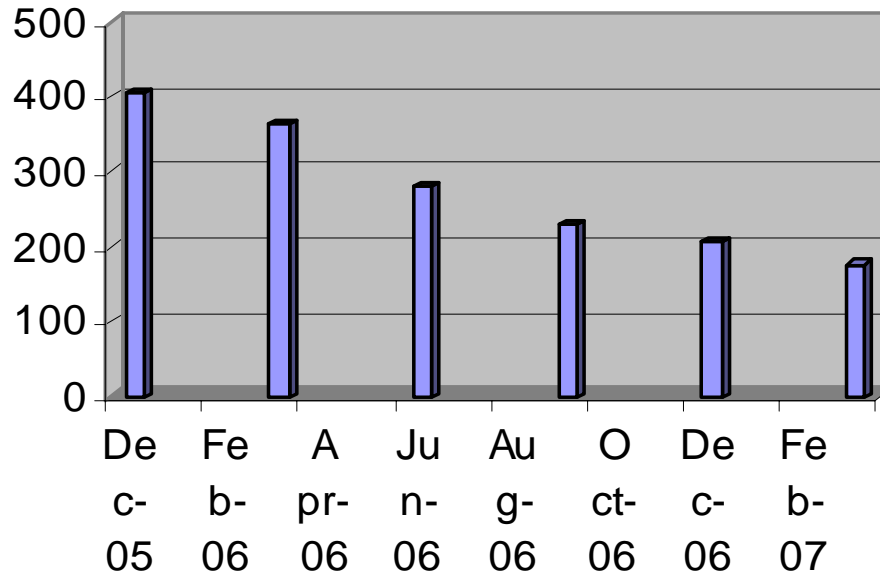


AFCARS Corrections

Date of First Removal from Home



Foster Care Element #18

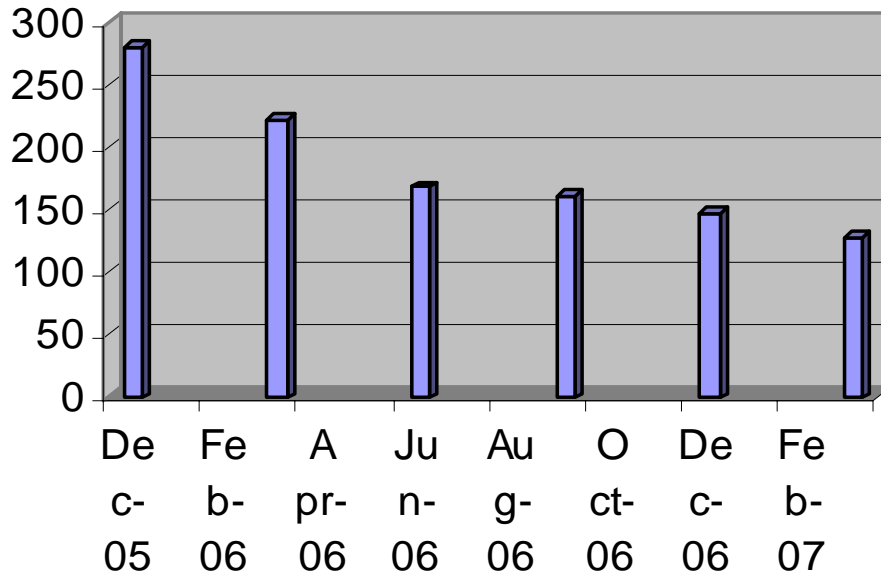


AFCARS Corrections

Total Number Removals from Home



Foster Care Element #19

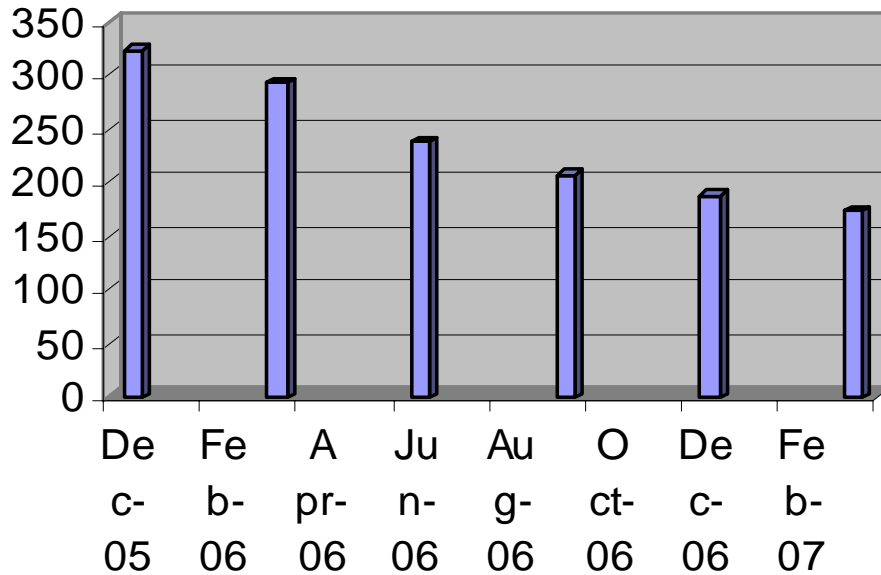


AFCARS Corrections

Date of Latest Removal



Foster Care Element #21

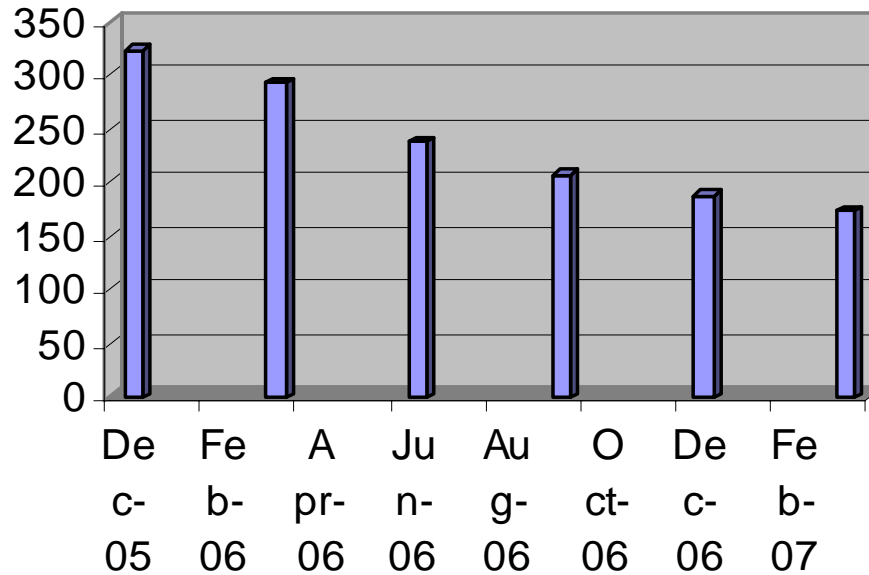


AFCARS Corrections

Date of Latest Removal Transaction Date



Foster Care Element #22

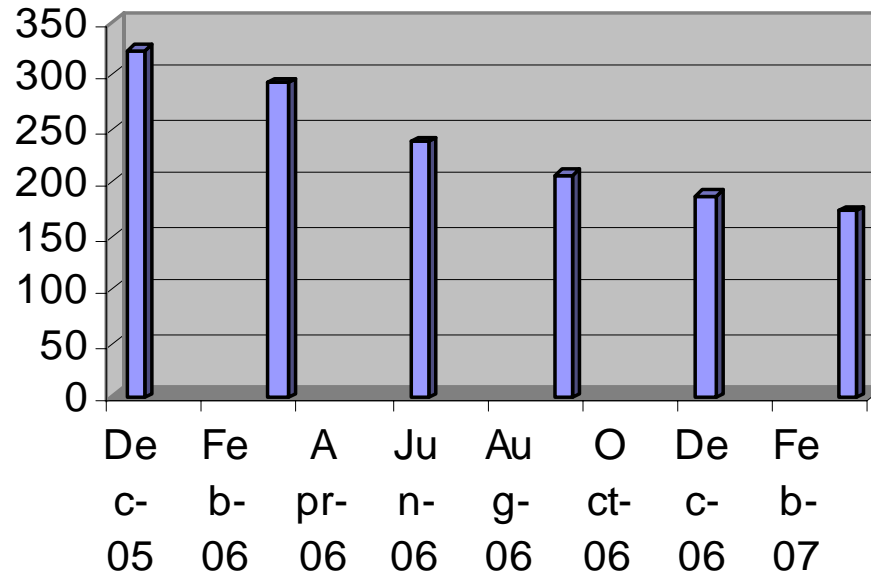


AFCARS Corrections

Number of Previous Placement Settings



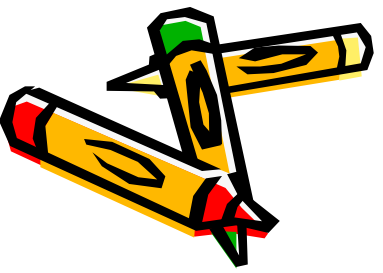
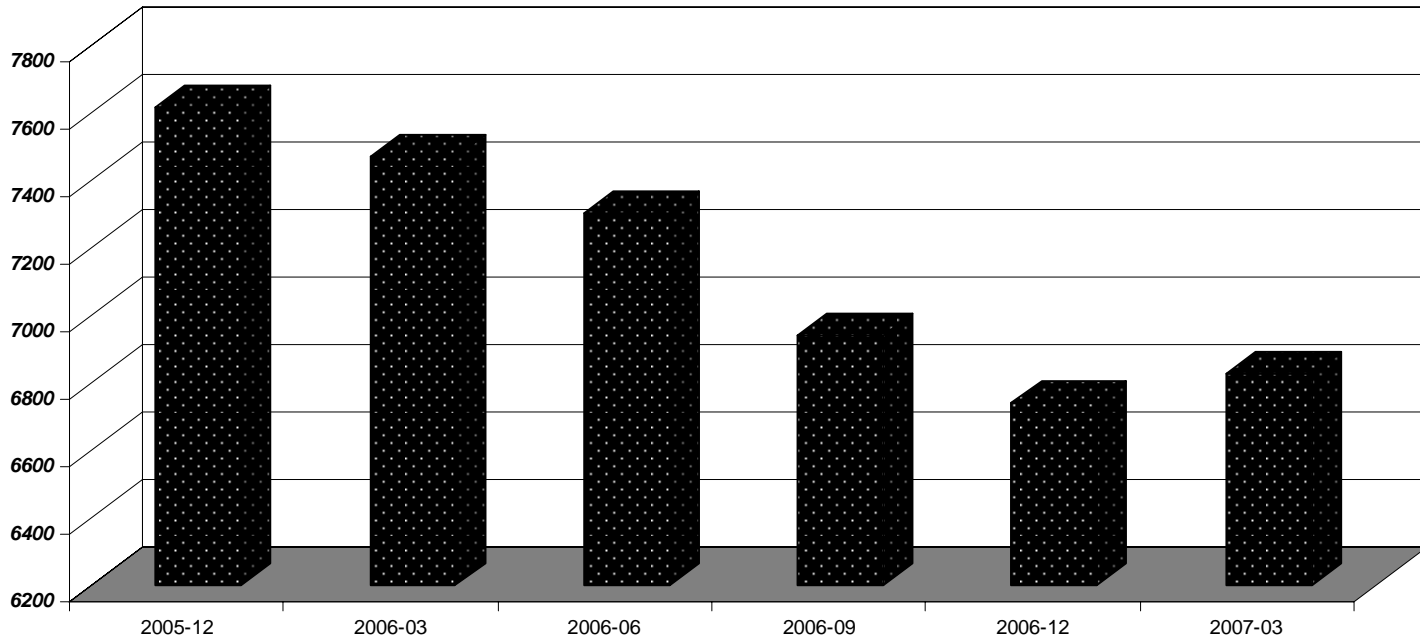
Foster Care Element #24



AFCARS

Total Errors

Counties by Year-Quarter



Additional Clean Up Efforts

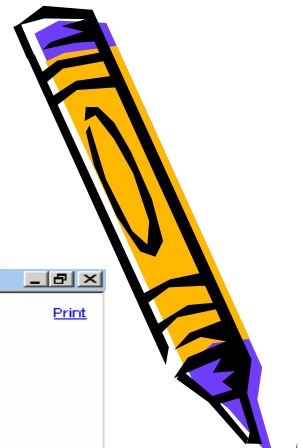
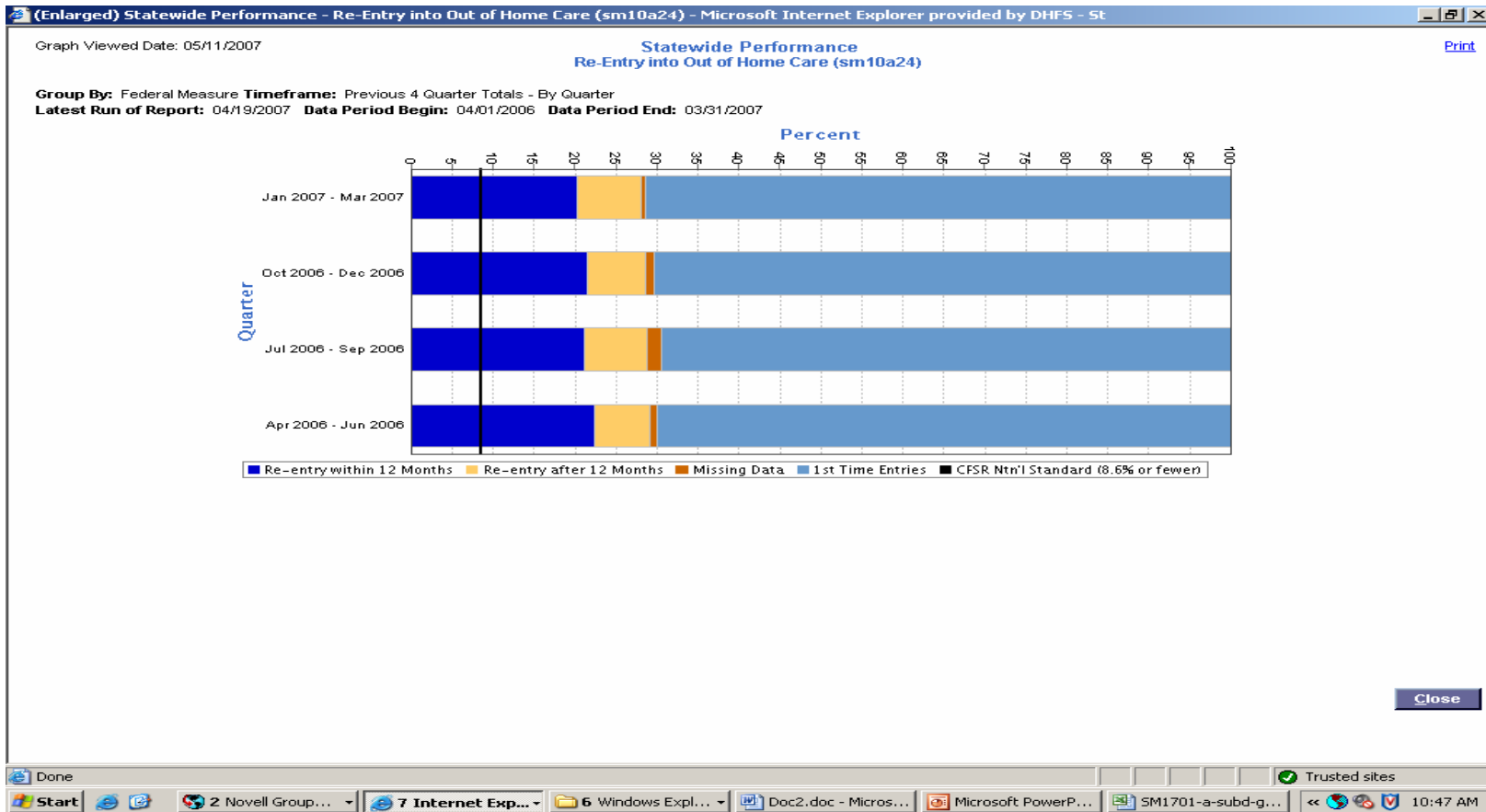


- Re-entry errors

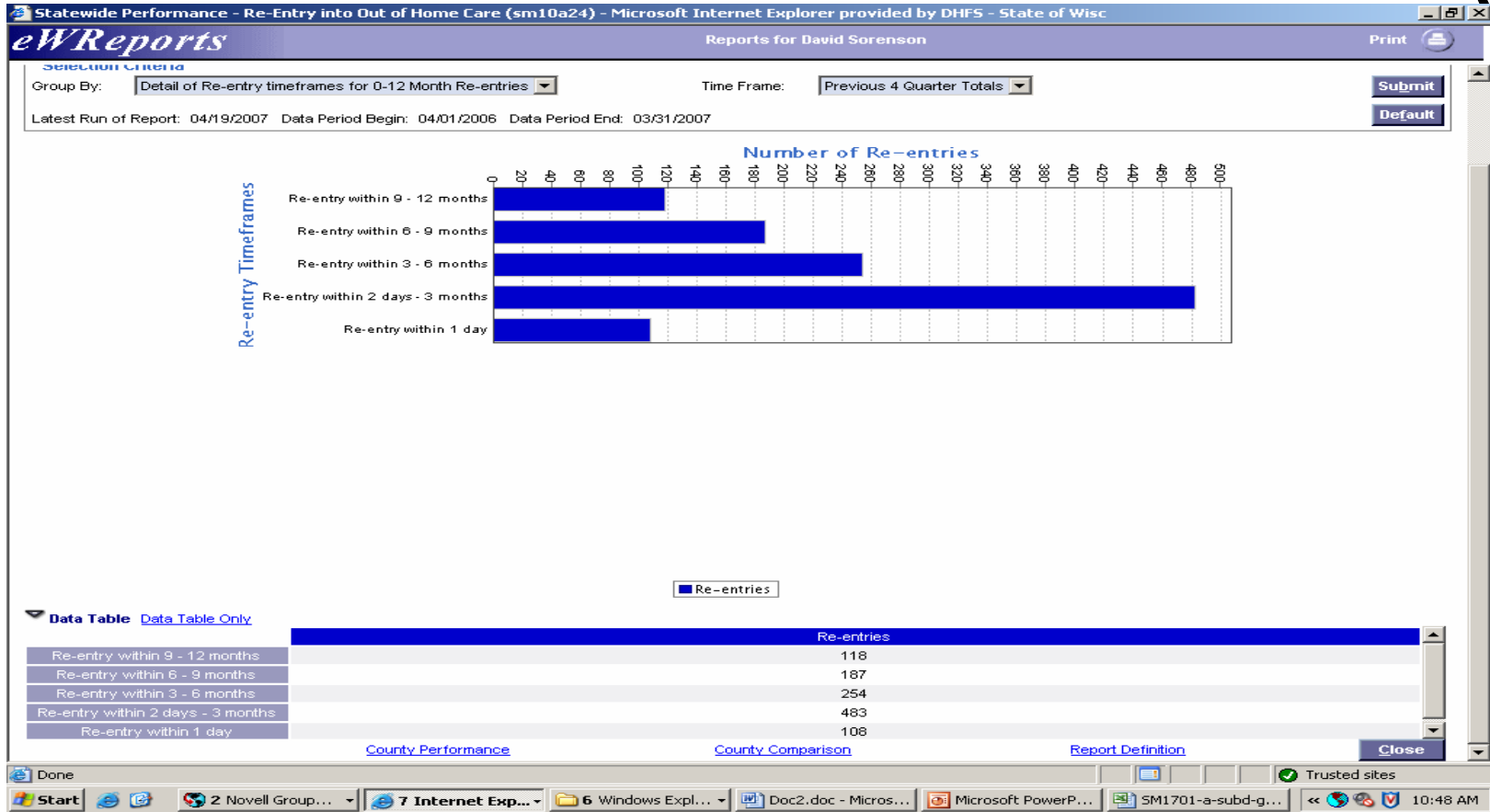
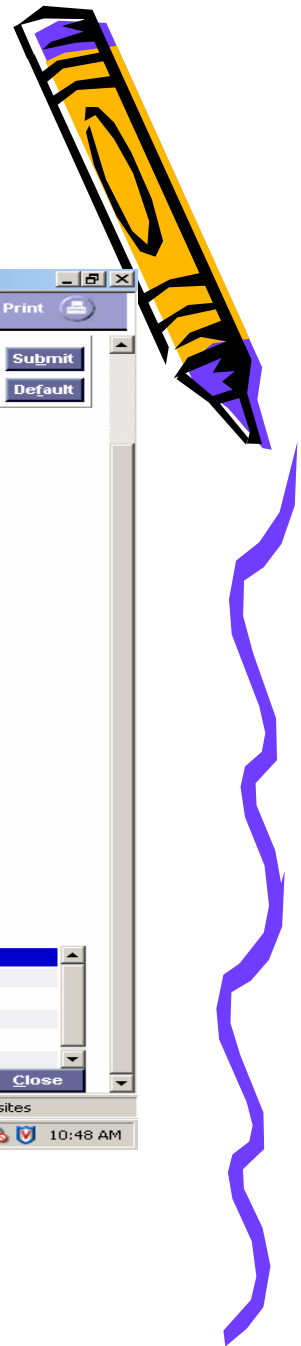
- Re-entry rate needs to meet benchmark set as part of Wisconsin CFSR.
- 20.15% re-entered within 12 months
- Reporting period ended in October 2006
- Year of overlapping data



Re-entry



One Day re-entry to care



Thanks!!!!

- Jenny Weber
eWiSACWIS Project
weberhm@dhfs.state.wi.us

David Sorenson
Office of Program Evaluation and Planning
sorendm@dhfs.state.wi.us

