

The mission of the Wisconsin Department of Children and Families is to promote the economic and social well-being of Wisconsin's children and families.

KidStat

The logo for KidStat features the word "KidStat" in a bold, blue, sans-serif font. A red line graph with circular markers is overlaid on the text, starting at the bottom left of the 'K', rising to a peak above the 'i', dipping below the 'd', rising again to a peak above the 'S', dipping below the 't', and finally rising to its highest point above the 't' at the end of the word.

Division of Family and Economic Security

September 22, 2009

Protecting Children. Strengthening Families. Building Communities.





Wisconsin Department of Children and Families Values

Wisconsin Department of Children and Families will:

- **Make decisions and act based on the best interests of children and their families because Wisconsin's future is dependent upon their success today.**
- **Partner with the people of Wisconsin to keep children safe, promote economic stability and ensure the success of children and families, because it is our shared responsibility.**
- **Share information, seek input and explain our actions, because we value transparency and accountability.**
- **Treat everyone with dignity and respect, because we believe in everyone's inherent value.**
- **Manage our resources efficiently, because we value good stewardship.**
- **Support, develop and hold accountable our employees and contractors, because their performance is vital to our success.**
- **Keep learning about and applying what works, because we want to continually improve what we do.**

Protecting Children. Strengthening Families. Building Communities.





Family and Economic Security

What is the size of the W-2 caseload?

Wisconsin Works (W-2)					
Month	Wisconsin			Milwaukee County	Balance of State
	Paid Placements	Unpaid Placements	Total	Paid Placements	Paid Placements
August 2009	8,179	2,347	10,526	5,640	2,539
July 2009	8,026	2,289	10,315	5,513	2,513
June 2009	7,770	2,355	10,125	5,377	2,393
August 2008	6,250	2,725	8,975	4,375	1,875



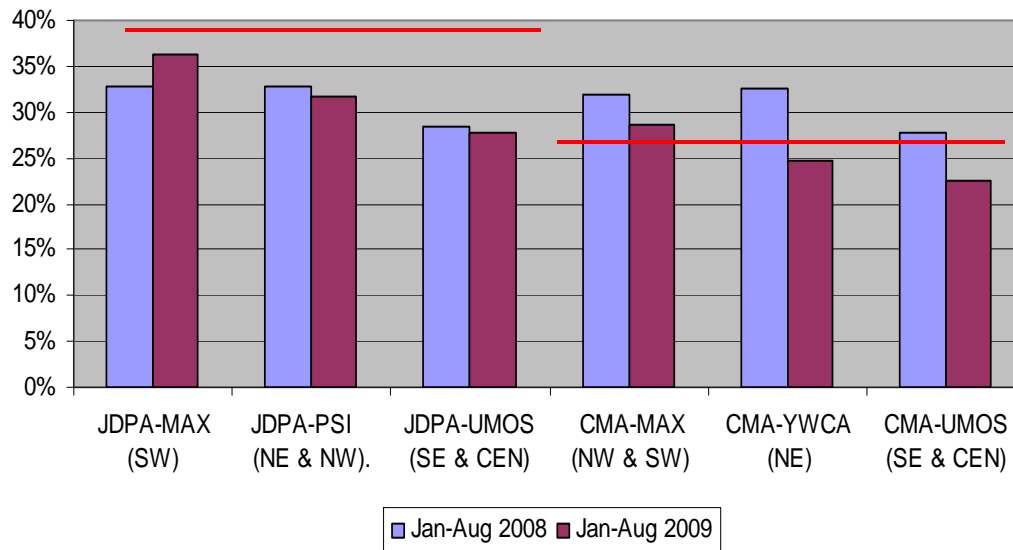
Family and Economic Security

Target Direction: 

Families increase income.

How many W-2 participants from Milwaukee County obtain employment?

Percentage of MKE W-2 Participants Obtaining Employment
(2008 YTD and 2009 YTD)



In Milwaukee County, 1 of 6 eligible agencies are meeting the standard in 2009 compared to 3 of 6 in 2008

Analysis

- The annual DCF standard is minimum of
 - 35% for Milwaukee CMAs
 - 55% for Milwaukee JDPAs
- The red lines in the bar chart reflect the YTD pro-rated standard.
- Year to Date 2008 (Jan - Aug)
 - 3 of 3 MKE CMAs met the pro-rated standard
 - 0 of 3 MKE JDPAs met the pro-rated standard
- Year to Date 2009 (Jan - Aug)
 - 1 of 3 MKE CMAs met the pro-rated standard
 - 0 of 3 MKE JDPAs met the pro-rated standard
- In Milwaukee County, 25% (2,343 of 9,239) of W-2 participants obtained employment from January to August 2009

This measure does not apply to the MKE SSIA Agency.



Family and Economic Security

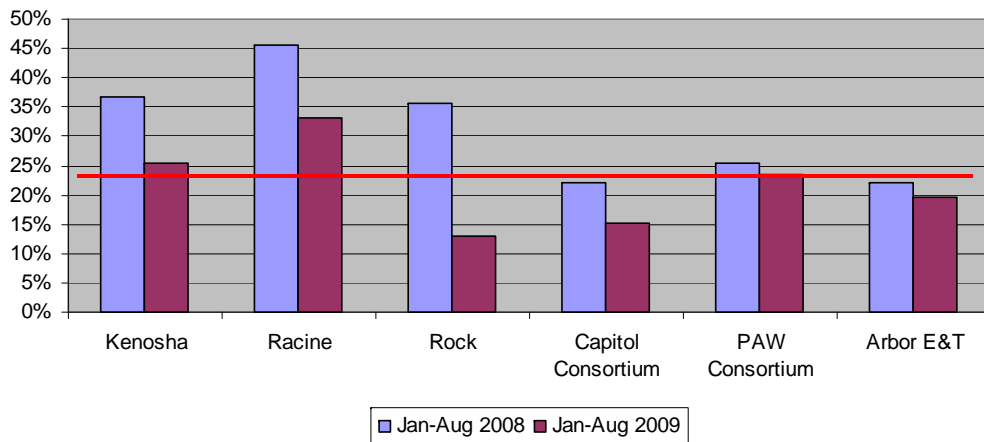
Target Direction: 

Families increase income.

How many W-2 participants from Balance of State obtain employment?

Analysis

Percentage of BOS W-2 Participants Obtaining Employment
(2008 YTD and 2009 YTD)



In the large BOS agencies, 3 of 6 eligible agencies are meeting the standard in 2009 compared to 4 of 6 in 2008

- The annual DCF standard is minimum of 35% for Balance of State agencies
- The red lines in the bar chart reflect the YTD pro-rated standard.
- Year to Date 2008 (Jan - Aug)
 - 67% (4 of 6) of large BOS agencies met the pro-rated standard
 - 62% (21 of 34) of other eligible BOS agencies met the pro-rated standard
 - 63% (25 of 40) of all eligible BOS agencies met the pro-rated standard
- Year to Date 2009 (Jan - Aug)
 - 50% (3 of 6) of large BOS agencies met the pro-rated standard
 - 37% (13 of 35) of other eligible BOS agencies met the pro-rated standard
 - 39% (16 of 41) of all eligible BOS agencies met the pro-rated standard
- In Balance of State, 22% (812 of 3,763) of W-2 participants obtained employment from January to August 2009

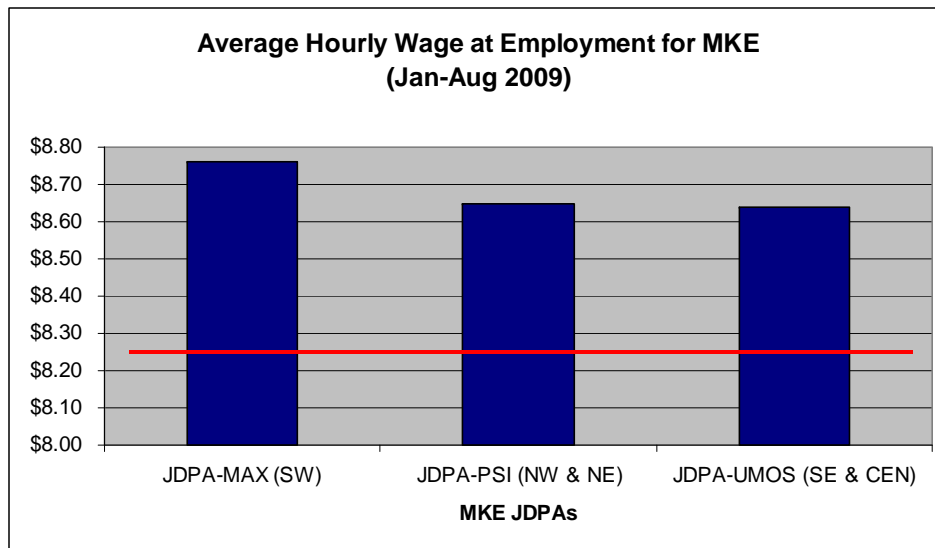


Family and Economic Security

Target Direction: 

Families increase income.

What is the average hourly wage at employment for W-2 participants from Milwaukee County?



Analysis

- DCF standard for minimum average hourly wage is \$8.24 for Milwaukee JDPAs
- Year to Date (Jan - Aug)
 - 3 of 3 MKE JDPAs met standard

This measure does not apply to the MKE SSIA and CMA Agencies.

In Milwaukee County, 3 of 3 eligible agencies are meeting the standard

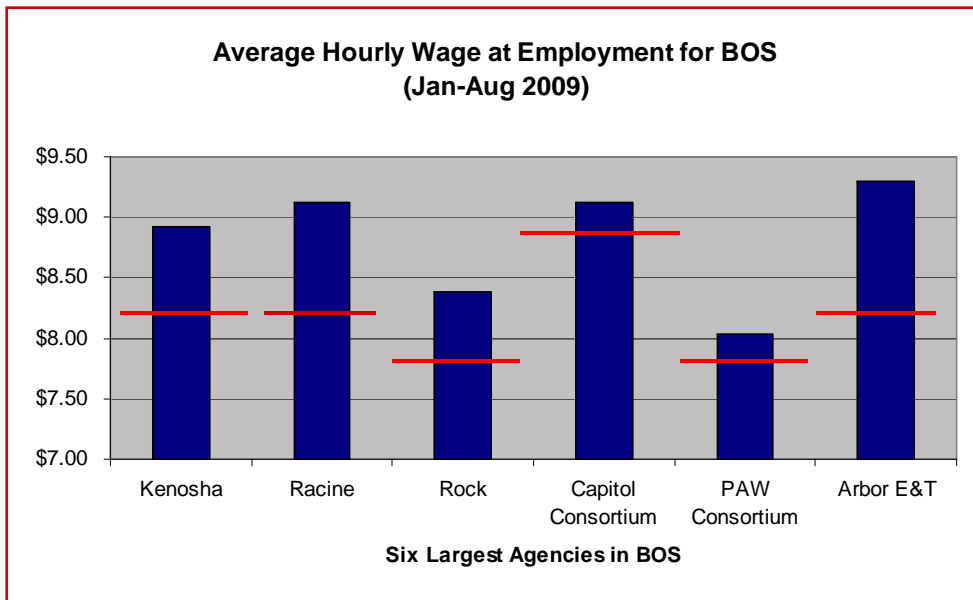


Family and Economic Security

Target Direction: 

Families increase income.

What is the average hourly wage at employment for W-2 participants from Balance of State?



Analysis

- DCF standard for minimum average hourly wage varies by geographic area
 - Hourly standard in BOS ranges from \$6.50 to \$9.66
- Year to Date (Jan - Aug)
 - 100% (6 of 6) of large BOS agencies met standard
 - 86% (25 of 29) of other eligible BOS agencies met standard
 - 89% (31 of 35) of all eligible BOS agencies met standard

In the large BOS agencies, 6 of 6 eligible agencies are meeting their respective wage standard



Family and Economic Security

Target Direction:



Families increase income.

What is the wage distribution at employment for W-2 participants in Wisconsin?

Percentile	Hourly Wage (Jan – Aug 2009)
10	\$6.75
20	\$7.15
30	\$7.50
40	\$7.75
50	\$8.00
60	\$8.50
70	\$9.00
80	\$10.00
90	\$11.00

Analysis

Of the W-2 participants employed from Jan to Aug 2009

- 10% earn less than or equal to \$6.75 per hour
- 30% earn less than or equal to \$7.50 per hour
- 50% earn less than or equal to \$8.00 per hour
- 70% earn less than or equal to \$9.00 per hour
- 90% earn less than or equal to \$11.00 per hour

In Wisconsin, the median wage (50th percentile) is \$8.00 per hour



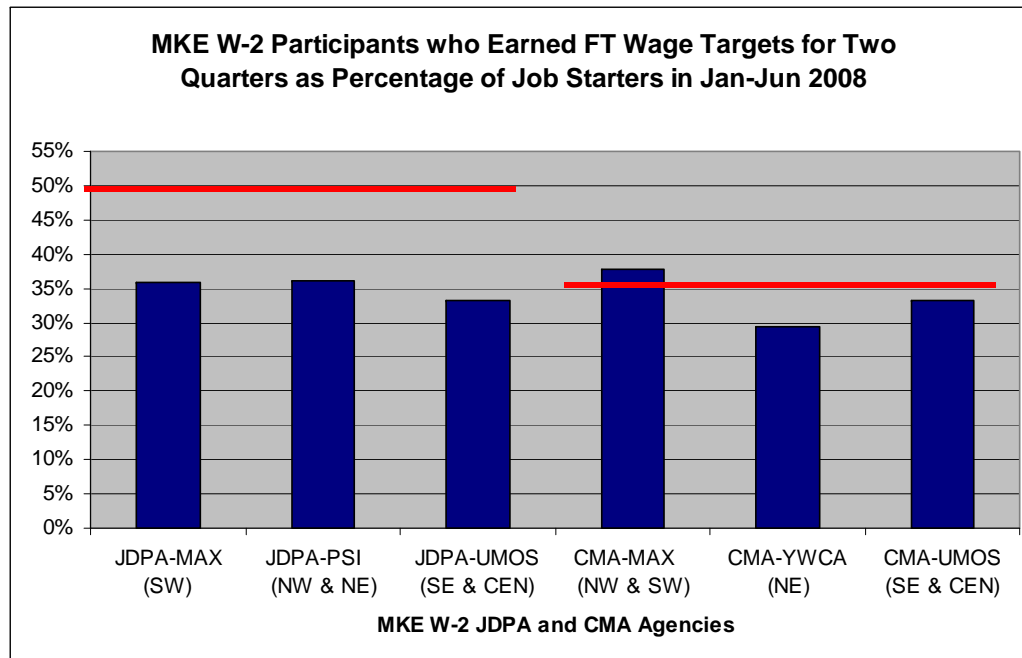
Family and Economic Security

Target Direction:



Families increase income.

How many full-time employed W-2 participants from Milwaukee County met the retention/stabilization standard for two quarters after start of job?



In Milwaukee County, 1 of 6 eligible agencies is meeting the standard

Analysis

- DCF full-time standard is minimum earnings of \$6,760 in next two quarters after start of FT job for minimum of
 - 50% of FT job starters in JDPA
 - 35% of FT job starters in CMA
- YTD standard for 2009 uses 2008 data due to two quarter lag in receiving UI earnings data
 - Job started in Qtr 1 of 2008, earnings in Qtr 2 & 3 of 2008, and UI data received in Qtr 2 (May) of 2009
 - Job started in Qtr 2 of 2008, earnings in Qtr 3 & 4 of 2008, and UI data received in Qtr 3 (Aug) of 2009
- For a given region, both the CMA and JDPA achieve the same rate on this measure (UMOS)
- 2009 YTD (for jobs started in Jan-Jun 2008)
 - 0 of 3 MKE JDPAs met the standard
 - 1 of 3 MKE CMAs met the standard



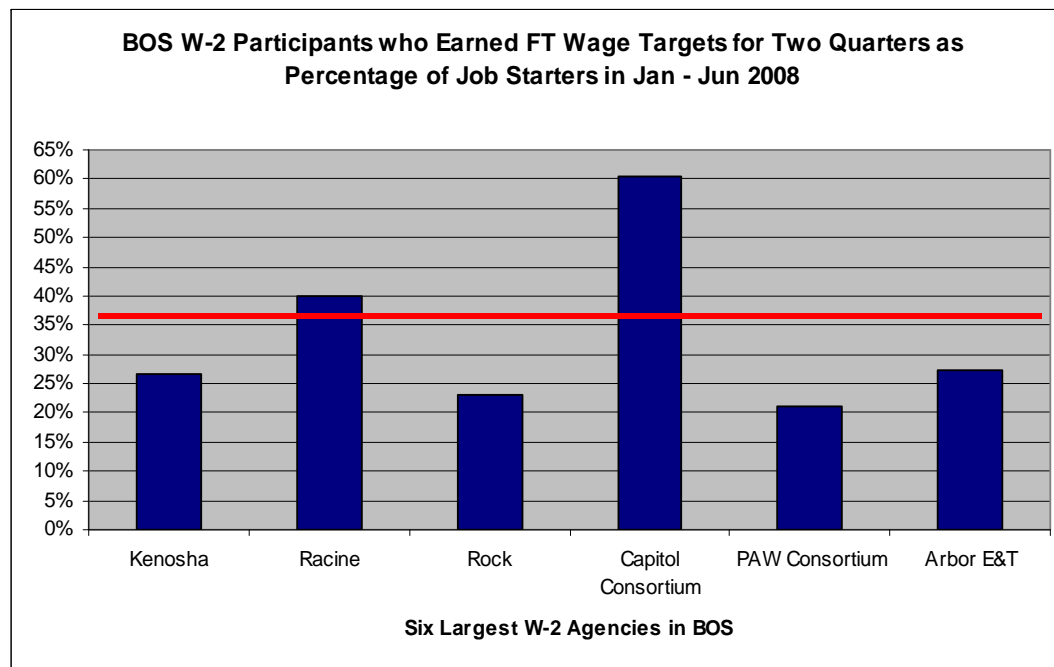
Family and Economic Security

Target Direction:



Families increase income.

How many full-time employed W-2 participants from Balance of State met the retention/stabilization standard for two quarters after start of job?



In the large BOS agencies, 2 of 6 eligible agencies are meeting the standard

Analysis

- DCF full-time standard is minimum earnings of \$6,760 in next two quarters after start of FT job for minimum of 35% of FT job starters in BOS agency
- Standard for 2009 uses 2008 data due to two quarter lag in receiving UI earnings data
 - Job started in Qtr 1 of 2008, earnings in Qtr 2 & 3 of 2008, and UI data received in Qtr 2 (May) of 2009
 - Job started in Qtr 2 of 2008, earnings in Qtr 3 & 4 of 2008, and UI data received in Qtr 3 (Aug) of 2009
- 2009 YTD (for jobs started in Jan-Jun 2008)
 - 33% (2 of 6) of large BOS agencies met the standard
 - 63% (15 of 24) of other eligible BOS agencies met the standard
 - 58% (17 of 30) of total eligible BOS agencies met the standard



Family and Economic Security

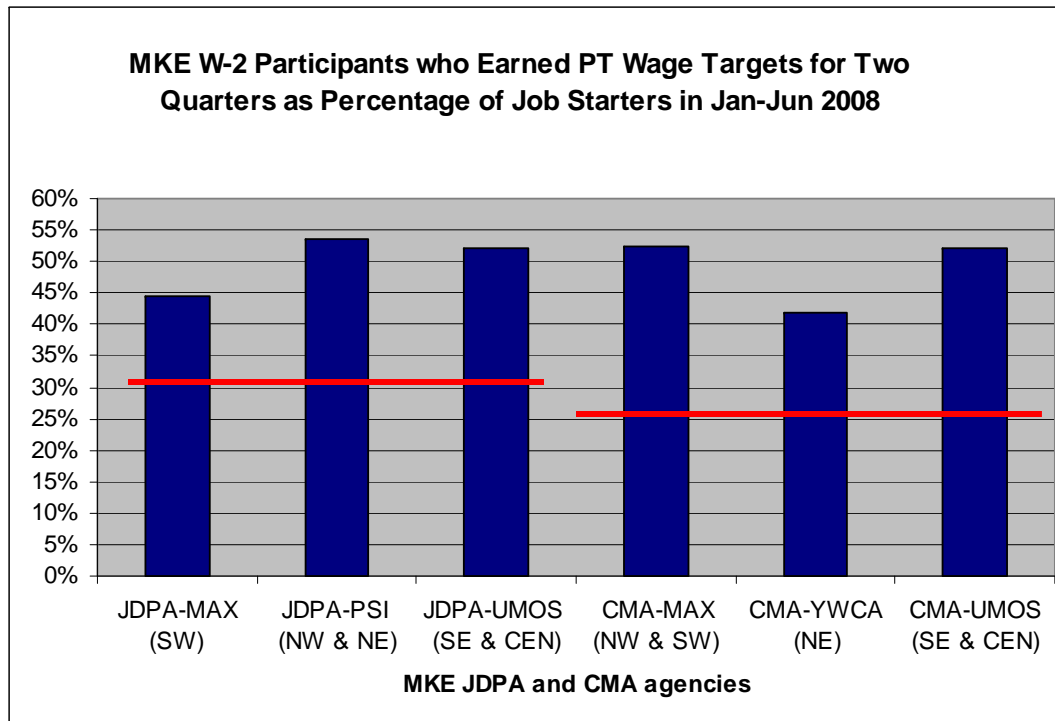
Target Direction:



Families increase income.

How many part-time employed W-2 participants from Milwaukee County met the retention/stabilization standard for two quarters after start of job?

Analysis



In Milwaukee County, 6 of 6 eligible agencies are meeting the standard

- DCF part-time standard is minimum earnings of \$3,380 in next two quarters after start of PT job for minimum of
 - 30% of PT job starters in JDPA
 - 25% of PT job starters in CMA
- Standard for 2009 uses 2008 data due to two quarter lag in receiving UI earnings data
 - Job started in Qtr 1 of 2008, earnings in Qtr 2 & 3 of 2008, and UI data received in Qtr 2 (May) of 2009
 - Job started in Qtr 2 of 2008, earnings in Qtr 3 & 4 of 2008, and UI data received in Qtr 3 (Aug) of 2009
- For a given region, both the CMA and JDPA achieve the same rate on this measure (UMOS)
- 2009 YTD (for jobs started in Jan-Jun 2008)
 - 3 of 3 MKE CMAs met the standard
 - 3 of 3 MKE JDPAs met the standard



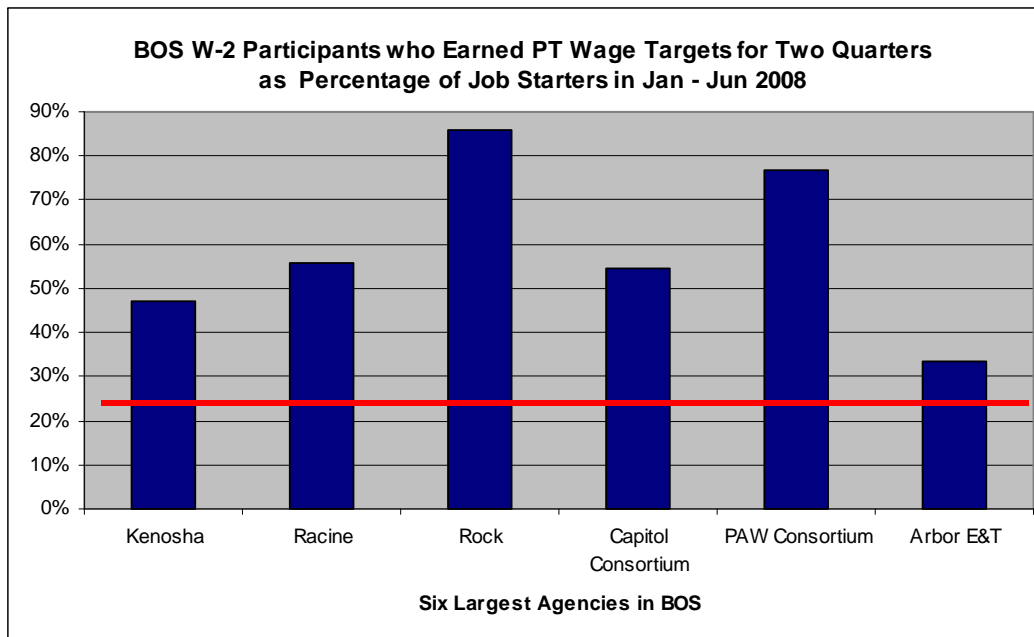
Family and Economic Security

Target Direction:



Families increase income.

How many part-time employed W-2 participants from Balance of State met the retention/stabilization standard for two quarters after start of job?



In the large BOS agencies, 6 of 6 eligible agencies are meeting the standard

Analysis

- DCF part-time standard is minimum earnings of \$3,380 in next two quarters after start of PT job for 25% of PT job starters in BOS agency
- Standard for 2009 uses 2008 data due to two quarter lag in receiving UI earnings data
 - Job started in Qtr 1 of 2008, earnings in Qtr 2 & 3 of 2008, and UI data received in Qtr 2 (May) of 2009
 - Job started in Qtr 2 of 2008, earnings in Qtr 3 & 4 of 2008, and UI data received in Qtr 3 (Aug) of 2009
- 2009 YTD (for jobs started in Jan-Jun 2008)
 - 100% (6 of 6) of large BOS agencies met the standard
 - 74% (17 of 23) of other eligible BOS agencies met the standard
 - 79% (23 of 29) of total eligible BOS agencies met the standard



Family and Economic Security

Target Direction:



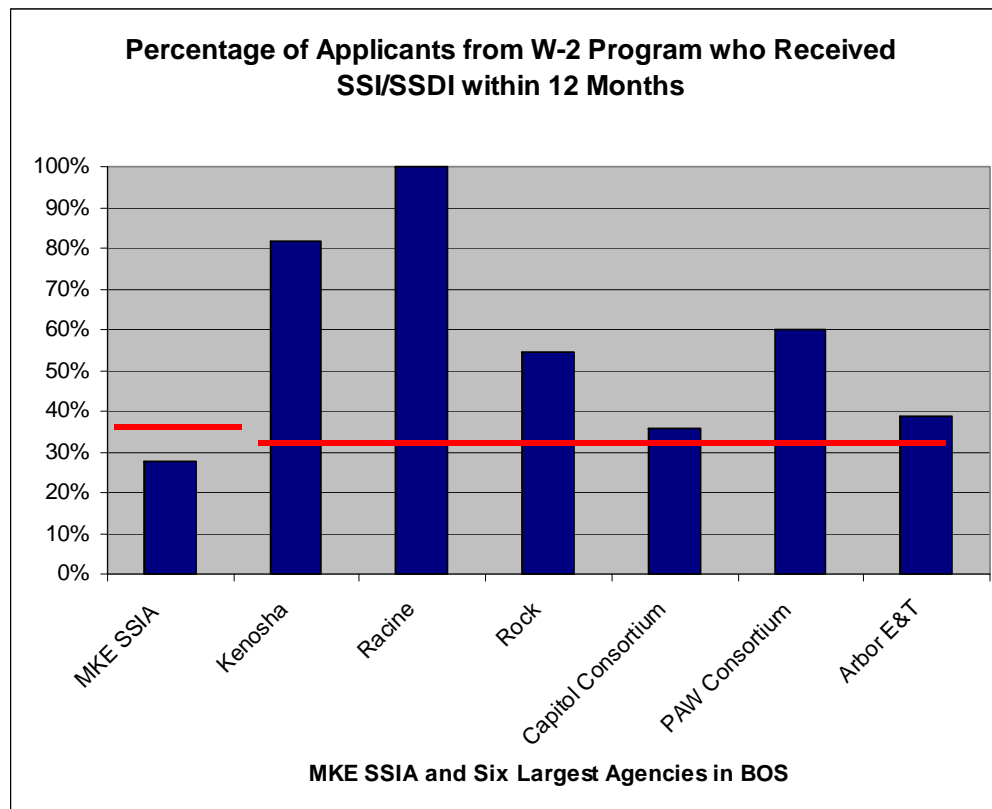
Families increase income.

How many W-2 participants receive Supplemental Security/Social Security Disability Insurance within 12 months?

Analysis

- The DCF standard for SSI/SSDI receipt within 12 months is minimum of
 - 30% for BOS agencies
 - 35% for MKE SSIA
- Year to Date (Jan-Aug)
 - MKE SSIA did not meet the standard
 - 100% (6 of 6) of large BOS agencies met the standard
 - 52% (13 of 25) of other eligible BOS agencies met the standard
 - 61% (19 of 31) of total eligible BOS agencies met the standard

MKE SSIA is not meeting the standard but all six large agencies in BOS are meeting the standard.





Family and Economic Security

Target Direction: 

Parents build skills that prepare them for employment.

How many W-2 participants are meeting federal work requirements?

Analysis

Work Participation Rate	All Families		Two Parent Families	
	Adjusted Target	Rate	Adjusted Target	Rate
FFY 2008	28.1	37.1	18.2	31.6
FFY thru July 2009	28.6	39.8	23.1	32.9

- The performance rates for Federal Fiscal 2009 are year to date (Oct 1, 2008 – July 31, 2009).
- Target is adjusted for caseload reduction credit.
- This is a high stakes measure as Wisconsin is subject to penalty for failing to meet the adjusted target.
- Wisconsin met federal performance standards for FFY 2007, the first year under the 2005 Deficit Reduction Act.

Wisconsin met these federal standards which are applied on a statewide basis.

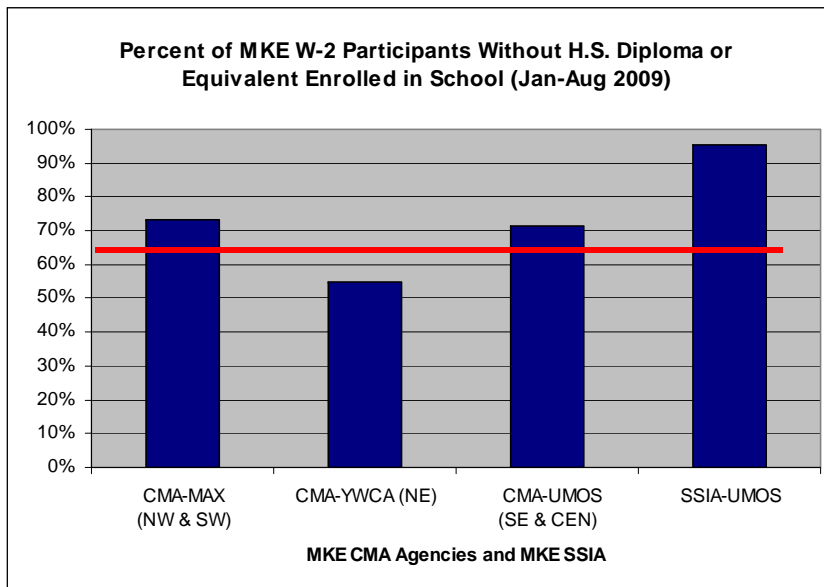


Family and Economic Security

Target Direction: 

Parents build skills that prepare them for employment.

How many Milwaukee County W-2 participants without a high school diploma or the equivalent are enrolled in school?



Analysis

- The DCF standard for school enrollment is minimum of 65% for MKE CMA agencies.
- In August 2009, 60% of all W-2 participants in MKE (7,594) had at least a high school degree or equivalent.
- Year to Date (Jan-Aug)
 - 67% (2 of 3) of MKE CMAs met standard
 - MKE SSIA met standard

This measure does not apply to the MKE JDPA.

In Milwaukee County, 3 of 4 eligible agencies are meeting the standard

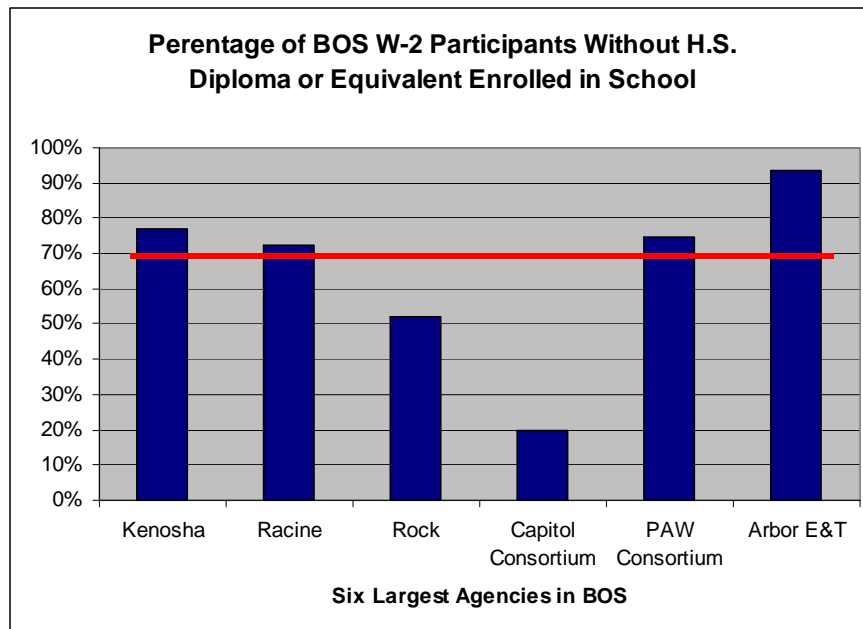


Family and Economic Security

Target Direction: 

Parents build skills that prepare them for employment.

How many Balance of State W-2 participants without a high school diploma or the equivalent are enrolled in school?



Analysis

- The DCF standard for school enrollment is minimum of 65% for BOS agencies.
- In August 2009, 69% of all W-2 participants in BOS (2,885) had at least a high school degree or equivalent.
- Year to Date (Jan-Aug)
 - 67% (4 of 6) of large BOS agencies met the standard
 - 68% (21 of 31) of other eligible BOS agencies met the standard
 - 68% (25 of 37) of total eligible BOS agencies met the standard

In the large BOS agencies, 4 of 6 eligible agencies are meeting the standard

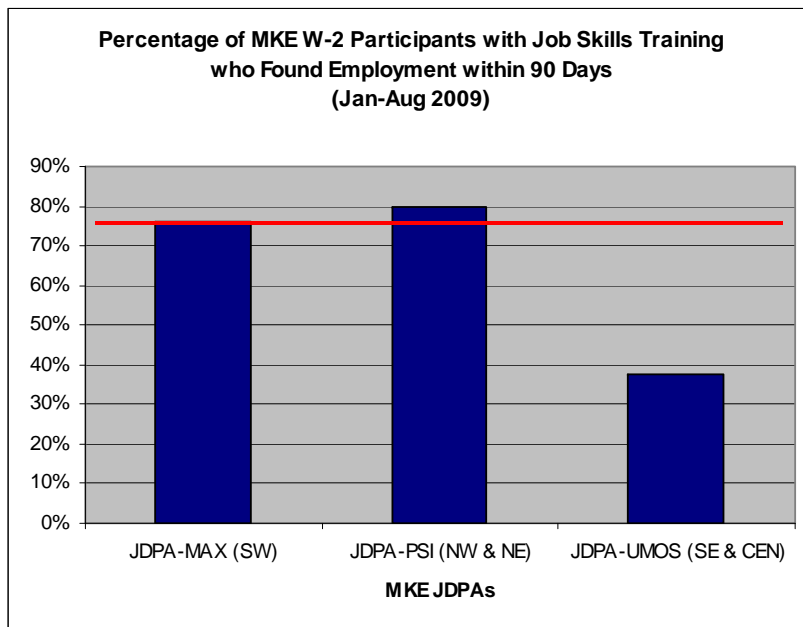


Family and Economic Security

Target Direction: 

Parents build skills that prepare them for employment.

How many W-2 participants from Milwaukee County who have completed a job skills training activity got a job within 90 days of completion?



Analysis

- DCF standard for getting a job within 90 days of successfully completing a job skills training activity is 75%.
- Note that the job does not have to be related to the completed training.
- Year to Date (Jan-Aug)
 - 67% (2 of 3) of JDPAs met standard

This measure does not apply to MKE CMAs.

In Milwaukee County, 2 of 3 eligible agencies are meeting the standard

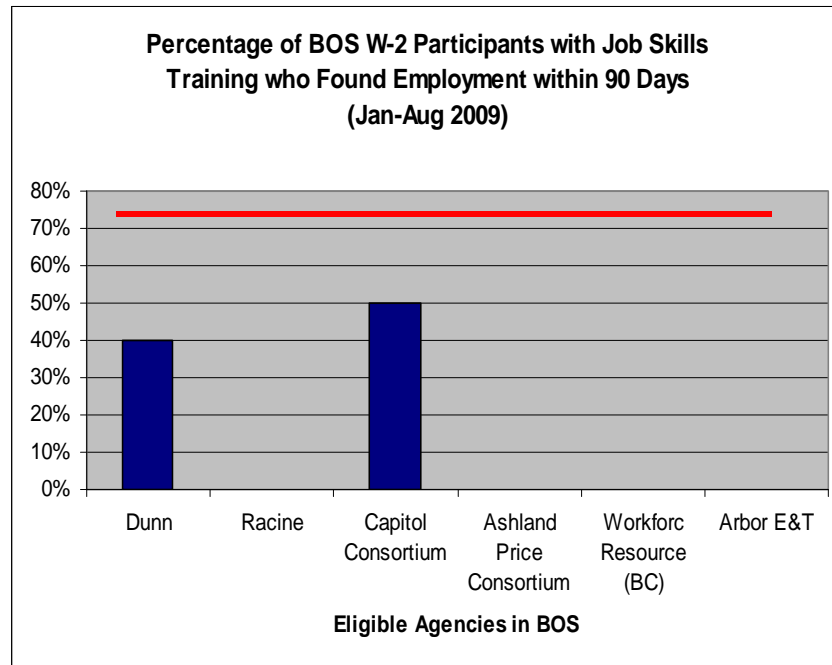


Family and Economic Security

Target Direction: 

Parents build skills that prepare them for employment.

How many W-2 participants from Balance of State who have completed a job skills training activity got a job within 90 days of completion?



Analysis

- DCF standard for getting a job within 90 days of successfully completing a job skills training activity is 75%.
- Note that the job does not have to be related to the completed training.
- Year to Date (Jan-Aug)
 - 14% (6 of 43) of BOS agencies were eligible for this standard since they had a participant who completed a job skills training activity
 - 0% (0 of 6) of total eligible BOS agencies met the standard

In Balance of State, 0 of 6 eligible agencies are meeting the standard



Family and Economic Security

What was the training need for new workers over the 2006-2009 W-2 contract?

NEW WORKER TRAINING	
	# Worker Completed
2006	222
2007 – 2/2/2008	150
3/2008 – 12/2008	160
1/1/2009 – 9/15/2009	109



- New Worker training is required by Administrative Rule.
- Over the course of the contract, fewer new staff were hired.
- In the beginning of the new 2010 contract, the demand for new worker training is expected to increase.



Family and Economic Security

What classroom training was provided to W-2 agency staff during the 2006-2009 contract period?

CLASSROOM TRAININGS				
	# Course Titles	# Classes Held	# Classroom Hours	# Courses Completed
2006	88	432	3,401	5,468
2007	57	245	2,322	3,321
2008*	44	178	1,702	1,742
2009 YTD	36	132	1,554	1,239

*In March 2008, New Worker training was removed from the classroom and converted to a blended format including online courses.

- The demand for classroom training declined as technology options increased and agencies could not afford to send staff to classroom training.



Family and Economic Security

What online training and on-site assistance was provided to W-2 agency staff during the 2006-2009 contract period?

ONLINE COURSES			
	# Course Titles	# Training Hours	# Courses Completed
2006	72	1,669	8,386
2007	71	1,384	7,859
2008	102	1,967	4,239
2009 YTD	66	1,701	2,447

On-Site Technical Assistance	
2008	1,470
2009	1,277

- Ongoing staff are required to take 12 hours of case management training and 12 hours of professional development.
- 100 percent of all W-2 staff met their 2008 annual training requirements.