

Paid and Unpaid W-2 Participants in Wisconsin, Milwaukee and Balance of State

Wisconsin	Placement Type	Jul-08	Aug-08	Sep-08	Oct-08	Nov-08	Dec-08	Jan-09	Feb-09	Mar-09	Apr-09	May-09	Jun-09	Change from Last Month
	CMC	1,318	1,455	1,579	1,535	1,453	1,436	1,407	1,407	1,431	1,472	1,444	1,526	82
	CSJs	2,283	2,237	2,229	2,411	2,466	2,707	2,844	2,957	3,091	3,242	3,304	3,460	156
	TJB	6	7	5	4	5	1	3	3	1	9	7	11	4
	RWJ	1	5	9	10	15	12	8	16	20	14	24	22	-2
	W-2 T	2,593	2,546	2,543	2,595	2,596	2,623	2,591	2,566	2,541	2,596	2,659	2,751	92
	Total Unpaid:	2,872	2,725	2,824	2,811	2,699	2,560	2,346	2,323	2,331	2,302	2,305	2,355	50
	Total Paid:	6201	6250	6365	6555	6535	6779	6853	6949	7084	7333	7438	7770	332
	Total Cases:	9,073	8,975	9,189	9,366	9,234	9,339	9,199	9,272	9,415	9,635	9,743	10,125	382

Milwaukee County	Placement Type	Jul-08	Aug-08	Sep-08	Oct-08	Nov-08	Dec-08	Jan-09	Feb-09	Mar-09	Apr-09	May-09	Jun-09	Change from Last Month
	CMC	478	561	608	589	562	575	562	573	600	629	618	673	55
	CSJs	1,908	1,864	1,834	1,971	2,021	2,206	2,276	2,324	2,378	2,474	2,515	2,607	92
	TJB	4	4	3	3	5	1	2	2	1	9	7	10	3
	RWJ		2	7	8	14	11	7	13	16	11	19	18	-1
	W-2 T	1,973	1,944	1,951	1,960	1,972	1,976	1,946	1,933	1,910	1,960	2,010	2,069	59
	Total Unpaid:	2,508	2,367	2,458	2,450	2,337	2,215	2,023	2,008	2,010	1,992	1,994	2,017	23
	Total Paid:	4,363	4,375	4,403	4,531	4,574	4,769	4,793	4,845	4,905	5,083	5,169	5,377	208
	Total Cases:	6,871	6,742	6,861	6,981	6,911	6,984	6,816	6,853	6,915	7,075	7,163	7,394	231

Balance of State	Placement Type	Jul-08	Aug-08	Sep-08	Oct-08	Nov-08	Dec-08	Jan-09	Feb-09	Mar-09	Apr-09	May-09	Jun-09	Change from Last Month
	CMC	840	894	971	946	891	861	845	834	831	843	826	853	27
	CSJs	375	373	395	440	445	501	568	633	713	768	789	853	64
	TJB	2	3	2	1			1	1				1	1
	RWJ	1	3	2	2	1	1	1	3	4	3	5	4	-1
	W-2 T	620	602	592	635	624	647	645	633	631	636	649	682	33
	Total Unpaid:	364	358	366	361	362	345	323	315	321	310	311	338	27
	Total Paid:	1,838	1,875	1,962	2,024	1,961	2,010	2,060	2,104	2,179	2,250	2,269	2,393	124
	Total Cases:	2,202	2,233	2,328	2,385	2,323	2,355	2,383	2,419	2,500	2,560	2,580	2,731	151

Source: CARES Data Warehouse
W-2 Participant Universe
Served During the Month Participants

**Alternate Methods for Describing Change in the Paid W-2 Caseload
C&I Meeting, July 17, 2009**

Method	Base Month or Period	Number	Current Month or Period	Number	Percent Change
One-year change	Jun-08	6,140	Jun-09	7,770	26.5
Six-month change	Dec-08	6,779	Jun-09	7,770	14.6
Change from low since 2007	Low: April 2007	5,949	Jun-09	7,770	30.6
Three-month average comparison	Average, April-June	6,239	Average, April-June 2009	7,514	20.4
Quarterly Average Data reported to ACF	Average, April-June 2007	17,172	Average, April-May 2009	18,572	8.2

Month to month change since June 2008:

Month	Number	%Change
		Prev Month
08-Jun	6,140	
08-Jul	6,201	1.00%
08-Aug	6,250	0.80%
08-Sep	6,365	1.80%
08-Oct	6,555	3.00%
08-Nov	6,535	-0.30%
08-Dec	6,779	3.70%
09-Jan	6,853	1.10%
09-Feb	6,949	1.40%
09-Mar	7,084	1.90%
09-Apr	7,333	3.50%
09-May	7,438	1.40%
09-Jun	7,770	4.50%

DFES/BWF/R&S, July 15, 2009

W-2 Caseload
Wisconsin
January 2004 - June 2009

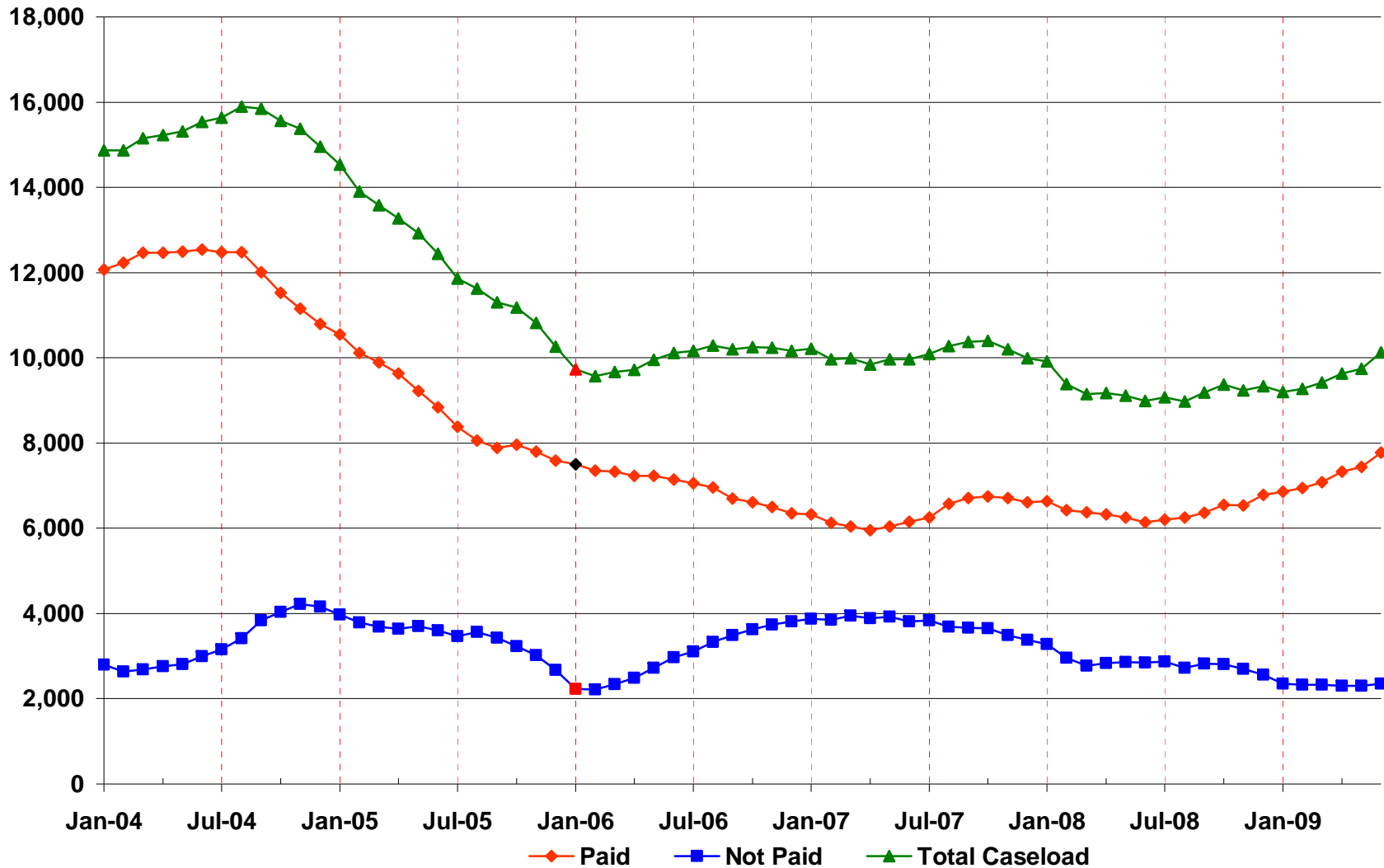
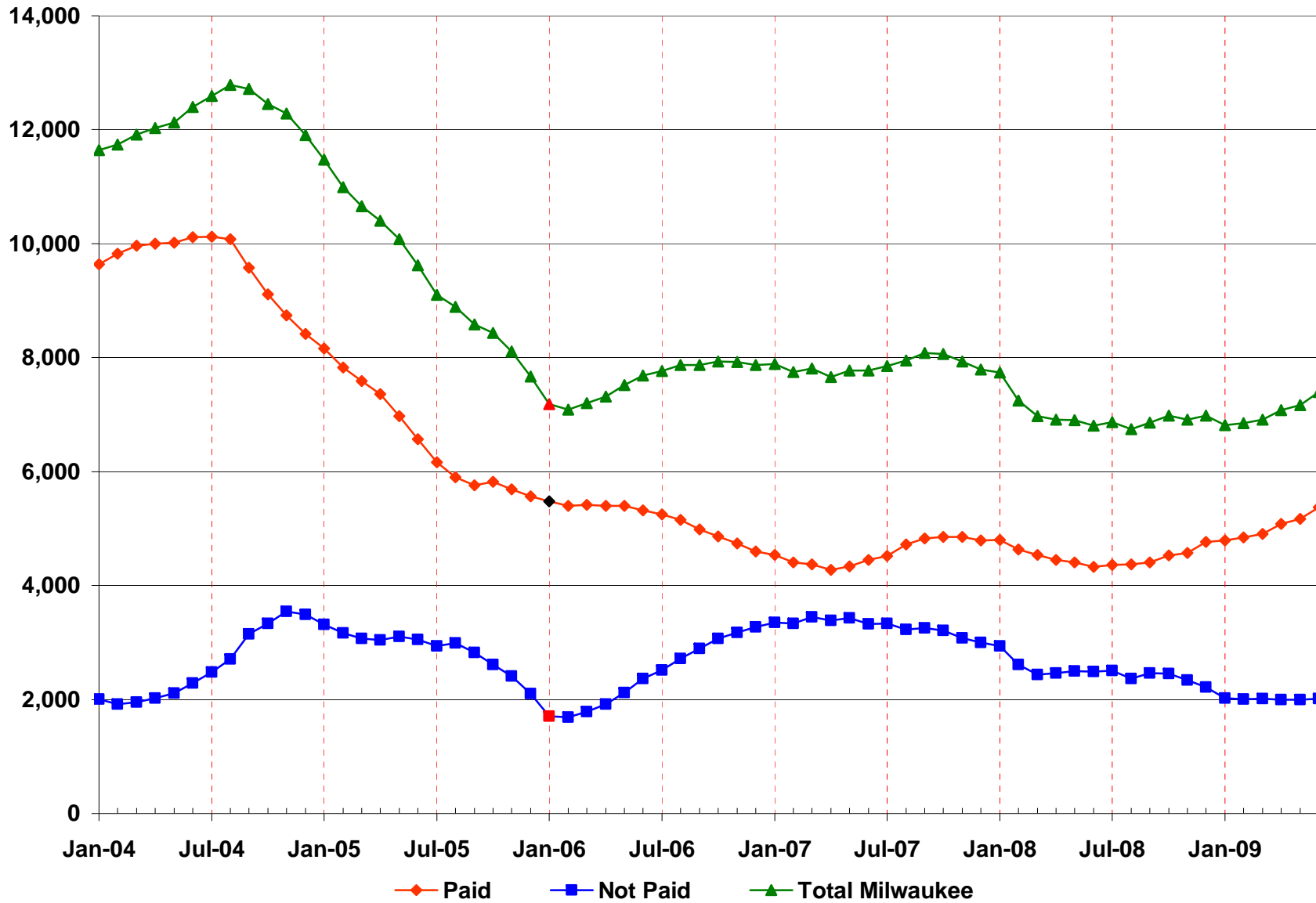


Chart 1
Prepared by DCF/DFES/BWF/R&S
07/15/2009

**W-2 Caseload
Milwaukee
January 2004 - June 2009**



**W-2 Caseload
Balance of State
January 2004 - June 2009**

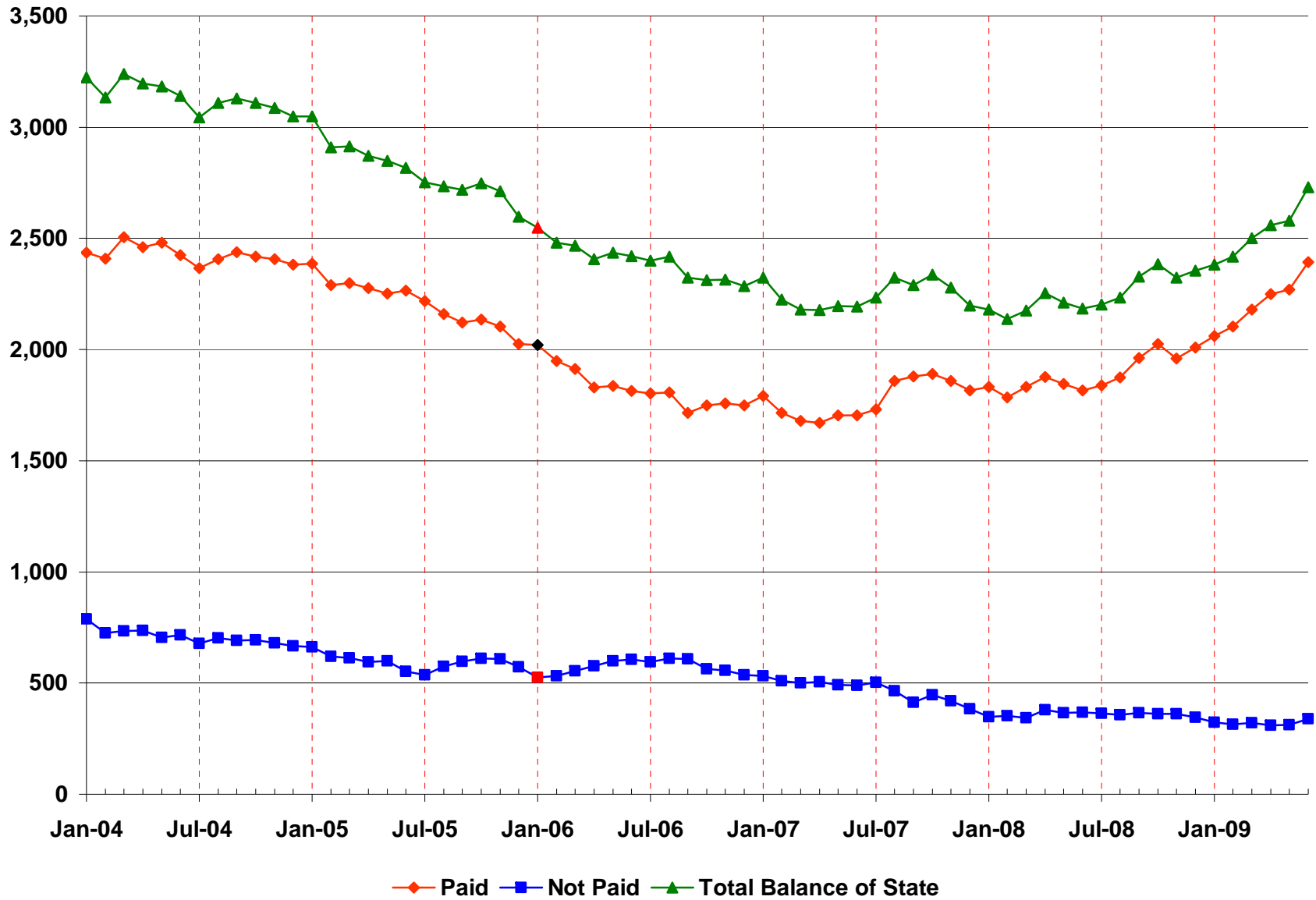


Chart 3
Prepared by DCF/DFES/BWF/R&S
07/15/2009

**W-2 Placements
Wisconsin
January 2004 - June 2009**

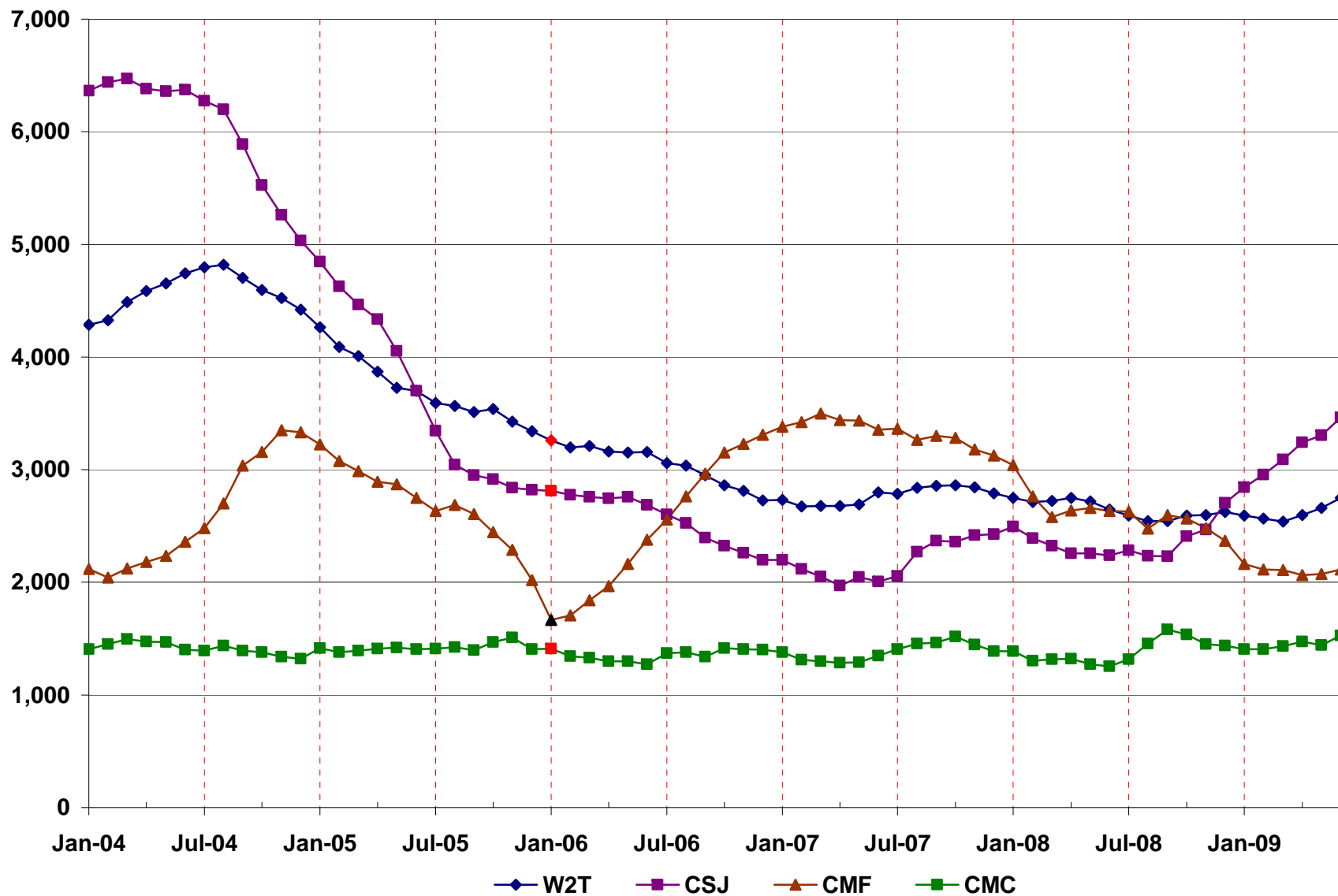


Chart 4
Prepared by DCF/DFES/BWF/R&S
07/15/2009

**W-2 Placements
Milwaukee
January 2004 - June 2009**

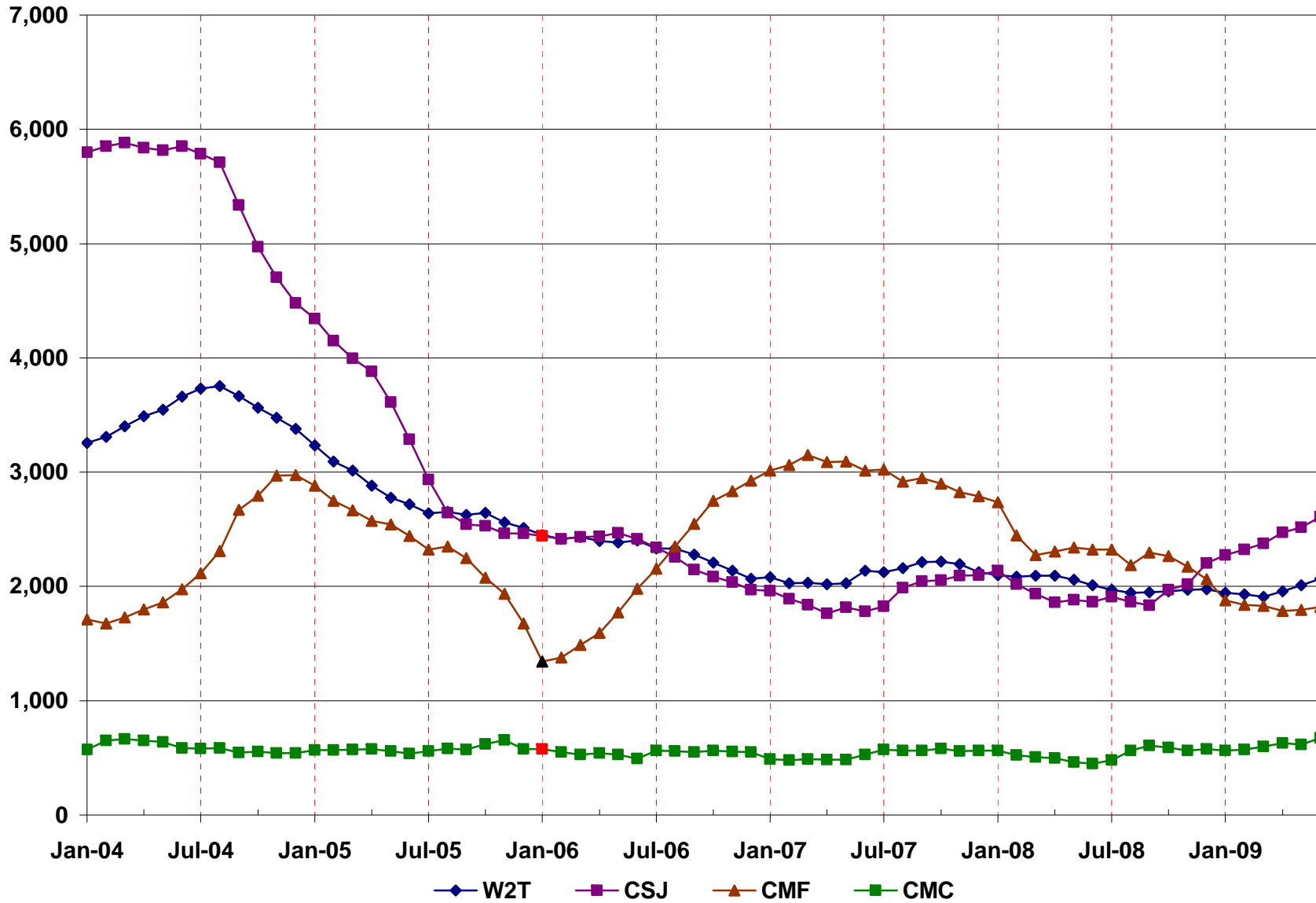


Chart 5
Prepared by DCF/DFES/BWF/R&S
07/15/2009

**W-2 Placements
Balance of State
January 2004 - June 2009**

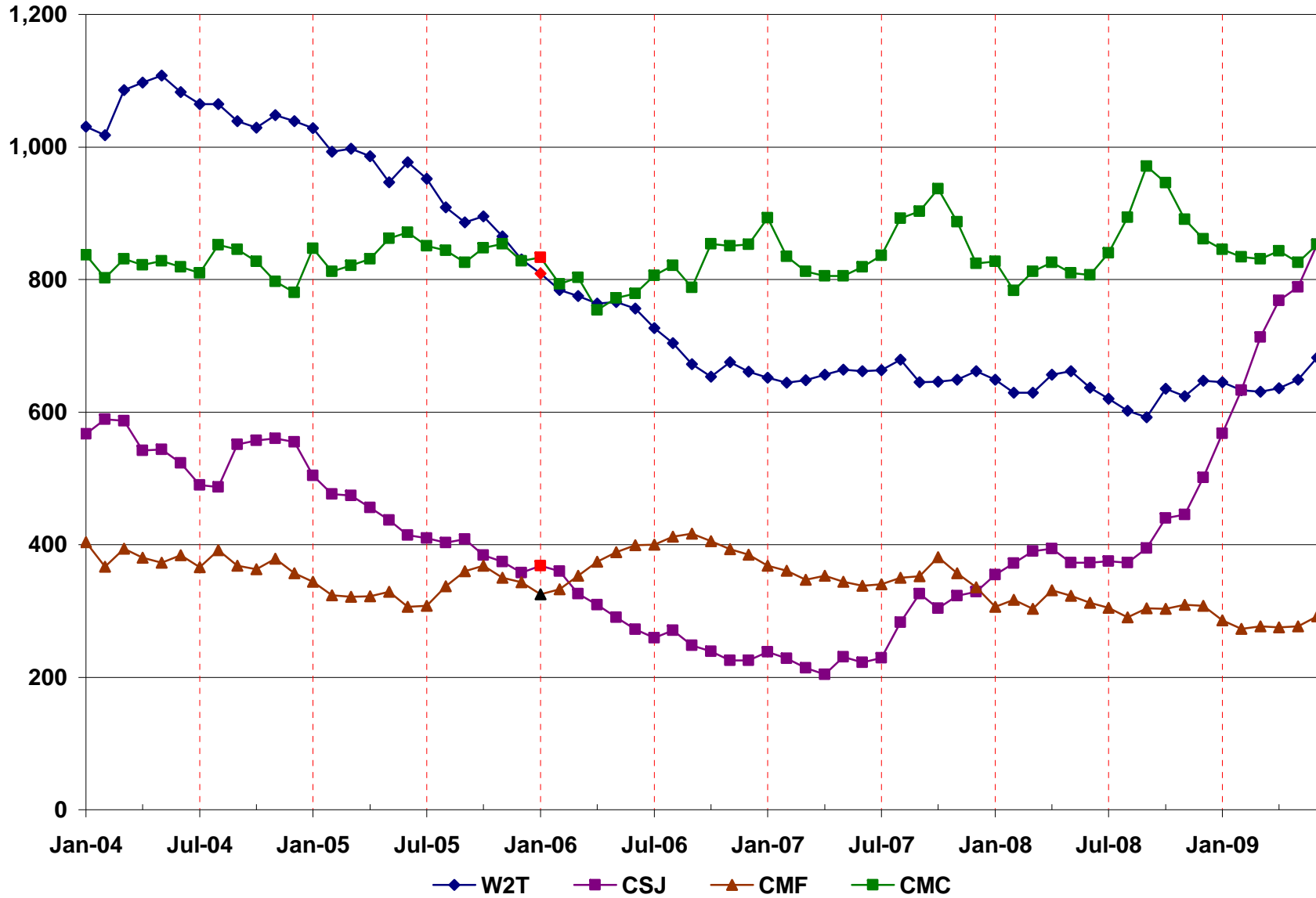


Chart 6
Prepared by DCF/DFES/BWF/R&S
07/15/2009

W-2 Entered Employments
Wisconsin
January 2004 - June 2009

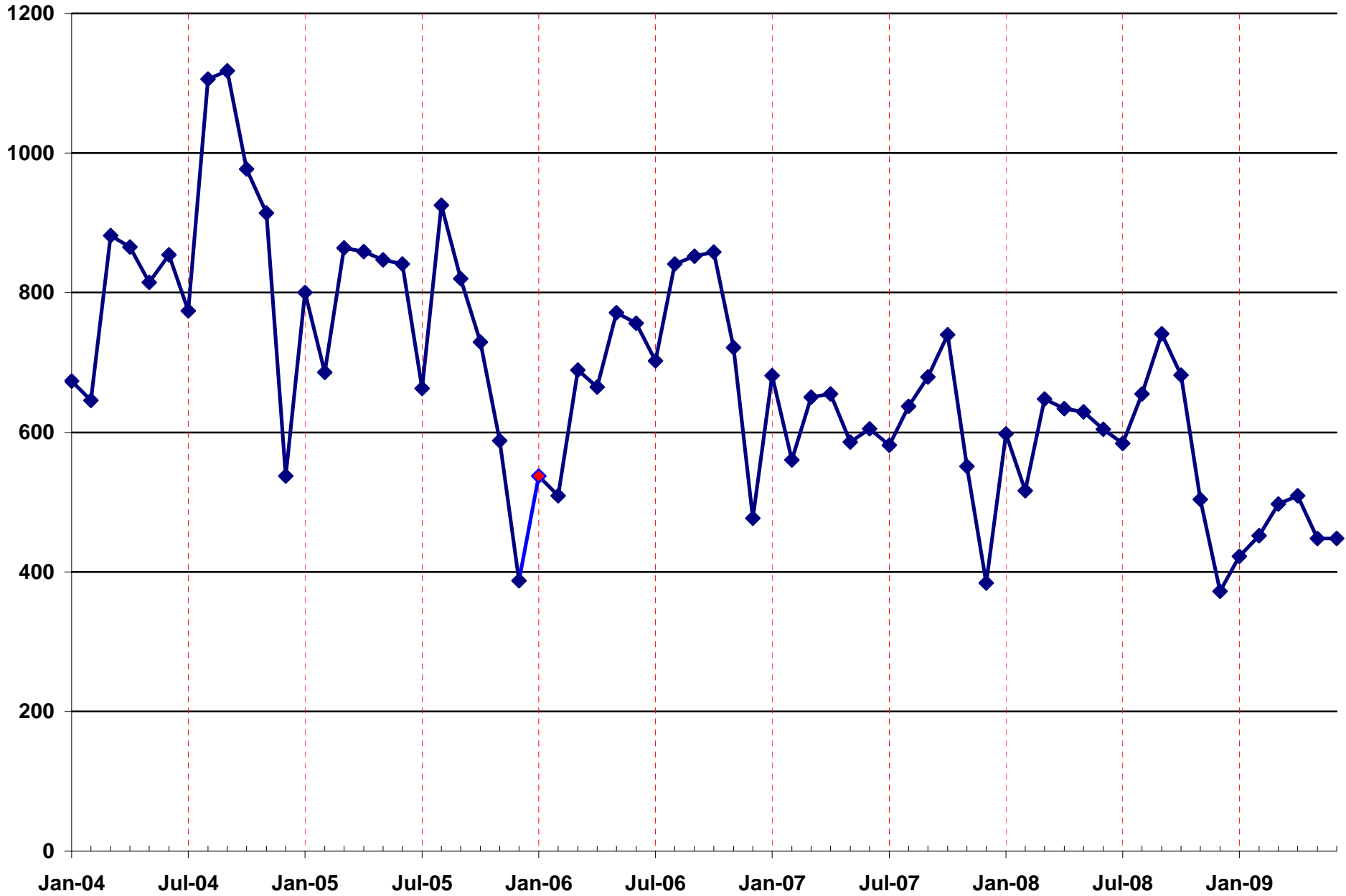


Chart 7
Prepared by DFS/BPSS/R&S
07/15/2009

W-2 Participant/Case Characteristics, Current Month: June 2009

Participant Age	Milwaukee	%	BOS	%	Wisconsin	%
<18	4	0%	0	0%	4	0%
18 -20	1,339	18%	419	15%	1,758	17%
21-24	2,018	27%	653	24%	2,671	26%
25-29	1,532	21%	643	24%	2,175	21%
30-39	1,659	22%	684	25%	2,343	23%
>39	842	11%	332	12%	1,174	12%
Total	7,394	100%	2,731	100%	10,125	100%
Race / Ethnicity	Milwaukee	%	BOS	%	Wisconsin	%
Hispanic / Latino	861	12%	220	8%	1,081	11%
Black / African American	5,348	72%	705	26%	6,053	60%
White	763	10%	1,543	56%	2,306	23%
All Other	229	3%	177	6%	406	4%
Not Reported	193	3%	86	3%	279	3%
Total	7,394	100%	2,731	100%	10,125	100%
Education	Milwaukee	%	BOS	%	Wisconsin	%
<High School Diploma	3,004	41%	841	31%	3,845	38%
HS Graduate or Equivalent	3,729	50%	1,552	57%	5,281	52%
Post High School	641	9%	317	12%	958	9%
Unknown	20	0%	21	1%	41	0%
Total	7,394	100%	2,731	100%	10,125	100%
Paid / Not Paid	Milwaukee	%	BOS	%	Wisconsin	%
Payment	5,377	73%	2,393	88%	7,770	77%
Non-Payment	2,017	27%	338	12%	2,355	23%
Total	7,394	100%	2,731	100%	10,125	100%
Placement	Milwaukee	%	BOS	%	Wisconsin	%
W2T	2,069	28%	682	25%	2,751	27%
CSJ	2,607	35%	853	31%	3,460	34%
TJB	10	0%	1	0%	11	0%
CMC	673	9%	853	31%	1,526	15%
Other	2,035	28%	342	13%	2,377	23%
Total	7,394	100%	2,731	100%	10,125	100%
Disability*	Milwaukee	%	BOS	%	Wisconsin	%
SSI Advocacy/Caring for Family Member	993	13%	329	12%	1,322	13%
Not meeting Disability Definition	6,401	87%	2,402	88%	8,803	87%
Total	7,394	100%	2,731	100%	10,125	100%
Number of Children	Milwaukee	%	BOS	%	Wisconsin	%
Zero	46	1%	12	0%	58	1%
One	3,439	47%	1,293	47%	4,732	47%
Two	2,143	29%	803	29%	2,946	29%
Three	1,045	14%	420	15%	1,465	14%
Four or more	721	10%	203	7%	924	9%
Total	7,394	100%	2,731	100%	10,125	100%
Age Six or Under	Milwaukee	%	BOS	%	Wisconsin	%
Age Six or Under	5,832	79%	2,147	79%	7,979	79%
Other	1,562	21%	584	21%	2,146	21%

Other	1,562	21%	584	21%	2,146	21%
Total	7,394	100%	2,731	100%	10,125	100%

* Disability is defined as: Caring for a disabled child or family member, applying or receiving SSI/SSDI, or in the SSI Advocacy office.

W-2 Participant Characteristics Every December 1998 thru 2008

Participant Age	Dec-98	Dec-99	Dec-00	Dec-01	Dec-02	Dec-03	Dec-04	Dec-05	Dec-06	Dec-07	Dec-08
<18	0%	0%	0%	0%	0%	0%	0%	0%	0%	0%	0%
18 -20	14%	15%	17%	17%	16%	16%	14%	15%	15%	16%	16%
21-24	22%	23%	24%	24%	25%	25%	24%	23%	26%	26%	26%
25-29	22%	21%	20%	20%	20%	21%	21%	20%	21%	22%	23%
30-39	30%	29%	28%	27%	26%	26%	27%	25%	23%	23%	23%
>39	12%	12%	12%	12%	12%	13%	14%	15%	14%	14%	13%
Percent:	100%	100%	100%	100%	100%	100%	100%	100%	100%	100%	100%
Race/Ethnicity											
Hispanic / Latino	7%	8%	8%	8%	8%	10%	9%	9%	9%	10%	10%
Black / African American	62%	60%	56%	55%	55%	64%	65%	61%	63%	62%	61%
White	18%	19%	21%	23%	21%	22%	20%	23%	21%	22%	23%
All Other	4%	3%	2%	2%	2%	3%	5%	7%	5%	4%	4%
Not Reported	9%	11%	13%	13%	14%	2%	1%	1%	2%	2%	3%
Percent:	100%	100%	100%	100%	100%	100%	100%	100%	100%	100%	100%
Education											
<High School Diploma	57%	55%	51%	50%	47%	46%	47%	48%	44%	42%	38%
HS Grad. or Equivalent	34%	35%	39%	40%	42%	43%	42%	42%	45%	48%	52%
Post High School	9%	9%	10%	10%	11%	11%	11%	10%	10%	10%	10%
Unknown	0%	0%	0%	0%	0%	0%	0%	0%	0%	0%	0%
Percent:	100%	100%	100%	100%	100%	100%	100%	100%	100%	100%	100%
Paid / Not Paid											
Payment	69%	61%	59%	71%	71%	79%	72%	74%	62%	66%	73%
Non-Payment	31%	39%	41%	29%	29%	21%	28%	26%	38%	34%	27%
Percent:	100%	100%	100%	100%	100%	100%	100%	100%	100%	100%	100%
Placement											
W2T	18%	21%	22%	24%	24%	28%	30%	33%	27%	28%	28%
CSJ	45%	31%	28%	37%	37%	42%	34%	27%	22%	24%	29%
TJB	0%	0%	0%	0%	0%	0%	0%	0%	0%	0%	0%
CMC	6%	8%	9%	10%	9%	9%	9%	14%	14%	14%	15%
Other	31%	39%	41%	29%	29%	21%	28%	26%	38%	34%	28%
Percent:	100%	100%	100%	100%	100%	100%	100%	100%	100%	100%	100%
Number of Children											
Zero	0%	0%	0%	1%	0%	0%	0%	0%	0%	1%	0%
One	35%	37%	39%	42%	43%	44%	45%	45%	49%	45%	45%
Two	29%	29%	29%	29%	29%	28%	28%	28%	27%	29%	30%
Three	18%	18%	17%	16%	16%	16%	16%	15%	13%	15%	15%
Four or more	17%	16%	14%	13%	12%	11%	11%	11%	10%	10%	10%
Percent:	100%	100%	100%	100%	100%	100%	100%	100%	100%	100%	100%
Age of Youngest Child											
Age Six or Under	73%	73%	75%	74%	73%	73%	71%	73%	74%	76%	78%
Other	27%	27%	25%	26%	27%	27%	29%	27%	26%	24%	22%
Percent:	100%	100%	100%	100%	100%	100%	100%	100%	100%	100%	100%
Car +/-or License											
Car & License	12%	13%	13%	13%	14%	15%	15%	14%	15%	16%	16%
No Car & No License	67%	65%	63%	61%	58%	58%	59%	59%	59%	58%	57%
Other	21%	22%	24%	26%	27%	28%	27%	27%	26%	26%	27%
Percent:	100%	100%	100%	100%	100%	100%	100%	100%	100%	100%	100%
Marital Status											
Single / Not Married	83%	84%	84%	84%	84%	85%	84%	84%	87%	88%	88%
Married / Separated	17%	16%	16%	16%	16%	15%	16%	16%	13%	12%	12%
Not Known	0%	0%	0%	0%	0%	0%	0%	0%	0%	0%	0%
Percent:	100%	100%	100%	100%	100%	100%	100%	100%	100%	100%	100%
Gender											
Female	97%	97%	96%	95%	95%	95%	93%	93%	95%	95%	95%
Male	3%	3%	4%	5%	5%	5%	7%	7%	5%	5%	5%