

# Wisconsin Works (W-2) Critical Indicators



Bureau of Working Families  
Division of Family and Economic Security  
Department of Children and Families

**DCF**  
State of Wisconsin



**March  
2009**

## Wisconsin W-2 Participants in Paid Placements\*

### Number of Participants in Paid Placements

	One Year Ago	Last Month	This Month	Change in Most Recent Two Months	
	Mar 2008	Feb 2009	Mar 2009	Number	Percent
<b>Paid Participants:</b>					
Milwaukee County	4,541	4,845	4,905	60	1.2%
Balance of State	1,832	2,104	2,179	75	3.6%
Statewide Caseload	6,373	6,949	7,084	135	1.9%
<b>Milwaukee County Regions:</b>	<b>Mar 2008</b>	<b>Feb 2009</b>	<b>Mar 2009</b>	<b>Number</b>	<b>Percent</b>
Milwaukee NE YWCA	532	608	619	11	1.8%
Milwaukee SE UMOS	761	876	912	36	4.1%
Milwaukee Central UMOS	1,196	1,311	1,314	3	0.2%
Milwaukee NW MAXIMUS	953	967	974	7	0.7%
Milwaukee SW MAXIMUS	686	798	813	15	1.9%
Milwaukee SSI-Adv UMOS	406	279	268	-11	-3.9%
<b>Milwaukee County Total*:</b>	<b>4,541</b>	<b>4,845</b>	<b>4,905</b>	<b>60</b>	<b>1.2%</b>

Source: CARES, Bureau of Working Families, Division of Family and Economic Security, Department of Children & Families

\*Note: Milwaukee County total includes a small number of cases served by Milwaukee County Department of Social Services.

Note: The paid caseload includes the following categories of placements:

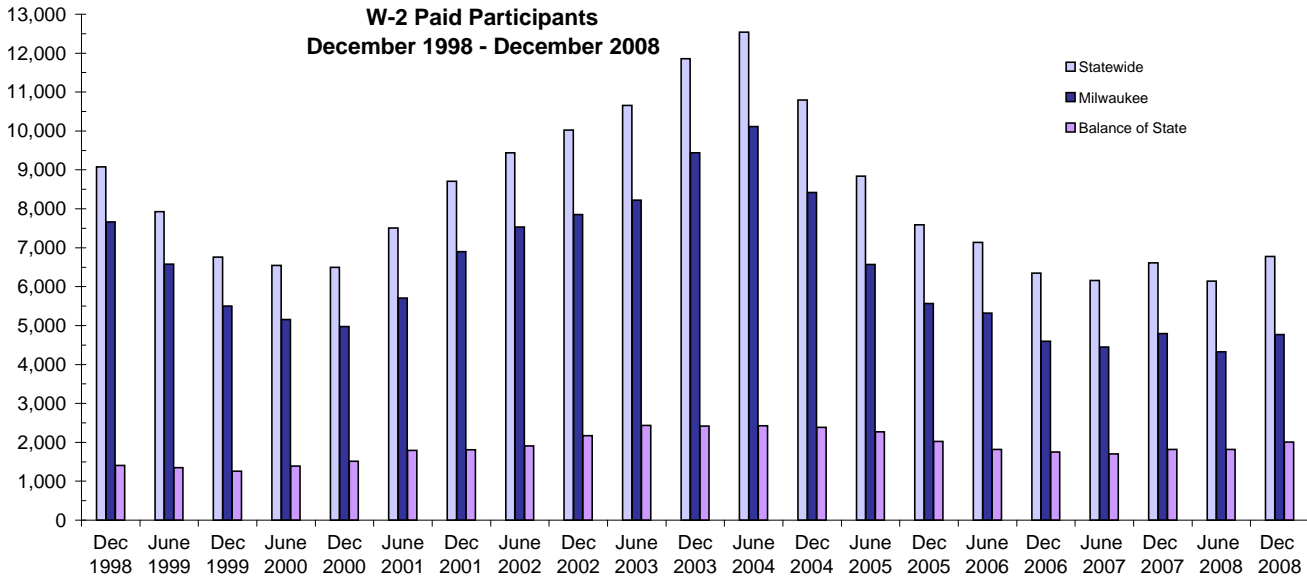
W-2 Transition (W-2T)..... A W-2 work-readiness practice placement for individuals who are unable to perform independent, self-sustaining work, but who are able to participate in work practice or other developmental activities and training up to their abilities.

Community Service Job (CSJ)..... A W-2 work-readiness practice placement designed to improve the employability of participants by providing work experience and training in the public and private sectors.

Trial Job (TJB)..... A W-2 subsidized employment position that provides work experience and training which may become permanent, unsubsidized employment. Paid directly to the employer.

Caretaker of Newborn (CMC)..... A custodial parent of a child who is 12 weeks old or less and who meets the financial and non-financial eligibility requirements for W-2 employment positions.

## W-2 Paid Participants and Benefits Paid

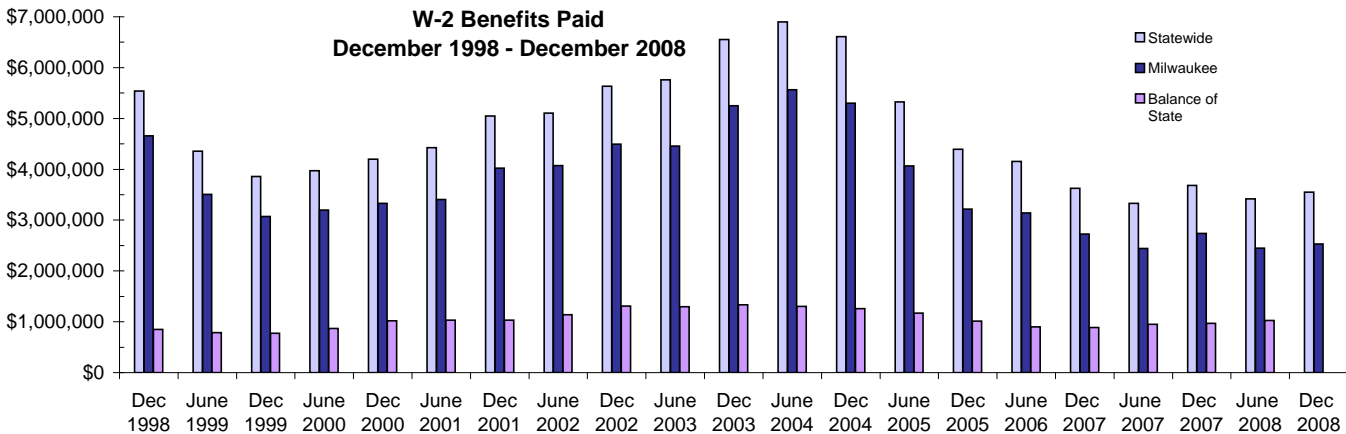


### W-2 Paid Participants - Most Recent Six Months

	Oct 2008	Nov 2008	Dec 2008	Jan 2009	Feb 2009	Mar 2009
<b>Milwaukee County</b>	4,531	4,574	4,769	4,793	4,845	4,905
<b>Balance of State</b>	2,024	1,961	2,010	2,060	2,104	2,179
<b>Statewide</b>	6,555	6,535	6,779	6,853	6,949	7,084

Source: CARES, Bureau of Working Families, Division of Family and Economic Security, Department of Children & Families

Note: The paid participants included in this count are participants who were in a paid placement during the report month.



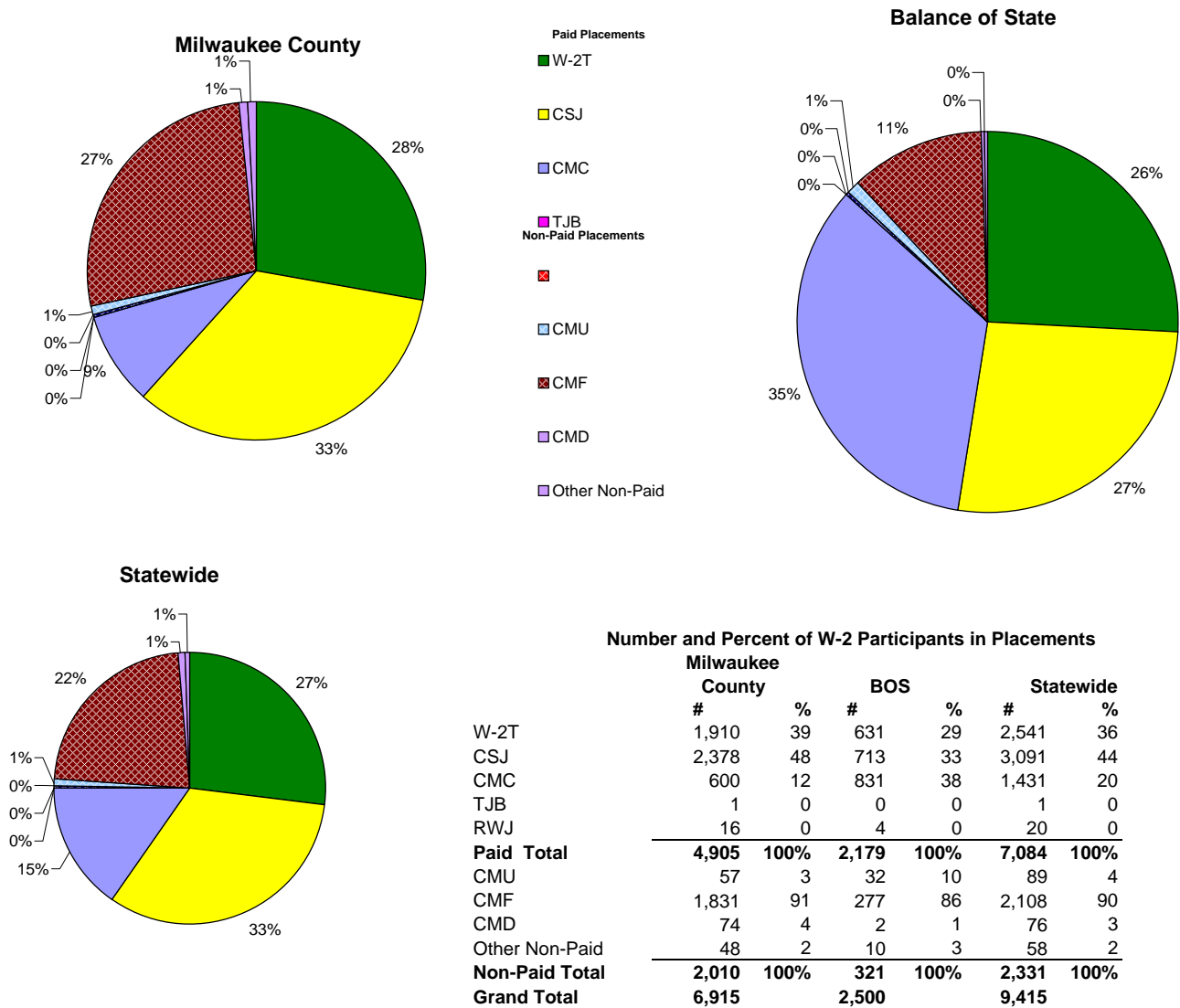
### W-2 Benefits Paid - Most Recent Six Months

	Oct 2008	Nov 2008	Dec 2008	Jan 2009	Feb 2009	Mar 2009
<b>Milwaukee County</b>	\$2,453,688	\$2,441,698	\$2,529,398	\$2,598,664	\$2,632,886	\$2,660,090
<b>Balance of State</b>	\$991,882	\$1,011,636	\$1,023,535	\$1,013,001	\$1,033,298	\$1,053,180
<b>Statewide</b>	\$3,445,570	\$3,453,334	\$3,552,933	\$3,611,665	\$3,666,184	\$3,713,270

Source: CARES, Bureau of Working Families, Division of Family and Economic Security, Department of Children & Families

Note: The benefits paid are the total monthly net benefits after sanctions and recoupments are applied.

## Placement of W-2 Participants, March 2009

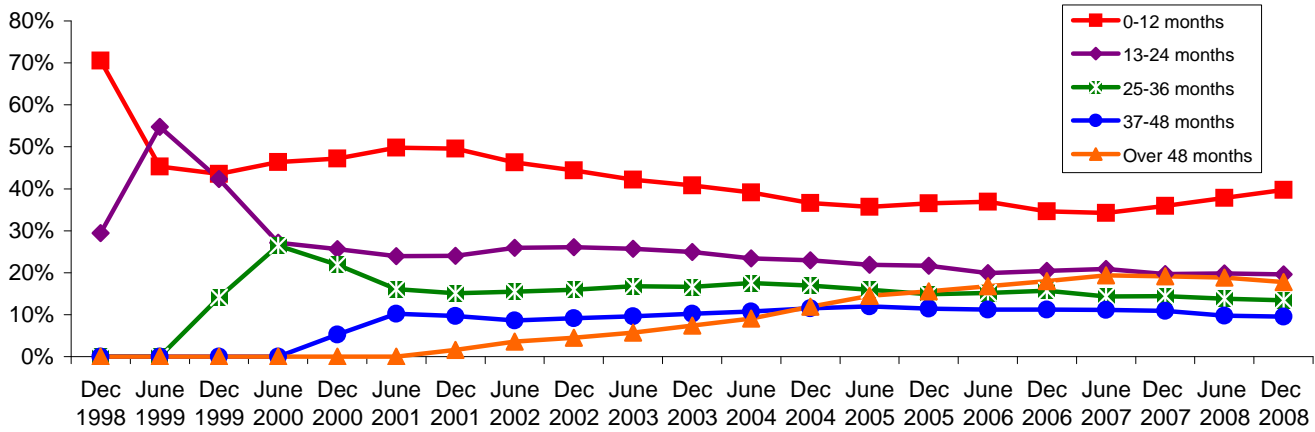


Source: CARES, Bureau of Working Families, Division of Family and Economic Security, Department of Children & Families.

- Note: W-2 Transition (W-2T)..... A W-2 work-readiness practice placement for individuals who are unable to perform independent, self-sustaining work, but who are able to participate in work practice or other developmental activities and training up to their abilities.
- Community Service Job (CSJ)..... A W-2 work-readiness practice placement designed to improve the employability of participants by providing work experience and training in the public and private sectors.
- Trial Job (TJB) and Real Work Real Pay Pilot (RWJ)..... A W-2 subsidized employment position that provides work experience and training which may become permanent, unsubsidized employment. Subsidy is paid directly to the employer.
- Case Mgmt - Caretaker of a Newborn (CMC)..... A custodial parent of a child who is 12 weeks old or less and who meets the financial and non-financial eligibility requirements for W-2 employment positions.
- Case Mgmt - Pregnancy (CMP)..... A participant with a medically verified pregnancy.
- Case Mgmt - Follow - Up ( CMF )..... Used for Placement for Individuals who move from a W-2 benefit Placement to unsubsidized employment.
- Case Mgmt- Denied Extension CMD)..... Participants who exhausted time-limited benefits but are receiving services.
- Case Mgmt - Service for Working (CMU)..... Used for individuals working in unsubsidized employment who are without barriers to full-time employment.
- Case Mgmt - Non-Custodial Parent (CMN)..... Used for case management services for non-custodial parents.
- Case Mgmt - Minor Parent (CMM)..... Used for case management services for a custodial minor parent.

## Number of Months Served in W-2 \*

### Percentage Distribution- Statewide December 1998- December 2008

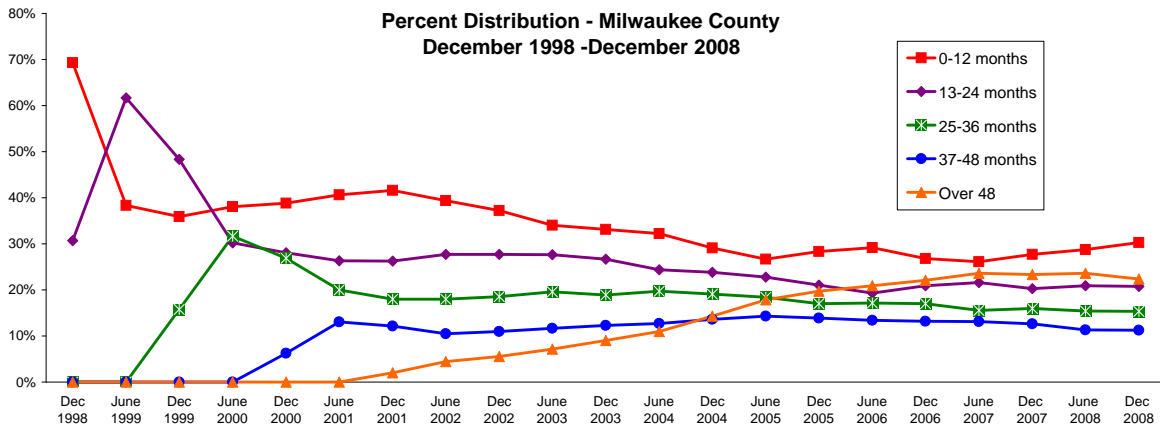


Source: CARES, Bureau of Working Families, Division of Family and Economic Security, Department of Children & Families.  
 \* Note: Length of stay is determined for the W-2 participants in the report month by the number of total months a participant has been in W-2 since the beginning of the program.

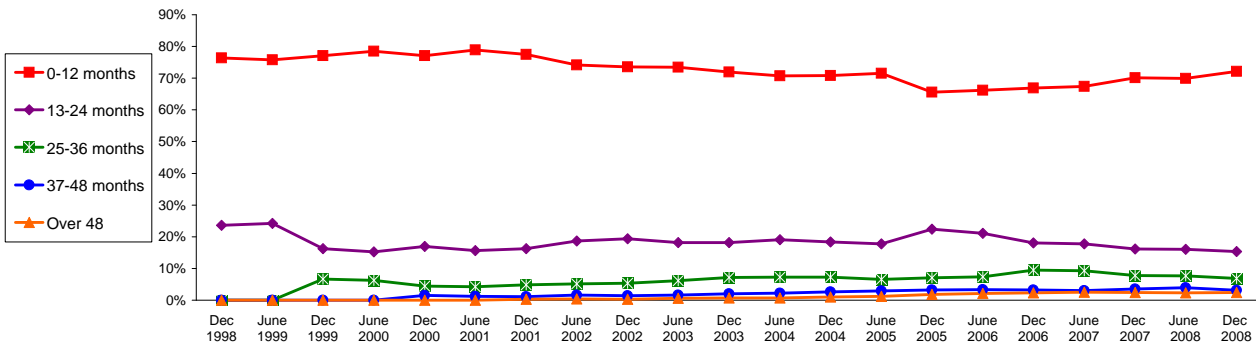
### Number of Months Served in W-2 - Most Recent Six Months

	Months	Oct 2008	Nov 2008	Dec 2008	Jan 2009	Feb 2009	Mar 2009
<b>Milwaukee County</b>	0-12	2,090	2,081	2,144	2,178	2,214	2,240
	13-24	1,498	1,464	1,469	1,432	1,410	1,445
	25-36	1,091	1,086	1,087	1,047	1,073	1,053
	37-48	811	802	798	753	770	785
	Over 48	1,585	1,569	1,584	1,502	1,477	1,487
<b>Balance of State</b>	0-12	1,868	1,792	1,812	1,823	1,875	1,925
	13-24	364	374	386	390	394	425
	25-36	162	165	172	176	165	164
	37-48	83	86	78	78	74	71
	Over 48	55	57	62	59	64	65
<b>Statewide</b>	0-12	3,722	3,640	3,708	3,768	3,851	3,919
	13-24	1,835	1,809	1,832	1,796	1,777	1,849
	25-36	1,251	1,246	1,250	1,218	1,237	1,216
	37-48	901	898	888	839	851	859
	Over 48	1,656	1,641	1,661	1,578	1,556	1,572

## Number of Months Served in W-2\* , Continued



**Percent Distribution - Balance of State  
December 1998 - December 2008**

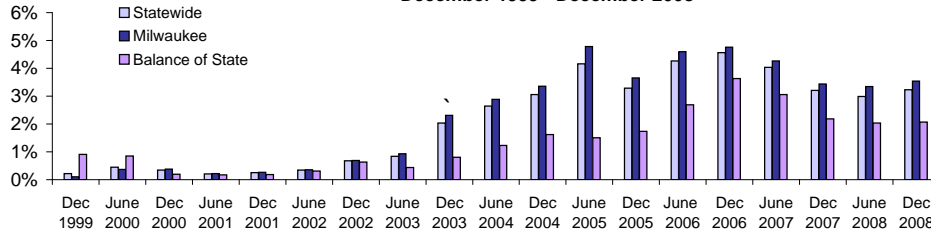


Source: CARES, Bureau of Working Families, Division of Family and Economic Security, Department of Children & Families

\* Length of stay is determined for the W-2 participants in the report month by the number of total months a participant has been in W-2 since the beginning of the program. Participants may be counted more than once if their geographic location changes from Milwaukee to Balance of State or vice versa.

## Extensions Granted for 24 - Month Clocks\*

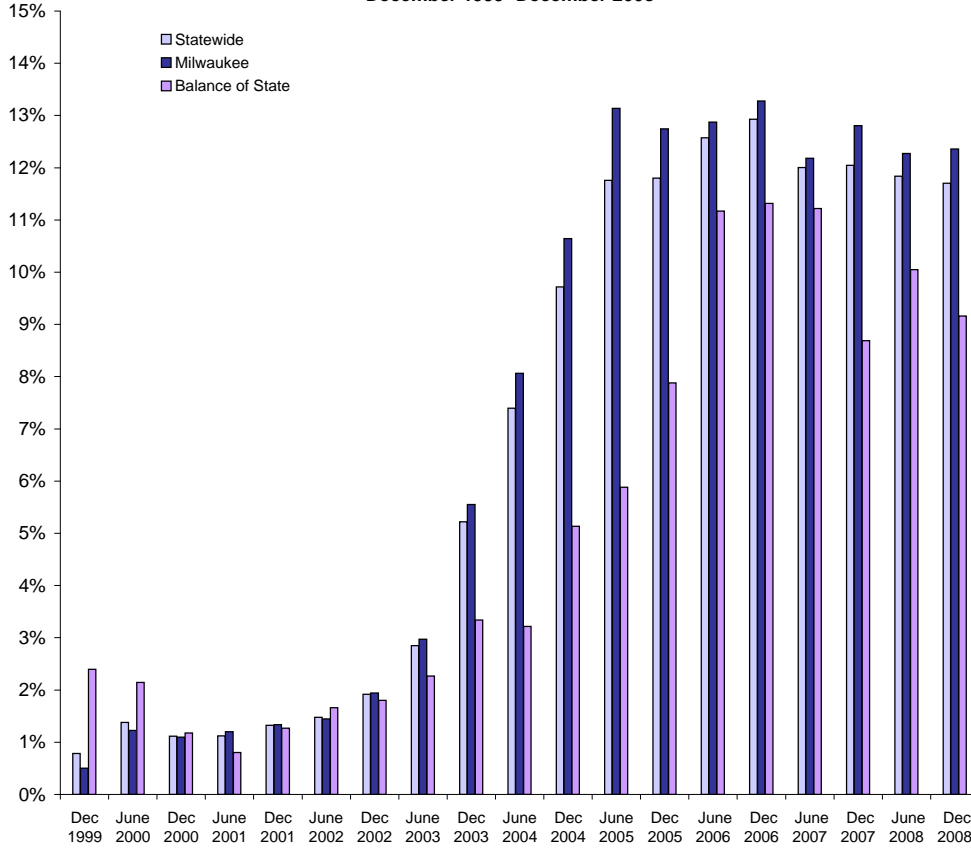
**Percent of W-2T & CSJ Participants with Beginning Extensions  
December 1999 - December 2008**



**Number of Beginning Extensions - Most Recent Six Months**

	Oct 2008	Nov 2008	Dec 2008	Jan 2009	Feb 2009	Mar 2009
<b>Milwaukee County</b>	145	154	146	149	135	145
<b>Balance of State</b>	29	30	23	33	15	18
<b>Statewide</b>	174	184	169	182	150	163

**Percent of W-2T & CSJ Participants with Ongoing Extensions  
December 1999 - December 2008**



**Number of Ongoing Extensions - Most Recent Six Months**

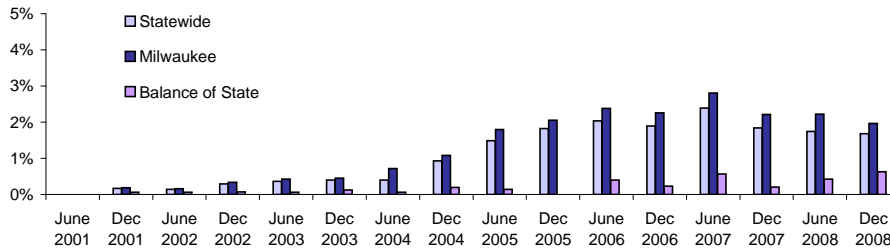
	Oct 2008	Nov 2008	Dec 2008	Jan 2009	Feb 2009	Mar 2009
<b>Milwaukee County</b>	474	476	486	492	488	497
<b>Balance of State</b>	96	97	93	98	92	91
<b>Statewide</b>	570	573	579	590	580	588

Source: CARES, Bureau of Working Families, Division of Family and Economic Security, Department of Children & Families.

\* Extensions can be granted after 24 months of participation in a W-2T or CSJ placement. Extensions are granted when the participant is nearing the 24th month of their placement clock and they qualify for extended eligibility by meeting specific required criteria. Participants may be counted more than once if the participant's extension lasts longer than six months. Ongoing extensions are an end of the month count.

## Extensions Granted for 60- Month Clocks\*

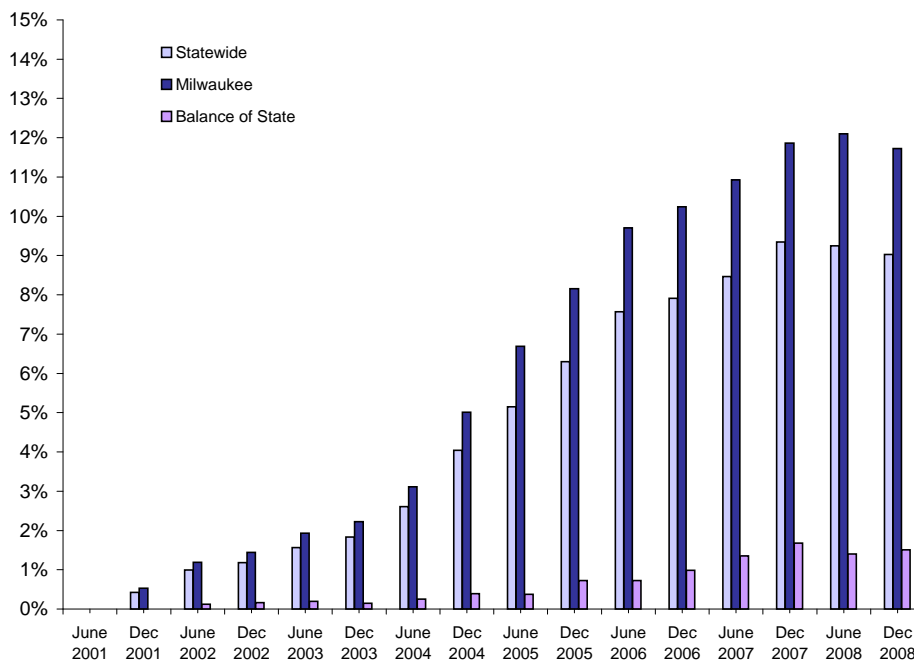
**Percent of Participants with Beginning Extensions  
June 2001 - December 2008**



**Number of Beginning Extensions - Most Recent Six Months**

	Oct 2008	Nov 2008	Dec 2008	Jan 2009	Feb 2009	Mar 2009
<b>Milwaukee County</b>	105	95	81	86	96	91
<b>Balance of State</b>	6	8	7	7	7	6
<b>Statewide</b>	111	103	88	93	103	97

**Percent of Participants with Ongoing Extensions  
June 2001 -December 2008**



**Number of Ongoing Extensions - Most Recent Six Months**

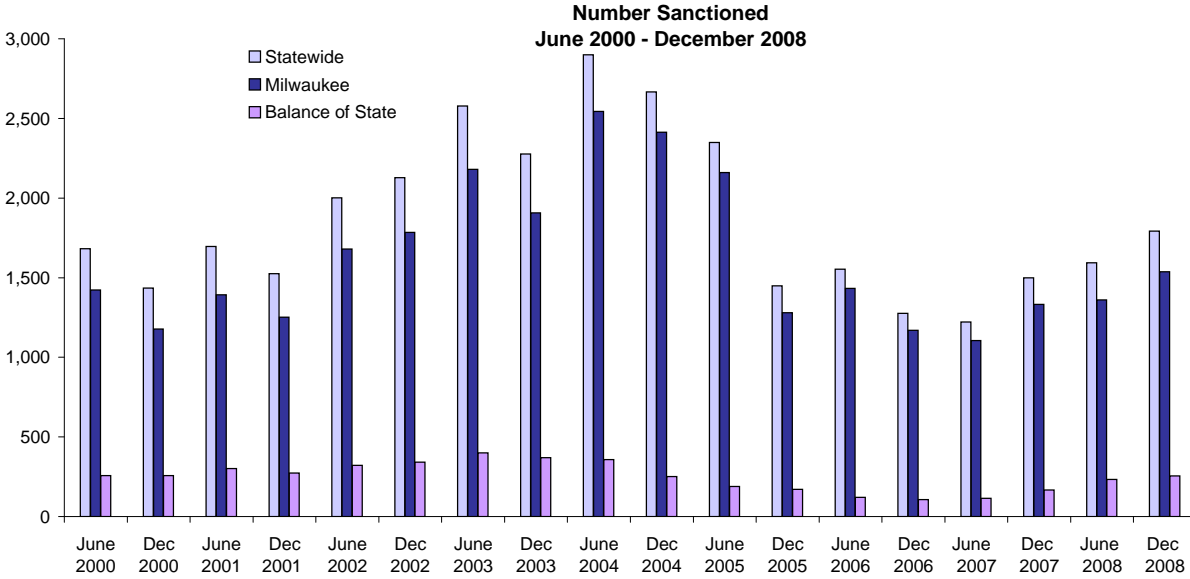
	Oct 2008	Nov 2008	Dec 2008	Jan 2009	Feb 2009	Mar 2009
<b>Milwaukee County</b>	526	533	519	508	506	512
<b>Balance of State</b>	22	21	24	27	28	28
<b>Statewide</b>	548	554	543	535	534	540

Source: CARES, Bureau of Working Families, Division of Family and Economic Security, Department of Children & Families.

Note: Extensions can be granted after 60 months of lifetime participation. Extensions are granted when the participant is nearing the 60th month of their lifetime clock and they qualify for extended eligibility by meeting specific required criteria. The 60- month extensions first became relevant as of September 2001.

\* Participants may be counted more than once if the participant's extension lasts longer than six months. Ongoing Extensions are an end of the month count.

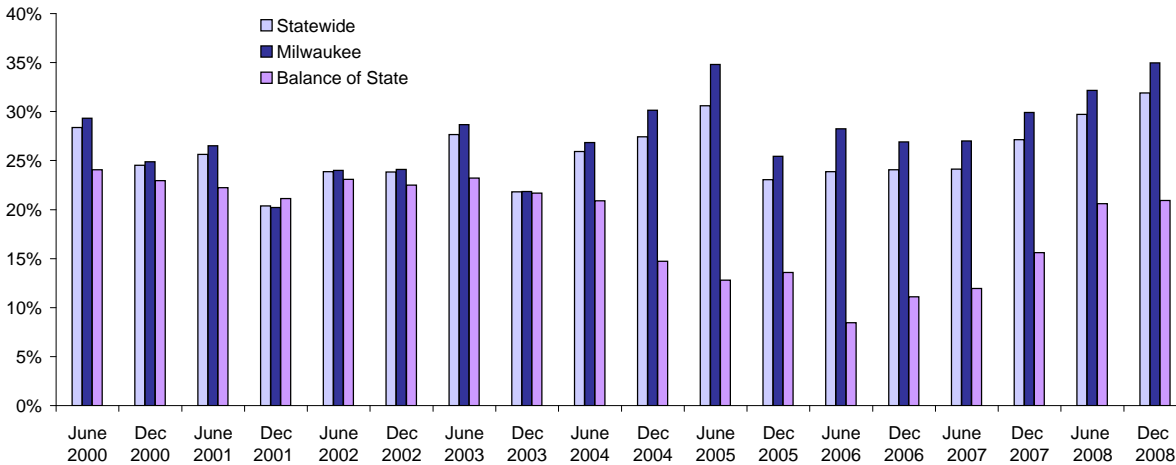
## W-2T and CSJ Participants Who Were Sanctioned



### Number Sanctioned - Most Recent Six Months

	Oct 2008	Nov 2008	Dec 2008	Jan 2009	Feb 2009	Mar 2009
<b>Milwaukee County</b>	1,433	1,470	1,537	1,597	1,715	1,687
<b>Balance of State</b>	222	258	256	286	342	374
<b>Statewide</b>	1,655	1,728	1,793	1,883	2,057	2,061

### Percent Sanctioned June 2000 - December 2008



### Percent Sanctioned - Most Recent Six Months

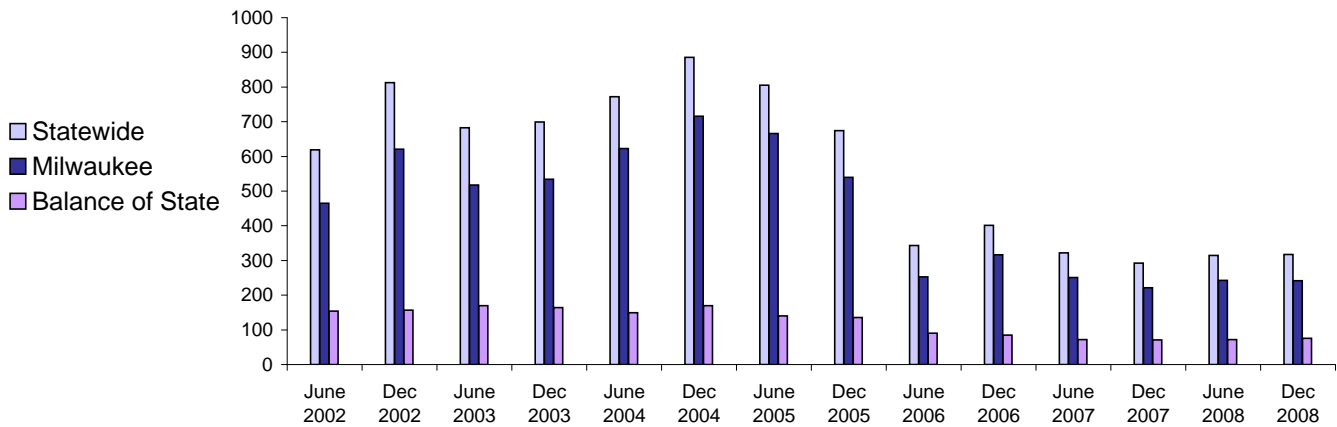
	Oct 2008	Nov 2008	Dec 2008	Jan 2009	Feb 2009	Mar 2009
<b>Milwaukee County</b>	34%	34%	35%	36%	38%	37%
<b>Balance of State</b>	19%	22%	21%	22%	25%	25%
<b>Statewide</b>	30%	31%	32%	33%	35%	34%

Source: CARES, Bureau of Working Families, Division of Family and Economic Security, Department of Children & Families.

Note: Because sanction counts prior to September 1999 were counted differently they are not included in these graphs. The graphs on this page report information on the sanctionable population (W-2T and CSJ placements only). The data represented here are point in time during a month.

# Entered Employments of W-2 Participants

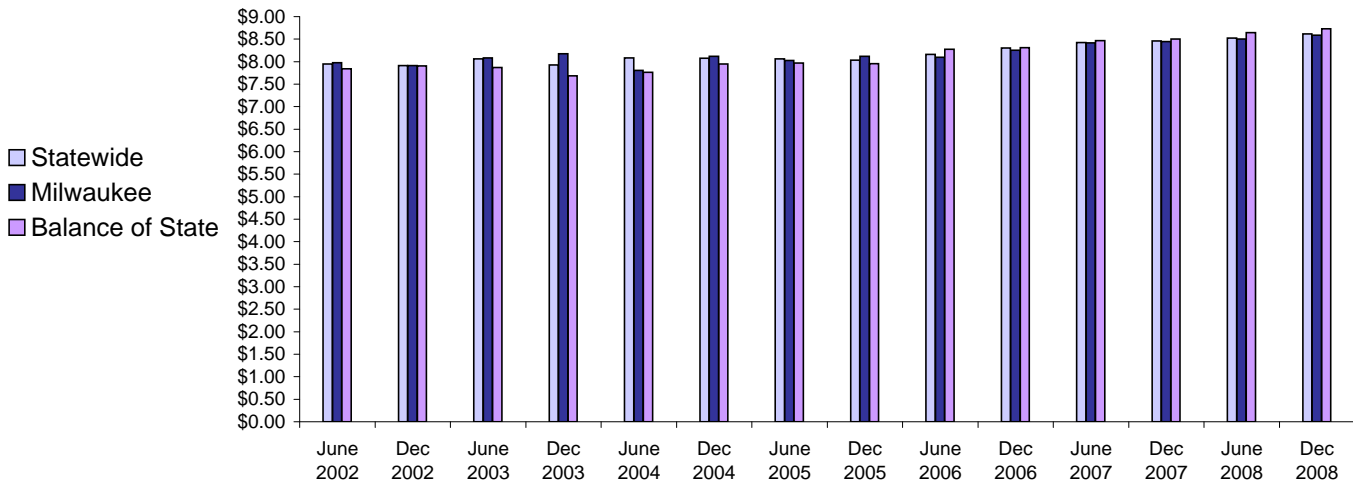
**Six Month Average Number Entered Employment\***  
June 2002-December 2008



**Total Number Of Entered Employments - Most Recent Six Months**

	Oct 2008	Nov 2008	Dec 2008	Jan 2009	Feb 2009	Mar 2009
<b>Milwaukee County</b>	257	201	196	183	174	203
<b>Balance of State</b>	85	82	37	51	70	91
<b>Statewide</b>	342	283	233	234	244	294

**Six Month Average Hourly Wage\***  
June 2002 - December 2008



**Average Hourly Wage - Most Recent Six Months**

	Oct 2008	Nov 2008	Dec 2008	Jan 2009	Feb 2009	Mar 2009
<b>Milwaukee County</b>	\$8.52	\$8.74	\$8.47	\$8.85	\$8.67	\$8.76
<b>Balance of State</b>	\$9.05	\$8.61	\$8.79	\$8.65	\$9.60	\$8.10
<b>Statewide</b>	\$8.65	\$8.70	\$8.52	\$8.81	\$8.92	\$8.67

Source: CARES, Bureau of Working Families, Division of Family and Economic Security, Department of Children & Families.

Note: Entered Employment is a W-2 program performance measure counted when a participant obtains or increases wages in a new job.

Entered Employment of less than 30 days are excluded. Wage data are reported for jobs with hourly wages

\*Average number entered employment per month for the six month period ending in June or December.