

Wisconsin Works (W-2) Critical Indicators



Bureau of Working Families
Division of Family and Economic Security
Department of Children and Families

DCF
State of Wisconsin



**February
2009**

Wisconsin W-2 Participants in Paid Placements*

Number of Participants in Paid Placements

	One Year Ago	Last Month	This Month	Change in Most Recent Two Months	
	Feb 2008	Jan 2009	Feb 2009	Number	Percent
Paid Participants:					
Milwaukee County	4,635	4,793	4,845	52	1.1%
Balance of State	1,785	2,060	2,104	44	2.1%
Statewide Caseload	6,420	6,853	6,949	96	1.4%
Milwaukee County Regions:	Feb 2008	Jan 2009	Feb 2009	Number	Percent
Milwaukee NE YWCA	516	624	608	-16	-2.6%
Milwaukee SE UMOS	755	849	876	27	3.2%
Milwaukee Central UMOS	1,237	1,326	1,311	-15	-1.1%
Milwaukee NW MAXIMUS	988	944	967	23	2.4%
Milwaukee SW MAXIMUS	719	750	798	48	6.4%
Milwaukee SSI-Adv UMOS	423	292	279	-13	-4.5%
Milwaukee County Total*:	4,635	4,793	4,845	52	1.1%

Source: CARES, Bureau of Working Families, Division of Family and Economic Security, Department of Children & Families

*Note: Milwaukee County total includes a small number of cases served by Milwaukee County Department of Social Services.

Note: The paid caseload includes the following categories of placements:

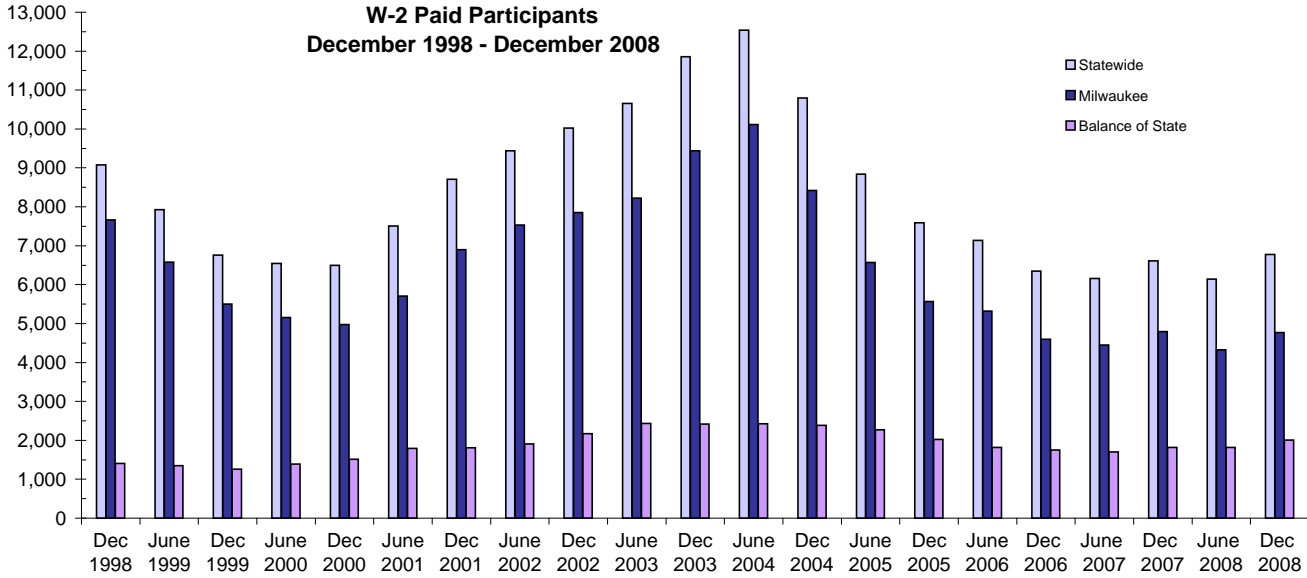
W-2 Transition (W-2T)..... A W-2 work-readiness practice placement for individuals who are unable to perform independent, self-sustaining work, but who are able to participate in work practice or other developmental activities and training up to their abilities.

Community Service Job (CSJ)..... A W-2 work-readiness practice placement designed to improve the employability of participants by providing work experience and training in the public and private sectors.

Trial Job (TJB)..... A W-2 subsidized employment position that provides work experience and training which may become permanent, unsubsidized employment. Paid directly to the employer.

Caretaker of Newborn (CMC)..... A custodial parent of a child who is 12 weeks old or less and who meets the financial and non-financial eligibility requirements for W-2 employment positions.

W-2 Paid Participants and Benefits Paid

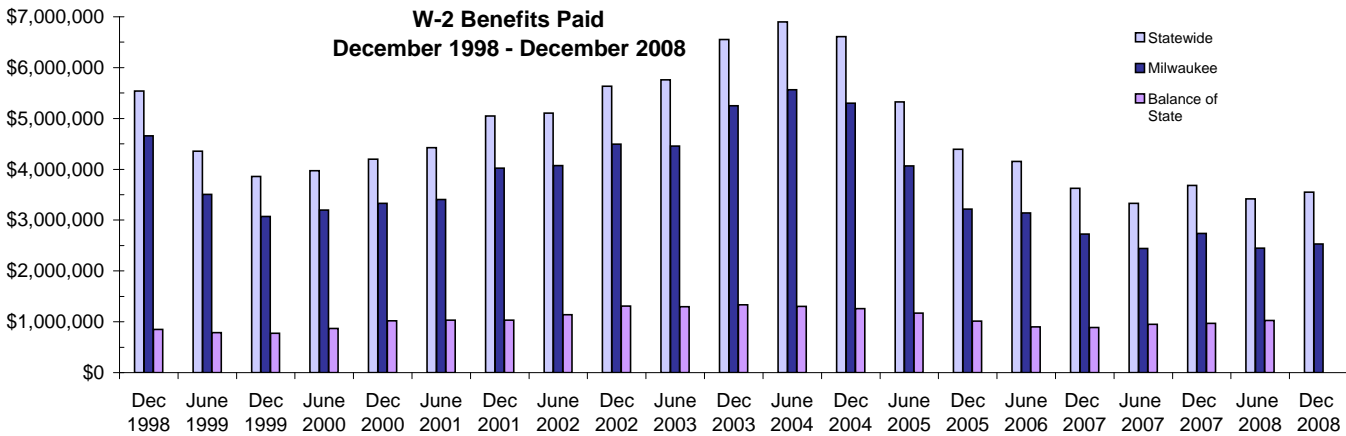


W-2 Paid Participants - Most Recent Six Months

	Sep 2008	Oct 2008	Nov 2008	Dec 2008	Jan 2009	Feb 2009
Milwaukee County	4,403	4,531	4,574	4,769	4,793	4,845
Balance of State	1,962	2,024	1,961	2,010	2,060	2,104
Statewide	6,365	6,555	6,535	6,779	6,853	6,949

Source: CARES, Bureau of Working Families, Division of Family and Economic Security, Department of Children & Families

Note: The paid participants included in this count are participants who were in a paid placement during the report month.



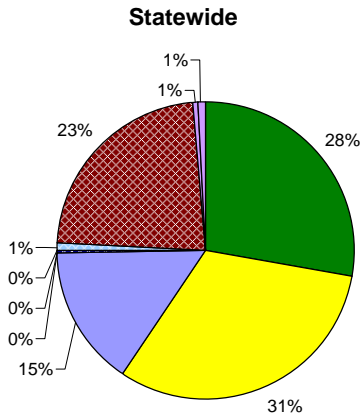
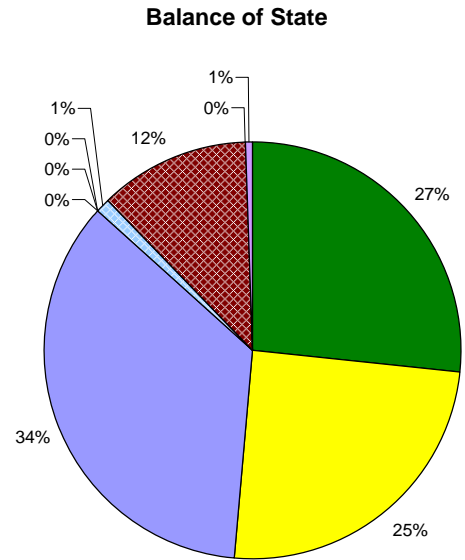
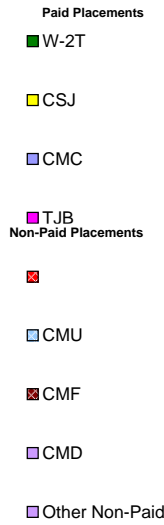
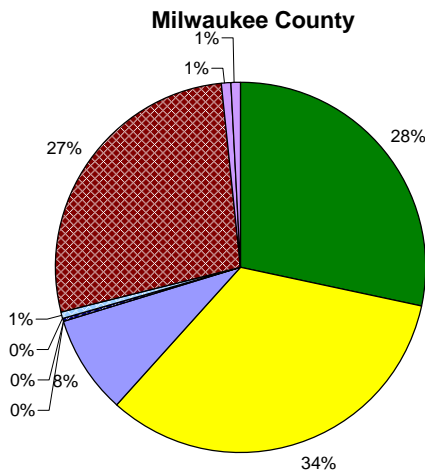
W-2 Benefits Paid - Most Recent Six Months

	Sep 2008	Oct 2008	Nov 2008	Dec 2008	Jan 2009	Feb 2009
Milwaukee County	\$2,419,707	\$2,453,688	\$2,441,698	\$2,529,398	\$2,598,664	\$2,632,886
Balance of State	\$930,980	\$991,882	\$1,011,636	\$1,023,535	\$1,013,001	\$1,033,298
Statewide	\$3,350,687	\$3,445,570	\$3,453,334	\$3,552,933	\$3,611,665	\$3,666,184

Source: CARES, Bureau of Working Families, Division of Family and Economic Security, Department of Children & Families

Note: The benefits paid are the total monthly net benefits after sanctions and recoupments are applied.

Placement of W-2 Participants, February 2009



Number and Percent of W-2 Participants in Placements

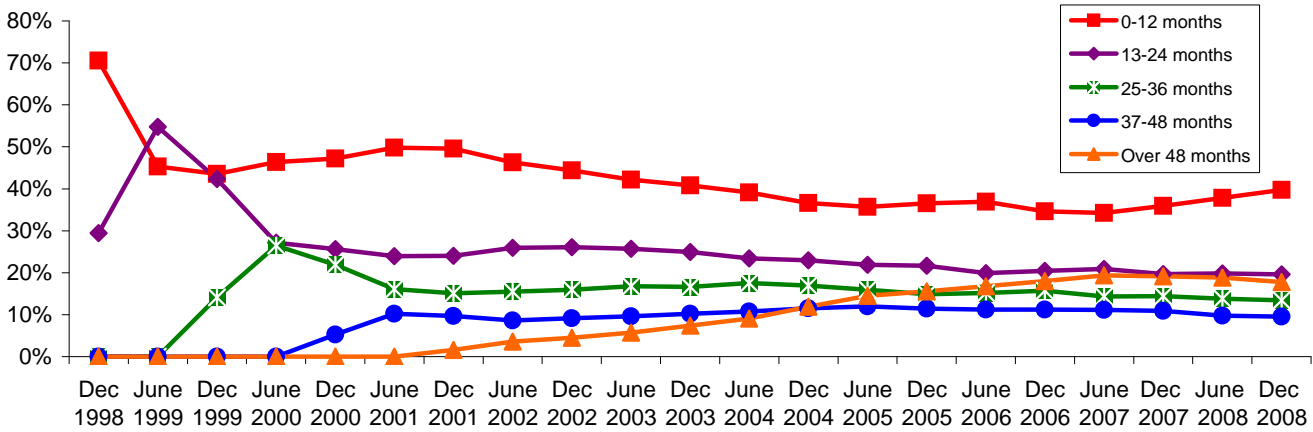
	Milwaukee County		BOS		Statewide	
	#	%	#	%	#	%
W-2T	1,933	40	633	30	2,566	37
CSJ	2,324	48	633	30	2,957	43
CMC	573	12	834	40	1,407	20
TJB	2	0	1	0	3	0
RWJ	13	0	3	0	16	0
Paid Total	4,845	100%	2,104	100%	6,949	100%
CMU	49	2	26	8	75	3
CMF	1,840	92	273	87	2,113	91
CMD	61	3	2	1	63	3
Other Non-Paid	58	3	14	4	72	3
Non-Paid Total	2,008	100%	315	100%	2,323	100%
Grand Total	6,853		2,419		9,272	

Source: CARES, Bureau of Working Families, Division of Family and Economic Security, Department of Children & Families.

- Note: W-2 Transition (W-2T)..... A W-2 work-readiness practice placement for individuals who are unable to perform independent, self-sustaining work, but who are able to participate in work practice or other developmental activities and training up to their abilities.
- Community Service Job (CSJ)..... A W-2 work-readiness practice placement designed to improve the employability of participants by providing work experience and training in the public and private sectors.
- Trial Job (TJB) and Real Work Real Pay Pilot (RWJ)..... A W-2 subsidized employment position that provides work experience and training which may become permanent, unsubsidized employment. Subsidy is paid directly to the employer.
- Case Mgmt - Caretaker of a Newborn (CMC)..... A custodial parent of a child who is 12 weeks old or less and who meets the financial and non-financial eligibility requirements for W-2 employment positions.
- Case Mgmt - Pregnancy (CMP)..... A participant with a medically verified pregnancy.
- Case Mgmt - Follow - Up (CMF)..... Used for Placement for Individuals who move from a W-2 benefit Placement to unsubsidized employment.
- Case Mgmt- Denied Extension CMD)..... Participants who exhausted time-limited benefits but are receiving services.
- Case Mgmt - Service for Working (CMU)..... Used for individuals working in unsubsidized employment who are without barriers to full-time employment.
- Case Mgmt - Non-Custodial Parent (CMN)..... Used for case management services for non-custodial parents.
- Case Mgmt - Minor Parent (CMM)..... Used for case management services for a custodial minor parent.

Number of Months Served in W-2 *

Percentage Distribution- Statewide December 1998- December 2008

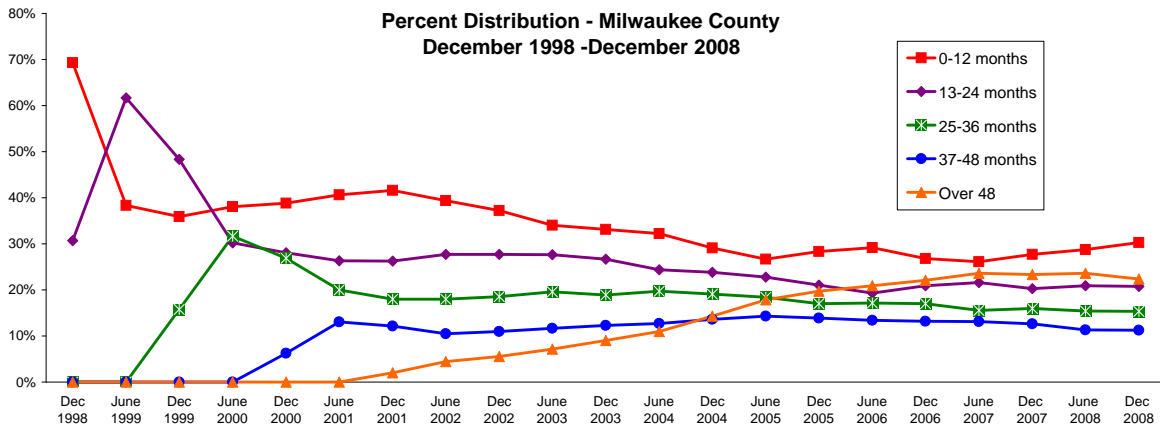


Source: CARES, Bureau of Working Families, Division of Family and Economic Security, Department of Children & Families.
 * Note: Length of stay is determined for the W-2 participants in the report month by the number of total months a participant has been in W-2 since the beginning of the program.

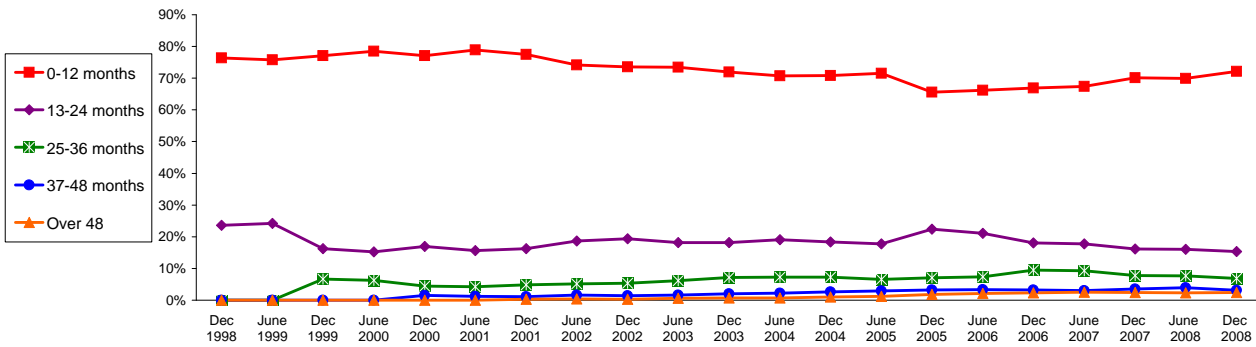
Number of Months Served in W-2 - Most Recent Six Months

	Months	Sep 2008	Oct 2008	Nov 2008	Dec 2008	Jan 2009	Feb 2009
Milwaukee County	0-12	2,018	2,090	2,081	2,144	2,178	2,214
	13-24	1,485	1,498	1,464	1,469	1,432	1,410
	25-36	1,068	1,091	1,086	1,087	1,047	1,073
	37-48	800	811	802	798	753	770
	Over 48	1,576	1,585	1,569	1,584	1,502	1,477
Balance of State	0-12	1,814	1,868	1,792	1,812	1,823	1,875
	13-24	354	364	374	386	390	394
	25-36	163	162	165	172	176	165
	37-48	85	83	86	78	78	74
	Over 48	52	55	57	62	59	64
Statewide	0-12	3,611	3,722	3,640	3,708	3,768	3,851
	13-24	1,813	1,835	1,809	1,832	1,796	1,777
	25-36	1,232	1,251	1,246	1,250	1,218	1,237
	37-48	887	901	898	888	839	851
	Over 48	1,646	1,656	1,641	1,661	1,578	1,556

Number of Months Served in W-2* , Continued



Percent Distribution - Balance of State December 1998 - December 2008

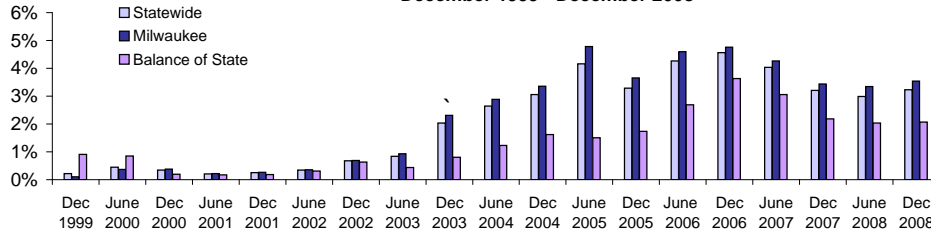


Source: CARES, Bureau of Working Families, Division of Family and Economic Security, Department of Children & Families

* Length of stay is determined for the W-2 participants in the report month by the number of total months a participant has been in W-2 since the beginning of the program. Participants may be counted more than once if their geographic location changes from Milwaukee to Balance of State or vice versa.

Extensions Granted for 24 - Month Clocks*

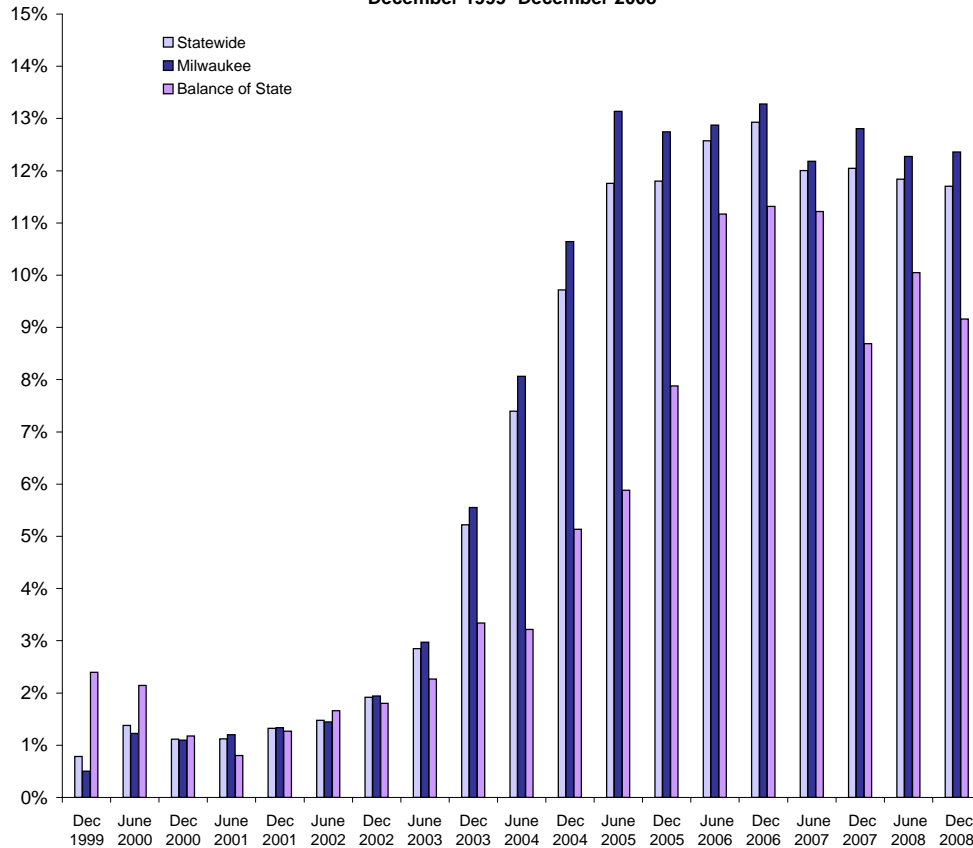
**Percent of W-2T & CSJ Participants with Beginning Extensions
December 1999 - December 2008**



Number of Beginning Extensions - Most Recent Six Months

	Sep 2008	Oct 2008	Nov 2008	Dec 2008	Jan 2009	Feb 2009
Milwaukee County	130	145	154	146	149	135
Balance of State	31	29	30	23	33	15
Statewide	161	174	184	169	182	150

**Percent of W-2T & CSJ Participants with Ongoing Extensions
December 1999 - December 2008**



Number of Ongoing Extensions - Most Recent Six Months

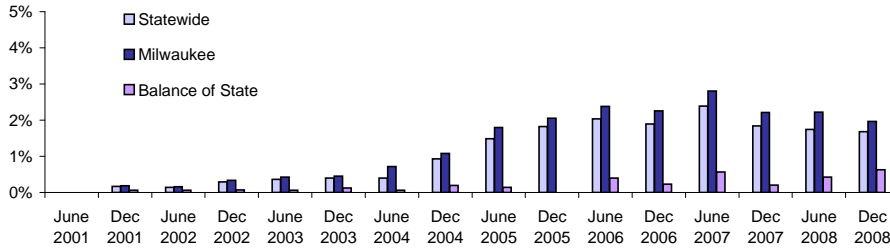
	Sep 2008	Oct 2008	Nov 2008	Dec 2008	Jan 2009	Feb 2009
Milwaukee County	459	474	476	486	492	488
Balance of State	89	96	97	93	98	92
Statewide	548	570	573	579	590	580

Source: CARES, Bureau of Working Families, Division of Family and Economic Security, Department of Children & Families.

* Extensions can be granted after 24 months of participation in a W-2T or CSJ placement. Extensions are granted when the participant is nearing the 24th month of their placement clock and they qualify for extended eligibility by meeting specific required criteria. Participants may be counted more than once if the participant's extension lasts longer than six months. Ongoing extensions are an end of the month count.

Extensions Granted for 60- Month Clocks*

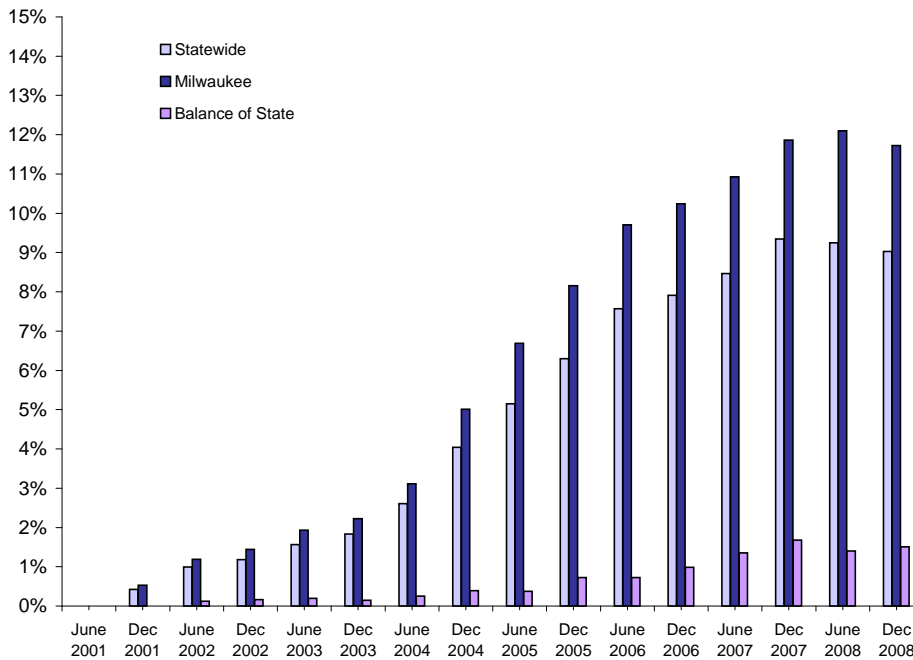
**Percent of Participants with Beginning Extensions
June 2001 - December 2008**



Number of Beginning Extensions - Most Recent Six Months

	Sep 2008	Oct 2008	Nov 2008	Dec 2008	Jan 2009	Feb 2009
Milwaukee County	99	105	95	81	86	96
Balance of State	6	6	8	7	7	7
Statewide	105	111	103	88	93	103

**Percent of Participants with Ongoing Extensions
June 2001 -December 2008**



Number of Ongoing Extensions - Most Recent Six Months

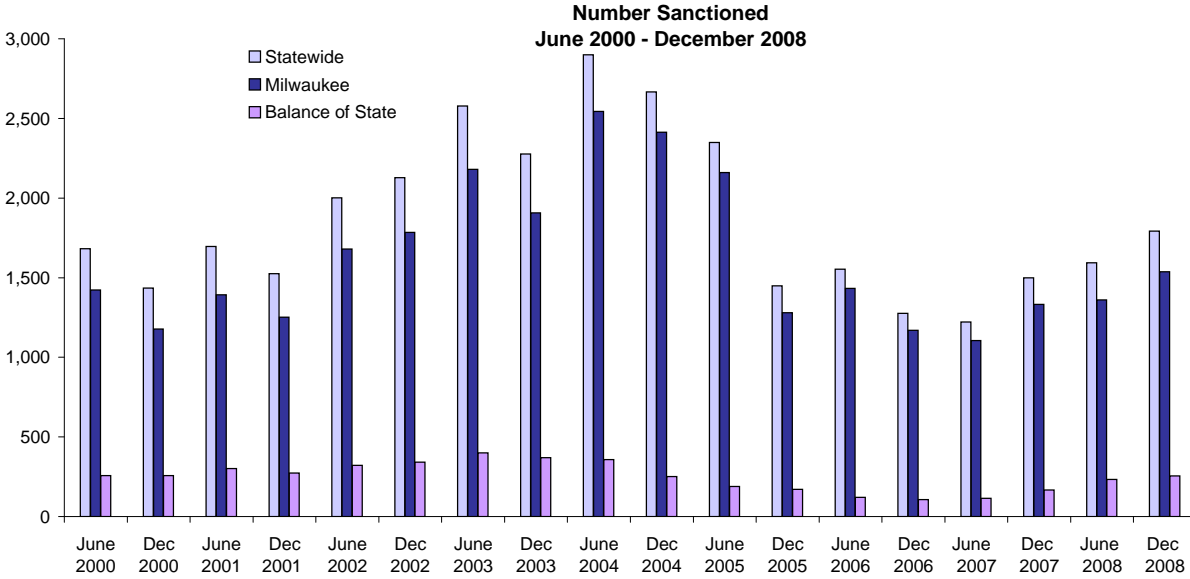
	Sep 2008	Oct 2008	Nov 2008	Dec 2008	Jan 2009	Feb 2009
Milwaukee County	505	526	533	519	508	506
Balance of State	22	22	21	24	27	28
Statewide	527	548	554	543	535	534

Source: CARES, Bureau of Working Families, Division of Family and Economic Security, Department of Children & Families.

Note: Extensions can be granted after 60 months of lifetime participation. Extensions are granted when the participant is nearing the 60th month of their lifetime clock and they qualify for extended eligibility by meeting specific required criteria. The 60- month extensions first became relevant as of September 2001.

* Participants may be counted more than once if the participant's extension lasts longer than six months. Ongoing Extensions are an end of the month count.

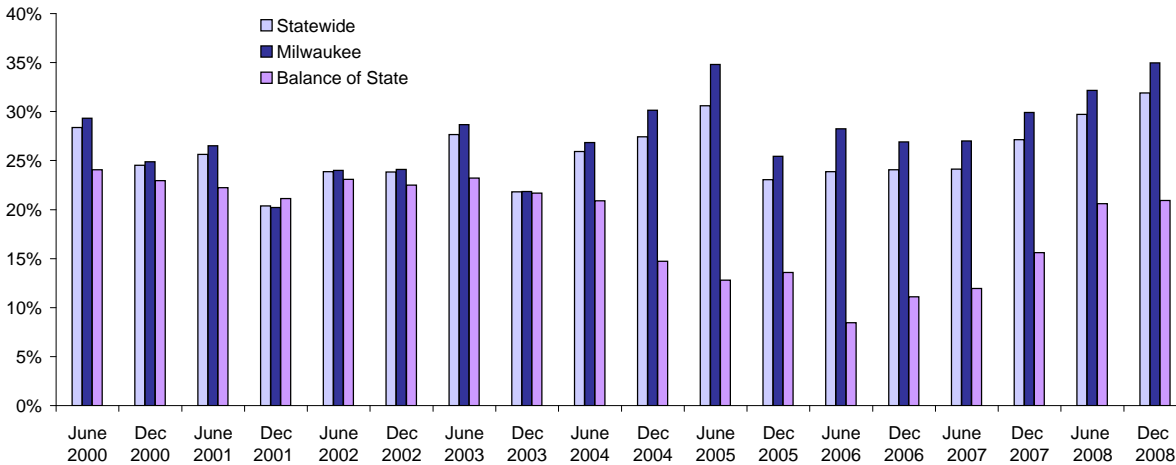
W-2T and CSJ Participants Who Were Sanctioned



Number Sanctioned - Most Recent Six Months

	Sep 2008	Oct 2008	Nov 2008	Dec 2008	Jan 2009	Feb 2009
Milwaukee County	1,357	1,433	1,470	1,537	1,597	1,715
Balance of State	220	222	258	256	286	342
Statewide	1,577	1,655	1,728	1,793	1,883	2,057

Percent Sanctioned June 2000 - December 2008



Percent Sanctioned - Most Recent Six Months

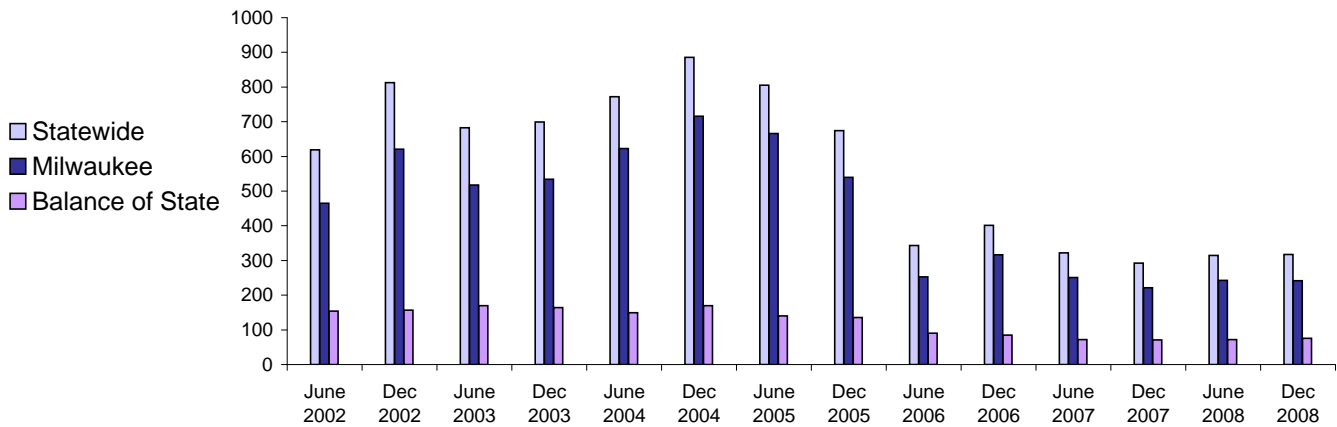
	Sep 2008	Oct 2008	Nov 2008	Dec 2008	Jan 2009	Feb 2009
Milwaukee County	32%	34%	34%	35%	36%	38%
Balance of State	20%	19%	22%	21%	22%	25%
Statewide	30%	30%	31%	32%	33%	35%

Source: CARES, Bureau of Working Families, Division of Family and Economic Security, Department of Children & Families.

Note: Because sanction counts prior to September 1999 were counted differently they are not included in these graphs. The graphs on this page report information on the sanctionable population (W-2T and CSJ placements only). The data represented here are point in time during a month.

Entered Employments of W-2 Participants

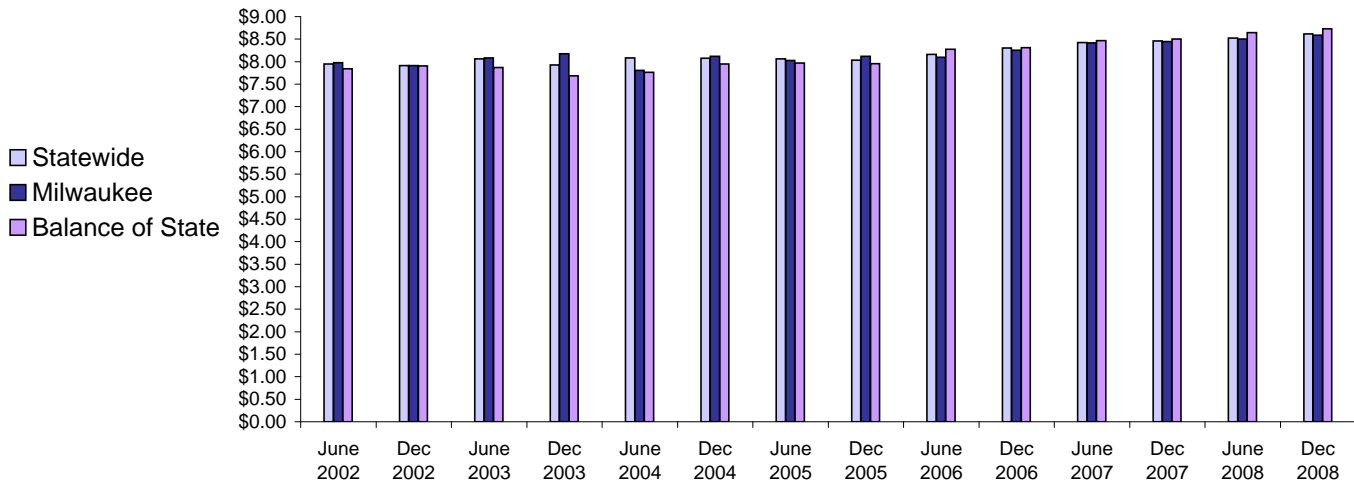
Six Month Average Number Entered Employment*
June 2002-December 2008



Total Number Of Entered Employments - Most Recent Six Months

	Sep 2008	Oct 2008	Nov 2008	Dec 2008	Jan 2009	Feb 2009
Milwaukee County	302	257	201	196	183	174
Balance of State	93	85	82	37	51	70
Statewide	395	342	283	233	234	244

Six Month Average Hourly Wage*
June 2002 - December 2008



Average Hourly Wage - Most Recent Six Months

	Sep 2008	Oct 2008	Nov 2008	Dec 2008	Jan 2009	Feb 2009
Milwaukee County	\$8.66	\$8.52	\$8.74	\$8.47	\$8.85	\$8.67
Balance of State	\$8.47	\$9.05	\$8.61	\$8.79	\$8.65	\$9.60
Statewide	\$8.61	\$8.65	\$8.70	\$8.52	\$8.81	\$8.92

Source: CARES, Bureau of Working Families, Division of Family and Economic Security, Department of Children & Families.

Note: Entered Employment is a W-2 program performance measure counted when a participant obtains or increases wages in a new job.

Entered Employment of less than 30 days are excluded. Wage data are reported for jobs with hourly wages

*Average number entered employment per month for the six month period ending in June or December.