

Wisconsin Works (W-2) Critical Indicators



Bureau of Working Families
Division of Family and Economic Security
Department of Children and Families

DCF
State of Wisconsin



**December
2008**

Wisconsin W-2 Participants in Paid Placements*

Number of Participants in Paid Placements

	One Year Ago	Last Month	This Month	Change in Most Recent Two Months	
	Dec 2007	Nov 2008	Dec 2008	Number	Percent
Paid Participants:					
Milwaukee County	4,791	4,574	4,769	195	4.3%
Balance of State	1,816	1,961	2,010	49	2.5%
Statewide Caseload	6,607	6,535	6,779	244	3.7%
Milwaukee County Regions:	Dec 2007	Nov 2008	Dec 2008	Number	Percent
Milwaukee NE YWCA	560	600	614	14	2.3%
Milwaukee SE UMOS	800	796	841	45	5.7%
Milwaukee Central UMOS	1,264	1,268	1,336	68	5.4%
Milwaukee NW MAXIMUS	1,028	893	932	39	4.4%
Milwaukee SW MAXIMUS	717	695	734	39	5.6%
Milwaukee SSI-Adv UMOS	422	317	306	-11	-3.5%
Milwaukee County Total*:	4,791	4,574	4,769	195	4.3%

Source: CARES, Bureau of Working Families, Division of Family and Economic Security, Department of Children & Families

*Note: Milwaukee County total includes a small number of cases served by Milwaukee County Department of Social Services.

Note: The paid caseload includes the following categories of placements:

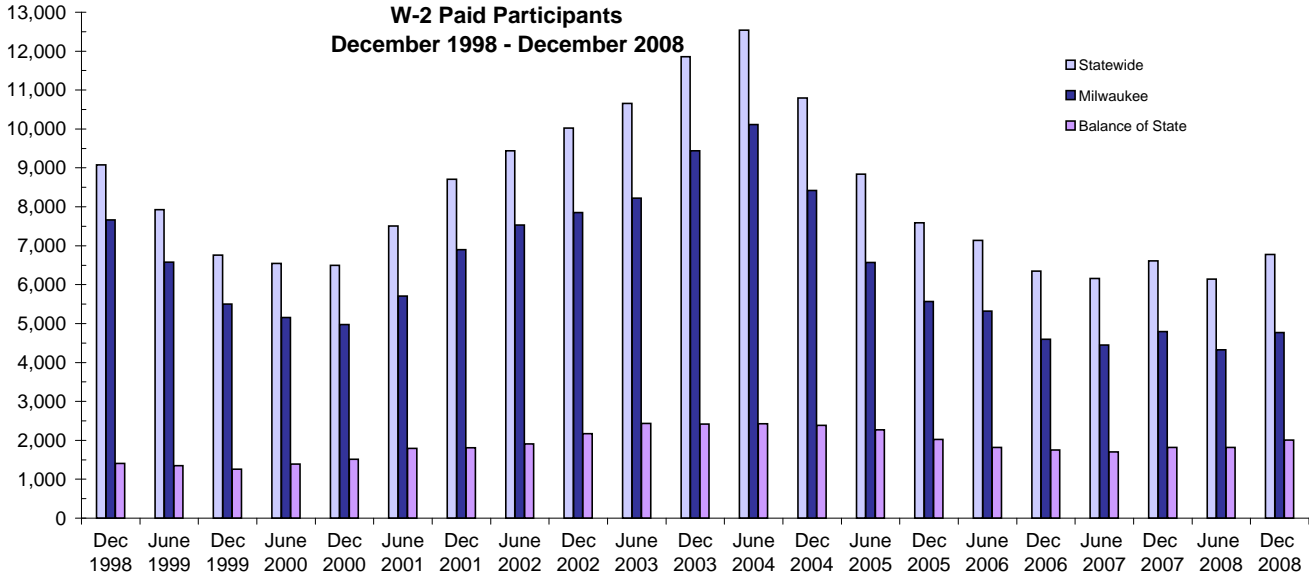
W-2 Transition (W-2T)..... A W-2 work-readiness practice placement for individuals who are unable to perform independent, self-sustaining work, but who are able to participate in work practice or other developmental activities and training up to their abilities.

Community Service Job (CSJ)..... A W-2 work-readiness practice placement designed to improve the employability of participants by providing work experience and training in the public and private sectors.

Trial Job (TJB)..... A W-2 subsidized employment position that provides work experience and training which may become permanent, unsubsidized employment. Paid directly to the employer.

Caretaker of Newborn (CMC)..... A custodial parent of a child who is 12 weeks old or less and who meets the financial and non-financial eligibility requirements for W-2 employment positions.

W-2 Paid Participants and Benefits Paid

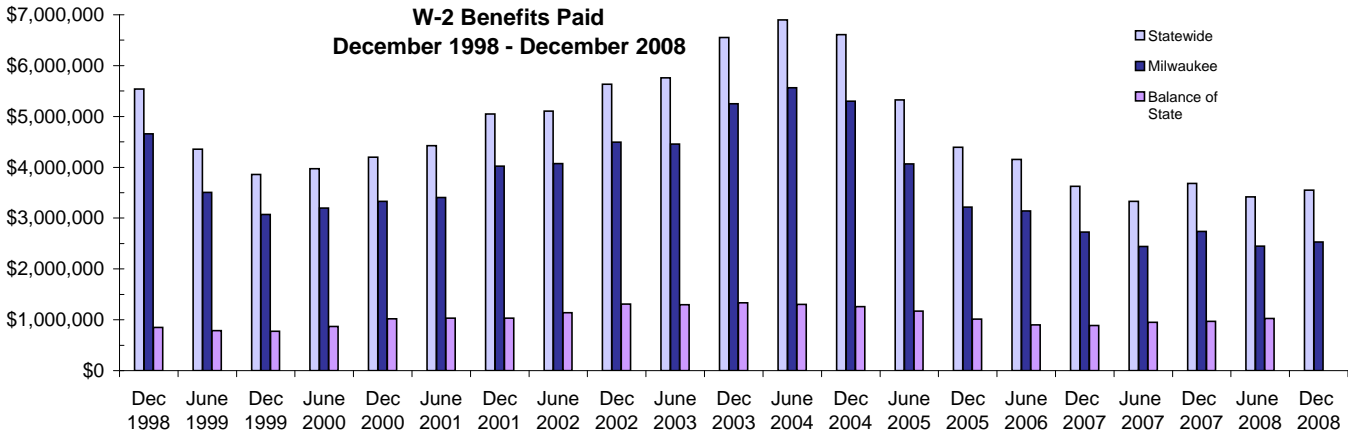


W-2 Paid Participants - Most Recent Six Months

	Jul 2008	Aug 2008	Sep 2008	Oct 2008	Nov 2008	Dec 2008
Milwaukee County	4,363	4,375	4,403	4,531	4,574	4,769
Balance of State	1,838	1,875	1,962	2,024	1,961	2,010
Statewide	6,201	6,250	6,365	6,555	6,535	6,779

Source: CARES, Bureau of Working Families, Division of Family and Economic Security, Department of Children & Families

Note: The paid participants included in this count are participants who were in a paid placement during the report month.



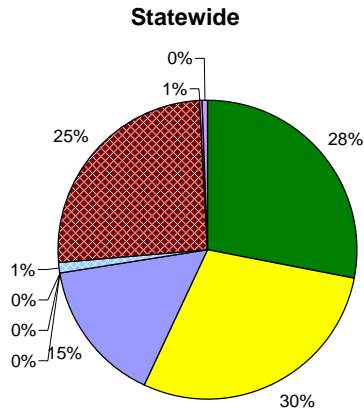
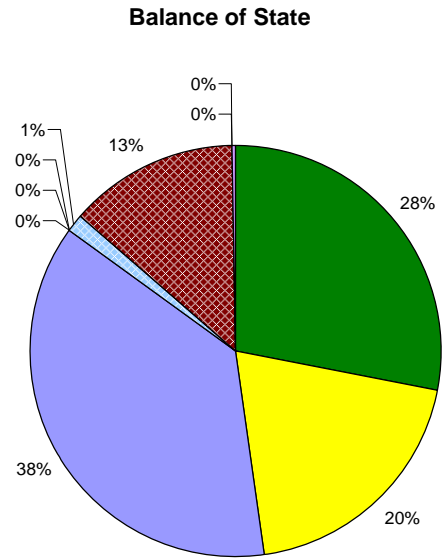
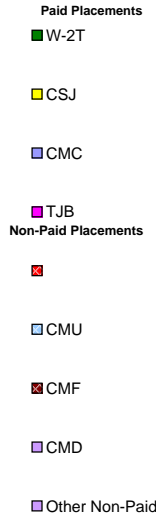
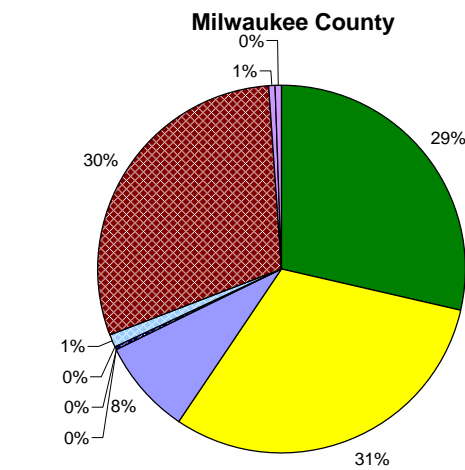
W-2 Benefits Paid - Most Recent Six Months

	Jul 2008	Aug 2008	Sep 2008	Oct 2008	Nov 2008	Dec 2008
Milwaukee County	\$2,455,194	\$2,364,967	\$2,419,707	\$2,453,688	\$2,441,698	\$2,529,398
Balance of State	\$927,421	\$921,769	\$930,980	\$991,882	\$1,011,636	\$1,023,535
Statewide	\$3,382,615	\$3,286,736	\$3,350,687	\$3,445,570	\$3,453,334	\$3,552,933

Source: CARES, Bureau of Working Families, Division of Family and Economic Security, Department of Children & Families

Note: The benefits paid are the total monthly net benefits after sanctions and recoupments are applied.

Placement of W-2 Participants, December 2008



Number and Percent of W-2 Participants in Placements

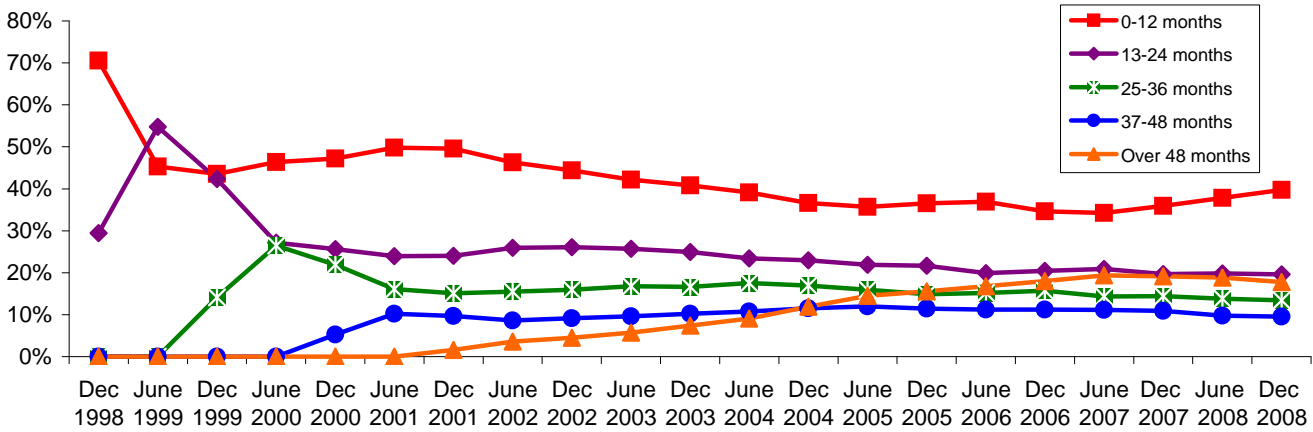
	Milwaukee County		BOS		Statewide	
	#	%	#	%	#	%
W-2T	1,976	41	647	32	2,623	39
CSJ	2,206	46	501	25	2,707	40
CMC	575	12	861	43	1,436	21
TJB	1	0	0	0	1	0
RWJ	11	15	1	0	12	0
Paid Total	4,769	100%	2,010	100%	6,779	100%
CMU	71	3	29	8	100	4
CMF	2,063	93	308	89	2,371	93
CMD	48	2	0	0	48	2
Other Non-Paid	33	1	8	2	41	2
Non-Paid Total	2,215	100%	345	100%	2,560	100%
Grand Total	6,984		2,355		9,339	

Source: CARES, Bureau of Working Families, Division of Family and Economic Security, Department of Children & Families.

- Note: W-2 Transition (W-2T)..... A W-2 work-readiness practice placement for individuals who are unable to perform independent, self-sustaining work, but who are able to participate in work practice or other developmental activities and training up to their abilities.
- Community Service Job (CSJ)..... A W-2 work-readiness practice placement designed to improve the employability of participants by providing work experience and training in the public and private sectors.
- Trial Job (TJB) and Real Work Real Pay Pilot (RWJ)..... A W-2 subsidized employment position that provides work experience and training which may become permanent, unsubsidized employment. Subsidy is paid directly to the employer.
- Case Mgmt - Caretaker of a Newborn (CMC)..... A custodial parent of a child who is 12 weeks old or less and who meets the financial and non-financial eligibility requirements for W-2 employment positions.
- Case Mgmt - Pregnancy (CMP)..... A participant with a medically verified pregnancy.
- Case Mgmt - Follow - Up (CMF)..... Used for Placement for Individuals who move from a W-2 benefit Placement to unsubsidized employment.
- Case Mgmt- Denied Extension CMD)..... Participants who exhausted time-limited benefits but are receiving services.
- Case Mgmt - Service for Working (CMU)..... Used for individuals working in unsubsidized employment who are without barriers to full-time employment.
- Case Mgmt - Non-Custodial Parent (CMN)..... Used for case management services for non-custodial parents.
- Case Mgmt - Minor Parent (CMM)..... Used for case management services for a custodial minor parent.

Number of Months Served in W-2 *

Percentage Distribution- Statewide December 1998- December 2008

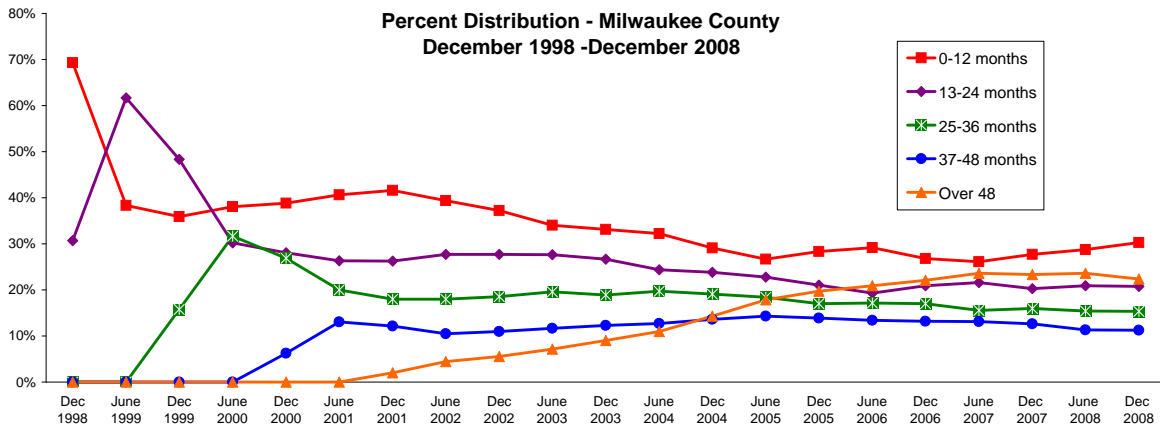


Source: CARES, Bureau of Working Families, Division of Family and Economic Security, Department of Children & Families.
 * Note: Length of stay is determined for the W-2 participants in the report month by the number of total months a participant has been in W-2 since the beginning of the program.

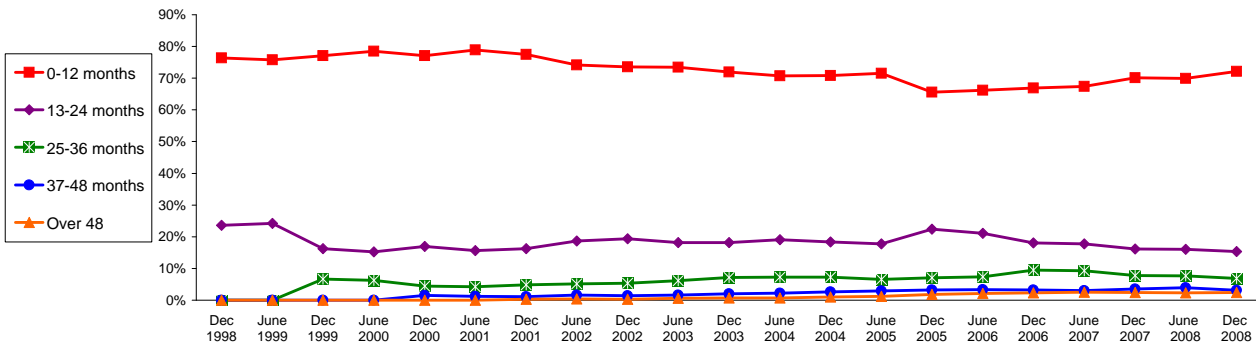
Number of Months Served in W-2 - Most Recent Six Months

	Months	Jul 2008	Aug 2008	Sep 2008	Oct 2008	Nov 2008	Dec 2008
Milwaukee County	0-12	1,989	1,998	2,018	2,090	2,081	2,144
	13-24	1,452	1,457	1,485	1,498	1,464	1,469
	25-36	1,057	1,019	1,068	1,091	1,086	1,087
	37-48	804	793	800	811	802	798
	Over 48	1,646	1,558	1,576	1,585	1,569	1,584
Balance of State	0-12	1,678	1,710	1,814	1,868	1,792	1,812
	13-24	364	363	354	364	374	386
	25-36	170	158	163	162	165	172
	37-48	81	89	85	83	86	78
	Over 48	51	51	52	55	57	62
Statewide	0-12	3,453	3,493	3,611	3,722	3,640	3,708
	13-24	1,789	1,791	1,813	1,835	1,809	1,832
	25-36	1,229	1,180	1,232	1,251	1,246	1,250
	37-48	889	885	887	901	898	888
	Over 48	1,713	1,626	1,646	1,656	1,641	1,661

Number of Months Served in W-2* , Continued



**Percent Distribution - Balance of State
December 1998 - December 2008**

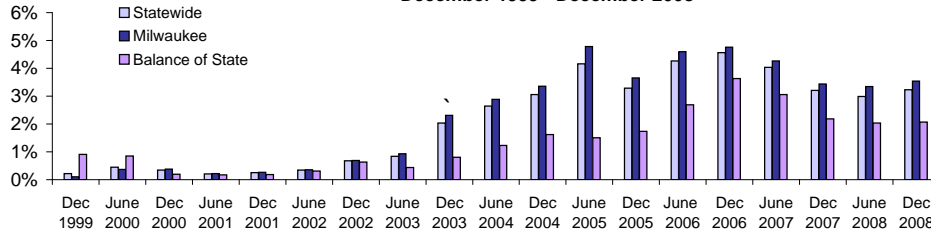


Source: CARES, Bureau of Working Families, Division of Family and Economic Security, Department of Children & Families

* Length of stay is determined for the W-2 participants in the report month by the number of total months a participant has been in W-2 since the beginning of the program. Participants may be counted more than once if their geographic location changes from Milwaukee to Balance of State or vice versa.

Extensions Granted for 24 - Month Clocks*

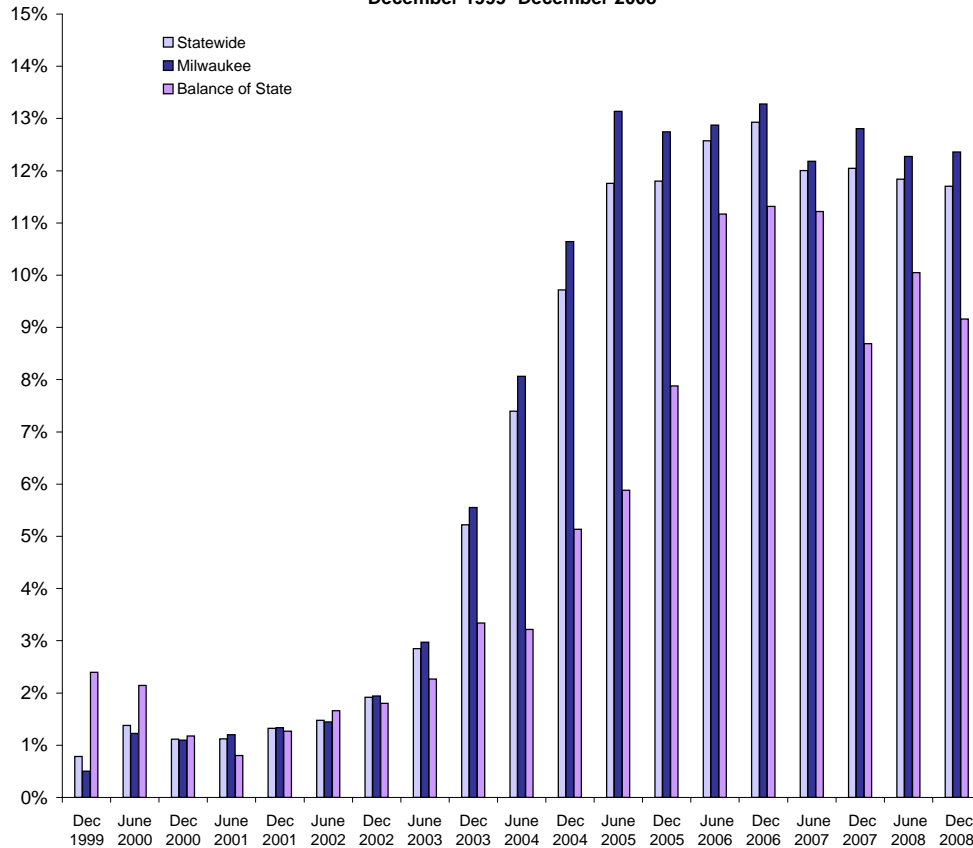
**Percent of W-2T & CSJ Participants with Beginning Extensions
December 1999 - December 2008**



Number of Beginning Extensions - Most Recent Six Months

	Jul 2008	Aug 2008	Sep 2008	Oct 2008	Nov 2008	Dec 2008
Milwaukee County	148	145	130	145	154	146
Balance of State	19	21	31	29	30	23
Statewide	167	166	161	174	184	169

**Percent of W-2T & CSJ Participants with Ongoing Extensions
December 1999 - December 2008**



Number of Ongoing Extensions - Most Recent Six Months

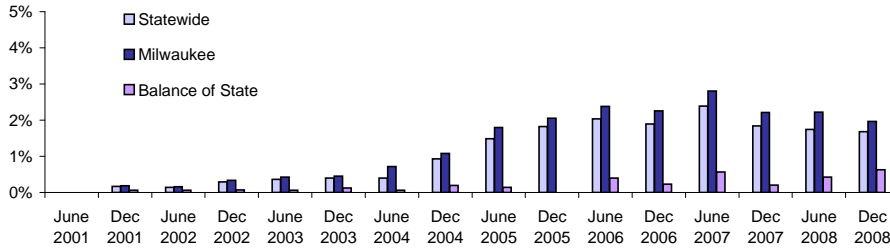
	Jul 2008	Aug 2008	Sep 2008	Oct 2008	Nov 2008	Dec 2008
Milwaukee County	452	432	459	474	476	486
Balance of State	83	77	89	96	97	93
Statewide	535	509	548	570	573	579

Source: CARES, Bureau of Working Families, Division of Family and Economic Security, Department of Children & Families.

* Extensions can be granted after 24 months of participation in a W-2T or CSJ placement. Extensions are granted when the participant is nearing the 24th month of their placement clock and they qualify for extended eligibility by meeting specific required criteria. Participants may be counted more than once if the participant's extension lasts longer than six months. Ongoing extensions are an end of the month count.

Extensions Granted for 60- Month Clocks*

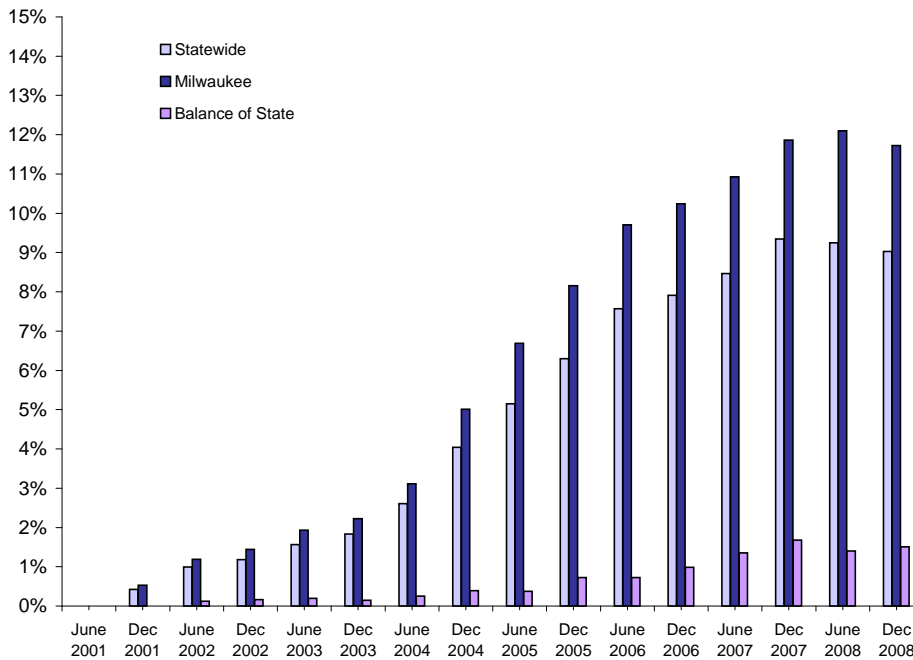
**Percent of Participants with Beginning Extensions
June 2001 - December 2008**



Number of Beginning Extensions - Most Recent Six Months

	Jul 2008	Aug 2008	Sep 2008	Oct 2008	Nov 2008	Dec 2008
Milwaukee County	92	104	99	105	95	81
Balance of State	3	6	6	6	8	7
Statewide	95	110	105	111	103	88

**Percent of Participants with Ongoing Extensions
June 2001 -December 2008**



Number of Ongoing Extensions - Most Recent Six Months

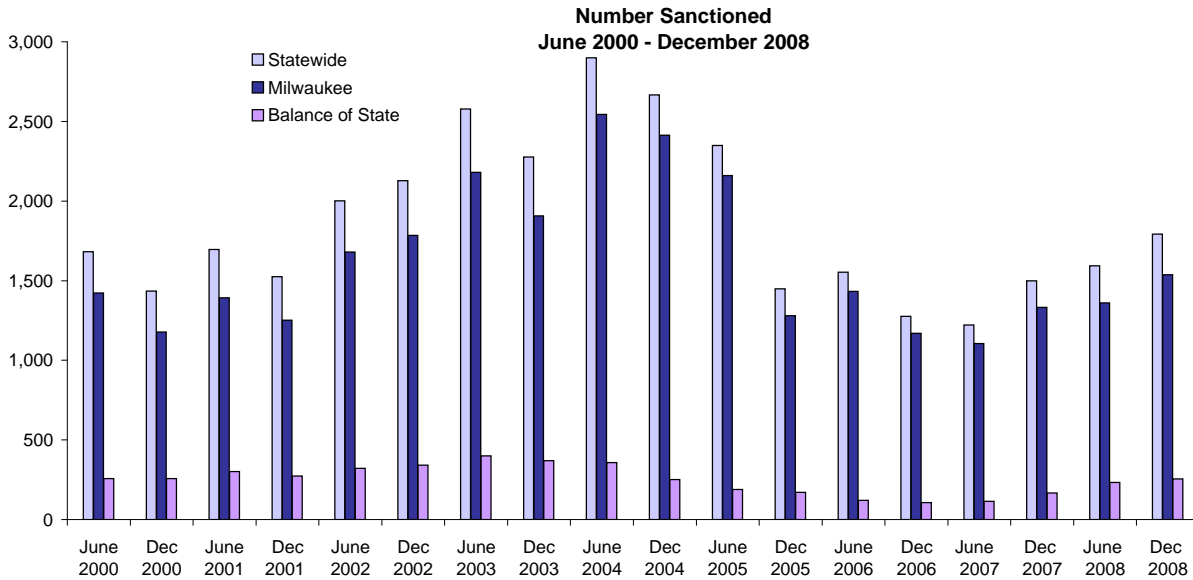
	Jul 2008	Aug 2008	Sep 2008	Oct 2008	Nov 2008	Dec 2008
Milwaukee County	461	469	505	526	533	519
Balance of State	22	24	22	22	21	24
Statewide	483	493	527	548	554	543

Source: CARES, Bureau of Working Families, Division of Family and Economic Security, Department of Children & Families.

Note: Extensions can be granted after 60 months of lifetime participation. Extensions are granted when the participant is nearing the 60th month of their lifetime clock and they qualify for extended eligibility by meeting specific required criteria. The 60- month extensions first became relevant as of September 2001.

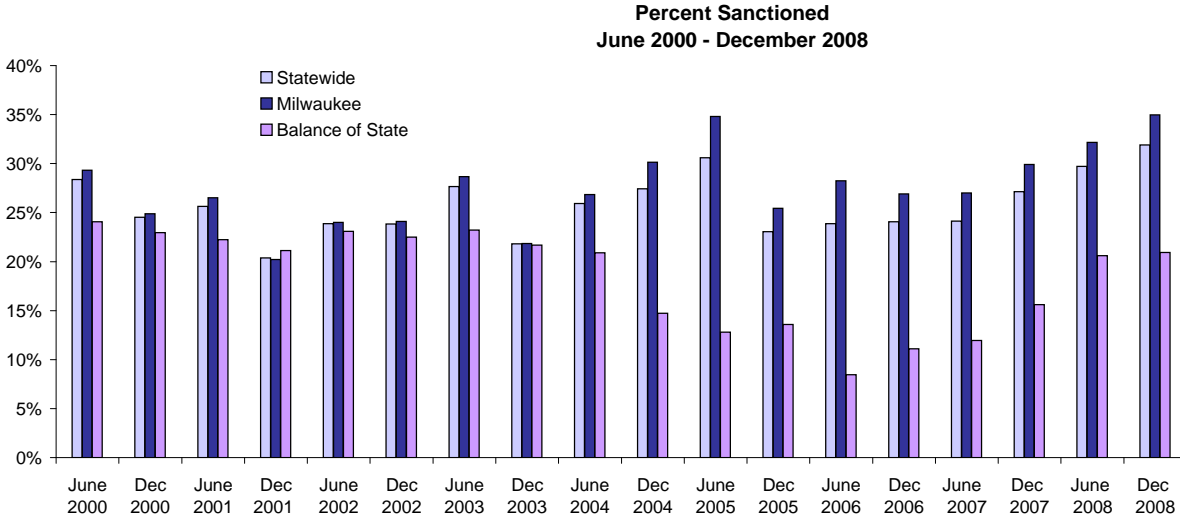
* Participants may be counted more than once if the participant's extension lasts longer than six months. Ongoing Extensions are an end of the month count.

W-2T and CSJ Participants Who Were Sanctioned



Number Sanctioned - Most Recent Six Months

	Jul 2008	Aug 2008	Sep 2008	Oct 2008	Nov 2008	Dec 2008
Milwaukee County	1,415	1,367	1,357	1,433	1,470	1,537
Balance of State	249	239	220	222	258	256
Statewide	1,664	1,606	1,577	1,655	1,728	1,793



Percent Sanctioned - Most Recent Six Months

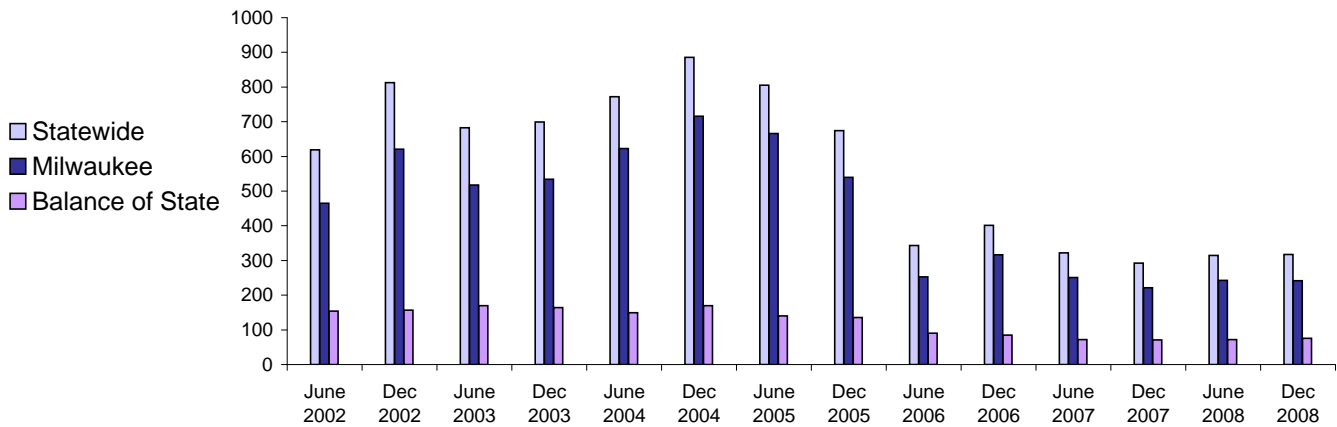
	Jul 2008	Aug 2008	Sep 2008	Oct 2008	Nov 2008	Dec 2008
Milwaukee County	33%	33%	32%	34%	34%	35%
Balance of State	22%	22%	20%	19%	22%	21%
Statewide	31%	30%	30%	30%	31%	32%

Source: CARES, Bureau of Working Families, Division of Family and Economic Security, Department of Children & Families.

Note: Because sanction counts prior to September 1999 were counted differently they are not included in these graphs. The graphs on this page report information on the sanctionable population (W-2T and CSJ placements only). The data represented here are point in time during a month.

Entered Employments of W-2 Participants

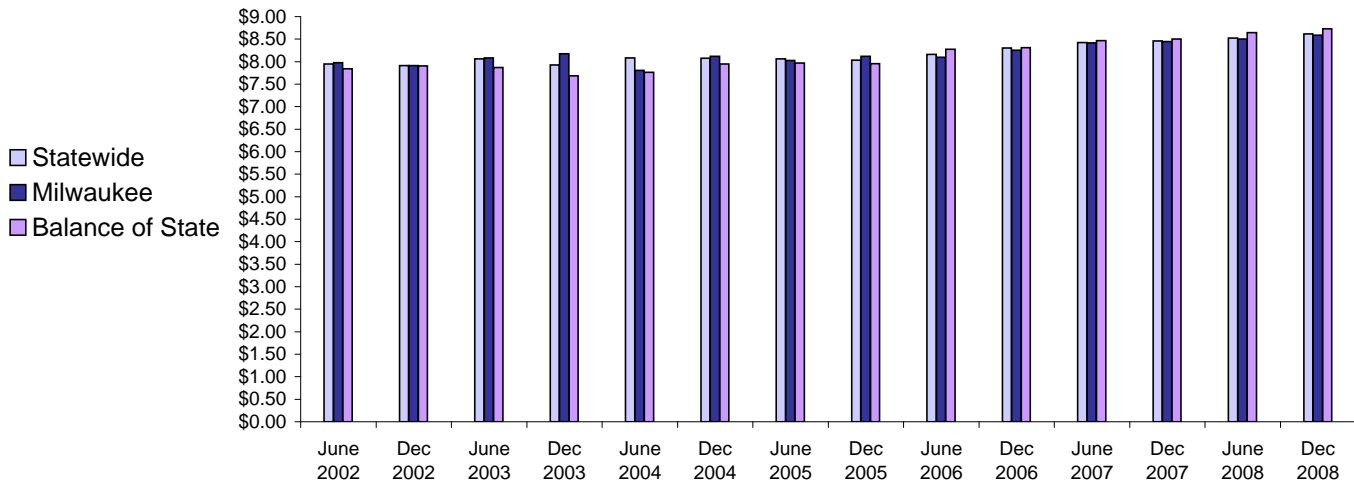
Six Month Average Number Entered Employment*
June 2002-December 2008



Total Number Of Entered Employments - Most Recent Six Months

	Jul 2008	Aug 2008	Sep 2008	Oct 2008	Nov 2008	Dec 2008
Milwaukee County	228	265	302	257	201	196
Balance of State	88	71	93	85	82	37
Statewide	316	336	395	342	283	233

Six Month Average Hourly Wage*
June 2002 - December 2008



Average Hourly Wage - Most Recent Six Months

	Jul 2008	Aug 2008	Sep 2008	Oct 2008	Nov 2008	Dec 2008
Milwaukee County	\$8.55	\$8.59	\$8.66	\$8.52	\$8.74	\$8.47
Balance of State	\$8.84	\$8.62	\$8.47	\$9.05	\$8.61	\$8.79
Statewide	\$8.63	\$8.59	\$8.61	\$8.65	\$8.70	\$8.52

Source: CARES, Bureau of Working Families, Division of Family and Economic Security, Department of Children & Families.

Note: Entered Employment is a W-2 program performance measure counted when a participant obtains or increases wages in a new job.

Entered Employment of less than 30 days are excluded. Wage data are reported for jobs with hourly wages

*Average number entered employment per month for the six month period ending in June or December.