

Wisconsin Works (W-2) Critical Indicators



August
2008

Bureau of Working Families
Division of Family and Economic Security
Department of Children and Families
State of Wisconsin

Wisconsin W-2 Participants in Paid Placements*

Number of Participants in Paid Placements

	One Year Ago	Last Month	This Month	Change in Most Recent Two Months	
	Aug 2007	Jul 2008	Aug 2008	Number	Percent
Paid Participants:					
Milwaukee County	4,720	4,363	4,375	12	0.3%
Balance of State	1,858	1,837	1,875	38	2.1%
Statewide Caseload	6,578	6,200	6,250	50	0.8%
Milwaukee County Regions:	Aug 2007	Jul 2008	Aug 2008	Number	Percent
Milwaukee NE YWCA	564	506	515	9	1.8%
Milwaukee SE UMOS	744	720	720	0	0.0%
Milwaukee Central UMOS	1,185	1,313	1,307	-6	-0.5%
Milwaukee NW MAXIMUS	1,063	831	821	-10	-1.2%
Milwaukee SW MAXIMUS	753	617	659	42	6.8%
Milwaukee SSI-Adv UMOS	411	374	352	-22	-5.9%
Milwaukee County Total*:	4,720	4,363	4,375	12	0.3%

Source: CARES, Bureau of Working Families, Division of Family and Economic Security, Department of Children & Families

*Note: Milwaukee County total includes a small number of cases served by Milwaukee County Department of Social Services.

Note: The paid caseload includes the following categories of placements:

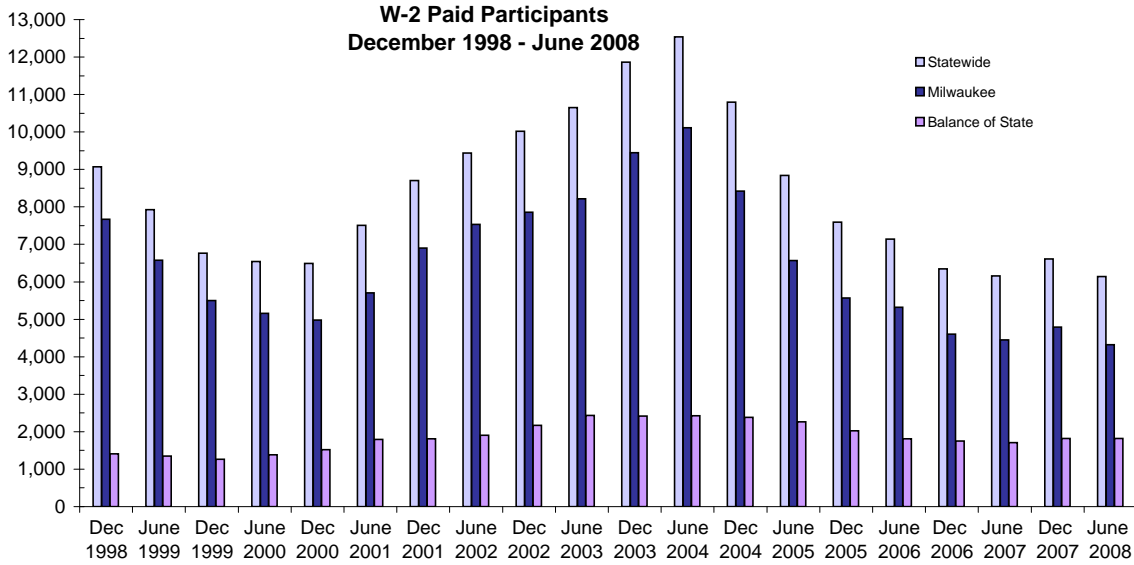
W-2 Transition (W-2T)..... A W-2 work-readiness practice placement for individuals who are unable to perform independent, self-sustaining work, but who are able to participate in work practice or other developmental activities and training up to their abilities.

Community Service Job (CSJ)..... A W-2 work-readiness practice placement designed to improve the employability of participants by providing work experience and training in the public and private sectors.

Trial Job (TJB)..... A W-2 subsidized employment position that provides work experience and training which may become permanent, unsubsidized employment. Paid directly to the employer.

Caretaker of Newborn (CMC)..... A custodial parent of a child who is 12 weeks old or less and who meets the financial and non-financial eligibility requirements for W-2 employment positions.

W-2 Paid Participants and Benefits Paid

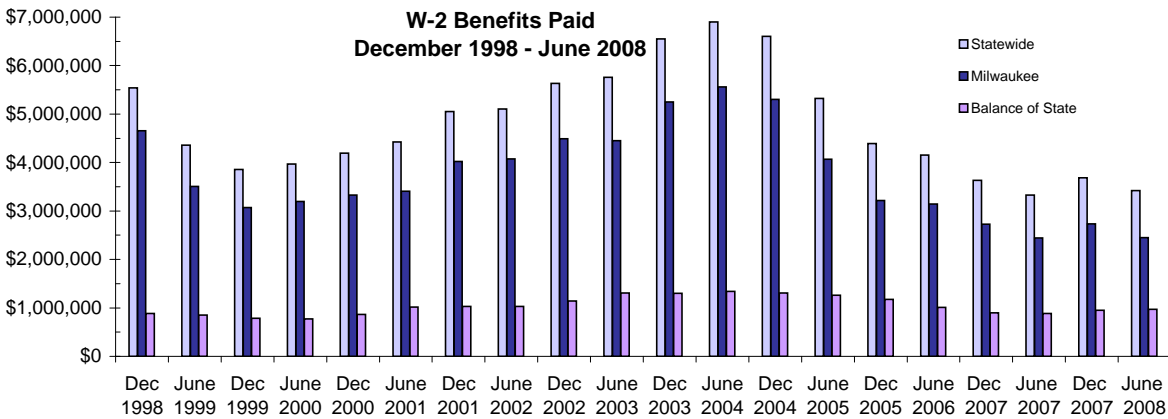


W-2 Paid Participants - Most Recent Six Months

	Mar 2008	Apr 2008	May 2008	Jun 2008	Jul 2008	Aug 2008
Milwaukee County	4,541	4,454	4,402	4,323	4,363	4,375
Balance of State	1,832	1,876	1,845	1,817	1,838	1,875
Statewide	6,373	6,330	6,247	6,140	6,201	6,250

Source: CARES, Bureau of Working Families, Division of Family and Economic Security, Department of Children & Families

Note: The paid participants included in this count are participants who were in a paid placement during the report month.



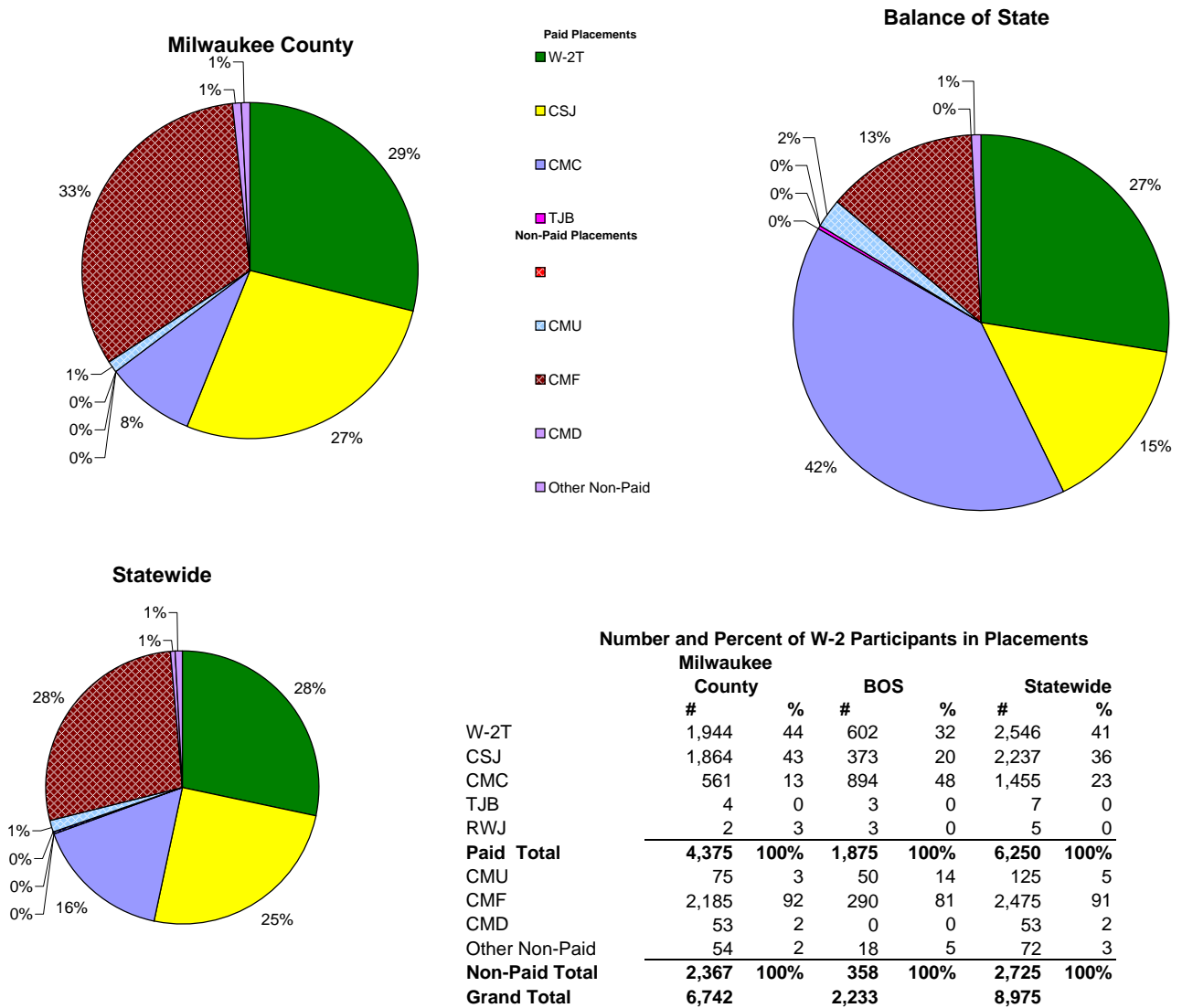
W-2 Benefits Paid - Most Recent Six Months

	Mar 2008	Apr 2008	May 2008	Jun 2008	Jul 2008	Aug 2008
Milwaukee County	\$2,518,869	\$2,520,025	\$2,451,958	\$2,449,887	\$2,455,194	\$2,364,967
Balance of State	\$926,345	\$929,426	\$955,522	\$970,324	\$927,421	\$921,769
Statewide	\$3,445,214	\$3,449,451	\$3,407,480	\$3,420,211	\$3,382,615	\$3,286,736

Source: CARES, Bureau of Working Families, Division of Family and Economic Security, Department of Children & Families

Note: The benefits paid are the total monthly net benefits after sanctions and recoupments are applied.

Placement of W-2 Participants, August 2008

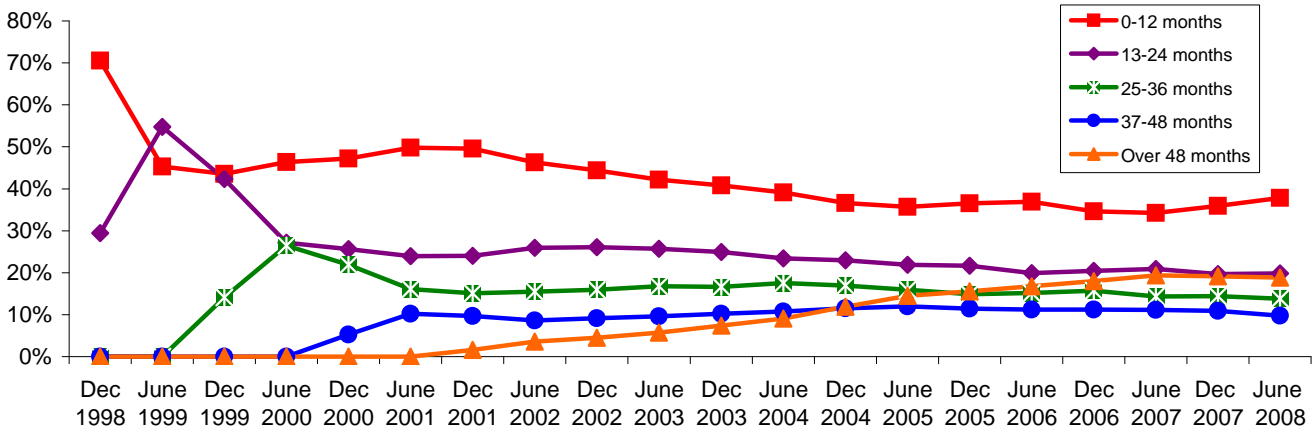


Source: CARES, Bureau of Working Families, Division of Family and Economic Security, Department of Children & Families.

- Note: W-2 Transition (W-2T)..... A W-2 work-readiness practice placement for individuals who are unable to perform independent, self-sustaining work, but who are able to participate in work practice or other developmental activities and training up to their abilities.
- Community Service Job (CSJ)..... A W-2 work-readiness practice placement designed to improve the employability of participants by providing work experience and training in the public and private sectors.
- Trial Job (TJB) and Real Work Real Pay Pilot (RWJ)..... A W-2 subsidized employment position that provides work experience and training which may become permanent, unsubsidized employment. Subsidy is paid directly to the employer.
- Case Mgmt - Caretaker of a Newborn (CMC)..... A custodial parent of a child who is 12 weeks old or less and who meets the financial and non-financial eligibility requirements for W-2 employment positions.
- Case Mgmt - Pregnancy (CMP)..... A participant with a medically verified pregnancy.
- Case Mgmt - Follow - Up (CMF)..... Used for Placement for Individuals who move from a W-2 benefit Placement to unsubsidized employment.
- Case Mgmt- Denied Extension CMD)..... Participants who exhausted time-limited benefits but are receiving services.
- Case Mgmt - Service for Working (CMU)..... Used for individuals working in unsubsidized employment who are without barriers to full-time employment.
- Case Mgmt - Non-Custodial Parent (CMN)..... Used for case management services for non-custodial parents.
- Case Mgmt - Minor Parent (CMM)..... Used for case management services for a custodial minor parent.

Number of Months Served in W-2 *

Percentage Distribution- Statewide December 1998- June 2008

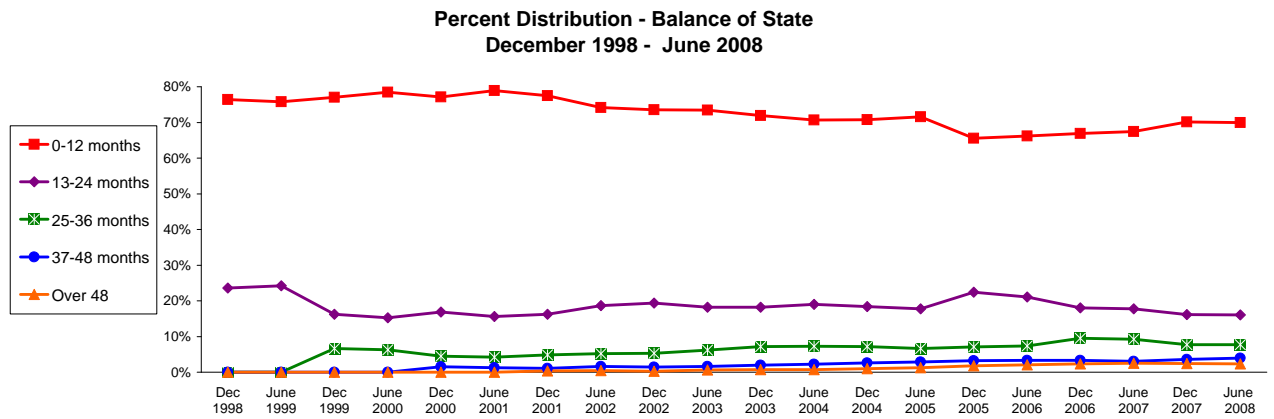
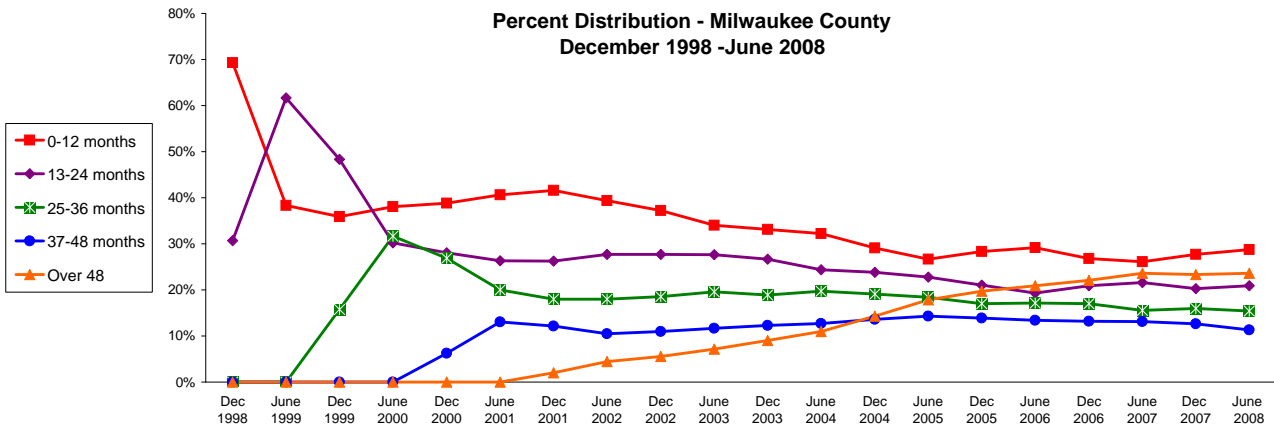


Source: CARES, Bureau of Working Families, Division of Family and Economic Security, Department of Children & Families.
 * Note: Length of stay is determined for the W-2 participants in the report month by the number of total months a participant has been in W-2 since the beginning of the program.

Number of Months Served in W-2 - Most Recent Six Months

	Months	Mar 2008	Apr 2008	May 2008	Jun 2008	Jul 2008	Aug 2008
Milwaukee County	0-12	2,129	2,084	2,051	1,978	1,989	1,998
	13-24	1,425	1,423	1,433	1,438	1,452	1,457
	25-36	1,080	1,080	1,084	1,063	1,057	1,019
	37-48	813	796	792	777	804	793
	Over 48	1,619	1,624	1,620	1,627	1,646	1,558
Balance of State	0-12	1,638	1,704	1,658	1,624	1,678	1,710
	13-24	366	371	378	373	364	363
	25-36	184	177	174	178	170	158
	37-48	76	82	89	91	81	89
	Over 48	56	56	57	55	51	51
Statewide	0-12	3,527	3,558	3,488	3,400	3,453	3,493
	13-24	1,771	1,775	1,780	1,781	1,789	1,791
	25-36	1,262	1,256	1,263	1,239	1,229	1,180
	37-48	903	885	884	876	889	885
	Over 48	1,687	1,695	1,695	1,697	1,713	1,626

Number of Months Served in W-2* , Continued

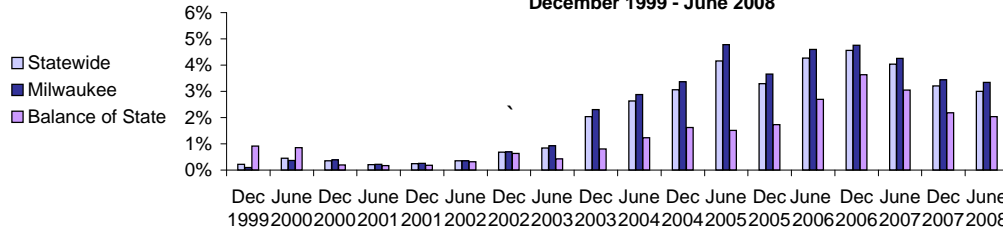


Source: CARES, Bureau of Working Families, Division of Family and Economic Security, Department of Children & Families

* Length of stay is determined for the W-2 participants in the report month by the number of total months a participant has been in W-2 since the beginning of the program. Participants may be counted more than once if their geographic location changes from Milwaukee to Balance of State or vice versa.

Extensions Granted for 24 - Month Clocks*

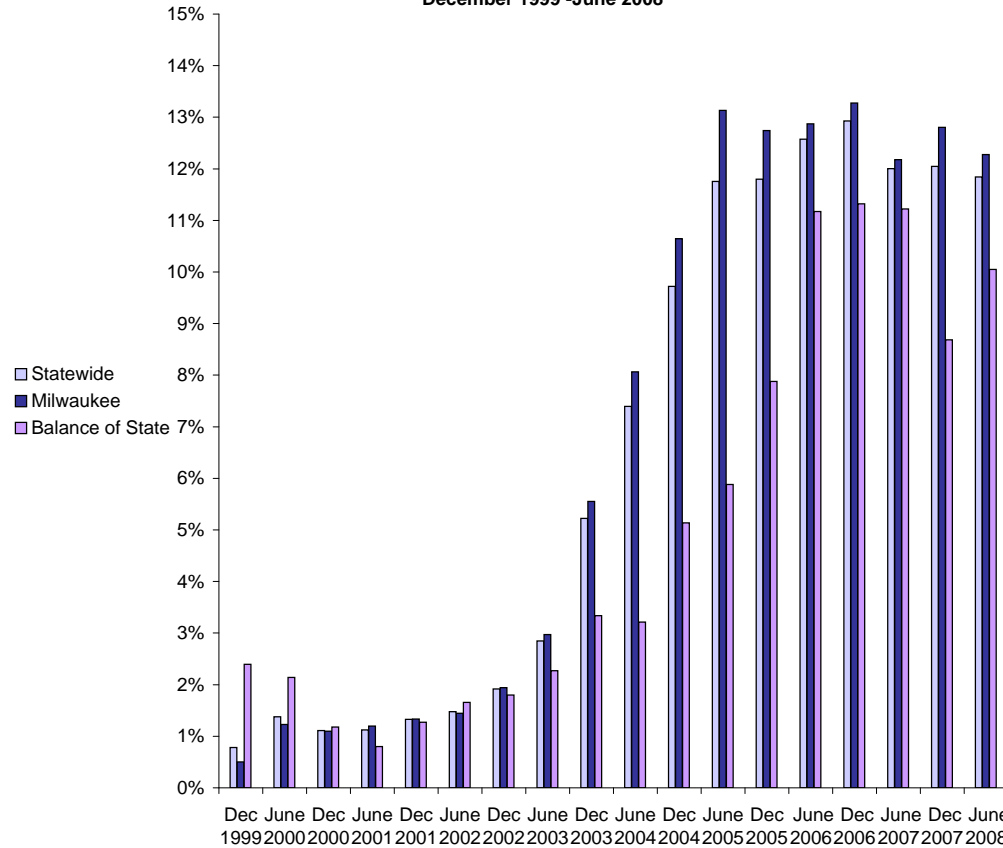
**Percent of W-2T & CSJ Participants with Beginning Extensions
December 1999 - June 2008**



Number of Beginning Extensions - Most Recent Six Months

	Mar 2008	Apr 2008	May 2008	Jun 2008	Jul 2008	Aug 2008
Milwaukee County	150	133	137	131	148	145
Balance of State	29	29	32	29	19	21
Statewide	179	162	169	160	167	166

**Percent of W-2T & CSJ Participants with Ongoing Extensions
December 1999 - June 2008**



Number of Ongoing Extensions - Most Recent Six Months

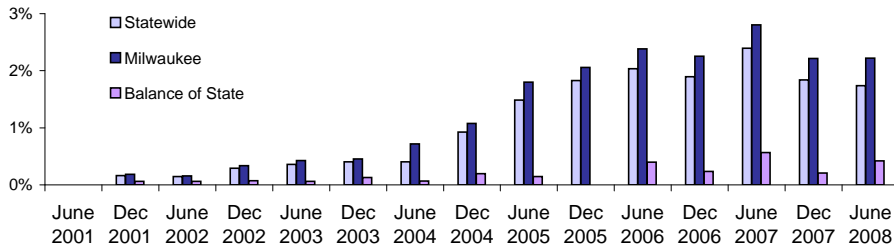
	Mar 2008	Apr 2008	May 2008	Jun 2008	Jul 2008	Aug 2008
Milwaukee County	463	437	446	434	452	432
Balance of State	86	86	89	86	83	77
Statewide	549	523	535	520	535	509

Source: CARES, Bureau of Working Families, Division of Family and Economic Security, Department of Children & Families.

* Extensions can be granted after 24 months of participation in a W-2T or CSJ placement. Extensions are granted when the participant is nearing the 24th month of their placement clock and they qualify for extended eligibility by meeting specific required criteria. Participants may be counted more than once if the participant's extension lasts longer than six months. Ongoing extensions are an end of the month count.

Extensions Granted for 60- Month Clocks*

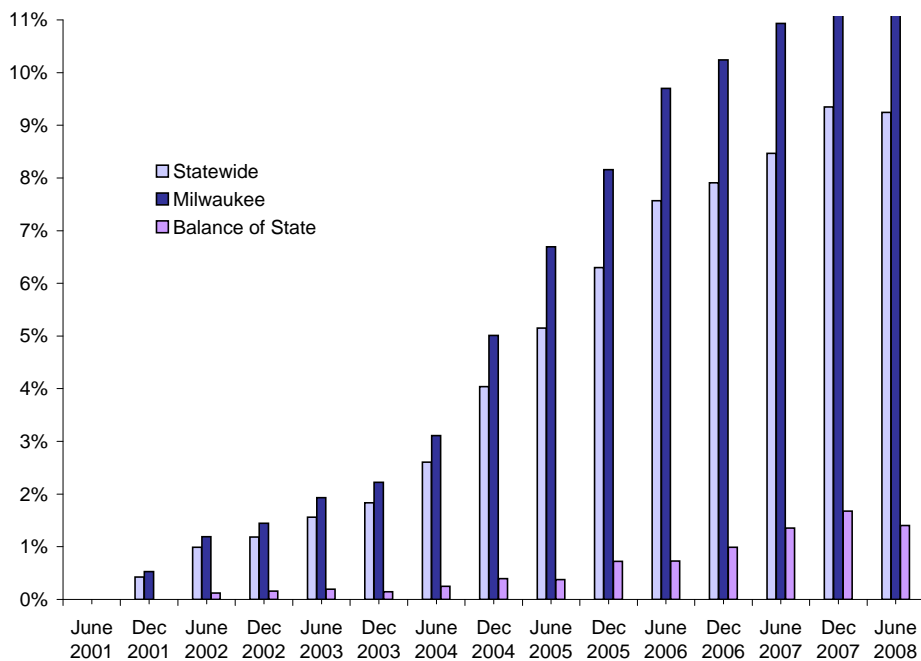
**Percent of Participants with Beginning Extensions
June 2001 - June 2008**



Number of Beginning Extensions - Most Recent Six Months

	Mar 2008	Apr 2008	May 2008	Jun 2008	Jul 2008	Aug 2008
Milwaukee County	88	87	109	87	92	104
Balance of State	8	9	3	6	3	6
Statewide	96	96	112	93	95	110

**Percent of Participants with Ongoing Extensions
June 2001 - June 2008**



Number of Ongoing Extensions - Most Recent Six Months

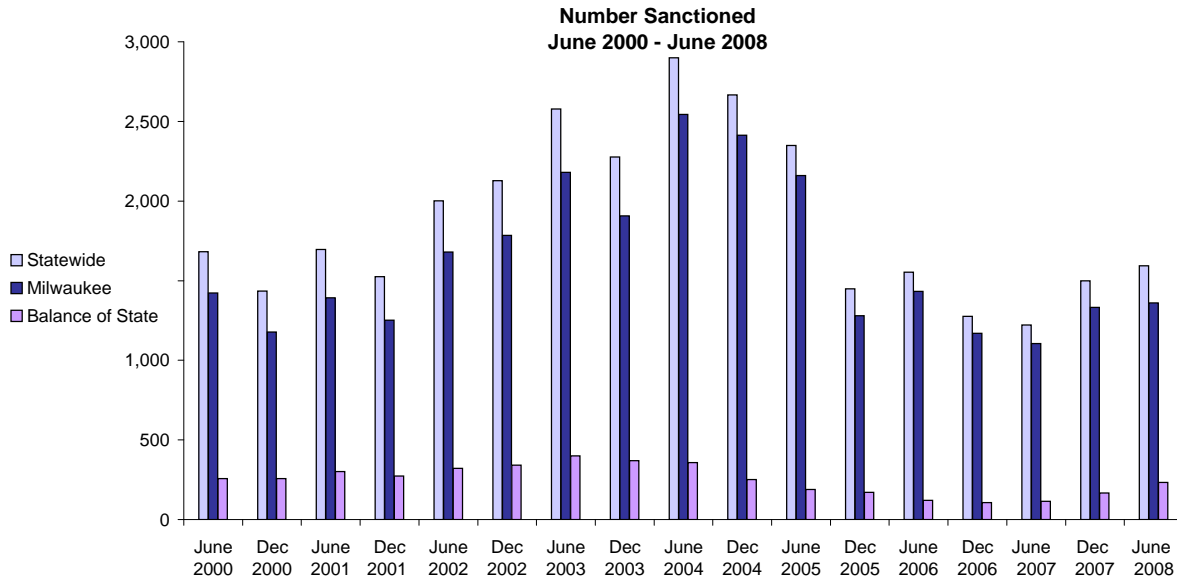
	Mar 2008	Apr 2008	May 2008	Jun 2008	Jul 2008	Aug 2008
Milwaukee County	480	478	476	474	461	469
Balance of State	21	24	22	20	22	24
Statewide	501	502	498	494	483	493

Source: CARES, Bureau of Working Families, Division of Family and Economic Security, Department of Children & Families.

Note: Extensions can be granted after 60 months of lifetime participation. Extensions are granted when the participant is nearing the 60th month of their lifetime clock and they qualify for extended eligibility by meeting specific required criteria. The 60- month extensions first became relevant as of September 2001.

* Participants may be counted more than once if the participant's extension lasts longer than six months. Ongoing Extensions are an end of the month count.

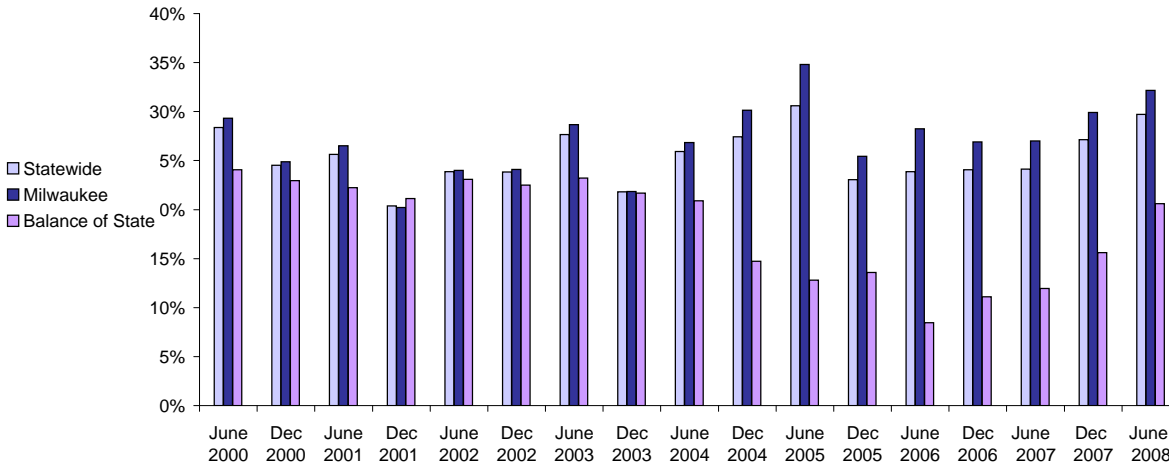
W-2T and CSJ Participants Who Were Sanctioned



Number Sanctioned - Most Recent Six Months

	Mar 2008	Apr 2008	May 2008	Jun 2008	Jul 2008	Aug 2008
Milwaukee County	1,515	1,484	1,451	1,360	1,415	1,367
Balance of State	188	200	209	234	249	239
Statewide	1,703	1,684	1,660	1,594	1,664	1,606

Percent Sanctioned June 2000 - June 2008



Percent Sanctioned - Most Recent Six Months

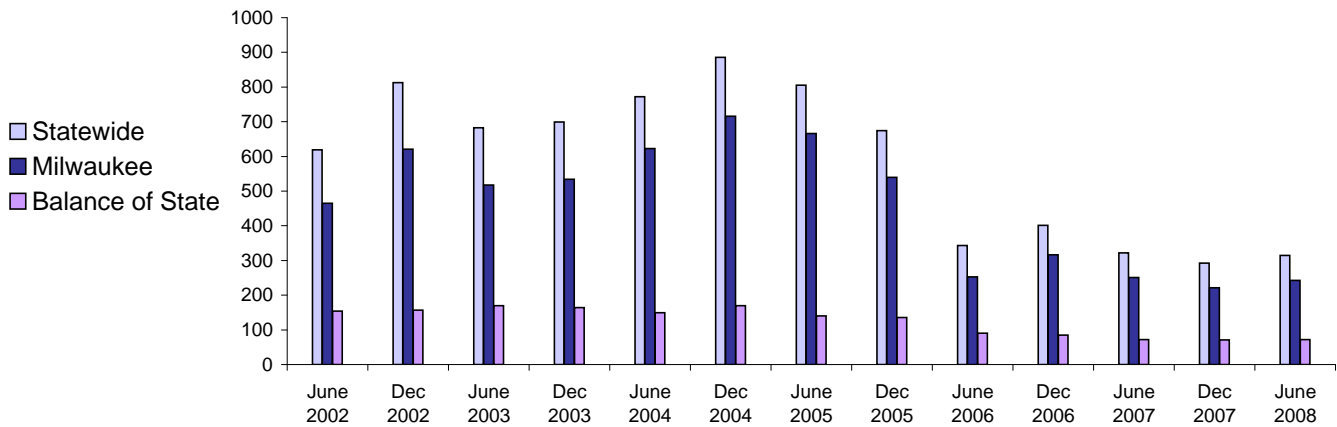
	Mar 2008	Apr 2008	May 2008	Jun 2008	Jul 2008	Aug 2008
Milwaukee County	35%	34%	34%	32%	33%	33%
Balance of State	17%	17%	18%	21%	22%	22%
Statewide	31%	31%	30%	30%	31%	30%

Source: CARES, Bureau of Working Families, Division of Family and Economic Security, Department of Children & Families.

Note: Because sanction counts prior to September 1999 were counted differently they are not included in these graphs. The graphs on this page report information on the sanctionable population (W-2T and CSJ placements only). The data represented here are point in time during a month.

Entered Employments of W-2 Participants

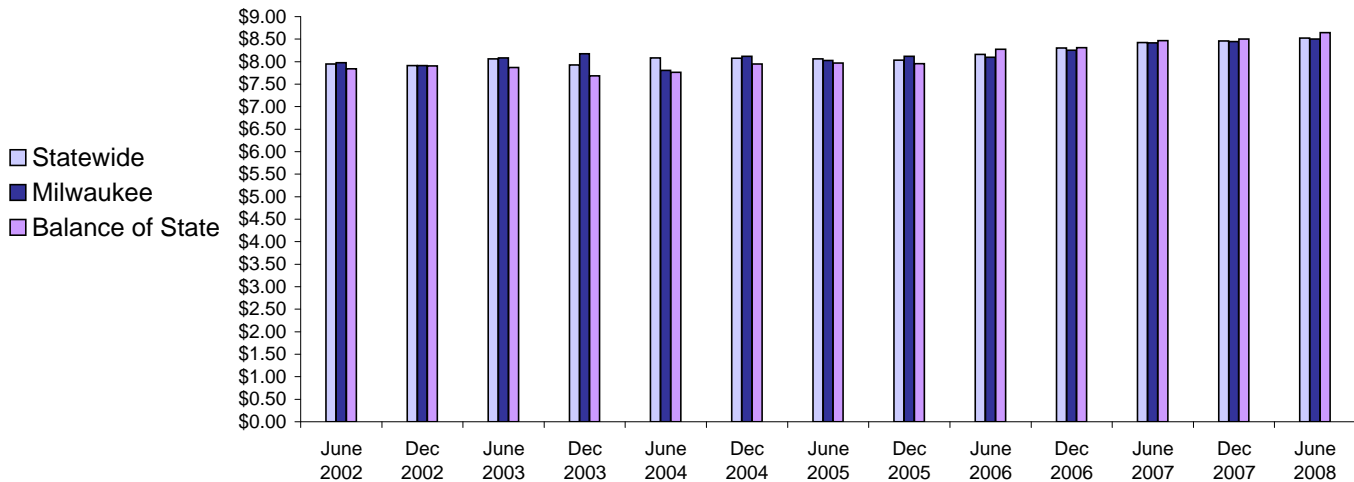
Six Month Average Number Entered Employment*
June 2002-June 2008



Total Number Of Entered Employments - Most Recent Six Months

	Mar 2008	Apr 2008	May 2008	Jun 2008	Jul 2008	Aug 2008
Milwaukee County	272	267	242	256	228	265
Balance of State	68	90	88	69	88	71
Statewide	340	357	330	325	316	336

Six Month Average Hourly Wage*
June 2002 - June 2008



Average Hourly Wage - Most Recent Six Months

	Mar 2008	Apr 2008	May 2008	Jun 2008	Jul 2008	Aug 2008
Milwaukee County	\$8.40	\$8.40	\$8.57	\$8.36	\$8.55	\$8.59
Balance of State	\$9.17	\$8.52	\$8.46	\$8.25	\$8.84	\$8.62
Statewide	\$8.55	\$8.43	\$8.54	\$8.33	\$8.63	\$8.59

Source: CARES, Bureau of Working Families, Division of Family and Economic Security, Department of Children & Families.

Note: Entered Employment is a W-2 program performance measure counted when a participant obtains or increases wages in a new job.

Entered Employment of less than 30 days are excluded. Wage data are reported for jobs with hourly wages

*Average number entered employment per month for the six month period ending in June or December.