

# Wisconsin Works (W-2) Critical Indicators



June  
2008

Bureau of Working Families  
Division of Family and Economic Security  
Department of Children and Families  
State of Wisconsin

## Wisconsin W-2 Participants in Paid Placements\*

### Number of Participants in Paid Placements

	One Year Ago	Last Month	This Month	Change in Most Recent Two Months	
	Jun 2007	May 2008	Jun 2008	Number	Percent
<b>Paid Participants:</b>					
Milwaukee County	4,452	4,402	4,323	-79	-1.8%
Balance of State	1,705	1,845	1,817	-28	-1.5%
Statewide Caseload	6,157	6,247	6,140	-107	-1.7%
<b>Milwaukee County Regions:</b>	<b>Jun 2007</b>	<b>May 2008</b>	<b>Jun 2008</b>	<b>Number</b>	<b>Percent</b>
Milwaukee NE YWCA	537	525	486	-39	-7.4%
Milwaukee SE UMOS	686	750	720	-30	-4.0%
Milwaukee Central UMOS	1,072	1,223	1,255	32	2.6%
Milwaukee NW MAXIMUS	1,043	885	856	-29	-3.3%
Milwaukee SW MAXIMUS	715	627	618	-9	-1.4%
Milwaukee SSI-Adv UMOS	399	388	386	-2	-0.5%
<b>Milwaukee County Total*:</b>	<b>4,452</b>	<b>4,402</b>	<b>4,323</b>	<b>-79</b>	<b>-1.8%</b>

Source: CARES, Bureau of Working Families, Division of Family and Economic Security, Department of Children & Families

\*Note: Milwaukee County total includes a small number of cases served by Milwaukee County Department of Social Services.

Note: The paid caseload includes the following categories of placements:

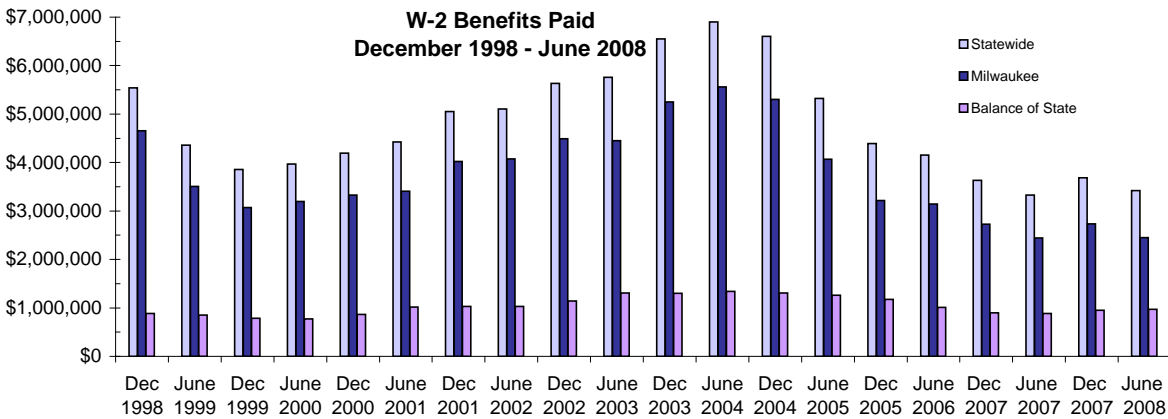
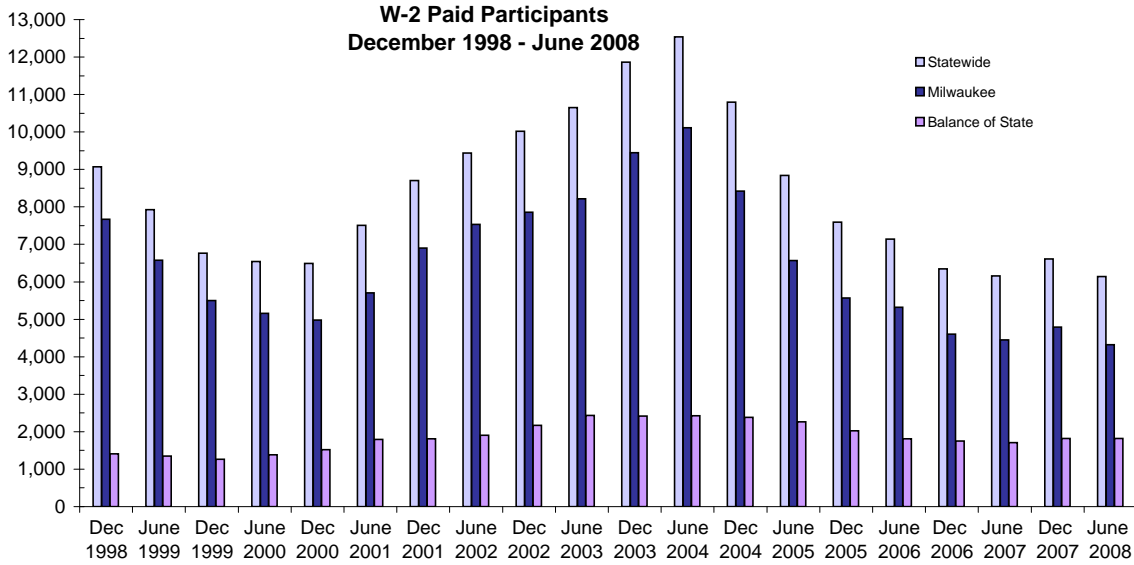
W-2 Transition (W-2T)..... A W-2 work-readiness practice placement for individuals who are unable to perform independent, self-sustaining work, but who are able to participate in work practice or other developmental activities and training up to their abilities.

Community Service Job (CSJ)..... A W-2 work-readiness practice placement designed to improve the employability of participants by providing work experience and training in the public and private sectors.

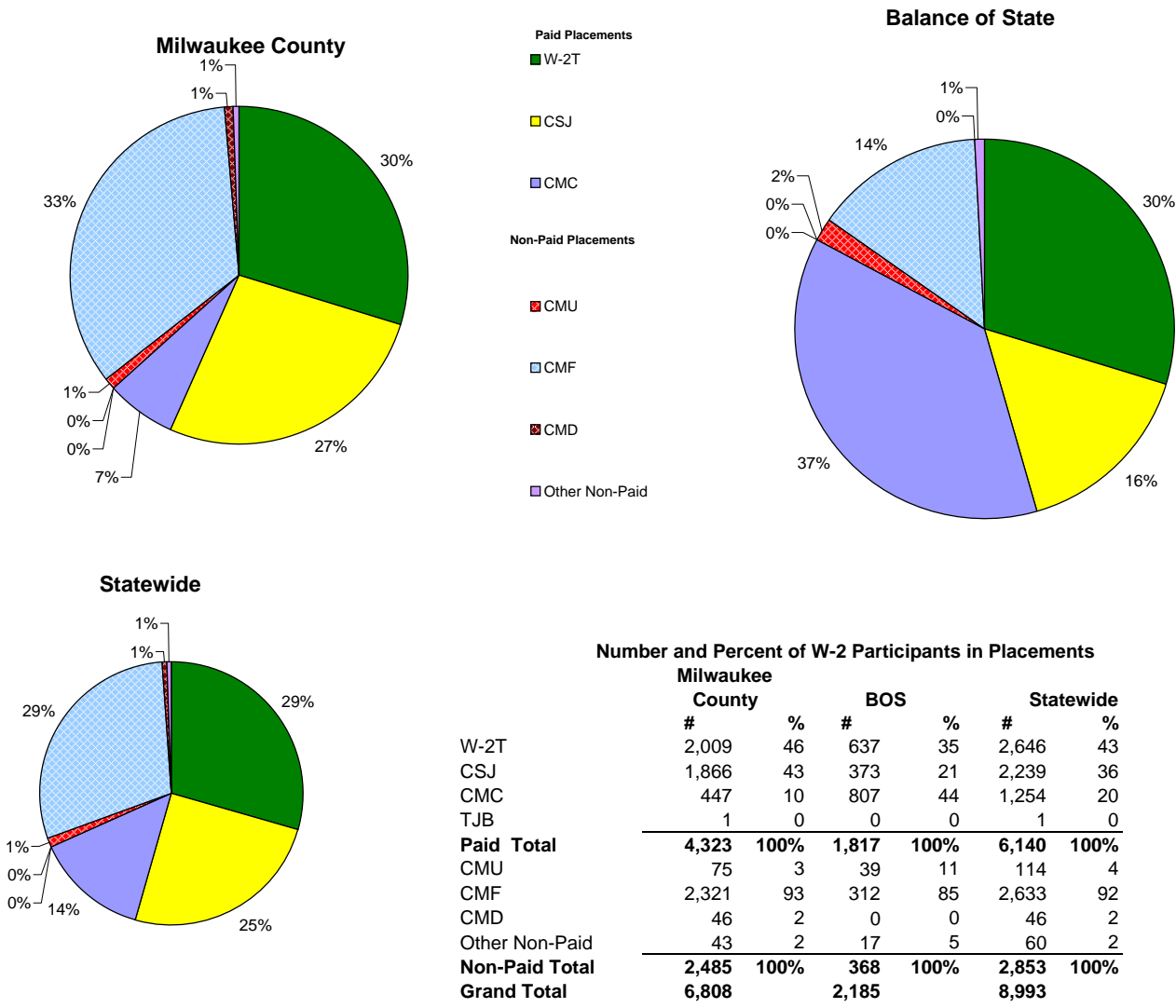
Trial Job (TJB)..... A W-2 subsidized employment position that provides work experience and training which may become permanent, unsubsidized employment. Paid directly to the employer.

Caretaker of Newborn (CMC)..... A custodial parent of a child who is 12 weeks old or less and who meets the financial and non-financial eligibility requirements for W-2 employment positions.

## W-2 Paid Participants and Benefits Paid



## Placement of W-2 Participants, June 2008

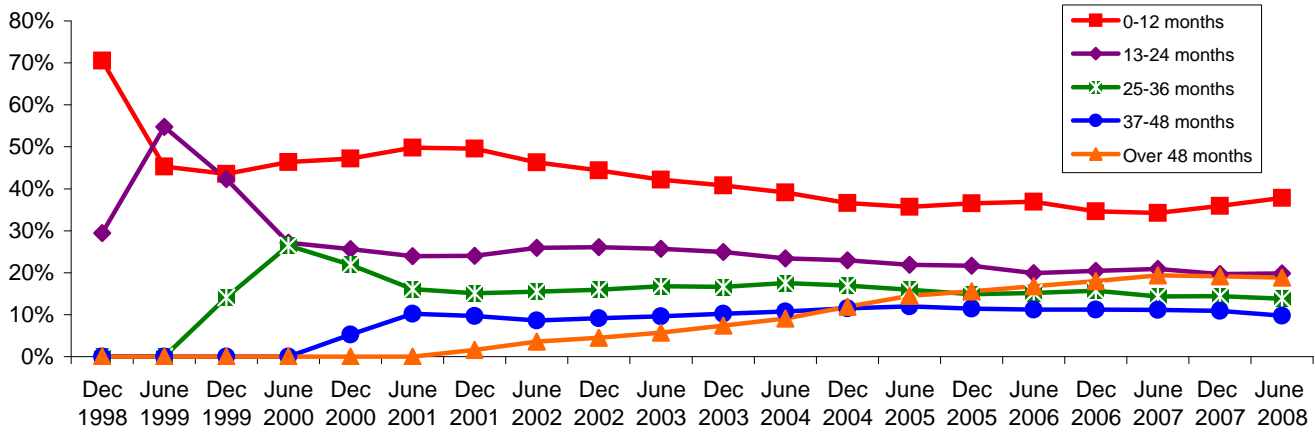


Source: CARES, Bureau of Working Families, Division of Family and Economic Security, Department of Children & Families.

- Note: W-2 Transition (W-2T)..... A W-2 work-readiness practice placement for individuals who are unable to perform independent, self-sustaining work, but who are able to participate in work practice or other developmental activities and training up to their abilities.
- Community Service Job (CSJ)..... A W-2 work-readiness practice placement designed to improve the employability of participants by providing work experience and training in the public and private sectors.
- Trial Job (TJB)..... A W-2 subsidized employment position that provides work experience and training which may become permanent, unsubsidized employment. Subsidy is paid directly to the employer.
- Case Mgmt - Caretaker of a Newborn (CMC)..... A custodial parent of a child who is 12 weeks old or less and who meets the financial and non-financial eligibility requirements for W-2 employment positions.
- Case Mgmt - Pregnancy (CMP)..... A participant with a medically verified pregnancy.
- Case Mgmt - Follow - Up ( CMF )..... Used for Placement for Individuals who move from a W-2 benefit Placement to unsubsidized employment.
- Case Mgmt- Denied Extension CMD)..... Participants who exhausted time-limited benefits but are receiving services.
- Case Mgmt - Service for Working (CMU)..... Used for individuals working in unsubsidized employment who are without barriers to full-time employment.
- Case Mgmt - Non-Custodial Parent (CMN)..... Used for case management services for non-custodial parents.
- Case Mgmt - Minor Parent (CMM)..... Used for case management services for a custodial minor parent.

## Number of Months Served in W-2 \*

### Percentage Distribution- Statewide December 1998- June 2008

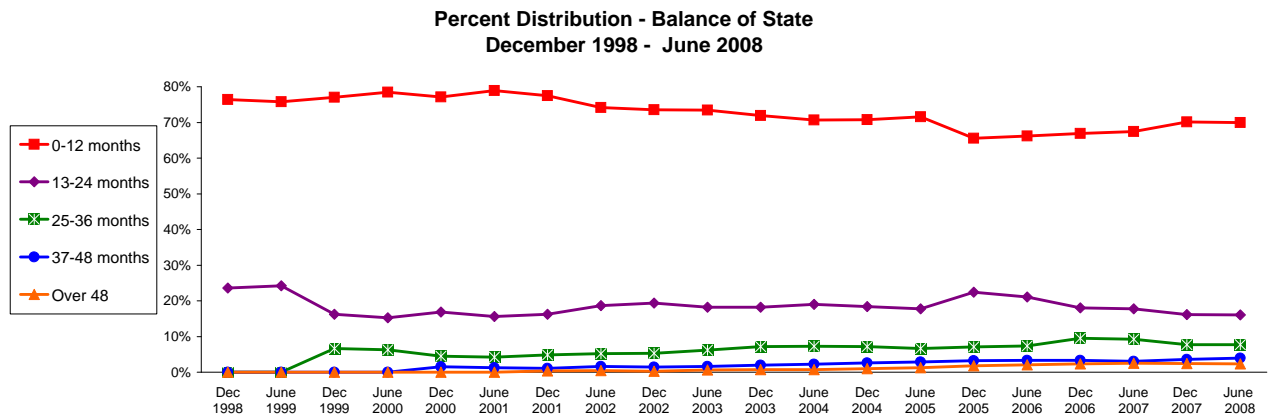
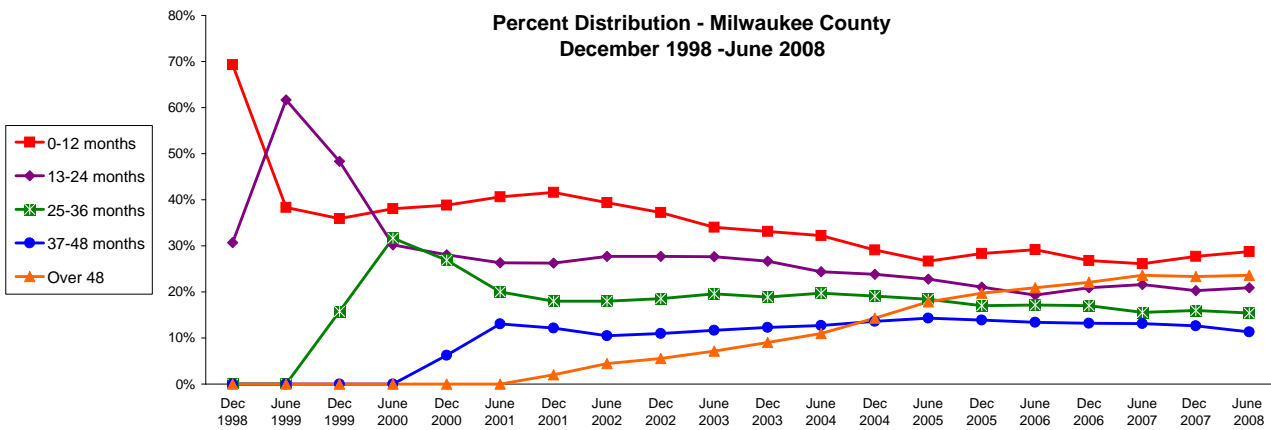


Source: CARES, Bureau of Working Families, Division of Family and Economic Security, Department of Children & Families.  
 \* Note: Length of stay is determined for the W-2 participants in the report month by the number of total months a participant has been in W-2 since the beginning of the program.

### Number of Months Served in W-2 - Most Recent Six Months

	Months	Jan 2008	Feb 2008	Mar 2008	Apr 2008	May 2008	Jun 2008
<b>Milwaukee County</b>	0-12	2,236	2,152	2,129	2,084	2,051	1,978
	13-24	1,603	1,497	1,425	1,423	1,433	1,438
	25-36	1,199	1,085	1,080	1,080	1,084	1,063
	37-48	954	895	813	796	792	777
	Over 48	1,842	1,704	1,619	1,624	1,620	1,627
<b>Balance of State</b>	0-12	1,639	1,599	1,638	1,704	1,658	1,624
	13-24	385	368	366	371	378	373
	25-36	181	185	184	177	174	178
	37-48	76	75	76	82	89	91
	Over 48	57	58	56	56	57	55
<b>Statewide</b>	0-12	3,624	3,514	3,527	3,558	3,488	3,400
	13-24	1,966	1,843	1,771	1,775	1,780	1,781
	25-36	1,375	1,271	1,262	1,256	1,263	1,239
	37-48	1,039	982	903	885	884	876
	Over 48	1,913	1,773	1,687	1,695	1,695	1,697

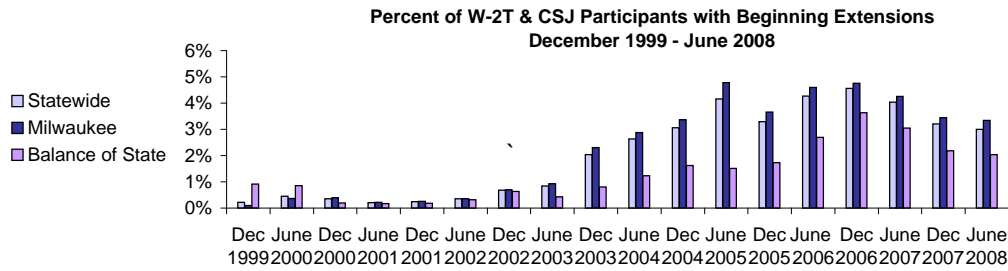
## Number of Months Served in W-2\* , Continued



Source: CARES, Bureau of Working Families, Division of Family and Economic Security, Department of Children & Families

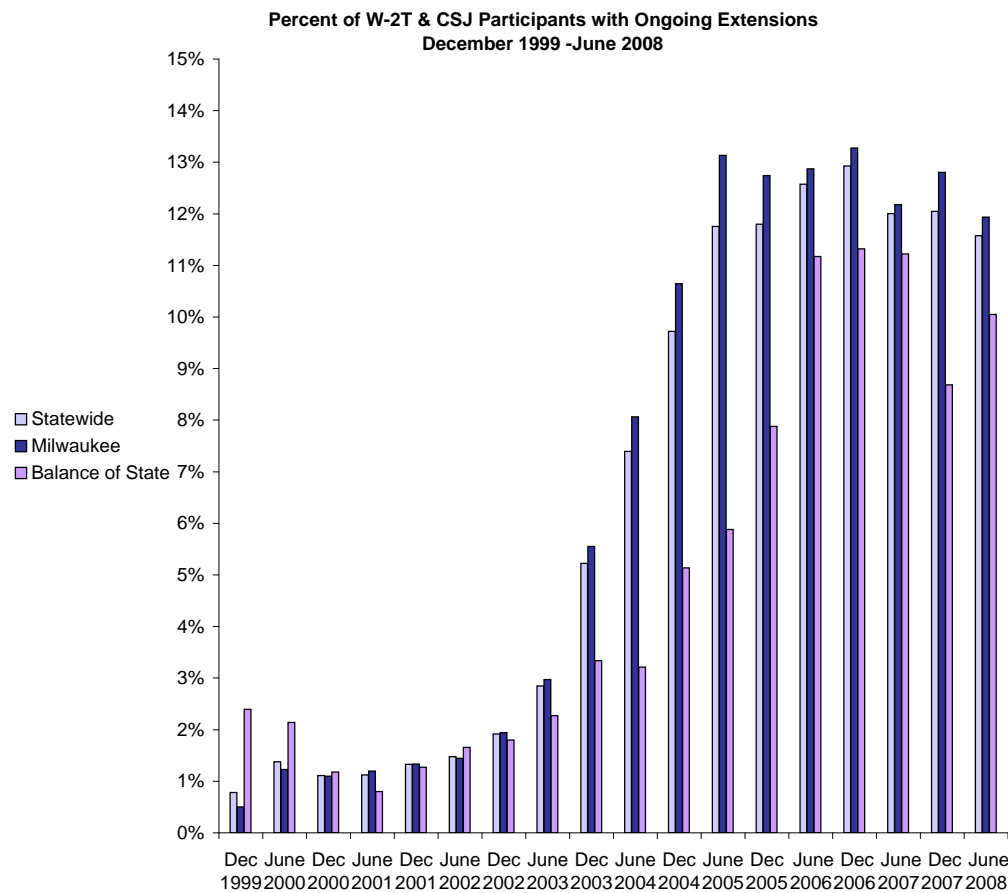
\* Length of stay is determined for the W-2 participants in the report month by the number of total months a participant has been in W-2 since the beginning of the program. Participants may be counted more than once if their geographic location changes from Milwaukee to Balance of State or vice versa.

## Extensions Granted for 24 - Month Clocks\*



### Number of Beginning Extensions - Most Recent Six Months

	Jan 2008	Feb 2008	Mar 2008	Apr 2008	May 2008	Jun 2008
<b>Milwaukee County</b>	157	141	150	133	137	131
<b>Balance of State</b>	22	20	29	29	32	29
<b>Statewide</b>	179	161	179	162	169	160



### Number of Ongoing Extensions - Most Recent Six Months

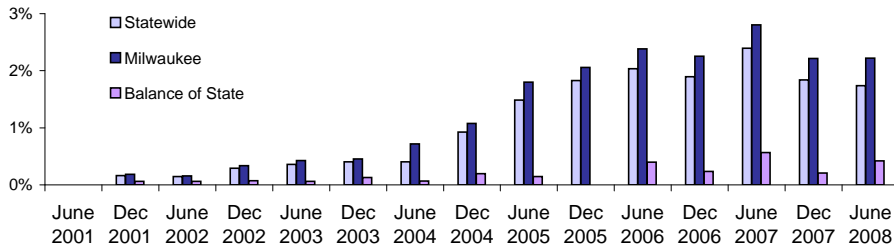
	Jan 2008	Feb 2008	Mar 2008	Apr 2008	May 2008	Jun 2008
<b>Milwaukee County</b>	475	464	463	437	446	434
<b>Balance of State</b>	82	79	86	86	89	86
<b>Statewide</b>	557	543	549	523	535	520

Source: CARES, Bureau of Working Families, Division of Family and Economic Security, Department of Children & Families.

\* Extensions can be granted after 24 months of participation in a W-2T or CSJ placement. Extensions are granted when the participant is nearing the 24th month of their placement clock and they qualify for extended eligibility by meeting specific required criteria. Participants may be counted more than once if the participant's extension lasts longer than six months. Ongoing extensions are an end of the month count.

## Extensions Granted for 60- Month Clocks\*

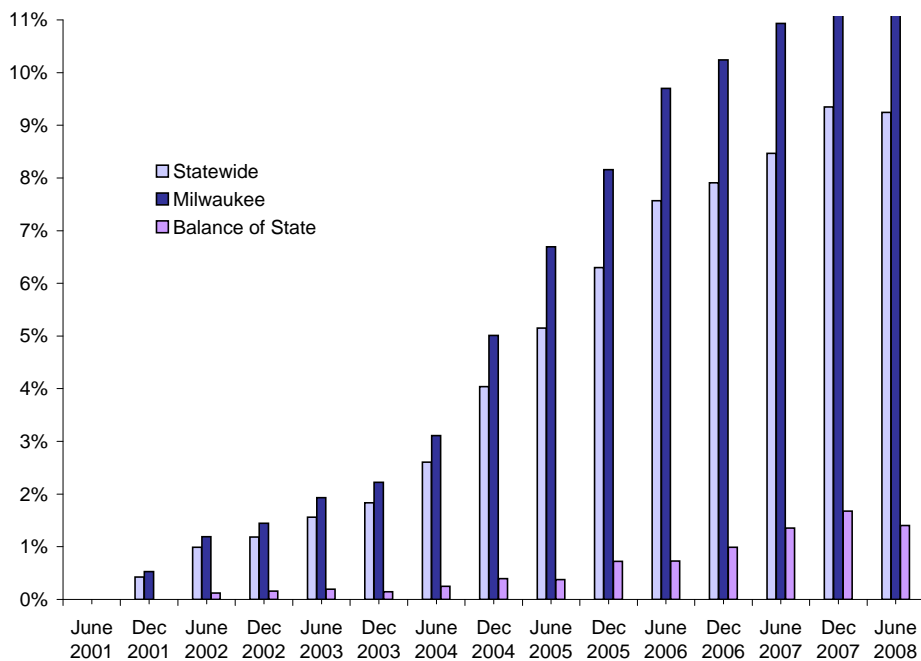
**Percent of Participants with Beginning Extensions  
June 2001 - June 2008**



**Number of Beginning Extensions - Most Recent Six Months**

	Jan 2008	Feb 2008	Mar 2008	Apr 2008	May 2008	Jun 2008
<b>Milwaukee County</b>	88	99	88	87	109	87
<b>Balance of State</b>	3	6	8	9	3	6
<b>Statewide</b>	91	105	96	96	112	93

**Percent of Participants with Ongoing Extensions  
June 2001 - June 2008**



**Number of Ongoing Extensions - Most Recent Six Months**

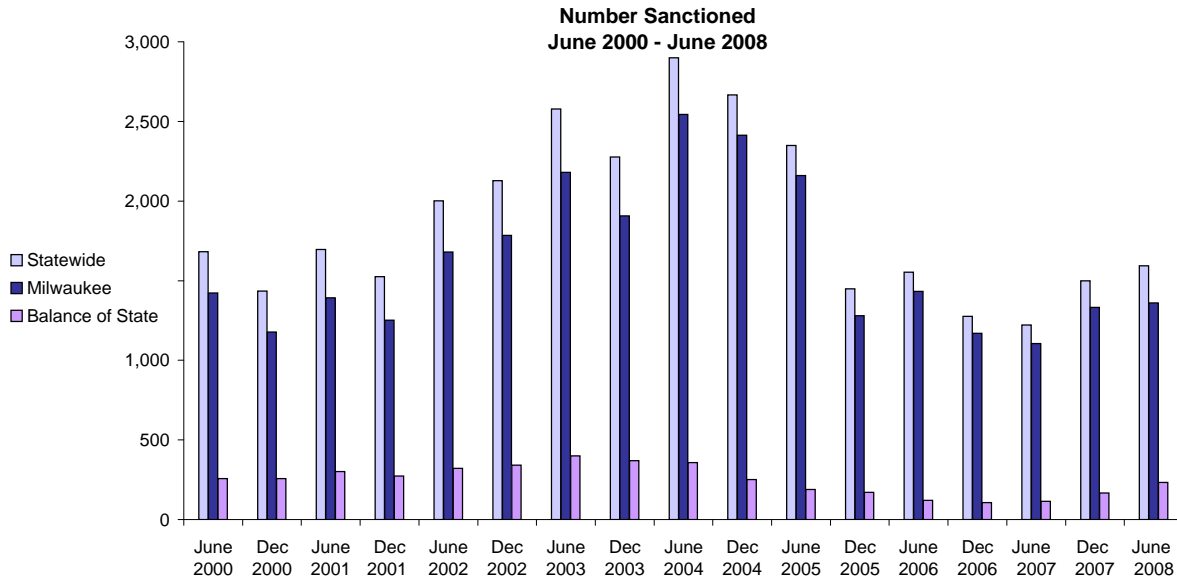
	Jan 2008	Feb 2008	Mar 2008	Apr 2008	May 2008	Jun 2008
<b>Milwaukee County</b>	499	500	480	478	476	474
<b>Balance of State</b>	21	21	21	24	22	20
<b>Statewide</b>	520	521	501	502	498	494

Source: CARES, Bureau of Working Families, Division of Family and Economic Security, Department of Children & Families.

Note: Extensions can be granted after 60 months of lifetime participation. Extensions are granted when the participant is nearing the 60th month of their lifetime clock and they qualify for extended eligibility by meeting specific required criteria. The 60- month extensions first became relevant as of September 2001.

\* Participants may be counted more than once if the participant's extension lasts longer than six months. Ongoing Extensions are an end of the month count.

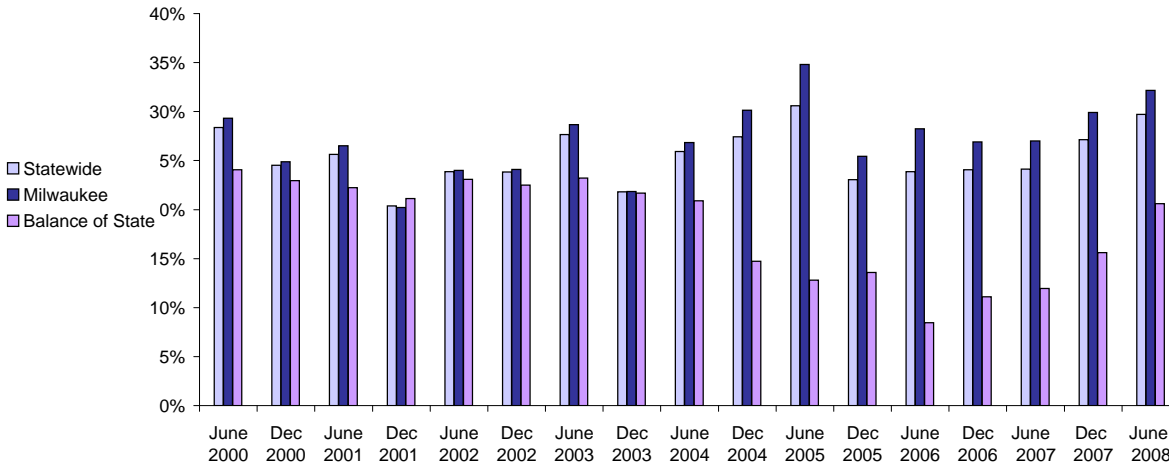
## W-2T and CSJ Participants Who Were Sanctioned



### Number Sanctioned - Most Recent Six Months

	Jan 2008	Feb 2008	Mar 2008	Apr 2008	May 2008	Jun 2008
<b>Milwaukee County</b>	1,491	1,757	1,515	1,484	1,451	1,360
<b>Balance of State</b>	175	207	188	200	209	234
<b>Statewide</b>	1,666	1,964	1,703	1,684	1,660	1,594

### Percent Sanctioned June 2000 - June 2008



### Percent Sanctioned - Most Recent Six Months

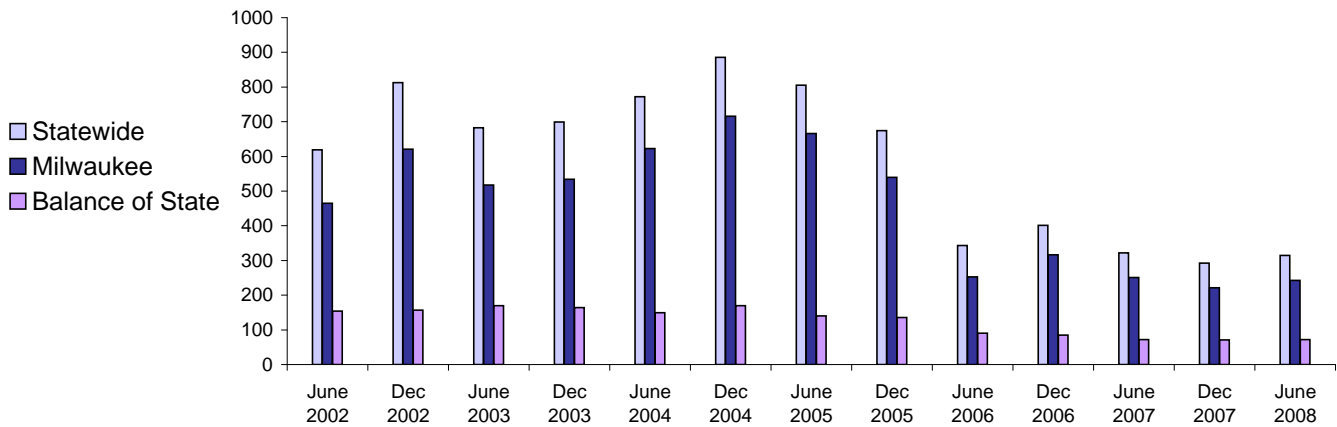
	Jan 2008	Feb 2008	Mar 2008	Apr 2008	May 2008	Jun 2008
<b>Milwaukee County</b>	34%	40%	35%	34%	34%	32%
<b>Balance of State</b>	16%	19%	17%	17%	18%	21%
<b>Statewide</b>	30%	36%	31%	31%	30%	30%

Source: CARES, Bureau of Working Families, Division of Family and Economic Security, Department of Children & Families.

Note: Because sanction counts prior to September 1999 were counted differently they are not included in these graphs. The graphs on this page report information on the sanctionable population (W-2T and CSJ placements only). The data represented here are point in time during a month.

# Entered Employments of W-2 Participants

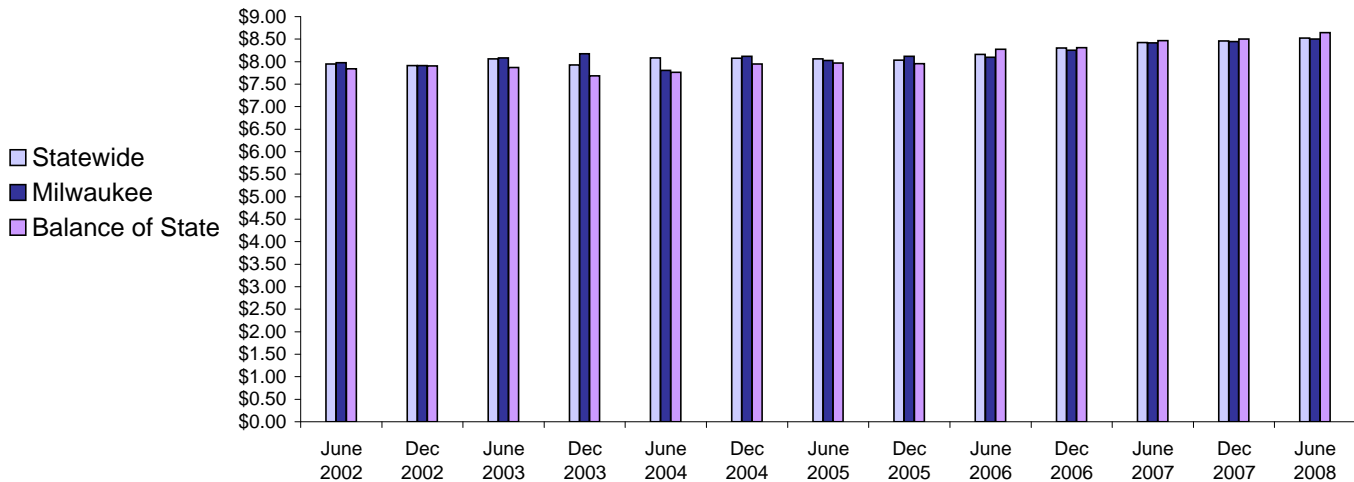
Six Month Average Number Entered Employment\*  
June 2002-June 2008



Total Number Of Entered Employments - Most Recent Six Months

	Jan 2008	Feb 2008	Mar 2008	Apr 2008	May 2008	Jun 2008
<b>Milwaukee County</b>	240	179	272	267	242	256
<b>Balance of State</b>	56	59	68	90	88	69
<b>Statewide</b>	296	238	340	357	330	325

Six Month Average Hourly Wage\*  
June 2002 - June 2008



Average Hourly Wage - Most Recent Six Months

	Jan 2008	Feb 2008	Mar 2008	Apr 2008	May 2008	Jun 2008
<b>Milwaukee County</b>	\$8.60	\$8.66	\$8.40	\$8.40	\$8.57	\$8.36
<b>Balance of State</b>	\$9.08	\$8.38	\$9.17	\$8.52	\$8.46	\$8.25
<b>Statewide</b>	\$8.69	\$8.60	\$8.55	\$8.43	\$8.54	\$8.33

Source: CARES, Bureau of Working Families, Division of Family and Economic Security, Department of Children & Families.

Note: Entered Employment is a W-2 program performance measure counted when a participant obtains or increases wages in a new job.

Entered Employment of less than 30 days are excluded. Wage data are reported for jobs with hourly wages

\*Average number entered employment per month for the six month period ending in June or December.