

# Wisconsin Works (W-2) Critical Indicators



**May  
2008**

Bureau of Program Services & Statistics  
Division of Family Supports  
Department of Workforce Development



State of Wisconsin

## Wisconsin W-2 Participants in Paid Placements\*

### Number of Participants in Paid Placements

|                                  | One Year Ago    | Last Month      | This Month      | Change in Most Recent Two Months |                |
|----------------------------------|-----------------|-----------------|-----------------|----------------------------------|----------------|
|                                  | May 2007        | Apr 2008        | May 2008        | Number                           | Percent        |
| <b>Paid Participants:</b>        |                 |                 |                 |                                  |                |
| Milwaukee County                 | 4,339           | 4,454           | 4,402           | -52                              | -1.2%          |
| Balance of State                 | 1,705           | 1,876           | 1,845           | -31                              | -1.7%          |
| Statewide Caseload               | 6,044           | 6,330           | 6,247           | -83                              | -1.3%          |
| <br>                             |                 |                 |                 |                                  |                |
| <b>Milwaukee County Regions:</b> | <b>May 2007</b> | <b>Apr 2008</b> | <b>May 2008</b> | <b>Number</b>                    | <b>Percent</b> |
| Milwaukee NE YWCA                | 541             | 535             | 525             | -10                              | -1.9%          |
| Milwaukee SE UMOS                | 684             | 768             | 750             | -18                              | -2.3%          |
| Milwaukee Central UMOS           | 1,024           | 1,180           | 1,223           | 43                               | 3.6%           |
| Milwaukee NW MAXIMUS             | 1,042           | 928             | 885             | -43                              | -4.6%          |
| Milwaukee SW MAXIMUS             | 687             | 638             | 627             | -11                              | -1.7%          |
| Milwaukee SSI-Adv UMOS           | 360             | 399             | 388             | -11                              | -2.8%          |
| <b>Milwaukee County Total*:</b>  | <b>4,339</b>    | <b>4,454</b>    | <b>4,402</b>    | <b>-52</b>                       | <b>-1.2%</b>   |

Source: CARES, Bureau of Program Services & Statistics, Division of Family Supports, Department of Workforce Development.

\*Note: Milwaukee County total includes a small number of cases served by Milwaukee County Department of Social Services.

Note: The paid caseload includes the following categories of placements:

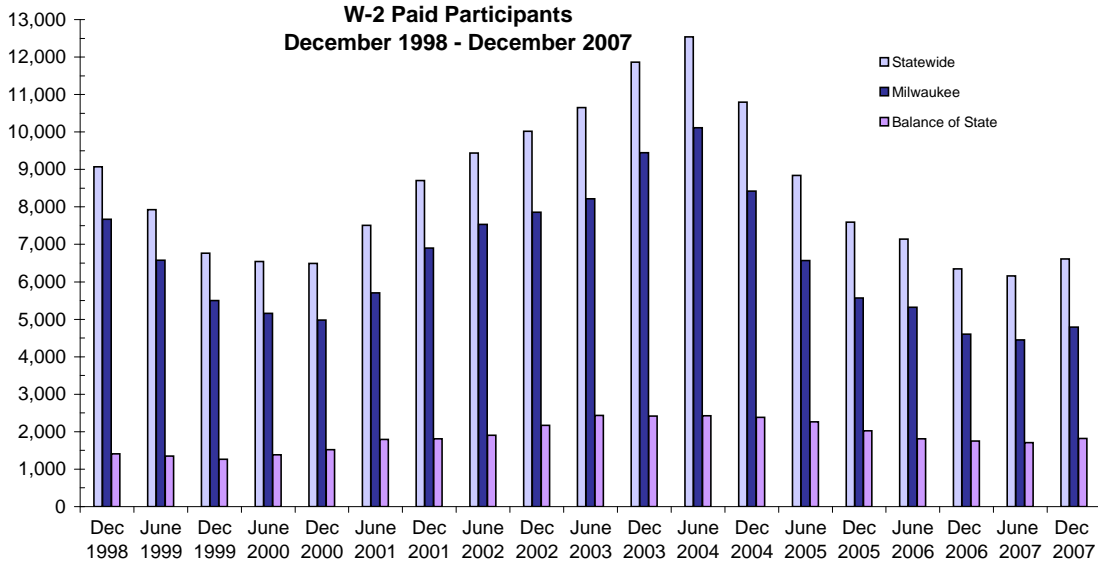
W-2 Transition (W-2T)..... A W-2 work-readiness practice placement for individuals who are unable to perform independent, self-sustaining work, but who are able to participate in work practice or other developmental activities and training up to their abilities.

Community Service Job (CSJ)..... A W-2 work-readiness practice placement designed to improve the employability of participants by providing work experience and training in the public and private sectors.

Trial Job (TJB)..... A W-2 subsidized employment position that provides work experience and training which may become permanent, unsubsidized employment. Paid directly to the employer.

Caretaker of Newborn (CMC)..... A custodial parent of a child who is 12 weeks old or less and who meets the financial and non-financial eligibility requirements for W-2 employment positions.

## W-2 Paid Participants and Benefits Paid

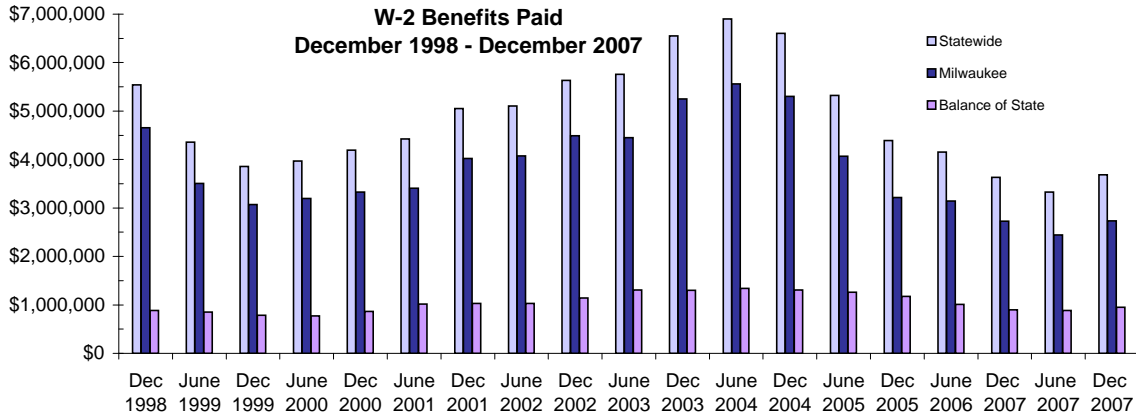


### W-2 Paid Participants - Most Recent Six Months

|                         | Dec 2007 | Jan 2008 | Feb 2008 | Mar 2008 | Apr 2008 | May 2008 |
|-------------------------|----------|----------|----------|----------|----------|----------|
| <b>Milwaukee County</b> | 4,791    | 4,802    | 4,635    | 4,541    | 4,454    | 4,402    |
| <b>Balance of State</b> | 1,816    | 1,832    | 1,785    | 1,832    | 1,876    | 1,845    |
| <b>Statewide</b>        | 6,607    | 6,634    | 6,420    | 6,373    | 6,330    | 6,247    |

Source: CARES, Bureau of Program Services & Statistics, Division of Family Supports, Department of Workforce Development

Note: The paid participants included in this count are participants who were in a paid placement during the report month.



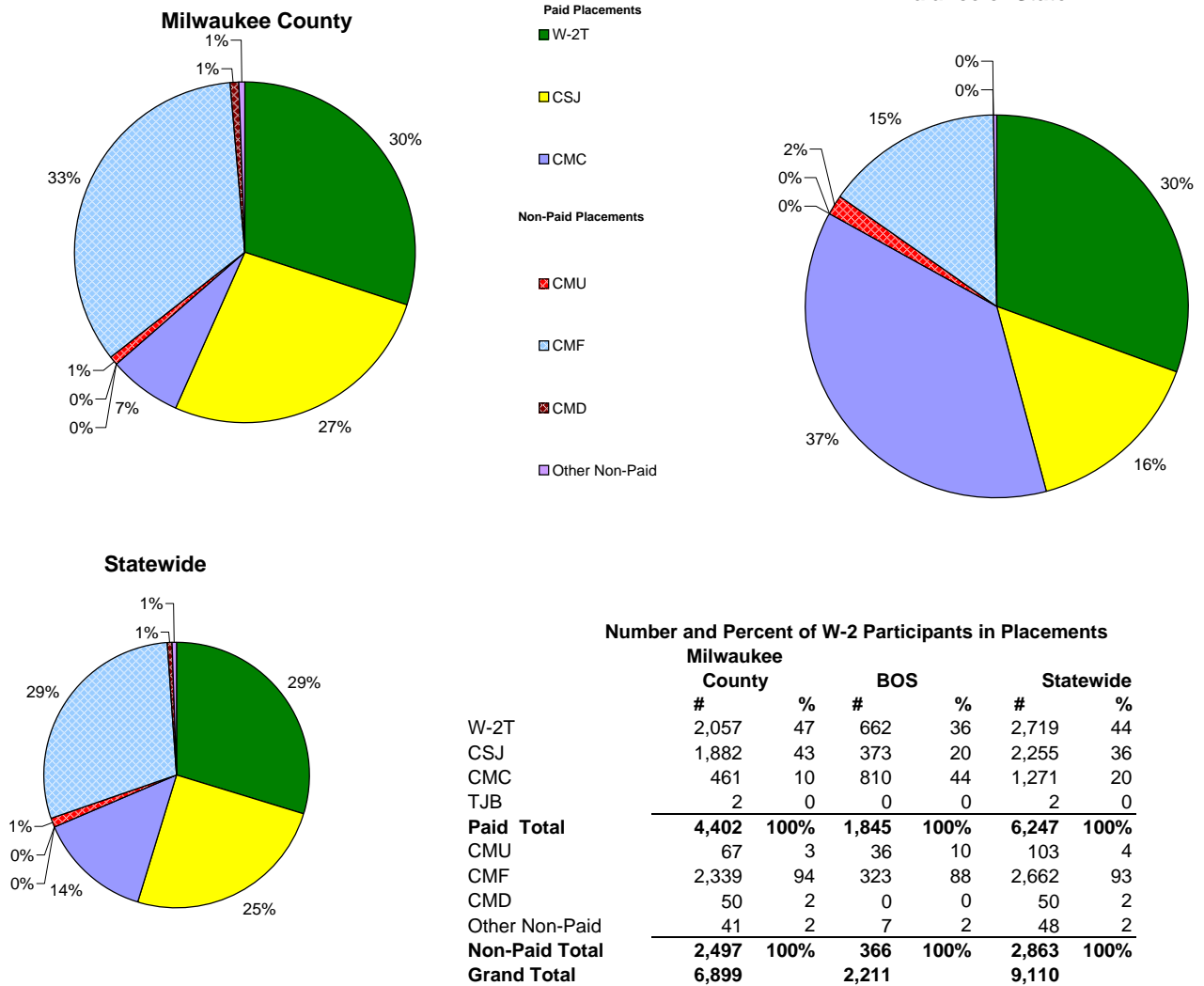
### W-2 Benefits Paid - Most Recent Six Months

|                         | Dec 2007    | Jan 2008    | Feb 2008    | Mar 2008    | Apr 2008    | May 2008    |
|-------------------------|-------------|-------------|-------------|-------------|-------------|-------------|
| <b>Milwaukee County</b> | \$2,735,420 | \$2,753,688 | \$2,686,969 | \$2,518,869 | \$2,520,025 | \$2,451,958 |
| <b>Balance of State</b> | \$649,575   | \$939,844   | \$955,968   | \$926,345   | \$929,426   | \$955,522   |
| <b>Statewide</b>        | \$3,684,995 | \$3,693,532 | \$3,642,937 | \$3,445,214 | \$3,449,451 | \$3,407,480 |

Source: CARES, Bureau of Program Services & Statistics, Division of Family Supports, Department of Workforce Development

Note: The benefits paid are the total monthly net benefits after sanctions and recoupments are applied.

## Placement of W-2 Participants, May 2008

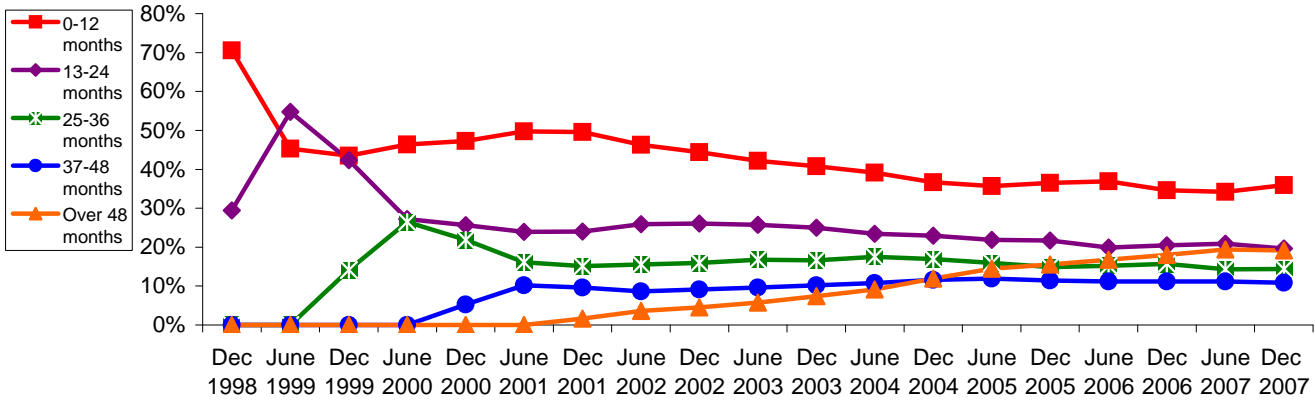


Source: CARES, Bureau of Program Services & Statistics, Division of Family Supports, Department of Workforce Development.

- Note: W-2 Transition (W-2T).....A W-2 work-readiness practice placement for individuals who are unable to perform independent, self-sustaining work, but who are able to participate in work practice or other developmental activities and training up to their abilities.
- Community Service Job (CSJ)..... A W-2 work-readiness practice placement designed to improve the employability of participants by providing work experience and training in the public and private sectors.
- Trial Job (TJB).....A W-2 subsidized employment position that provides work experience and training which may become permanent, unsubsidized employment. Subsidy is paid directly to the employer.
- Case Mgmt - Caretaker of a Newborn (CMC)..... A custodial parent of a child who is 12 weeks old or less and who meets the financial and non-financial eligibility requirements for W-2 employment positions.
- Case Mgmt - Pregnancy (CMP).....A participant with a medically verified pregnancy.
- Case Mgmt - Follow - Up ( CMF )..... Used for Placement for Individuals who move from a W-2 benefit Placement to unsubsidized employment.
- Case Mgmt- Denied Extension CMD)..... Participants who exhausted time-limited benefits but are receiving services.
- Case Mgmt - Service for Working (CMU).....Used for individuals working in unsubsidized employment who are without barriers to full-time employment.
- Case Mgmt - Non-Custodial Parent (CMN)..... Used for case management services for non-custodial parents.
- Case Mgmt - Minor Parent (CMM)..... Used for case management services for a custodial minor parent.

## Number of Months Served in W-2 \*

### Percentage Distribution- Statewide December 1998- December 2007

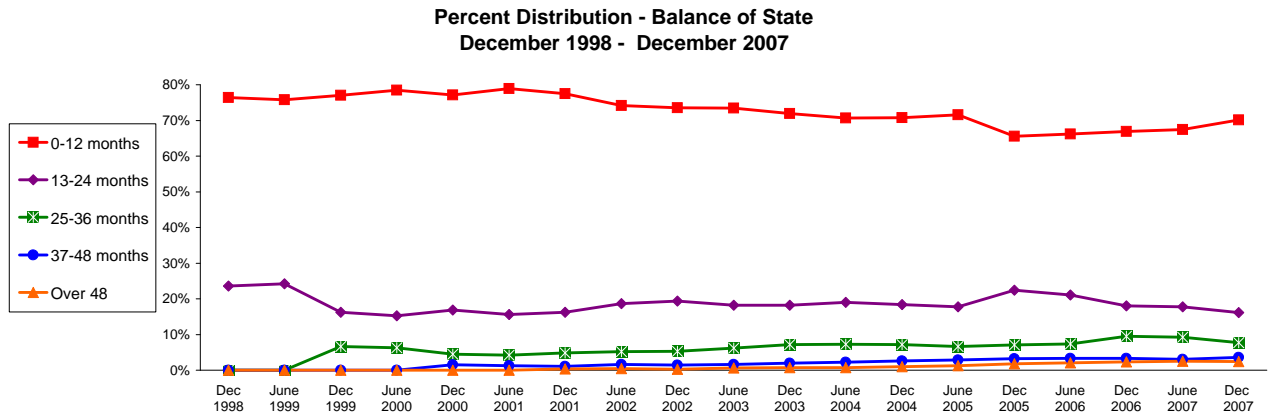
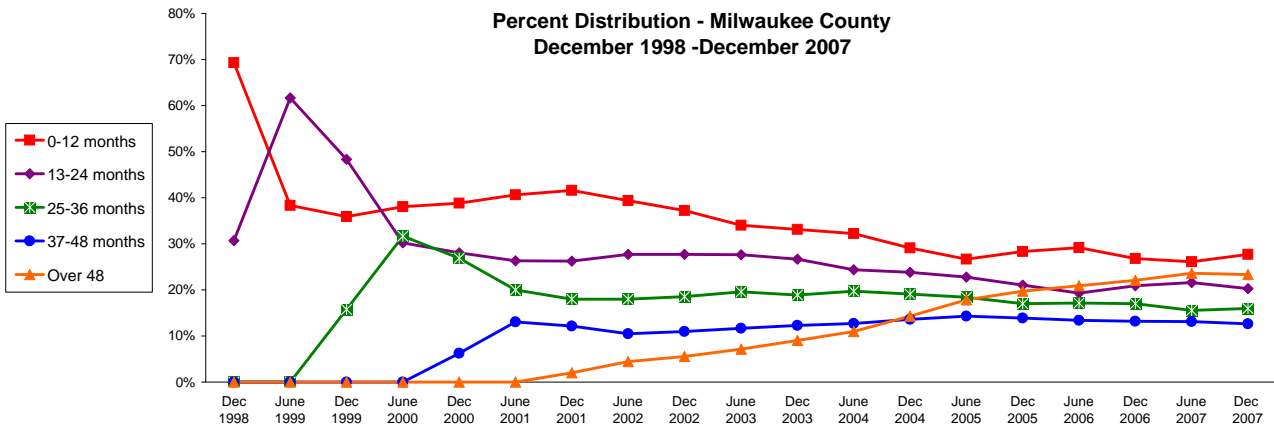


Source: CARES, Bureau of Program Services & Statistics, Division of Family Supports, Department of Workforce Development.  
 \* Note: Length of stay is determined for the W-2 participants in the report month by the number of total months a participant has been in W-2 since the beginning of the program.

### Number of Months Served in W-2 - Most Recent Six Months

|                         | Months  | Dec 2007 | Jan 2008 | Feb 2008 | Mar 2008 | Apr 2008 | May 2008 |
|-------------------------|---------|----------|----------|----------|----------|----------|----------|
| <b>Milwaukee County</b> | 0-12    | 2,183    | 2,236    | 2,152    | 2,129    | 2,084    | 2,051    |
|                         | 13-24   | 1,600    | 1,603    | 1,497    | 1,425    | 1,423    | 1,433    |
|                         | 25-36   | 1,261    | 1,199    | 1,085    | 1,080    | 1,080    | 1,084    |
|                         | 37-48   | 997      | 954      | 895      | 813      | 796      | 792      |
|                         | Over 48 | 1,839    | 1,842    | 1,704    | 1,619    | 1,624    | 1,620    |
| <b>Balance of State</b> | 0-12    | 1,656    | 1,639    | 1,599    | 1,638    | 1,704    | 1,658    |
|                         | 13-24   | 382      | 385      | 368      | 366      | 371      | 378      |
|                         | 25-36   | 183      | 181      | 185      | 184      | 177      | 174      |
|                         | 37-48   | 84       | 76       | 75       | 76       | 82       | 89       |
|                         | Over 48 | 57       | 57       | 58       | 56       | 56       | 57       |
| <b>Statewide</b>        | 0-12    | 3,591    | 3,624    | 3,514    | 3,527    | 3,558    | 3,488    |
|                         | 13-24   | 1,962    | 1,966    | 1,843    | 1,771    | 1,775    | 1,780    |
|                         | 25-36   | 1,439    | 1,375    | 1,271    | 1,262    | 1,256    | 1,263    |
|                         | 37-48   | 1,086    | 1,039    | 982      | 903      | 885      | 884      |
|                         | Over 48 | 1,911    | 1,913    | 1,773    | 1,687    | 1,695    | 1,695    |

## Number of Months Served in W-2\* , Continued

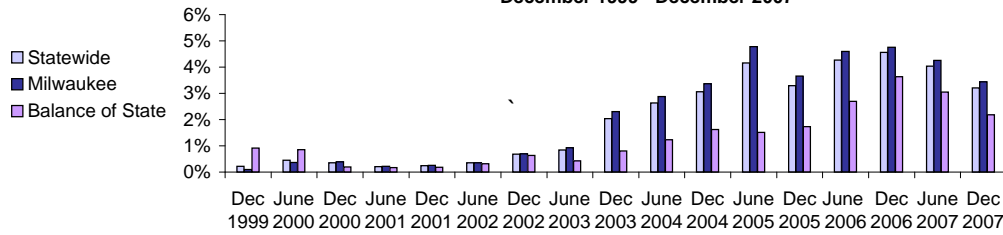


Source: CARES, Bureau of Program Services & Statistics, Division of Family Services, Department of Workforce Development.

\* Length of stay is determined for the W-2 participants in the report month by the number of total months a participant has been in W-2 since the beginning of the program. Participants may be counted more than once if their geographic location changes from Milwaukee to Balance of State or vice versa.

## Extensions Granted for 24 - Month Clocks\*

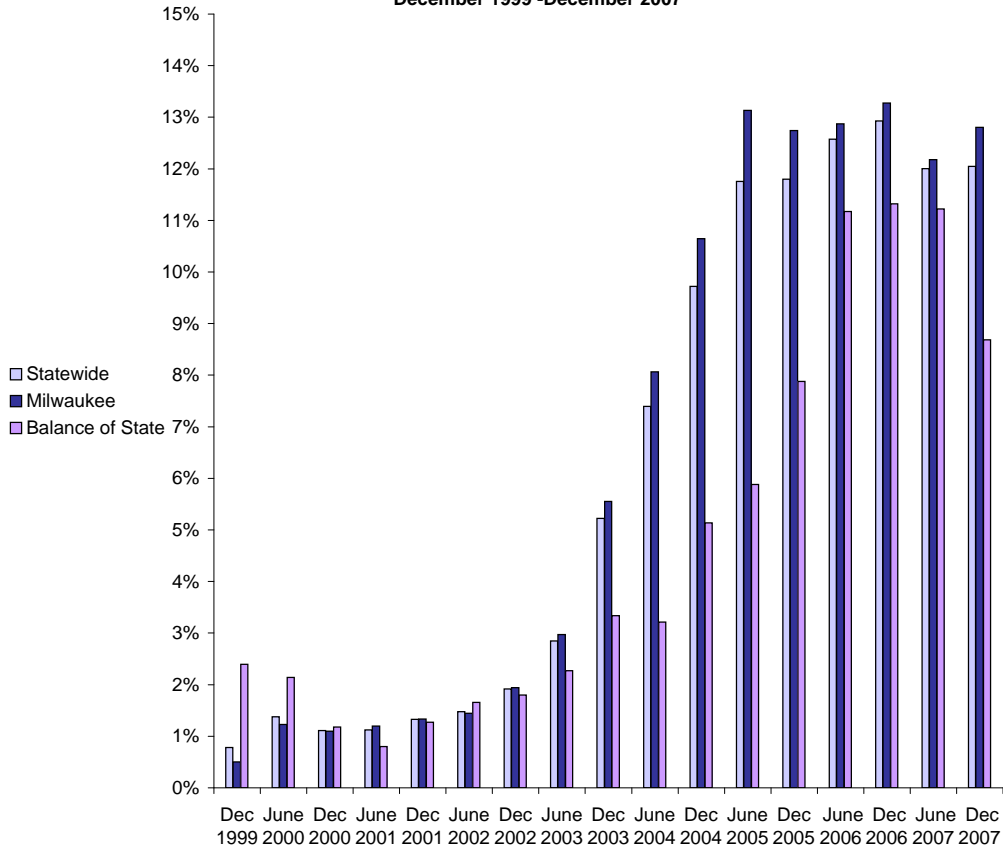
**Percent of W-2T & CSJ Participants with Beginning Extensions  
December 1999 - December 2007**



**Number of Beginning Extensions - Most Recent Six Months**

|                         | Dec 2007 | Jan 2008 | Feb 2008 | Mar 2008 | Apr 2008 | May 2008 |
|-------------------------|----------|----------|----------|----------|----------|----------|
| <b>Milwaukee County</b> | 143      | 157      | 141      | 150      | 133      | 137      |
| <b>Balance of State</b> | 21       | 22       | 20       | 29       | 29       | 32       |
| <b>Statewide</b>        | 164      | 179      | 161      | 179      | 162      | 169      |

**Percent of W-2T & CSJ Participants with Ongoing Extensions  
December 1999 - December 2007**



**Number of Ongoing Extensions - Most Recent Six Months**

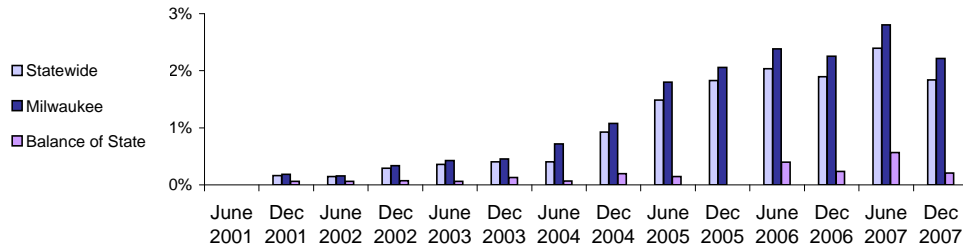
|                         | Dec 2007 | Jan 2008 | Feb 2008 | Mar 2008 | Apr 2008 | May 2008 |
|-------------------------|----------|----------|----------|----------|----------|----------|
| <b>Milwaukee County</b> | 498      | 475      | 464      | 463      | 437      | 446      |
| <b>Balance of State</b> | 76       | 82       | 79       | 86       | 86       | 89       |
| <b>Statewide</b>        | 574      | 557      | 543      | 549      | 523      | 535      |

Source: CARES, Bureau of Program Services & Statistics, Division of Family Supports, Department of Workforce Development.

\* Extensions can be granted after 24 months of participation in a W-2T or CSJ placement. Extensions are granted when the participant is nearing the 24th month of their placement clock and they qualify for extended eligibility by meeting specific required criteria. Participants may be counted more than once if the participant's extension lasts longer than six months. Ongoing extensions are an end of the month count.

## Extensions Granted for 60- Month Clocks\*

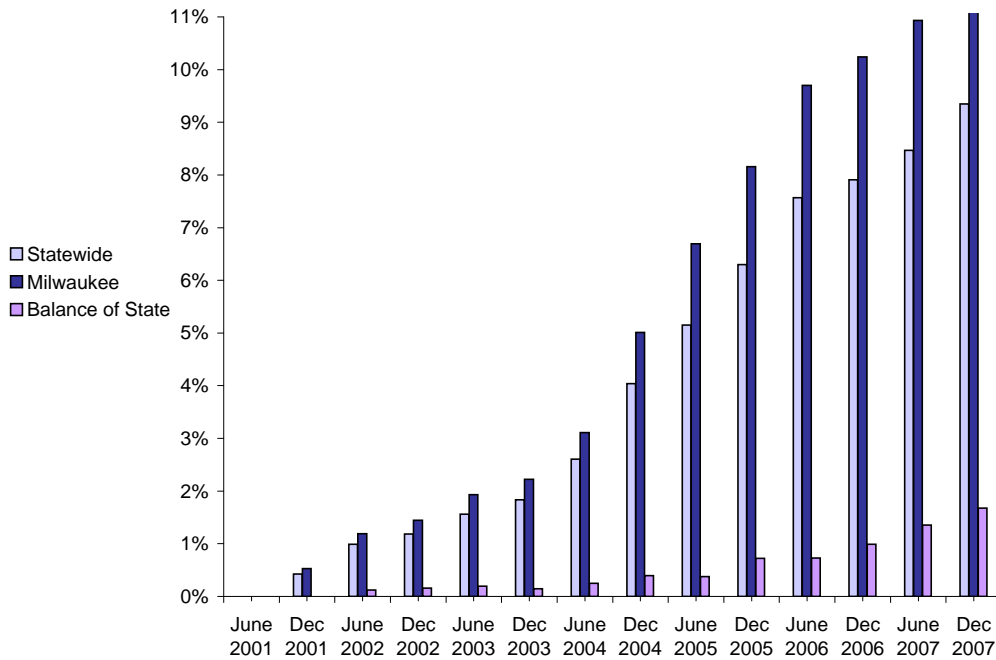
**Percent of Participants with Beginning Extensions  
June 2001 - December 2007**



**Number of Beginning Extensions - Most Recent Six Months**

|                         | Dec 2007 | Jan 2008 | Feb 2008 | Mar 2008 | Apr 2008 | May 2008 |
|-------------------------|----------|----------|----------|----------|----------|----------|
| <b>Milwaukee County</b> | 92       | 88       | 99       | 88       | 87       | 109      |
| <b>Balance of State</b> | 2        | 3        | 6        | 8        | 9        | 3        |
| <b>Statewide</b>        | 94       | 91       | 105      | 96       | 96       | 112      |

**Percent of Participants with Ongoing Extensions  
June 2001 - December 2007**



**Number of Ongoing Extensions - Most Recent Six Months**

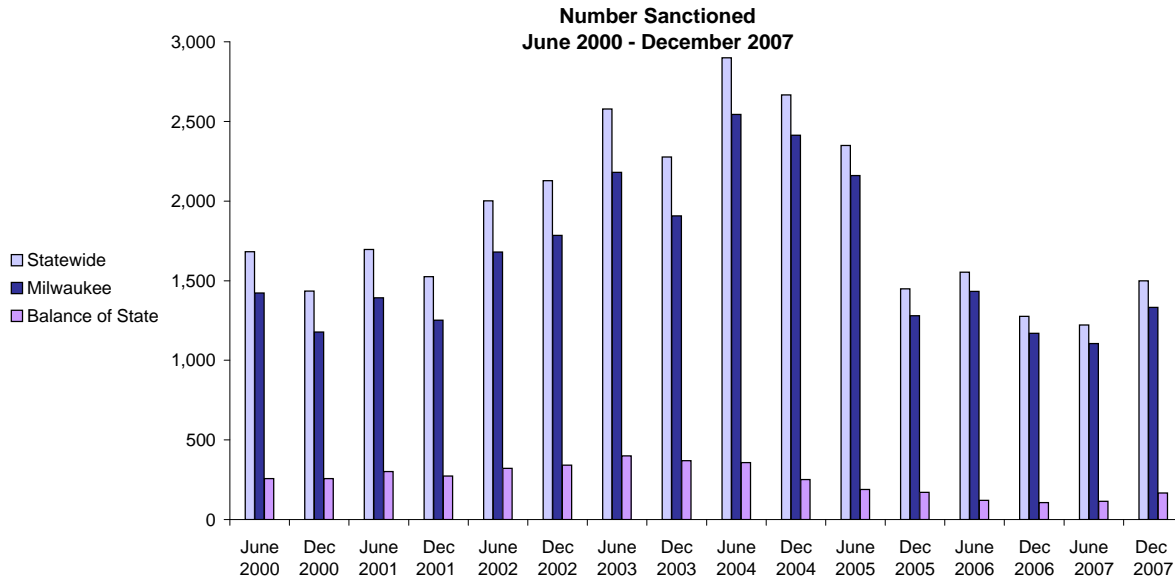
|                         | Dec 2007 | Jan 2008 | Feb 2008 | Mar 2008 | Apr 2008 | May 2008 |
|-------------------------|----------|----------|----------|----------|----------|----------|
| <b>Milwaukee County</b> | 517      | 499      | 500      | 480      | 478      | 476      |
| <b>Balance of State</b> | 24       | 21       | 21       | 21       | 24       | 22       |
| <b>Statewide</b>        | 541      | 520      | 521      | 501      | 502      | 498      |

Source: CARES, Bureau of Program Services & Statistics, Division of Family Supports, Department of Workforce Development.

Note: Extensions can be granted after 60 months of lifetime participation. Extensions are granted when the participant is nearing the 60th month of their lifetime clock and they qualify for extended eligibility by meeting specific required criteria. The 60- month extensions first became relevant as of September 2001.

\* Participants may be counted more than once if the participant's extension lasts longer than six months. Ongoing Extensions are an end of the month count.

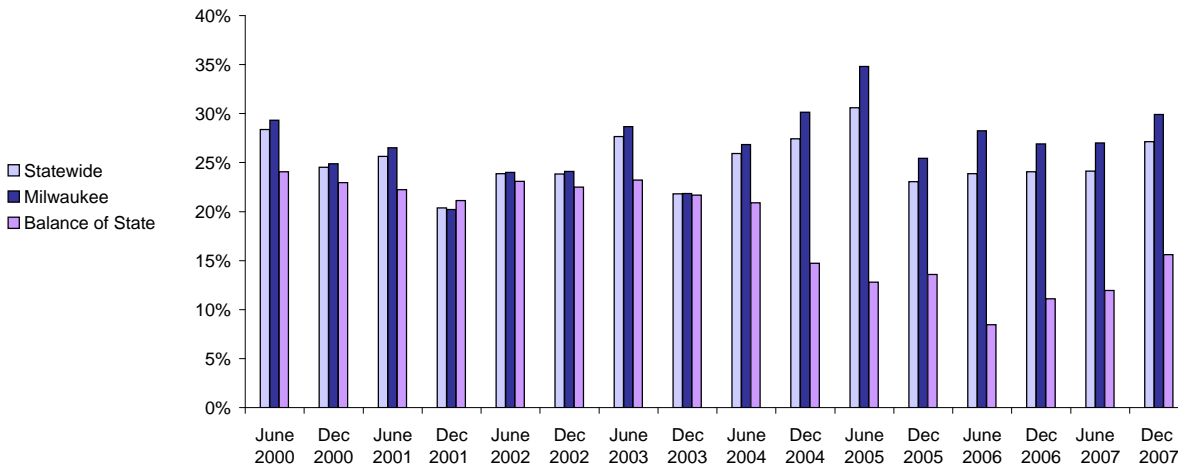
## W-2T and CSJ Participants Who Were Sanctioned



**Number Sanctioned - Most Recent Six Months**

|                         | Dec 2007 | Jan 2008 | Feb 2008 | Mar 2008 | Apr 2008 | May 2008 |
|-------------------------|----------|----------|----------|----------|----------|----------|
| <b>Milwaukee County</b> | 1,333    | 1,491    | 1,757    | 1,515    | 1,484    | 1,451    |
| <b>Balance of State</b> | 167      | 175      | 207      | 188      | 200      | 209      |
| <b>Statewide</b>        | 1,500    | 1,666    | 1,964    | 1,703    | 1,684    | 1,660    |

**Percent Sanctioned  
June 2000 - December 2007**



**Percent Sanctioned - Most Recent Six Months**

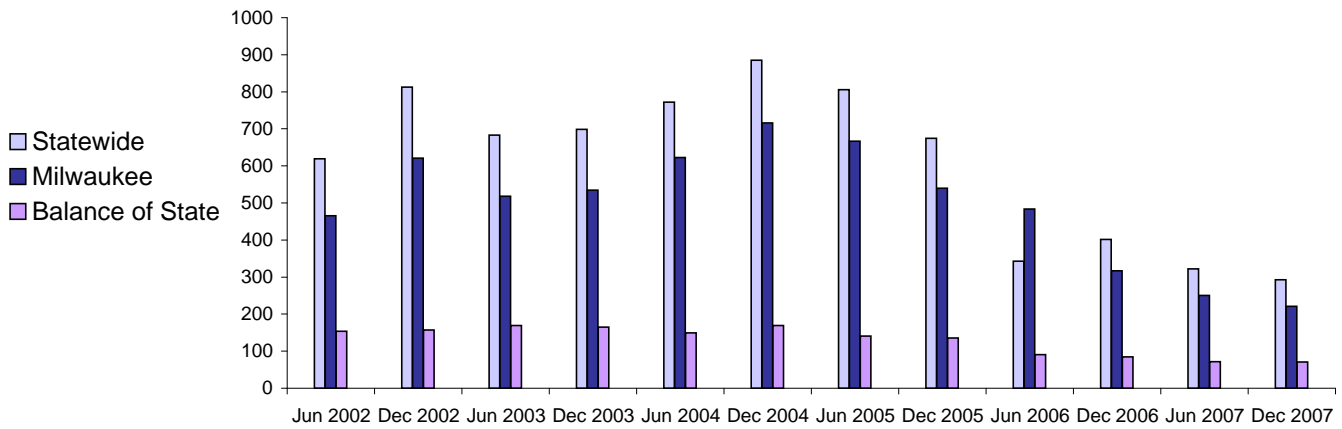
|                         | Dec 2007 | Jan 2008 | Feb 2008 | Mar 2008 | Apr 2008 | May 2008 |
|-------------------------|----------|----------|----------|----------|----------|----------|
| <b>Milwaukee County</b> | 30%      | 34%      | 40%      | 35%      | 34%      | 34%      |
| <b>Balance of State</b> | 16%      | 16%      | 19%      | 17%      | 17%      | 18%      |
| <b>Statewide</b>        | 27%      | 30%      | 36%      | 31%      | 31%      | 30%      |

Source: CARES, Bureau of Program Services & Statistics, Division of Family Supports, Department of Workforce Development.

Note: Because sanction counts prior to September 1999 were counted differently they are not included in these graphs. The graphs on this page report information on the sanctionable population (W-2T and CSJ placements only). The data represented here are point in time during a month.

# Entered Employments of W-2 Participants

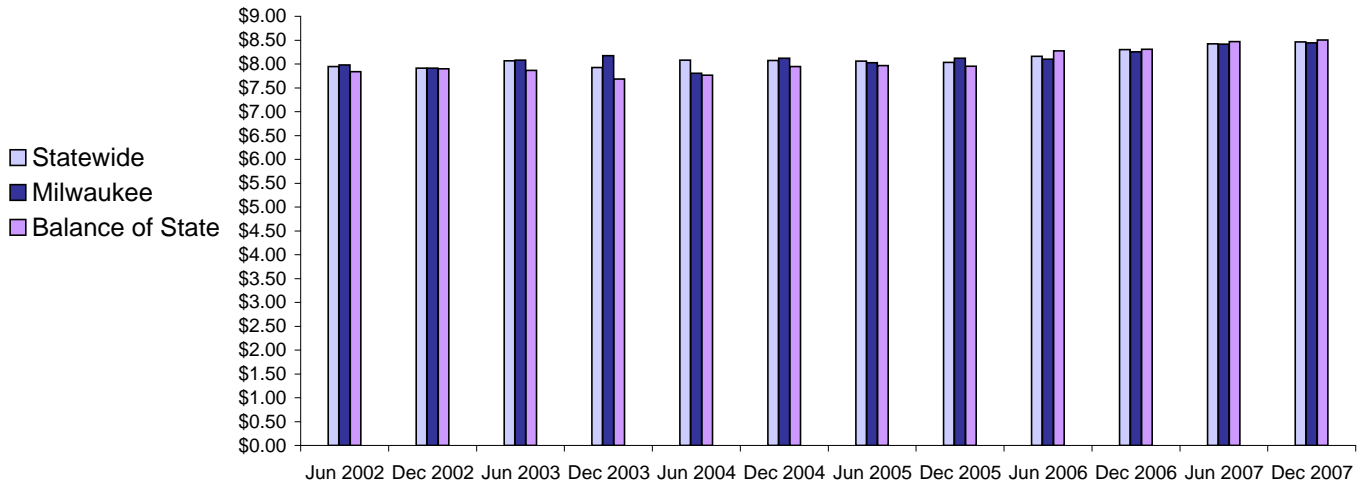
Six Month Average Number Entered Employment\*  
June 2002-December 2007



Total Number Of Entered Employments - Most Recent Six Months

|                         | Dec 2007 | Jan 2008 | Feb 2008 | Mar 2008 | Apr 2008 | May 2008 |
|-------------------------|----------|----------|----------|----------|----------|----------|
| <b>Milwaukee County</b> | 146      | 240      | 179      | 272      | 267      | 242      |
| <b>Balance of State</b> | 38       | 56       | 59       | 68       | 90       | 88       |
| <b>Statewide</b>        | 184      | 296      | 238      | 340      | 357      | 330      |

Six Month Average Hourly Wage\*  
June 2002 - December 2007



Average Hourly Wage - Most Recent Six Months

|                         | Dec 2007 | Jan 2008 | Feb 2008 | Mar 2008 | Apr 2008 | May 2008 |
|-------------------------|----------|----------|----------|----------|----------|----------|
| <b>Milwaukee County</b> | \$8.57   | \$8.60   | \$8.66   | \$8.40   | \$8.40   | \$8.57   |
| <b>Balance of State</b> | \$8.55   | \$9.08   | \$8.38   | \$9.17   | \$8.52   | \$8.46   |
| <b>Statewide</b>        | \$8.56   | \$8.69   | \$8.60   | \$8.55   | \$8.43   | \$8.54   |

Source: CARES, Bureau of Program Services & Statistics, Division of Family Supports, Department of Workforce Development.  
 Note: Entered Employment is a W-2 program performance measure counted when a participant obtains or increases wages in a new job. Entered Employment of less than 30 days are excluded. Wage data are reported for jobs with hourly wages  
 \*Average number entered employment per month for the six month period ending in June or December.