

Wisconsin Works (W-2) Critical Indicators



**March
2008**

Bureau of Program Services & Statistics
Division of Family Supports
Department of Workforce Development



State of Wisconsin

Wisconsin W-2 Participants in Paid Placements*

Number of Participants in Paid Placements

	One Year Ago	Last Month	This Month	Change in Most Recent Two Months	
	Mar 2007	Feb 2008	Mar 2008	Number	Percent
Paid Participants:					
Milwaukee County	4,367	4,635	4,541	-94	-2.0%
Balance of State	1,680	1,785	1,832	47	2.6%
Statewide Caseload	6,047	6,420	6,373	-47	-0.7%
Milwaukee County Regions:	Mar 2007	Feb 2008	Mar 2008	Number	Percent
Milwaukee NE YWCA	519	516	532	16	3.1%
Milwaukee SE UMOS	706	755	761	6	0.8%
Milwaukee Central UMOS	1,077	1,234	1,196	-38	-3.1%
Milwaukee NW MAXIMUS	1,024	988	953	-35	-3.5%
Milwaukee SW MAXIMUS	656	719	686	-33	-4.6%
Milwaukee SSI-Adv UMOS	384	423	406	-17	-4.0%
Milwaukee County Total*:	4,367	4,635	4,541	-94	-2.0%

Source: CARES, Bureau of Program Services & Statistics, Division of Family Supports, Department of Workforce Development.

*Note: Milwaukee County total includes a small number of cases served by Milwaukee County Department of Social Services.

Note: The paid caseload includes the following categories of placements:

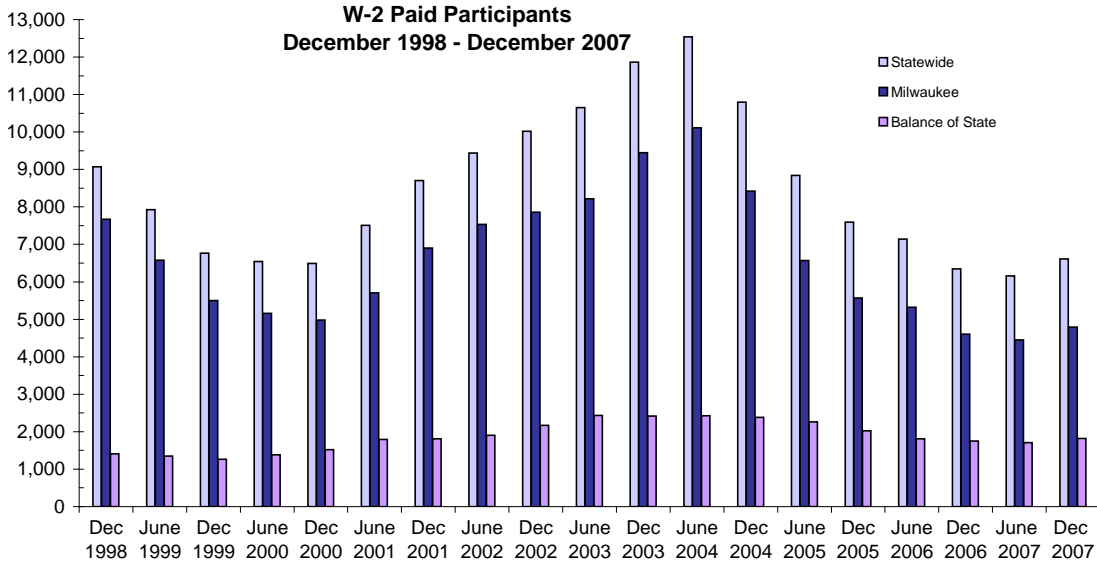
W-2 Transition (W-2T)..... A W-2 work-readiness practice placement for individuals who are unable to perform independent, self-sustaining work, but who are able to participate in work practice or other developmental activities and training up to their abilities.

Community Service Job (CSJ)..... A W-2 work-readiness practice placement designed to improve the employability of participants by providing work experience and training in the public and private sectors.

Trial Job (TJB)..... A W-2 subsidized employment position that provides work experience and training which may become permanent, unsubsidized employment. Paid directly to the employer.

Caretaker of Newborn (CMC)..... A custodial parent of a child who is 12 weeks old or less and who meets the financial and non-financial eligibility requirements for W-2 employment positions.

W-2 Paid Participants and Benefits Paid

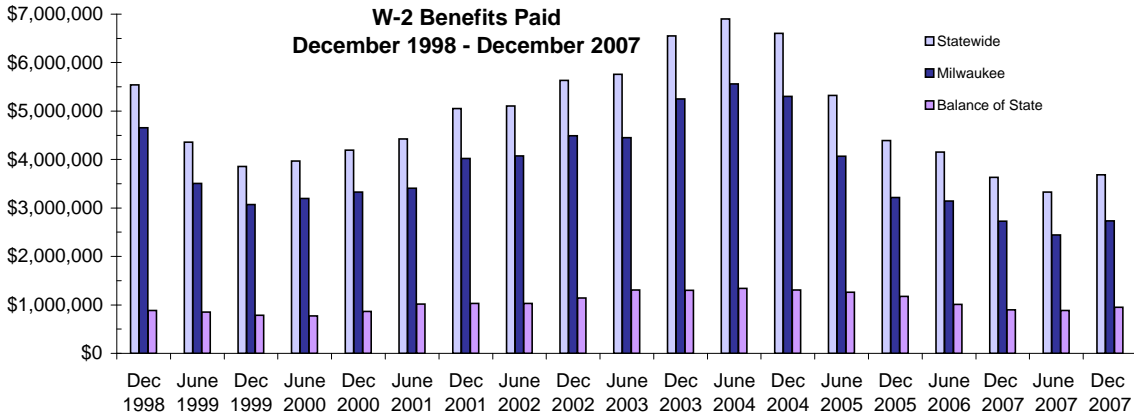


W-2 Paid Participants - Most Recent Six Months

	Oct 2007	Nov 2007	Dec 2007	Jan 2008	Feb 2008	Mar 2008
Milwaukee County	4,856	4,853	4,791	4,802	4,635	4,541
Balance of State	1,890	1,859	1,816	1,832	1,785	1,832
Statewide	6,746	6,712	6,607	6,634	6,420	6,373

Source: CARES, Bureau of Program Services & Statistics, Division of Family Supports, Department of Workforce Development

Note: The paid participants included in this count are participants who were in a paid placement during the report month.



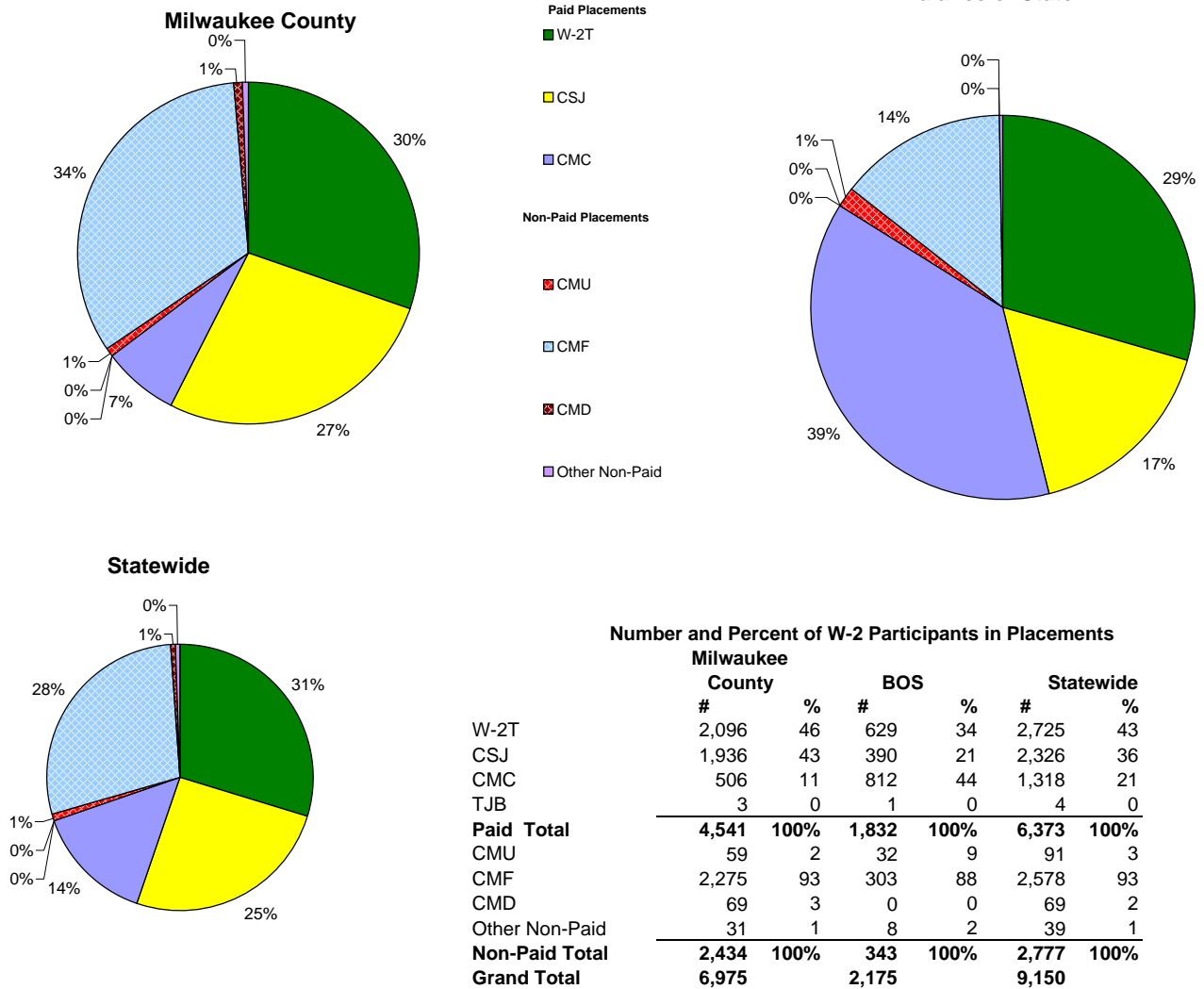
W-2 Benefits Paid - Most Recent Six Months

	Oct 2007	Nov 2007	Dec 2007	Jan 2008	Feb 2008	Mar 2008
Milwaukee County	\$2,711,575	\$2,826,387	\$2,735,420	\$2,753,688	\$2,686,969	\$2,518,869
Balance of State	\$963,657	\$988,982	\$649,575	\$939,844	\$955,968	\$926,345
Statewide	\$3,675,232	\$3,815,369	\$3,684,995	\$3,693,532	\$3,642,937	\$3,445,214

Source: CARES, Bureau of Program Services & Statistics, Division of Family Supports, Department of Workforce Development

Note: The benefits paid are the total monthly net benefits after sanctions and recoupments are applied.

Placement of W-2 Participants, March 2008

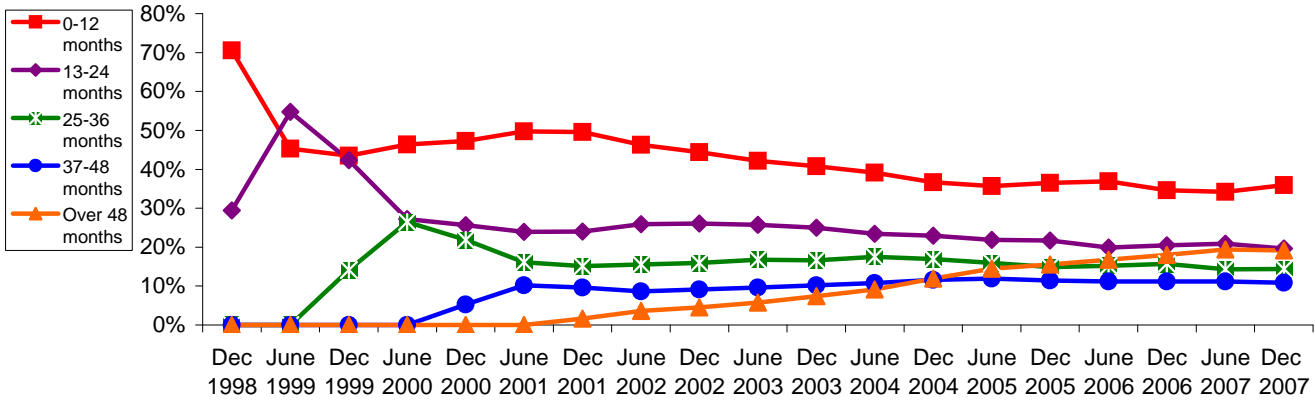


Source: CARES, Bureau of Program Services & Statistics, Division of Family Supports, Department of Workforce Development.

- Note: W-2 Transition (W-2T)..... A W-2 work-readiness practice placement for individuals who are unable to perform independent, self-sustaining work, but who are able to participate in work practice or other developmental activities and training up to their abilities.
- Community Service Job (CSJ)..... A W-2 work-readiness practice placement designed to improve the employability of participants by providing work experience and training in the public and private sectors.
- Trial Job (TJB)..... A W-2 subsidized employment position that provides work experience and training which may become permanent, unsubsidized employment. Subsidy is paid directly to the employer.
- Case Mgmt - Caretaker of a Newborn (CMC)..... A custodial parent of a child who is 12 weeks old or less and who meets the financial and non-financial eligibility requirements for W-2 employment positions.
- Case Mgmt - Pregnancy (CMP)..... A participant with a medically verified pregnancy.
- Case Mgmt - Follow - Up (CMF)..... Used for Placement for Individuals who move from a W-2 benefit Placement to unsubsidized employment.
- Case Mgmt- Denied Extension CMD)..... Participants who exhausted time-limited benefits but are receiving services.
- Case Mgmt - Service for Working (CMU)..... Used for individuals working in unsubsidized employment who are without barriers to full-time employment.
- Case Mgmt - Non-Custodial Parent (CMN)..... Used for case management services for non-custodial parents.
- Case Mgmt - Minor Parent (CMM)..... Used for case management services for a custodial minor parent.

Number of Months Served in W-2 *

Percentage Distribution- Statewide December 1998- December 2007

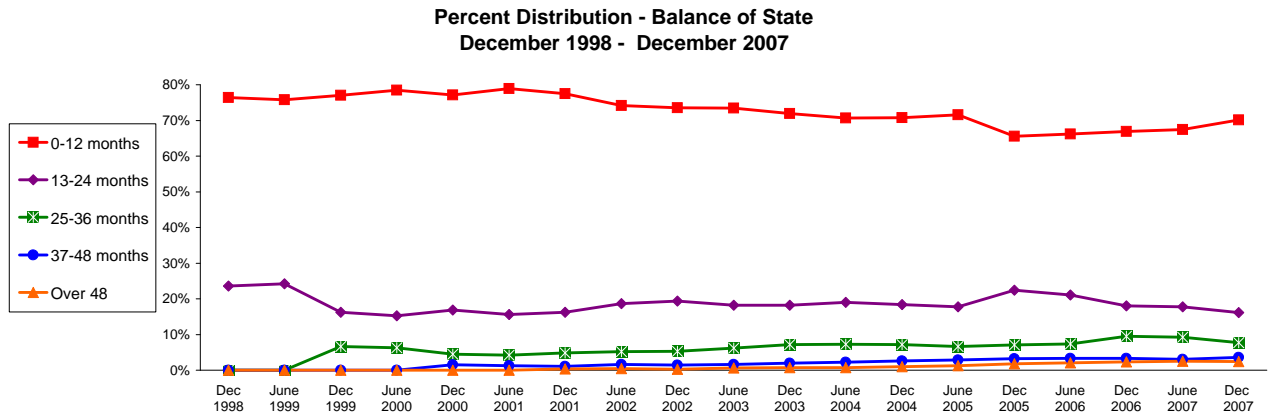
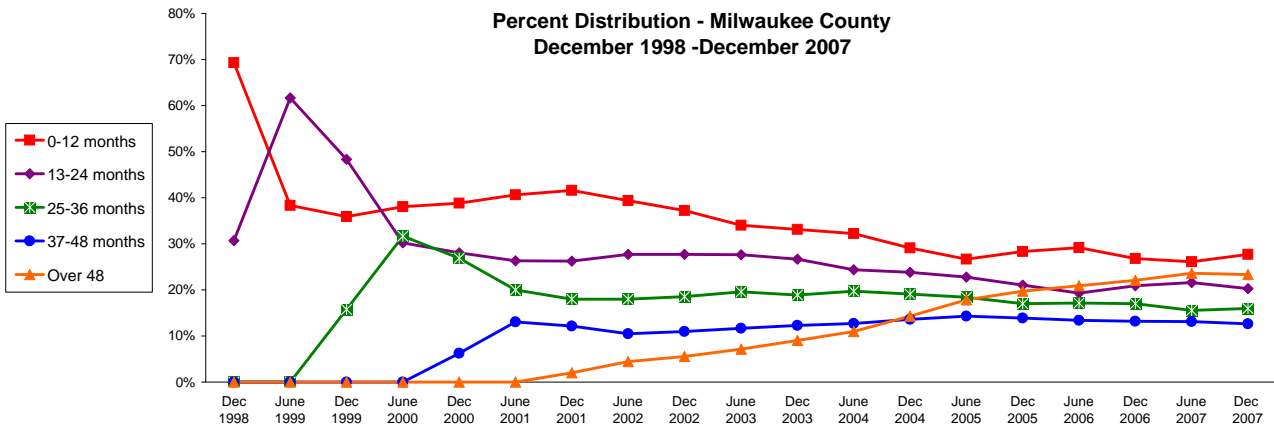


Source: CARES, Bureau of Program Services & Statistics, Division of Family Supports, Department of Workforce Development.
 * Note: Length of stay is determined for the W-2 participants in the report month by the number of total months a participant has been in W-2 since the beginning of the program.

Number of Months Served in W-2 - Most Recent Six Months

	Months	Oct 2007	Nov 2007	Dec 2007	Jan 2008	Feb 2008	Mar 2008
Milwaukee County	0-12	2,264	2,221	2,183	2,236	2,152	2,129
	13-24	1,675	1,661	1,600	1,603	1,497	1,425
	25-36	1,301	1,273	1,261	1,199	1,085	1,080
	37-48	1,046	1,013	997	954	895	813
	Over 48	1,865	1,851	1,839	1,842	1,704	1,619
Balance of State	0-12	1,774	1,730	1,656	1,639	1,599	1,638
	13-24	402	390	382	385	368	366
	25-36	196	189	183	181	185	184
	37-48	77	78	84	76	75	76
	Over 48	56	55	57	57	58	56
Statewide	0-12	3,789	3,701	3,591	3,624	3,514	3,527
	13-24	2,058	2,037	1,962	1,966	1,843	1,771
	25-36	1,484	1,446	1,439	1,375	1,271	1,262
	37-48	1,132	1,100	1,086	1,039	982	903
	Over 48	1,937	1,922	1,911	1,913	1,773	1,687

Number of Months Served in W-2* , Continued

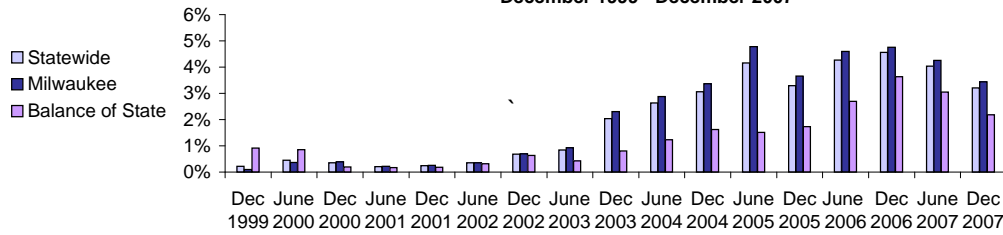


Source: CARES, Bureau of Program Services & Statistics, Division of Family Services, Department of Workforce Development.

* Length of stay is determined for the W-2 participants in the report month by the number of total months a participant has been in W-2 since the beginning of the program. Participants may be counted more than once if their geographic location changes from Milwaukee to Balance of State or vice versa.

Extensions Granted for 24 - Month Clocks*

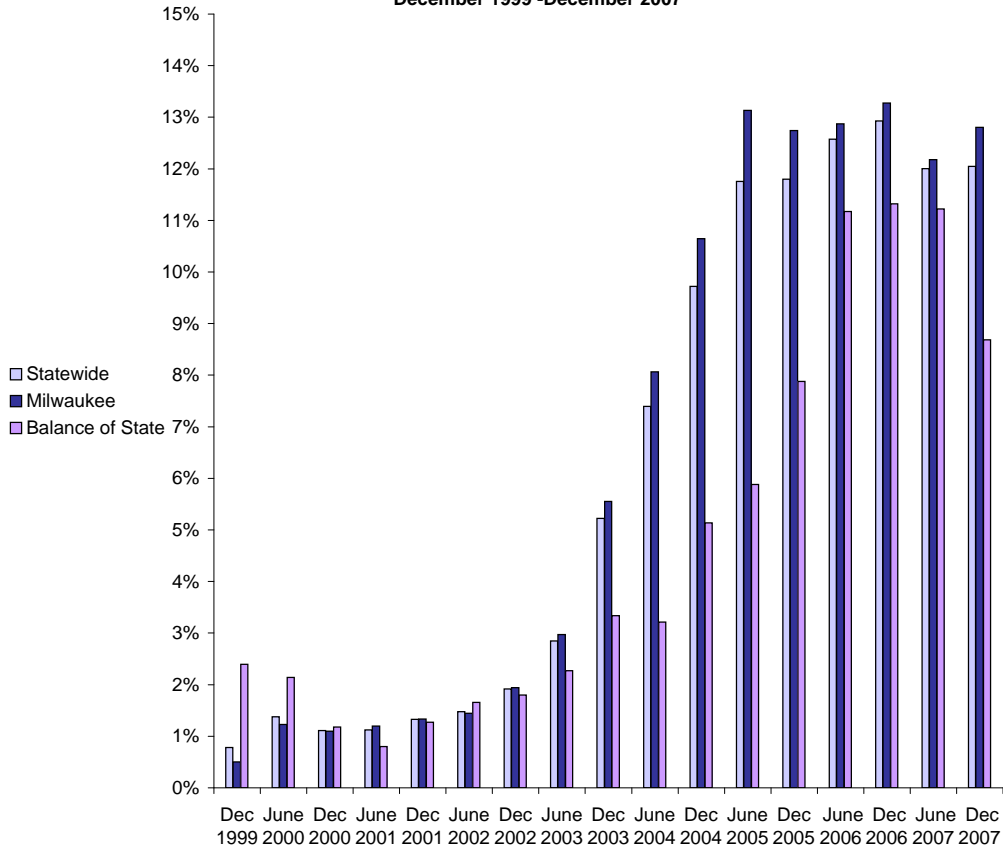
**Percent of W-2T & CSJ Participants with Beginning Extensions
December 1999 - December 2007**



Number of Beginning Extensions - Most Recent Six Months

	Oct 2007	Nov 2007	Dec 2007	Jan 2008	Feb 2008	Mar 2008
Milwaukee County	184	182	143	157	141	150
Balance of State	13	25	21	22	20	29
Statewide	197	207	164	179	161	179

**Percent of W-2T & CSJ Participants with Ongoing Extensions
December 1999 - December 2007**



Number of Ongoing Extensions - Most Recent Six Months

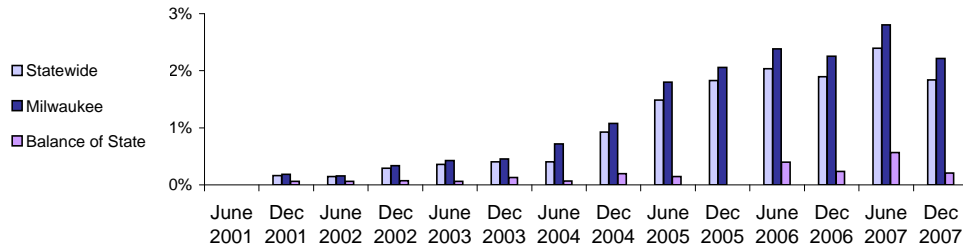
	Oct 2007	Nov 2007	Dec 2007	Jan 2008	Feb 2008	Mar 2008
Milwaukee County	527	513	498	475	464	463
Balance of State	66	72	76	82	79	86
Statewide	593	585	574	557	543	549

Source: CARES, Bureau of Program Services & Statistics, Division of Family Supports, Department of Workforce Development.

* Extensions can be granted after 24 months of participation in a W-2T or CSJ placement. Extensions are granted when the participant is nearing the 24th month of their placement clock and they qualify for extended eligibility by meeting specific required criteria. Participants may be counted more than once if the participant's extension lasts longer than six months. Ongoing extensions are an end of the month count.

Extensions Granted for 60- Month Clocks*

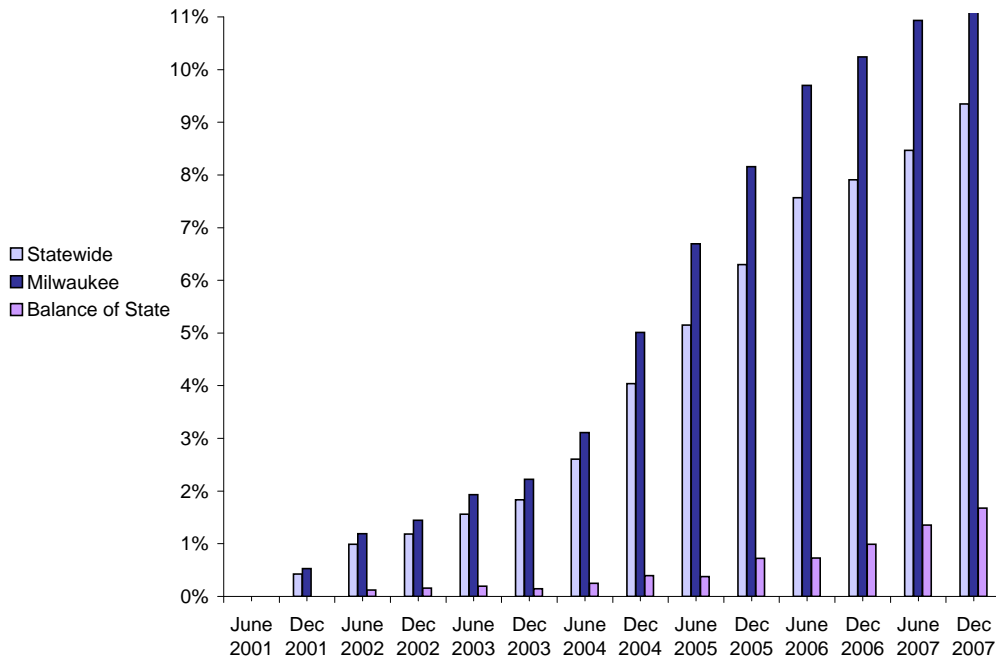
**Percent of Participants with Beginning Extensions
June 2001 - December 2007**



Number of Beginning Extensions - Most Recent Six Months

	Oct 2007	Nov 2007	Dec 2007	Jan 2008	Feb 2008	Mar 2008
Milwaukee County	107	114	92	88	99	88
Balance of State	8	4	2	3	6	8
Statewide	115	118	94	91	105	96

**Percent of Participants with Ongoing Extensions
June 2001 - December 2007**



Number of Ongoing Extensions - Most Recent Six Months

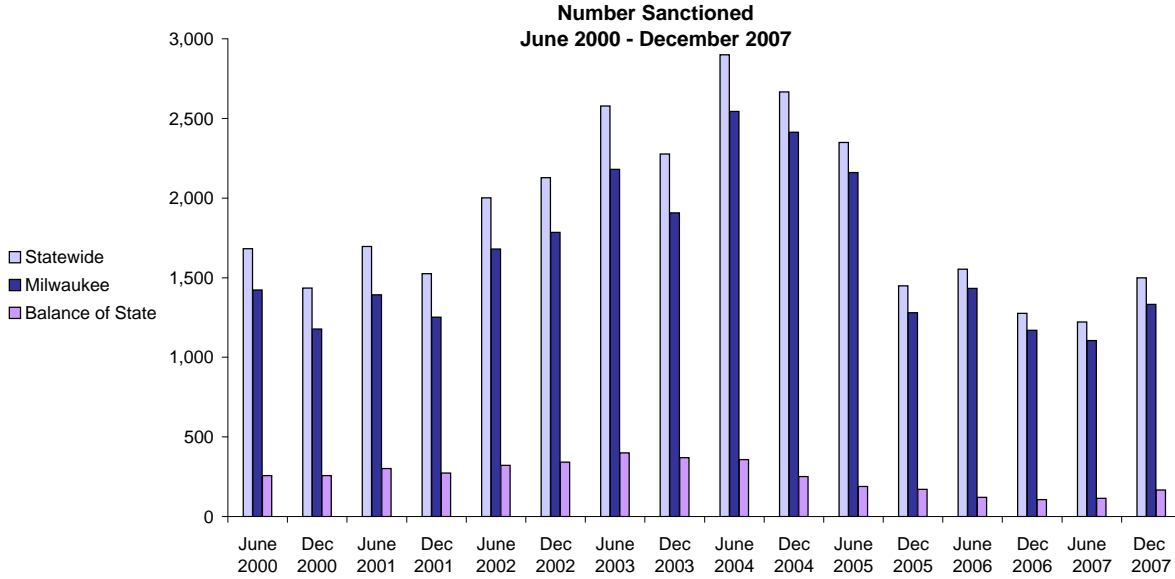
	Oct 2007	Nov 2007	Dec 2007	Jan 2008	Feb 2008	Mar 2008
Milwaukee County	503	528	517	499	500	480
Balance of State	22	24	24	21	21	21
Statewide	525	552	541	520	521	501

Source: CARES, Bureau of Program Services & Statistics, Division of Family Supports, Department of Workforce Development.

Note: Extensions can be granted after 60 months of lifetime participation. Extensions are granted when the participant is nearing the 60th month of their lifetime clock and they qualify for extended eligibility by meeting specific required criteria. The 60-month extensions first became relevant as of September 2001.

* Participants may be counted more than once if the participant's extension lasts longer than six months. Ongoing Extensions are an end of the month count.

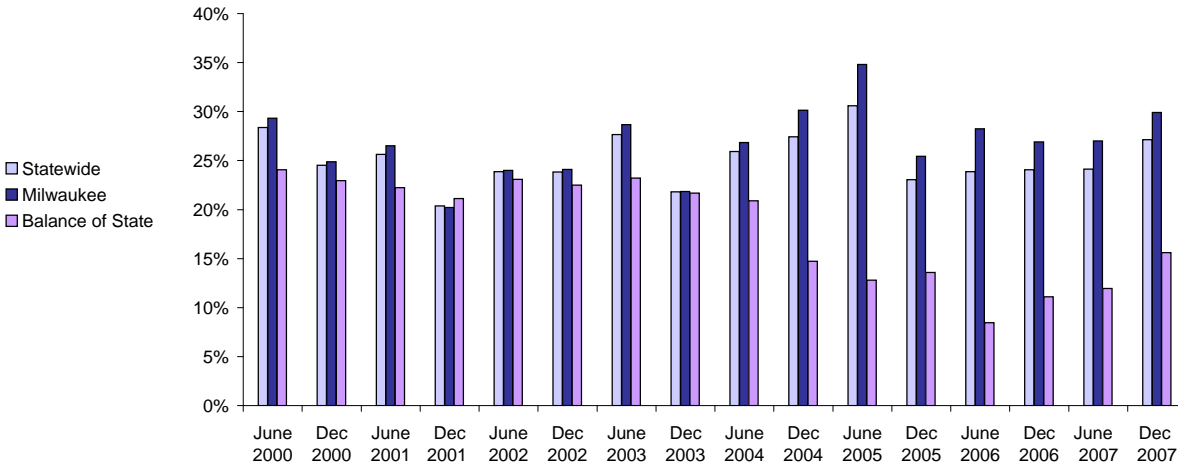
W-2T and CSJ Participants Who Were Sanctioned



Number Sanctioned - Most Recent Six Months

	Oct 2007	Nov 2007	Dec 2007	Jan 2008	Feb 2008	Mar 2008
Milwaukee County	1,182	1,320	1,333	1,491	1,757	1,515
Balance of State	185	180	167	175	207	188
Statewide	1,367	1,500	1,500	1,666	1,964	1,703

**Percent Sanctioned
June 2000 - December 2007**



Percent Sanctioned - Most Recent Six Months

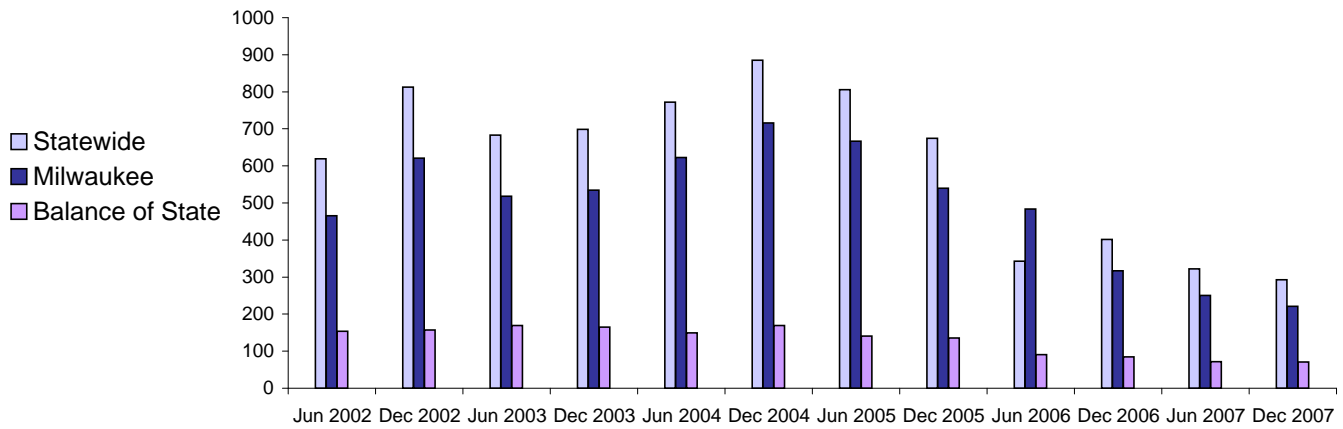
	Oct 2007	Nov 2007	Dec 2007	Jan 2008	Feb 2008	Mar 2008
Milwaukee County	26%	29%	30%	34%	40%	35%
Balance of State	17%	17%	16%	16%	19%	17%
Statewide	24%	27%	27%	30%	36%	31%

Source: CARES, Bureau of Program Services & Statistics, Division of Family Supports, Department of Workforce Development.

Note: Because sanction counts prior to September 1999 were counted differently they are not included in these graphs. The graphs on this page report information on the sanctionable population (W-2T and CSJ placements only). The data represented here are point in time during a month.

Entered Employments of W-2 Participants

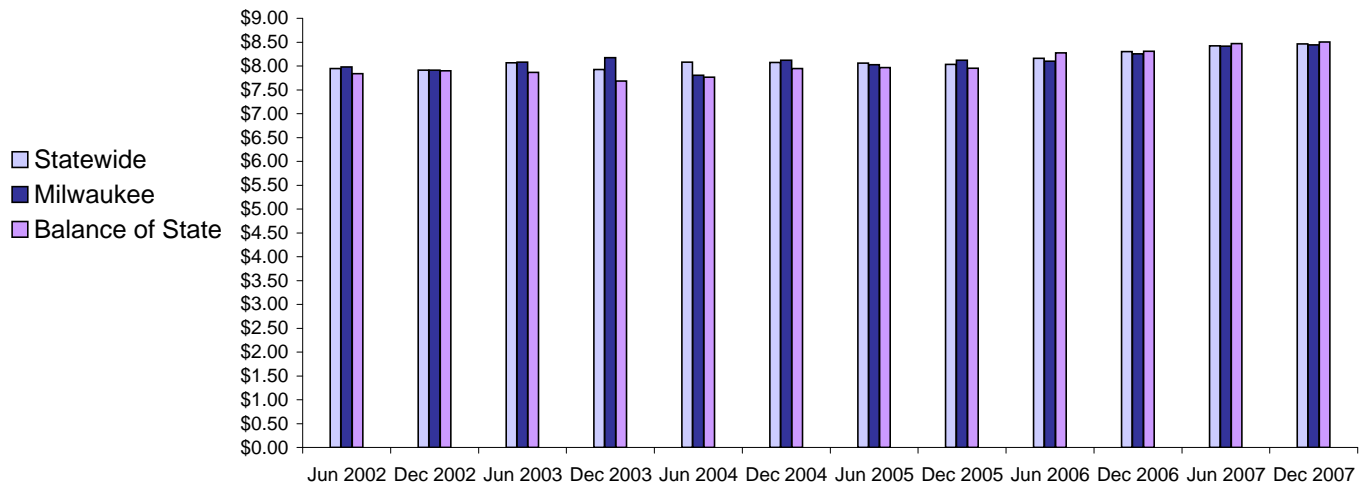
Six Month Average Number Entered Employment*
June 2002-December 2007



Total Number Of Entered Employments - Most Recent Six Months

	Oct 2007	Nov 2007	Dec 2007	Jan 2008	Feb 2008	Mar 2008
Milwaukee County	298	202	146	240	179	272
Balance of State	105	55	38	56	59	68
Statewide	403	257	184	296	238	340

Six Month Average Hourly Wage*
June 2002 - December 2007



Average Hourly Wage - Most Recent Six Months

	Oct 2007	Nov 2007	Dec 2007	Jan 2008	Feb 2008	Mar 2008
Milwaukee County	\$8.57	\$8.74	\$8.57	\$8.60	\$8.66	\$8.40
Balance of State	\$8.51	\$8.17	\$8.55	\$9.08	\$8.38	\$9.17
Statewide	\$8.55	\$8.62	\$8.56	\$8.69	\$8.60	\$8.55

Source: CARES, Bureau of Program Services & Statistics, Division of Family Supports, Department of Workforce Development.
 Note: Entered Employment is a W-2 program performance measure counted when a participant obtains or increases wages in a new job. Entered Employment of less than 30 days are excluded. Wage data are reported for jobs with hourly wages
 *Average number entered employment per month for the six month period ending in June or December.