

# Wisconsin Works (W-2) Critical Indicators



**February  
2008**

Bureau of Program Services & Statistics  
Division of Family Supports  
Department of Workforce Development



State of Wisconsin

## Wisconsin W-2 Participants in Paid Placements\*

### Number of Participants in Paid Placements

	One Year Ago	Last Month	This Month	Change in Most Recent Two Months	
	Feb 2007	Jan 2008	Feb 2008	Number	Percent
<b>Paid Participants:</b>					
Milwaukee County	4,408	4,802	4,635	-167	-3.5%
Balance of State	1,715	1,832	1,785	-47	-2.6%
Statewide Caseload	6,123	6,634	6,420	-214	-3.2%
<b>Milwaukee County Regions:</b>	<b>Feb 2007</b>	<b>Jan 2008</b>	<b>Feb 2008</b>	<b>Number</b>	<b>Percent</b>
Milwaukee NE YWCA	531	553	516	-37	-6.7%
Milwaukee SE UMOS	713	801	755	-46	-5.7%
Milwaukee Central UMOS	1,063	1,278	1,234	-44	-3.4%
Milwaukee NW MAXIMUS	1,057	1,033	988	-45	-4.4%
Milwaukee SW MAXIMUS	678	714	719	5	0.7%
Milwaukee SSI-Adv UMOS	365	423	423	0	0.0%
<b>Milwaukee County Total*:</b>	<b>4,408</b>	<b>4,802</b>	<b>4,635</b>	<b>-167</b>	<b>-3.5%</b>

Source: CARES, Bureau of Program Services & Statistics, Division of Family Supports, Department of Workforce Development.

\*Note: Milwaukee County total includes a small number of cases served by Milwaukee County Department of Social Services.

Note: The paid caseload includes the following categories of placements:

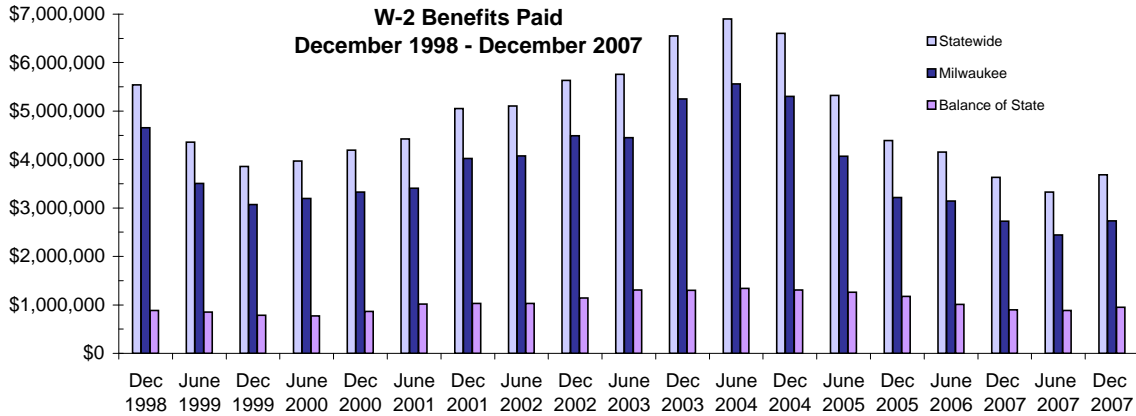
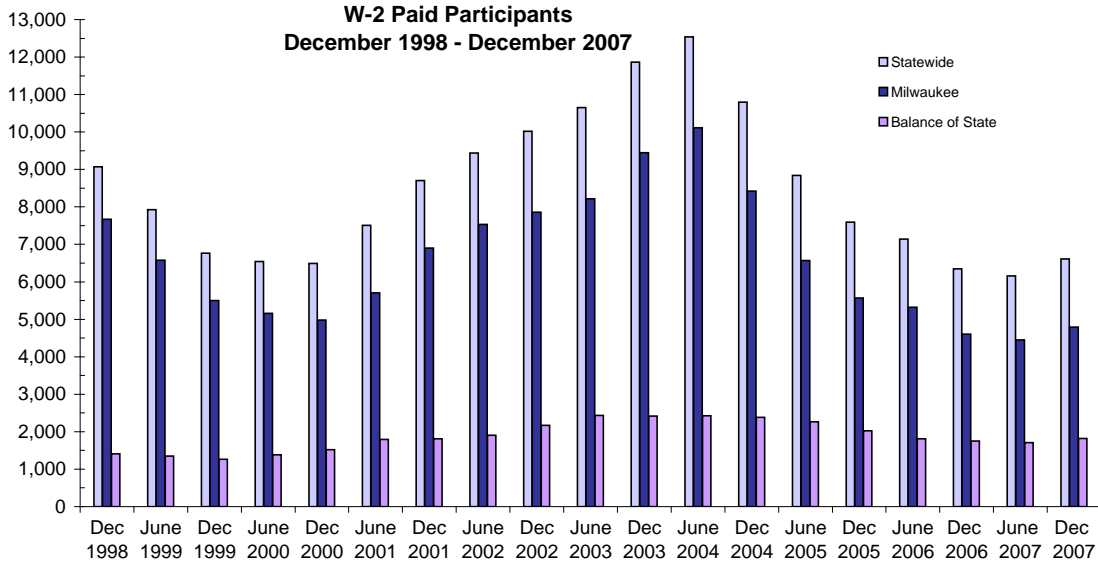
W-2 Transition (W-2T)..... A W-2 work-readiness practice placement for individuals who are unable to perform independent, self-sustaining work, but who are able to participate in work practice or other developmental activities and training up to their abilities.

Community Service Job (CSJ)..... A W-2 work-readiness practice placement designed to improve the employability of participants by providing work experience and training in the public and private sectors.

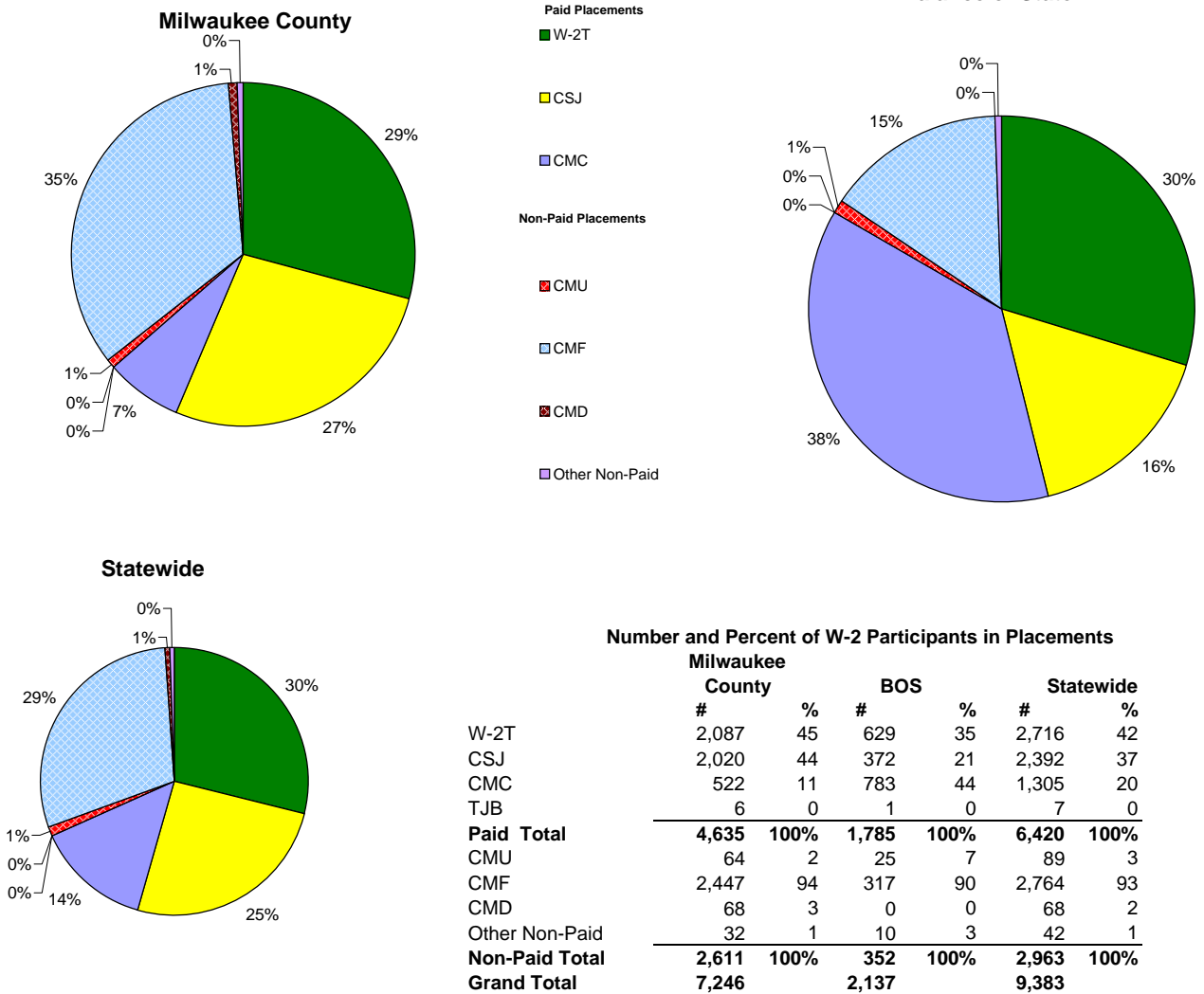
Trial Job (TJB)..... A W-2 subsidized employment position that provides work experience and training which may become permanent, unsubsidized employment. Paid directly to the employer.

Caretaker of Newborn (CMC)..... A custodial parent of a child who is 12 weeks old or less and who meets the financial and non-financial eligibility requirements for W-2 employment positions.

## W-2 Paid Participants and Benefits Paid



## Placement of W-2 Participants, February 2008

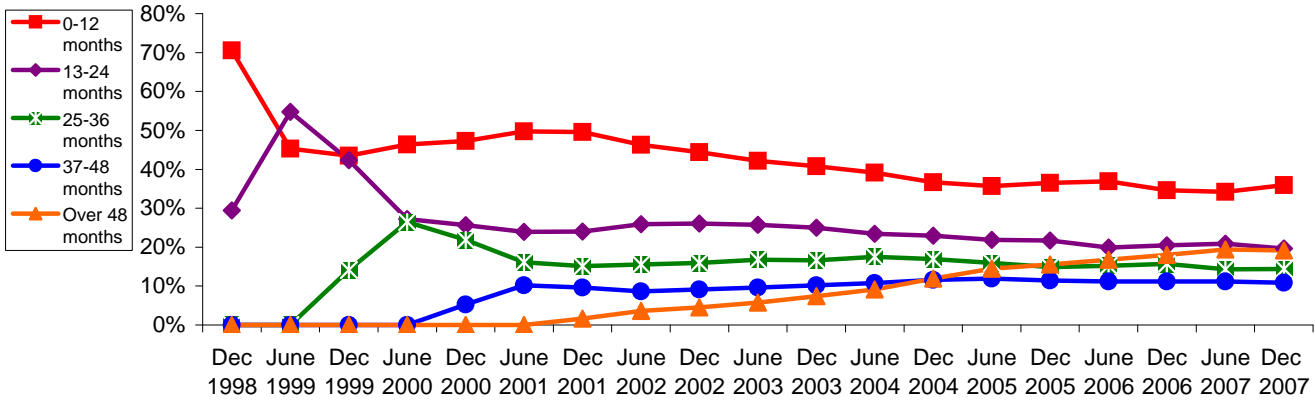


Source: CARES, Bureau of Program Services & Statistics, Division of Family Supports, Department of Workforce Development.

- Note: W-2 Transition (W-2T)..... A W-2 work-readiness practice placement for individuals who are unable to perform independent, self-sustaining work, but who are able to participate in work practice or other developmental activities and training up to their abilities.
- Community Service Job (CSJ)..... A W-2 work-readiness practice placement designed to improve the employability of participants by providing work experience and training in the public and private sectors.
- Trial Job (TJB)..... A W-2 subsidized employment position that provides work experience and training which may become permanent, unsubsidized employment. Subsidy is paid directly to the employer.
- Case Mgmt - Caretaker of a Newborn (CMC)..... A custodial parent of a child who is 12 weeks old or less and who meets the financial and non-financial eligibility requirements for W-2 employment positions.
- Case Mgmt - Pregnancy (CMP)..... A participant with a medically verified pregnancy.
- Case Mgmt - Follow - Up ( CMF )..... Used for Placement for Individuals who move from a W-2 benefit Placement to unsubsidized employment.
- Case Mgmt- Denied Extension CMD)..... Participants who exhausted time-limited benefits but are receiving services.
- Case Mgmt - Service for Working (CMU)..... Used for individuals working in unsubsidized employment who are without barriers to full-time employment.
- Case Mgmt - Non-Custodial Parent (CMN)..... Used for case management services for non-custodial parents.
- Case Mgmt - Minor Parent (CMM)..... Used for case management services for a custodial minor parent.

## Number of Months Served in W-2 \*

### Percentage Distribution- Statewide December 1998- December 2007

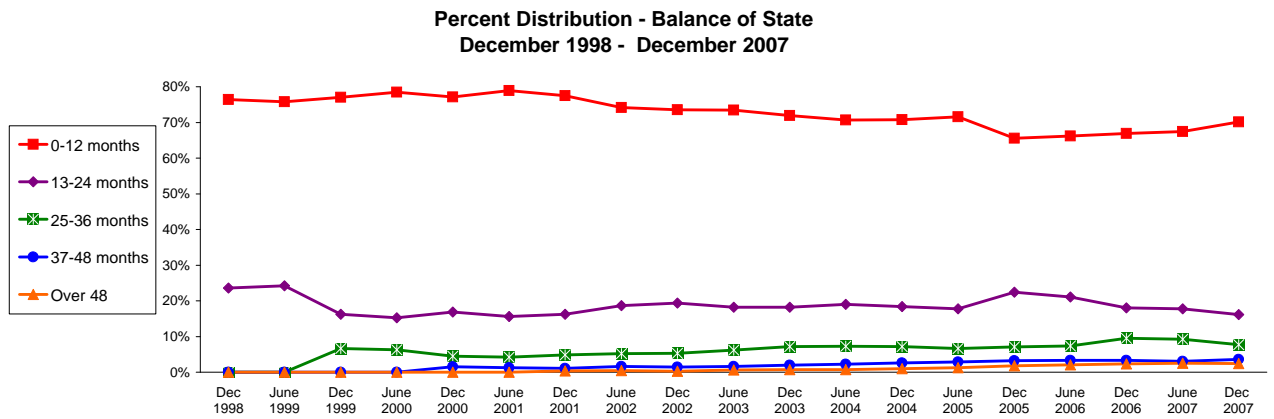
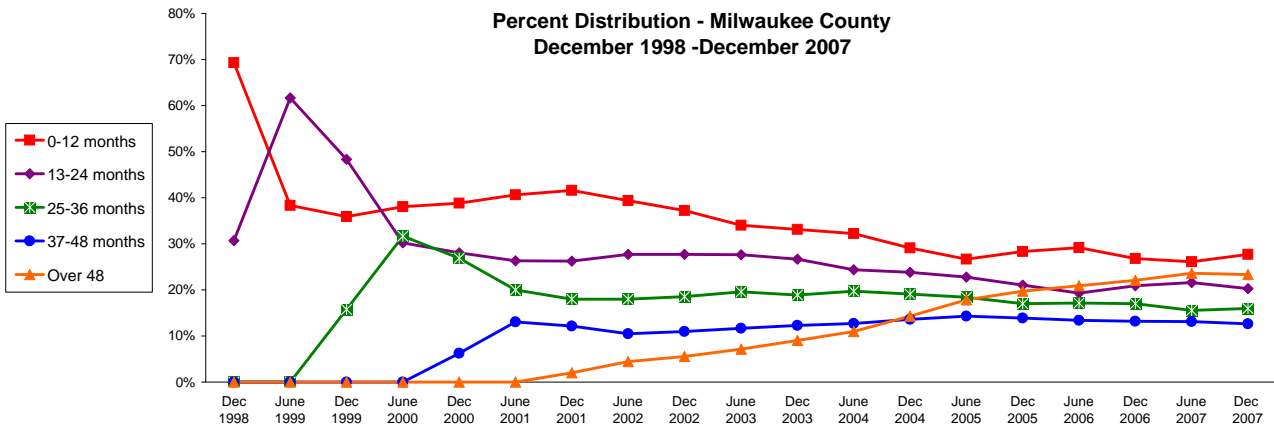


Source: CARES, Bureau of Program Services & Statistics, Division of Family Supports, Department of Workforce Development.  
 \* Note: Length of stay is determined for the W-2 participants in the report month by the number of total months a participant has been in W-2 since the beginning of the program.

### Number of Months Served in W-2 - Most Recent Six Months

	Months	Sep 2007	Oct 2007	Nov 2007	Dec 2007	Jan 2008	Feb 2008
<b>Milwaukee County</b>	0-12	2,218	2,264	2,221	2,183	2,236	2,152
	13-24	1,726	1,675	1,661	1,600	1,603	1,497
	25-36	1,269	1,301	1,273	1,261	1,199	1,085
	37-48	1,059	1,046	1,013	997	954	895
	Over 48	1,908	1,865	1,851	1,839	1,842	1,704
<b>Balance of State</b>	0-12	1,740	1,774	1,730	1,656	1,639	1,599
	13-24	381	402	390	382	385	368
	25-36	197	196	189	183	181	185
	37-48	77	77	78	84	76	75
	Over 48	59	56	55	57	57	58
<b>Statewide</b>	0-12	3,708	3,789	3,701	3,591	3,624	3,514
	13-24	2,079	2,058	2,037	1,962	1,966	1,843
	25-36	1,461	1,484	1,446	1,439	1,375	1,271
	37-48	1,148	1,132	1,100	1,086	1,039	982
	Over 48	1,980	1,937	1,922	1,911	1,913	1,773

## Number of Months Served in W-2\* , Continued

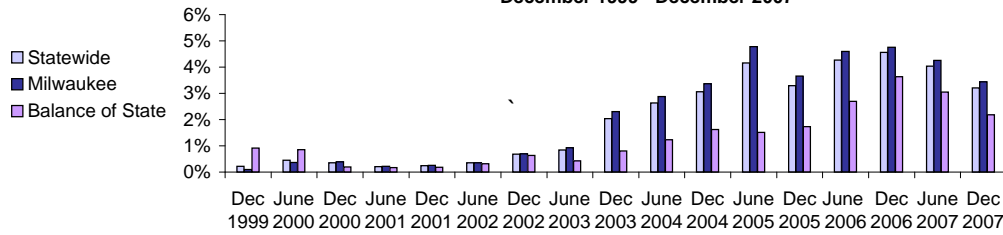


Source: CARES, Bureau of Program Services & Statistics, Division of Family Services, Department of Workforce Development.

\* Length of stay is determined for the W-2 participants in the report month by the number of total months a participant has been in W-2 since the beginning of the program. Participants may be counted more than once if their geographic location changes from Milwaukee to Balance of State or vice versa.

## Extensions Granted for 24 - Month Clocks\*

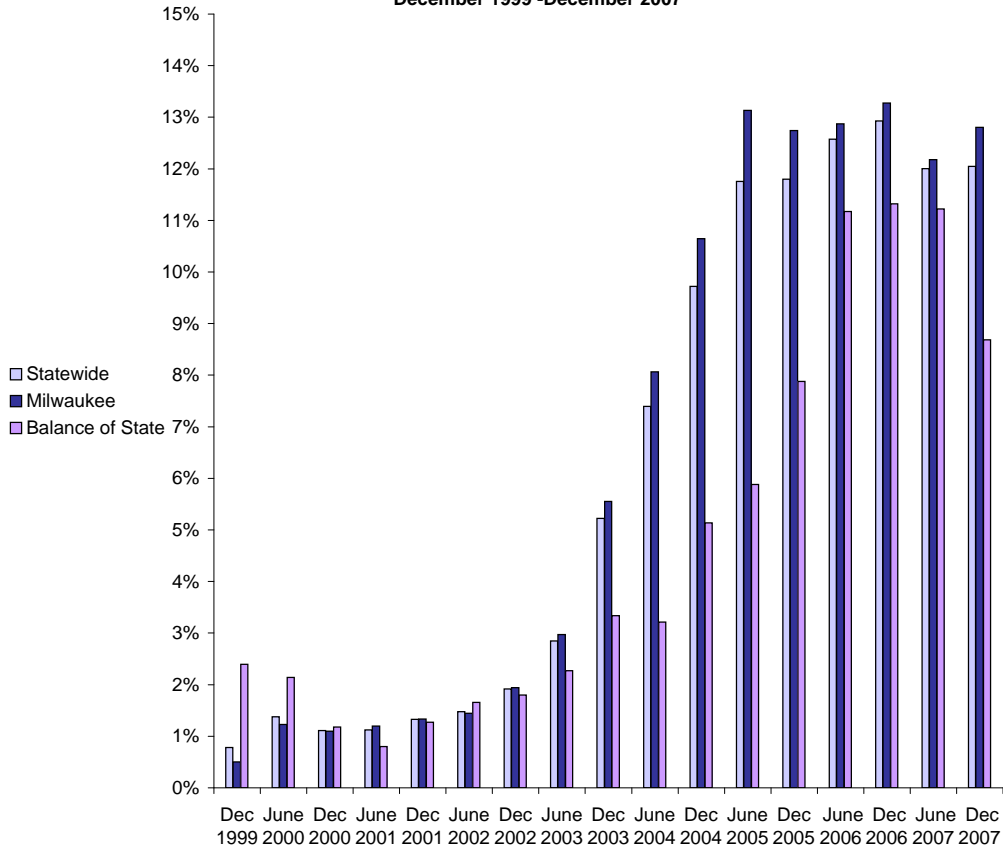
**Percent of W-2T & CSJ Participants with Beginning Extensions  
December 1999 - December 2007**



**Number of Beginning Extensions - Most Recent Six Months**

	Sep 2007	Oct 2007	Nov 2007	Dec 2007	Jan 2008	Feb 2008
<b>Milwaukee County</b>	166	184	182	143	157	141
<b>Balance of State</b>	25	13	25	21	22	20
<b>Statewide</b>	191	197	207	164	179	161

**Percent of W-2T & CSJ Participants with Ongoing Extensions  
December 1999 - December 2007**



**Number of Ongoing Extensions - Most Recent Six Months**

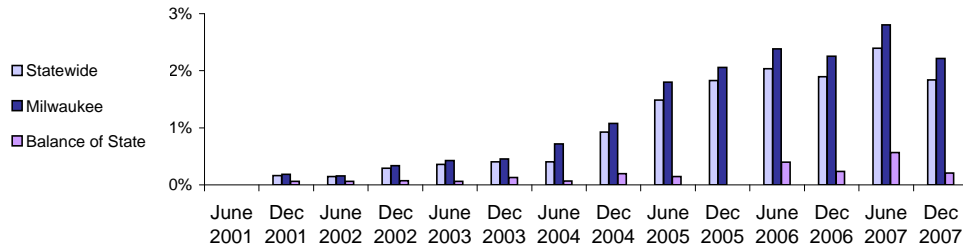
	Sep 2007	Oct 2007	Nov 2007	Dec 2007	Jan 2008	Feb 2008
<b>Milwaukee County</b>	495	527	513	498	475	464
<b>Balance of State</b>	75	66	72	76	82	79
<b>Statewide</b>	570	593	585	574	557	543

Source: CARES, Bureau of Program Services & Statistics, Division of Family Supports, Department of Workforce Development.

\* Extensions can be granted after 24 months of participation in a W-2T or CSJ placement. Extensions are granted when the participant is nearing the 24th month of their placement clock and they qualify for extended eligibility by meeting specific required criteria. Participants may be counted more than once if the participant's extension lasts longer than six months. Ongoing extensions are an end of the month count.

## Extensions Granted for 60- Month Clocks\*

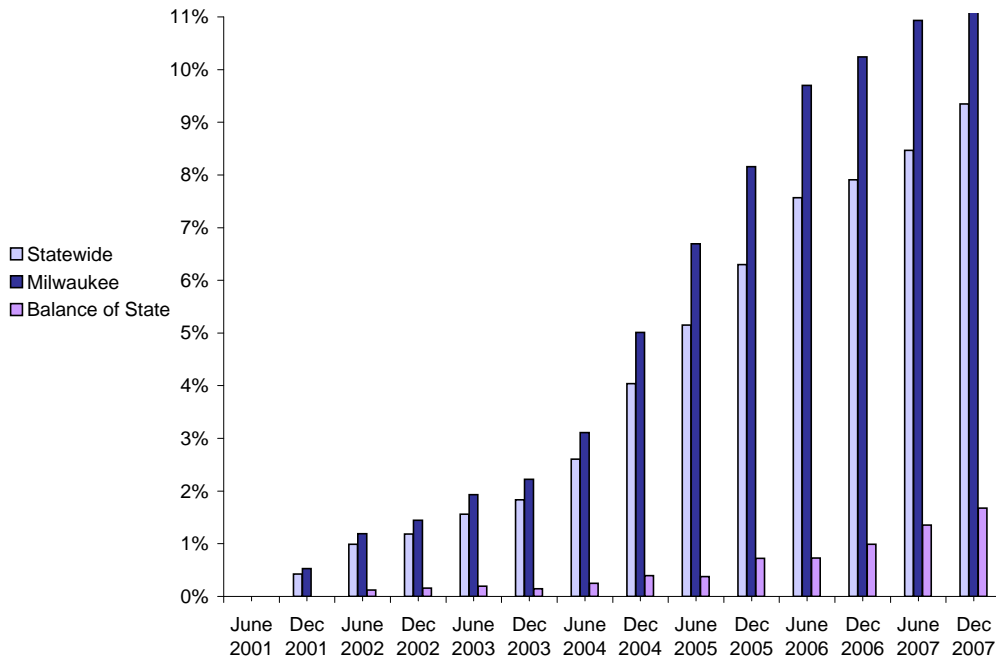
**Percent of Participants with Beginning Extensions  
June 2001 - December 2007**



**Number of Beginning Extensions - Most Recent Six Months**

	Sep 2007	Oct 2007	Nov 2007	Dec 2007	Jan 2008	Feb 2008
<b>Milwaukee County</b>	95	107	114	92	88	99
<b>Balance of State</b>	5	8	4	2	3	6
<b>Statewide</b>	100	115	118	94	91	105

**Percent of Participants with Ongoing Extensions  
June 2001 - December 2007**



**Number of Ongoing Extensions - Most Recent Six Months**

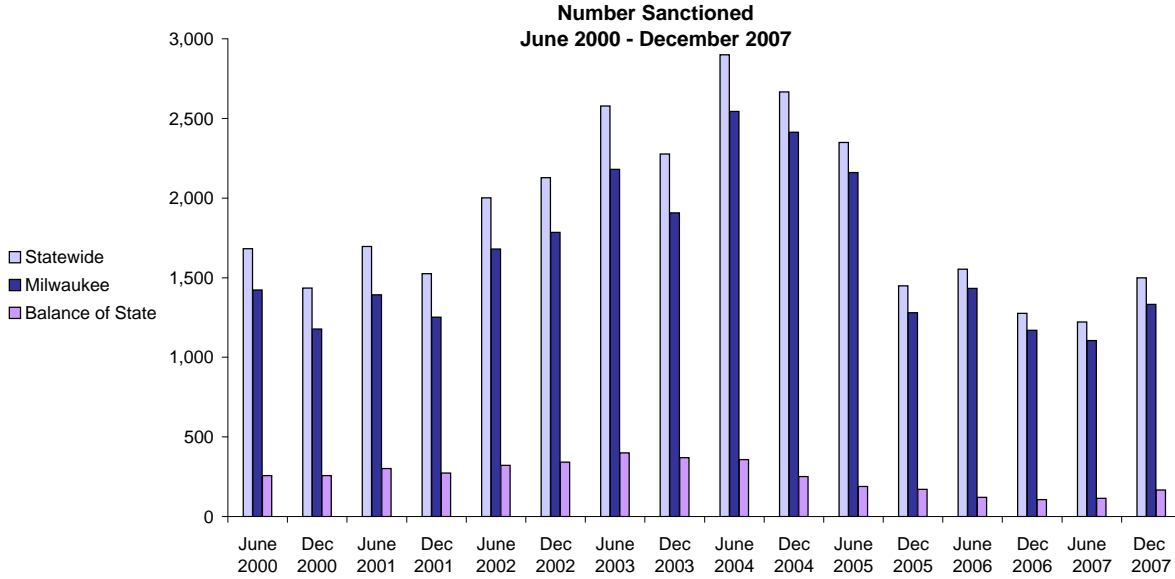
	Sep 2007	Oct 2007	Nov 2007	Dec 2007	Jan 2008	Feb 2008
<b>Milwaukee County</b>	461	503	528	517	499	500
<b>Balance of State</b>	18	22	24	24	21	21
<b>Statewide</b>	479	525	552	541	520	521

Source: CARES, Bureau of Program Services & Statistics, Division of Family Supports, Department of Workforce Development.

Note: Extensions can be granted after 60 months of lifetime participation. Extensions are granted when the participant is nearing the 60th month of their lifetime clock and they qualify for extended eligibility by meeting specific required criteria. The 60- month extensions first became relevant as of September 2001.

\* Participants may be counted more than once if the participant's extension lasts longer than six months. Ongoing Extensions are an end of the month count.

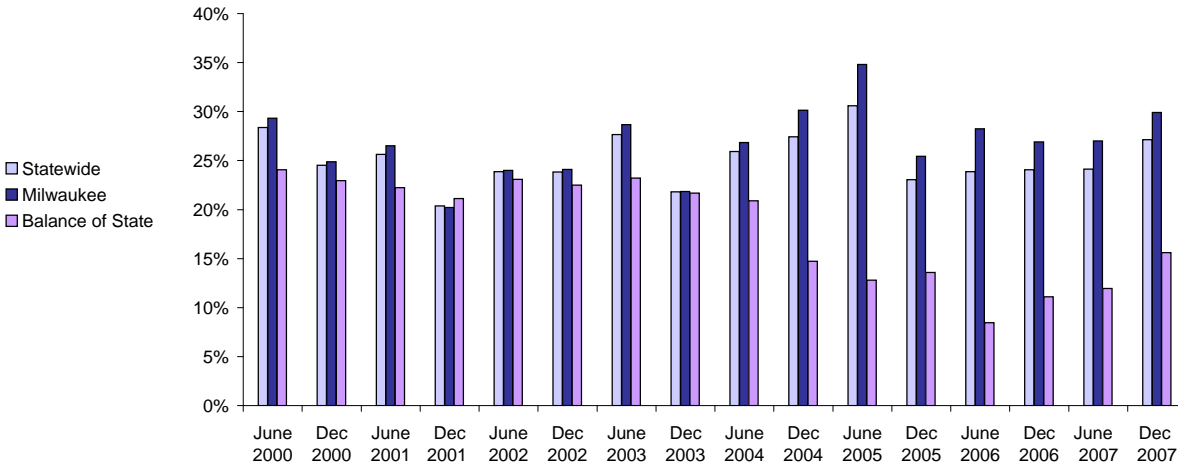
## W-2T and CSJ Participants Who Were Sanctioned



**Number Sanctioned - Most Recent Six Months**

	Sep 2007	Oct 2007	Nov 2007	Dec 2007	Jan 2008	Feb 2008
<b>Milwaukee County</b>	1,233	1,182	1,320	1,333	1,491	1,757
<b>Balance of State</b>	147	185	180	167	175	207
<b>Statewide</b>	1,380	1,367	1,500	1,500	1,666	1,964

**Percent Sanctioned  
June 2000 - December 2007**



**Percent Sanctioned - Most Recent Six Months**

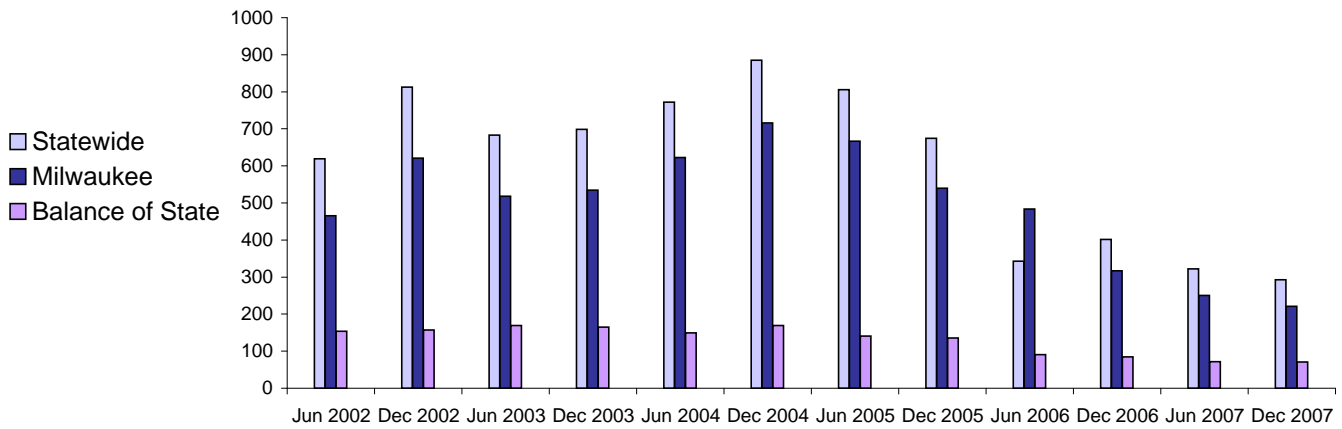
	Sep 2007	Oct 2007	Nov 2007	Dec 2007	Jan 2008	Feb 2008
<b>Milwaukee County</b>	27%	26%	29%	30%	34%	40%
<b>Balance of State</b>	14%	17%	17%	16%	16%	19%
<b>Statewide</b>	25%	24%	27%	27%	30%	36%

Source: CARES, Bureau of Program Services & Statistics, Division of Family Supports, Department of Workforce Development.

Note: Because sanction counts prior to September 1999 were counted differently they are not included in these graphs. The graphs on this page report information on the sanctionable population (W-2T and CSJ placements only). The data represented here are point in time during a month.

# Entered Employments of W-2 Participants

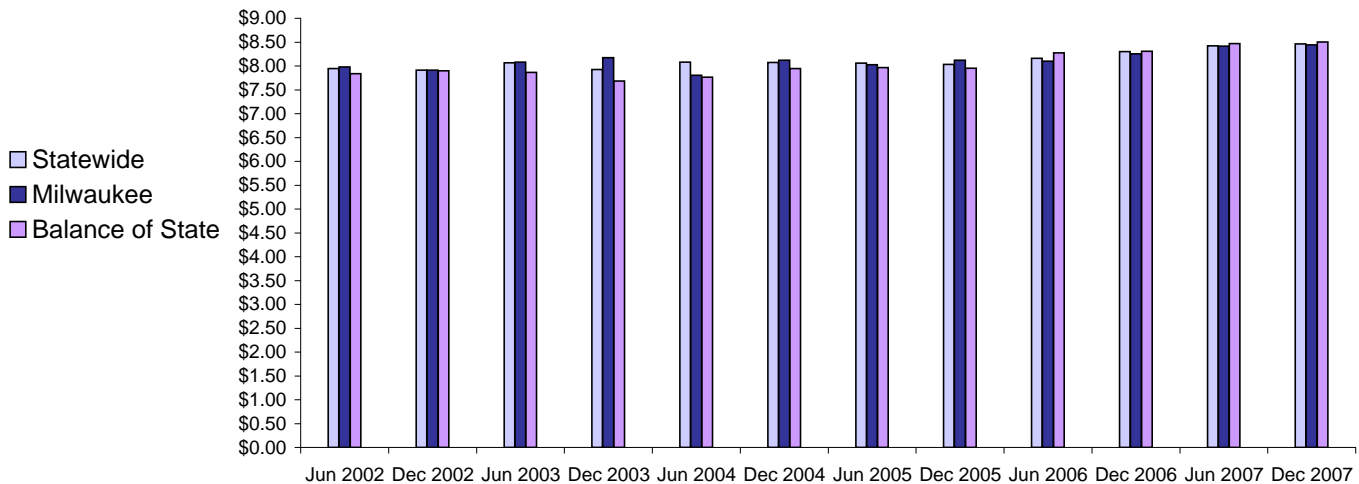
Six Month Average Number Entered Employment\*  
June 2002-December 2007



Total Number Of Entered Employments - Most Recent Six Months

	Sep 2007	Oct 2007	Nov 2007	Dec 2007	Jan 2008	Feb 2008
<b>Milwaukee County</b>	239	298	202	146	240	179
<b>Balance of State</b>	79	105	55	38	56	59
<b>Statewide</b>	318	403	257	184	296	238

Six Month Average Hourly Wage\*  
June 2002 - December 2007



Average Hourly Wage - Most Recent Six Months

	Sep 2007	Oct 2007	Nov 2007	Dec 2007	Jan 2008	Feb 2008
<b>Milwaukee County</b>	\$8.26	\$8.57	\$8.74	\$8.57	\$8.60	\$8.66
<b>Balance of State</b>	\$9.10	\$8.51	\$8.17	\$8.55	\$9.08	\$8.38
<b>Statewide</b>	\$8.47	\$8.55	\$8.62	\$8.56	\$8.69	\$8.60

Source: CARES, Bureau of Program Services & Statistics, Division of Family Supports, Department of Workforce Development.  
 Note: Entered Employment is a W-2 program performance measure counted when a participant obtains or increases wages in a new job. Entered Employment of less than 30 days are excluded. Wage data are reported for jobs with hourly wages  
 \*Average number entered employment per month for the six month period ending in June or December.