

# Wisconsin Works (W-2) Critical Indicators



**January  
2008**

Bureau of Program Services & Statistics  
Division of Family Supports  
Department of Workforce Development



State of Wisconsin

## Wisconsin W-2 Participants in Paid Placements\*

### Number of Participants in Paid Placements

	One Year Ago	Last Month	This Month	Change in Most Recent Two Months	
	Jan 2007	Dec 2007	Jan 2008	Number	Percent
<b>Paid Participants:</b>					
Milwaukee County	4,540	4,791	4,802	11	0.2%
Balance of State	1,792	1,816	1,832	16	0.9%
Statewide Caseload	6,332	6,607	6,634	27	0.4%
<b>Milwaukee County Regions:</b>	<b>Jan 2007</b>	<b>Dec 2007</b>	<b>Jan 2008</b>	<b>Number</b>	<b>Percent</b>
Milwaukee NE YWCA	582	560	553	-7	-1.3%
Milwaukee SE UMOS	704	800	801	1	0.1%
Milwaukee Central UMOS	1,101	1,264	1,278	14	1.1%
Milwaukee NW MAXIMUS	1,086	1,028	1,033	5	0.5%
Milwaukee SW MAXIMUS	715	717	714	-3	-0.4%
Milwaukee SSI-Adv UMOS	352	422	423	1	0.2%
<b>Milwaukee County Total*:</b>	<b>4,540</b>	<b>4,791</b>	<b>4,802</b>	<b>11</b>	<b>0.2%</b>

Source: CARES, Bureau of Program Services & Statistics, Division of Family Supports, Department of Workforce Development.

\*Note: Milwaukee County total includes a small number of cases served by Milwaukee County Department of Social Services.

Note: The paid caseload includes the following categories of placements:

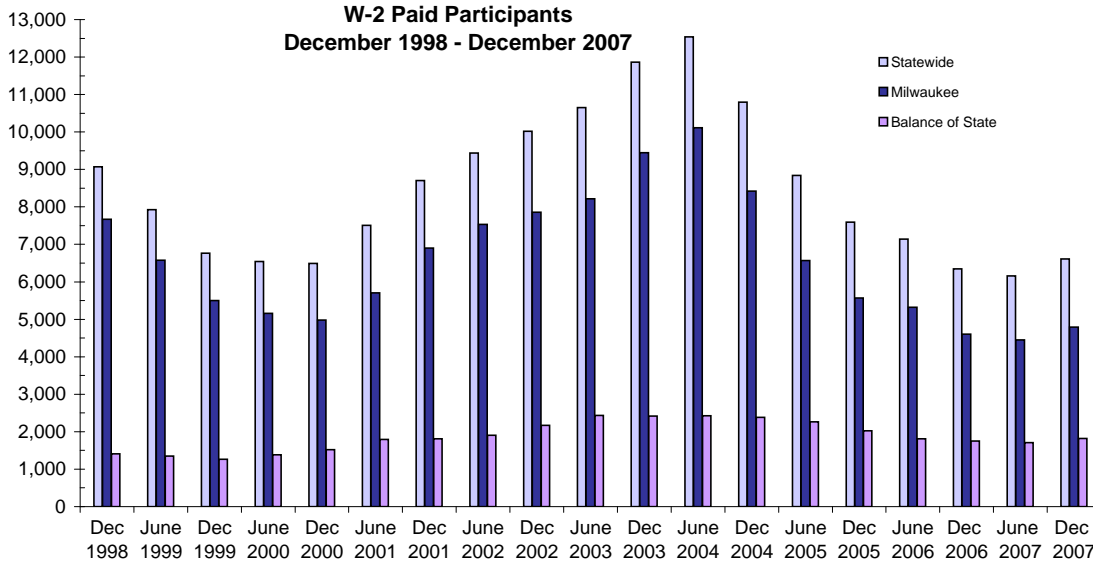
W-2 Transition (W-2T)..... A W-2 work-readiness practice placement for individuals who are unable to perform independent, self-sustaining work, but who are able to participate in work practice or other developmental activities and training up to their abilities.

Community Service Job (CSJ)..... A W-2 work-readiness practice placement designed to improve the employability of participants by providing work experience and training in the public and private sectors.

Trial Job (TJB)..... A W-2 subsidized employment position that provides work experience and training which may become permanent, unsubsidized employment. Paid directly to the employer.

Caretaker of Newborn (CMC)..... A custodial parent of a child who is 12 weeks old or less and who meets the financial and non-financial eligibility requirements for W-2 employment positions.

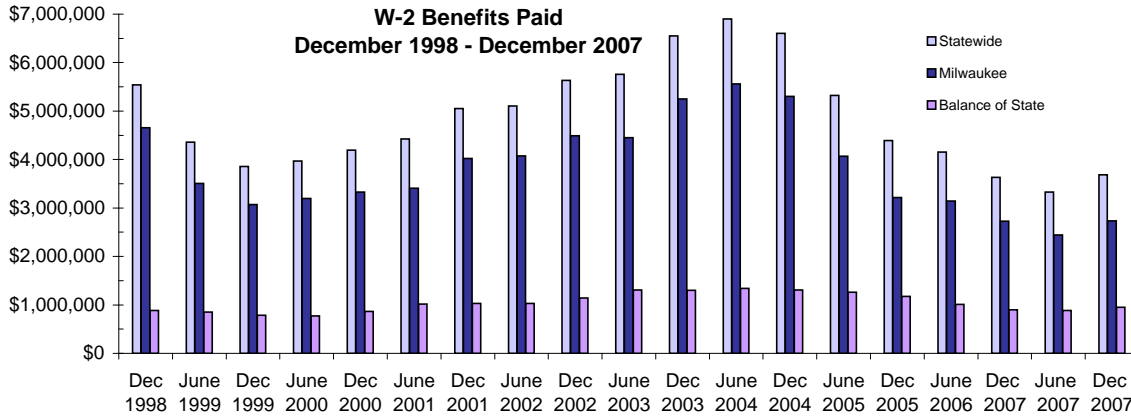
## W-2 Paid Participants and Benefits Paid



### W-2 Paid Participants - Most Recent Six Months

	Aug 2007	Sep 2007	Oct 2007	Nov 2007	Dec 2007	Jan 2008
<b>Milwaukee County</b>	4,720	4,827	4,856	4,853	4,791	4,802
<b>Balance of State</b>	1,858	1,879	1,890	1,859	1,816	1,832
<b>Statewide</b>	6,578	6,706	6,746	6,712	6,607	6,634

Source: CARES, Bureau of Program Services & Statistics, Division of Family Supports, Department of Workforce Development

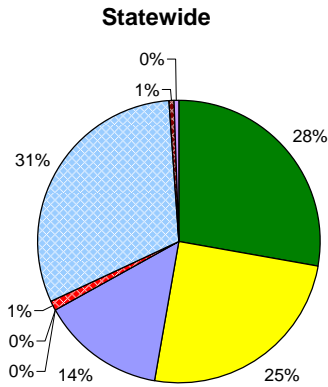
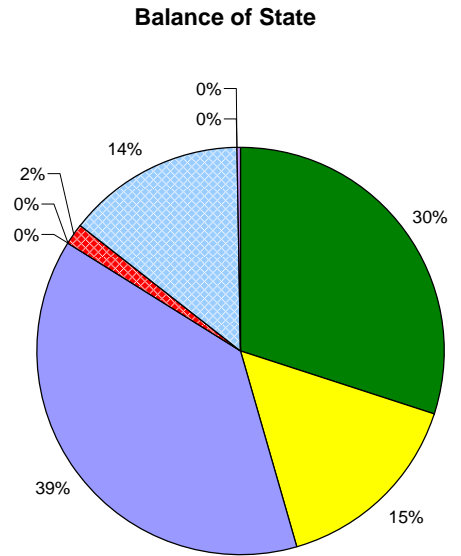
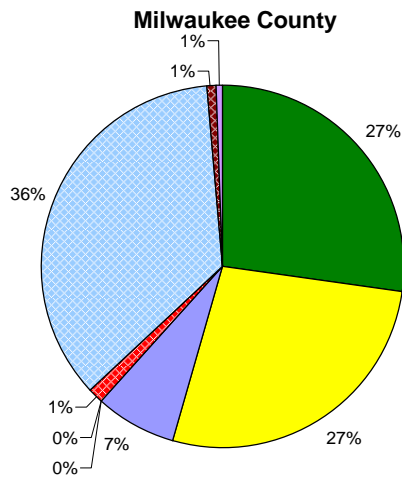


### W-2 Benefits Paid - Most Recent Six Months

	Aug 2007	Sep 2007	Oct 2007	Nov 2007	Dec 2007	Jan 2008
<b>Milwaukee County</b>	\$2,587,590	\$2,518,867	\$2,711,575	\$2,826,387	\$2,735,420	\$2,753,688
<b>Balance of State</b>	\$926,158	\$917,905	\$963,657	\$988,982	\$649,575	\$939,844
<b>Statewide</b>	\$3,513,748	\$3,436,772	\$3,675,232	\$3,815,369	\$3,684,995	\$3,693,532

Note: The benefits paid are the total monthly net benefits after sanctions and recoupments are applied.

## Placement of W-2 Participants, January 2008



**Number and Percent of W-2 Participants in Placements**

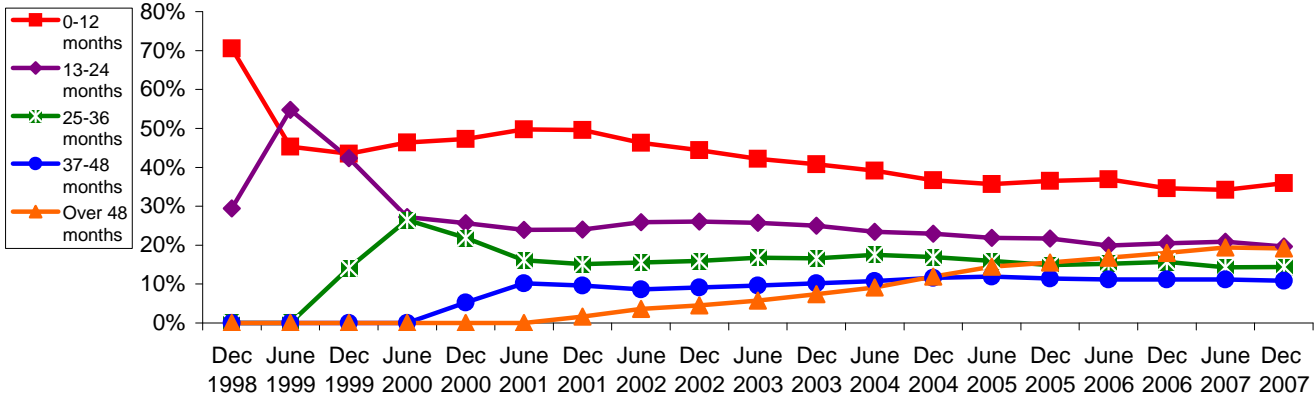
	Milwaukee County		BOS		Statewide	
	#	%	#	%	#	%
W-2T	2,100	44	649	35	2,749	41
CSJ	2,138	45	355	19	2,493	38
CMC	561	12	827	45	1,388	21
TJB	3	0	1	0	4	0
<b>Paid Total</b>	<b>4,802</b>	<b>100%</b>	<b>1,832</b>	<b>100%</b>	<b>6,634</b>	<b>100%</b>
CMU	88	3	34	10	122	4
CMF	2,736	93	306	88	3,042	93
CMD	72	2	0	0	72	2
Other Non-Paid	40	1	7	2	47	1
<b>Non-Paid Total</b>	<b>2,936</b>	<b>100%</b>	<b>347</b>	<b>100%</b>	<b>3,283</b>	<b>100%</b>
<b>Grand Total</b>	<b>7,738</b>		<b>2,179</b>		<b>9,917</b>	

Source: CARES, Bureau of Program Services & Statistics, Division of Family Supports, Department of Workforce Development.

- Note: W-2 Transition (W-2T)..... A W-2 work-readiness practice placement for individuals who are unable to perform independent, self-sustaining work, but who are able to participate in work practice or other developmental activities and training up to their abilities.
- Community Service Job (CSJ)..... A W-2 work-readiness practice placement designed to improve the employability of participants by providing work experience and training in the public and private sectors.
- Trial Job (TJB)..... A W-2 subsidized employment position that provides work experience and training which may become permanent, unsubsidized employment. Subsidy is paid directly to the employer.
- Case Mgmt - Caretaker of a Newborn (CMC)..... A custodial parent of a child who is 12 weeks old or less and who meets the financial and non-financial eligibility requirements for W-2 employment positions.
- Case Mgmt - Pregnancy (CMP)..... A participant with a medically verified pregnancy.
- Case Mgmt - Follow - Up ( CMF )..... Used for Placement for Individuals who move from a W-2 benefit Placement to unsubsidized employment.
- Case Mgmt- Denied Extension CMD)..... Participants who exhausted time-limited benefits but are receiving services.
- Case Mgmt - Service for Working (CMU)..... Used for individuals working in unsubsidized employment who are without barriers to full-time employment.
- Case Mgmt - Non-Custodial Parent (CMN)..... Used for case management services for non-custodial parents.
- Case Mgmt - Minor Parent (CMM)..... Used for case management services for a custodial minor parent.

## Number of Months Served in W-2 \*

### Percentage Distribution- Statewide December 1998- December 2007

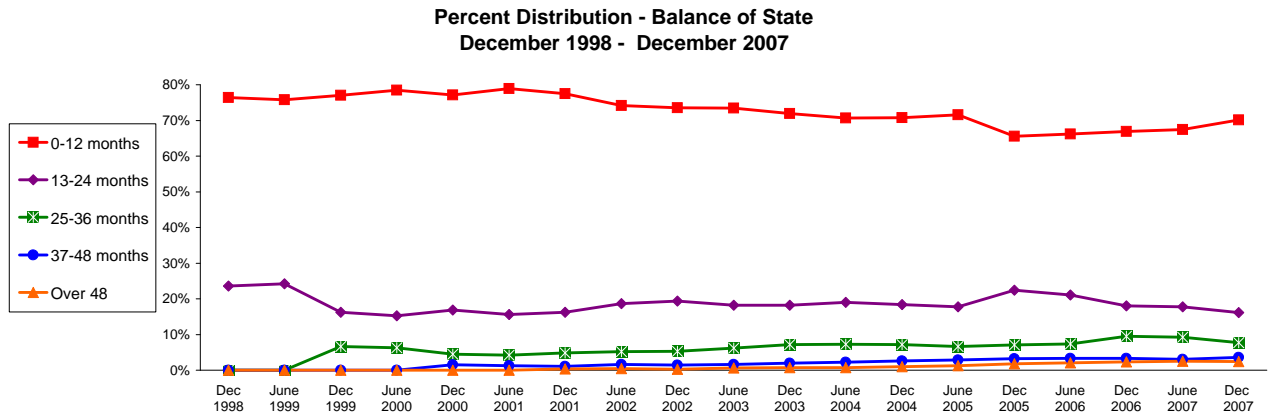
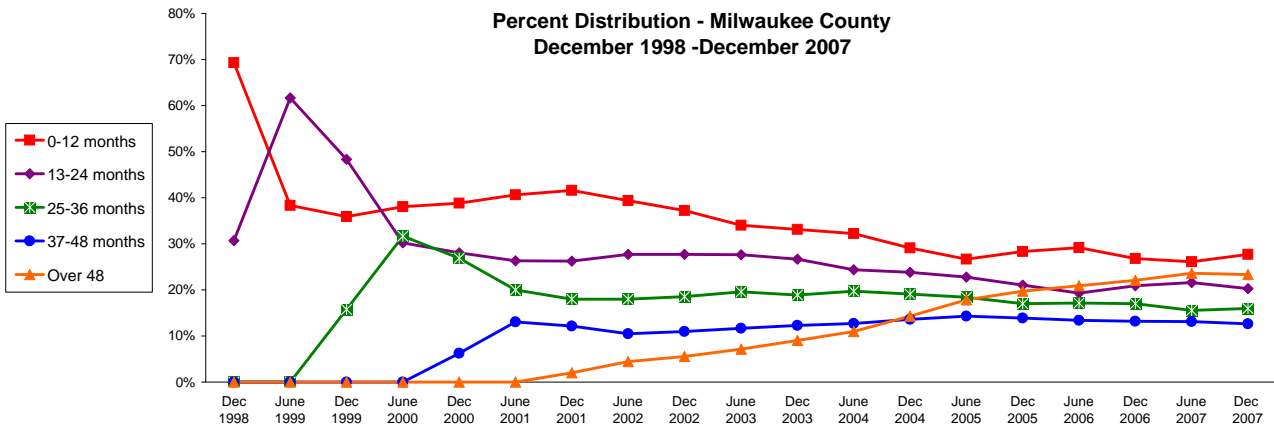


Source: CARES, Bureau of Program Services & Statistics, Division of Family Supports, Department of Workforce Development.  
 \* Note: Length of stay is determined for the W-2 participants in the report month by the number of total months a participant has been in W-2 since the beginning of the program.

### Number of Months Served in W-2 - Most Recent Six Months

	Months	Aug 2007	Sep 2007	Oct 2007	Nov 2007	Dec 2007	Jan 2008
<b>Milwaukee County</b>	0-12	2,175	2,218	2,264	2,221	2,183	2,236
	13-24	1,689	1,726	1,675	1,661	1,600	1,603
	25-36	1,252	1,269	1,301	1,273	1,261	1,199
	37-48	1,047	1,059	1,046	1,013	997	954
	Over 48	1,874	1,908	1,865	1,851	1,839	1,842
<b>Balance of State</b>	0-12	1,760	1,740	1,774	1,730	1,656	1,639
	13-24	399	381	402	390	382	385
	25-36	197	197	196	189	183	181
	37-48	66	77	77	78	84	76
	Over 48	63	59	56	55	57	57
<b>Statewide</b>	0-12	3,693	3,708	3,789	3,701	3,591	3,624
	13-24	2,058	2,079	2,058	2,037	1,962	1,966
	25-36	1,448	1,461	1,484	1,446	1,439	1,375
	37-48	1,122	1,148	1,132	1,100	1,086	1,039
	Over 48	1,951	1,980	1,937	1,922	1,911	1,913

## Number of Months Served in W-2\* , Continued

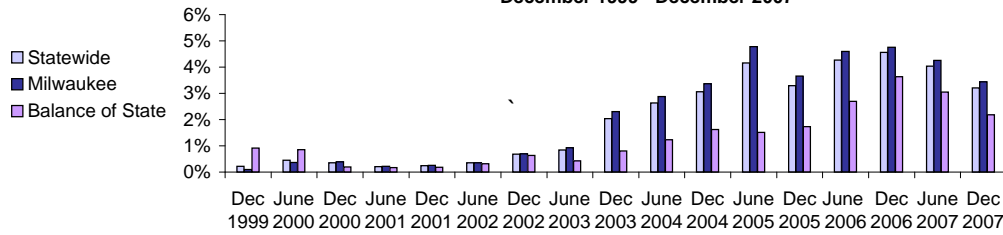


Source: CARES, Bureau of Program Services & Statistics, Division of Family Services, Department of Workforce Development.

\* Length of stay is determined for the W-2 participants in the report month by the number of total months a participant has been in W-2 since the beginning of the program. Participants may be counted more than once if their geographic location changes from Milwaukee to Balance of State or vice versa.

## Extensions Granted for 24 - Month Clocks\*

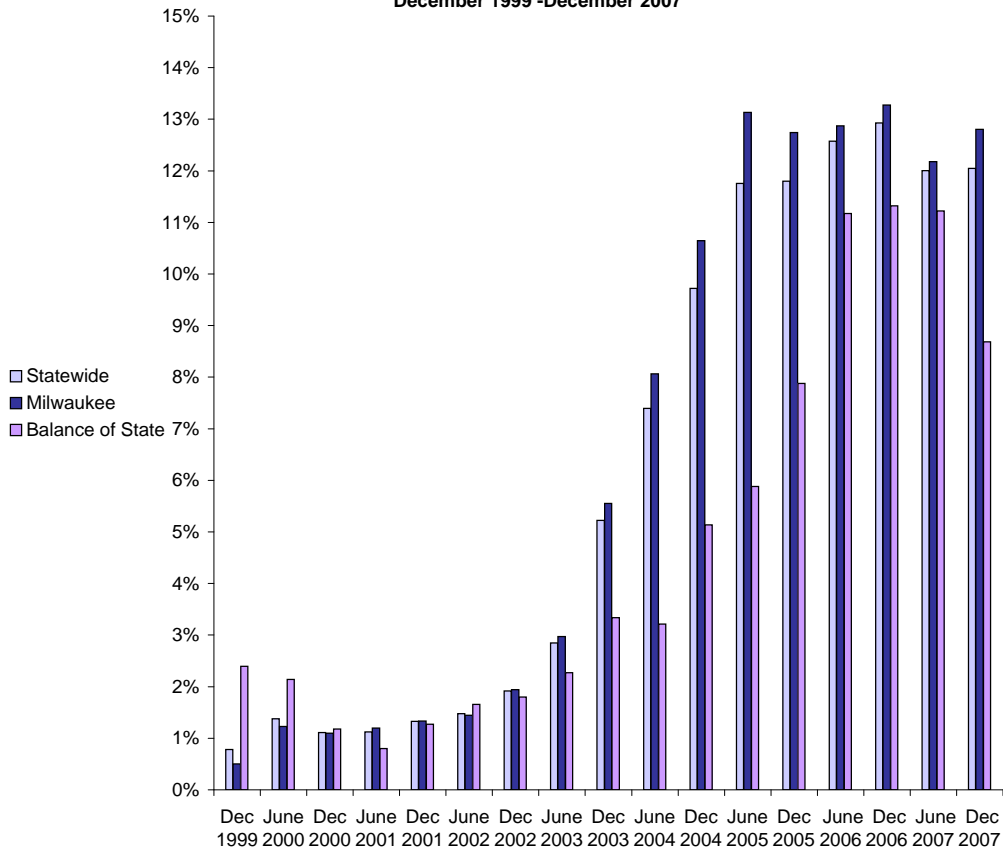
**Percent of W-2T & CSJ Participants with Beginning Extensions  
December 1999 - December 2007**



**Number of Beginning Extensions - Most Recent Six Months**

	Aug 2007	Sep 2007	Oct 2007	Nov 2007	Dec 2007	Jan 2008
<b>Milwaukee County</b>	173	166	184	182	143	157
<b>Balance of State</b>	21	25	13	25	21	22
<b>Statewide</b>	194	191	197	207	164	179

**Percent of W-2T & CSJ Participants with Ongoing Extensions  
December 1999 - December 2007**



**Number of Ongoing Extensions - Most Recent Six Months**

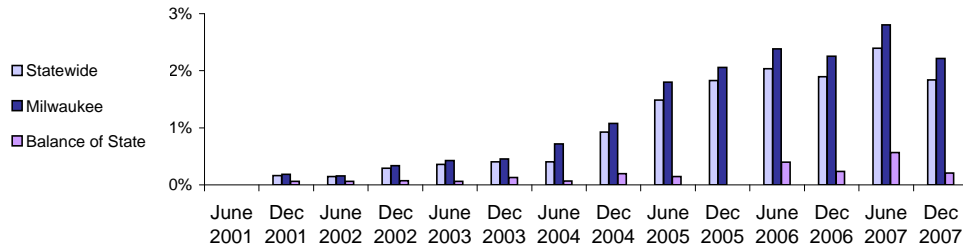
	Aug 2007	Sep 2007	Oct 2007	Nov 2007	Dec 2007	Jan 2008
<b>Milwaukee County</b>	471	495	527	513	498	475
<b>Balance of State</b>	78	75	66	72	76	82
<b>Statewide</b>	549	570	593	585	574	557

Source: CARES, Bureau of Program Services & Statistics, Division of Family Supports, Department of Workforce Development.

\* Extensions can be granted after 24 months of participation in a W-2T or CSJ placement. Extensions are granted when the participant is nearing the 24th month of their placement clock and they qualify for extended eligibility by meeting specific required criteria. Participants may be counted more than once if the participant's extension lasts longer than six months. Ongoing extensions are an end of the month count.

## Extensions Granted for 60- Month Clocks\*

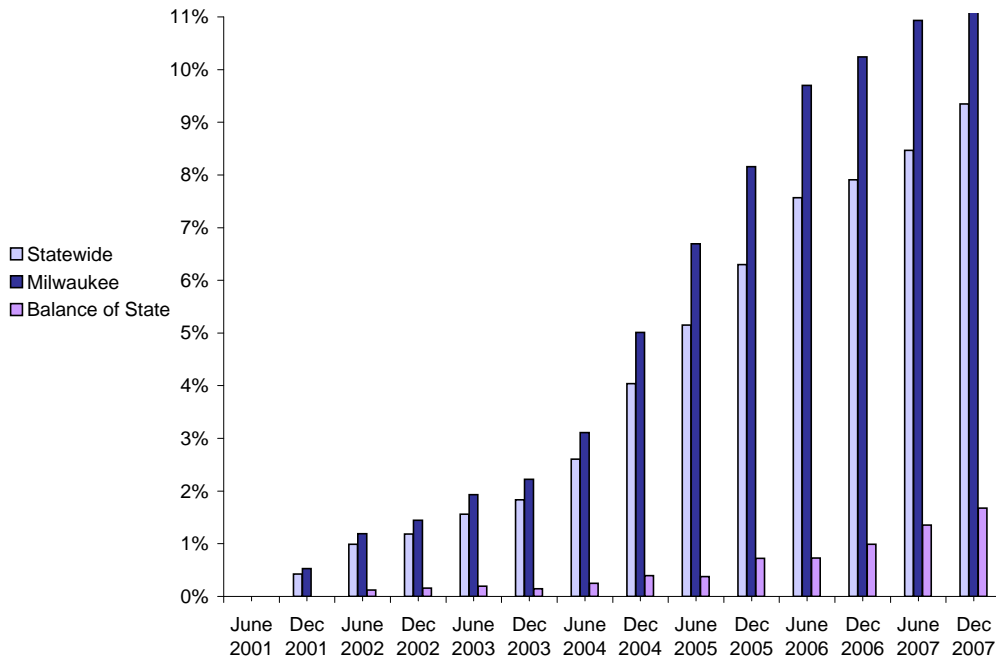
**Percent of Participants with Beginning Extensions  
June 2001 - December 2007**



**Number of Beginning Extensions - Most Recent Six Months**

	Aug 2007	Sep 2007	Oct 2007	Nov 2007	Dec 2007	Jan 2008
<b>Milwaukee County</b>	119	95	107	114	92	88
<b>Balance of State</b>	6	5	8	4	2	3
<b>Statewide</b>	125	100	115	118	94	91

**Percent of Participants with Ongoing Extensions  
June 2001 - December 2007**



**Number of Ongoing Extensions - Most Recent Six Months**

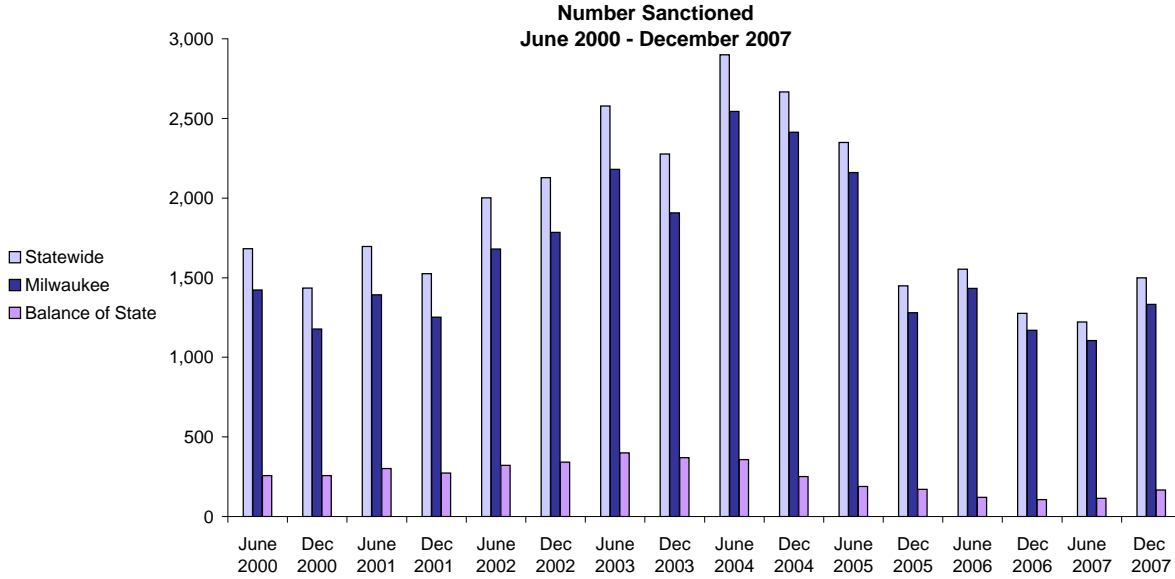
	Aug 2007	Sep 2007	Oct 2007	Nov 2007	Dec 2007	Jan 2008
<b>Milwaukee County</b>	464	461	503	528	517	499
<b>Balance of State</b>	18	18	22	24	24	21
<b>Statewide</b>	482	479	525	552	541	520

Source: CARES, Bureau of Program Services & Statistics, Division of Family Supports, Department of Workforce Development.

Note: Extensions can be granted after 60 months of lifetime participation. Extensions are granted when the participant is nearing the 60th month of their lifetime clock and they qualify for extended eligibility by meeting specific required criteria. The 60- month extensions first became relevant as of September 2001.

\* Participants may be counted more than once if the participant's extension lasts longer than six months. Ongoing Extensions are an end of the month count.

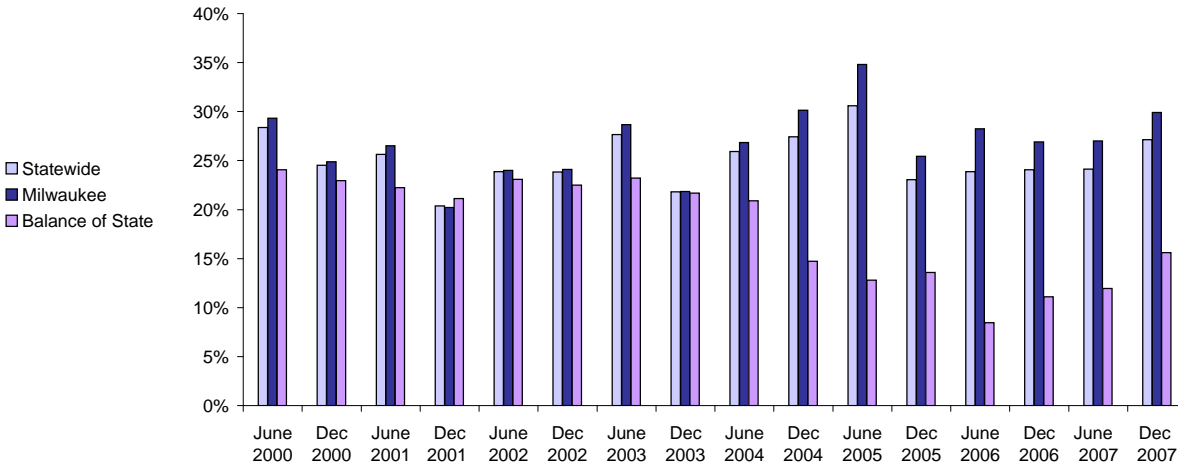
## W-2T and CSJ Participants Who Were Sanctioned



**Number Sanctioned - Most Recent Six Months**

	Aug 2007	Sep 2007	Oct 2007	Nov 2007	Dec 2007	Jan 2008
<b>Milwaukee County</b>	1,200	1,233	1,182	1,320	1,333	1,491
<b>Balance of State</b>	108	147	185	180	167	175
<b>Statewide</b>	1,308	1,380	1,367	1,500	1,500	1,666

**Percent Sanctioned  
June 2000 - December 2007**



**Percent Sanctioned - Most Recent Six Months**

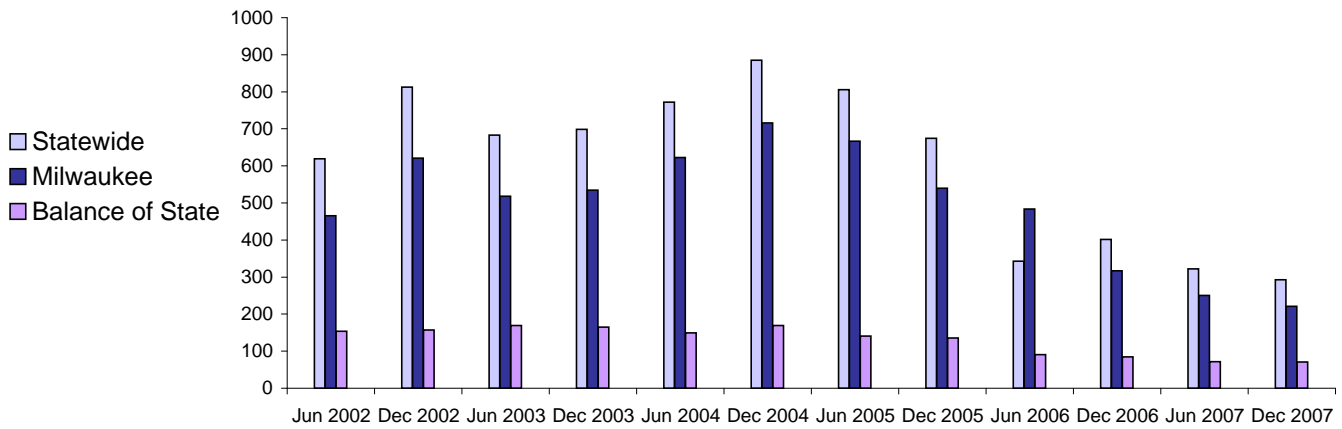
	Aug 2007	Sep 2007	Oct 2007	Nov 2007	Dec 2007	Jan 2008
<b>Milwaukee County</b>	28%	27%	26%	29%	30%	34%
<b>Balance of State</b>	11%	14%	17%	17%	16%	16%
<b>Statewide</b>	24%	25%	24%	27%	27%	30%

Source: CARES, Bureau of Program Services & Statistics, Division of Family Supports, Department of Workforce Development.

Note: Because sanction counts prior to September 1999 were counted differently they are not included in these graphs. The graphs on this page report information on the sanctionable population (W-2T and CSJ placements only). The data represented here are point in time during a month.

# Entered Employments of W-2 Participants

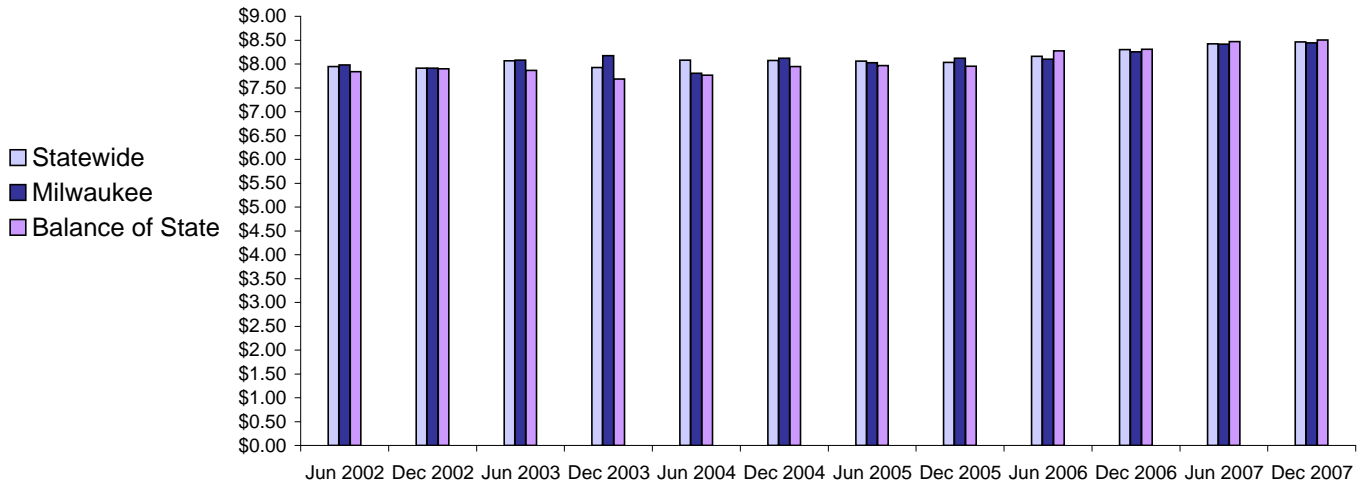
Six Month Average Number Entered Employment\*  
June 2002-December 2007



Total Number Of Entered Employments - Most Recent Six Months

	Aug 2007	Sep 2007	Oct 2007	Nov 2007	Dec 2007	Jan 2008
<b>Milwaukee County</b>	241	239	298	202	146	240
<b>Balance of State</b>	73	79	105	55	38	56
<b>Statewide</b>	314	318	403	257	184	296

Six Month Average Hourly Wage\*  
June 2002 - December 2007



Average Hourly Wage - Most Recent Six Months

	Aug 2007	Sep 2007	Oct 2007	Nov 2007	Dec 2007	Jan 2008
<b>Milwaukee County</b>	\$8.19	\$8.26	\$8.57	\$8.74	\$8.57	\$8.60
<b>Balance of State</b>	\$8.12	\$9.10	\$8.51	\$8.17	\$8.55	\$9.08
<b>Statewide</b>	\$8.17	\$8.47	\$8.55	\$8.62	\$8.56	\$8.69

Source: CARES, Bureau of Program Services & Statistics, Division of Family Supports, Department of Workforce Development.

Note: Entered Employment is a W-2 program performance measure counted when a participant obtains or increases wages in a new job.

Entered Employment of less than 30 days are excluded. Wage data are reported for jobs with hourly wages

\*Average number entered employment per month for the six month period ending in June or December.