

Wisconsin Works (W-2) Critical Indicators



**November
2007**

Bureau of Workforce Information
Division of Workforce Solutions
Department of Workforce Development



State of Wisconsin

Wisconsin W-2 Participants in Paid Placements*

Number of Participants in Paid Placements

	One Year Ago	Last Month	This Month	Change in Most Recent Two Months	
	Nov 2006	Oct 2007	Nov 2007	Number	Percent
Paid Participants:					
Milwaukee County	4,743	4,856	4,853	-3	-0.1%
Balance of State	1,757	1,890	1,859	-31	-1.6%
Statewide Caseload	6,500	6,746	6,712	-34	-0.5%
Milwaukee County Regions:	Nov 2006	Oct 2007	Nov 2007	Number	Percent
Milwaukee NE YWCA	566	578	562	-16	-2.8%
Milwaukee SE UMOS	711	765	797	32	4.2%
Milwaukee Central UMOS	1,267	1,244	1,289	45	3.6%
Milwaukee NW MAXIMUS	1,096	1,084	1,027	-57	-5.3%
Milwaukee SW MAXIMUS	772	760	733	-27	-3.6%
Milwaukee SSI-Adv UMOS	330	420	444	24	5.7%
Milwaukee County Total*:	4,743	4,856	4,853	-3	-0.1%

Source: CARES, Bureau of Program Services & Statistics, Division of Family Supports, Department of Workforce Development.

*Note: Milwaukee County total includes a small number of cases served by Milwaukee County Department of Social Services.

Note: The paid caseload includes the following categories of placements:

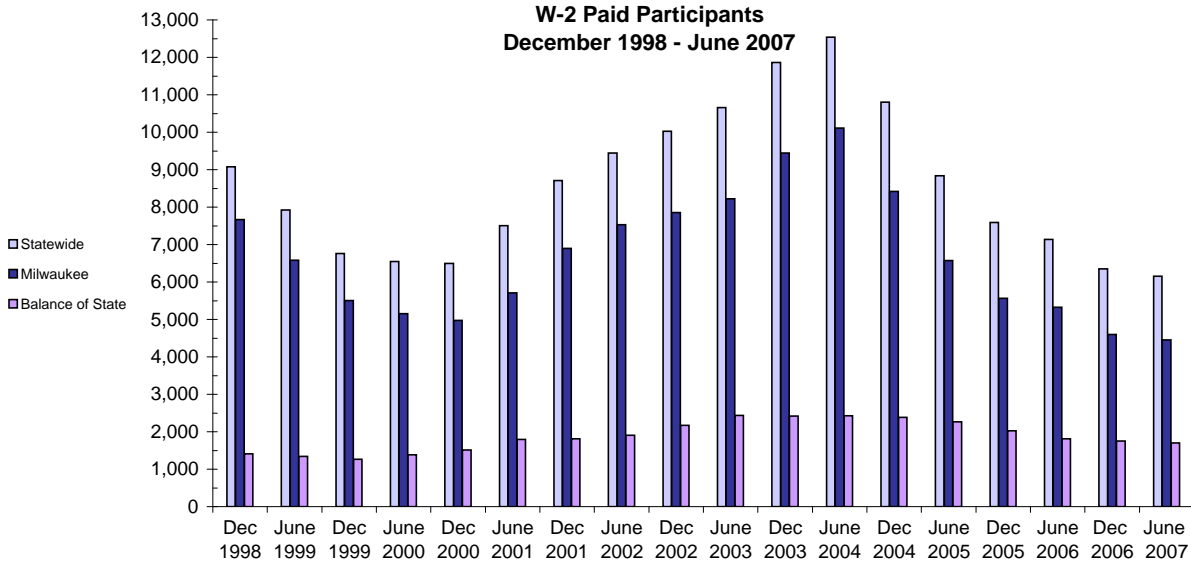
W-2 Transition (W-2T)..... A W-2 work-readiness practice placement for individuals who are unable to perform independent, self-sustaining work, but who are able to participate in work practice or other developmental activities and training up to their abilities.

Community Service Job (CSJ)..... A W-2 work-readiness practice placement designed to improve the employability of participants by providing work experience and training in the public and private sectors.

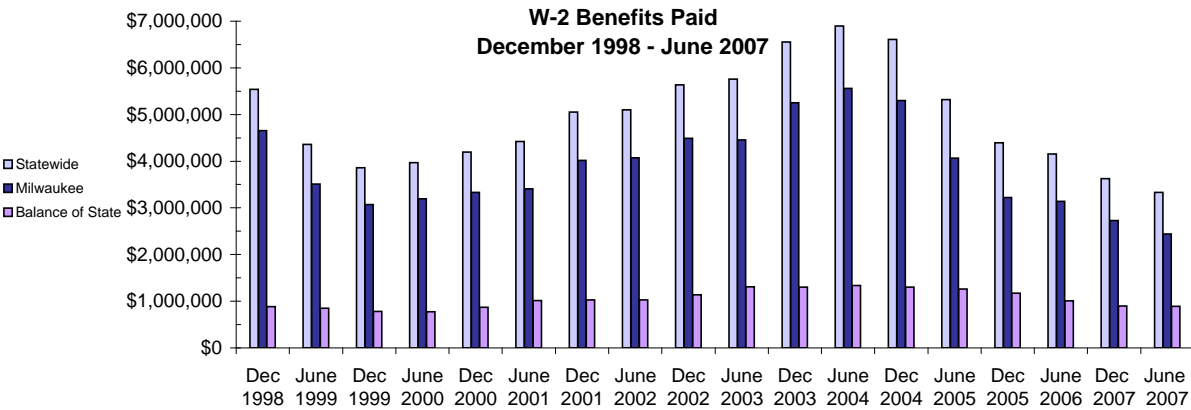
Trial Job (TJB)..... A W-2 subsidized employment position that provides work experience and training which may become permanent, unsubsidized employment. Paid directly to the employer.

Caretaker of Newborn (CMC)..... A custodial parent of a child who is 12 weeks old or less and who meets the financial and non-financial eligibility requirements for W-2 employment positions.

W-2 Paid Participants and Benefits Paid

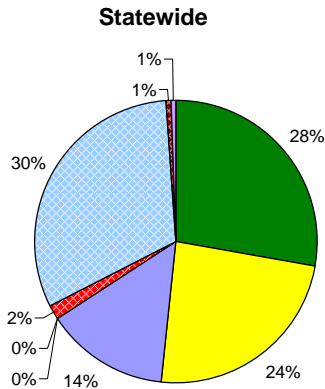
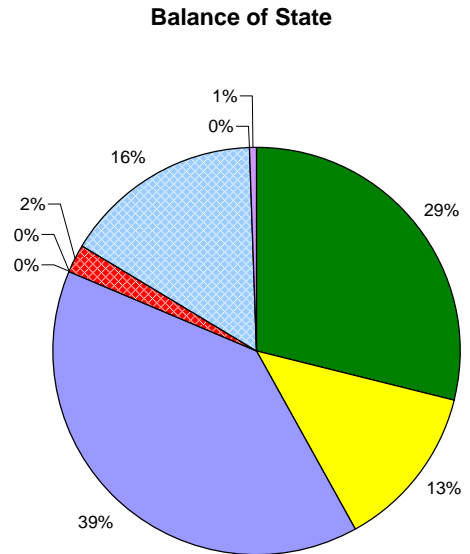
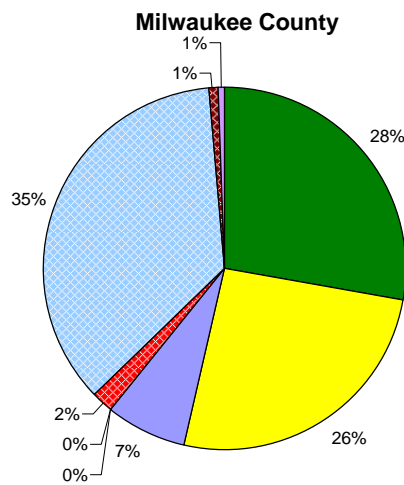


Source: CARES, Bureau of Program Services & Statistics, Division of Family Supports, Department of Workforce Development
 Note: The paid participants included in this count are participants who were in a paid placement during the report month.



Source: CARES, Bureau of Program Services & Statistics, Division of Family Supports, Department of Workforce Development
 Note: The benefits paid are the total monthly net benefits after sanctions and recoupments are applied.

Placement of W-2 Participants, October 2007



Number and Percent of W-2 Participants in Placements

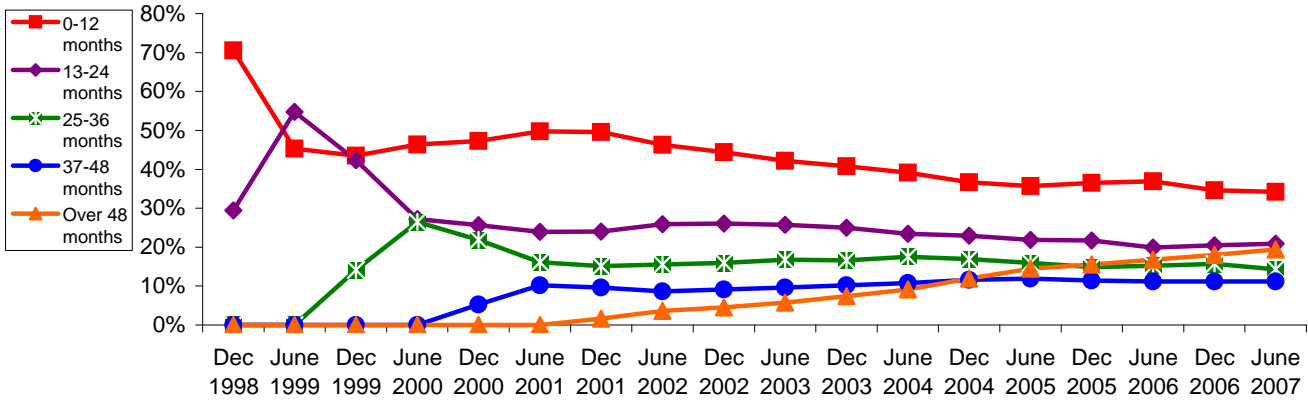
	Milwaukee County		BOS		Statewide	
	#	%	#	%	#	%
W-2T	2,194	45	649	35	2,843	42
CSJ	2,096	43	323	17	2,419	36
CMC	559	12	887	48	1,446	22
TJB	4	0	0	0	4	0
Paid Total	4,853	100%	1,859	100%	6,712	100%
CMU	140	5	50	12	190	5
CMF	2,823	92	357	85	3,180	91
CMD	69	2	0	0	69	2
Other Non-Paid	43	1	12	3	55	2
Non-Paid Total	3,075	100%	419	100%	3,494	100%
Grand Total	7,928		2,278		10,206	

Source: CARES, Bureau of Program Services & Statistics, Division of Family Supports, Department of Workforce Development.

- Note: W-2 Transition (W-2T)..... A W-2 work-readiness practice placement for individuals who are unable to perform independent, self-sustaining work, but who are able to participate in work practice or other developmental activities and training up to their abilities.
- Community Service Job (CSJ)..... A W-2 work-readiness practice placement designed to improve the employability of participants by providing work experience and training in the public and private sectors.
- Trial Job (TJB)..... A W-2 subsidized employment position that provides work experience and training which may become permanent, unsubsidized employment. Subsidy is paid directly to the employer.
- Case Mgmt - Caretaker of a Newborn (CMC)..... A custodial parent of a child who is 12 weeks old or less and who meets the financial and non-financial eligibility requirements for W-2 employment positions.
- Case Mgmt - Pregnancy (CMP)..... A participant with a medically verified pregnancy.
- Case Mgmt - Follow - Up (CMF)..... Used for Placement for Individuals who move from a W-2 benefit Placement to unsubsidized employment.
- Case Mgmt- Denied Extension (CMD)..... Participants who exhausted time-limited benefits but are receiving services.
- Case Mgmt - Service for Working (CMU)..... Used for individuals working in unsubsidized employment who are without barriers to full-time employment.
- Case Mgmt - Non-Custodial Parent (CMN)..... Used for case management services for non-custodial parents.
- Case Mgmt - Minor Parent (CMM)..... Used for case management services for a custodial minor parent.

Number of Months Served in W-2 *

Percentage Distribution- Statewide December 1998- June 2007

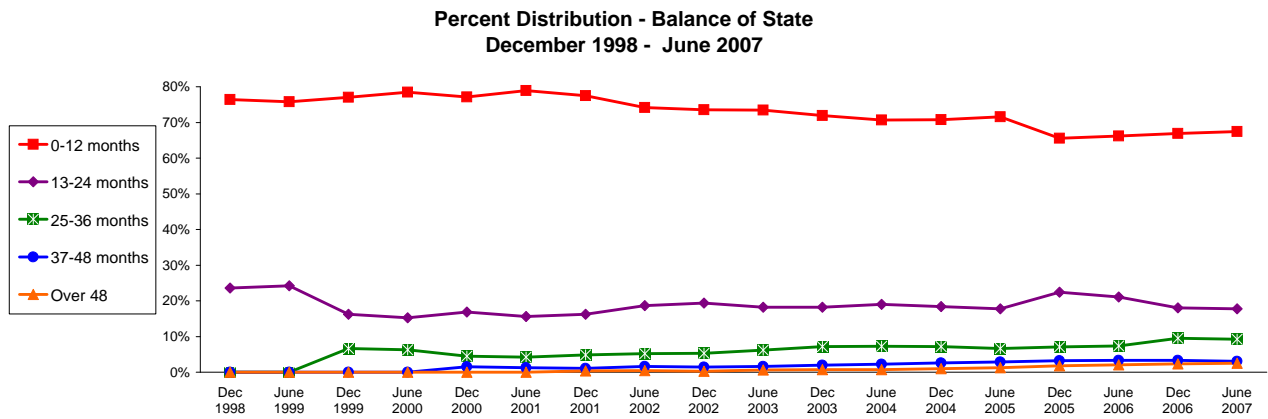
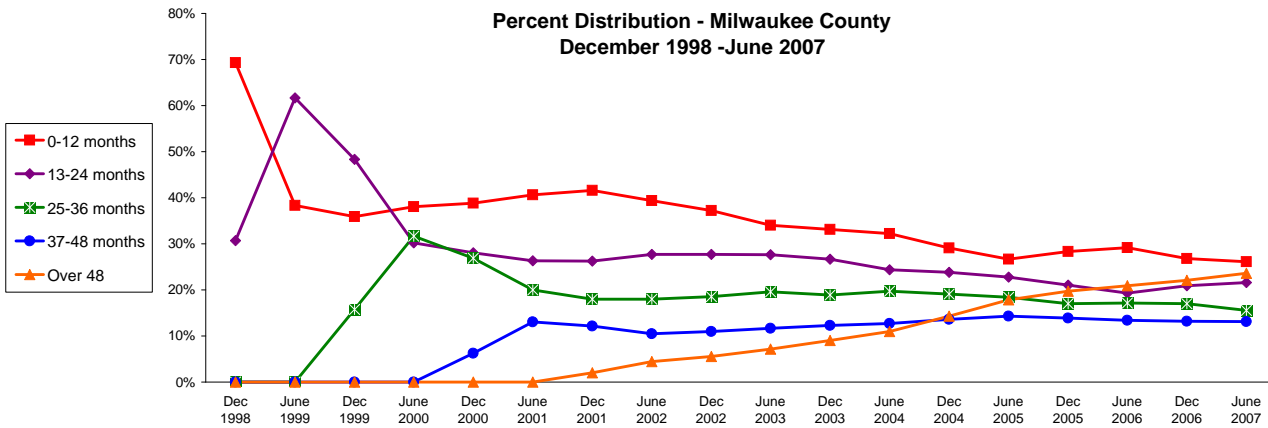


Source: CARES, Bureau of Program Services & Statistics, Division of Family Supports, Department of Workforce Development.
 * Note: Length of stay is determined for the W-2 participants in the report month by the number of total months a participant has been in W-2 since the beginning of the program.

Number of Months Served in W-2 - Most Recent Six Months

	Months	Jun 2007	Jul 2007	Aug 2007	Sep 2007	Oct 2007	Nov 2007
Milwaukee County	0-12	2,053	2,079	2,175	2,218	2,264	2,221
	13-24	1,694	1,691	1,689	1,726	1,675	1,661
	25-36	1,220	1,242	1,252	1,269	1,301	1,273
	37-48	1,033	1,056	1,047	1,059	1,046	1,013
	Over 48	1,855	1,869	1,874	1,908	1,865	1,851
Balance of State	0-12	1,586	1,644	1,760	1,740	1,774	1,730
	13-24	417	403	399	381	402	390
	25-36	218	209	197	197	196	189
	37-48	71	77	66	77	77	78
	Over 48	60	60	63	59	56	55
Statewide	0-12	3,410	3,491	3,693	3,708	3,789	3,701
	13-24	2,083	2,066	2,058	2,079	2,058	2,037
	25-36	1,429	1,442	1,448	1,461	1,484	1,446
	37-48	1,112	1,146	1,122	1,148	1,132	1,100
	Over 48	1,933	1,944	1,951	1,980	1,937	1,922

Number of Months Served in W-2* , Continued

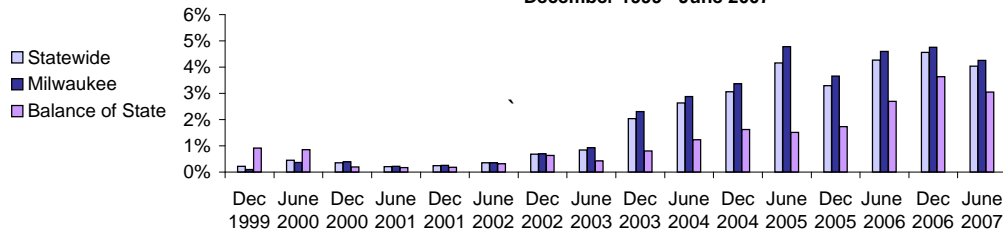


Source: CARES, Bureau of Program Services & Statistics, Division of Family Services, Department of Workforce Development.

* Length of stay is determined for the W-2 participants in the report month by the number of total months a participant has been in W-2 since the beginning of the program. Participants may be counted more than once if their geographic location changes from Milwaukee to Balance of State or vice versa.

Extensions Granted for 24 - Month Clocks*

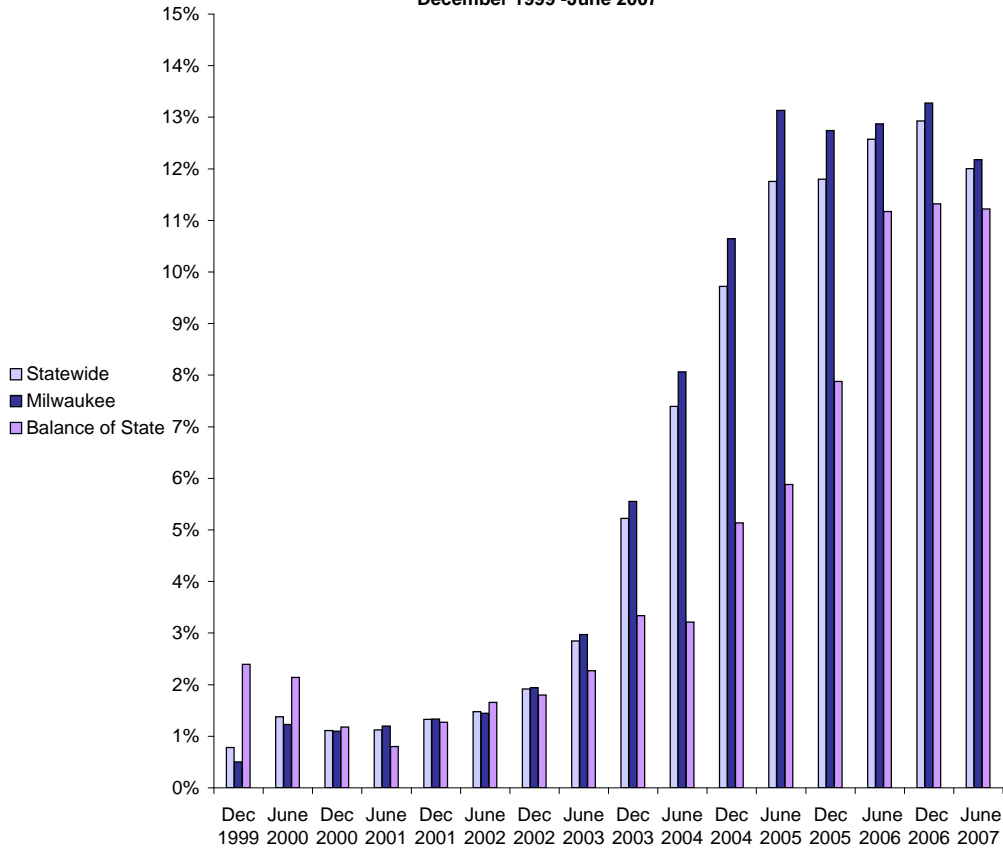
**Percent of W-2T & CSJ Participants with Beginning Extensions
December 1999 - June 2007**



Number of Beginning Extensions - Most Recent Six Months

	Jun 2007	Jul 2007	Aug 2007	Sep 2007	Oct 2007	Nov 2007
Milwaukee County	167	139	173	166	184	182
Balance of State	27	21	21	25	13	25
Statewide	194	160	194	191	197	207

**Percent of W-2T & CSJ Participants with Ongoing Extensions
December 1999 - June 2007**



Number of Ongoing Extensions - Most Recent Six Months

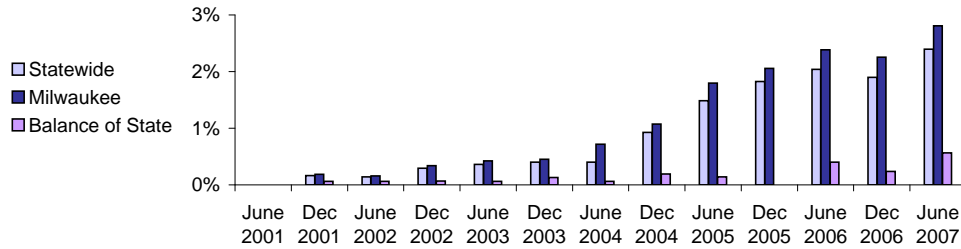
	Jun 2007	Jul 2007	Aug 2007	Sep 2007	Oct 2007	Nov 2007
Milwaukee County	438	454	471	495	527	513
Balance of State	90	83	78	75	66	72
Statewide	528	537	549	570	593	585

Source: CARES, Bureau of Program Services & Statistics, Division of Family Supports, Department of Workforce Development.

* Extensions can be granted after 24 months of participation in a W-2T or CSJ placement. Extensions are granted when the participant is nearing the 24th month of their placement clock and they qualify for extended eligibility by meeting specific required criteria. Participants may be counted more than once if the participant's extension lasts longer than six months. Ongoing extensions are an end of the month count.

Extensions Granted for 60- Month Clocks*

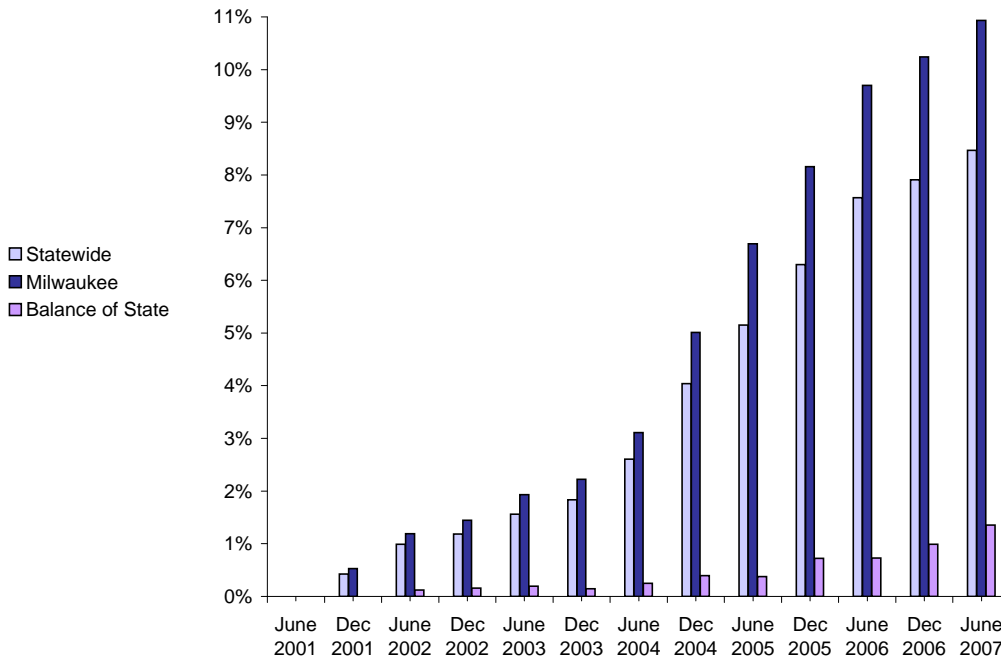
**Percent of Participants with Beginning Extensions
June 2001 - June 2007**



Number of Beginning Extensions - Most Recent Six Months

	Jun 2007	Jul 2007	Aug 2007	Sep 2007	Oct 2007	Nov 2007
Milwaukee County	110	82	119	95	107	114
Balance of State	5	5	6	5	8	4
Statewide	115	87	125	100	115	118

**Percent of Participants with Ongoing Extensions
June 2001 - June 2007**



Number of Ongoing Extensions - Most Recent Six Months

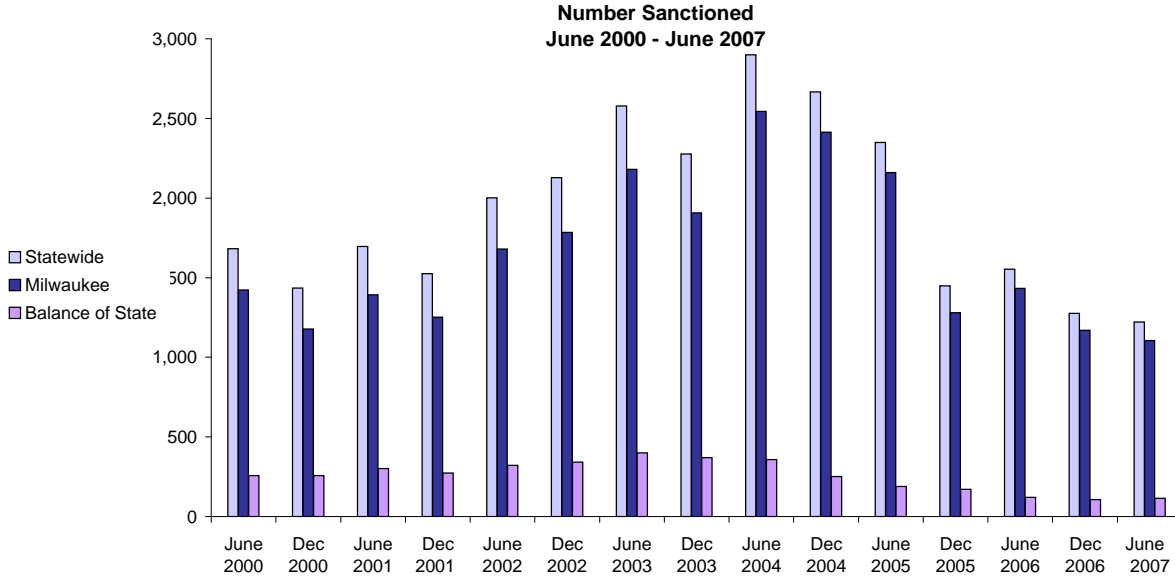
	Jun 2007	Jul 2007	Aug 2007	Sep 2007	Oct 2007	Nov 2007
Milwaukee County	443	432	464	461	503	528
Balance of State	19	19	18	18	22	24
Statewide	462	451	482	479	525	552

Source: CARES, Bureau of Program Services & Statistics, Division of Family Supports, Department of Workforce Development.

Note: Extensions can be granted after 60 months of lifetime participation. Extensions are granted when the participant is nearing the 60th month of their lifetime clock and they qualify for extended eligibility by meeting specific required criteria. The 60-month extensions first became relevant as of September 2001.

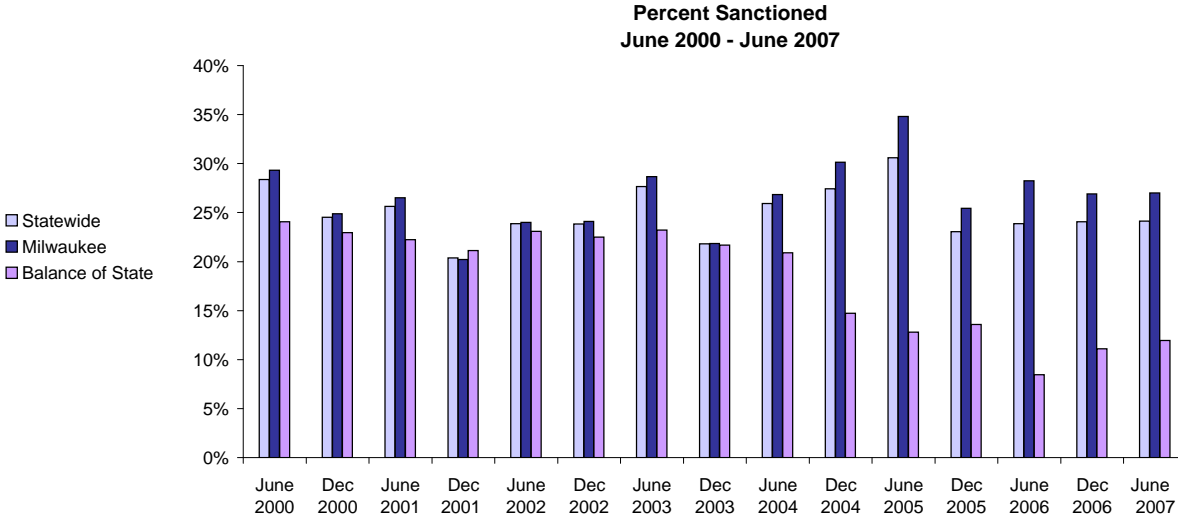
* Participants may be counted more than once if the participant's extension lasts longer than six months. Ongoing Extensions are an end of the month count.

W-2T and CSJ Participants Who Were Sanctioned



Number Sanctioned - Most Recent Six Months

	Jun 2007	Jul 2007	Aug 2007	Sep 2007	Oct 2007	Nov 2007
Milwaukee County	1,106	1,054	1,200	1,233	1,182	1,320
Balance of State	115	107	108	147	185	180
Statewide	1,221	1,161	1,308	1,380	1,367	1,500



Percent Sanctioned - Most Recent Six Months

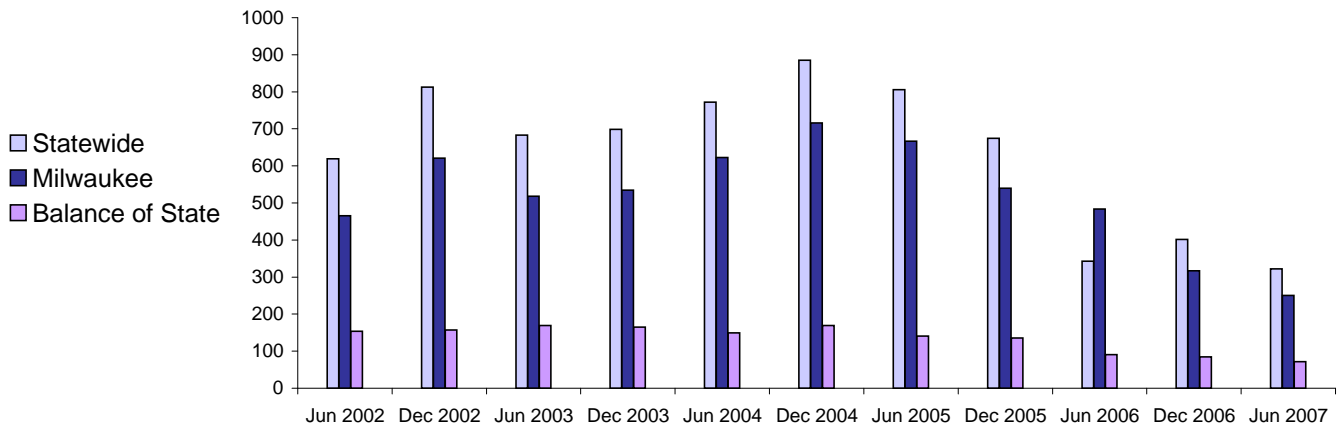
	Jun 2007	Jul 2007	Aug 2007	Sep 2007	Oct 2007	Nov 2007
Milwaukee County	27%	25%	28%	27%	26%	29%
Balance of State	12%	11%	11%	14%	17%	17%
Statewide	24%	23%	24%	25%	24%	27%

Source: CARES, Bureau of Program Services & Statistics, Division of Family Supports, Department of Workforce Development.

Note: Because sanction counts prior to September 1999 were counted differently they are not included in these graphs. The graphs on this page report information on the sanctionable population (W-2T and CSJ placements only). The data represented here are point in time during a month.

Entered Employments of W-2 Participants

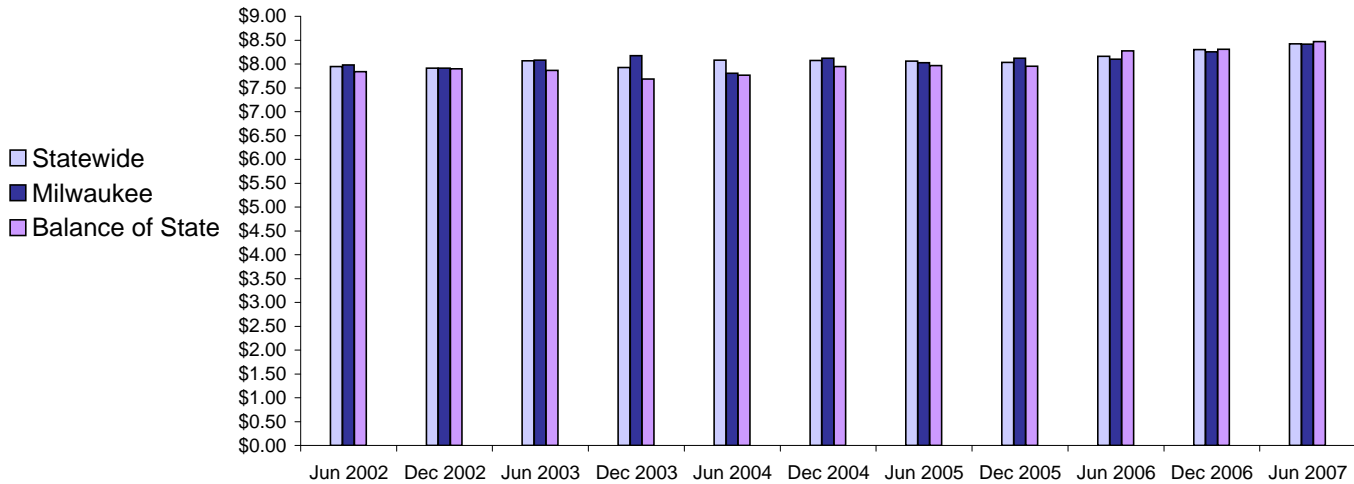
Six Month Average Number Entered Employment*
June 2002-June 2007



Total Number Of Entered Employments - Most Recent Six Months

	Jun 2007	Jul 2007	Aug 2007	Sep 2007	Oct 2007	Nov 2007
Milwaukee County	204	203	241	239	298	202
Balance of State	76	76	73	79	105	55
Statewide	280	279	314	318	403	257

Six Month Average Hourly Wage*
June 2002 - June 2007



Average Hourly Wage - Most Recent Six Months

	Jun 2007	Jul 2007	Aug 2007	Sep 2007	Oct 2007	Nov 2007
Milwaukee County	\$8.32	\$8.46	\$8.19	\$8.26	\$8.57	\$8.74
Balance of State	\$8.19	\$8.63	\$8.12	\$9.10	\$8.51	\$8.17
Statewide	\$8.29	\$8.50	\$8.17	\$8.47	\$8.55	\$8.62

Source: CARES, Bureau of Program Services & Statistics, Division of Family Supports, Department of Workforce Development.

Note: Entered Employment is a W-2 program performance measure counted when a participant obtains or increases wages in a new job.

Entered Employment of less than 30 days are excluded. Wage data are reported for jobs with hourly wages

*Average number entered employment per month for the six month period ending in June or December.