



## Wisconsin W-2 Participants in Paid Placements\*

Number of Participants in Paid Placements					
	One Year Ago	Last Month	This Month	Change in Most Recent Two Months	
	Oct 2006	Sep 2007	Oct 2007	Number	Percent
<b>Paid Participants:</b>					
Milwaukee County	4,865	4,827	4,856	29	0.6%
Balance of State	1,749	1,879	1,890	11	0.6%
Statewide Caseload	6,614	6,706	6,746	40	0.6%
<b>Milwaukee County Regions:</b>	<b>Oct 2006</b>	<b>Sep 2007</b>	<b>Oct 2007</b>	<b>Number</b>	<b>Percent</b>
Milwaukee NE YWCA	640	584	578	-6	-1.0%
Milwaukee SE UMOS	725	770	765	-5	-0.6%
Milwaukee Central UMOS	1,292	1,217	1,244	27	2.2%
Milwaukee NW MAXIMUS	1,097	1,072	1,084	12	1.1%
Milwaukee SW MAXIMUS	788	764	760	-4	-0.5%
Milwaukee SSI-Adv UMOS	322	420	420	0	0.0%
<b>Milwaukee County Total*:</b>	4,865	4,827	4,856	29	0.6%

Source: CARES, Bureau of Program Services & Statistics, Division of Family Supports, Department of Workforce Development.

\*Note: Milwaukee County total includes a small number of cases served by Milwaukee County Department of Social Services.

Note: The paid caseload includes the following categories of placements:

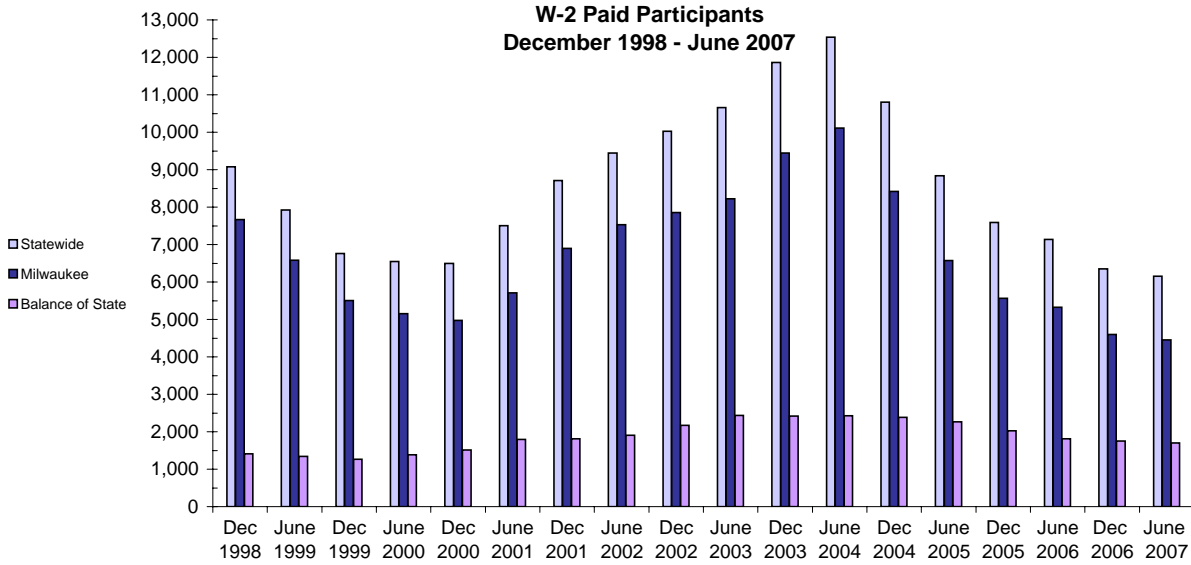
W-2 Transition (W-2T)..... A W-2 work-readiness practice placement for individuals who are unable to perform independent, self-sustaining work, but who are able to participate in work practice or other developmental activities and training up to their abilities.

Community Service Job (CSJ)..... A W-2 work-readiness practice placement designed to improve the employability of participants by providing work experience and training in the public and private sectors.

Trial Job (TJB)..... A W-2 subsidized employment position that provides work experience and training which may become permanent, unsubsidized employment. Paid directly to the employer.

Caretaker of Newborn (CMC)..... A custodial parent of a child who is 12 weeks old or less and who meets the financial and non-financial eligibility requirements for W-2 employment positions.

## W-2 Paid Participants and Benefits Paid

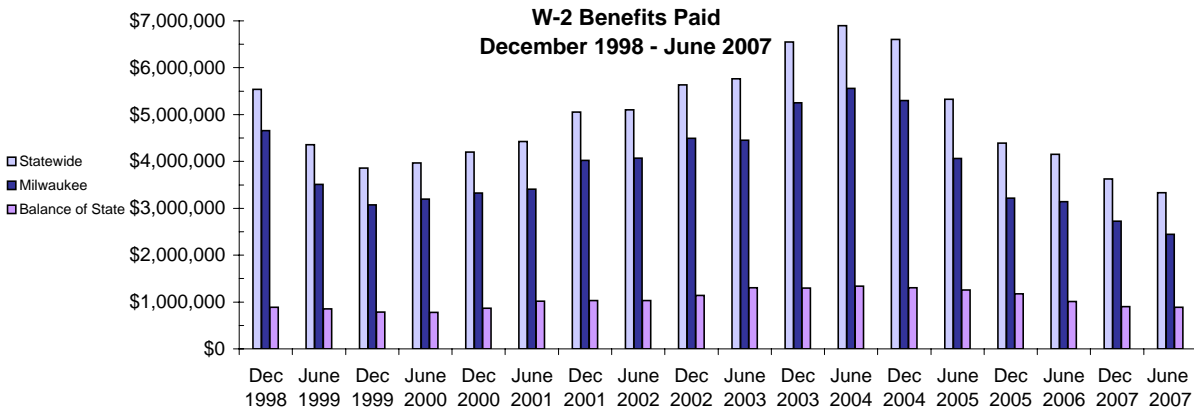


### W-2 Paid Participants - Most Recent Six Months

	May 2007	Jun 2007	Jul 2007	Aug 2007	Sep 2007	Oct 2007
<b>Milwaukee County</b>	4,339	4,452	4,523	4,720	4,827	4,856
<b>Balance of State</b>	1,705	1,705	1,731	1,858	1,879	1,890
<b>Statewide</b>	6,044	6,157	6,254	6,578	6,706	6,746

Source: CARES, Bureau of Program Services & Statistics, Division of Family Supports, Department of Workforce Development

Note: The paid participants included in this count are participants who were in a paid placement during the report month.



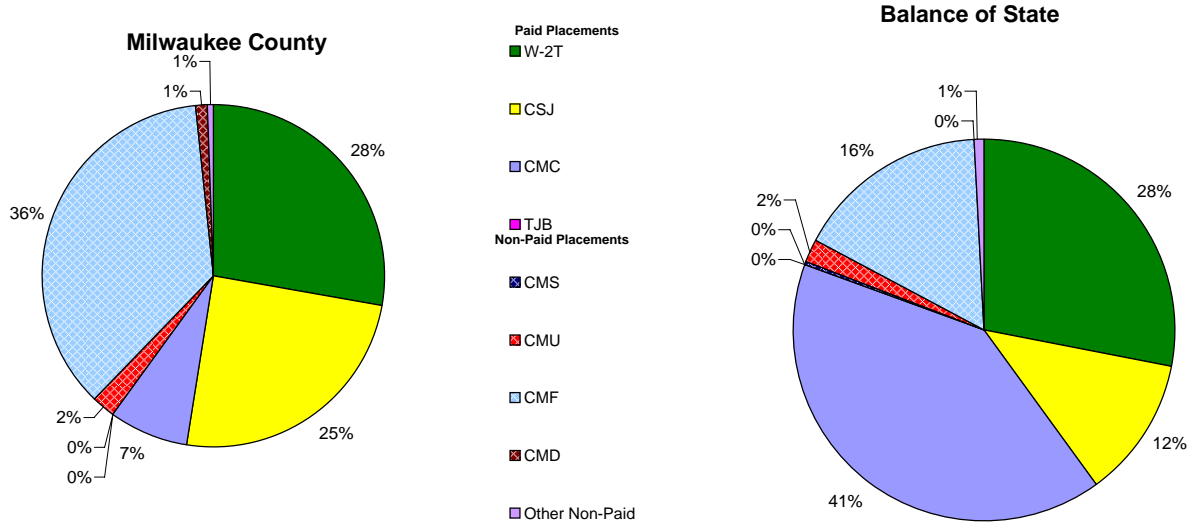
### W-2 Benefits Paid - Most Recent Six Months

	May 2007	Jun 2007	Jul 2007	Aug 2007	Sep 2007	Oct 2007
<b>Milwaukee County</b>	\$2,489,111	\$2,441,615	\$2,497,394	\$2,587,590	\$2,518,867	\$2,711,575
<b>Balance of State</b>	\$901,853	\$888,161	\$891,938	\$926,158	\$917,905	\$963,657
<b>Statewide</b>	\$3,390,964	\$3,329,776	\$3,389,332	\$3,513,748	\$3,436,772	\$3,675,232

Source: CARES, Bureau of Program Services & Statistics, Division of Family Supports, Department of Workforce Development

Note: The benefits paid are the total monthly net benefits after sanctions and recoupments are applied.

## Placement of W-2 Participants, October 2007



**Number and Percent of W-2 Participants in Placements**

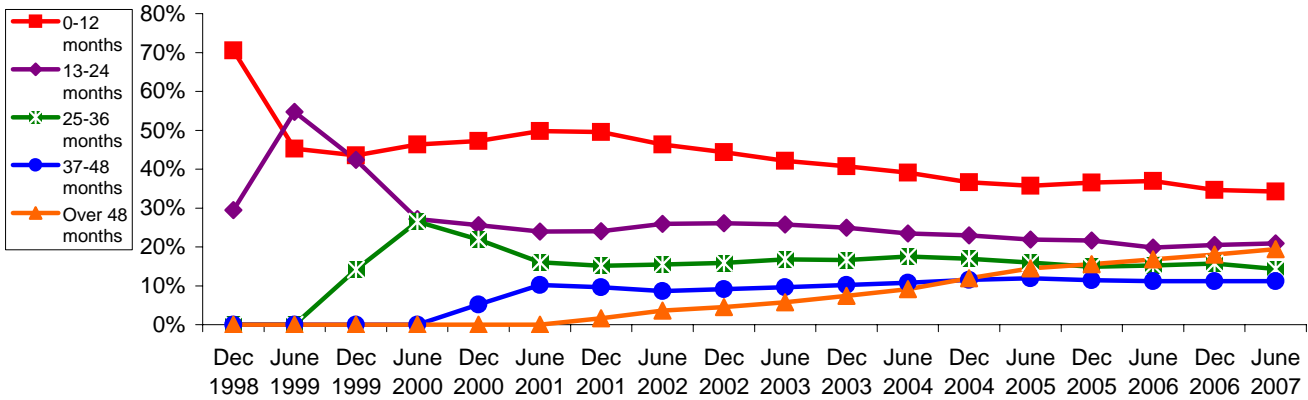
	Milwaukee County		BOS		Statewide	
	#	%	#	%	#	%
W-2T	2,217	46	646	34	2,863	42
CSJ	2,054	42	304	16	2,358	35
CMC	580	12	937	50	1,517	22
TJB	5	0	3	0	8	0
<b>Paid Total</b>	<b>4,856</b>	<b>100%</b>	<b>1,890</b>	<b>100%</b>	<b>6,746</b>	<b>100%</b>
CMS	0	0	1	0	1	0
CMU	182	6	47	11	229	6
CMF	2,900	90	381	85	3,281	90
CMD	74	2	0	0	74	2
Other Non-Paid	51	2	18	4	69	2
<b>Non-Paid Total</b>	<b>3,207</b>	<b>100%</b>	<b>447</b>	<b>100%</b>	<b>3,654</b>	<b>100%</b>
<b>Grand Total</b>	<b>8,063</b>		<b>2,337</b>		<b>10,400</b>	

Source: CARES, Bureau of Program Services & Statistics, Division of Family Supports, Department of Workforce Development.

- Note: W-2 Transition (W-2T)..... A W-2 work-readiness practice placement for individuals who are unable to perform independent, self-sustaining work, but who are able to participate in work practice or other developmental activities and training up to their abilities.
- Community Service Job (CSJ)..... A W-2 work-readiness practice placement designed to improve the employability of participants by providing work experience and training in the public and private sectors.
- Trial Job (TJB)..... A W-2 subsidized employment position that provides work experience and training which may become permanent, unsubsidized employment. Subsidy is paid directly to the employer.
- Case Mgmt - Caretaker of a Newborn (CMC)..... A custodial parent of a child who is 12 weeks old or less and who meets the financial and non-financial eligibility requirements for W-2 employment positions.
- Case Mgmt - Pregnancy (CMP)..... A participant with a medically verified pregnancy.
- Case Mgmt - Service for Job Ready (CMS)..... Used for case management services for unemployed individuals who have been assessed as having the capability of obtaining immediate full-time employment.
- Case Mgmt - Follow - Up ( CMF )..... Used for Placement for Individuals who move from a W-2 benefit Placement to unsubsidized employment.
- Case Mgmt- Denied Extension (CMD)..... Participants who exhausted time-limited benefits but are receiving services.
- Case Mgmt - Service for Working (CMU)..... Used for individuals working in unsubsidized employment who are without barriers to full-time employment.
- Case Mgmt - Non-Custodial Parent (CMN)..... Used for case management services for non-custodial parents.
- Case Mgmt - Minor Parent (CMM)..... Used for case management services for a custodial minor parent.

## Number of Months Served in W-2 \*

### Percentage Distribution- Statewide December 1998- June 2007

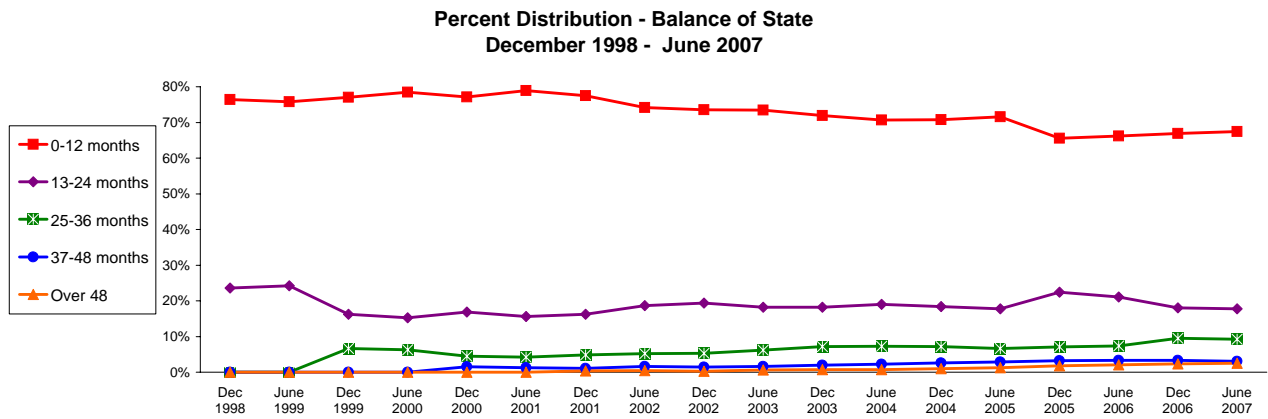
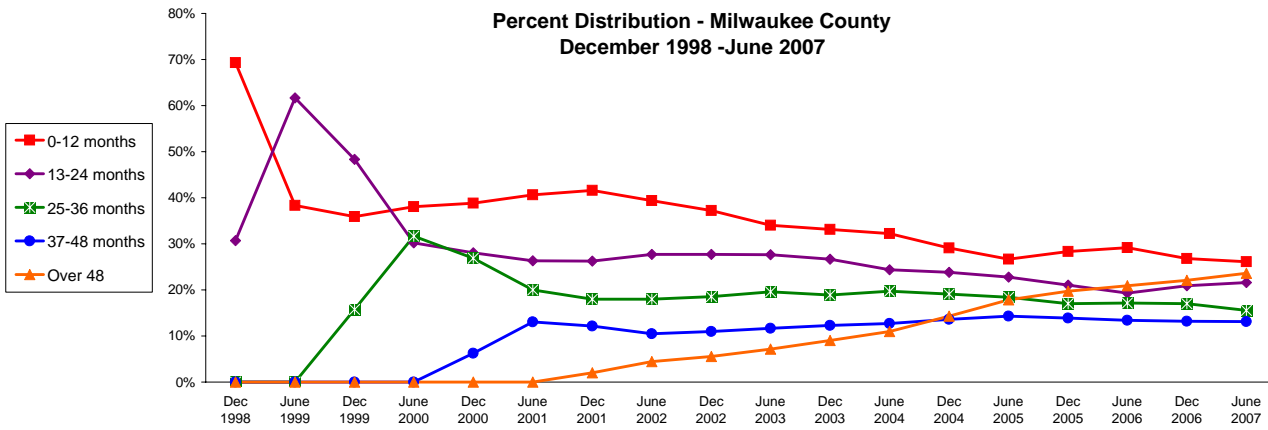


Source: CARES, Bureau of Program Services & Statistics, Division of Family Supports, Department of Workforce Development.  
 \* Note: Length of stay is determined for the W-2 participants in the report month by the number of total months a participant has been in W-2 since the beginning of the program.

### Number of Months Served in W-2 - Most Recent Six Months

	Months	May 2007	Jun 2007	Jul 2007	Aug 2007	Sep 2007	Oct 2007
<b>Milwaukee County</b>	0-12	2,031	2,053	2,079	2,175	2,218	2,264
	13-24	1,689	1,694	1,691	1,689	1,726	1,675
	25-36	1,214	1,220	1,242	1,252	1,269	1,301
	37-48	1,044	1,033	1,056	1,047	1,059	1,046
	Over 48	1,879	1,855	1,869	1,874	1,908	1,865
<b>Balance of State</b>	0-12	1,583	1,586	1,644	1,760	1,740	1,774
	13-24	425	417	403	399	381	402
	25-36	209	218	209	197	197	196
	37-48	72	71	77	66	77	77
	Over 48	65	60	60	63	59	56
<b>Statewide</b>	0-12	3,378	3,410	3,491	3,693	3,708	3,789
	13-24	2,085	2,083	2,066	2,058	2,079	2,058
	25-36	1,417	1,429	1,442	1,448	1,461	1,484
	37-48	1,128	1,112	1,146	1,122	1,148	1,132
	Over 48	1,958	1,933	1,944	1,951	1,980	1,937

## Number of Months Served in W-2\* , Continued

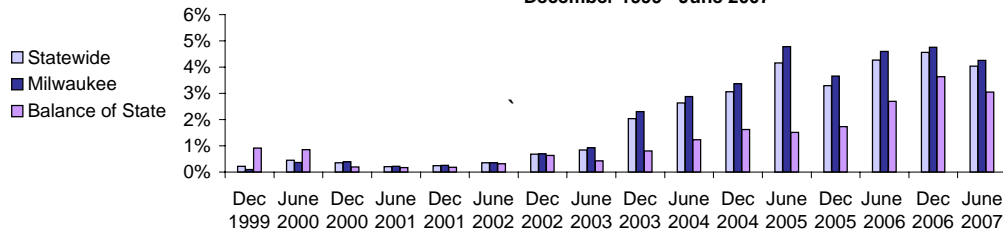


Source: CARES, Bureau of Program Services & Statistics, Division of Family Services, Department of Workforce Development.

\* Length of stay is determined for the W-2 participants in the report month by the number of total months a participant has been in W-2 since the beginning of the program. Participants may be counted more than once if their geographic location changes from Milwaukee to Balance of State or vice versa.

## Extensions Granted for 24 - Month Clocks\*

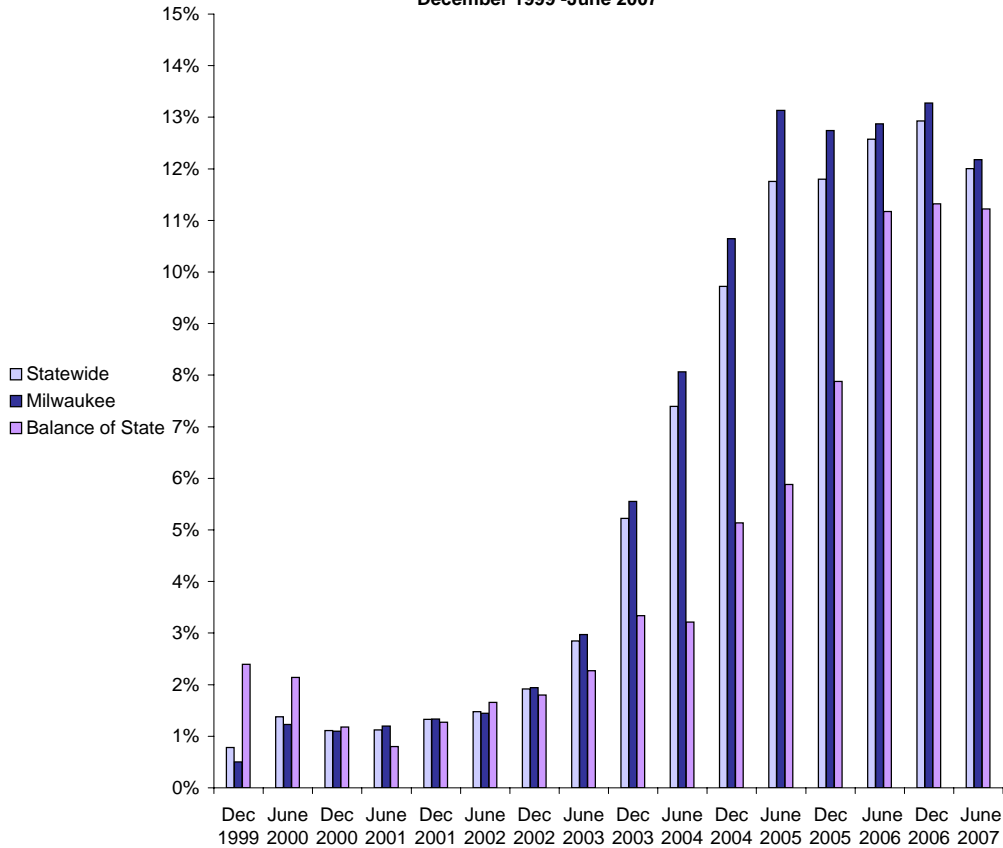
**Percent of W-2T & CSJ Participants with Beginning Extensions  
December 1999 - June 2007**



**Number of Beginning Extensions - Most Recent Six Months**

	May 2007	Jun 2007	Jul 2007	Aug 2007	Sep 2007	Oct 2007
<b>Milwaukee County</b>	165	167	139	173	166	184
<b>Balance of State</b>	24	27	21	21	25	13
<b>Statewide</b>	189	194	160	194	191	197

**Percent of W-2T & CSJ Participants with Ongoing Extensions  
December 1999 - June 2007**



**Number of Ongoing Extensions - Most Recent Six Months**

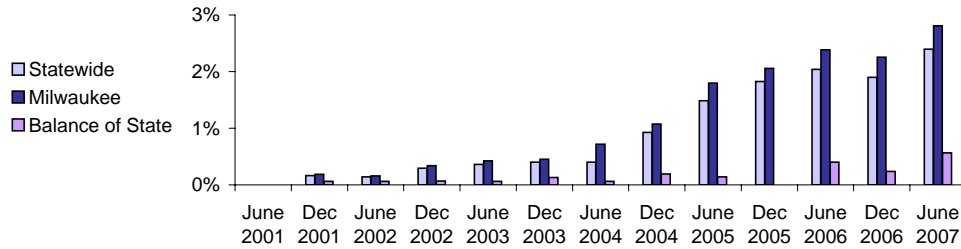
	May 2007	Jun 2007	Jul 2007	Aug 2007	Sep 2007	Oct 2007
<b>Milwaukee County</b>	430	438	454	471	495	527
<b>Balance of State</b>	78	90	83	78	75	66
<b>Statewide</b>	508	528	537	549	570	593

Source: CARES, Bureau of Program Services & Statistics, Division of Family Supports, Department of Workforce Development.

\* Extensions can be granted after 24 months of participation in a W-2T or CSJ placement. Extensions are granted when the participant is nearing the 24th month of their placement clock and they qualify for extended eligibility by meeting specific required criteria. Participants may be counted more than once if the participant's extension lasts longer than six months. Ongoing extensions are an end of the month count.

## Extensions Granted for 60- Month Clocks\*

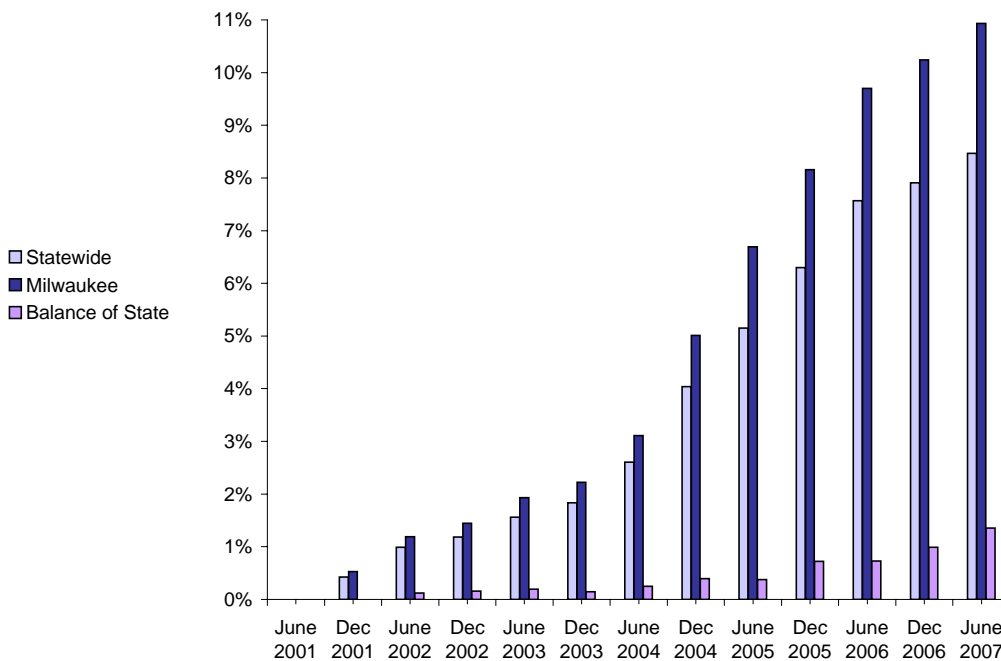
**Percent of Participants with Beginning Extensions  
June 2001 - June 2007**



**Number of Beginning Extensions - Most Recent Six Months**

	May 2007	Jun 2007	Jul 2007	Aug 2007	Sep 2007	Oct 2007
<b>Milwaukee County</b>	101	110	82	119	95	107
<b>Balance of State</b>	4	5	5	6	5	8
<b>Statewide</b>	105	115	87	125	100	115

**Percent of Participants with Ongoing Extensions  
June 2001 - June 2007**



**Number of Ongoing Extensions - Most Recent Six Months**

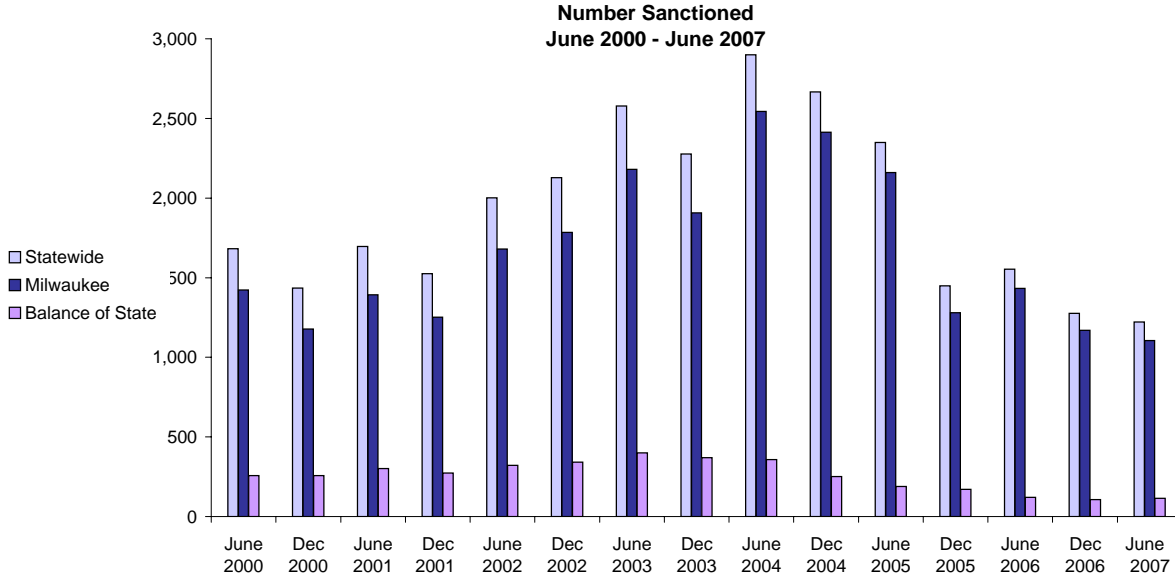
	May 2007	Jun 2007	Jul 2007	Aug 2007	Sep 2007	Oct 2007
<b>Milwaukee County</b>	430	443	432	464	461	503
<b>Balance of State</b>	22	19	19	18	18	22
<b>Statewide</b>	452	462	451	482	479	525

Source: CARES, Bureau of Program Services & Statistics, Division of Family Supports, Department of Workforce Development.

Note: Extensions can be granted after 60 months of lifetime participation. Extensions are granted when the participant is nearing the 60th month of their lifetime clock and they qualify for extended eligibility by meeting specific required criteria. The 60- month extensions first became relevant as of September 2001.

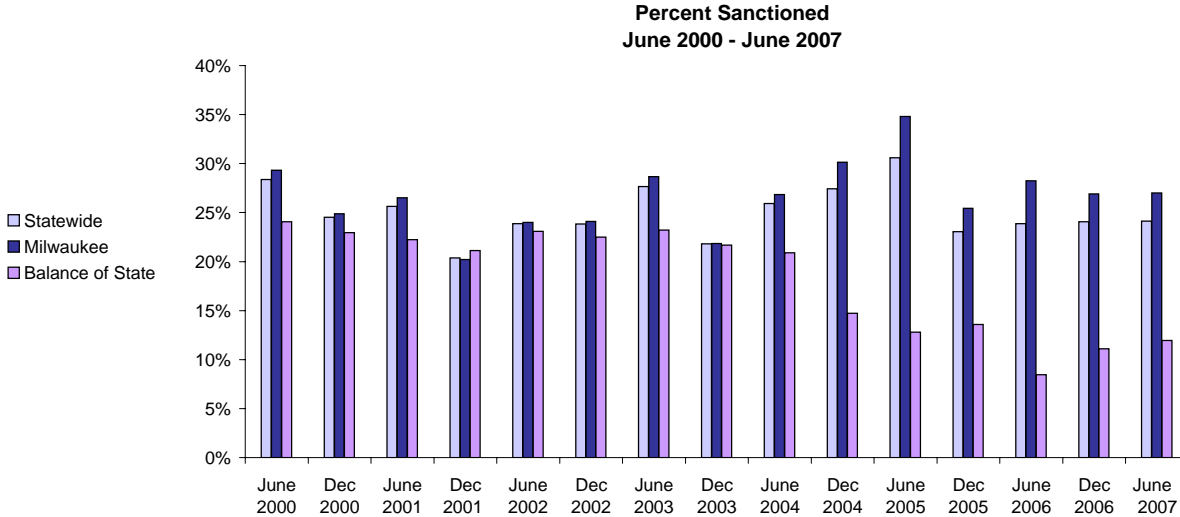
\* Participants may be counted more than once if the participant's extension lasts longer than six months. Ongoing Extensions are an end of the month count.

## W-2T and CSJ Participants Who Were Sanctioned



### Number Sanctioned - Most Recent Six Months

	May 2007	Jun 2007	Jul 2007	Aug 2007	Sep 2007	Oct 2007
<b>Milwaukee County</b>	1,081	1,106	1,054	1,200	1,233	1,182
<b>Balance of State</b>	111	115	107	108	147	185
<b>Statewide</b>	1,192	1,221	1,161	1,308	1,380	1,367



### Percent Sanctioned - Most Recent Six Months

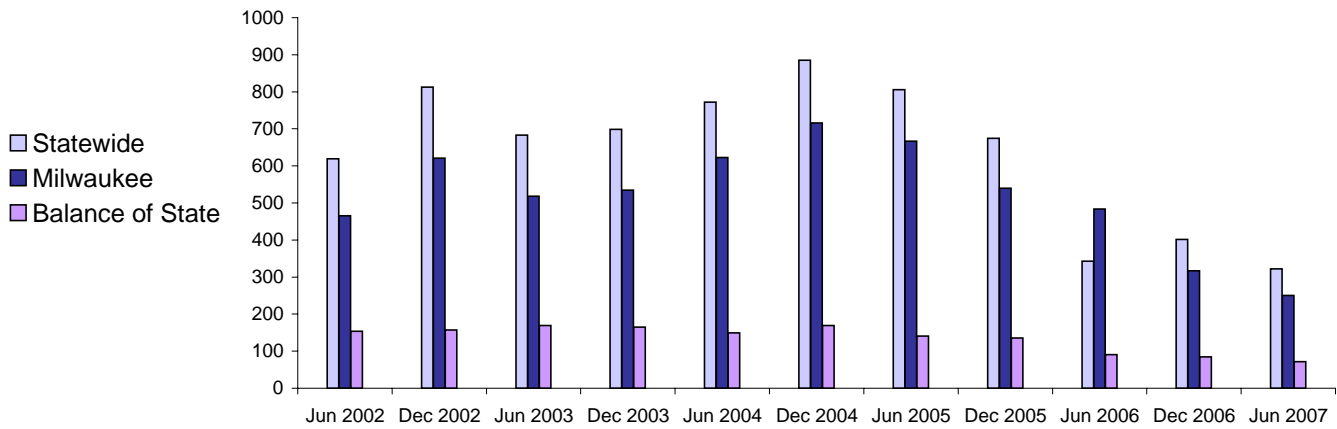
	May 2007	Jun 2007	Jul 2007	Aug 2007	Sep 2007	Oct 2007
<b>Milwaukee County</b>	27%	27%	25%	28%	27%	26%
<b>Balance of State</b>	12%	12%	11%	11%	14%	17%
<b>Statewide</b>	24%	24%	23%	24%	25%	24%

Source: CARES, Bureau of Program Services & Statistics, Division of Family Supports, Department of Workforce Development.

Note: Because sanction counts prior to September 1999 were counted differently they are not included in these graphs. The graphs on this page report information on the sanctionable population (W-2T and CSJ placements only). The data represented here are point in time during a month.

# Entered Employments of W-2 Participants

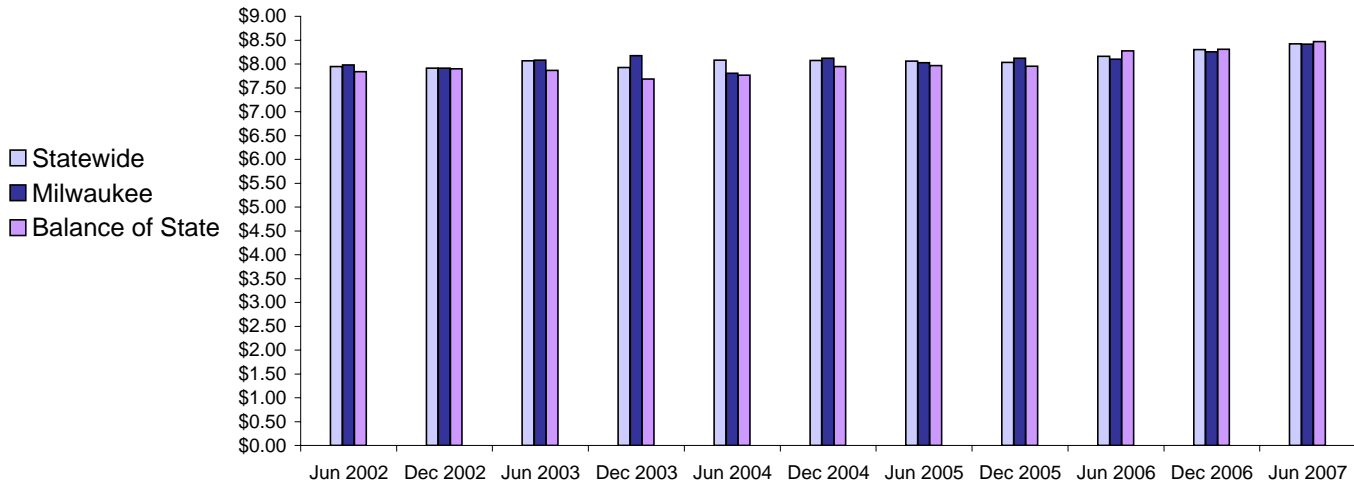
**Six Month Average Number Entered Employment\***  
June 2002-June 2007



**Total Number Of Entered Employments - Most Recent Six Months**

	May 2007	Jun 2007	Jul 2007	Aug 2007	Sep 2007	Oct 2007
<b>Milwaukee County</b>	240	204	203	241	239	298
<b>Balance of State</b>	79	76	76	73	79	105
<b>Statewide</b>	319	280	279	314	318	403

**Six Month Average Hourly Wage\***  
June 2002 - June 2007



**Average Hourly Wage - Most Recent Six Months**

	May 2007	Jun 2007	Jul 2007	Aug 2007	Sep 2007	Oct 2007
<b>Milwaukee County</b>	\$8.35	\$8.32	\$8.46	\$8.19	\$8.26	\$8.57
<b>Balance of State</b>	\$8.06	\$8.19	\$8.63	\$8.12	\$9.10	\$8.51
<b>Statewide</b>	\$8.28	\$8.29	\$8.50	\$8.17	\$8.47	\$8.55

Source: CARES, Bureau of Program Services & Statistics, Division of Family Supports, Department of Workforce Development.

Note: Entered Employment is a W-2 program performance measure counted when a participant obtains or increases wages in a new job.

Entered Employment of less than 30 days are excluded. Wage data are reported for jobs with hourly wages

\*Average number entered employment per month for the six month period ending in June or December.