

Wisconsin W-2 Participants in Paid Placements*

Number of Participants in Paid Placements					
	One Year Ago	Last Month	This Month	Change in Most Recent Two Months	
	Jul 2006	Jun 2007	Jul 2007	Number	Percent
Paid Participants:					
Milwaukee County	5,252	4,452	4,523	71	1.6%
Balance of State	1,803	1,705	1,731	26	1.5%
Statewide Caseload	7,055	6,157	6,254	97	1.6%
Milwaukee County Regions:	Jul 2006	Jun 2007	Jul 2007	Number	Percent
Milwaukee NE YWCA	655	537	534	-3	-0.6%
Milwaukee SE UMOS	733	686	679	-7	-1.0%
Milwaukee Central UMOS	1,371	1,072	1,101	29	2.7%
Milwaukee NW MAXIMUS	1,252	1,043	1,052	9	0.9%
Milwaukee SW MAXIMUS	946	715	738	23	3.2%
Milwaukee SSI-Adv UMOS	295	399	417	18	4.5%
Milwaukee County Total*:	5,252	4,452	4,523	71	1.6%

Source: CARES, Bureau of Program Services & Statistics, Division of Family Supports, Department of Workforce Development.

*Note: Milwaukee County total includes a small number of cases served by Milwaukee County Department of Social Services.

Note: The paid caseload includes the following categories of placements:

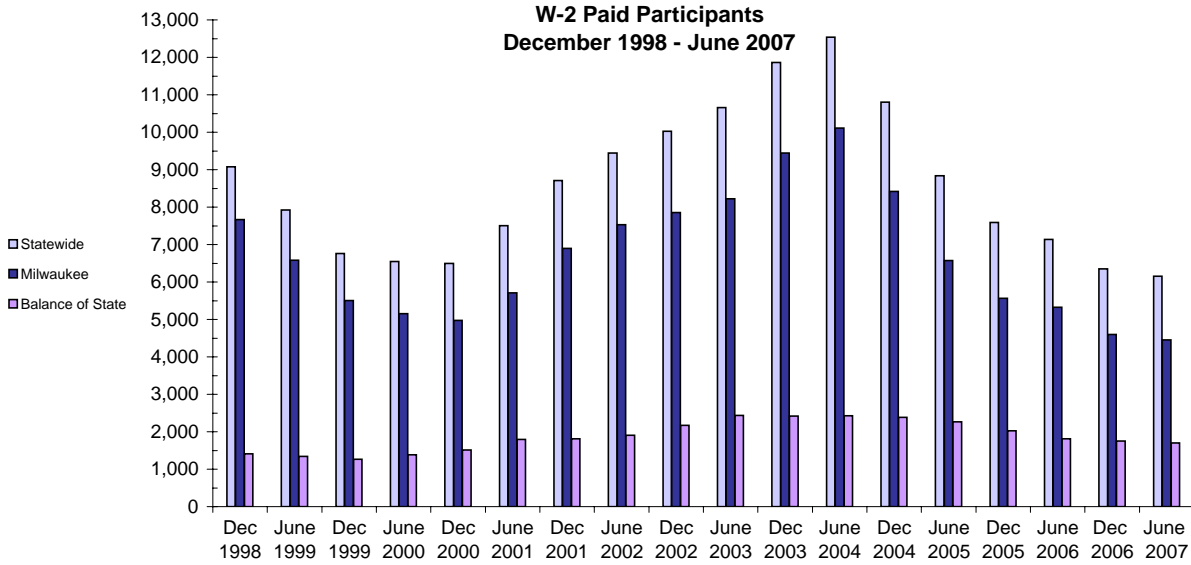
W-2 Transition (W-2T)..... A W-2 work-readiness practice placement for individuals who are unable to perform independent, self-sustaining work, but who are able to participate in work practice or other developmental activities and training up to their abilities.

Community Service Job (CSJ)..... A W-2 work-readiness practice placement designed to improve the employability of participants by providing work experience and training in the public and private sectors.

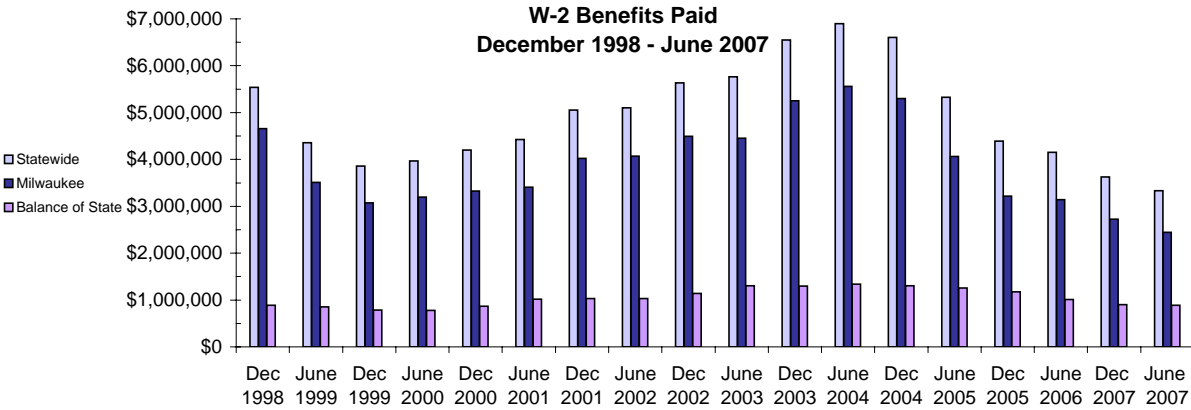
Trial Job (TJB)..... A W-2 subsidized employment position that provides work experience and training which may become permanent, unsubsidized employment. Paid directly to the employer.

Caretaker of Newborn (CMC)..... A custodial parent of a child who is 12 weeks old or less and who meets the financial and non-financial eligibility requirements for W-2 employment positions.

W-2 Paid Participants and Benefits Paid

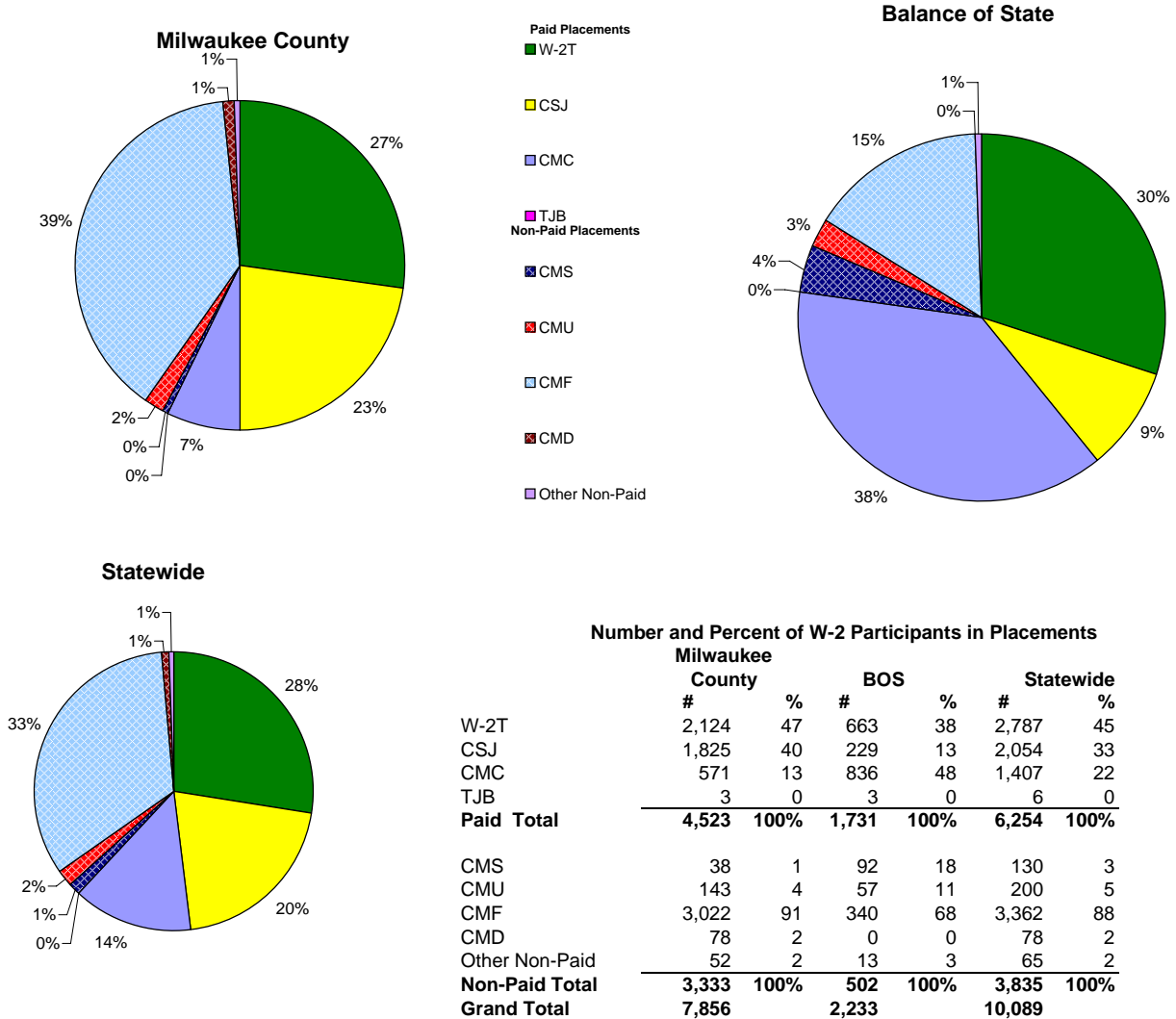


Source: CARES, Bureau of Program Services & Statistics, Division of Family Supports, Department of Workforce Development
 Note: The paid participants included in this count are participants who were in a paid placement during the report month.



Source: CARES, Bureau of Program Services & Statistics, Division of Family Supports, Department of Workforce Development
 Note: The benefits paid are the total monthly net benefits after sanctions and recoupments are applied.

Placement of W-2 Participants, July 2007

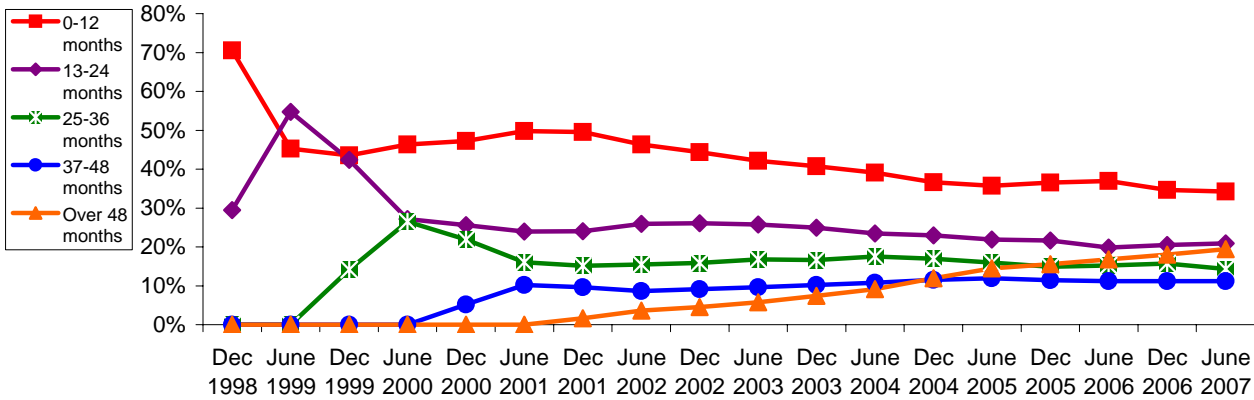


Source: CARES, Bureau of Program Services & Statistics, Division of Family Supports, Department of Workforce Development.

- Note: W-2 Transition (W-2T)..... A W-2 work-readiness practice placement for individuals who are unable to perform independent, self-sustaining work, but who are able to participate in work practice or other developmental activities and training up to their abilities.
- Community Service Job (CSJ)..... A W-2 work-readiness practice placement designed to improve the employability of participants by providing work experience and training in the public and private sectors.
- Trial Job (TJB)..... A W-2 subsidized employment position that provides work experience and training which may become permanent, unsubsidized employment. Subsidy is paid directly to the employer.
- Case Mgmt - Caretaker of a Newborn (CMC)..... A custodial parent of a child who is 12 weeks old or less and who meets the financial and non-financial eligibility requirements for W-2 employment positions.
- Case Mgmt - Pregnancy (CMP)..... A participant with a medically verified pregnancy.
- Case Mgmt - Service for Job Ready (CMS)..... Used for case management services for unemployed individuals who have been assessed as having the capability of obtaining immediate full-time employment.
- Case Mgmt - Follow - Up (CMF)..... Used for Placement for Individuals who move from a W-2 benefit Placement to unsubsidized employment.
- Case Mgmt- Denied Extension (CMD)..... Participants who exhausted time-limited benefits but are receiving services.
- Case Mgmt - Service for Working (CMU)..... Used for individuals working in unsubsidized employment who are without barriers to full-time employment.
- Case Mgmt - Non-Custodial Parent (CMN)..... Used for case management services for non-custodial parents.
- Case Mgmt - Minor Parent (CMM)..... Used for case management services for a custodial minor parent.

Number of Months Served in W-2 *

Percentage Distribution- Statewide December 1998- June 2007

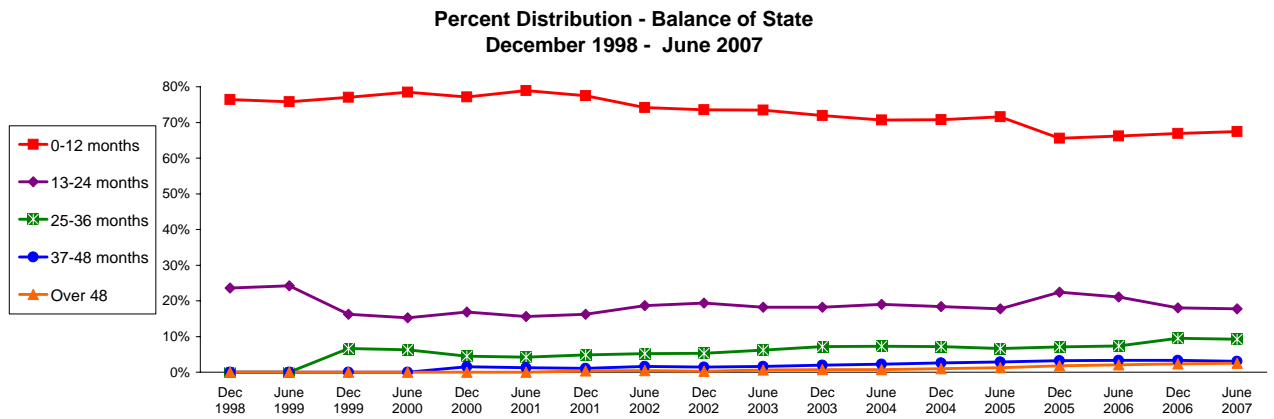
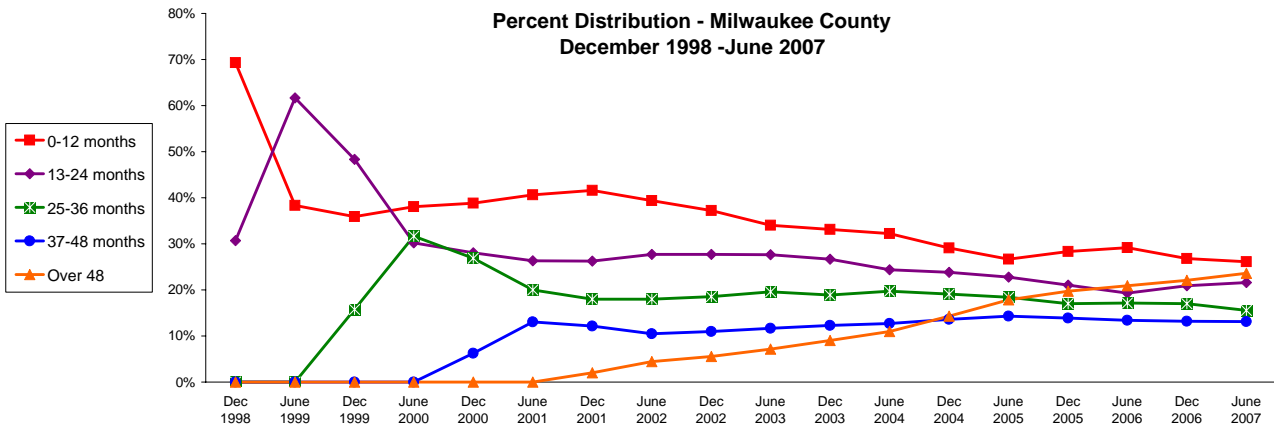


Source: CARES, Bureau of Program Services & Statistics, Division of Family Supports, Department of Workforce Development.
 * Note: Length of stay is determined for the W-2 participants in the report month by the number of total months a participant has been in W-2 since the beginning of the program.

Number of Months Served in W-2 - Most Recent Six Months

	Months	Feb 2007	Mar 2007	Apr 2007	May 2007	Jun 2007	Jul 2007
Milwaukee County	0-12	2,033	1,989	1,979	2,031	2,053	2,079
	13-24	1,632	1,704	1,664	1,689	1,694	1,691
	25-36	1,301	1,271	1,231	1,214	1,220	1,242
	37-48	1,050	1,065	1,030	1,044	1,033	1,056
	Over 48	1,829	1,870	1,851	1,879	1,855	1,869
Balance of State	0-12	1,576	1,559	1,549	1,583	1,586	1,644
	13-24	442	437	437	425	417	403
	25-36	233	215	214	209	218	209
	37-48	73	71	70	72	71	77
	Over 48	58	59	58	65	60	60
Statewide	0-12	3,362	3,305	3,295	3,378	3,410	3,491
	13-24	2,039	2,116	1,073	2,085	2,083	2,066
	25-36	1,539	1,484	1,439	1,417	1,429	1,442
	37-48	1,126	1,144	1,108	1,128	1,112	1,146
	Over 48	1,904	1,943	1,924	1,958	1,933	1,944

Number of Months Served in W-2* , Continued

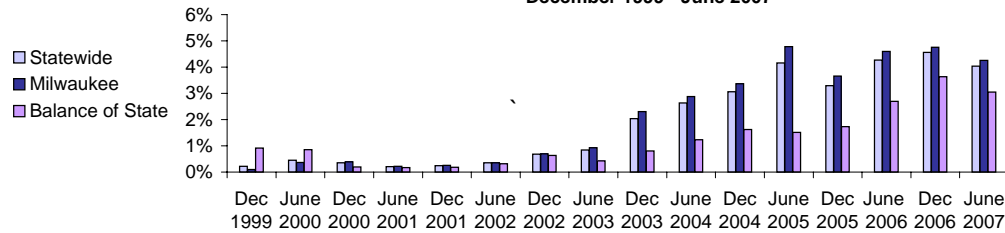


Source: CARES, Bureau of Program Services & Statistics, Division of Family Services, Department of Workforce Development.

* Length of stay is determined for the W-2 participants in the report month by the number of total months a participant has been in W-2 since the beginning of the program. Participants may be counted more than once if their geographic location changes from Milwaukee to Balance of State or vice versa.

Extensions Granted for 24 - Month Clocks*

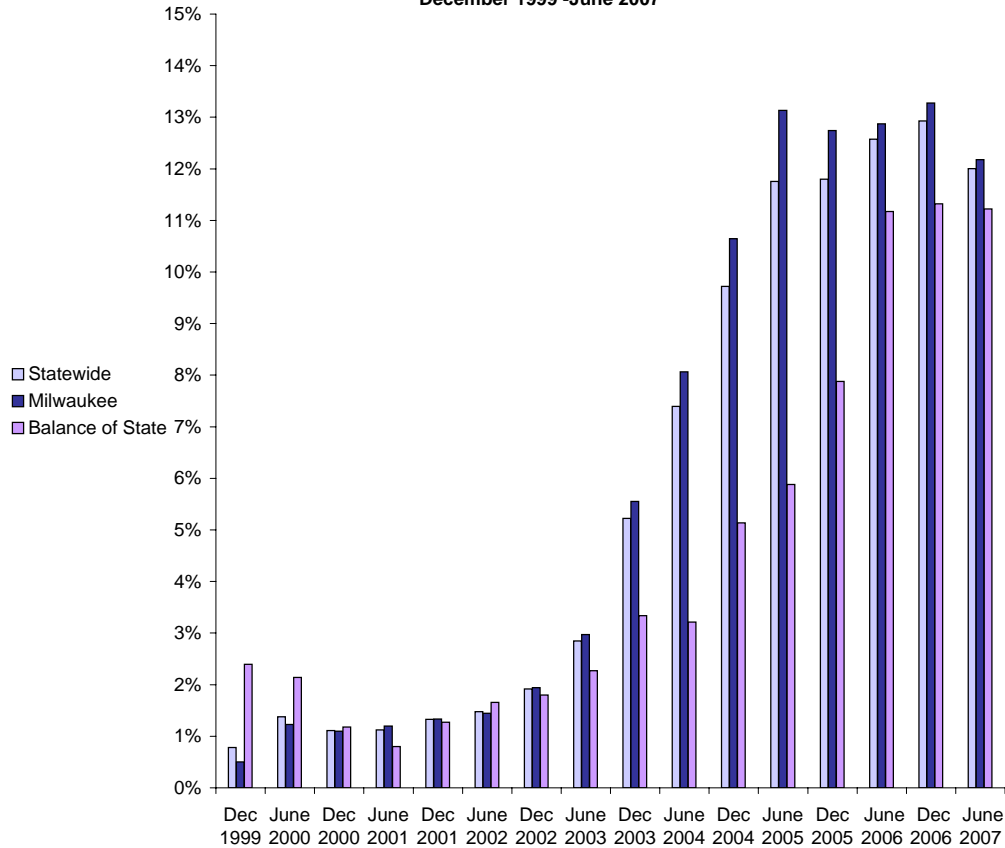
**Percent of W-2T & CSJ Participants with Beginning Extensions
December 1999 - June 2007**



Number of Beginning Extensions - Most Recent Six Months

	Feb 2007	Mar 2007	Apr 2007	May 2007	Jun 2007	Jul 2007
Milwaukee County	153	183	139	165	167	139
Balance of State	20	23	23	24	27	21
Statewide	173	206	162	189	194	160

**Percent of W-2T & CSJ Participants with Ongoing Extensions
December 1999 - June 2007**



Number of Ongoing Extensions - Most Recent Six Months

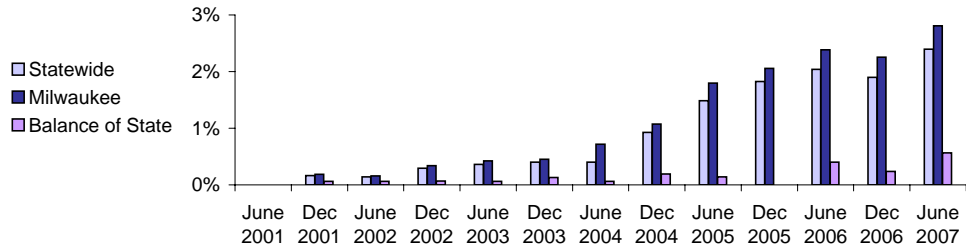
	Feb 2007	Mar 2007	Apr 2007	May 2007	Jun 2007	Jul 2007
Milwaukee County	463	466	436	430	438	454
Balance of State	82	80	86	78	90	83
Statewide	545	546	522	508	528	537

Source: CARES, Bureau of Program Services & Statistics, Division of Family Supports, Department of Workforce Development.

* Extensions can be granted after 24 months of participation in a W-2T or CSJ placement. Extensions are granted when the participant is nearing the 24th month of their placement clock and they qualify for extended eligibility by meeting specific required criteria. Participants may be counted more than once if the participant's extension lasts longer than six months. Ongoing extensions are an end of the month count.

Extensions Granted for 60- Month Clocks*

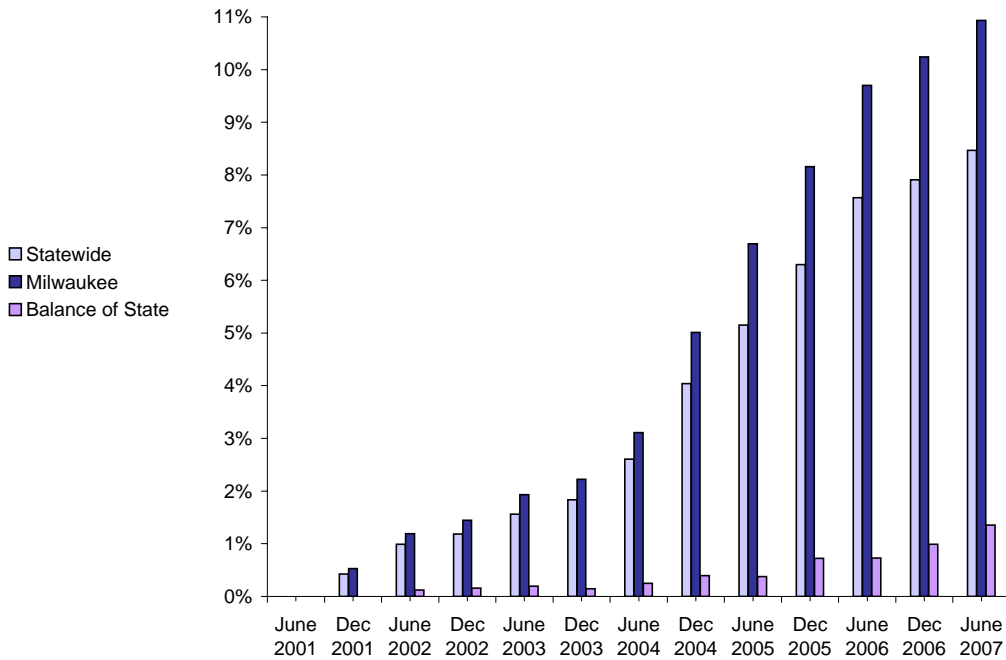
**Percent of Participants with Beginning Extensions
June 2001 - June 2007**



Number of Beginning Extensions - Most Recent Six Months

	Feb 2007	Mar 2007	Apr 2007	May 2007	Jun 2007	Jul 2007
Milwaukee County	108	94	102	101	110	82
Balance of State	3	9	4	4	5	5
Statewide	111	103	106	105	115	87

**Percent of Participants with Ongoing Extensions
June 2001 - June 2007**



Number of Ongoing Extensions - Most Recent Six Months

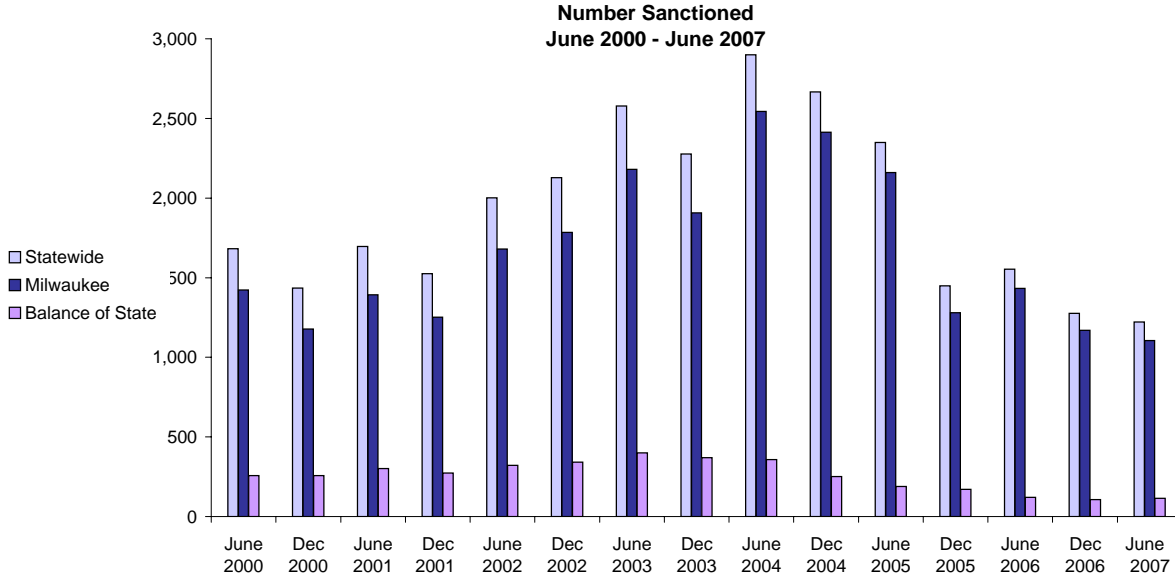
	Feb 2007	Mar 2007	Apr 2007	May 2007	Jun 2007	Jul 2007
Milwaukee County	441	433	419	430	443	432
Balance of State	15	18	19	22	19	19
Statewide	456	451	438	452	462	451

Source: CARES, Bureau of Program Services & Statistics, Division of Family Supports, Department of Workforce Development.

Note: Extensions can be granted after 60 months of lifetime participation. Extensions are granted when the participant is nearing the 60th month of their lifetime clock and they qualify for extended eligibility by meeting specific required criteria. The 60- month extensions first became relevant as of September 2001.

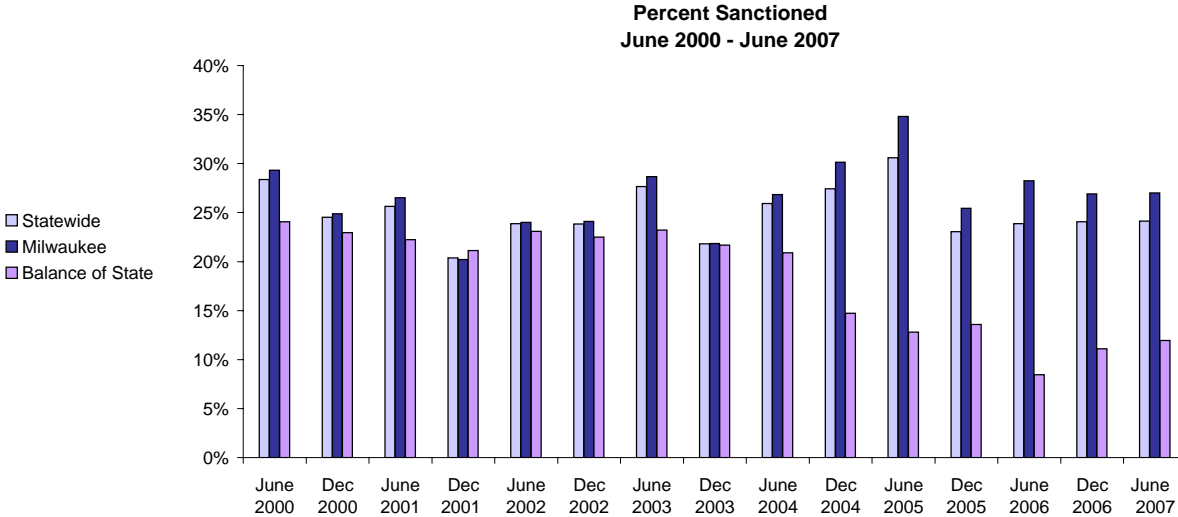
* Participants may be counted more than once if the participant's extension lasts longer than six months. Ongoing Extensions are an end of the month count.

W-2T and CSJ Participants Who Were Sanctioned



Number Sanctioned - Most Recent Six Months

	Feb 2007	Mar 2007	Apr 2007	May 2007	Jun 2008	Jul 2007
Milwaukee County	1,172	1,107	1,014	1,081	1,106	1,054
Balance of State	107	80	93	111	115	107
Statewide	1,279	1,187	1,107	1,192	1,221	1,161



Percent Sanctioned - Most Recent Six Months

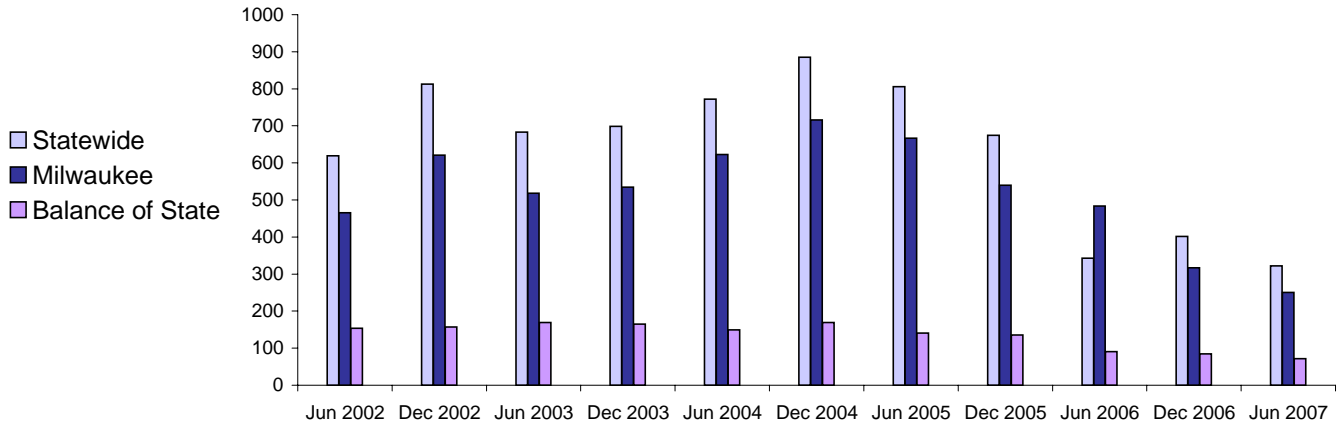
	Feb 2007	Mar 2007	Apr 2007	May 2007	Jun 2007	Jul 2007
Milwaukee County	28%	25%	23%	27%	27%	25%
Balance of State	12%	12%	16%	12%	12%	11%
Statewide	25%	24%	22%	24%	24%	23%

Source: CARES, Bureau of Program Services & Statistics, Division of Family Supports, Department of Workforce Development.

Note: Because sanction counts prior to September 1999 were counted differently they are not included in these graphs. The graphs on this page report information on the sanctionable population (W-2T and CSJ placements only). The data represented here are point in time during a month.

Entered Employments of W-2 Participants

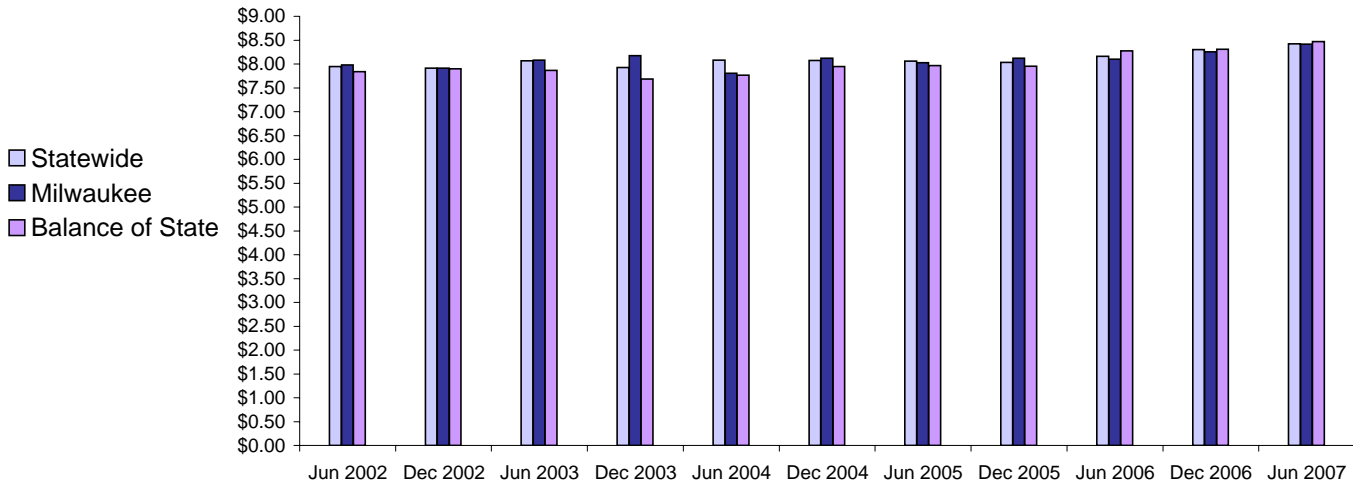
Six Month Average Number Entered Employment*
June 2002-June 2007



Total Number Of Entered Employments - Most Recent Six Months

	Feb 2007	Mar 2007	Apr 2007	May 2007	Jun 2007	Jul 2007
Milwaukee County	226	290	252	240	204	203
Balance of State	62	68	70	79	76	76
Statewide	288	358	322	319	280	279

Six Month Average Hourly Wage*
June 2002 - June 2007



Average Hourly Wage - Most Recent Six Months

	Feb 2007	Mar 2007	Apr 2007	May 2007	Jun 2007	Jul 2007
Milwaukee County	\$8.50	\$8.42	\$8.30	\$8.35	\$8.32	\$8.46
Balance of State	\$8.62	\$8.69	\$8.36	\$8.06	\$8.19	\$8.63
Statewide	\$8.53	\$8.47	\$8.32	\$8.28	\$8.29	\$8.50

Source: CARES, Bureau of Program Services & Statistics, Division of Family Supports, Department of Workforce Development.

Note: Entered Employment is a W-2 program performance measure counted when a participant obtains or increases wages in a new job.

Entered Employment of less than 30 days are excluded. Wage data are reported for jobs with hourly wages

*Average number entered employment per month for the six month period ending in June or December.