

Wisconsin Works (W-2) Critical Indicators



**June
2007**

Bureau of Workforce Information
Division of Workforce Solutions
Department of Workforce Development



State of Wisconsin

Wisconsin W-2 Participants in Paid Placements*

Number of Participants in Paid Placements					
	One Year Ago	Last Month	This Month	Change in Most Recent Two Months	
	Jun 2006	May 2007	Jun 2007	Number	Percent
Paid Participants:					
Milwaukee County	5,324	4,339	4,452	113	2.6%
Balance of State	1,814	1,705	1,705	0	0.0%
Statewide Caseload	7,138	6,044	6,157	113	1.9%
Milwaukee County Regions:	Jun 2006	May 2007	Jun 2007	Number	Percent
Milwaukee NE YWCA	619	541	537	-4	-0.7%
Milwaukee SE UMOS	744	684	686	2	0.3%
Milwaukee Central UMOS	1,399	1,024	1,072	48	4.7%
Milwaukee NW MAXIMUS	1,301	1,042	1,043	1	0.1%
Milwaukee SW MAXIMUS	952	687	715	28	4.1%
Milwaukee SSI-Adv UMOS	306	360	399	39	10.8%
Milwaukee County Total*:	5,324	4,339	4,452	113	2.6%

Source: CARES, Bureau of Workforce Information, Division of Workforce Solutions, Department of Workforce Development.

*Note: Milwaukee County total includes a small number of cases served by Milwaukee County Department of Social Services.

Note: The paid caseload includes the following categories of placements:

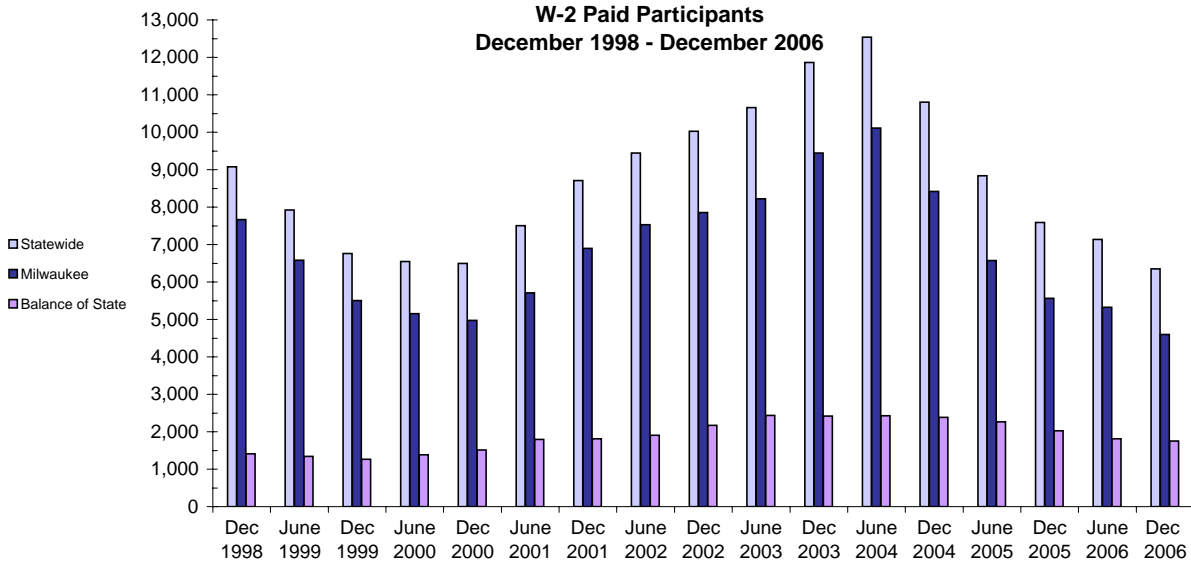
W-2 Transition (W-2T)..... A W-2 work-readiness practice placement for individuals who are unable to perform independent, self-sustaining work, but who are able to participate in work practice or other developmental activities and training up to their abilities.

Community Service Job (CSJ)..... A W-2 work-readiness practice placement designed to improve the employability of participants by providing work experience and training in the public and private sectors.

Trial Job (TJB)..... A W-2 subsidized employment position that provides work experience and training which may become permanent, unsubsidized employment. Paid directly to the employer.

Caretaker of Newborn (CMC)..... A custodial parent of a child who is 12 weeks old or less and who meets the financial and non-financial eligibility requirements for W-2 employment positions.

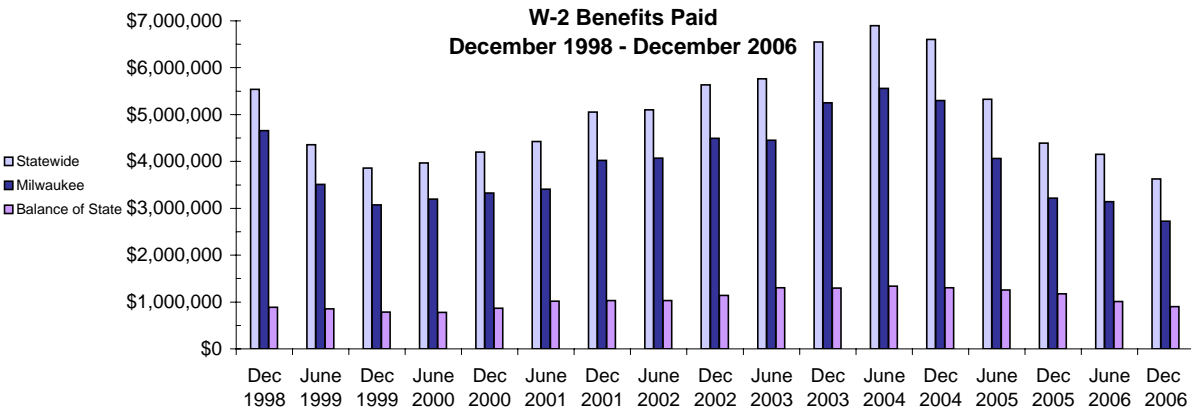
W-2 Paid Participants and Benefits Paid



W-2 Paid Participants - Most Recent Six Months

	Jan 2007	Feb 2007	Mar 2007	Apr 2007	May 2007	Jun 2007
Milwaukee County	4,540	4,408	4,367	4,278	4,339	4,452
Balance of State	1,792	1,715	1,680	1,671	1,705	1,705
Statewide	6,332	6,123	6,047	5,949	6,044	6,157

Source: CARES, Bureau of Workforce Information, Division of Workforce Solutions, Department of Workforce Development
 Note: The paid participants included in this count are participants who were in a paid placement during the report month.

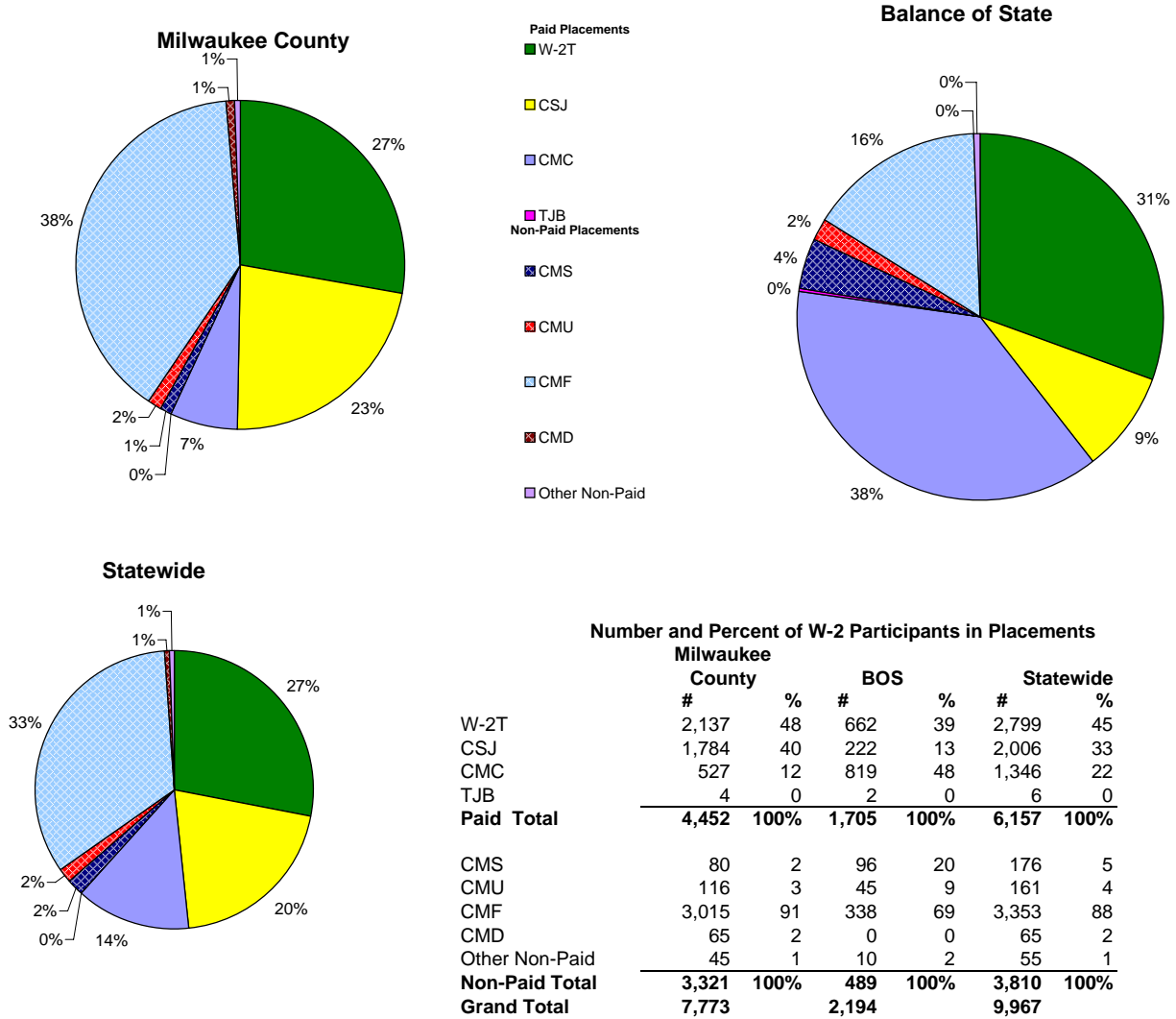


W-2 Benefits Paid - Most Recent Six Months

	Jan 2007	Feb 2007	Mar 2007	Apr 2007	May 2007	Jun 2007
Milwaukee County	\$2,723,409	\$2,689,914	\$2,527,338	\$2,533,432	\$2,489,111	\$2,441,615
Balance of State	\$925,952	\$951,736	\$910,001	\$893,371	\$901,853	\$888,161
Statewide	\$3,649,361	\$3,641,650	\$3,437,339	\$3,426,803	\$3,390,964	\$3,329,776

Source: CARES, Bureau of Workforce Information, Division of Workforce Solutions, Department of Workforce Development
 Note: The benefits paid are the total monthly net benefits after sanctions and recoupments are applied.

Placement of W-2 Participants, June 2007

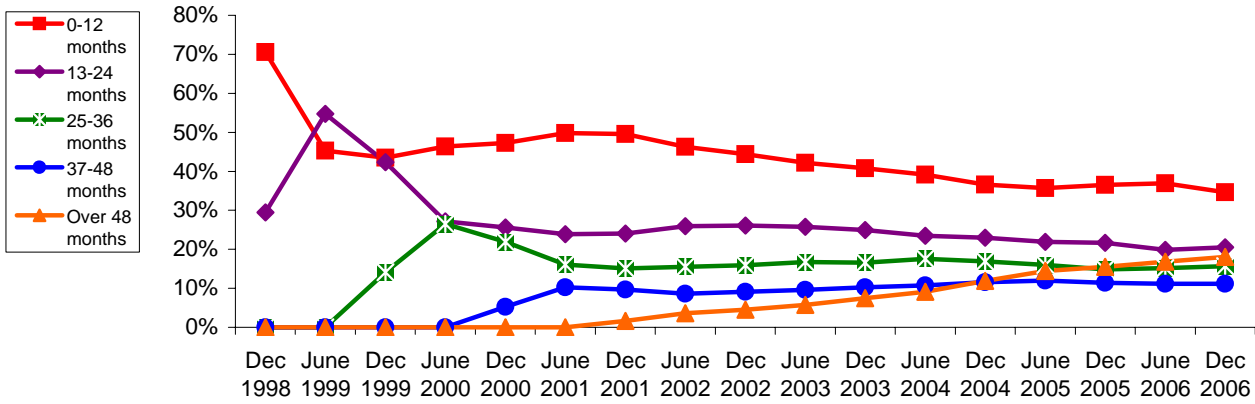


Source: CARES, Bureau of Workforce Information, Division of Workforce Solutions, Department of Workforce Development.

- Note: W-2 Transition (W-2T)..... A W-2 work-readiness practice placement for individuals who are unable to perform independent, self-sustaining work, but who are able to participate in work practice or other developmental activities and training up to their abilities.
- Community Service Job (CSJ)..... A W-2 work-readiness practice placement designed to improve the employability of participants by providing work experience and training in the public and private sectors.
- Trial Job (TJB)..... A W-2 subsidized employment position that provides work experience and training which may become permanent, unsubsidized employment. Subsidy is paid directly to the employer.
- Case Mgmt - Caretaker of a Newborn (CMC)..... A custodial parent of a child who is 12 weeks old or less and who meets the financial and non-financial eligibility requirements for W-2 employment positions.
- Case Mgmt - Pregnancy (CMP)..... A participant with a medically verified pregnancy.
- Case Mgmt - Service for Job Ready (CMS)..... Used for case management services for unemployed individuals who have been assessed as having the capability of obtaining immediate full-time employment.
- Case Mgmt - Follow - Up (CMF)..... Used for Placement for Individuals who move from a W-2 benefit Placement to unsubsidized employment.
- Case Mgmt- Denied Extension (CMD)..... Participants who exhausted time-limited benefits but are receiving services.
- Case Mgmt - Service for Working (CMU)..... Used for individuals working in unsubsidized employment who are without barriers to full-time employment.
- Case Mgmt - Non-Custodial Parent (CMN)..... Used for case management services for non-custodial parents.
- Case Mgmt - Minor Parent (CMM)..... Used for case management services for a custodial minor parent.

Number of Months Served in W-2 *

Percentage Distribution- Statewide
December 1998- December 2006

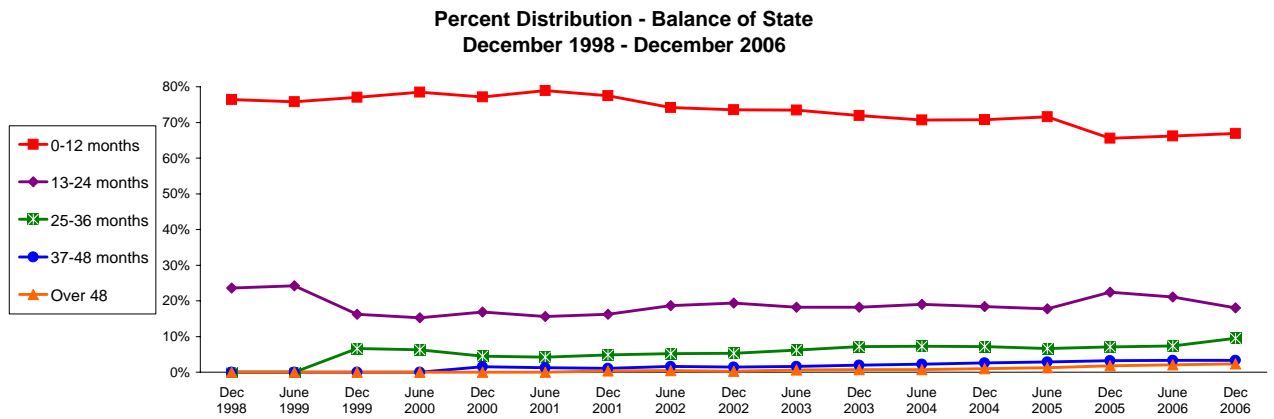
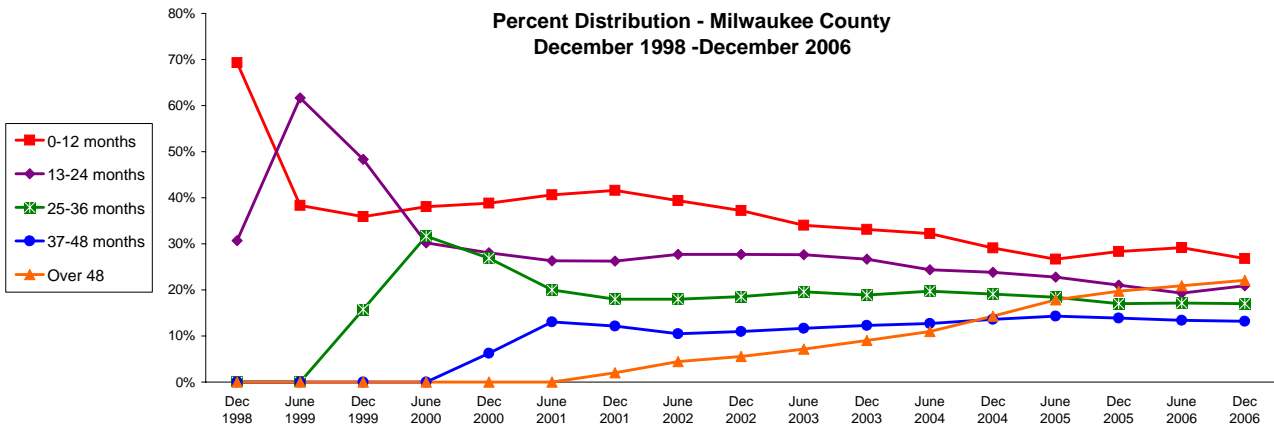


Source: CARES, Bureau of Workforce Information, Division of Workforce Solutions, Department of Workforce Development.
* Note: Length of stay is determined for the W-2 participants in the report month by the number of total months a participant has been in W-2 since the beginning of the program.

Number of Months Served in W-2 - Most Recent Six Months

	Months	Jan 2007	Feb 2007	Mar 2007	Apr 2007	May 2007	Jun 2007
Milwaukee County	0-12	2,115	2,033	1,989	1,979	2,031	2,053
	13-24	1,666	1,632	1,704	1,664	1,689	1,694
	25-36	1,357	1,301	1,271	1,231	1,214	1,220
	37-48	1,056	1,050	1,065	1,030	1,044	1,033
	Over 48	1,792	1,829	1,870	1,851	1,879	1,855
Balance of State	0-12	1,682	1,576	1,559	1,549	1,583	1,586
	13-24	429	442	437	437	425	417
	25-36	236	233	215	214	209	218
	37-48	79	73	71	70	72	71
	Over 48	56	58	59	58	65	60
Statewide	0-12	3,543	3,362	3,305	3,295	3,378	3,410
	13-24	2,066	2,039	2,116	1,073	2,085	2,083
	25-36	1,594	1,539	1,484	1,439	1,417	1,429
	37-48	1,141	1,126	1,144	1,108	1,128	1,112
	Over 48	1,867	1,904	1,943	1,924	1,958	1,933

Number of Months Served in W-2* , Continued

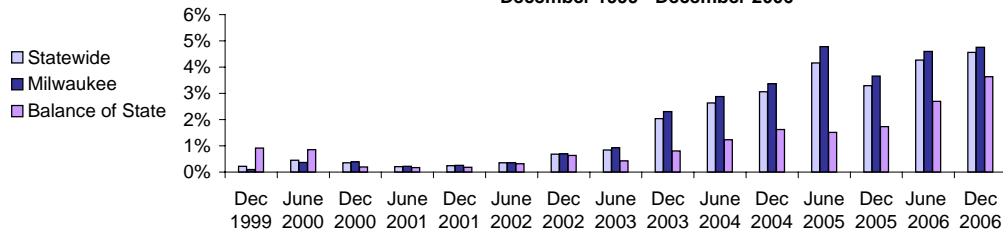


Source: CARES, Bureau of Workforce Information, Division of Workforce Solutions, Department of Workforce Development.

* Length of stay is determined for the W-2 participants in the report month by the number of total months a participant has been in W-2 since the beginning of the program. Participants may be counted more than once if their geographic location changes from Milwaukee to Balance of State or vice versa.

Extensions Granted for 24 - Month Clocks*

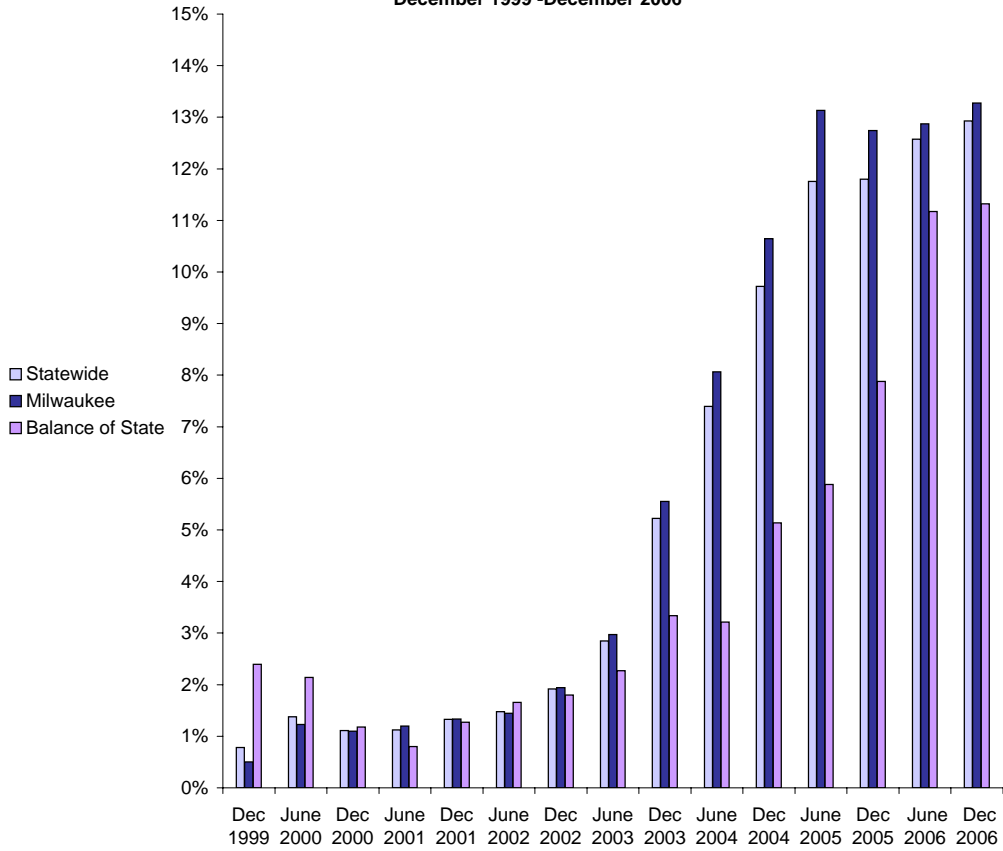
**Percent of W-2T & CSJ Participants with Beginning Extensions
December 1999 - December 2006**



Number of Beginning Extensions - Most Recent Six Months

	Jan 2007	Feb 2007	Mar 2007	Apr 2007	May 2007	Jun 2007
Milwaukee County	139	153	183	139	165	167
Balance of State	29	20	23	23	24	27
Statewide	168	173	206	162	189	194

**Percent of W-2T & CSJ Participants with Ongoing Extensions
December 1999 - December 2006**



Number of Ongoing Extensions - Most Recent Six Months

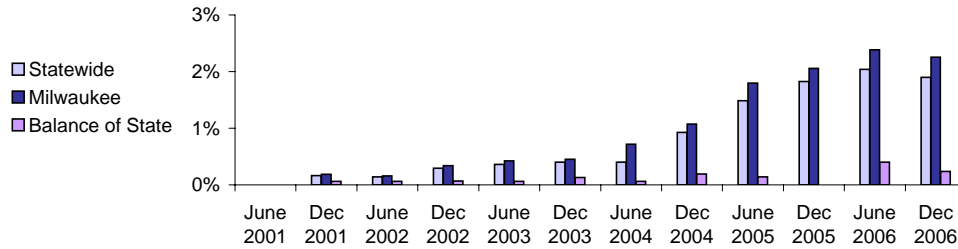
	Jan 2007	Feb 2007	Mar 2007	Apr 2007	May 2007	Jun 2007
Milwaukee County	489	463	466	436	430	438
Balance of State	82	82	80	86	78	90
Statewide	571	545	546	522	508	528

Source: CARES, Bureau of Workforce Information, Division of Workforce Solutions, Department of Workforce Development.

* Extensions can be granted after 24 months of participation in a W-2T or CSJ placement. Extensions are granted when the participant is nearing the 24th month of their placement clock and they qualify for extended eligibility by meeting specific required criteria. Participants may be counted more than once if the participant's extension lasts longer than six months. Ongoing extensions are an end of the month count.

Extensions Granted for 60- Month Clocks*

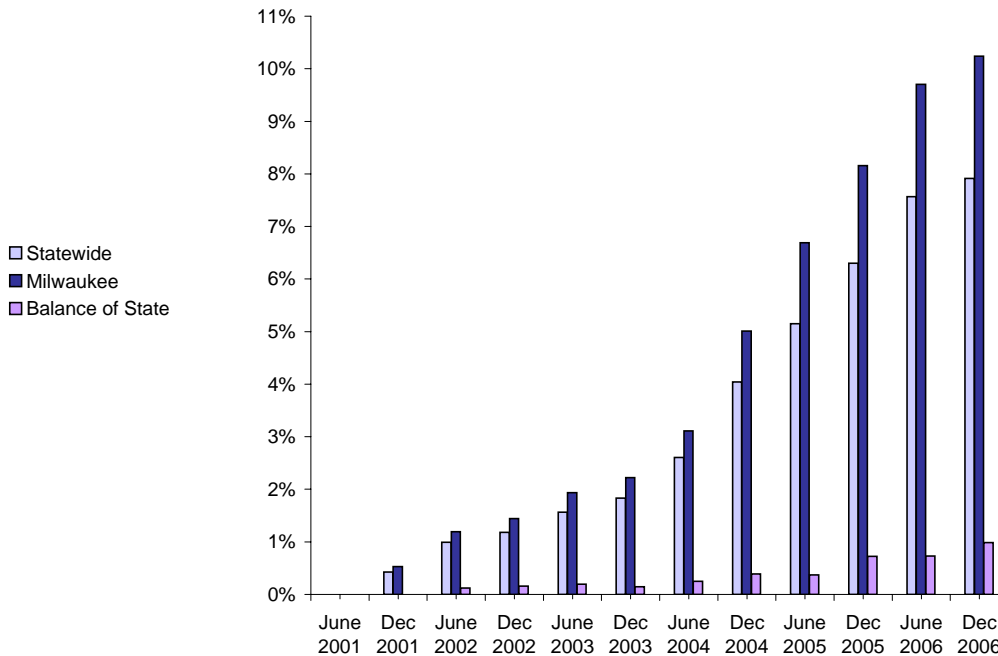
**Percent of Participants with Beginning Extensions
June 2001 - December 2006**



Number of Beginning Extensions - Most Recent Six Months

	Jan 2007	Feb 2007	Mar 2007	Apr 2007	May 2007	Jun 2007
Milwaukee County	95	108	94	102	101	110
Balance of State	2	3	9	4	4	5
Statewide	97	111	103	106	105	115

**Percent of Participants with Ongoing Extensions
June 2001 - December 2006**



Number of Ongoing Extensions - Most Recent Six Months

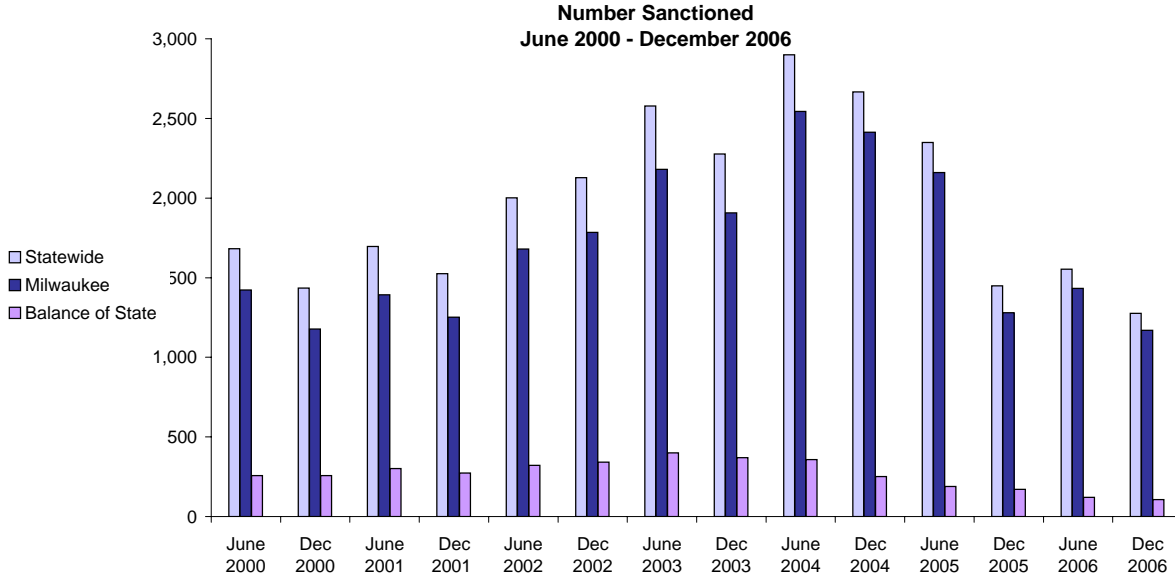
	Jan 2007	Feb 2007	Mar 2007	Apr 2007	May 2007	Jun 2007
Milwaukee County	409	441	433	419	430	443
Balance of State	15	15	18	19	22	19
Statewide	424	456	451	438	452	462

Source: CARES, Bureau of Workforce Information, Division of Workforce Solutions, Department of Workforce Development.

Note: Extensions can be granted after 60 months of lifetime participation. Extensions are granted when the participant is nearing the 60th month of their lifetime clock and they qualify for extended eligibility by meeting specific required criteria. The 60- month extensions first became relevant as of September 2001.

* Participants may be counted more than once if the participant's extension lasts longer than six months. Ongoing Extensions are an end of the month count.

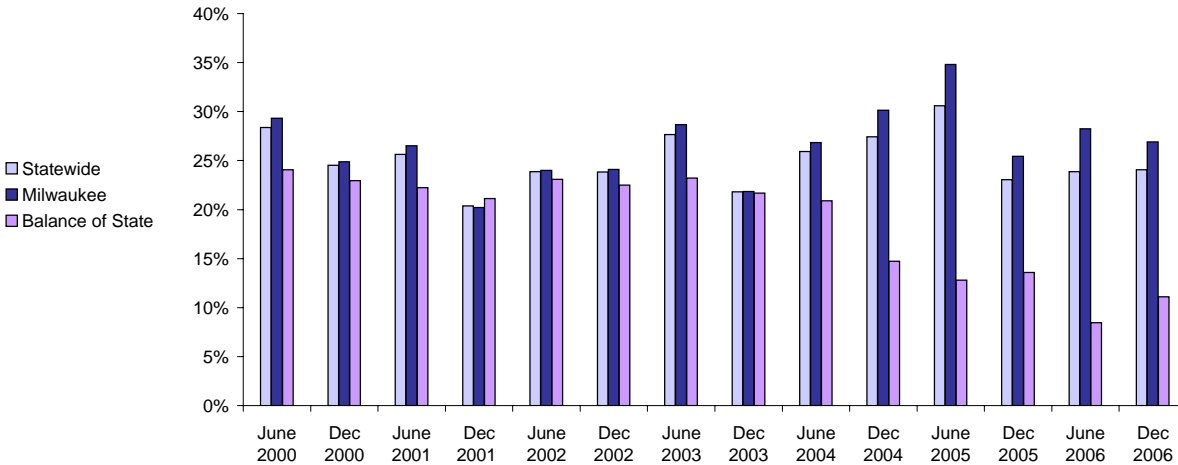
W-2T and CSJ Participants Who Were Sanctioned



Number Sanctioned - Most Recent Six Months

	Jan 2007	Feb 2007	Mar 2007	Apr 2007	May 2007	Jun 2007
Milwaukee County	1,102	1,172	1,107	1,014	1,081	1,106
Balance of State	100	107	80	93	111	115
Statewide	1,202	1,279	1,187	1,107	1,192	1,221

Percent Sanctioned June 2000 - December 2006



Percent Sanctioned - Most Recent Six Months

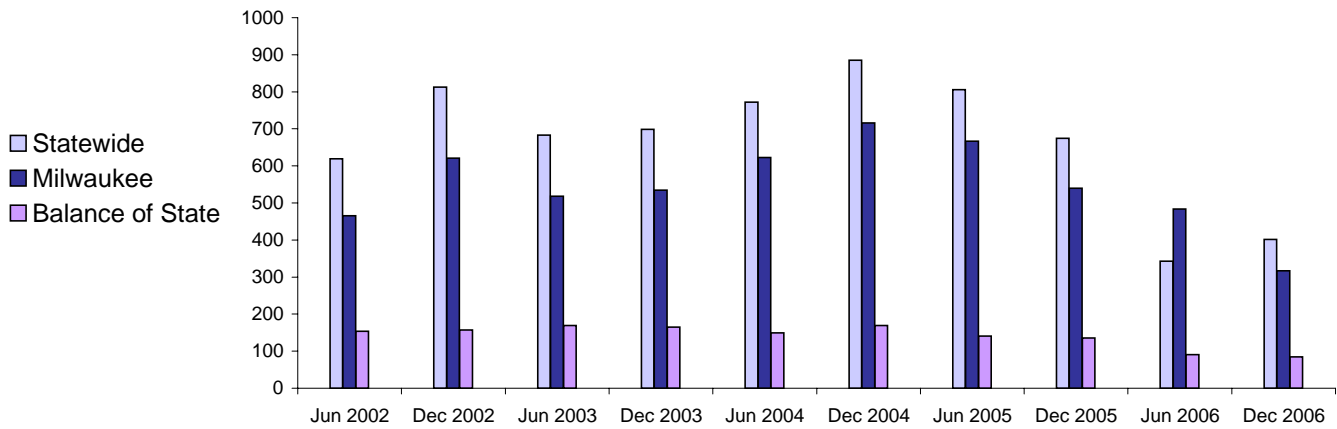
	Jan 2007	Feb 2007	Mar 2007	Apr 2007	May 2007	Jun 2007
Milwaukee County	26%	28%	25%	23%	27%	27%
Balance of State	11%	12%	12%	16%	12%	12%
Statewide	23%	25%	24%	22%	24%	24%

Source: CARES, Bureau of Workforce Information, Division of Workforce Solutions, Department of Workforce Development.

Note: Because sanction counts prior to September 1999 were counted differently they are not included in these graphs. The graphs on this page report information on the sanctionable population (W-2T and CSJ placements only). The data represented here are point in time during a month.

Entered Employments of W-2 Participants

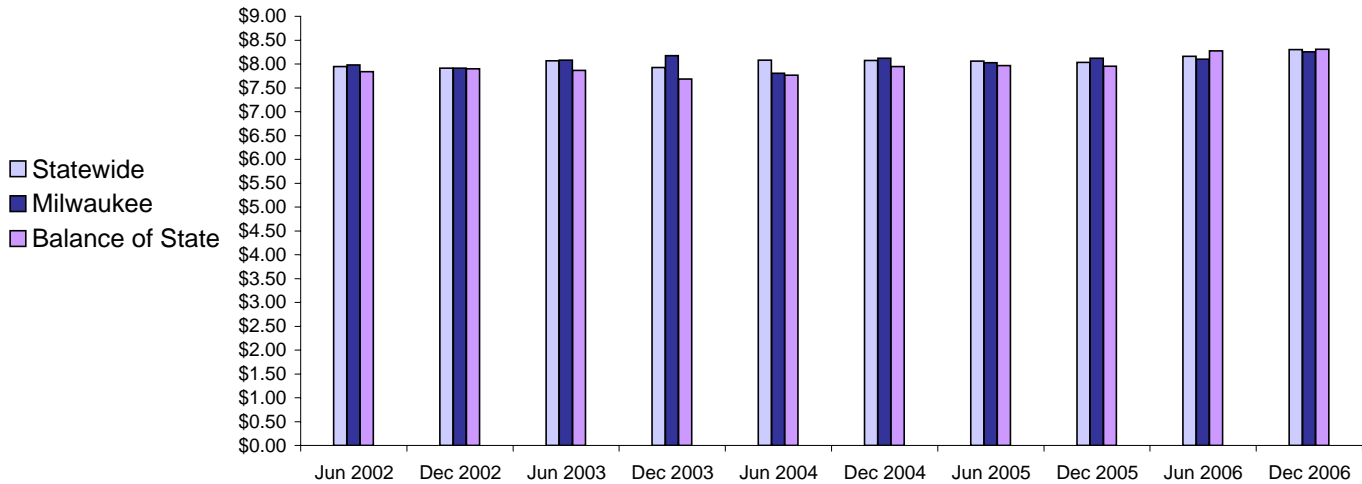
Six Month Average Number Entered Employment*
June 2002-December 2006



Total Number Of Entered Employments - Most Recent Six Months

	Jan 2007	Feb 2007	Mar 2007	Apr 2007	May 2007	Jun 2007
Milwaukee County	292	226	290	252	240	204
Balance of State	75	62	68	70	79	76
Statewide	367	288	358	322	319	280

Six Month Average Hourly Wage*
June 2002 - December 2006



Average Hourly Wage - Most Recent Six Months

	Jan 2007	Feb 2007	Mar 2007	Apr 2007	May 2007	Jun 2007
Milwaukee County	\$8.61	\$8.50	\$8.42	\$8.30	\$8.35	\$8.32
Balance of State	\$8.88	\$8.62	\$8.69	\$8.36	\$8.06	\$8.19
Statewide	\$8.66	\$8.53	\$8.47	\$8.32	\$8.28	\$8.29

Source: CARES, Bureau of Workforce Information, Division of Workforce Solutions, Department of Workforce Development.

Note: Entered Employment is a W-2 program performance measure counted when a participant obtains or increases wages in a new job.

Entered Employment of less than 30 days are excluded. Wage data are reported for jobs with hourly wages

*Average number entered employment per month for the six month period ending in June or December.