

Wisconsin W-2 Participants in Paid Placements*

Number of Participants in Paid Placements					
	One Year Ago	Last Month	This Month	Change in Most Recent Two Months	
	Nov 2005	Oct 2006	Nov 2006	Number	Percent
Paid Participants:					
Milwaukee County	5,692	4,865	4,743	-122	-2.5%
Balance of State	2,103	1,749	1,757	8	0.5%
Statewide Caseload	7,795	6,614	6,500	-114	-1.7%
Milwaukee County Regions:					
Milwaukee NE YWCA	769	640	566	-74	-11.6%
Milwaukee SE UMOS	785	725	711	-14	-1.9%
Milwaukee Central UMOS	1,474	1,292	1,267	-25	-1.9%
Milwaukee NW MAXIMUS	1,497	1,097	1,096	-1	-0.1%
Milwaukee SW MAXIMUS	1,161	788	772	-16	-2.0%
Milwaukee SSI-Adv UMOS	0	322	330	8	2.5%
Milwaukee County Total*:	5,692	4,865	4,743	-122	-2.5%

Source: CARES, Bureau of Workforce Information, Division of Workforce Solutions, Department of Workforce Development.

* Milwaukee County total includes a small number of cases served by Milwaukee County Department of Social Services.

Note: The paid caseload includes the following categories of placements:

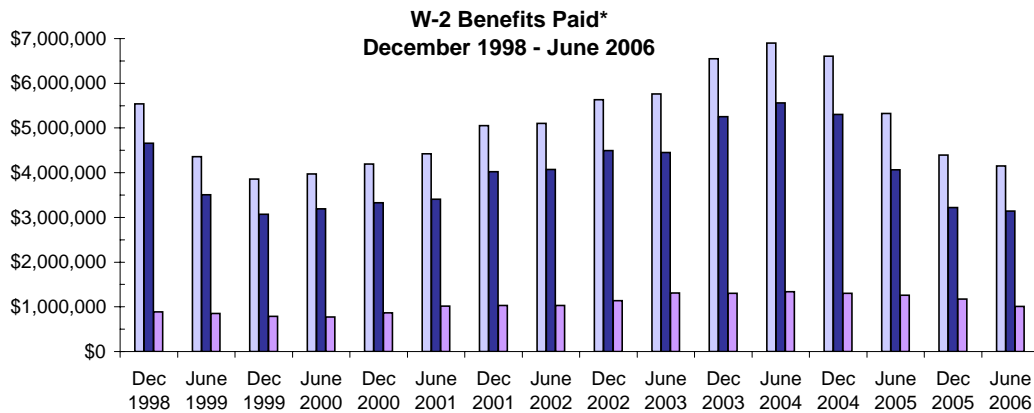
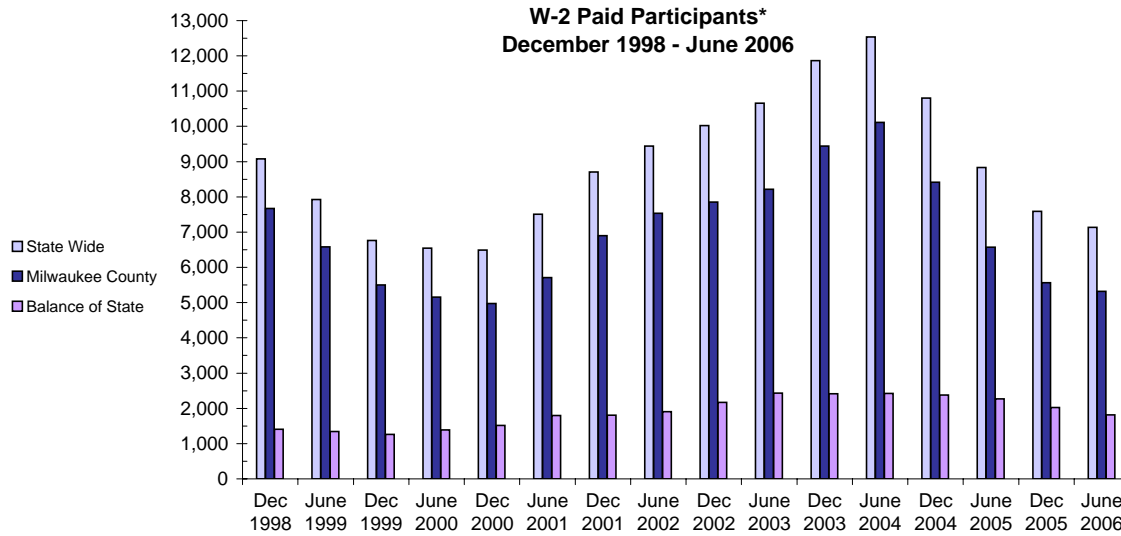
W-2 Transition (W-2T)..... A W-2 work-readiness practice placement for individuals who are unable to perform independent, self-sustaining work, but who are able to participate in work practice or other developmental activities and training up to their abilities.

Community Service Job (CSJ)..... A W-2 work-readiness practice placement designed to improve the employability of participants by providing work experience and training in the public and private sectors.

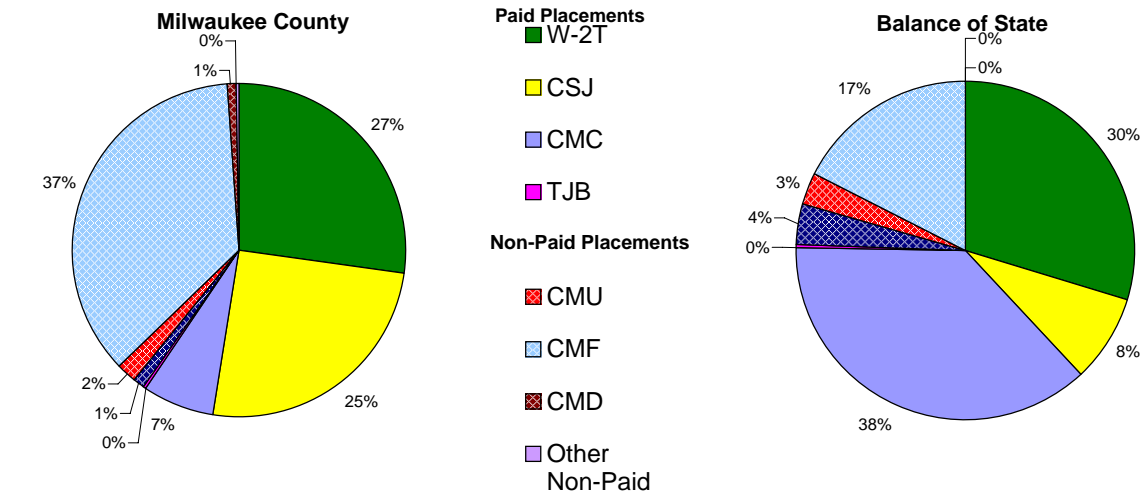
Trial Job (TJB)..... A W-2 subsidized employment position that provides work experience and training which may become permanent, unsubsidized employment. Paid directly to the employer.

Caretaker of Newborn (CMC)..... A custodial parent of a child who is 12 weeks old or less and who meets the financial and non-financial eligibility requirements for W-2 employment positions.

W-2 Paid Participants and Benefits Paid



Placement of W-2 Participants, November 2006



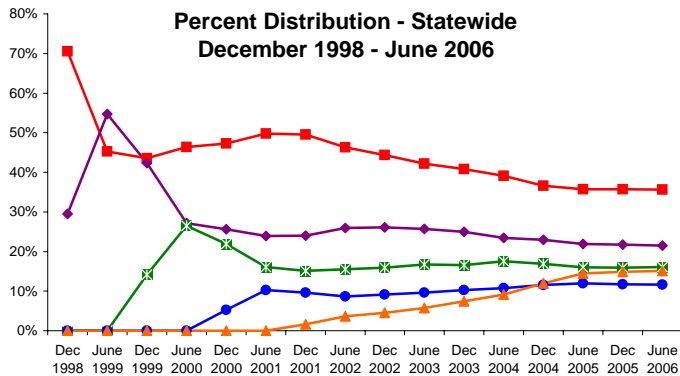
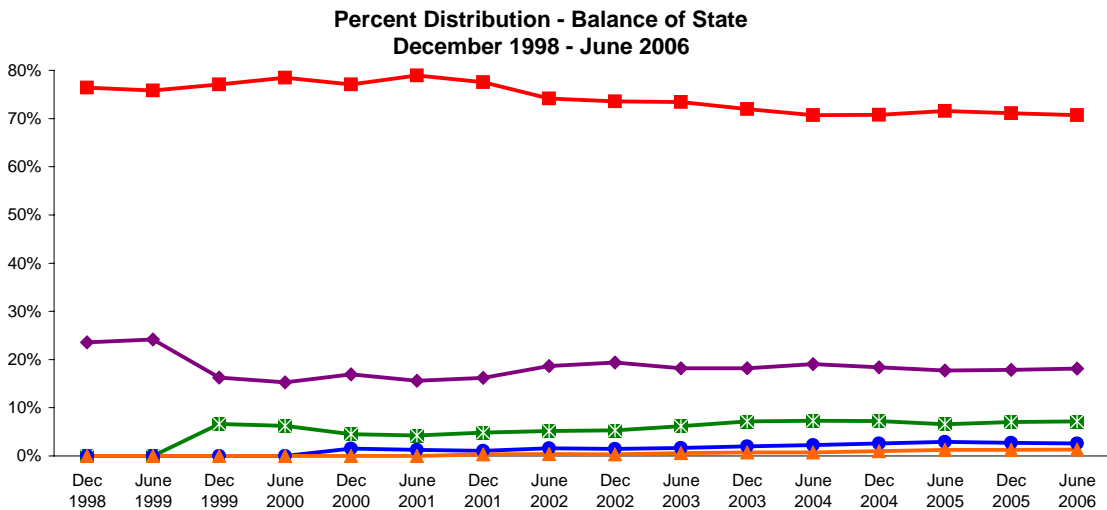
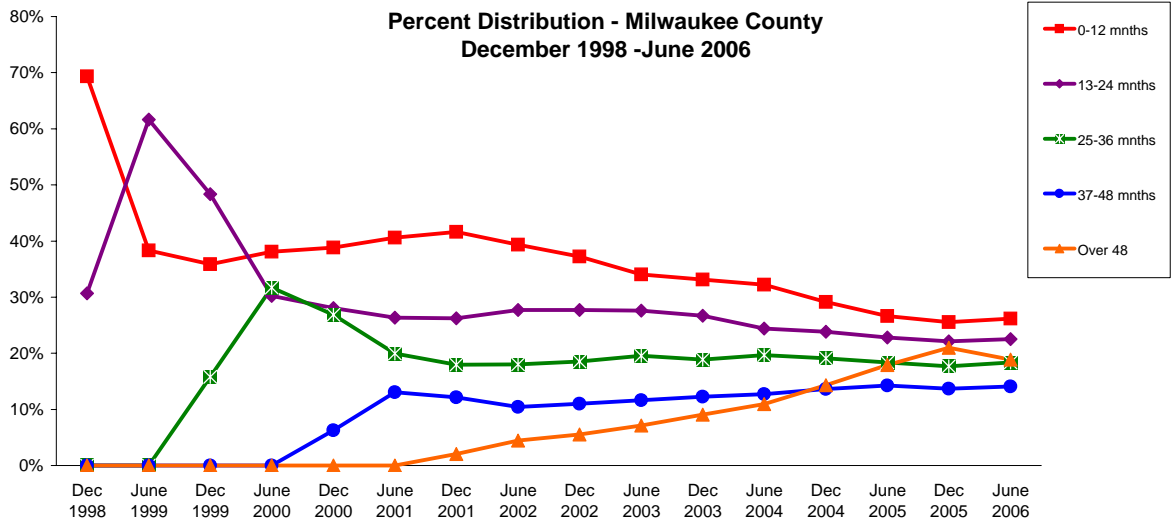
Number and Percent of W-2 Participants in Placements

	Milwaukee County		BOS		Statewide	
	#	%	#	%	#	%
W-2T	2,139	46%	675	39%	2,814	43%
CSJ	1,996	42	191	11	2,263	35
CMC	555	12	851	49	1,406	22
TJB	11	0	6	0	17	0
Paid Total	4,701	60%	1,723	76%	6,500	64%
CMS	95	3	91	16	186	5
CMU	154	5	70	13	224	6
CMF	2,835	89	393	71	3,228	86
CMD	67	1	0	0	67	1
Other Non-Paid	25	1	3	1	28	1
Non-Paid Total	3,176	40%	557	24%	3,733	36%
Grand Total	7,877		2,280		10,233	

Source: CARES, Bureau of Workforce Information, Division of Workforce Solutions, Department of Workforce Development.

- * Note: W-2 Transition (W-2T)..... A W-2 work-readiness practice placement for individuals who are unable to perform independent, self-sustaining work, but who are able to participate in work practice or other developmental activities and training up to their abilities.
- Community Service Job (CSJ)..... A W-2 work-readiness practice placement designed to improve the employability of participants by providing work experience and training in the public and private sectors.
- Trial Job (TJB)..... A W-2 subsidized employment position that provides work experience and training which may become permanent, unsubsidized employment. Paid directly to the employer.
- Case Mgmt - Caretaker of a Newborn (CMC)..... A custodial parent of a child who is 12 weeks old or less and who meets the financial and non-financial eligibility requirements for W-2 employment positions.
- Case Mgmt - Pregnancy (CMP)..... A participant with a medically verified pregnancy.
- Case Mgmt - Service for Job Ready (CMS)..... Used for case management services for unemployed individuals who have been assessed as having the capability of obtaining immediate full-time employment.
- Case Mgmt - Service for Job Ready (CMS).... Used for case management services for unemployed individuals who have been assessed as having the capability of obtaining immediate full-time employment.
- Case Mgmt- Denied Extension (CMD)..... Job ready participants denied an extension of time-limited benefits.
- Case Mgmt - Service for Working (CMU)..... Used for individuals working in unsubsidized employment who are without barriers to full-time employment.
- Case Mgmt - Non-Custodial Parent (CMN)..... Used for case management services for non-custodial parents.
- Case Mgmt - Minor Parent (CMM)..... Used for case management services for a custodial minor parent.

Number of Months Served in W-2*



Number of Months Served in W-2 - Most Recent Six Months

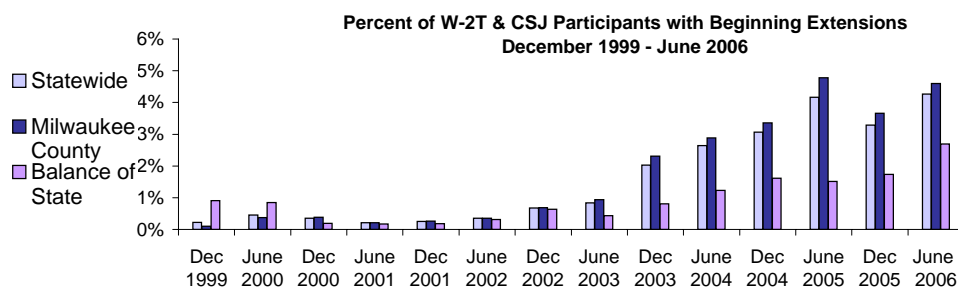
	Months	Jun 2006	Jul 2006	Aug 2006	Sep 2006	Oct 2006	Nov 2006
Milwaukee County	0-12	2273	2251	2271	2233	2185	2217
	13-24	1504	1526	1559	1591	1664	1653
	25-36	1338	1357	1371	1357	1370	1363
	37-48	1043	1065	1093	1095	1087	1082
	Over 48	1628	1658	1678	1695	1723	1704
Balance of State	0-12	1711	1683	1716	1616	1642	1655
	13-24	545	544	523	509	475	462
	25-36	190	194	204	225	220	222
	37-48	85	86	83	77	77	83
	Over 48	54	55	54	54	53	52
Statewide	0-12	3734	3682	3726	3602	3582	3614
	13-24	2009	2043	2057	2070	2107	2090
	25-36	1536	1550	1567	1578	1590	1588
	37-48	1131	1155	1181	1181	1172	1167
	Over 48	1699	1733	1755	1767	1795	1774

Source: CARES, Bureau of Workforce Information, Division of Workforce Solutions, Department of Workforce Development.

*Note: Length of stay is determined for the W-2 participants in the report month by the number of total months a participant has been in W-2 since the beginning of the program.

*Note: Participants may be counted more than once if their geographic location changes from Milwaukee to Balance of State or vice versa.

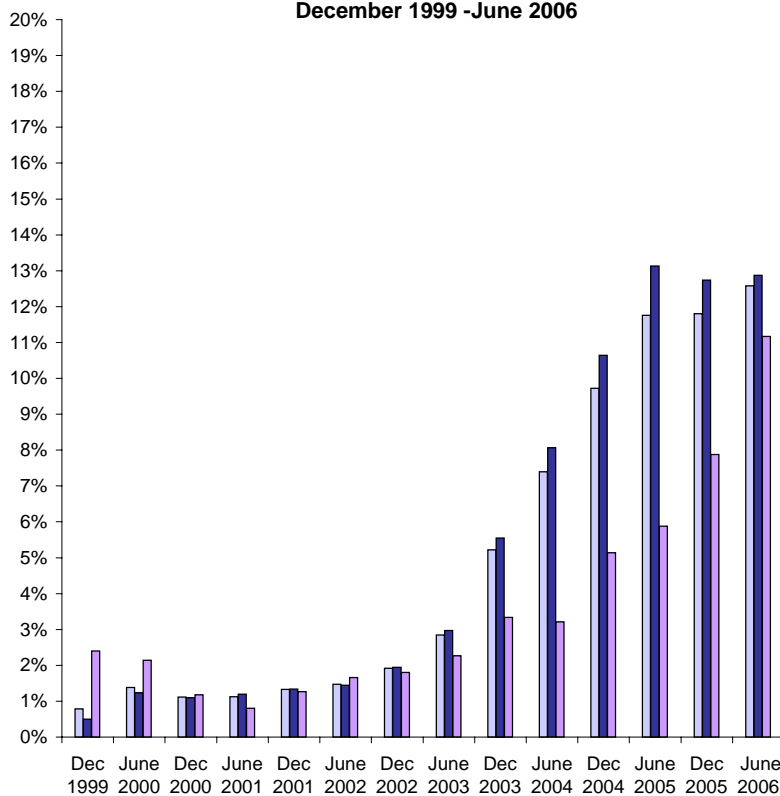
Extensions Granted for 24 Month Clocks*



Number of Beginning Extensions - Most Recent Six Months

	Jun 2006	Jul 2006	Aug 2006	Sep 2006	Oct 2006	Nov 2006
Milwaukee County	218	193	189	198	187	179
Balance of State	27	29	36	26	26	24
Statewide	245	222	225	224	213	203

Percent of W-2T & CSJ Participants with Ongoing Extensions December 1999 - June 2006



Number of Ongoing Extensions - Most Recent Six Months

	June 2006	July 2006	Aug 2006	Sep 2006	Oct 2006	Nov 2006
Milwaukee County	562	564	549	517	486	483
Balance of State	103	90	98	94	85	86
Statewide	665	654	647	611	571	569

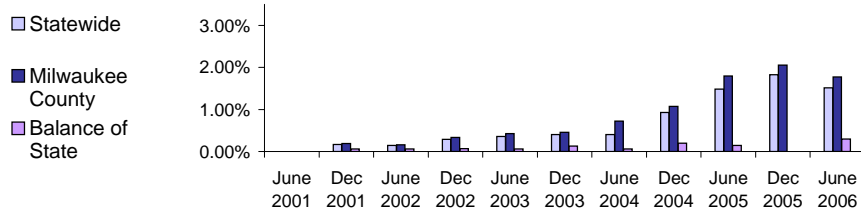
Source: CARES, Bureau of Workforce Information, Division of Workforce Solutions, Department of Workforce Development.

*Note: Extensions can be granted after 24 months of participation in a W-2T or CSJ placement. Extensions are granted when the participant is nearing the 24th month of their placement clock and they qualify for extended eligibility by meeting specific required criteria.

*Note: Participants may be counted more than once if the participant's extension lasts longer than six months. Ongoing Extensions are an end of the month count.

Extensions Granted for 60 Month Clocks*

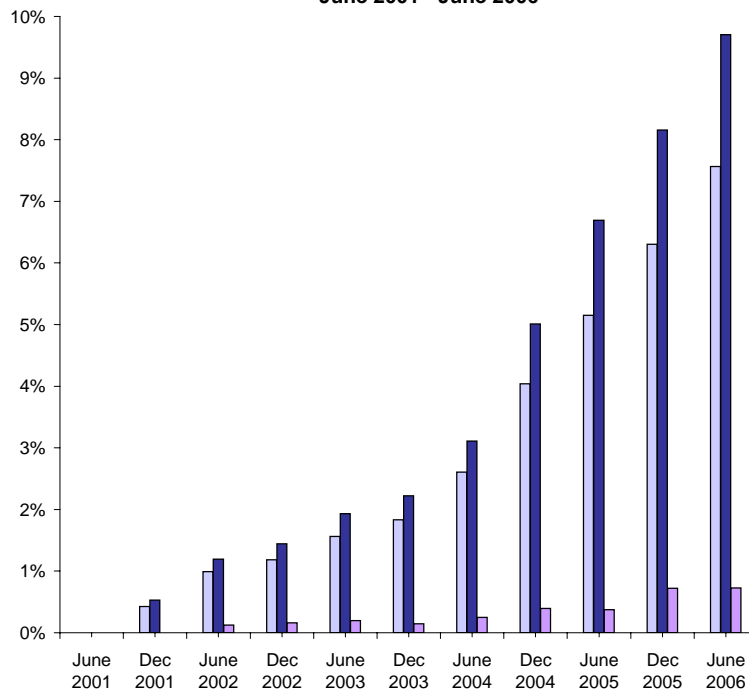
Percent of Participants with Beginning Extensions June 2001 - June 2006



Number of Beginning Extensions - Most Recent Six Months

	Jun 2006	Jul 2006	Aug 2006	Sep 2006	Oct 2006	Nov 2006
Milwaukee County	113	113	109	112	89	107
Balance of State	4	2	5	3	7	4
Statewide	117	115	114	115	96	111

Percent of Participants with Ongoing Extensions June 2001 - June 2006



Number of Ongoing Extensions - Most Recent Six Months

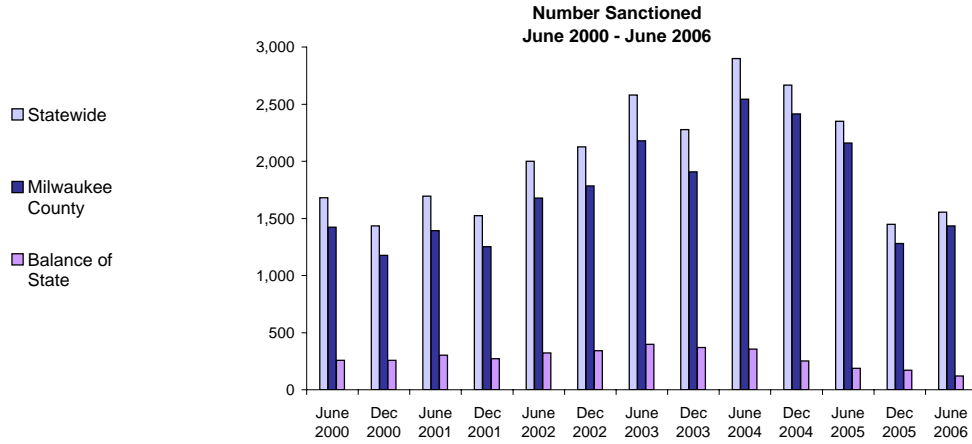
	Jun 2006	Jul 2006	Aug 2006	Sep 2006	Oct 2006	Nov 2006
Milwaukee County	469	458	446	462	426	433
Balance of State	11	11	13	11	16	10
Statewide	480	469	459	473	442	443

Source: CARES, Bureau of Workforce Information, Division of Workforce Solutions, Department of Workforce Development.

*Note: Extensions can be granted after 60 months of lifetime participation. Extensions are granted when the participant is nearing the 60th month of their lifetime clock and they qualify for extended eligibility by meeting specific required criteria. The 60 month extensions first became relevant as of September 2001.

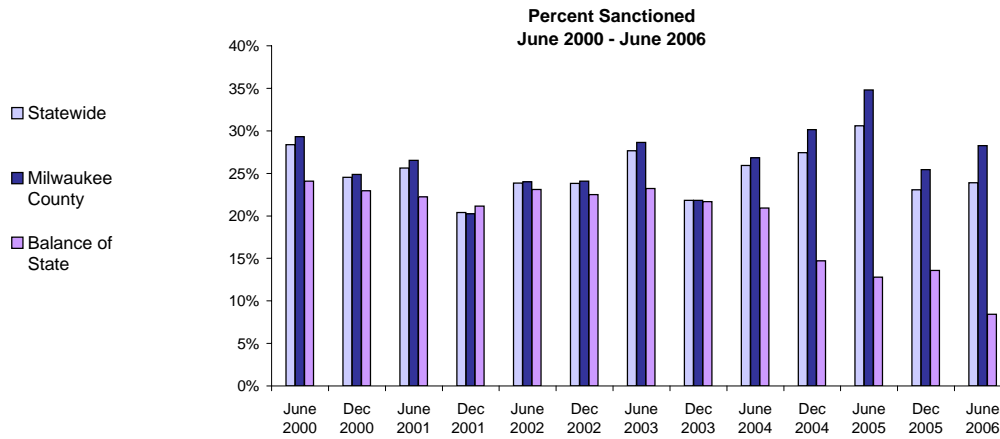
*Note: Participants may be counted more than once if the participant's extension lasts longer than six months. Ongoing Extensions are an end of the month count.

W-2T and CSJ Participants Who Were Sanctioned*



Number Sanctioned - Most Recent Six Months

	Jun 2006	Jul 2006	Aug 2006	Sep 2006	Oct 2006	Nov 2006
Milwaukee County	1,433	1,375	1,525	1,360	1,237	1,182
Balance of State	121	145	134	136	126	111
Statewide	1,554	1,520	1,659	1,496	1,363	1,293



Percent Sanctioned - Most Recent Six Months

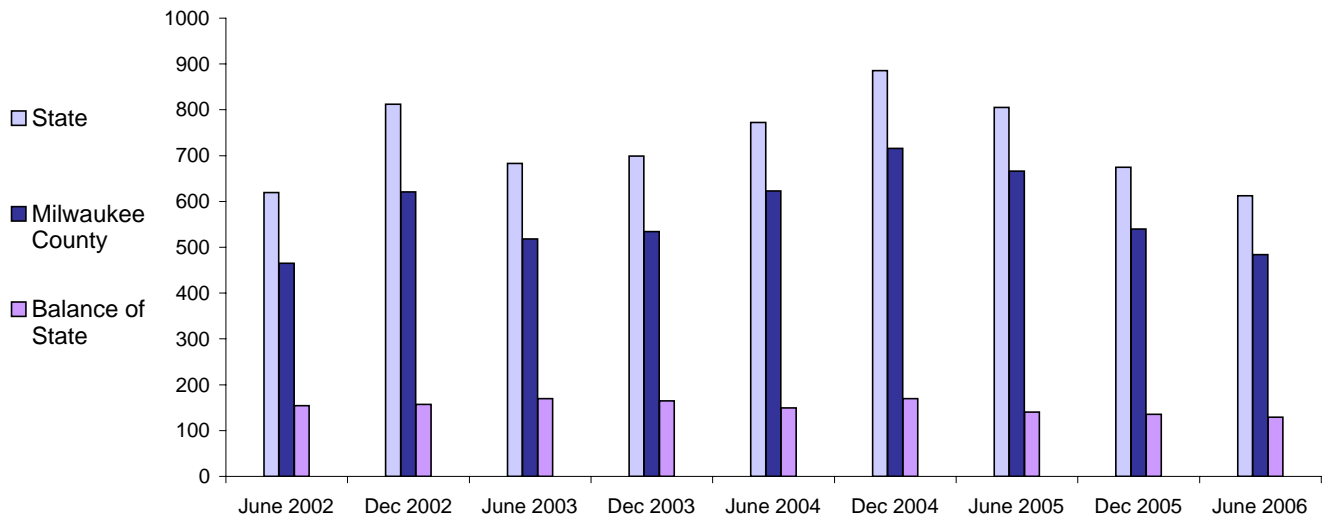
	Jun 2006	Jul 2006	Aug 2006	Sep 2006	Oct 2006	Nov 2006
Milwaukee County	28%	27%	30%	28%	27%	26%
Balance of State	11%	13%	11%	12%	12%	10%
Statewide	25%	24%	27%	25%	24%	23%

Source: CARES, Bureau of Workforce Information, Division of Workforce Solutions, Department of Workforce Development.

* Note: Because sanction counts prior to September 1999 were counted differently they are not included in these graphs. The graphs on this page report information on the sanctionable population (W-2T and CSJ placements only). The data represented here are point in time during a month.

W-2 Participants Entered Employment

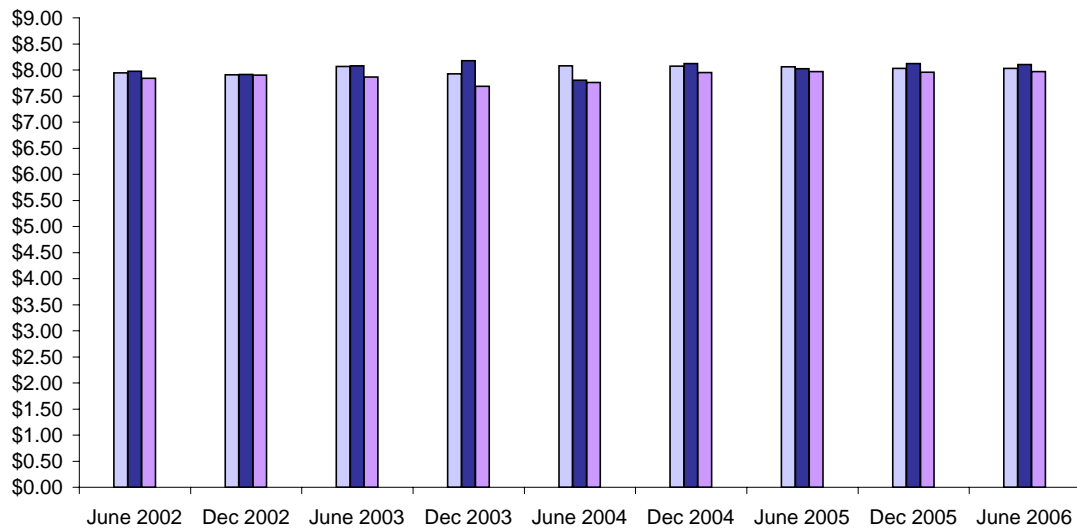
Average Number Entered Employment* June 2002-June 2006



Total Number Entered Employment - Most Recent Six Months

	Jun 2006	Jul 2006	Aug 2006	Sep 2006	Oct 2006	Nov 2006
Milwaukee County	332	284	371	351	368	277
Balance of State	81	81	89	92	95	94
Statewide	413	365	460	443	463	371

Average Hourly Wage* June 2002 - June 2006



Average Hourly Wage - Most Recent Six Months

	Jun 2006	Jul 2006	Aug 2006	Sep 2006	Oct 2006	Nov 2006
Milwaukee County	\$ 8.09	\$ 8.31	\$ 8.15	\$ 8.21	\$ 8.28	\$ 8.19
Balance of State	\$ 8.46	\$ 7.90	\$ 8.17	\$ 8.17	\$ 8.58	\$ 8.60
Statewide	\$ 8.16	\$ 8.21	\$ 8.15	\$ 8.41	\$ 8.34	\$ 8.19

Source: CARES, Bureau of Workforce Information, Division of Workforce Solutions, Department of Workforce Development.

* Note: Entered Employment is a W-2 program performance measure counted when a participant obtains or increases wages in a new job. Entered Employment for less than 30 days are excluded. Wage data are for jobs with hourly wages.