

Wisconsin W-2 Participants in Paid Placements*

Number of Participants in Paid Placements					
	One Year Ago	Last Month	This Month	Change in Most Recent Two Months	
	Sep 2005	Aug 2006	Sep 2006	Number	Percent
Paid Participants:					
Milwaukee County	5,760	5,153	4,985	-168	-3.3%
Balance of State	2,122	1,807	1,716	-91	-5.0%
Statewide Caseload	7,882	6,960	6,701	-259	-3.7%
Milwaukee County Regions:	Sep 2005	Aug 2006	Sep 2006	Number	Percent
Milwaukee NE YWCA	771	646	641	-5	-0.8%
Milwaukee SE UMOS	754	722	753	31	4.3%
Milwaukee Central UMOS	1,500	1,379	1,346	-33	-2.4%
Milwaukee NW MAXIMUS	1,576	1,239	1,137	-102	-8.2%
Milwaukee SW MAXIMUS	1,155	856	795	-61	-7.1%
Milwaukee SSI-Adv UMOS	0	311	310	-1	-0.3%
Milwaukee County Total*:	5,760	5,153	4,985	-168	-3.3%

Source: CARES, Bureau of Workforce Information, Division of Workforce Solutions, Department of Workforce Development.

* Milwaukee County total includes a small number of cases served by Milwaukee County Department of Social Services.

Note: The paid caseload includes the following categories of placements:

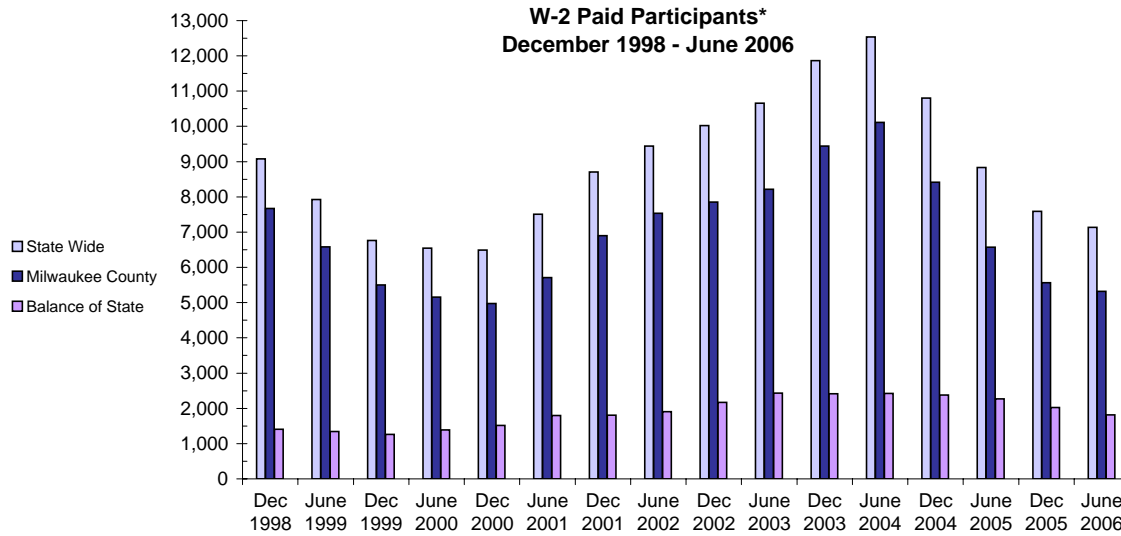
W-2 Transition (W-2T)..... A W-2 work-readiness practice placement for individuals who are unable to perform independent, self-sustaining work, but who are able to participate in work practice or other developmental activities and training up to their abilities.

Community Service Job (CSJ)..... A W-2 work-readiness practice placement designed to improve the employability of participants by providing work experience and training in the public and private sectors.

Trial Job (TJB)..... A W-2 subsidized employment position that provides work experience and training which may become permanent, unsubsidized employment. Paid directly to the employer.

Case Mgmt- Caretaker of Newborn (CMA custodial parent of a child who is 12 weeks old or less and who meets the financial and non-financial eligibility requirements for W-2 employment positions.

W-2 Paid Participants and Benefits Paid

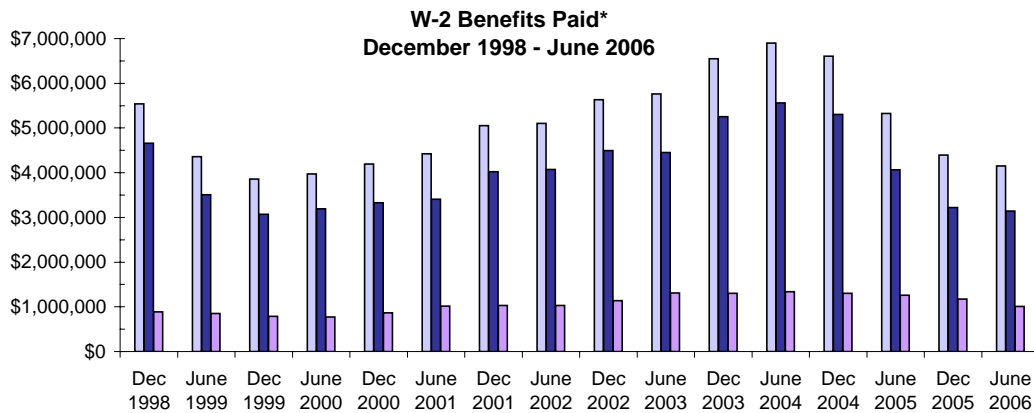


W-2 Paid Participants - Most Recent Six Months

	Apr 2006	May 2006	Jun 2006	Jul 2006	Aug 2006	Sep 2006
Milwaukee County	5,400	5,396	5,324	5,252	5,153	4,985
Balance of State	1,830	1,833	1,814	1,803	1,807	1,716
Statewide	7,230	7,229	7,138	7,055	6,960	6,701

Source: CARES, Bureau of Workforce Information, Division of Workforce Solutions, Department of Workforce Development

*Note: The paid participants included in this count are participants who were in a paid placement during the report month.



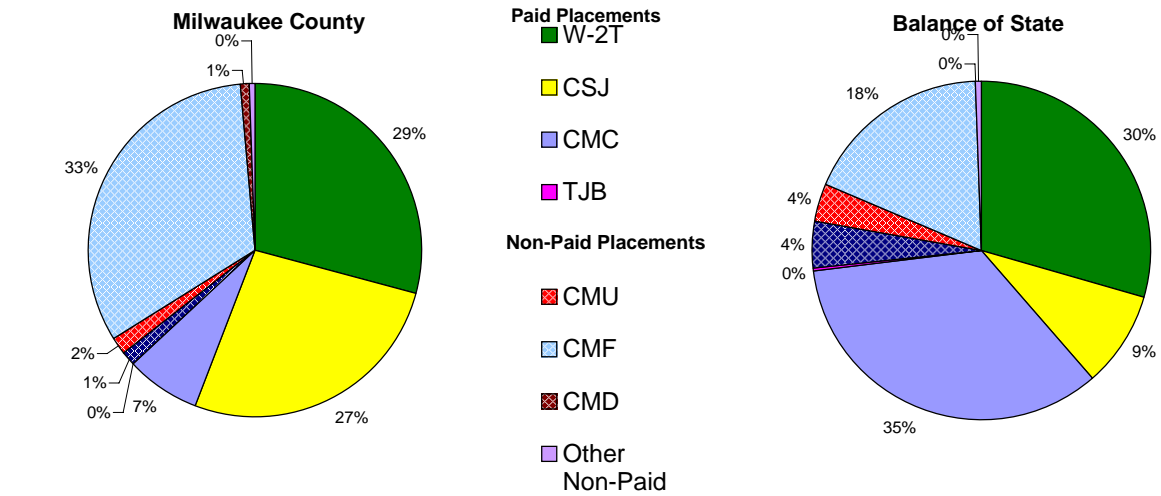
W-2 Benefits Paid - Most Recent Six Months

	Apr 2006	May 2006	Jun 2006	Jul 2006	Aug 2006	Sep 2006
Milwaukee County	\$ 3,123,796	\$ 3,138,226	\$ 3,142,394	\$ 3,010,412	\$ 3,026,357	\$ 2,962,624
Balance of State	1,065,435	1,027,538	1,010,746	974,483	986,962	950,322
Statewide	\$4,189,231	\$4,165,764	\$4,153,140	\$3,984,895	\$4,013,319	\$3,912,946

Source: CARES, Bureau of Workforce Information, Division of Workforce Solutions, Department of Workforce Development

*Note: The benefits paid are the total monthly net benefits after sanctions and recoupments are applied.

Placement of W-2 Participants, September 2006



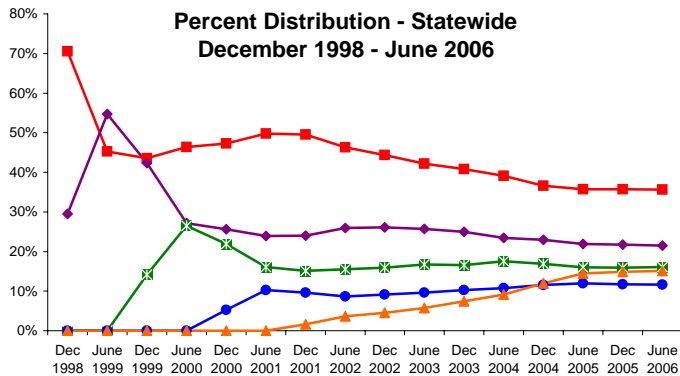
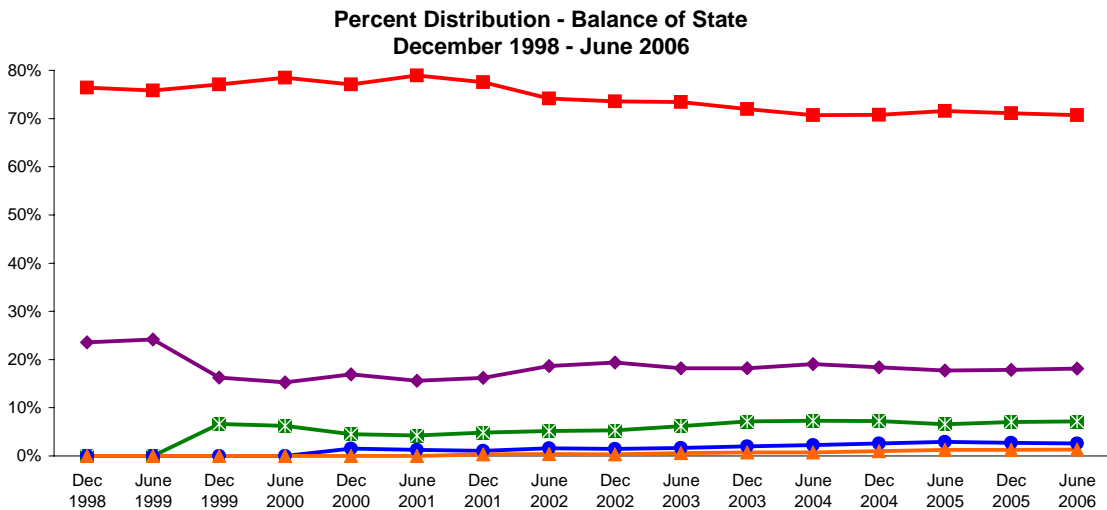
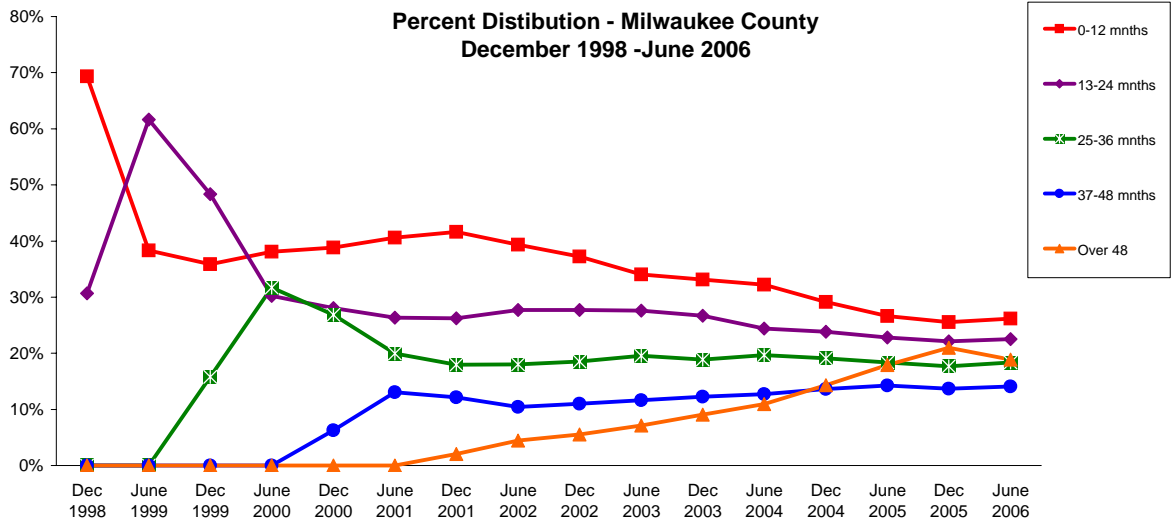
Number and Percent of W-2 Participants in Placements

	Milwaukee County		BOS		Statewide	
	#	%	#	%	#	%
W-2T	2,281	46%	672	40%	2,953	44%
CSJ	2,098	43	213	13	2,428	36
CMC	551	11	788	47	1,339	20
TJB	5	0	8	0	13	0
Paid Total	4,935	63%	1,681	73%	6,733	66%
CMS	102	4	98	16	200	6
CMU	142	5	82	13	224	6
CMF	2,547	88	417	69	2,964	85
CMD	50	1	1	0	60	1
Other Non-Paid	39	1	10	2	49	1
Non-Paid Total	2,880	37%	608	27%	3,497	34%
Grand Total	7,815		2,289		10,230	

Source: CARES, Bureau of Workforce Information, Division of Workforce Solutions, Department of Workforce Development.

- * Note:
- W-2 Transition (W-2T)..... A W-2 work-readiness practice placement for individuals who are unable to perform independent, self-sustaining work, but who are able to participate in work practice or other developmental activities and training up to their abilities.
 - Community Service Job (CSJ)..... A W-2 work-readiness practice placement designed to improve the employability of participants by providing work experience and training in the public and private sectors.
 - Trial Job (TJB)..... A W-2 subsidized employment position that provides work experience and training which may become permanent, unsubsidized employment. Paid directly to the employer.
 - Case Mgmt - Caretaker of a Newborn (CMC)..... A custodial parent of a child who is 12 weeks old or less and who meets the financial and non-financial eligibility requirements for W-2 employment positions.
 - Case Mgmt - Pregnancy (CMP)..... A participant with a medically verified pregnancy.
 - Case Mgmt - Service for Job Ready (CMS)..... Used for case management services for unemployed individuals who have been assessed as having the capability of obtaining immediate full-time employment.
 - Case Mgmt - Service for Job Ready (CMS).... Used for case management services for unemployed individuals who have been assessed as having the capability of obtaining immediate full-time employment.
 - Case Mgmt- Denied Extension (CMD)..... Job ready participants denied an extension of time-limited benefits.
 - Case Mgmt - Service for Working (CMU)..... Used for individuals working in unsubsidized employment who are without barriers to full-time employment.
 - Case Mgmt - Non-Custodial Parent (CMN)..... Used for case management services for non-custodial parents.
 - Case Mgmt - Minor Parent (CMM)..... Used for case management services for a custodial minor parent.

Number of Months Served in W-2*



Number of Months Served in W-2 - Most Recent Six Months

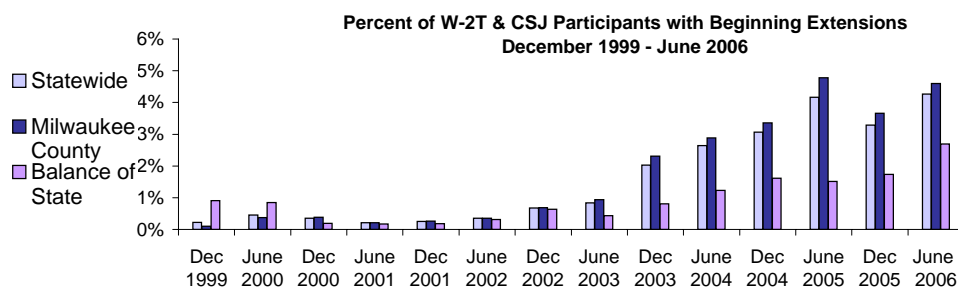
Months	Apr	May	Jun	Jul	Aug	Sep
	2006	2006	2006	2006	2006	2006
Milwaukee County						
0-12	2181	2215	2273	2251	2271	2233
13-24	1484	1492	1504	1526	1559	1591
25-36	1225	1296	1338	1357	1371	1357
37-48	951	998	1043	1065	1093	1095
Over 48	1572	1608	1628	1658	1678	1695
Balance of State						
0-12	1687	1714	1711	1683	1716	1616
13-24	554	548	545	544	523	509
25-36	187	188	190	194	204	225
37-48	87	92	85	86	83	77
Over 48	48	54	54	55	54	54
Statewide						
0-12	3634	3685	3734	3682	3726	3602
13-24	1986	1997	2009	2043	2057	2070
25-36	1423	1493	1536	1550	1567	1578
37-48	1043	1095	1131	1155	1181	1181
Over 48	1638	1679	1699	1733	1755	1767

Source: CARES, Bureau of Workforce Information, Division of Workforce Solutions, Department of Workforce Development.

*Note: Length of stay is determined for the W-2 participants in the report month by the number of total months a participant has been in W-2 since the beginning of the program.

*Note: Participants may be counted more than once if their geographic location changes from Milwaukee to Balance of State or vice versa.

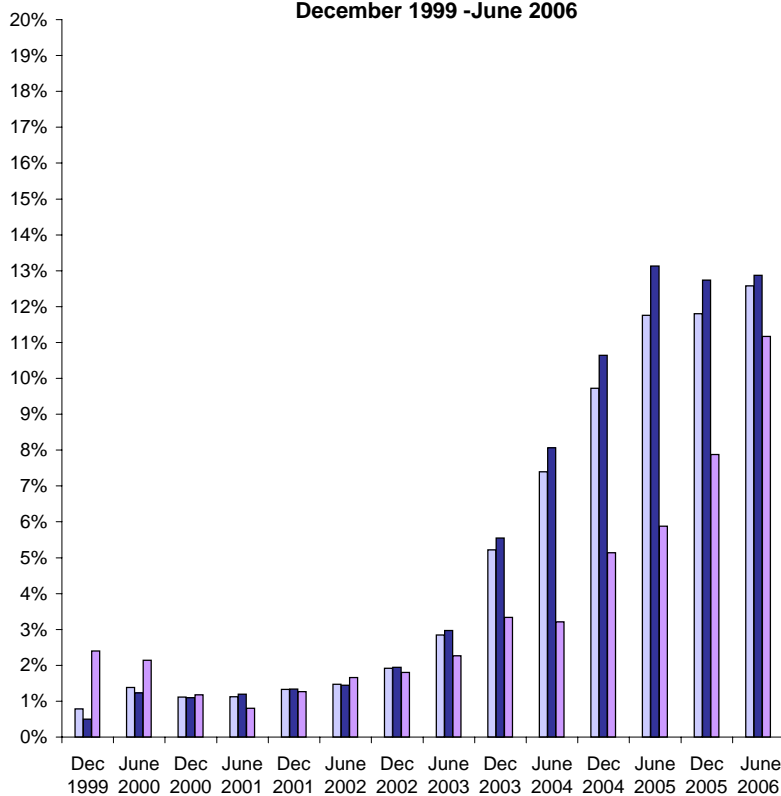
Extensions Granted for 24 Month Clocks*



Number of Beginning Extensions - Most Recent Six Months

	Apr 2006	May 2006	Jun 2006	Jul 2006	Aug 2006	Sep 2006
Milwaukee County	183	203	218	193	189	198
Balance of State	22	30	27	29	36	26
Statewide	205	233	245	222	225	224

Percent of W-2T & CSJ Participants with Ongoing Extensions December 1999 - June 2006



Number of Ongoing Extensions - Most Recent Six Months

	Apr 2006	May 2006	June 2006	July 2006	Aug 2006	Sep 2006
Milwaukee County	528	544	562	564	549	517
Balance of State	93	98	103	90	98	94
Statewide	621	642	665	654	647	611

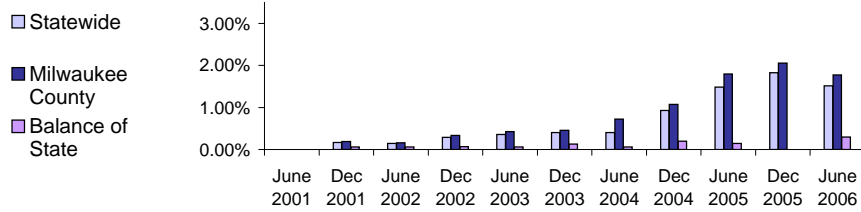
Source: CARES, Bureau of Workforce Information, Division of Workforce Solutions, Department of Workforce Development.

*Note: Extensions can be granted after 24 months of participation in a W-2T or CSJ placement. Extensions are granted when the participant is nearing the 24th month of their placement clock and they qualify for extended eligibility by meeting specific required criteria.

*Note: Participants may be counted more than once if the participant's extension lasts longer than six months. Ongoing Extensions are an end of the month count.

Extensions Granted for 60 Month Clocks*

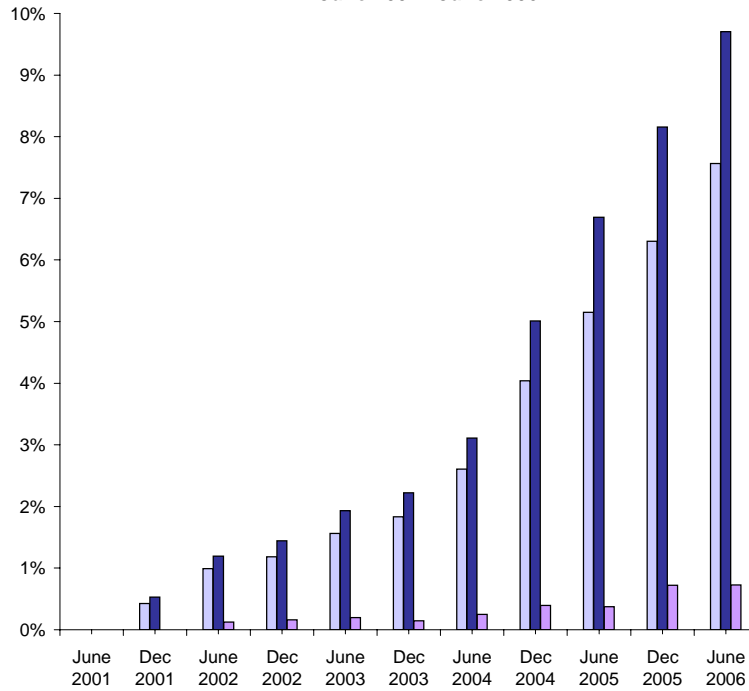
Percent of Participants with Beginning Extensions June 2001 - June 2006



Number of Beginning Extensions - Most Recent Six Months

	Apr 2006	May 2006	Jun 2006	Jul 2006	Aug 2006	Sep 2006
Milwaukee County	118	105	113	113	109	112
Balance of State	3	1	4	2	5	3
Statewide	121	106	117	115	114	115

Percent of Participants with Ongoing Extensions June 2001 - June 2006



Number of Ongoing Extensions - Most Recent Six Months

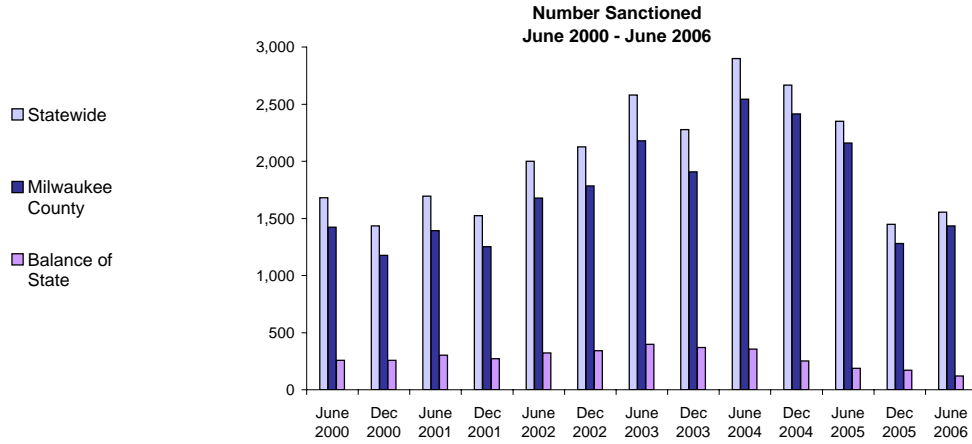
	Apr 2006	May 2006	Jun 2006	Jul 2006	Aug 2006	Sep 2006
Milwaukee County	481	471	469	458	446	462
Balance of State	14	7	11	11	13	11
Statewide	495	478	480	469	459	473

Source: CARES, Bureau of Workforce Information, Division of Workforce Solutions, Department of Workforce Development.

*Note: Extensions can be granted after 60 months of lifetime participation. Extensions are granted when the participant is nearing the 60th month of their lifetime clock and they qualify for extended eligibility by meeting specific required criteria. The 60 month extensions first became relevant as of September 2001.

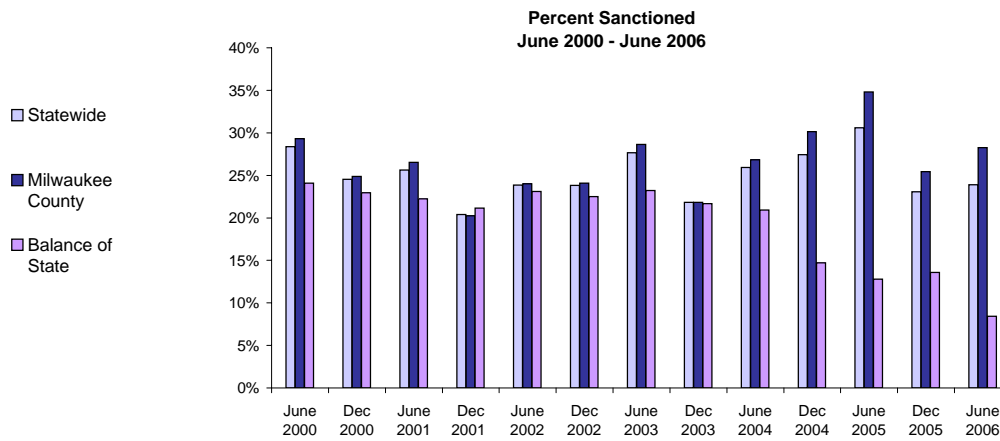
*Note: Participants may be counted more than once if the participant's extension lasts longer than six months. Ongoing Extensions are an end of the month count.

W-2T and CSJ Participants Who Were Sanctioned*



Number Sanctioned - Most Recent Six Months

	Apr 2006	May 2006	Jun 2006	Jul 2006	Aug 2006	Sep 2006
Milwaukee County	1,284	1,302	1,433	1,375	1,525	1,360
Balance of State	116	127	121	145	134	136
Statewide	1,400	1,429	1,554	1,520	1,659	1,496



Percent Sanctioned - Most Recent Six Months

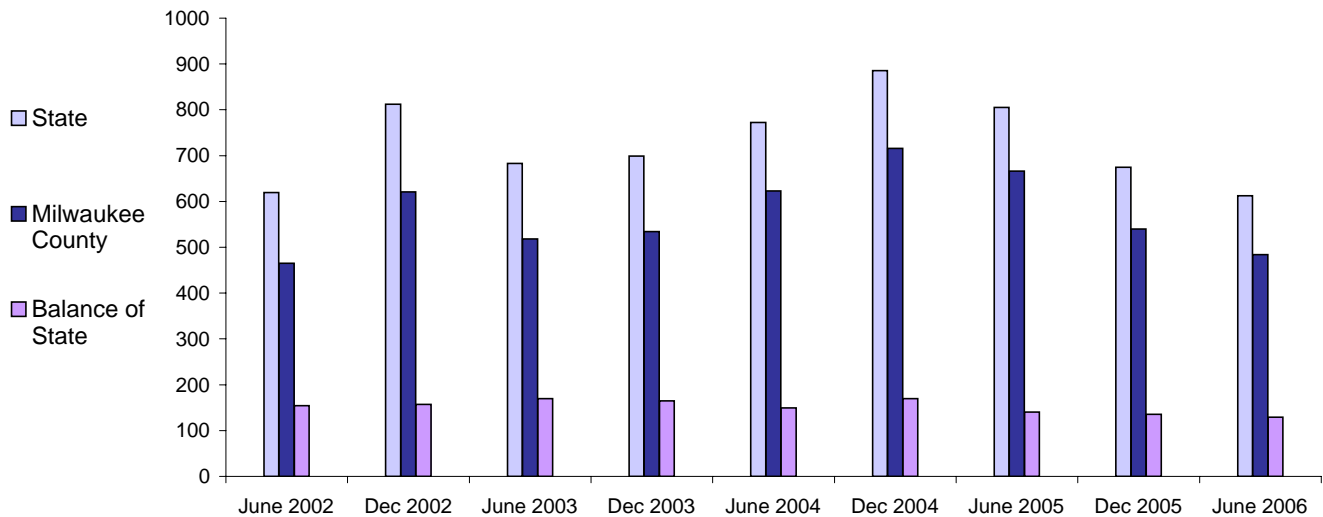
	Apr 2006	May 2006	Jun 2006	Jul 2006	Aug 2006	Sep 2006
Milwaukee County	27%	27%	28%	27%	30%	28%
Balance of State	10%	11%	11%	13%	11%	12%
Statewide	24%	24%	25%	24%	27%	25%

Source: CARES, Bureau of Workforce Information, Division of Workforce Solutions, Department of Workforce Development.

* Note: Because sanction counts prior to September 1999 were counted differently they are not included in these graphs. The graphs on this page report information on the sanctionable population (W-2T and CSJ placements only). The data represented here are point in time during a month.

W-2 Participants Entered Employment

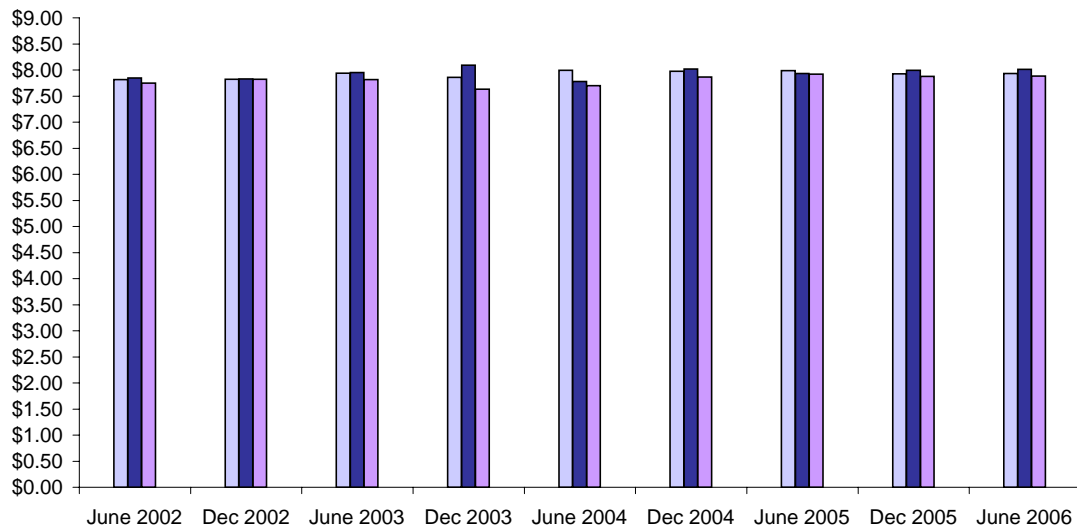
Average Number Entered Employment* June 2002-June 2006



Total Number Entered Employment - Most Recent Six Months

	Apr 2006	May 2006	Jun 2006	Jul 2006	Aug 2006	Sep 2006
Milwaukee County	248	303	332	284	371	351
Balance of State	88	120	81	81	89	92
Statewide	336	423	413	365	460	443

Average Hourly Wage* June 2002 - June 2006



Average Hourly Wage - Most Recent Six Months

	Apr 2006	May 2006	Jun 2006	Jul 2006	Aug 2006	Sep 2006
Milwaukee County	\$ 8.15	\$ 8.02	\$ 8.04	\$ 8.09	\$ 8.05	\$ 8.48
Balance of State	\$ 8.15	\$ 7.82	\$ 8.33	\$ 7.91	\$ 8.26	\$ 8.17
Statewide	\$ 8.06	\$ 8.02	\$ 8.03	\$ 8.04	\$ 8.04	\$ 8.40

Source: CARES, Bureau of Workforce Information, Division of Workforce Solutions, Department of Workforce Development.

* Note: Entered Employment is a W-2 program performance measure counted when a participant obtains or increases wages in a new job. Entered Employment for less than 30 days are excluded. Wage data are for jobs with hourly wages.