

Wisconsin W-2 Participants in Paid Placements*

Number of Participants in Paid Placements					
	One Year Ago	Last Month	This Month	Change in Most Recent Two Months	
	Aug 2005	Jul 2006	Aug 2006	Number	Percent
Paid Participants:					
Milwaukee County	5,902	5,252	5,153	-99	-1.9%
Balance of State	2,160	1,803	1,087	-716	-65.9%
Statewide Caseload	8,062	7,055	6,960	-95	-1.4%
Milwaukee County Regions:	Aug 2005	Jul 2006	Aug 2006	Number	Percent
Milwaukee NE YWCA	833	655	646	-9	-1.4%
Milwaukee SE UMOS	772	733	722	-11	-1.5%
Milwaukee Central UMOS	1,548	1,371	1,379	8	0.6%
Milwaukee NW MAXIMUS	1,626	1,252	1,239	-13	-1.0%
Milwaukee SW MAXIMUS	1,121	946	856	-90	-10.5%
Milwaukee SSI-Adv UMOS	0	295	311	16	
Milwaukee County Total*:	5,902	5,252	5,153	-99	-1.9%

Source: CARES, Bureau of Workforce Information, Division of Workforce Solutions, Department of Workforce Development.

* Milwaukee County total includes a small number of cases served by Milwaukee County Department of Social Services.

Note: The paid caseload includes the following categories of placements:

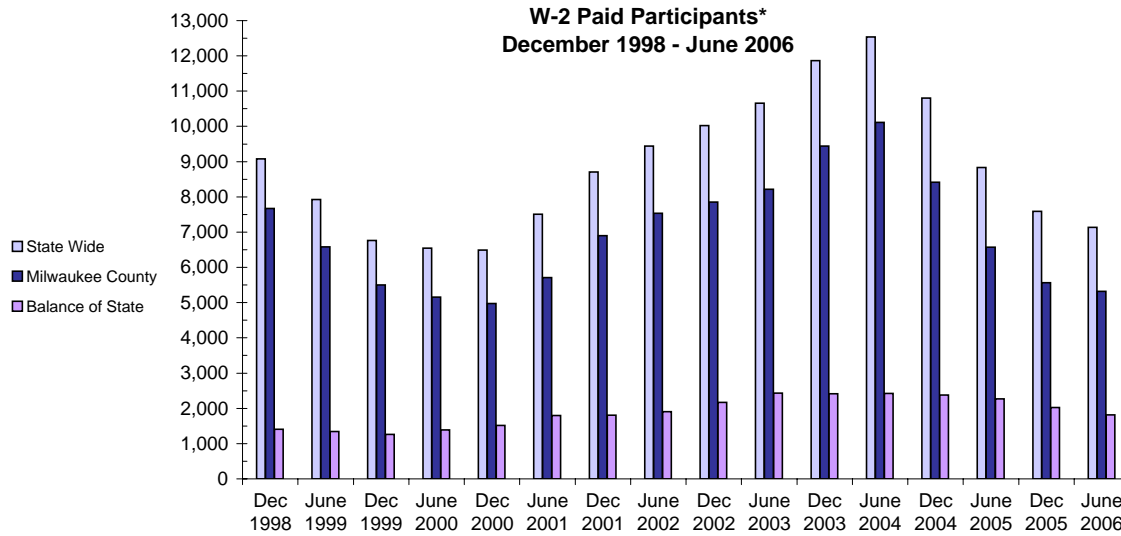
W-2 Transition (W-2T)..... A W-2 work-readiness practice placement for individuals who are unable to perform independent, self-sustaining work, but who are able to participate in work practice or other developmental activities and training up to their abilities.

Community Service Job (CSJ)..... A W-2 work-readiness practice placement designed to improve the employability of participants by providing work experience and training in the public and private sectors.

Trial Job (TJB)..... A W-2 subsidized employment position that provides work experience and training which may become permanent, unsubsidized employment. Paid directly to the employer.

Case Mgmt- Caretaker of Newborn (CMA custodial parent of a child who is 12 weeks old or less and who meets the financial and non-financial eligibility requirements for W-2 employment positions.

W-2 Paid Participants and Benefits Paid

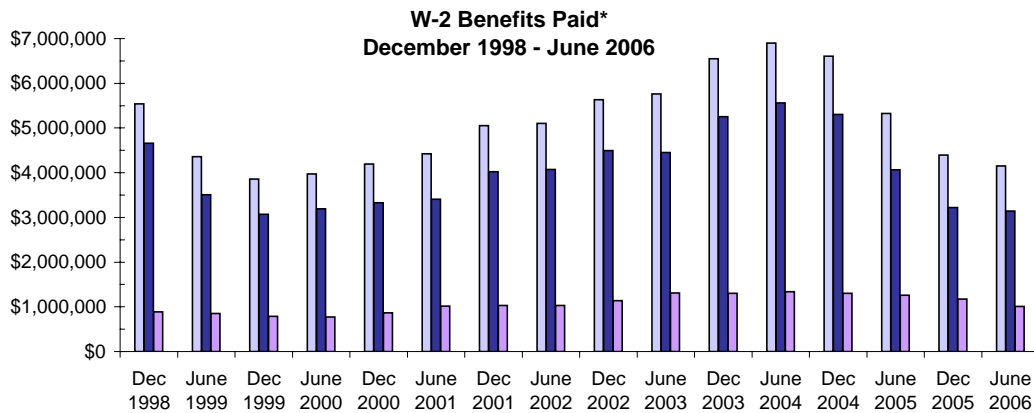


W-2 Paid Participants - Most Recent Six Months

	Mar 2006	Apr 2006	May 2006	Jun 2006	Jul 2006	Aug 2006
Milwaukee County	5,416	5,400	5,396	5,324	5,252	5,153
Balance of State	1,912	1,830	1,833	1,814	1,803	1,807
Statewide	7,328	7,230	7,229	7,138	7,055	6,960

Source: CARES, Bureau of Workforce Information, Division of Workforce Solutions, Department of Workforce Development

*Note: The paid participants included in this count are participants who were in a paid placement during the report month.



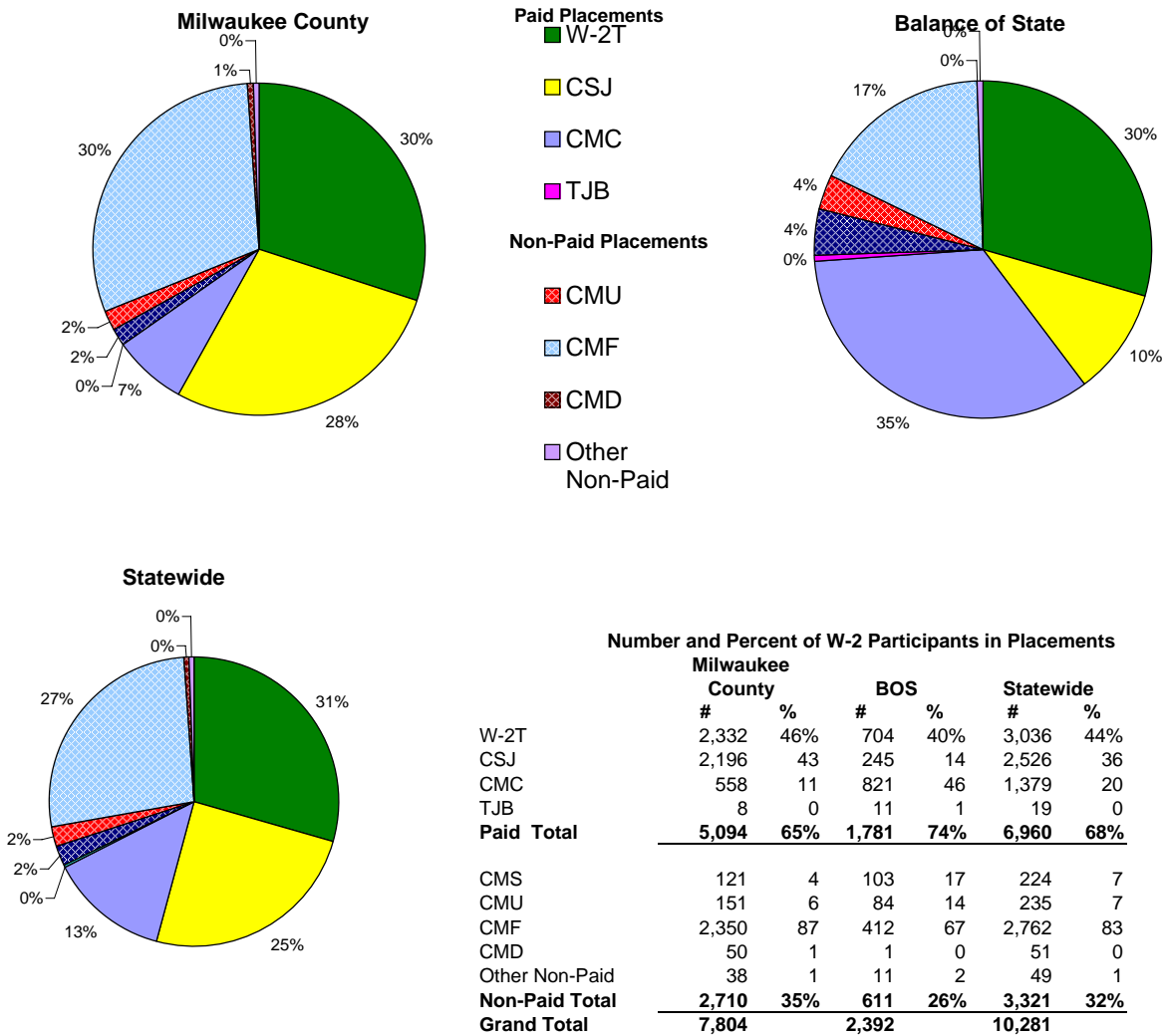
W-2 Benefits Paid - Most Recent Six Months

	Mar 2006	Apr 2006	May 2006	Jun 2006	Jul 2006	Aug 2006
Milwaukee County \$	3,227,677	3,123,796	3,138,226	3,142,394	3,010,412	3,026,357
Balance of State	1,061,396	1,065,435	1,027,538	1,010,746	974,483	986,962
Statewide	\$4,289,073	\$4,189,231	\$4,165,764	\$4,153,140	\$3,984,895	\$4,013,319

Source: CARES, Bureau of Workforce Information, Division of Workforce Solutions, Department of Workforce Development

*Note: The benefits paid are the total monthly net benefits after sanctions and recoupments are applied.

Placement of W-2 Participants, August 2006



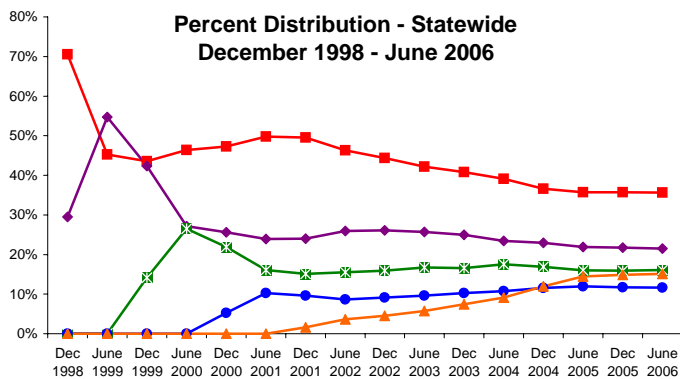
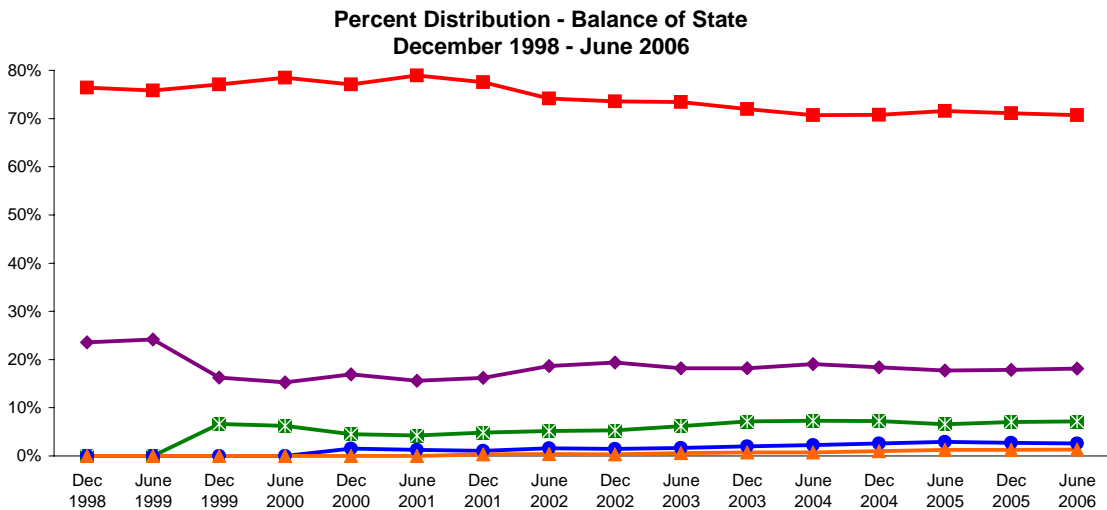
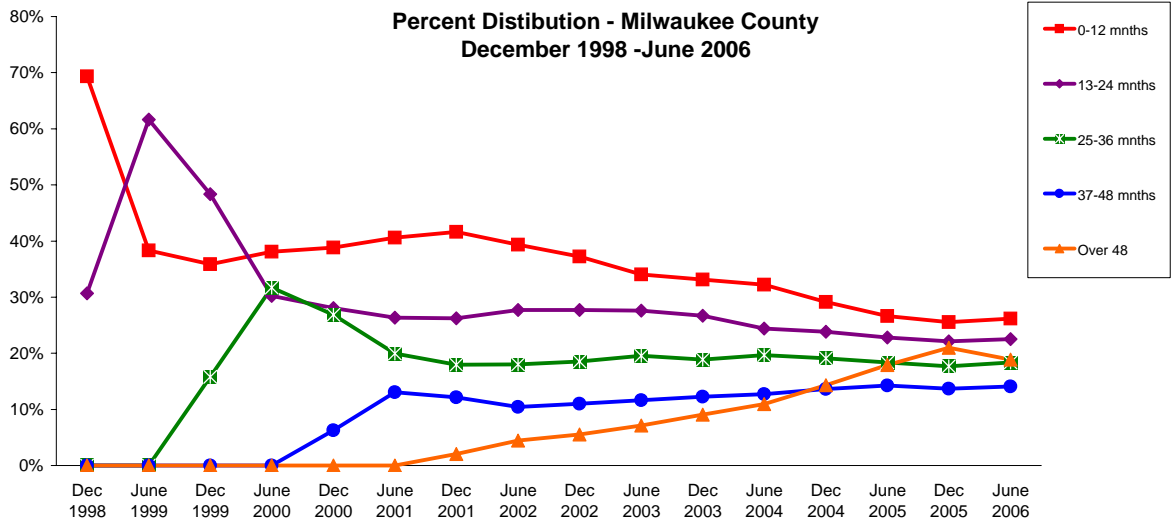
Number and Percent of W-2 Participants in Placements

	Milwaukee County		BOS		Statewide	
	#	%	#	%	#	%
W-2T	2,332	46%	704	40%	3,036	44%
CSJ	2,196	43	245	14	2,526	36
CMC	558	11	821	46	1,379	20
TJB	8	0	11	1	19	0
Paid Total	5,094	65%	1,781	74%	6,960	68%
CMS	121	4	103	17	224	7
CMU	151	6	84	14	235	7
CMF	2,350	87	412	67	2,762	83
CMD	50	1	1	0	51	0
Other Non-Paid	38	1	11	2	49	1
Non-Paid Total	2,710	35%	611	26%	3,321	32%
Grand Total	7,804		2,392		10,281	

Source: CARES, Bureau of Workforce Information, Division of Workforce Solutions, Department of Workforce Development.

- * Note:
- W-2 Transition (W-2T)..... A W-2 work-readiness practice placement for individuals who are unable to perform independent, self-sustaining work, but who are able to participate in work practice or other developmental activities and training up to their abilities.
 - Community Service Job (CSJ)..... A W-2 work-readiness practice placement designed to improve the employability of participants by providing work experience and training in the public and private sectors.
 - Trial Job (TJB)..... A W-2 subsidized employment position that provides work experience and training which may become permanent, unsubsidized employment. Paid directly to the employer.
 - Case Mgmt - Caretaker of a Newborn (CMC)..... A custodial parent of a child who is 12 weeks old or less and who meets the financial and non-financial eligibility requirements for W-2 employment positions.
 - Case Mgmt - Pregnancy (CMP)..... A participant with a medically verified pregnancy.
 - Case Mgmt - Service for Job Ready (CMS)..... Used for case management services for unemployed individuals who have been assessed as having the capability of obtaining immediate full-time employment.
 - Case Mgmt - Service for Job Ready (CMS).... Used for case management services for unemployed individuals who have been assessed as having the capability of obtaining immediate full-time employment.
 - Case Mgmt- Denied Extension (CMD)..... Job ready participants denied an extension of time-limited benefits.
 - Case Mgmt - Service for Working (CMU)..... Used for individuals working in unsubsidized employment who are without barriers to full-time employment.
 - Case Mgmt - Non-Custodial Parent (CMN)..... Used for case management services for non-custodial parents.
 - Case Mgmt - Minor Parent (CMM)..... Used for case management services for a custodial minor parent.

Number of Months Served in W-2*



Number of Months Served in W-2 - Most Recent Six Months

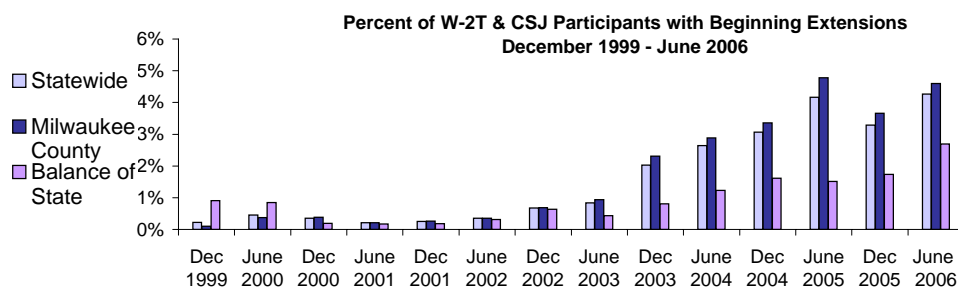
Months	Mar 2006	Apr 2006	May 2006	Jun 2006	Jul 2006	Aug 2006
	Milwaukee County					
0-12	2175	2181	2215	2273	2251	2271
13-24	1485	1484	1492	1504	1526	1559
25-36	1176	1225	1296	1338	1357	1371
37-48	939	951	998	1043	1065	1093
Over 48	1522	1572	1608	1628	1658	1678
Balance of State						
0-12	1747	1687	1714	1711	1683	1716
13-24	555	554	548	545	544	523
25-36	185	187	188	190	194	204
37-48	94	87	92	85	86	83
Over 48	46	48	54	54	55	54
Statewide						
0-12	3682	3634	3685	3734	3682	3726
13-24	1993	1986	1997	2009	2043	2057
25-36	1372	1423	1493	1536	1550	1567
37-48	1037	1043	1095	1131	1155	1181
Over 48	1585	1638	1679	1699	1733	1755

Source: CARES, Bureau of Workforce Information, Division of Workforce Solutions, Department of Workforce Development.

*Note: Length of stay is determined for the W-2 participants in the report month by the number of total months a participant has been in W-2 since the beginning of the program.

*Note: Participants may be counted more than once if their geographic location changes from Milwaukee to Balance of State or vice versa.

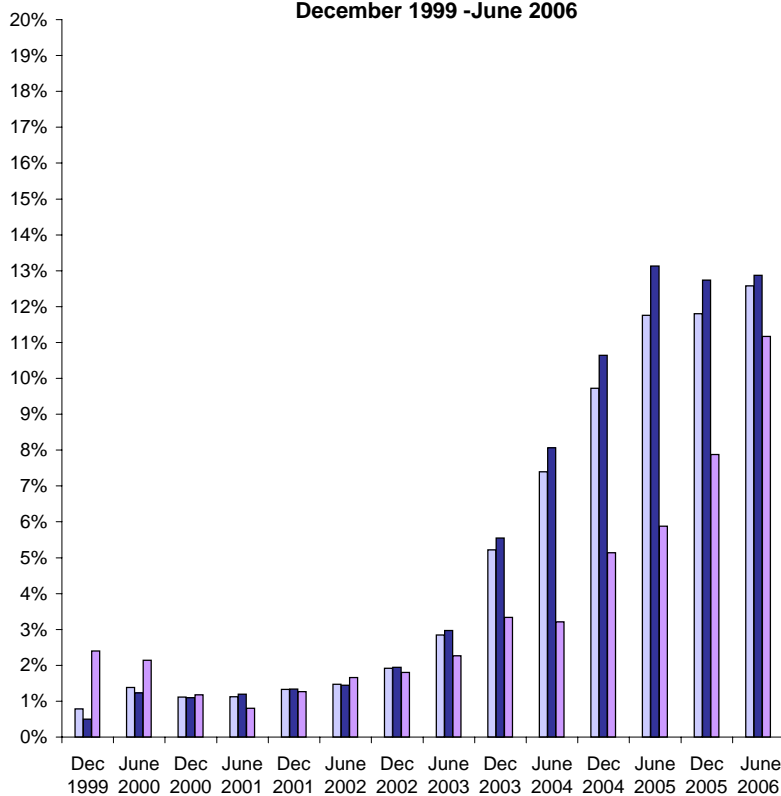
Extensions Granted for 24 Month Clocks*



Number of Beginning Extensions - Most Recent Six Months

	Mar 2006	Apr 2006	May 2006	Jun 2006	Jul 2006	Aug 2006
Milwaukee County	200	183	203	218	193	189
Balance of State	29	22	30	27	29	39
Statewide	229	205	233	245	222	225

Percent of W-2T & CSJ Participants with Ongoing Extensions December 1999 - June 2006



Number of Ongoing Extensions - Most Recent Six Months

	Mar 2006	Apr 2006	May 2006	June 2006	July 2006	Aug 2006
Milwaukee County	547	528	544	562	564	549
Balance of State	96	93	98	103	90	98
Statewide	643	621	642	665	654	647

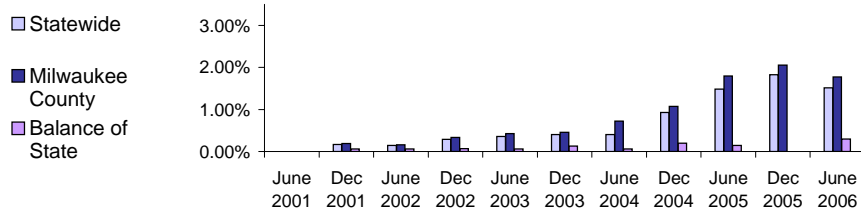
Source: CARES, Bureau of Workforce Information, Division of Workforce Solutions, Department of Workforce Development.

*Note: Extensions can be granted after 24 months of participation in a W-2T or CSJ placement. Extensions are granted when the participant is nearing the 24th month of their placement clock and they qualify for extended eligibility by meeting specific required criteria.

*Note: Participants may be counted more than once if the participant's extension lasts longer than six months. Ongoing Extensions are an end of the month count.

Extensions Granted for 60 Month Clocks*

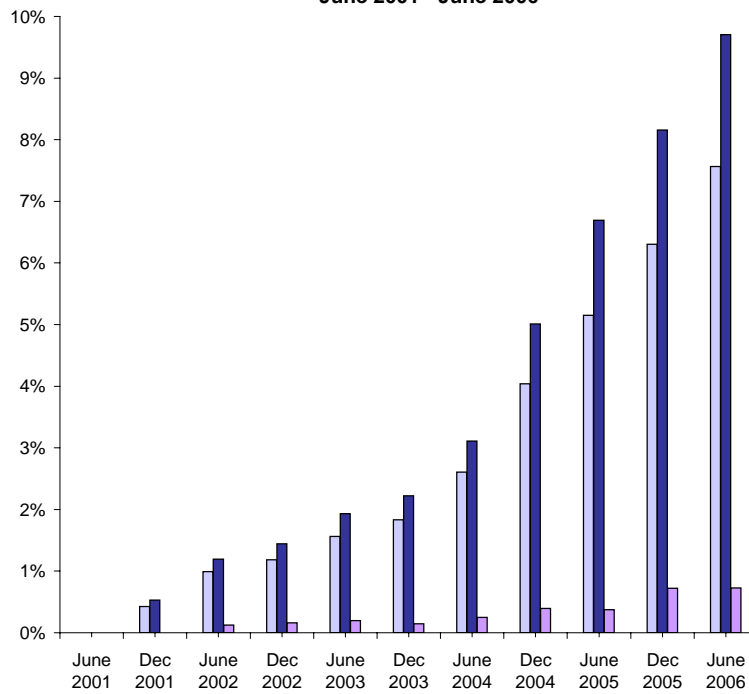
Percent of Participants with Beginning Extensions June 2001 - June 2006



Number of Beginning Extensions - Most Recent Six Months

	Mar 2006	Apr 2006	May 2006	Jun 2006	Jul 2006	Aug 2006
Milwaukee County	122	118	105	113	113	109
Balance of State	2	3	1	4	2	5
Statewide	124	121	106	117	115	114

Percent of Participants with Ongoing Extensions June 2001 - June 2006



Number of Ongoing Extensions - Most Recent Six Months

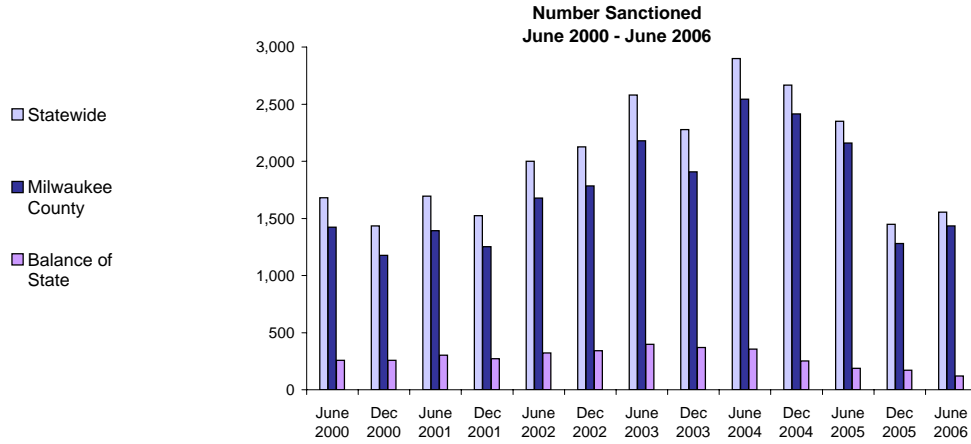
	Mar 2006	Apr 2006	May 2006	Jun 2006	Jul 2006	Aug 2006
Milwaukee County	464	481	471	469	458	446
Balance of State	11	14	7	11	11	13
Statewide	475	495	478	480	469	459

Source: CARES, Bureau of Workforce Information, Division of Workforce Solutions, Department of Workforce Development.

*Note: Extensions can be granted after 60 months of lifetime participation. Extensions are granted when the participant is nearing the 60th month of their lifetime clock and they qualify for extended eligibility by meeting specific required criteria. The 60 month extensions first became relevant as of September 2001.

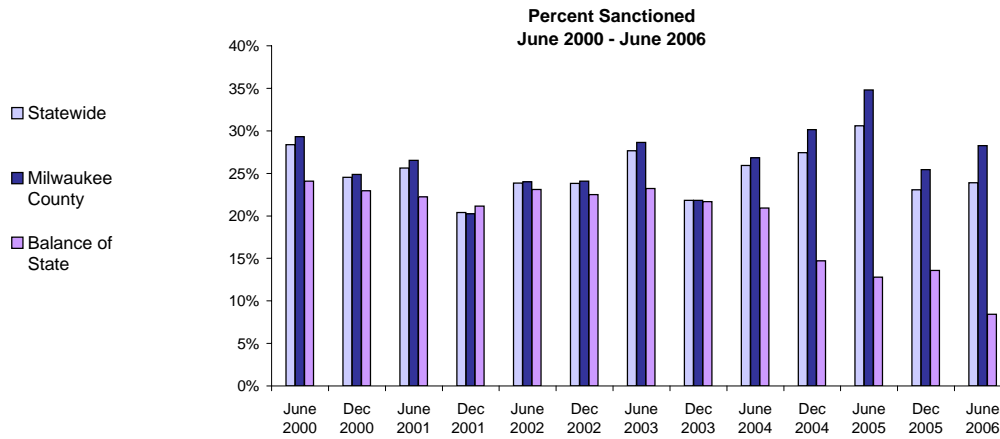
*Note: Participants may be counted more than once if the participant's extension lasts longer than six months. Ongoing Extensions are an end of the month count.

W-2T and CSJ Participants Who Were Sanctioned*



Number Sanctioned - Most Recent Six Months

	Mar 2006	Apr 2006	May 2006	Jun 2006	Jul 2006	Aug 2006
Milwaukee County	1,205	1,284	1,302	1,433	1,375	1,525
Balance of State	124	116	127	121	145	134
Statewide	1,329	1,400	1,429	1,554	1,520	1,659



Percent Sanctioned - Most Recent Six Months

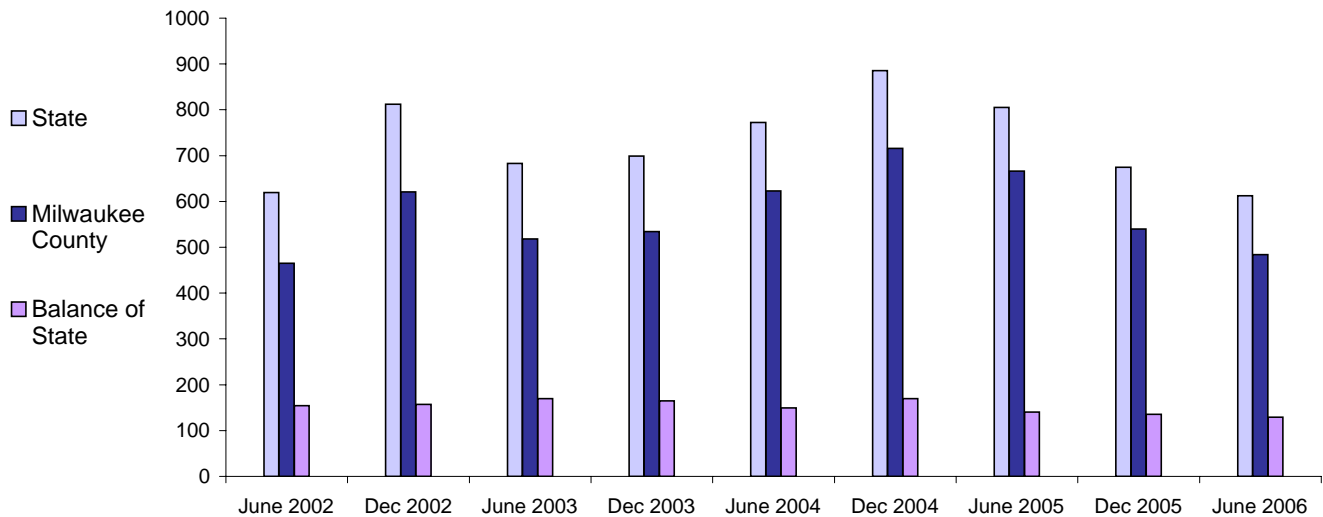
	Mar 2006	Apr 2006	May 2006	Jun 2006	Jul 2006	Aug 2006
Milwaukee County	25%	27%	27%	28%	27%	30%
Balance of State	11%	10%	11%	11%	13%	11%
Statewide	22%	24%	24%	25%	24%	27%

Source: CARES, Bureau of Workforce Information, Division of Workforce Solutions, Department of Workforce Development.

* Note: Because sanction counts prior to September 1999 were counted differently they are not included in these graphs. The graphs on this page report information on the sanctionable population (W-2T and CSJ placements only). The data represented here are point in time during a month.

W-2 Participants Entered Employment

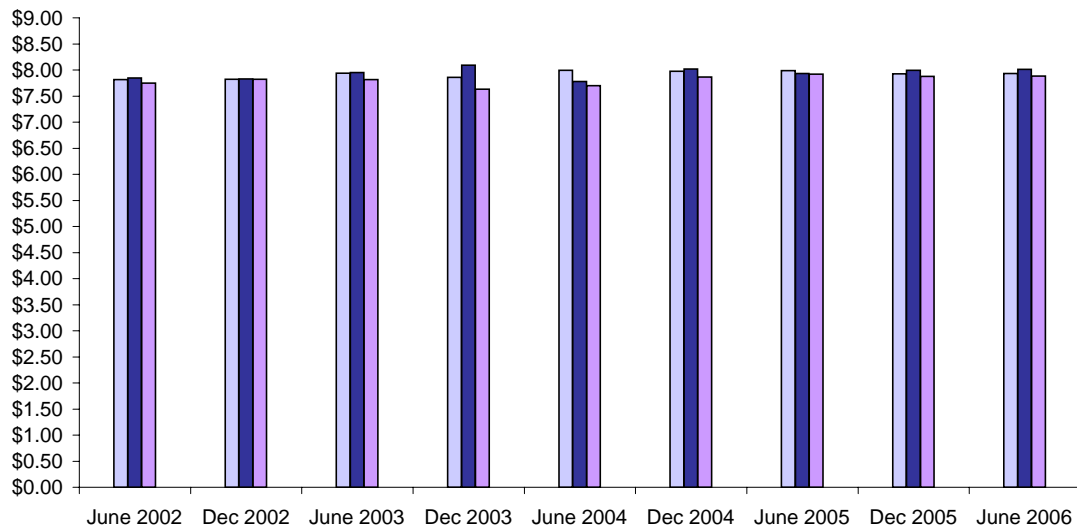
Average Number Entered Employment* June 2002-June 2006



Total Number Entered Employment - Most Recent Six Months

	Mar 2006	Apr 2006	May 2006	Jun 2006	Jul 2006	Aug 2006
Milwaukee County	259	248	303	332	284	371
Balance of State	102	88	120	81	81	89
Statewide	361	336	423	413	365	460

Average Hourly Wage* June 2002 - June 2006



Average Hourly Wage - Most Recent Six Months

	Mar 2006	Apr 2006	May 2006	Jun 2006	Jul 2006	Aug 2006
Milwaukee County	\$ 7.95	\$ 8.15	\$ 8.02	\$ 8.04	\$ 8.09	\$ 8.05
Balance of State	\$ 8.11	\$ 8.15	\$ 7.82	\$ 8.33	\$ 7.91	\$ 8.26
Statewide	\$ 8.05	\$ 8.06	\$ 8.02	\$ 8.03	\$ 8.04	\$ 8.04

Source: CARES, Bureau of Workforce Information, Division of Workforce Solutions, Department of Workforce Development.

* Note: Entered Employment is a W-2 program performance measure counted when a participant obtains or increases wages in a new job. Entered Employment for less than 30 days are excluded. Wage data are for jobs with hourly wages.