

Wisconsin W-2 Participants in Paid Placements*

Number of Participants in Paid Placements					
	One Year Ago	Last Month	This Month	Change in Most Recent Two Months	
	JUN 2005	MAY 2006	JUN 2006	Number	Percent
Paid Participants:					
Milwaukee County	6,571	5,396	5,324	-72	-1.4%
Balance of State	2,266	1,833	1,814	-19	-1.0%
Statewide Caseload	8,837	7,229	7,138	-91	-1.3%
Milwaukee County Regions:	Jun 2005	May 2006	Jun 2006	Number	Percent
Milwaukee NE YWCA	929	621	619	-2	-0.3%
Milwaukee SE UMOS	836	1,048	1,049	1	0.1%
Milwaukee Central UMOS	1,696	1,387	1,399	12	0.9%
Milwaukee NW MAXIMUS	1,921	1,358	1,301	-57	-4.4%
Milwaukee SW MAXIMUS	1,188	979	953	-26	-2.7%
Milwaukee County Total*:	6,571	5,396	5,324	-72	-1.4%

Source: CARES, Bureau of Workforce Information, Division of Workforce Solutions, Department of Workforce Development.

* Milwaukee County total includes a small number of cases served by Milwaukee County Department of Social Services.

Note: The paid caseload includes the following categories of placements:

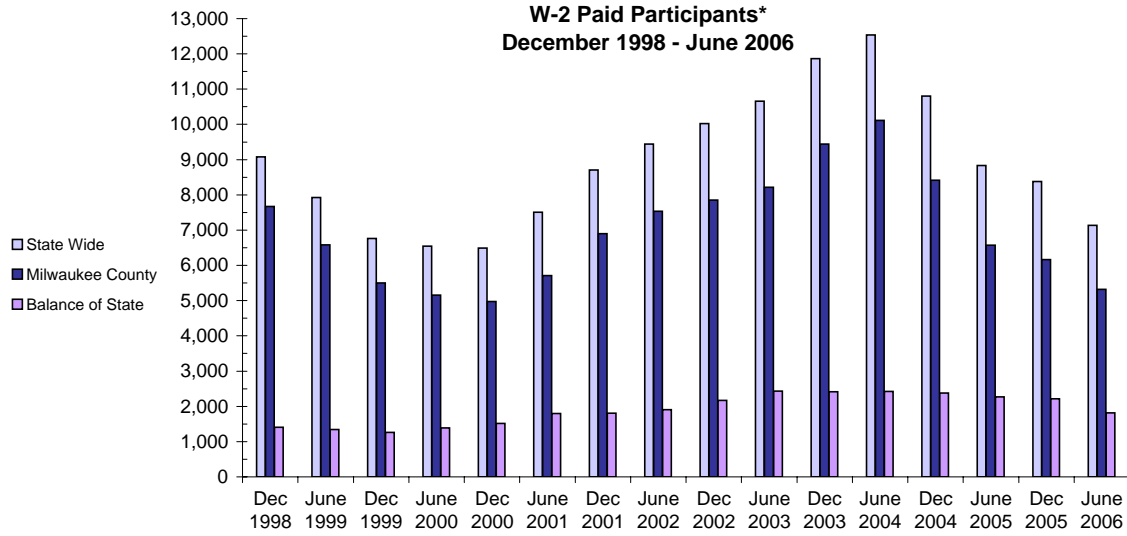
W-2 Transition (W-2T)..... A W-2 work-readiness practice placement for individuals who are unable to perform independent, self-sustaining work, but who are able to participate in work practice or other developmental activities and training up to their abilities.

Community Service Job (CSJ)..... A W-2 work-readiness practice placement designed to improve the employability of participants by providing work experience and training in the public and private sectors.

Trial Job (TJB)..... A W-2 subsidized employment position that provides work experience and training which may become permanent, unsubsidized employment. Paid directly to the employer.

Case Mgmt- Caretaker of Newborn (C)..... A custodial parent of a child who is 12 weeks old or less and who meets the financial and non-financial eligibility requirements for W-2 employment positions.

W-2 Paid Participants and Benefits Paid

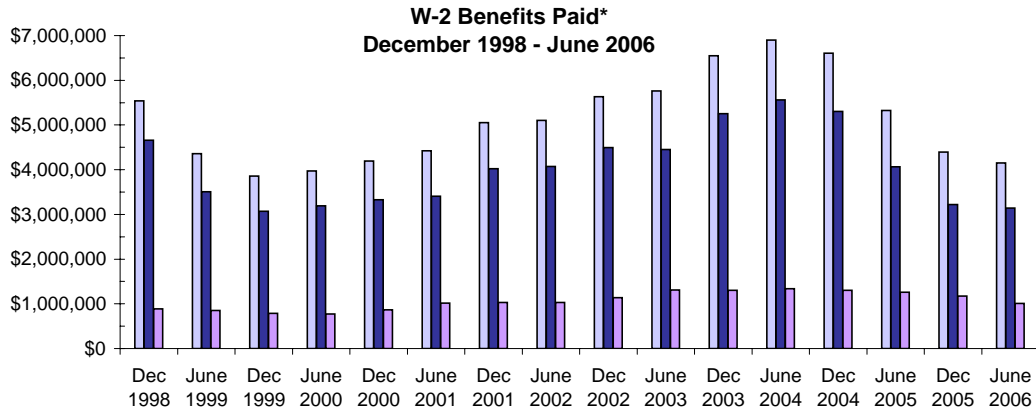


W-2 Paid Participants - Most Recent Six Months

	Jan 2006	Feb 2006	Mar 2006	Apr 2006	May 2006	Jun 2006
Milwaukee County	5,481	5,400	5,416	5,400	5,396	5,324
Balance of State	2,021	1,949	1,912	1,830	1,833	1,814
Statewide	7,502	7,349	7,328	7,230	7,229	7,138

Source: CARES, Bureau of Workforce Information, Division of Workforce Solutions, Department of Workforce Development

*Note: The paid participants included in this count are participants who were in a paid placement during the report month.



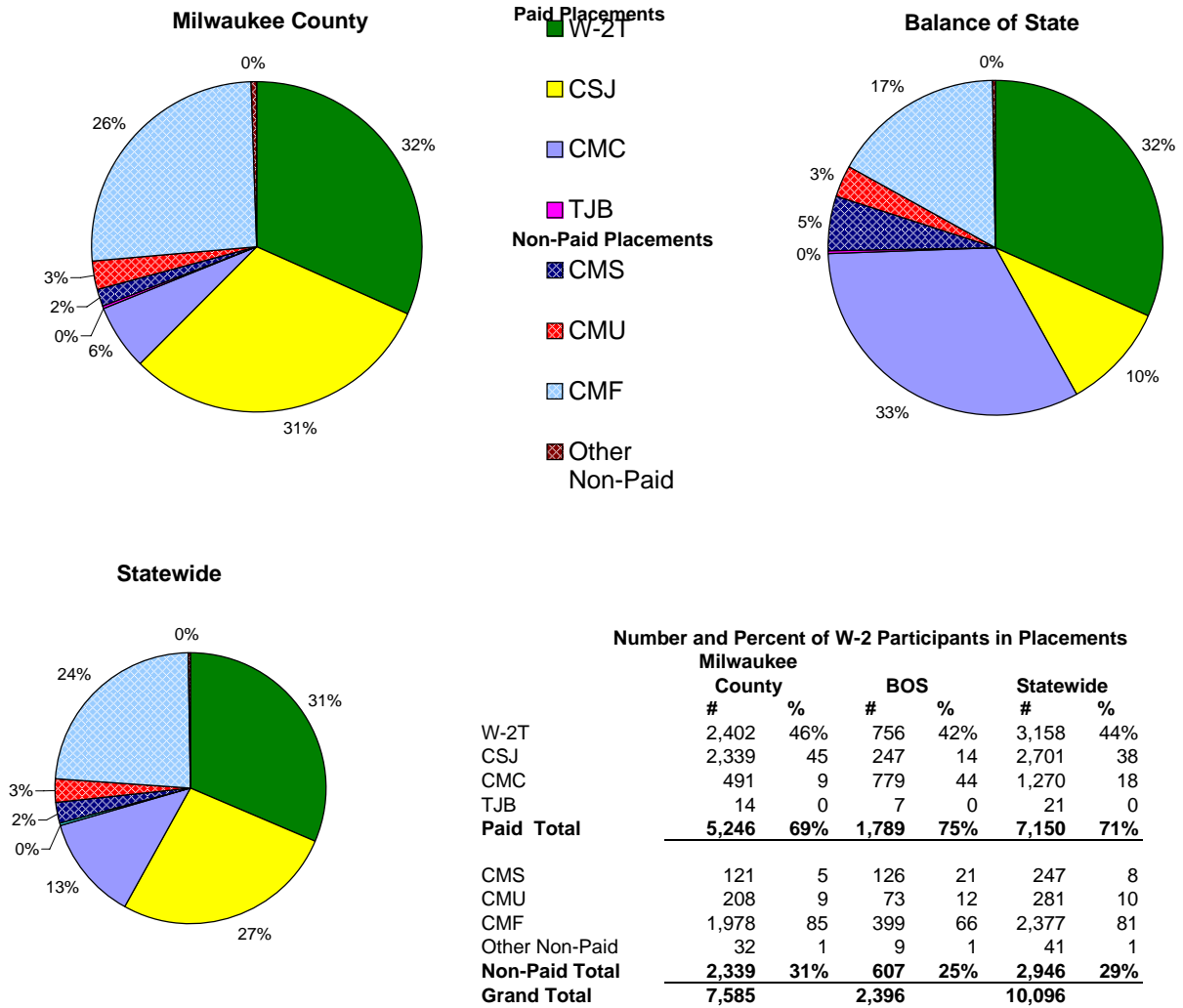
W-2 Benefits Paid - Most Recent Six Months

	Jan 2006	Feb 2006	Mar 2006	Apr 2006	May 2006	Jun 2006
Milwaukee County	\$ 3,244,531	\$ 3,262,089	\$ 3,227,677	\$ 3,123,796	\$ 3,138,226	\$ 3,142,394
Balance of State	1,130,288	1,106,703	1,061,396	1,065,435	1,027,538	1,010,746
Statewide	\$4,374,819	\$4,368,792	\$4,289,073	\$4,189,231	\$4,165,764	\$4,153,140

Source: CARES, Bureau of Workforce Information, Division of Workforce Solutions, Department of Workforce Development

*Note: The benefits paid are the total monthly net benefits after sanctions and recoupments are applied.

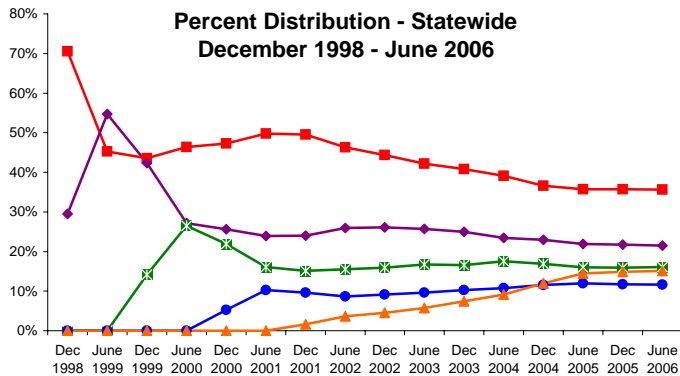
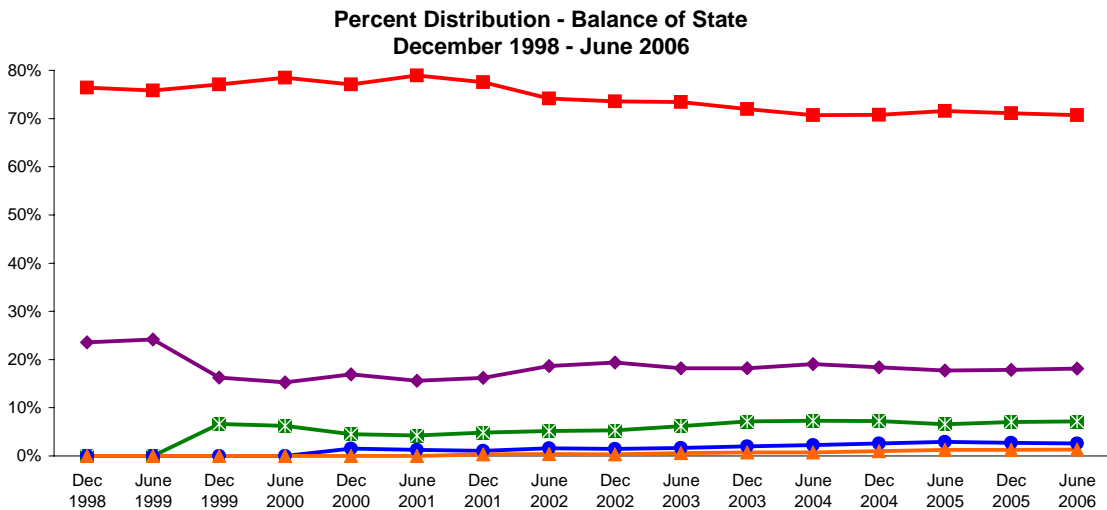
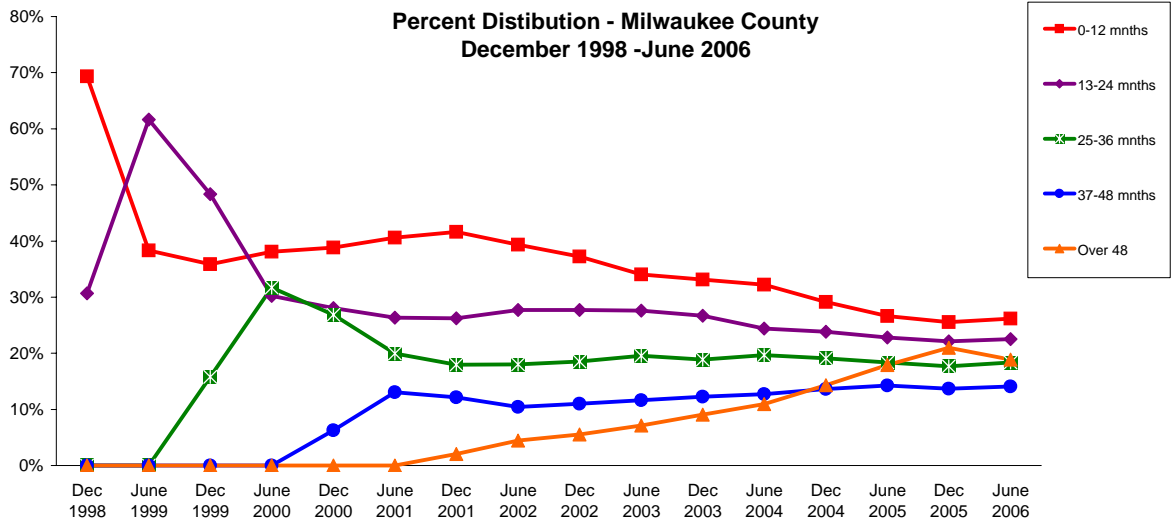
Placement of W-2 Participants, June 2006



Source: CARES, Bureau of Workforce Information, Division of Workforce Solutions, Department of Workforce Development.

- * Note:
- W-2 Transition (W-2T)..... A W-2 work-readiness practice placement for individuals who are unable to perform independent, self-sustaining work, but who are able to participate in work practice or other developmental activities and training up to their abilities.
 - Community Service Job (CSJ)..... A W-2 work-readiness practice placement designed to improve the employability of participants by providing work experience and training in the public and private sectors.
 - Trial Job (TJB)..... A W-2 subsidized employment position that provides work experience and training which may become permanent, unsubsidized employment. Paid directly to the employer.
 - Case Mgmt - Caretaker of a Newborn (CMC)..... A custodial parent of a child who is 12 weeks old or less and who meets the financial and non-financial eligibility requirements for W-2 employment positions.
 - Case Mgmt - Pregnancy (CMP)..... A participant with a medically verified pregnancy.
 - Case Mgmt - Service for Job Ready (CMS)..... Used for case management services for unemployed individuals who have been assessed as having the capability of obtaining immediate full-time employment.
 - Case Mgmt Follow-up (CMF)..... Used for case management services for participants who have moved up the W-2 ladder to unsubsidized employment.
 - Case Mgmt - Service for Working (CMU)..... Used for individuals working in unsubsidized employment who are without barriers to full-time employment.
 - Case Mgmt - Non-Custodial Parent (CMN)..... Used for case management services for non-custodial parents.
 - Case Mgmt - Minor Parent (CMM)..... Used for case management services for a custodial minor parent.

Number of Months Served in W-2*



Number of Months Served in W-2 - Most Recent Six Months

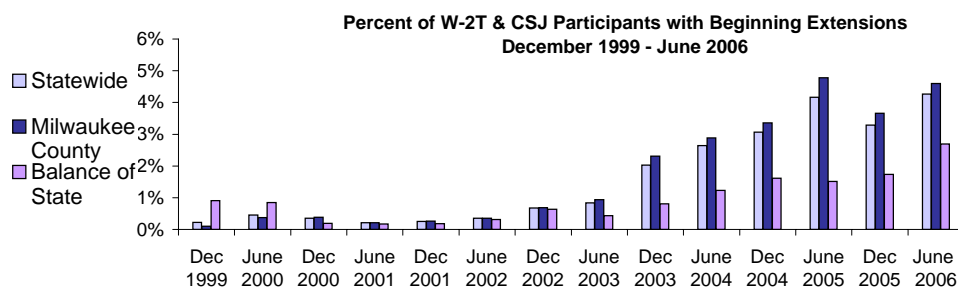
	Months	Jan 2006	Feb 2006	Mar 2006	Apr 2006	May 2006	JUN 2006
Milwaukee County	0-12	2142	2127	2175	2181	2215	2273
	13-24	1508	1488	1485	1484	1492	1504
	25-36	1196	1165	1176	1225	1296	1338
	37-48	985	937	939	951	998	1043
	Over 48	1458	1468	1522	1572	1608	1628
Balance of State	0-12	1791	1753	1747	1687	1714	1711
	13-24	587	564	555	554	548	545
	25-36	190	183	185	187	188	190
	37-48	88	93	94	87	92	85
	Over 48	44	44	46	48	54	54
Statewide	0-12	3685	3644	3682	3634	3685	3734
	13-24	2056	2007	1993	1986	1997	2009
	25-36	1396	1356	1372	1423	1493	1536
	37-48	1077	1031	1037	1043	1095	1131
	Over 48	1516	1531	1585	1638	1679	1699

Source: CARES, Bureau of Workforce Information, Division of Workforce Solutions, Department of Workforce Development.

*Note: Length of stay is determined for the W-2 participants in the report month by the number of total months a participant has been in W-2 since the beginning of the program.

*Note: Participants may be counted more than once if their geographic location changes from Milwaukee to Balance of State or vice versa.

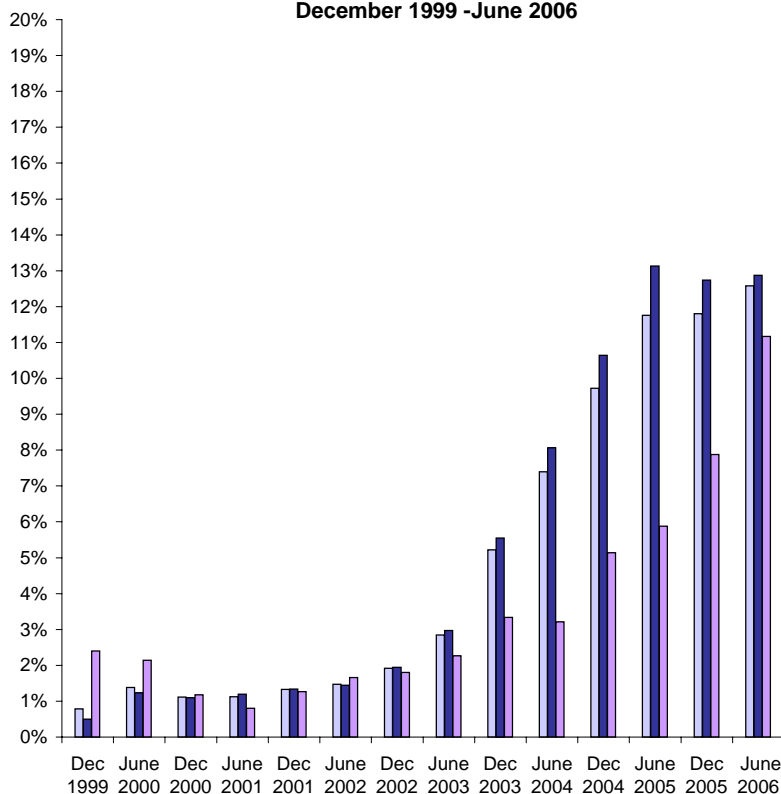
Extensions Granted for 24 Month Clocks*



Number of Beginning Extensions - Most Recent Six Months

	Jan 2006	Feb 2006	Mar 2006	Apr 2006	May 2006	Jun 2006
Milwaukee County	191	211	200	183	203	218
Balance of State	22	33	29	22	30	27
Statewide	213	244	229	205	233	245

Percent of W-2T & CSJ Participants with Ongoing Extensions December 1999 - June 2006



Number of Ongoing Extensions - Most Recent Six Months

	Jan 2006	Feb 2006	Mar 2006	Apr 2006	May 2006	June 2006
Milwaukee County	541	534	547	528	544	562
Balance of State	76	88	96	93	98	103
Statewide	617	622	643	621	642	665

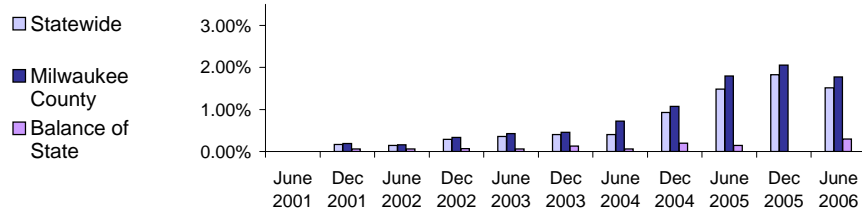
Source: CARES, Bureau of Workforce Information, Division of Workforce Solutions, Department of Workforce Development.

*Note: Extensions can be granted after 24 months of participation in a W-2T or CSJ placement. Extensions are granted when the participant is nearing the 24th month of their placement clock and they qualify for extended eligibility by meeting specific required criteria.

*Note: Participants may be counted more than once if the participant's extension lasts longer than six months. Ongoing Extensions are an end of the month count.

Extensions Granted for 60 Month Clocks*

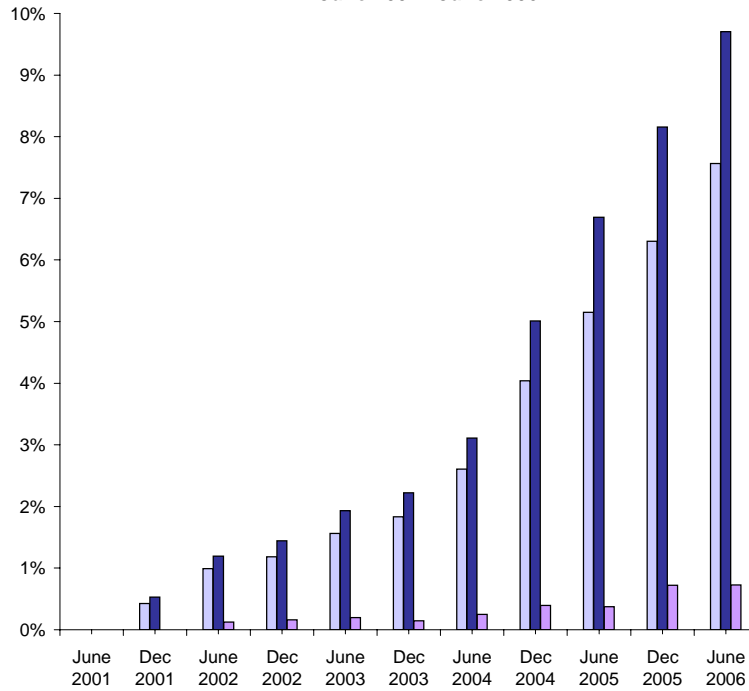
Percent of Participants with Beginning Extensions June 2001 - June 2006



Number of Beginning Extensions - Most Recent Six Months

	Jan 2006	Feb 2006	Mar 2006	Apr 2006	May 2006	Jun 2006
Milwaukee County	84	108	122	118	105	113
Balance of State	3	2	2	3	1	4
Statewide	87	110	124	121	106	117

Percent of Participants with Ongoing Extensions June 2001 - June 2006



Number of Ongoing Extensions - Most Recent Six Months

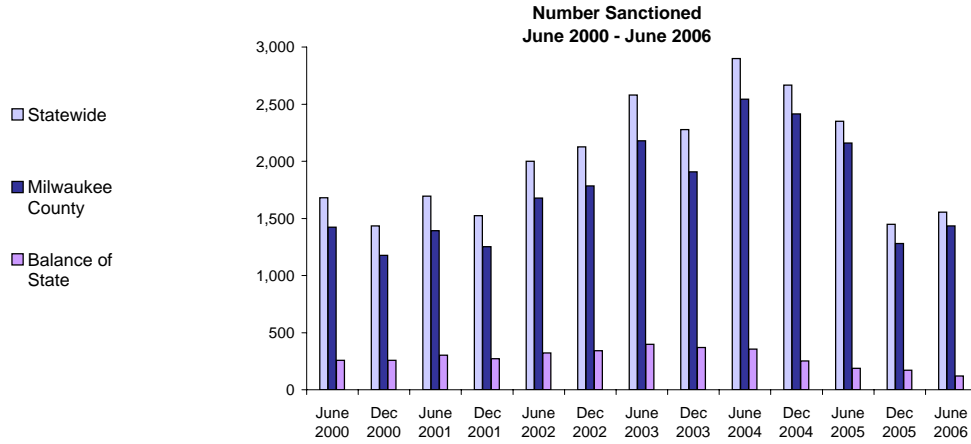
	Jan 2006	Feb 2006	Mar 2006	Apr 2006	May 2006	Jun 2006
Milwaukee County	416	429	464	481	471	469
Balance of State	13	12	11	14	7	11
Statewide	429	441	475	495	478	480

Source: CARES, Bureau of Workforce Information, Division of Workforce Solutions, Department of Workforce Development.

*Note: Extensions can be granted after 60 months of lifetime participation. Extensions are granted when the participant is nearing the 60th month of their lifetime clock and they qualify for extended eligibility by meeting specific required criteria. The 60 month extensions first became relevant as of September 2001.

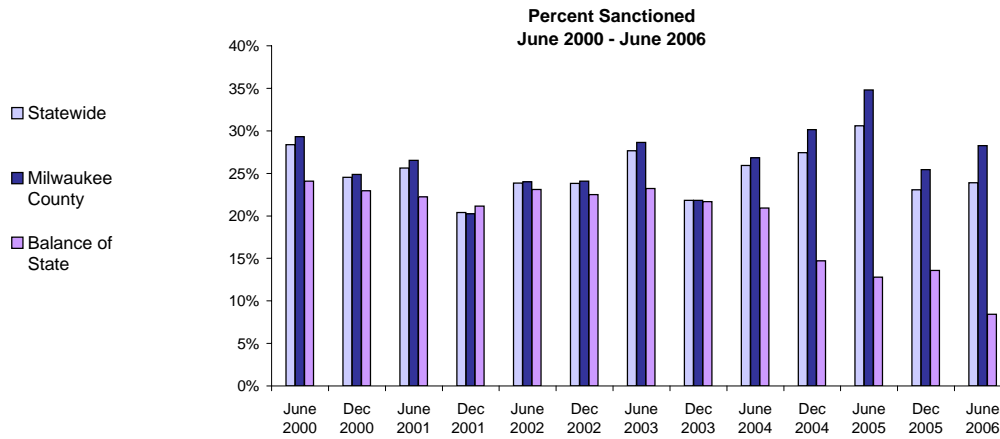
*Note: Participants may be counted more than once if the participant's extension lasts longer than six months. Ongoing Extensions are an end of the month count.

W-2T and CSJ Participants Who Were Sanctioned*



Number Sanctioned - Most Recent Six Months

	Jan 2006	Feb 2006	Mar 2006	Apr 2006	May 2006	Jun 2006
Milwaukee County	1,064	1,253	1,205	1,284	1,302	1,433
Balance of State	128	126	124	116	127	121
Statewide	1,192	1,379	1,329	1,400	1,429	1,554



Percent Sanctioned - Most Recent Six Months

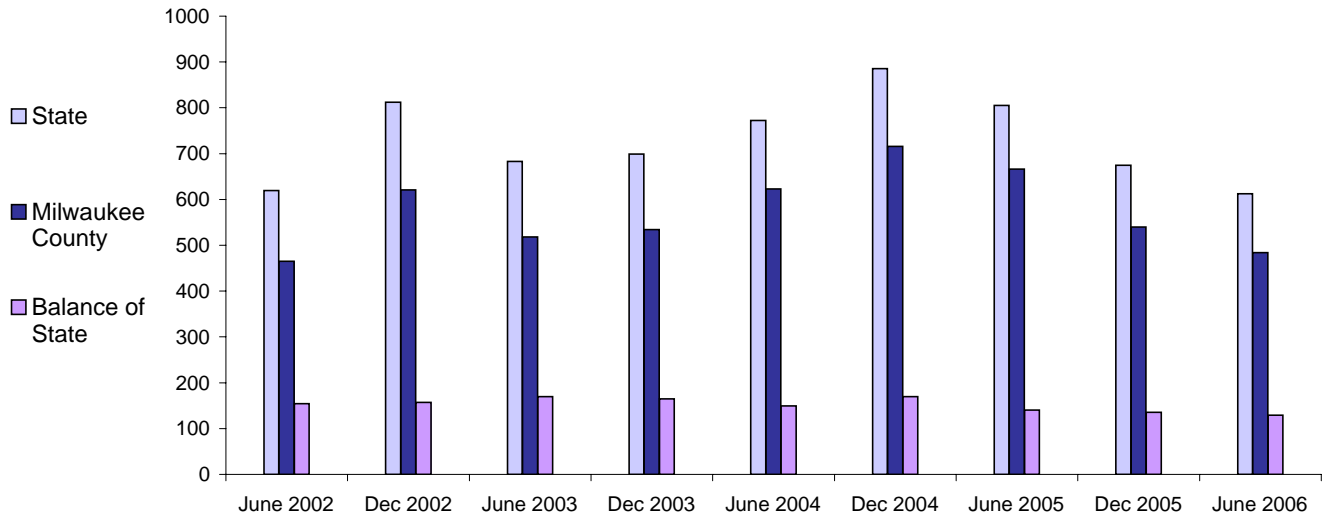
	Jan 2006	Feb 2006	Mar 2006	Apr 2006	May 2006	Jun 2006
Milwaukee County	22%	26%	25%	27%	27%	28%
Balance of State	11%	10%	11%	10%	11%	11%
Statewide	20%	23%	22%	24%	24%	25%

Source: CARES, Bureau of Workforce Information, Division of Workforce Solutions, Department of Workforce Development.

* Note: Because sanction counts prior to September 1999 were counted differently they are not included in these graphs. The graphs on this page report information on the sanctionable population (W-2T and CSJ placements only). The data represented here are point in time during a month.

W-2 Participants Entered Employment

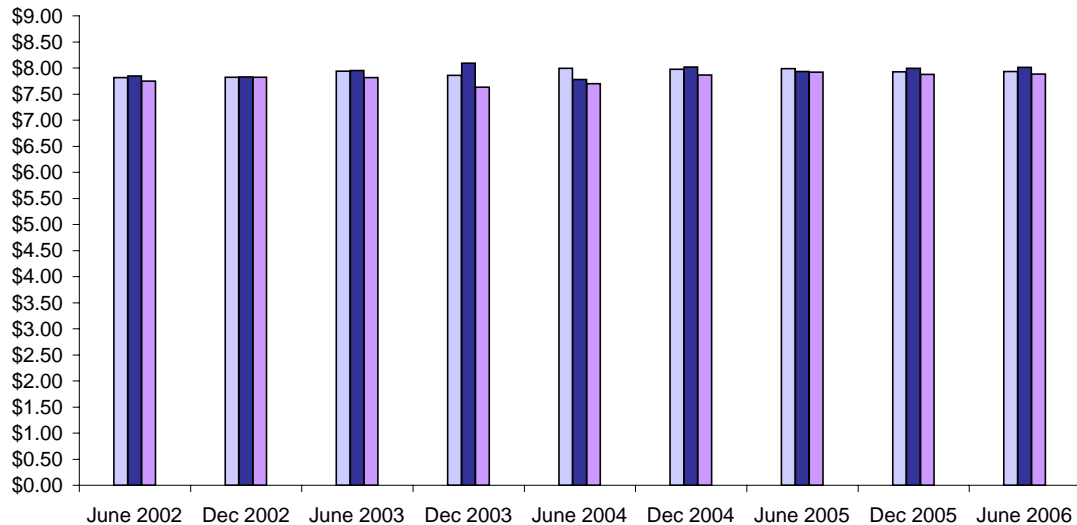
Average Number Entered Employment* June 2002-June 2006



Total Number Entered Employment - Most Recent Six Months

	Jan 2006	Feb 2006	Mar 2006	Apr 2006	May 2006	Jun 2006
Milwaukee County	196	176	259	248	303	332
Balance of State	88	64	102	88	120	81
Statewide	284	240	361	336	423	413

Average Hourly Wage* June 2002 - June 2006



Average Hourly Wage - Most Recent Six Months

	Jan 2006	Feb 2006	Mar 2006	Apr 2006	May 2006	Jun 2006
Milwaukee County	\$ 8.07	\$ 7.96	\$ 7.95	\$ 8.15	\$ 8.02	\$ 8.04
Balance of State	\$ 7.97	\$ 8.55	\$ 8.11	\$ 8.15	\$ 7.82	\$ 8.33
Statewide	\$ 7.96	\$ 8.14	\$ 8.05	\$ 8.06	\$ 8.02	\$ 8.03

Source: CARES, Bureau of Workforce Information, Division of Workforce Solutions, Department of Workforce Development.

* Note: Entered Employment is a W-2 program performance measure counted when a participant obtains or increases wages in a new job. Entered Employment for less than 30 days are excluded. Wage data are for jobs with hourly wages.