

Wisconsin W-2 Participants in Paid Placements*

Number of Participants in Paid Placements					
	One Year Ago	Last Month	This Month	Change in Most Recent Two Months	
	Mar 2005	Feb 2006	Mar 2006	Number	Percent
Paid Participants:					
Milwaukee County	7,589	5,400	5,416	16	0.3%
Balance of State	2,300	1,949	1,912	-37	-1.9%
Statewide Caseload	9,889	7,349	7,328	-21	-0.3%
Milwaukee County Regions:					
Milwaukee NE YWCA	1,134	620	628	8	1.3%
Milwaukee SE UMOS	955	1,013	1,076	63	5.9%
Region 3	95	0	0	0	0.0%
Milwaukee Central UMOS	2,141	1,320	1,334	14	1.0%
Milwaukee NW MAXIMUS	1,935	1,403	1,379	-24	-1.7%
Milwaukee SW MAXIMUS	1,327	1,038	998	-40	-4.0%
Milwaukee County Total*:	7,589	5,400	5,416	16	0.3%

Source: CARES, Bureau of Workforce Information, Division of Workforce Solutions, Department of Workforce Development.

* Milwaukee County total includes a small number of cases served by Milwaukee County Department of Social Services.

Note: The paid caseload includes the following categories of placements:

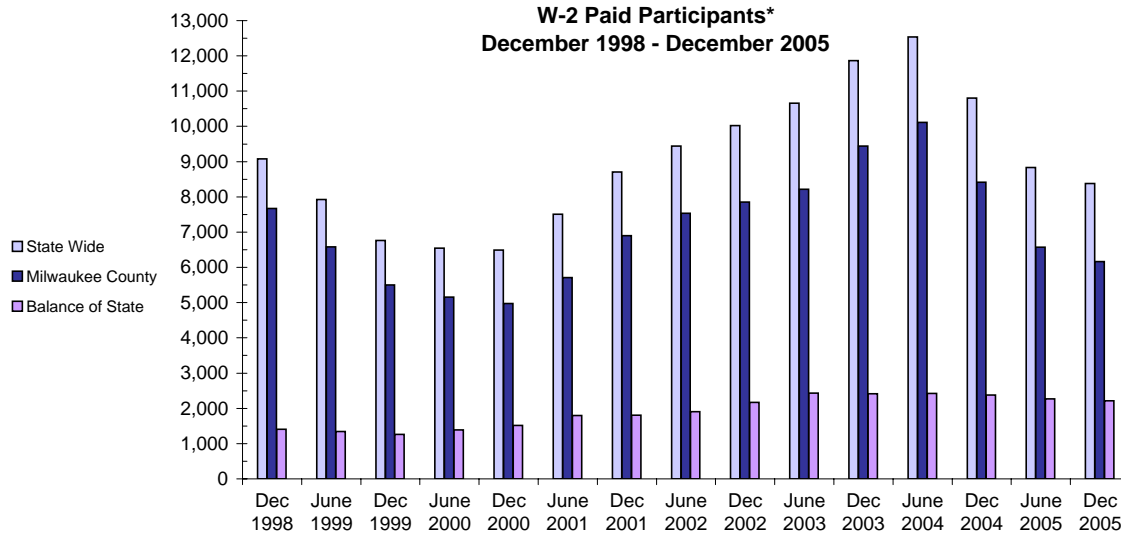
W-2 Transition (W-2T)..... A W-2 work-readiness practice placement for individuals who are unable to perform independent, self-sustaining work, but who are able to participate in work practice or other developmental activities and training up to their abilities.

Community Service Job (CSJ)..... A W-2 work-readiness practice placement designed to improve the employability of participants by providing work experience and training in the public and private sectors.

Trial Job (TJB)..... A W-2 subsidized employment position that provides work experience and training which may become permanent, unsubsidized employment. Paid directly to the employer.

Case Mgmt- Caretaker of Newborn ((A custodial parent of a child who is 12 weeks old or less and who meets the financial and non-financial eligibility requirements for W-2 employment positions.

W-2 Paid Participants and Benefits Paid

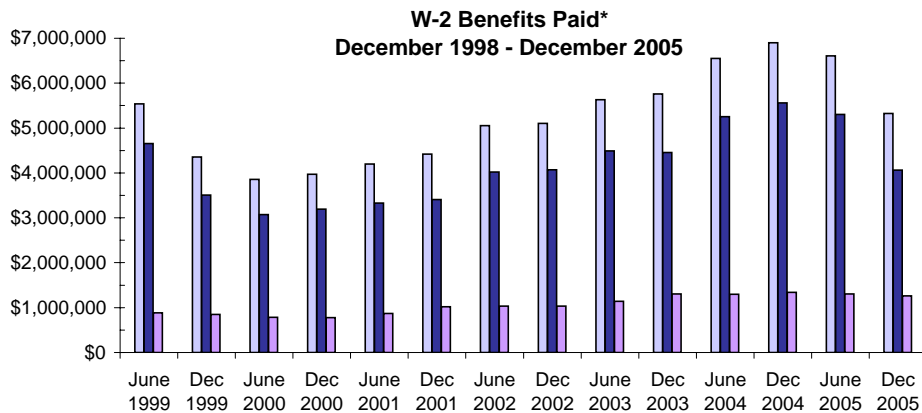


W-2 Paid Participants - Most Recent Six Months

	Oct 2005	Nov 2005	Dec 2005	Jan 2006	Feb 2006	Mar 2006
Milwaukee County	5,816	5,692	5,565	5,481	5,400	5,416
Balance of State	2,134	2,103	2,025	2,021	1,949	1,912
Statewide	7,950	7,795	7,590	7,502	7,349	7,328

Source: CARES, Bureau of Workforce Information, Division of Workforce Solutions, Department of Workforce Development

*Note: The paid participants included in this count are participants who were in a paid placement during the report month.



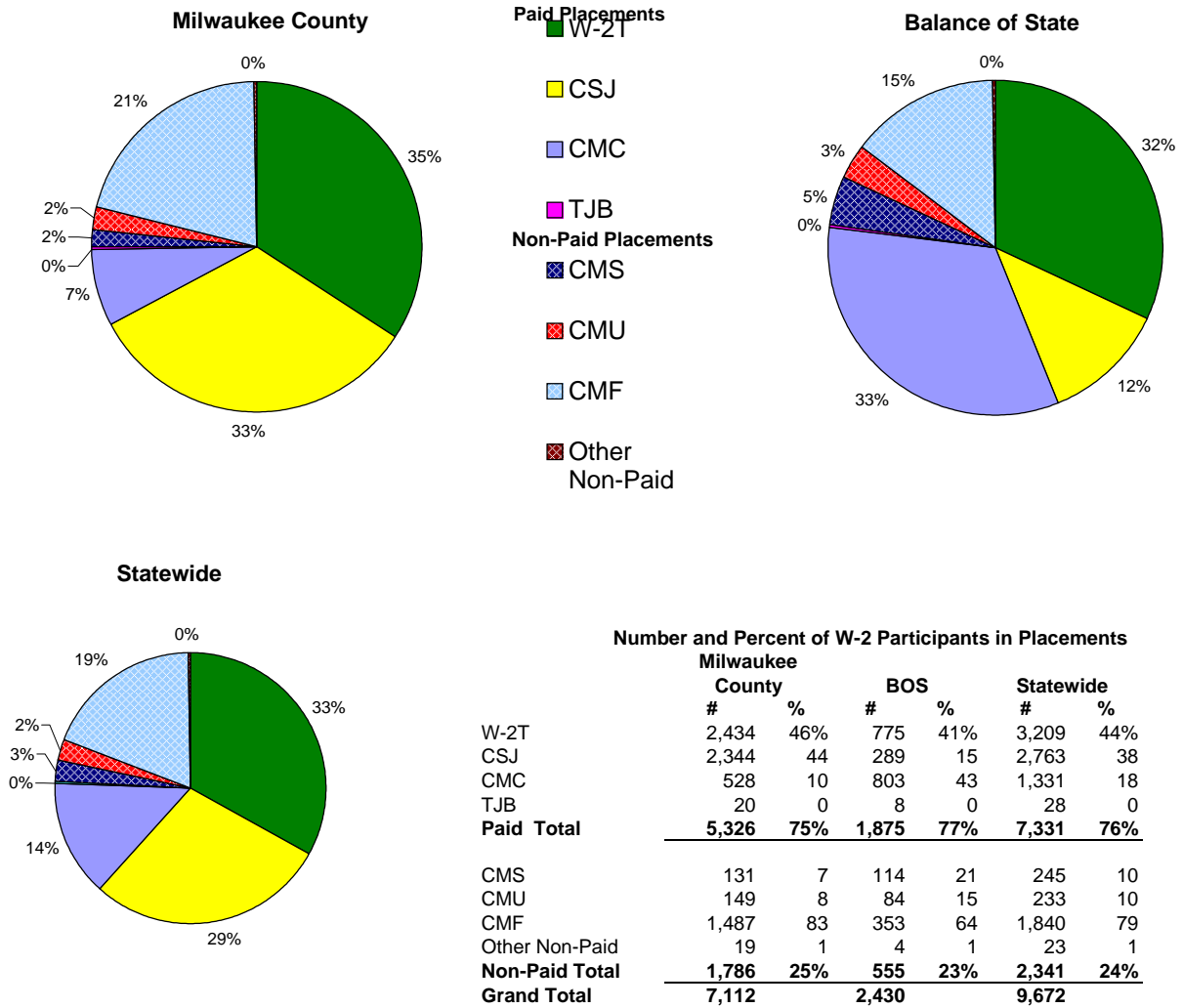
W-2 Benefits Paid - Most Recent Six Months

	Oct 2005	Nov 2005	Dec 2005	Jan 2006	Feb 2006	Mar 2006
Milwaukee County	\$ 3,242,828	\$ 3,266,441	\$ 3,219,294	\$ 3,244,531	\$ 3,262,089	\$ 3,227,677
Balance of State	1,159,289	1,164,661	1,173,072	1,130,288	1,106,703	1,061,396
Statewide	\$4,402,117	\$4,431,102	\$4,392,366	\$4,374,819	\$4,368,792	\$4,289,073

Source: CARES, Bureau of Workforce Information, Division of Workforce Solutions, Department of Workforce Development

*Note: The benefits paid are the total monthly net benefits after sanctions and recoupments are applied.

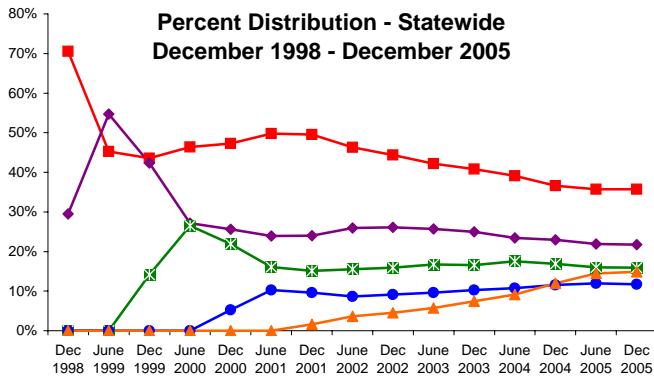
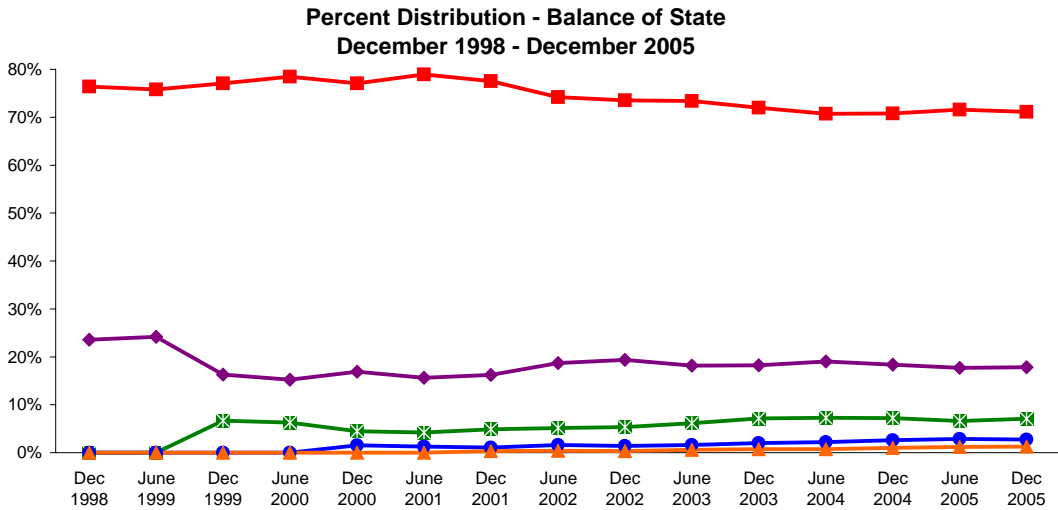
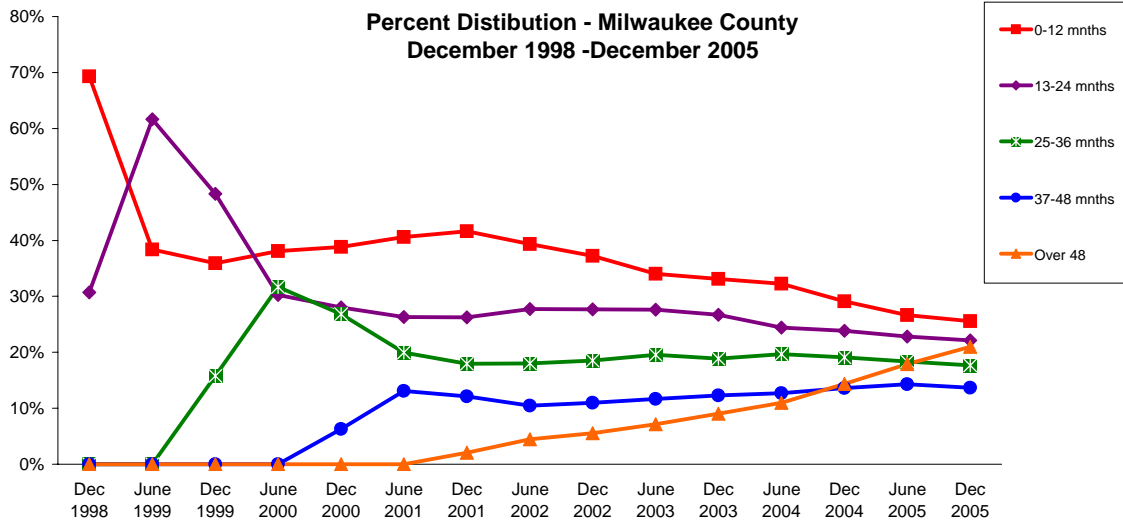
Placement of W-2 Participants, March 2006



Source: CARES, Bureau of Workforce Information, Division of Workforce Solutions, Department of Workforce Development.

- * Note:
- W-2 Transition (W-2T)..... A W-2 work-readiness practice placement for individuals who are unable to perform independent, self-sustaining work, but who are able to participate in work practice or other developmental activities and training up to their abilities.
 - Community Service Job (CSJ)..... A W-2 work-readiness practice placement designed to improve the employability of participants by providing work experience and training in the public and private sectors.
 - Trial Job (TJB)..... A W-2 subsidized employment position that provides work experience and training which may become permanent, unsubsidized employment. Paid directly to the employer.
 - Case Mgmt - Caretaker of a Newborn (CMC)..... A custodial parent of a child who is 12 weeks old or less and who meets the financial and non-financial eligibility requirements for W-2 employment positions.
 - Case Mgmt - Pregnancy (CMP)..... A participant with a medically verified pregnancy.
 - Case Mgmt - Service for Job Ready (CMS)..... Used for case management services for unemployed individuals who have been assessed as having the capability of obtaining immediate full-time employment.
 - Case Mgmt Follow-up (CMF)..... Used for case management services for participants who have moved up the W-2 ladder to unsubsidized employment.
 - Case Mgmt - Service for Working (CMU)..... Used for individuals working in unsubsidized employment who are without barriers to full-time employment.
 - Case Mgmt - Non-Custodial Parent (CMN)..... Used for case management services for non-custodial parents.
 - Case Mgmt - Minor Parent (CMM)..... Used for case management services for a custodial minor parent.

Number of Months Served in W-2*



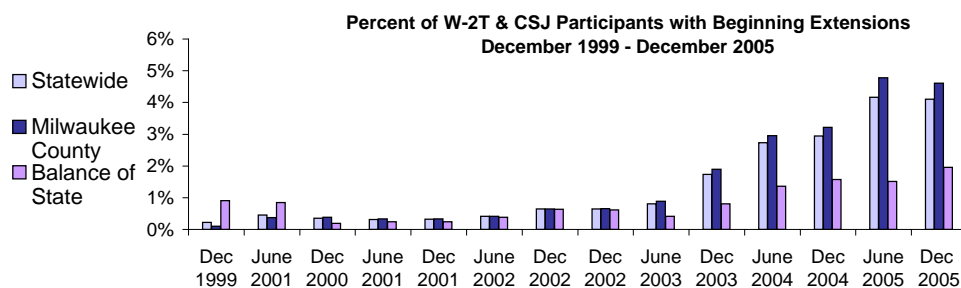
		Number of Months Served in W-2 - Most Recent Six Months						
		Months	Oct 2005	Nov 2005	Dec 2005	Jan 2006	Feb 2006	Mar 2006
Milwaukee County	0-12		2311	2275	2202	2142	2127	2175
	13-24		1872	1783	1635	1508	1488	1485
	25-36		1523	1435	1321	1196	1165	1176
	37-48		1169	1124	1081	985	937	939
	Over 48		1656	1589	1532	1458	1468	1522
Balance of State	0-12		2008	1924	1807	1791	1753	1747
	13-24		591	614	617	587	564	555
	25-36		204	203	196	190	183	185
	37-48		83	88	88	88	93	94
	Over 48		39	46	49	44	44	46
Statewide	0-12		4046	3942	3747	3685	3644	3682
	13-24		2416	2356	2224	2056	2007	1993
	25-36		1743	1649	1525	1396	1356	1372
	37-48		1258	1221	1172	1077	1031	1037
	Over 48		1713	1648	1595	1516	1531	1585

Source: CARES, Bureau of Workforce Information, Division of Workforce Solutions, Department of Workforce Development.

*Note: Length of stay is determined for the W-2 participants in the report month by the number of total months a participant has been in W-2 since the beginning of the program.

*Note: Participants may be counted more than once if their geographic location changes from Milwaukee to Balance of State or vice versa.

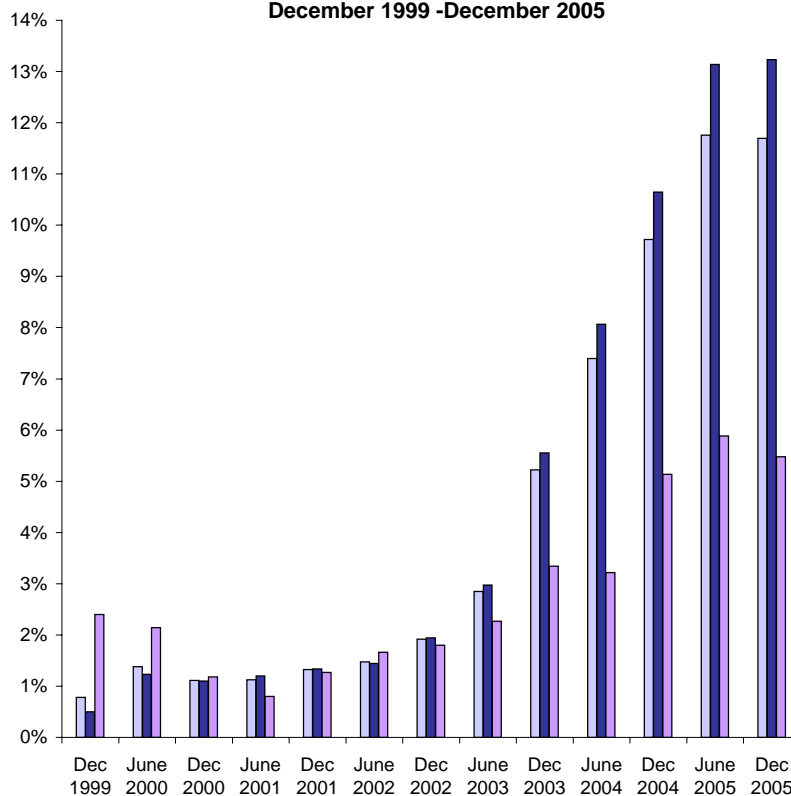
Extensions Granted for 24 Month Clocks*



Number of Beginning Extensions - Most Recent Six Months

	Oct 2005	Nov 2005	Dec 2005	Jan 2006	Feb 2006	Mar 2006
Milwaukee County	244	244	178	191	211	200
Balance of State	19	24	20	22	33	29
Statewide	263	268	198	213	244	229

Percent of W-2T & CSJ Participants with Ongoing Extensions December 1999 - December 2005



Number of Ongoing Extensions - Most Recent Six Months

	Oct 2005	Nov 2005	Dec 2005	Jan 2006	Feb 2006	Mar 2006
Milwaukee County	559	579	571	541	534	547
Balance of State	72	72	85	76	88	96
Statewide	631	651	656	617	622	643

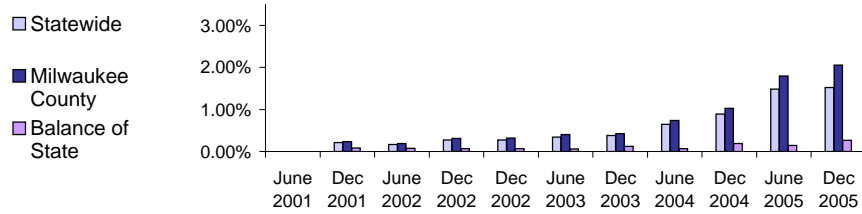
Source: CARES, Bureau of Workforce Information, Division of Workforce Solutions, Department of Workforce Development.

*Note: Extensions can be granted after 24 months of participation in a W-2T or CSJ placement. Extensions are granted when the participant is nearing the 24th month of their placement clock and they qualify for extended eligibility by meeting specific required criteria.

*Note: Participants may be counted more than once if the participant's extension lasts longer than six months. Ongoing Extensions are an end of the month count.

Extensions Granted for 60 Month Clocks*

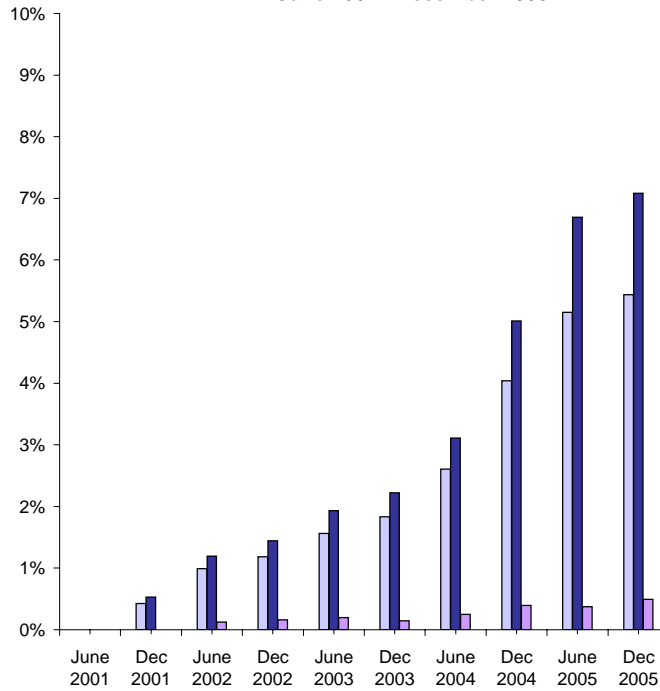
Percent of Participants with Beginning Extensions June 2001 - December 2005



Number of Beginning Extensions - Most Recent Six Months

	Oct 2005	Nov 2005	Dec 2005	Jan 2006	Feb 2006	Mar 2006
Milwaukee County	87	91	100	84	108	122
Balance of State	6	2	0	3	2	2
Statewide	93	93	100	87	110	124

Percent of Participants with Ongoing Extensions June 2001 - December 2005



Number of Ongoing Extensions - Most Recent Six Months

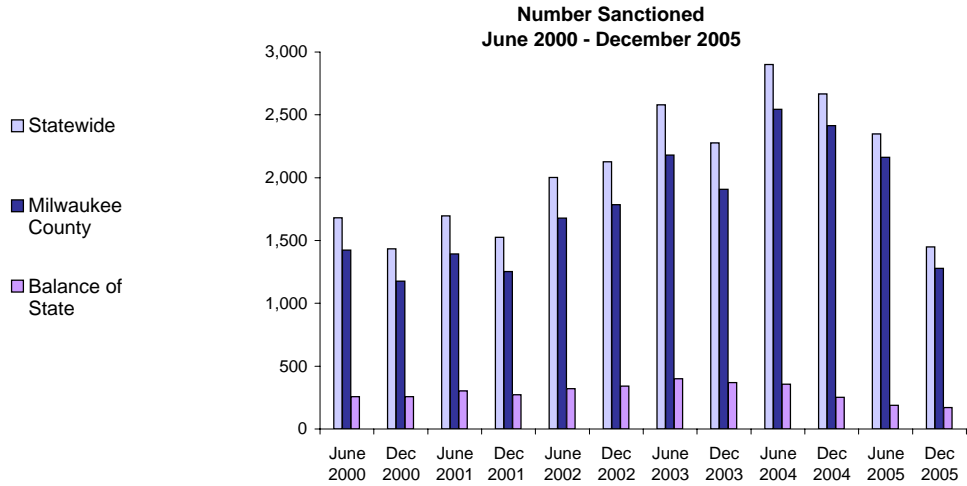
	Oct 2005	Nov 2005	Dec 2005	Jan 2006	Feb 2006	Mar 2006
Milwaukee County	410	394	408	416	429	464
Balance of State	10	11	12	13	12	11
Statewide	420	405	420	429	441	475

Source: CARES, Bureau of Workforce Information, Division of Workforce Solutions, Department of Workforce Development.

*Note: Extensions can be granted after 60 months of lifetime participation. Extensions are granted when the participant is nearing the 60th month of their lifetime clock and they qualify for extended eligibility by meeting specific required criteria. The 60 month extensions first became relevant as of September 2001.

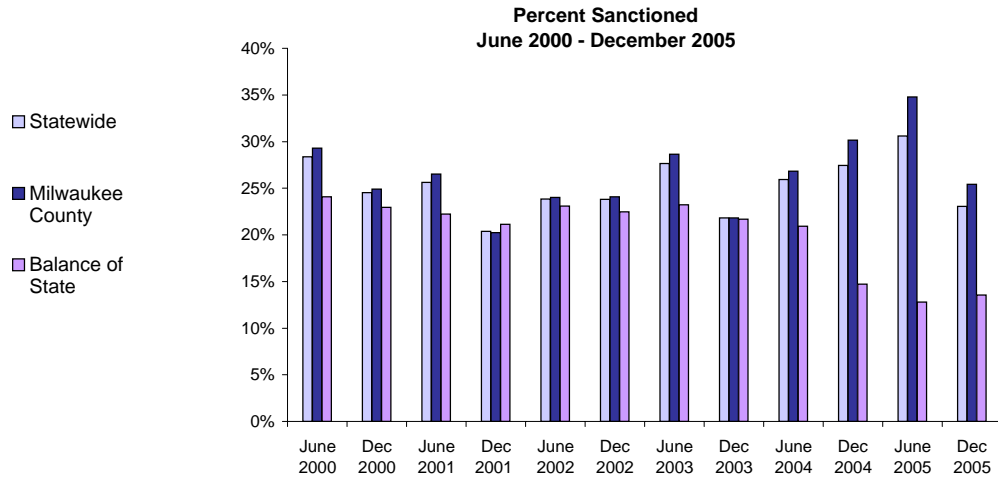
*Note: Participants may be counted more than once if the participant's extension lasts longer than six months. Ongoing Extensions are an end of the month count.

W-2T and CSJ Participants Who Were Sanctioned*



Number Sanctioned - Most Recent Six Months

	Oct 2005	Nov 2005	Dec 2005	Jan 2006	Feb 2006	Mar 2006
Milwaukee County	1,520	1,521	1,279	1,064	1,253	1,205
Balance of State	151	164	170	128	126	124
Statewide	1,671	1,685	1,449	1,192	1,379	1,329



Percent Sanctioned - Most Recent Six Months

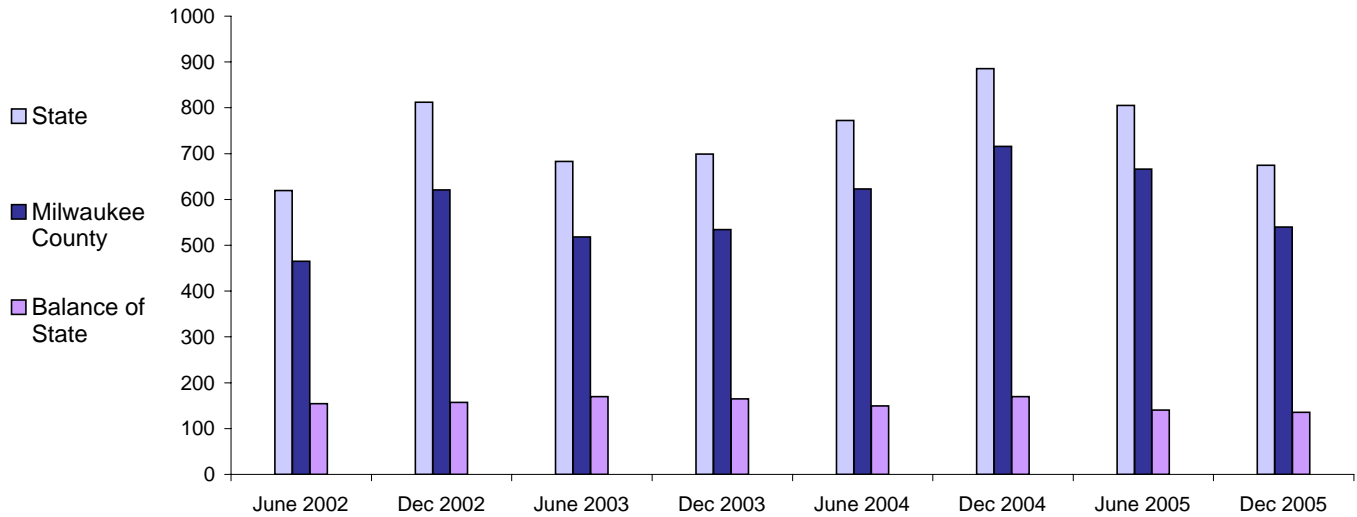
	Oct 2005	Nov 2005	Dec 2005	Jan 2006	Feb 2006	Mar 2006
Milwaukee County	29%	29%	25%	22%	26%	25%
Balance of State	11	12	14	11	10	11
Statewide	25%	26%	23%	20%	23%	22%

Source: CARES, Bureau of Workforce Information, Division of Workforce Solutions, Department of Workforce Development.

* Note: Because sanction counts prior to September 1999 were counted differently they are not included in these graphs. The graphs on this page report information on the sanctionable population (W-2T and CSJ placements only). The data represented here are point in time during a month.

W-2 Participants Entered Employment

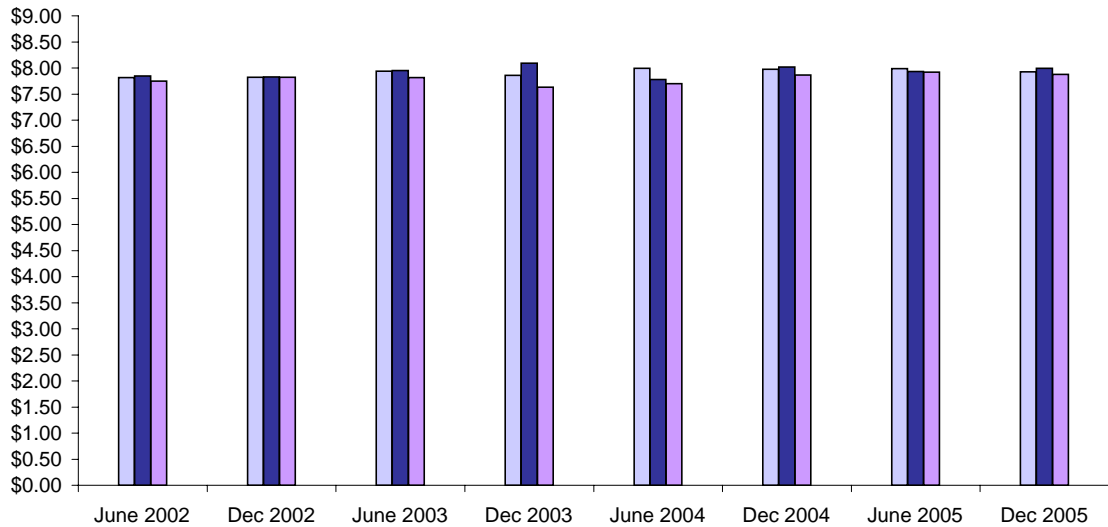
Average Number Entered Employment*
June 2002-December 2005



Total Number Entered Employment - Most Recent Six Months

	Oct 2005	Nov 2005	Dec 2005	Jan 2006	Feb 2006	Mar 2006
Milwaukee County	566	465	291	196	176	259
Balance of State	152	109	89	88	64	102
Statewide	718	574	380	284	240	361

Average Hourly Wage*
June 2002 - December 2005



Average Hourly Wage - Most Recent Six Months

	Oct 2005	Nov 2005	Dec 2005	Jan 2006	Feb 2006	Mar 2006
Milwaukee County	\$ 8.20	\$ 8.01	\$ 7.84	\$ 8.07	\$ 7.96	\$ 7.95
Balance of State	\$ 7.84	\$ 7.83	\$ 8.06	\$ 7.97	\$ 8.55	\$ 8.11
Statewide	\$ 7.93	\$ 7.95	\$ 7.95	\$ 7.96	\$ 8.14	\$ 8.05

Source: CARES, Bureau of Workforce Information, Division of Workforce Solutions, Department of Workforce Development.

* Note: Entered Employment is a W-2 program performance measure counted when a participant obtains or increases wages in a new job. Entered Employment for less than 30 days are excluded. Wage data are for jobs with hourly wages.