



## Wisconsin W-2 Participants in Paid Placements\*

### Number of Participants in Paid Placements

	One Year	Last Month	This Month	Change in Most Recent	
	Ago			Two Months	
<b>Paid Participants:</b>	<b>Dec 2004</b>	<b>Nov 2005</b>	<b>Dec 2005</b>	<b>Number</b>	<b>Percent</b>
Milwaukee County	8,418	5,692	5,565	-127	-2.3%
Balance of State	2,382	2,103	2,025	-78	-3.9%
Statewide Caseload	10,800	7,795	7,590	-205	-2.7%
<b>Milwaukee County Regions:</b>	<b>Dec 2004</b>	<b>Nov 2005</b>	<b>Dec 2005</b>	<b>Number</b>	<b>Percent</b>
Region 1	772	769	716	-53	-7.4%
Region 2	1,002	785	780	-5	-0.6%
Region 3	1,847	0	0	0	0.0%
Region 4	1,789	1,474	1,358	-116	-8.5%
Region 5	1,609	1,497	1,536	39	2.5%
Region 6	1,397	1,161	1,172	11	0.9%
<b>Milwaukee County Total*:</b>	<b>8,418</b>	<b>5,692</b>	<b>5,565</b>	<b>-127</b>	<b>-2.3%</b>

Source: CARES, Bureau of Workforce Information, Division of Workforce Solutions, Department of Workforce Development.

\* Milwaukee County total includes a small number of cases served by Milwaukee County Department of Social Services.

Note: The paid caseload includes the following categories of placements:

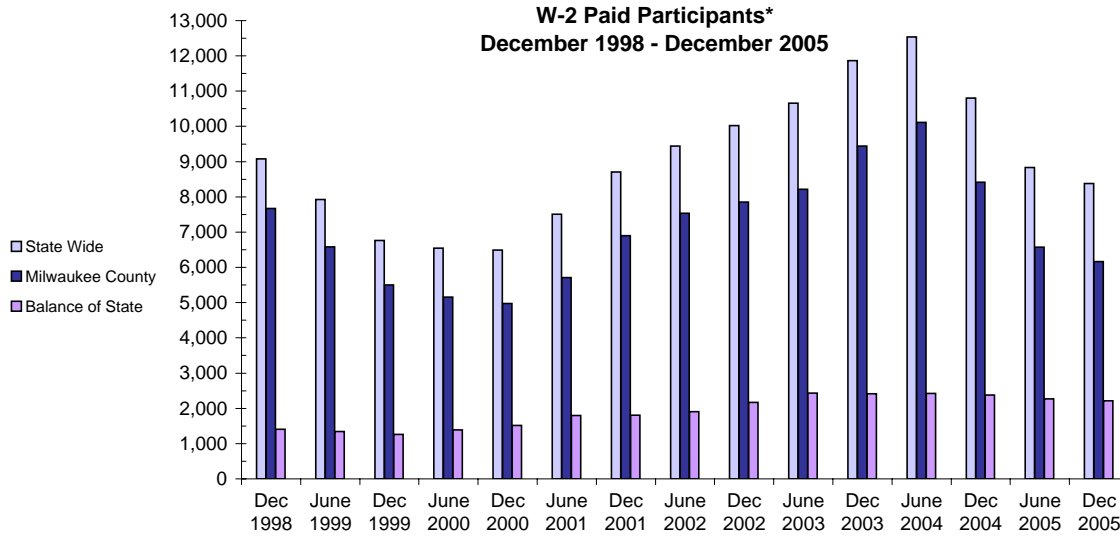
W-2 Transition (W-2T)..... A W-2 work-readiness practice placement for individuals who are unable to perform independent, self-sustaining work, but who are able to participate in work practice or other developmental activities and training up to their abilities.

Community Service Job (CSJ)..... A W-2 work-readiness practice placement designed to improve the employability of participants by providing work experience and training in the public and private sectors.

Trial Job (TJB)..... A W-2 subsidized employment position that provides work experience and training which may become permanent, unsubsidized employment. Paid directly to the employer.

Case Mgmt- Caretaker of Newborn A custodial parent of a child who is 12 weeks old or less and who meets the financial and non-financial eligibility requirements for W-2 employment positions.

## W-2 Paid Participants and Benefits Paid

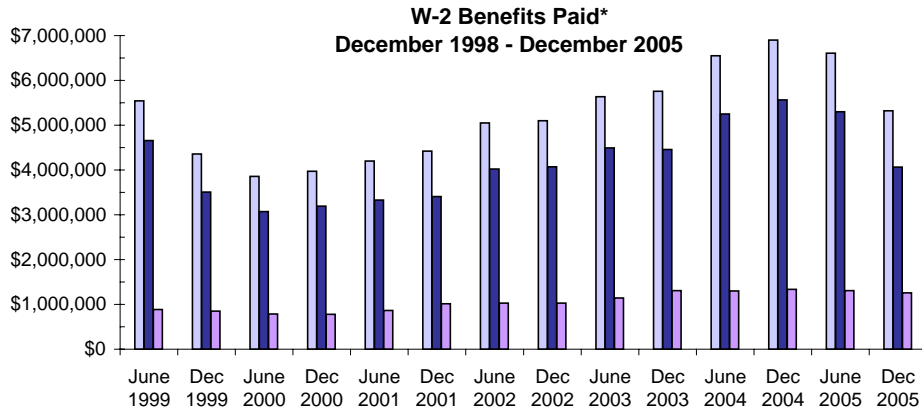


### W-2 Paid Participants - Most Recent Six Months

	July 2005	Aug 2005	Sep 2005	Oct 2005	Nov 2005	Dec 2005
<b>Milwaukee County</b>	6,166	5,902	5,760	5,816	5,692	5,565
<b>Balance of State</b>	2,216	2,160	2,121	2,134	2,103	2,025
<b>Statewide</b>	8,382	8,062	7,881	7,950	7,795	7,590

Source: CARES, Bureau of Workforce Information, Division of Workforce Solutions, Department of Workforce Development

\*Note: The paid participants included in this count are participants who were in a paid placement during the report month.



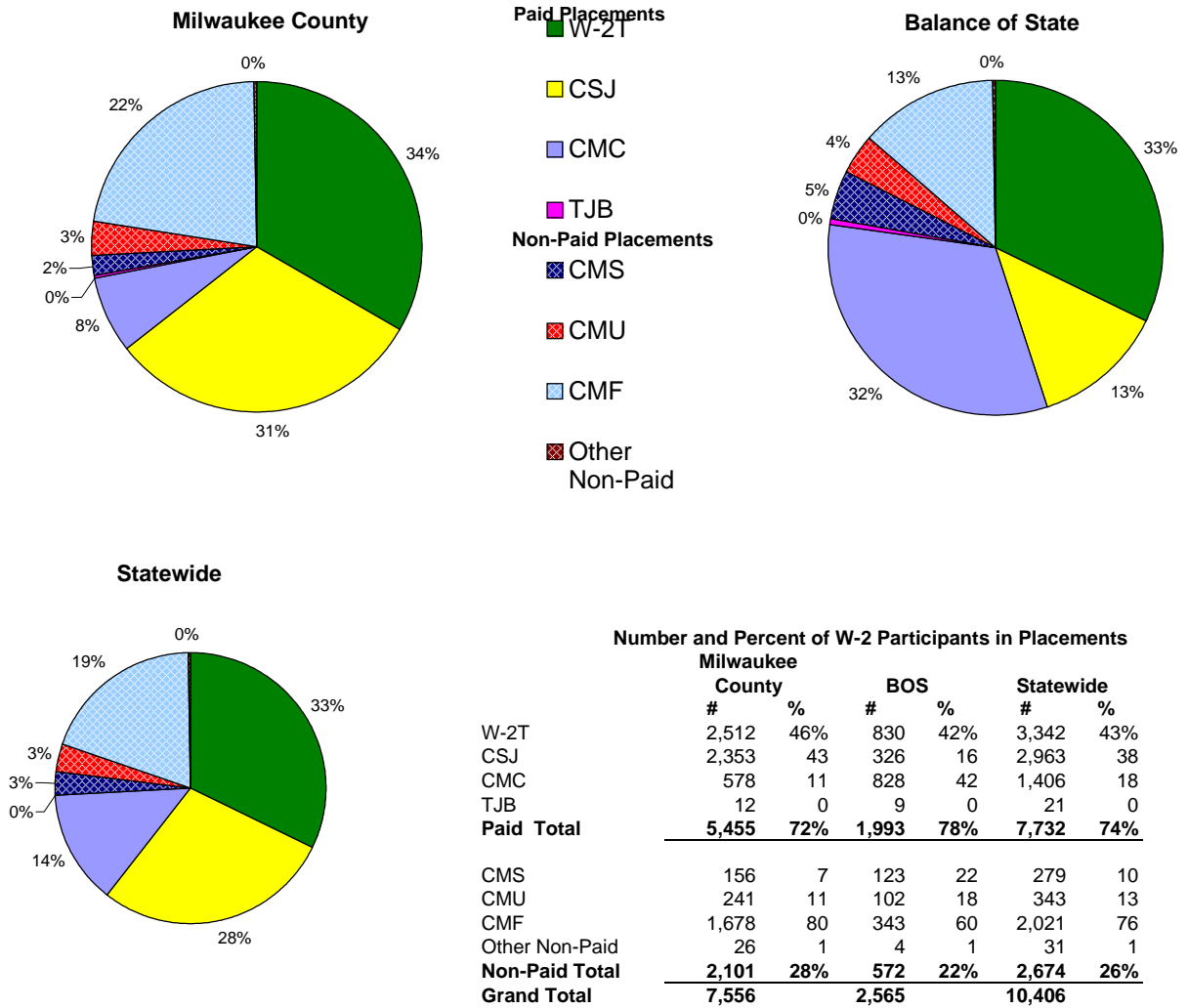
### W-2 Benefits Paid - Most Recent Six Months

	July 2005	Aug 2005	Sep 2005	Oct 2005	Nov 2005	Dec 2005
<b>Milwaukee County</b> \$	3,731,361	3,518,617	3,382,723	3,242,828	3,266,441	3,219,294
<b>Balance of State</b>	1,216,372	1,218,858	1,219,162	1,159,289	1,164,661	1,173,072
<b>Statewide</b>	\$4,947,733	\$4,737,475	\$4,601,885	\$4,402,117	\$4,431,102	\$4,392,366

Source: CARES, Bureau of Workforce Information, Division of Workforce Solutions, Department of Workforce Development

\*Note: The benefits paid are the total monthly net benefits after sanctions and recoupments are applied.

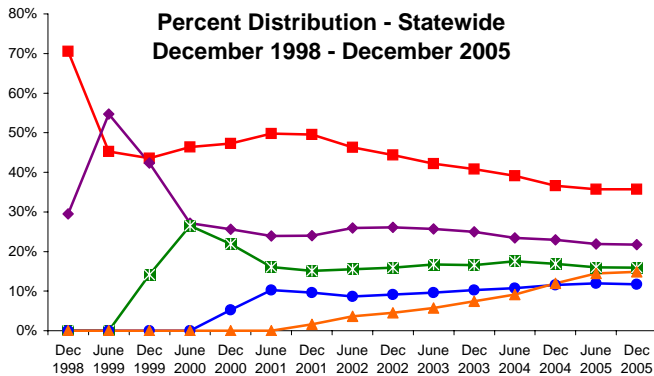
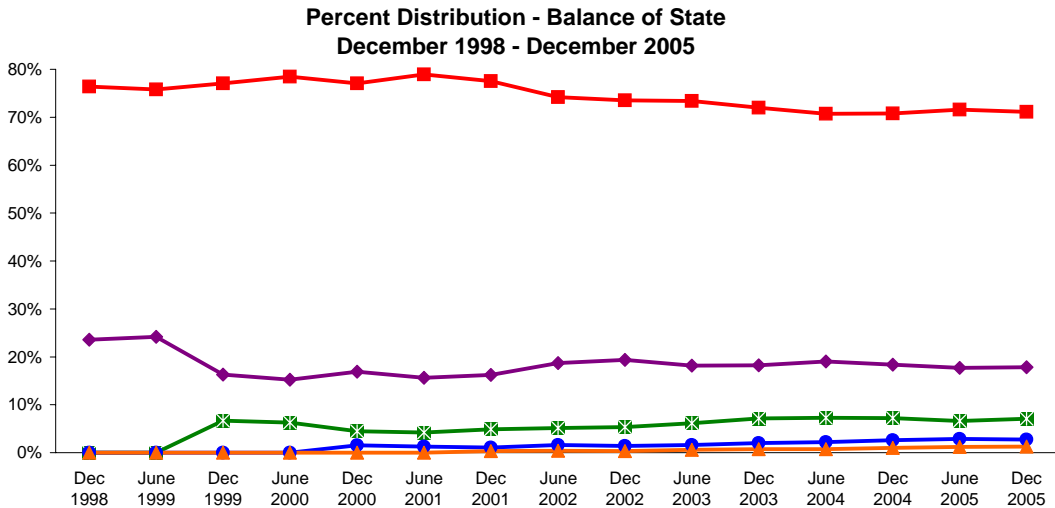
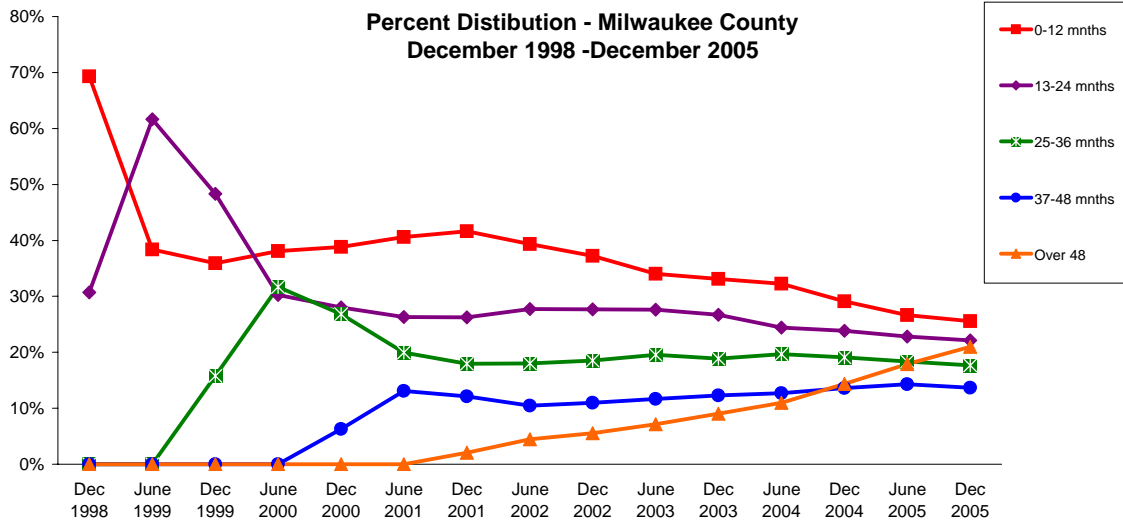
## Placement of W-2 Participants, December 2005



Source: CARES, Bureau of Workforce Information, Division of Workforce Solutions, Department of Workforce Development.

- \* Note:
- W-2 Transition (W-2T)..... A W-2 work-readiness practice placement for individuals who are unable to perform independent, self-sustaining work, but who are able to participate in work practice or other developmental activities and training up to their abilities.
  - Community Service Job (CSJ)..... A W-2 work-readiness practice placement designed to improve the employability of participants by providing work experience and training in the public and private sectors.
  - Trial Job (TJB)..... A W-2 subsidized employment position that provides work experience and training which may become permanent, unsubsidized employment. Paid directly to the employer.
  - Case Mgmt - Caretaker of a Newborn (CMC)..... A custodial parent of a child who is 12 weeks old or less and who meets the financial and non-financial eligibility requirements for W-2 employment positions.
  - Case Mgmt - Pregnancy (CMP)..... A participant with a medically verified pregnancy.
  - Case Mgmt - Service for Job Ready (CMS)..... Used for case management services for unemployed individuals who have been assessed as having the capability of obtaining immediate full-time employment.
  - Case Mgmt Follow-up (CMF)..... Used for case management services for participants who have moved up the W-2 ladder to unsubsidized employment.
  - Case Mgmt - Service for Working (CMU)..... Used for individuals working in unsubsidized employment who are without barriers to full-time employment.
  - Case Mgmt - Non-Custodial Parent (CMN)..... Used for case management services for non-custodial parents.
  - Case Mgmt - Minor Parent (CMM)..... Used for case management services for a custodial minor parent.

### Number of Months Served in W-2\*



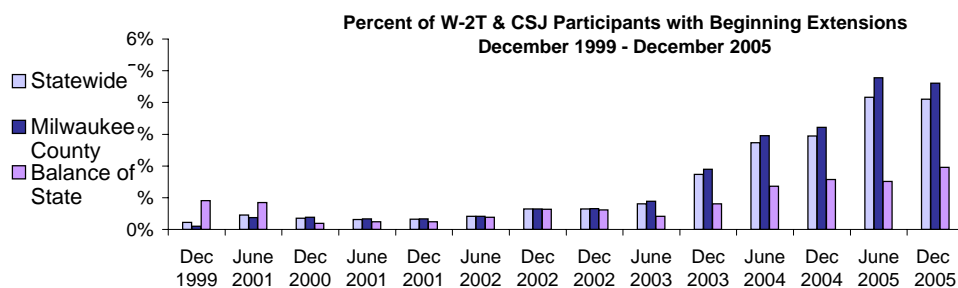
		July 2005	Aug 2005	Sep 2005	Oct 2005	Nov 2005	Dec 2005
<b>Milwaukee County</b>	0-12	2428	2353	2285	2311	2275	2202
	13-24	2103	2025	1919	1872	1783	1635
	25-36	1679	1650	1586	1523	1435	1321
	37-48	1300	1267	1227	1169	1124	1081
	Over 48	1997	1695	1667	1656	1589	1532
<b>Balance of State</b>	0-12	2084	2066	1999	2008	1924	1807
	13-24	523	530	567	591	614	617
	25-36	207	210	210	204	203	196
	37-48	80	76	80	83	88	88
	Over 48	37	39	41	39	46	49
<b>Statewide</b>	0-12	4238	4146	4020	4046	3942	3747
	13-24	2578	2502	2431	2416	2356	2224
	25-36	1891	1867	1812	1743	1649	1525
	37-48	1386	1355	1309	1258	1221	1172
	Over 48	1760	1757	1733	1713	1648	1595

Source: CARES, Bureau of Workforce Information, Division of Workforce Solutions, Department of Workforce Development.

\*Note: Length of stay is determined for the W-2 participants in the report month by the number of total months a participant has been in W-2 since the beginning of the program.

\*Note: Participants may be counted more than once if their geographic location changes from Milwaukee to Balance of State or vice versa.

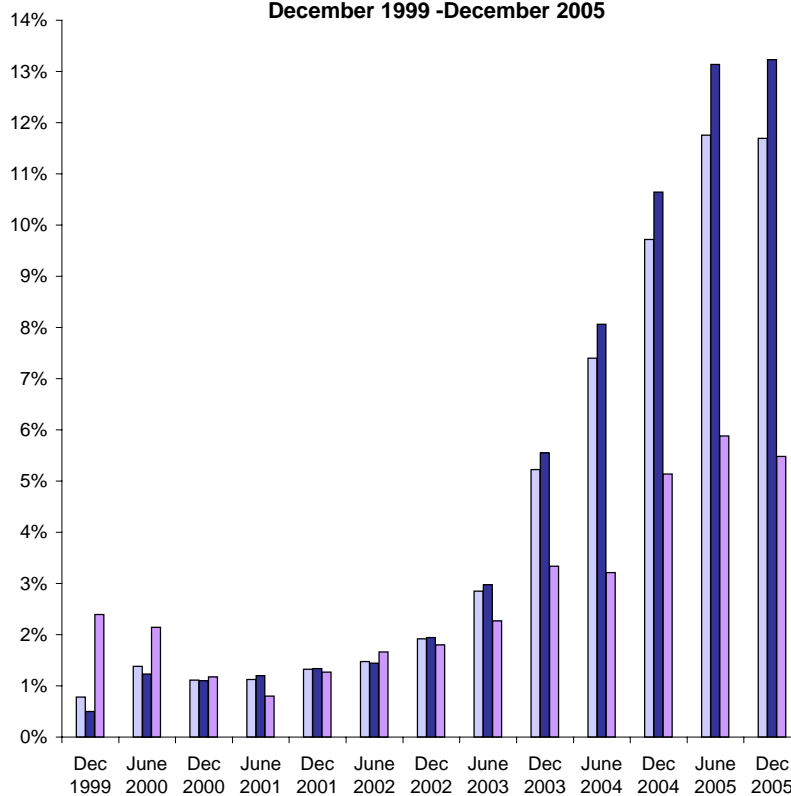
## Extensions Granted for 24 Month Clocks\*



### Number of Beginning Extensions - Most Recent Six Months

	July 2005	Aug 2005	Sep 2005	Oct 2005	Nov 2005	Dec 2005
<b>Milwaukee County</b>	224	230	233	244	244	178
<b>Balance of State</b>	22	28	31	19	24	20
<b>Statewide</b>	246	258	264	263	268	198

### Percent of W-2T & CSJ Participants with Ongoing Extensions December 1999 - December 2005



### Number of Ongoing Extensions - Most Recent Six Months

	Jul-2005	Aug-2005	Sep-2005	Oct-2005	Nov-2005	Dec-2005
<b>Milwaukee County</b>	654	594	568	559	579	571
<b>Balance of State</b>	67	65	73	72	72	85
<b>Statewide</b>	721	659	641	631	651	656

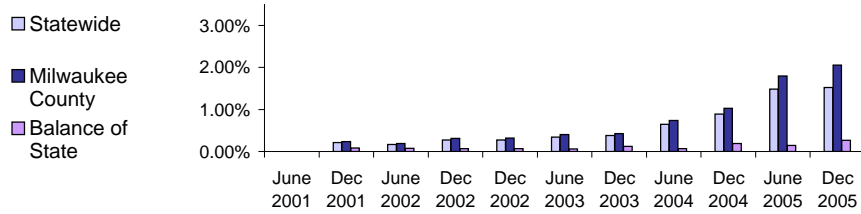
Source: CARES, Bureau of Workforce Information, Division of Workforce Solutions, Department of Workforce Development.

\*Note: Extensions can be granted after 24 months of participation in a W-2T or CSJ placement. Extensions are granted when the participant is nearing the 24th month of their placement clock and they qualify for extended eligibility by meeting specific required criteria.

\*Note: Participants may be counted more than once if the participant's extension lasts longer than six months. Ongoing Extensions are an end of the month count.

## Extensions Granted for 60 Month Clocks\*

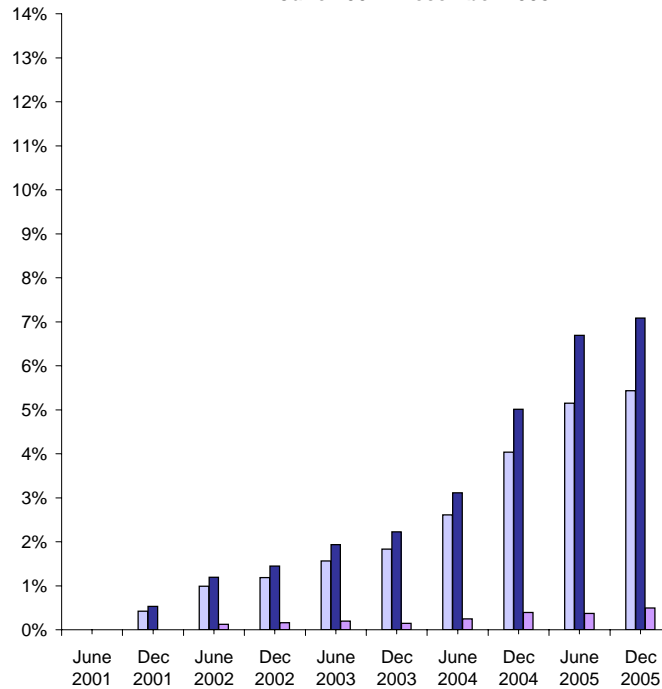
### Percent of Participants with Beginning Extensions June 2001 - December 2005



### Number of Beginning Extensions - Most Recent Six Months

	July 2005	Aug 2005	Sep 2005	Oct 2005	Nov 2005	Dec 2005
<b>Milwaukee County</b>	88	87	97	87	91	100
<b>Balance of State</b>	3	2	2	6	2	0
<b>Statewide</b>	91	89	99	93	93	100

### Percent of Participants with Ongoing Extensions June 2001 - December 2005



### Number of Ongoing Extensions - Most Recent Six Months

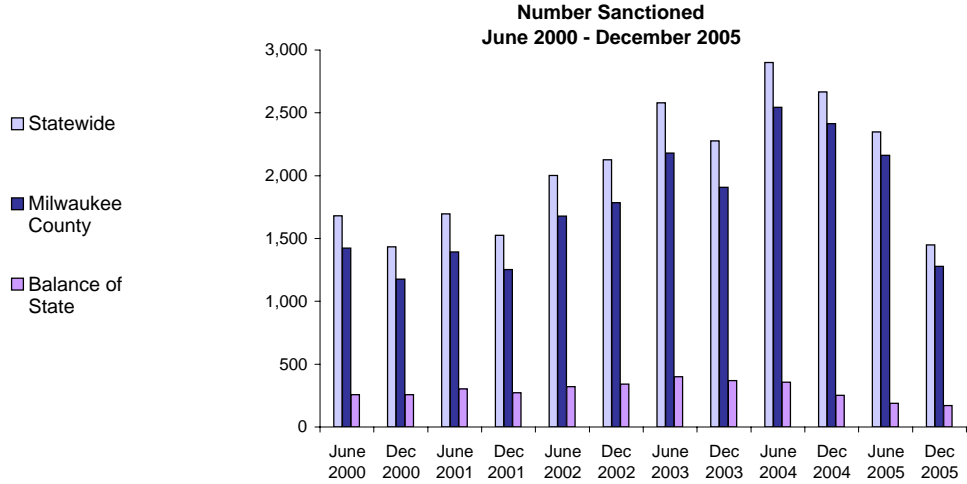
	July 2005	Aug 2005	Sep 2005	Oct 2005	Nov 2005	Dec 2005
<b>Milwaukee County</b>	387	383	404	410	394	408
<b>Balance of State</b>	9	8	9	10	11	12
<b>Statewide</b>	396	391	413	420	405	420

Source: CARES, Bureau of Workforce Information, Division of Workforce Solutions, Department of Workforce Development.

\*Note: Extensions can be granted after 60 months of lifetime participation. Extensions are granted when the participant is nearing the 60th month of their lifetime clock and they qualify for extended eligibility by meeting specific required criteria. The 60 month extensions first became relevant as of September 2001.

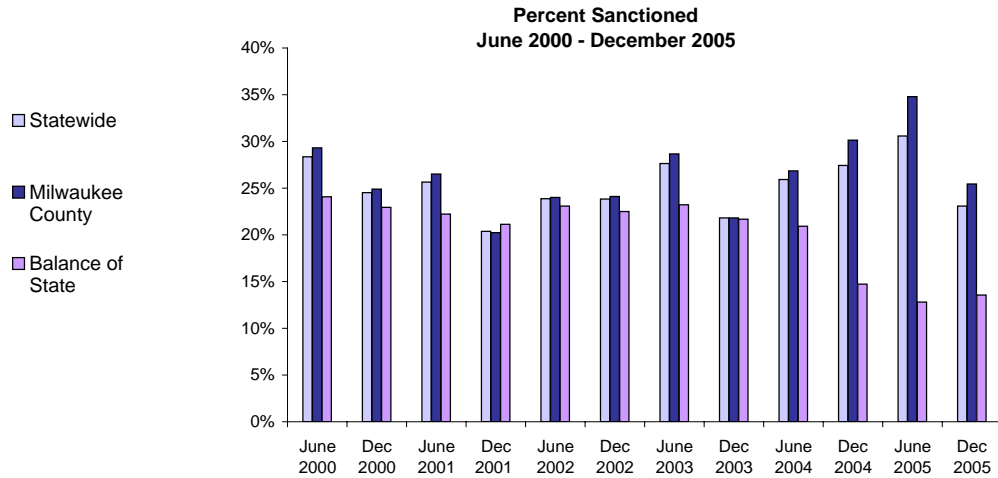
\*Note: Participants may be counted more than once if the participant's extension lasts longer than six months. Ongoing Extensions are an end of the month count.

## W-2T and CSJ Participants Who Were Sanctioned\*



**Number Sanctioned - Most Recent Six Months**

	July 2005	Aug 2005	Sep 2005	Oct 2005	Nov 2005	Dec 2005
<b>Milwaukee County</b>	2,062	1,853	1,621	1,520	1,521	1,279
<b>Balance of State</b>	176	171	164	151	164	170
<b>Statewide</b>	2,238	2,024	1,785	1,671	1,685	1,449



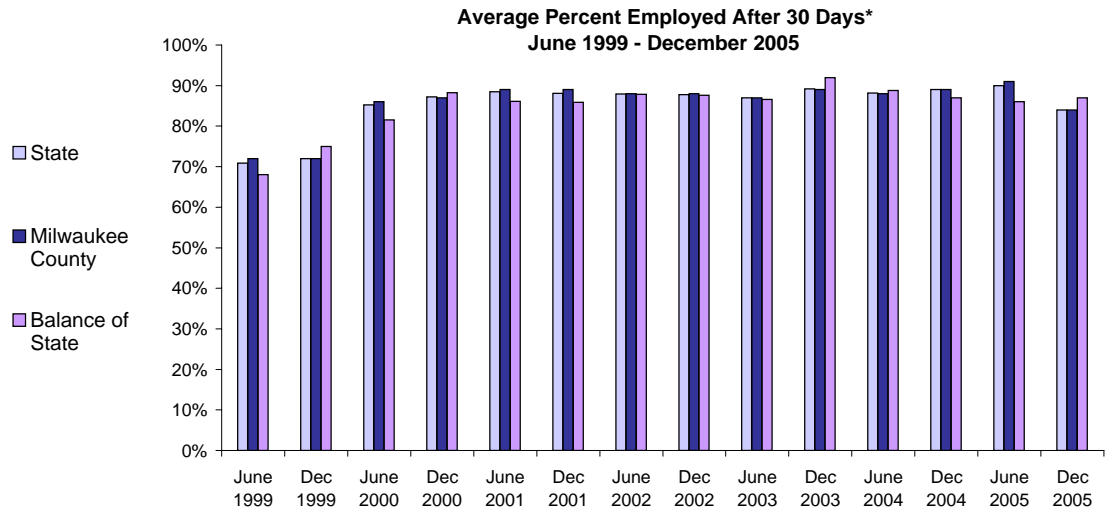
**Percent Sanctioned - Most Recent Six Months**

	July 2005	Aug 2005	Sep 2005	Oct 2005	Nov 2005	Dec 2005
<b>Milwaukee County</b>	35%	34%	30%	29%	29%	25%
<b>Balance of State</b>	12	12	12	11	12	14
<b>Statewide</b>	31%	29%	26%	25%	26%	23%

Source: CARES, Bureau of Workforce Information, Division of Workforce Solutions, Department of Workforce Development.

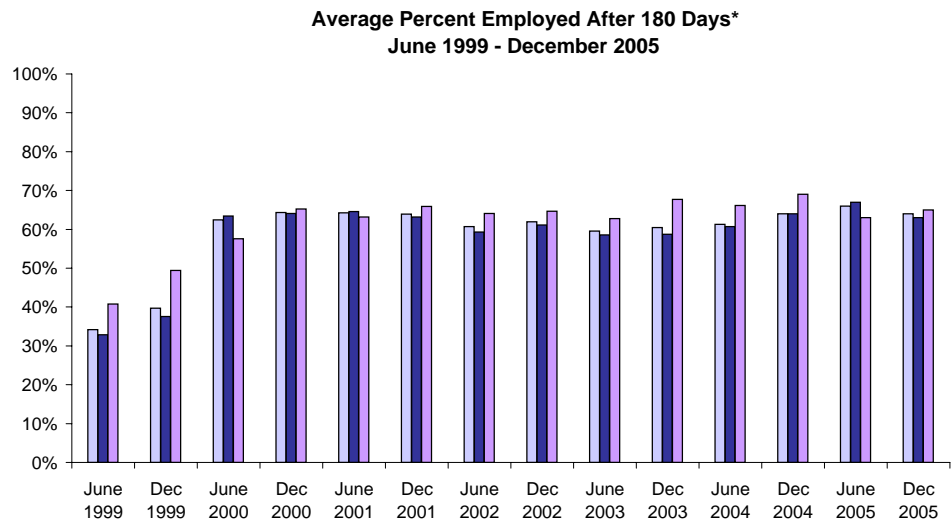
\* Note: Because sanction counts prior to September 1999 were counted differently they are not included in these graphs. The graphs on this page report information on the sanctionable population (W-2T and CSJ placements only). The data represented here are point in time during a month.

## W-2 Participants Employed After 30 and 180 Days



**Number Employed After 30 Days - Most Recent Six Months**

	July 2005	Aug 2005	Sep 2005	Oct 2005	Nov 2005	Dec 2005
<b>Milwaukee County</b>	422	393	495	409	359	289
<b>Balance of State</b>	79	65	82	75	82	54
<b>Statewide</b>	501	458	577	484	441	343



**Number Employed After 180 Days - Most Recent Six Months**

	July 2005	Aug 2005	Sep 2005	Oct 2005	Nov 2005	Dec 2005
<b>Milwaukee County</b>	235	264	390	324	281	290
<b>Balance of State</b>	63	68	35	65	64	46
<b>Statewide</b>	298	332	425	389	345	336

Source: CARES, Bureau of Workforce Information, Division of Workforce Solutions, Department of Workforce Development.

\*Note: The percent employed is a six month average of the months prior to the date in the graph. Entered employments are unsubsidized employments that began during the W-2 episode. Follow-throughs that meet the criteria are recorded for entered employments as of the 30th or 180th day after the start of an entered employment. The recorded results of the follow-through can be no contact, employed, or not employed.