



## Wisconsin W-2 Participants in Paid Placements\*

Number of Participants in Paid Placements					
	One Year Ago	Last Month	This Month	Change in Most Recent Two Months	
	May 2004	Apr 2005	May 2005	Number	Percent
<b>Paid Participants:</b>					
Milwaukee County	10,014	7,359	6,973	-386	-5.5%
Balance of State	2,479	2,277	2,251	-26	-1.2%
Statewide Caseload	12,493	9,636	9,224	-412	-4.5%
<b>Milwaukee County Regions:</b>	<b>May 2004</b>	<b>Apr 2005</b>	<b>May 2005</b>	<b>Number</b>	<b>Percent</b>
Region 1	1,060	1,071	993	-78	-7.9%
Region 2	1,122	946	887	-59	-6.7%
Region 3	2,199	2	0	-2	0.0%
Region 4	1,764	2,149	1,931	-218	-11.3%
Region 5	2,311	1,935	1,957	22	1.1%
Region 6	1,556	1,254	1,204	-50	-4.2%
<b>Milwaukee County Total*:</b>	10,014	7,359	6,973	-386	-5.5%

Source: CARES, Bureau of Workforce Information, Division of Workforce Solutions, Department of Workforce Development.

\* Milwaukee County total includes a small number of cases served by Milwaukee County Department of Social Services.

Note: The paid caseload includes the following categories of placements:

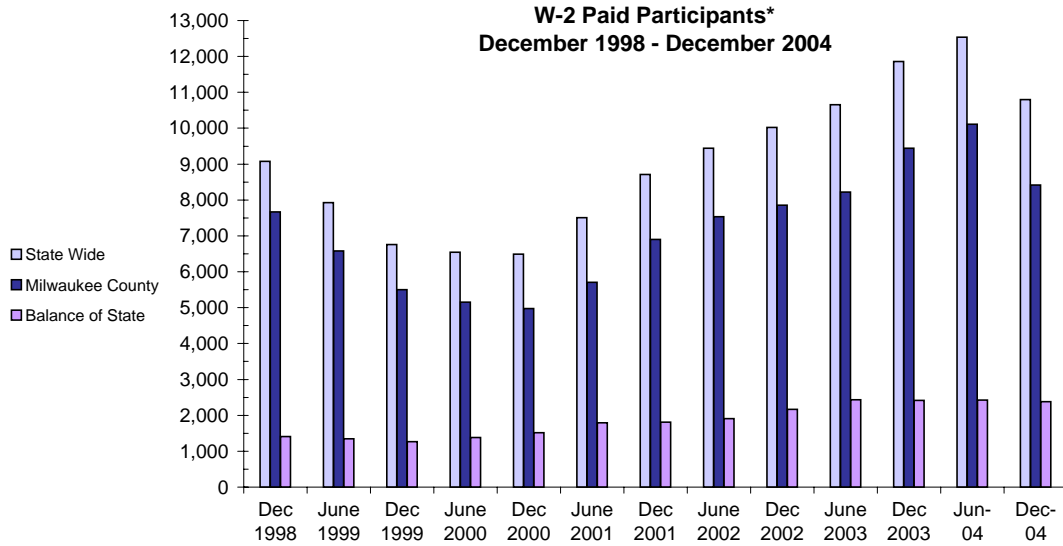
W-2 Transition (W-2T)..... A W-2 work-readiness practice placement for individuals who are unable to perform independent, self-sustaining work, but who are able to participate in work practice or other developmental activities and training up to their abilities.

Community Service Job (CSJ)..... A W-2 work-readiness practice placement designed to improve the employability of participants by providing work experience and training in the public and private sectors.

Trial Job (TJB)..... A W-2 subsidized employment position that provides work experience and training which may become permanent, unsubsidized employment. Paid directly to the employer.

Case Mgmt- Caretaker of Newborn (A custodial parent of a child who is 12 weeks old or less and who meets the financial and non-financial eligibility requirements for W-2 employment positions.

## W-2 Paid Participants and Benefits Paid

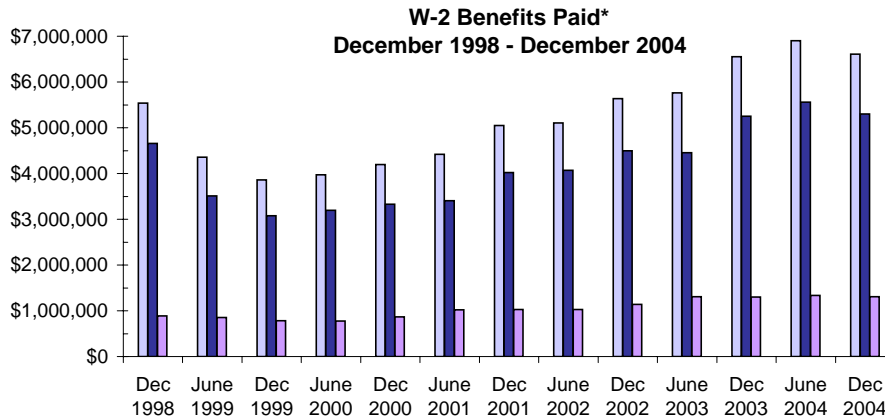


### W-2 Paid Participants - Most Recent Six Months

	Dec 2004	Jan 2005	Feb 2005	Mar 2005	Apr 2005	May 2005
<b>Milwaukee County</b>	8,418	8,162	7,827	7,589	7,359	6,973
<b>Balance of State</b>	2,382	2,385	2,289	2,300	2,277	2,251
<b>Statewide</b>	10,800	10,547	10,116	9,889	9,636	9,224

Source: CARES, Bureau of Workforce Information, Division of Workforce Solutions, Department of Workforce Development

\*Note: The paid participants included in this count are participants who were in a paid placement during the report month.



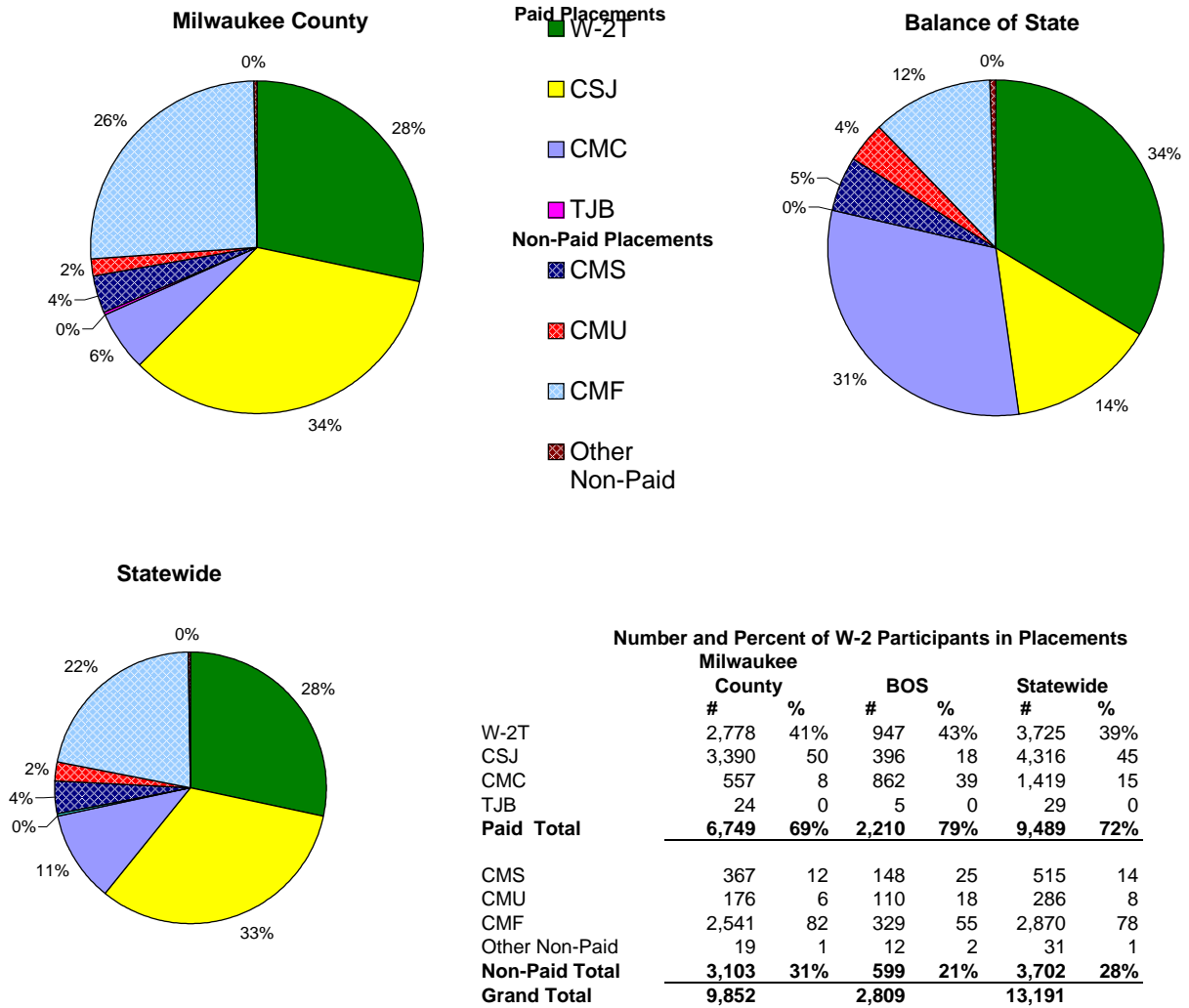
### W-2 Benefits Paid - Most Recent Six Months

	Dec 2004	Jan 2005	Feb 2005	Mar 2005	Apr 2005	May 2005
<b>Milwaukee County</b> \$	5,301,425	4,894,004	4,843,566	4,654,031	4,485,324	4,281,226
<b>Balance of State</b>	1,305,393	1,297,410	1,317,132	1,285,850	1,266,701	1,251,004
<b>Statewide</b>	\$6,606,818	\$6,191,414	\$6,160,698	\$5,939,881	\$5,752,025	\$5,532,230

Source: CARES, Bureau of Workforce Information, Division of Workforce Solutions, Department of Workforce Development

\*Note: The benefits paid are the total monthly net benefits after sanctions and recoupments are applied.

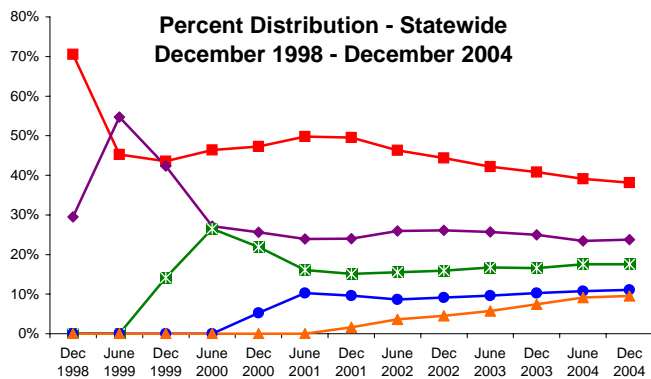
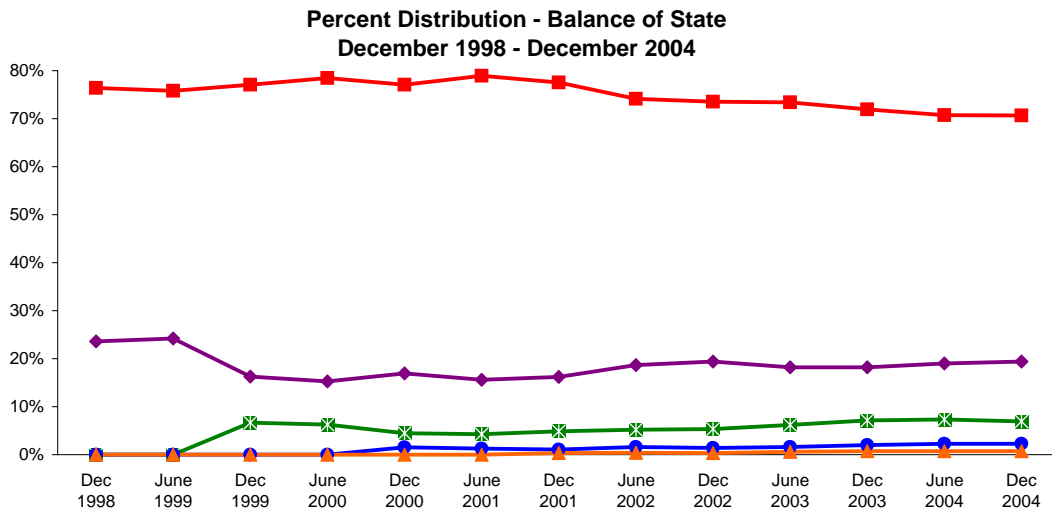
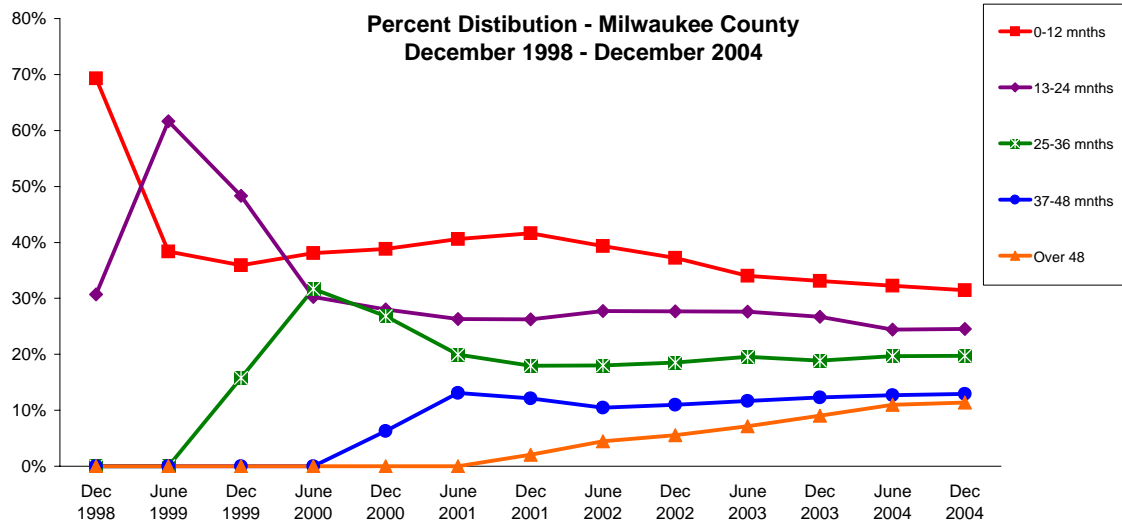
## Placement of W-2 Participants, May 2005



Source: CARES, Bureau of Workforce Information, Division of Workforce Solutions, Department of Workforce Development.

- \* Note: W-2 Transition (W-2T)..... A W-2 work-readiness practice placement for individuals who are unable to perform independent, self-sustaining work, but who are able to participate in work practice or other developmental activities and training up to their abilities.
- Community Service Job (CSJ)..... A W-2 work-readiness practice placement designed to improve the employability of participants by providing work experience and training in the public and private sectors.
- Trial Job (TJB)..... A W-2 subsidized employment position that provides work experience and training which may become permanent, unsubsidized employment. Paid directly to the employer.
- Case Mgmt - Caretaker of a Newborn (CMC)..... A custodial parent of a child who is 12 weeks old or less and who meets the financial and non-financial eligibility requirements for W-2 employment positions.
- Case Mgmt - Pregnancy (CMP)..... A participant with a medically verified pregnancy.
- Case Mgmt - Service for Job Ready (CMS)..... Used for case management services for unemployed individuals who have been assessed as having the capability of obtaining immediate full-time employment.
- Case Mgmt Follow-up (CMF)..... Used for case management services for participants who have moved up the W-2 ladder to unsubsidized employment.
- Case Mgmt - Service for Working (CMU)..... Used for individuals working in unsubsidized employment who are without barriers to full-time employment.
- Case Mgmt - Non-Custodial Parent (CMN)..... Used for case management services for non-custodial parents.
- Case Mgmt - Minor Parent (CMM)..... Used for case management services for a custodial minor parent.

### Number of Months Served in W-2\*



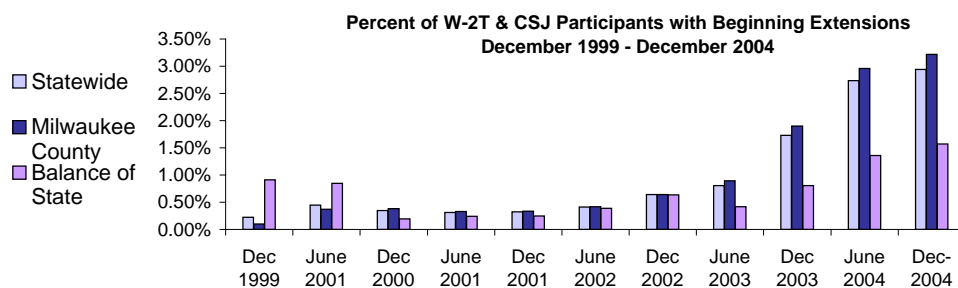
		Number of Months Served in W-2 - Most Recent Six Months					
		Dec 2004	Jan 2005	Feb 2005	Mar 2005	Apr 2005	May 2005
<b>Milwaukee County</b>	0-12	3506	3325	3075	2925	2795	2742
	13-24	2871	2657	2503	2366	2248	2322
	25-36	2297	2126	1992	1890	1790	1890
	37-48	1638	1534	1447	1393	1326	1485
	Over 48	1725	1514	1441	1363	1317	1752
<b>Balance of State</b>	0-12	2305	1776	1519	1419	1351	2160
	13-24	599	510	464	426	389	548
	25-36	235	196	190	174	165	205
	37-48	84	73	68	66	60	95
	Over 48	33	26	25	21	20	36
<b>Statewide</b>	0-12	5479	4790	4314	4075	4722	4589
	13-24	3436	3140	2941	2767	2942	2844
	25-36	2531	2322	2180	2065	2155	2092
	37-48	1728	1610	1517	1461	1630	1590
	Over 48	1783	1564	1490	1405	1823	1811

Source: CARES, Bureau of Workforce Information, Division of Workforce Solutions, Department of Workforce Development.

\*Note: Length of stay is determined for the W-2 participants in the report month by the number of total months a participant has been in W-2 since the beginning of the program.

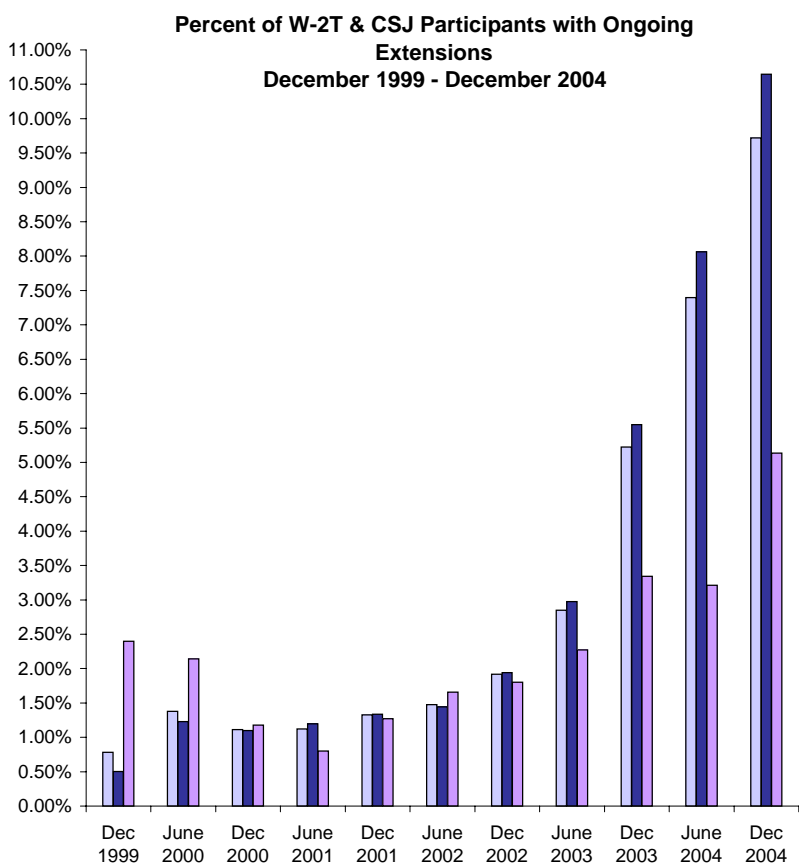
\*Note: Participants may be counted more than once if their geographic location changes from Milwaukee to Balance of State or vice versa.

## Extensions Granted for 24 Month Clocks\*



### Number of Beginning Extensions - Most Recent Six Months

	Dec 2004	Jan 2005	Feb 2005	Mar 2005	Apr 2005	May 2005
<b>Milwaukee County</b>	253	253	221	250	260	304
<b>Balance of State</b>	25	25	30	26	28	16
<b>Statewide</b>	278	285	251	276	288	320



### Number of Ongoing Extensions - Most Recent Six Months

	Dec 2004	Jan 2005	Feb 2005	Mar 2005	Apr 2005	May 2005
<b>Milwaukee County</b>	761	742	707	731	700	719
<b>Balance of State</b>	74	74	80	74	74	70
<b>Statewide</b>	835	816	787	805	774	789

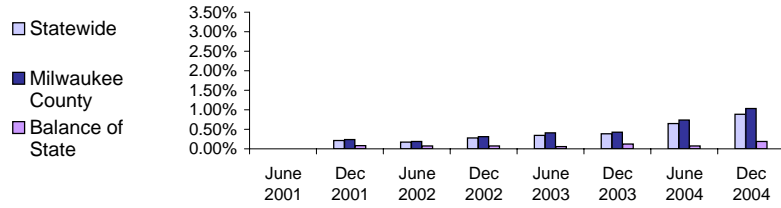
Source: CARES, Bureau of Workforce Information, Division of Workforce Solutions, Department of Workforce Development.

\*Note: Extensions can be granted after 24 months of participation in a W-2T or CSJ placement. Extensions are granted when the participant is nearing the 24th month of their placement clock and they qualify for extended eligibility by meeting specific required criteria.

\*Note: Participants may be counted more than once if the participant's extension lasts longer than six months. Ongoing Extensions are an end of the month count.

## Extensions Granted for 60 Month Clocks\*

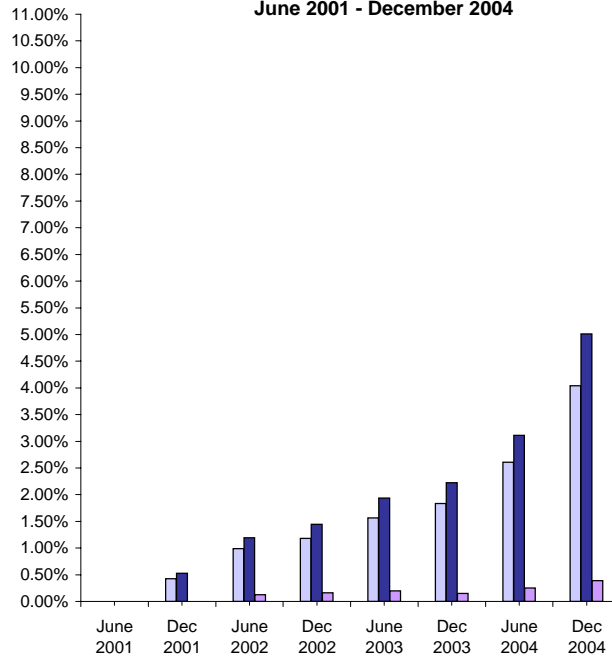
### Percent of Participants with Beginning Extensions June 2001 - December 2004



### Number of Beginning Extensions - Most Recent Six Months

	Dec 2004	Jan 2005	Feb 2005	Mar 2005	Apr 2005	May 2005
<b>Milwaukee County</b>	81	69	78	67	82	95
<b>Balance of State</b>	3	3	3	3	2	2
<b>Statewide</b>	84	72	81	70	84	97

### Percent of Participants with Ongoing Extensions June 2001 - December 2004



### Number of Ongoing Extensions - Most Recent Six Months

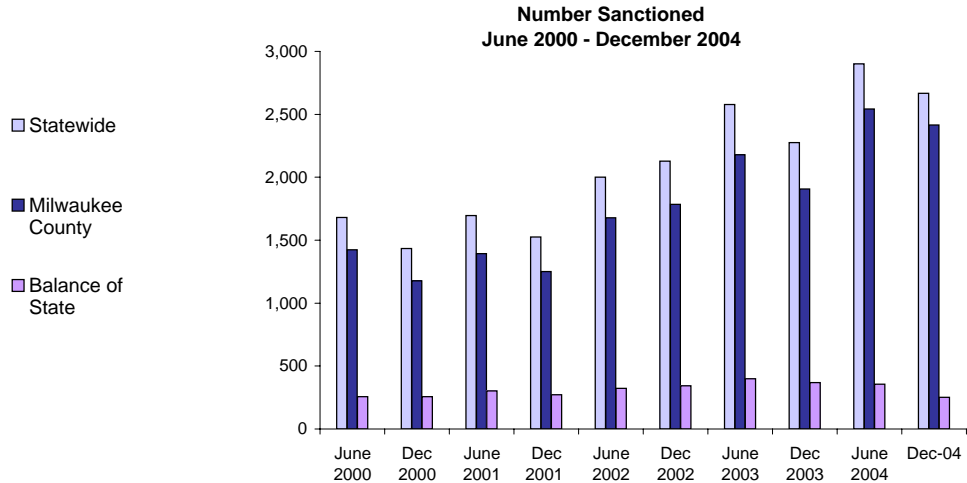
	Dec 2004	Jan 2005	Feb 2005	Mar 2005	Apr 2005	May 2005
<b>Milwaukee County</b>	384	386	392	407	398	369
<b>Balance of State</b>	8	10	8	6	7	9
<b>Statewide</b>	392	396	400	413	405	378

Source: CARES, Bureau of Workforce Information, Division of Workforce Solutions, Department of Workforce Development.

\*Note: Extensions can be granted after 60 months of lifetime participation. Extensions are granted when the participant is nearing the 60th month of their lifetime clock and they qualify for extended eligibility by meeting specific required criteria. The 60 month extensions first became relevant as of September 2001.

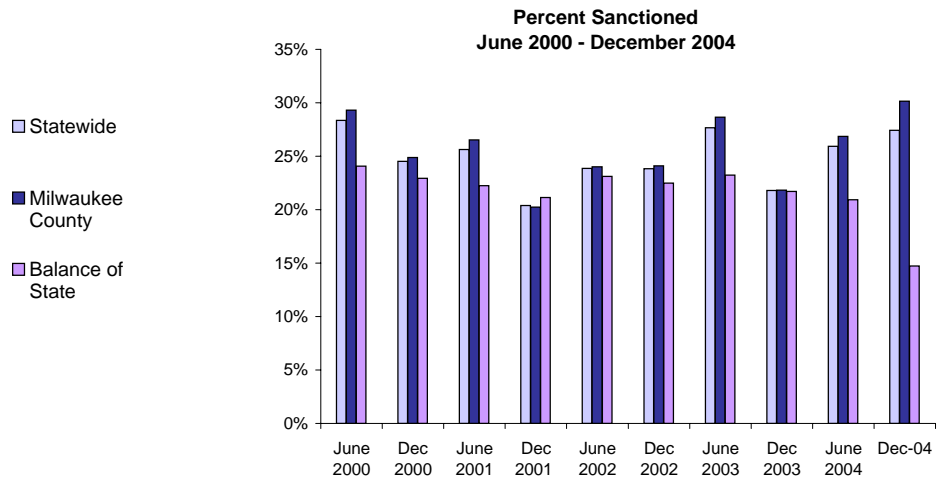
\*Note: Participants may be counted more than once if the participant's extension lasts longer than six months. Ongoing Extensions are at end of the month count.

## W-2T and CSJ Participants Who Were Sanctioned\*



**Number Sanctioned - Most Recent Six Months**

	Dec 2004	Jan 2005	Feb 2005	Mar 2005	Apr 2005	May 2005
<b>Milwaukee County</b>	2,414	1,931	1,884	1,679	2,044	2,148
<b>Balance of State</b>	252	205	201	215	227	191
<b>Statewide</b>	2,666	2,136	2,085	1,894	2,271	2,339



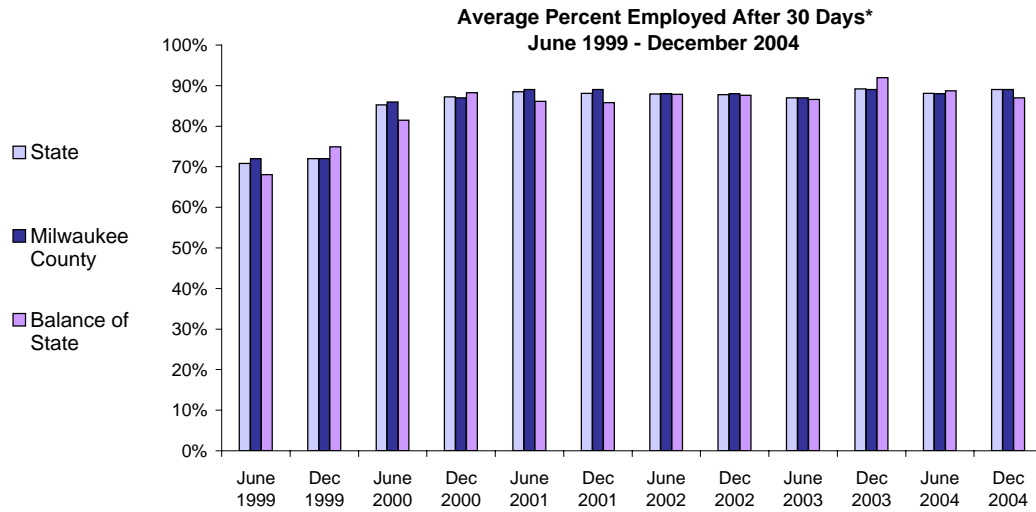
**Percent Sanctioned - Most Recent Six Months**

	Dec 2004	Jan 2005	Feb 2005	Mar 2005	Apr 2005	May 2005
<b>Milwaukee County</b>	30%	26%	26%	24%	30%	33%
<b>Balance of State</b>	15%	13%	13%	14%	15%	13%
<b>Statewide</b>	27%	24%	24%	22%	27%	30%

Source: CARES, Bureau of Workforce Information, Division of Workforce Solutions, Department of Workforce Development.

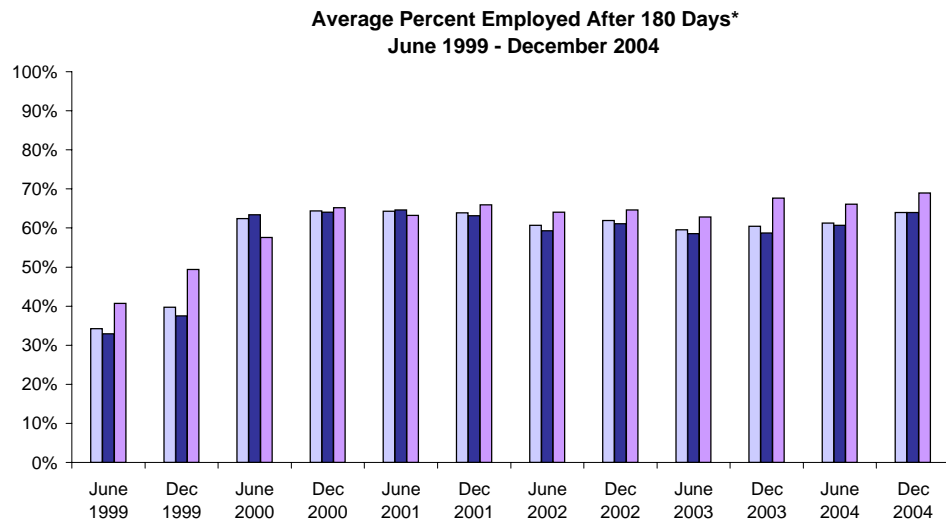
\* Note: Because sanction counts prior to September 1999 were counted differently they are not included in these graphs. The graphs on this page report information on the sanctionable population (W-2T and CSJ placements only). The data represented here are point in time during a month.

## W-2 Participants Employed After 30 and 180 Days



**Number Employed After 30 Days - Most Recent Six Months**

	Dec 2004	Jan 2005	Feb 2005	Mar 2005	Apr 2005	May 2005
<b>Milwaukee County</b>	300	231	279	303	337	411
<b>Balance of State</b>	52	29	26	40	47	59
<b>Statewide</b>	352	260	305	343	384	470



**Number Employed After 180 Days - Most Recent Six Months**

	Dec 2004	Jan 2005	Feb 2005	Mar 2005	Apr 2005	May 2005
<b>Milwaukee County</b>	221	327	334	316	267	272
<b>Balance of State</b>	33	39	43	51	46	44
<b>Statewide</b>	254	366	377	367	313	316

Source: CARES, Bureau of Workforce Information, Division of Workforce Solutions, Department of Workforce Development.

\*Note: The percent employed is a six month average of the months prior to the date in the graph. Entered employments are unsubsidized employments that began during the W-2 episode. Follow-throughs that meet the criteria are recorded for entered employments as of the 30th or 180th day after the start of an entered employment. The recorded results of the follow-through can be no contact, employed, or not employed.