

Wisconsin W-2 Participants in Paid Placements*

Number of Participants in Paid Placements

	One Year	Last Month	This Month	Change in Most Recent	
	Ago			Two Months	
Paid Participants:	Apr 2004	Mar 2005	Apr 2005	Number	Percent
Milwaukee County	10,000	7,589	7,359	-230	-3.1%
Balance of State	2,461	2,300	2,277	-23	-1.0%
Statewide Caseload	12,461	9,889	9,636	-253	-2.6%
Milwaukee County Regions:	Apr 2004	Mar 2005	Apr 2005	Number	Percent
Region 1	1,087	1,134	1,071	-63	-5.9%
Region 2	1,110	955	946	-9	-1.0%
Region 3	2,158	95	2	-93	-4650%
Region 4	1,727	2,141	2,149	8	0.4%
Region 5	2,362	1,935	1,935	0	0.0%
Region 6	1,554	1,327	1,254	-73	-5.8%
Milwaukee County Total*:	10,000	7,589	7,359	-230	-3.1%

Source: CARES, Bureau of Workforce Information, Division of Workforce Solutions, Department of Workforce Development.

* Milwaukee County total includes a small number of cases served by Milwaukee County Department of Social Services.

Note: The paid caseload includes the following categories of placements:

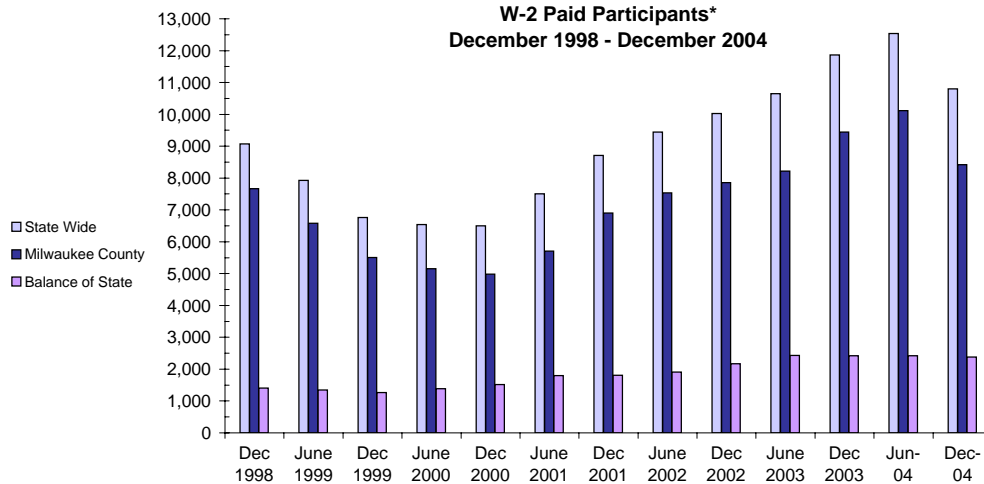
W-2 Transition (W-2T)..... A W-2 work-readiness practice placement for individuals who are unable to perform independent, self-sustaining work, but who are able to participate in work practice or other developmental activities and training up to their abilities.

Community Service Job (CSJ)..... A W-2 work-readiness practice placement designed to improve the employability of participants by providing work experience and training in the public and private sectors.

Trial Job (TJB)..... A W-2 subsidized employment position that provides work experience and training which may become permanent, unsubsidized employment. Paid directly to the employer.

Case Mgmt- Caretaker of Newborn A custodial parent of a child who is 12 weeks old or less and who meets the financial and non-financial eligibility requirements for W-2 employment positions.

W-2 Paid Participants and Benefits Paid

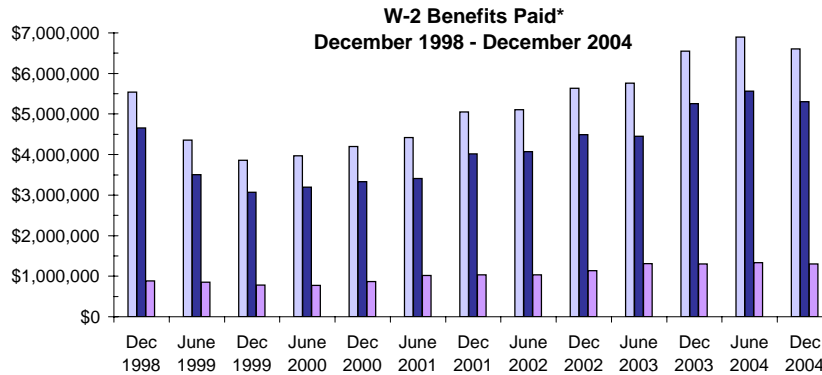


W-2 Paid Participants - Most Recent Six Months

	Nov 2004	Dec 2004	Jan 2005	Feb 2005	Mar 2005	Apr 2005
Milwaukee County	8,741	8,418	8,162	7,827	7,589	7,359
Balance of State	2,407	2,382	2,385	2,289	2,300	2,277
Statewide	11,148	10,800	10,547	10,116	9,889	9,636

Source: CARES, Bureau of Workforce Information, Division of Workforce Solutions, Department of Workforce Development

*Note: The paid participants included in this count are participants who were in a paid placement during the report month.



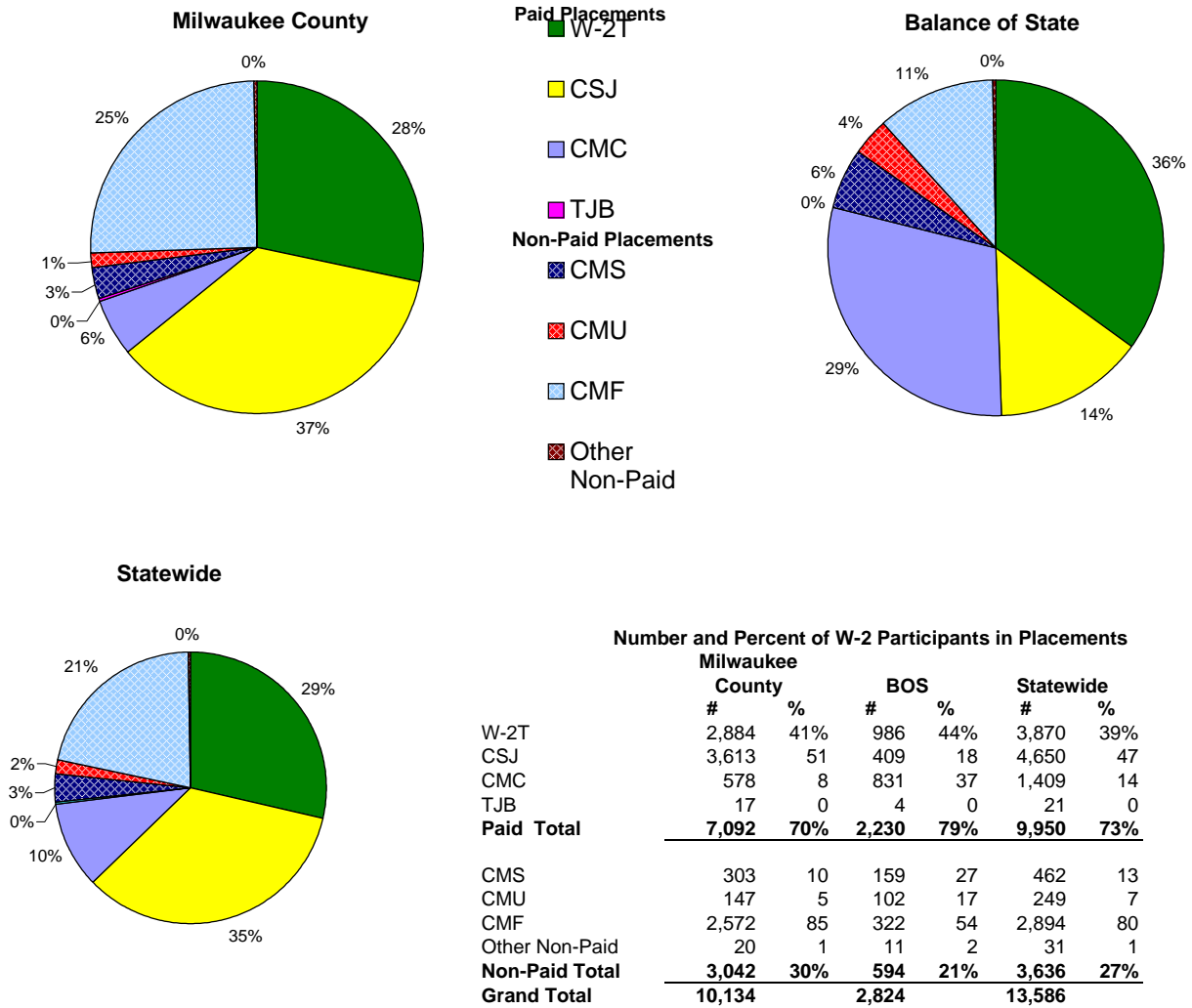
W-2 Benefits Paid - Most Recent Six Months

	Nov 2004	Dec 2004	Jan 2005	Feb 2005	Mar 2005	Apr 2005
Milwaukee County \$	5,278,356	5,301,425	4,894,004	4,843,566	4,654,031	3,218,623
Balance of State	1,315,966	1,305,393	1,297,410	1,317,132	1,285,850	1,266,701
Statewide	\$6,594,322	\$6,606,818	\$6,191,414	\$6,160,698	\$5,939,881	\$4,485,324

Source: CARES, Bureau of Workforce Information, Division of Workforce Solutions, Department of Workforce Development

*Note: The benefits paid are the total monthly net benefits after sanctions and recoupments are applied.

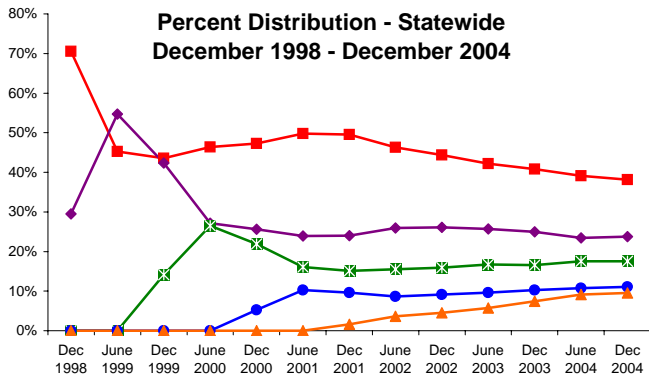
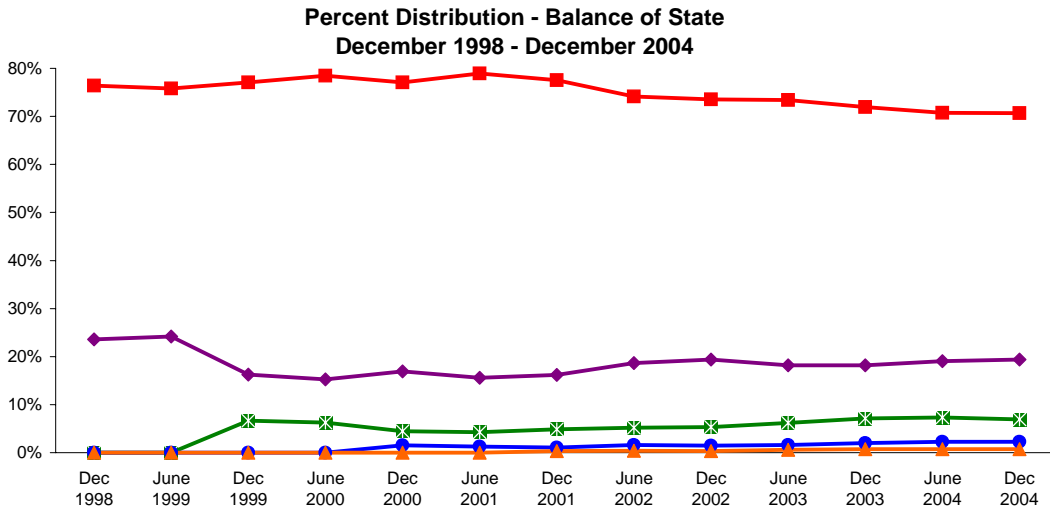
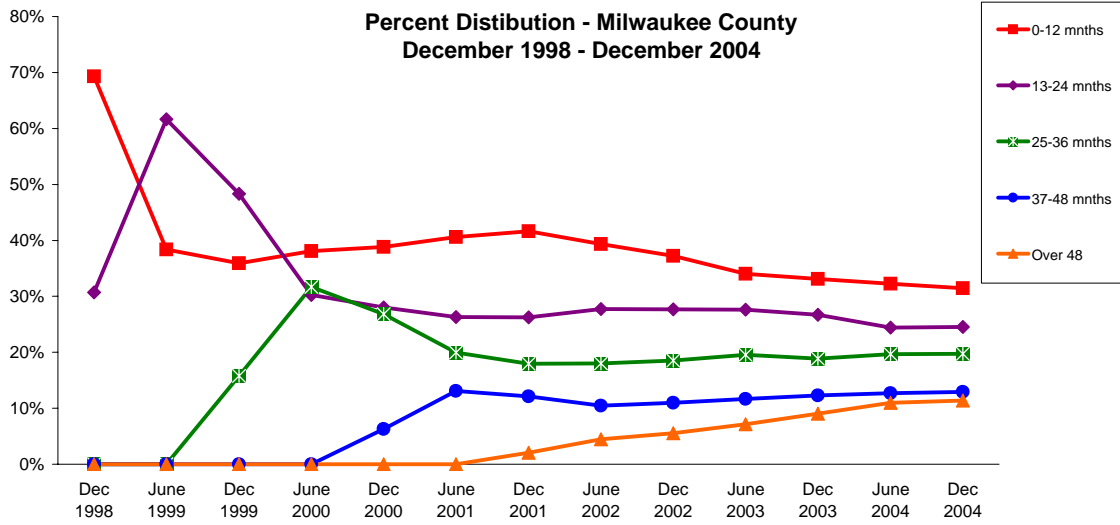
Placement of W-2 Participants, April 2005



Source: CARES, Bureau of Workforce Information, Division of Workforce Solutions, Department of Workforce Development.

- * Note:
- W-2 Transition (W-2T)..... A W-2 work-readiness practice placement for individuals who are unable to perform independent, self-sustaining work, but who are able to participate in work practice or other developmental activities and training up to their abilities.
 - Community Service Job (CSJ)..... A W-2 work-readiness practice placement designed to improve the employability of participants by providing work experience and training in the public and private sectors.
 - Trial Job (TJB)..... A W-2 subsidized employment position that provides work experience and training which may become permanent, unsubsidized employment. Paid directly to the employer.
 - Case Mgmt - Caretaker of a Newborn (CMC)..... A custodial parent of a child who is 12 weeks old or less and who meets the financial and non-financial eligibility requirements for W-2 employment positions.
 - Case Mgmt - Pregnancy (CMP)..... A participant with a medically verified pregnancy.
 - Case Mgmt - Service for Job Ready (CMS)..... Used for case management services for unemployed individuals who have been assessed as having the capability of obtaining immediate full-time employment.
 - Case Mgmt Follow-up (CMF)..... Used for case management services for participants who have moved up the W-2 ladder to unsubsidized employment.
 - Case Mgmt - Service for Working (CMU)..... Used for individuals working in unsubsidized employment who are without barriers to full-time employment.
 - Case Mgmt - Non-Custodial Parent (CMN)..... Used for case management services for non-custodial parents.
 - Case Mgmt - Minor Parent (CMM)..... Used for case management services for a custodial minor parent.

Number of Months Served in W-2*



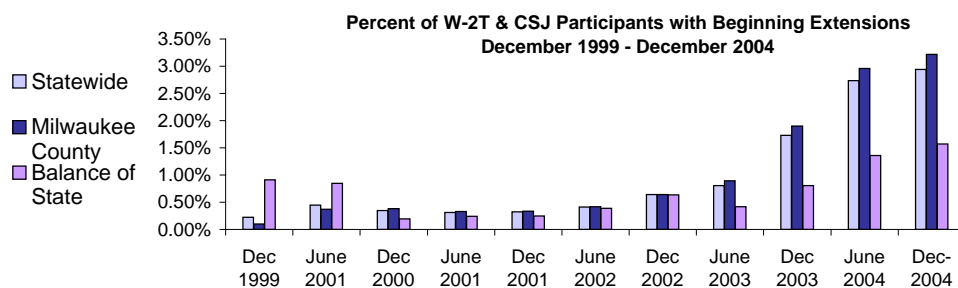
		Number of Months Served in W-2 - Most Recent Six Months					
		Nov 2004	Dec 2004	Jan 2005	Feb 2005	Mar 2005	Apr 2005
	Months						
Milwaukee County	0-12	3675	3506	3325	3075	2925	2795
	13-24	2985	2871	2657	2503	2366	2248
	25-36	2367	2297	2126	1992	1890	1790
	37-48	1684	1638	1534	1447	1393	1326
	Over 48	1707	1725	1514	1441	1363	1317
Balance of State	0-12	2367	2305	1776	1519	1419	1351
	13-24	589	599	510	464	426	389
	25-36	223	235	196	190	174	165
	37-48	93	84	73	68	66	60
	Over 48	29	33	26	25	21	20
Statewide	0-12	5696	5479	4790	4314	4075	4722
	13-24	3542	3436	3140	2941	2767	2942
	25-36	2590	2531	2322	2180	2065	2155
	37-48	1783	1728	1610	1517	1461	1630
	Over 48	1763	1783	1564	1490	1405	1823

Source: CARES, Bureau of Workforce Information, Division of Workforce Solutions, Department of Workforce Development.

*Note: Length of stay is determined for the W-2 participants in the report month by the number of total months a participant has been in W-2 since the beginning of the program.

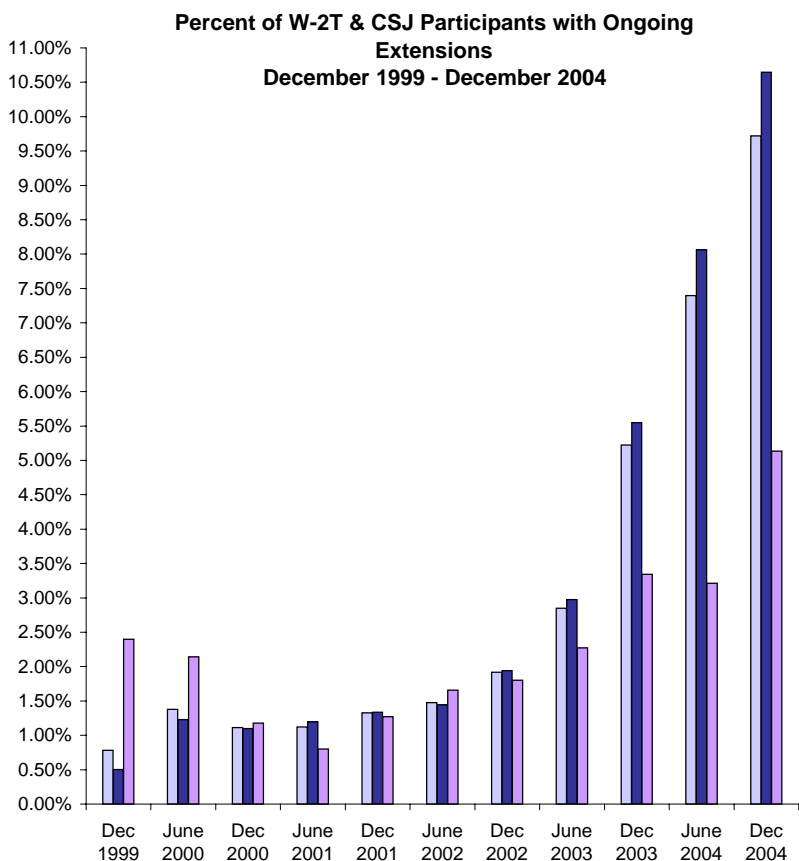
*Note: Participants may be counted more than once if their geographic location changes from Milwaukee to Balance of State or vice versa.

Extensions Granted for 24 Month Clocks*



Number of Beginning Extensions - Most Recent Six Months

	Nov 2004	Dec 2004	Jan 2005	Feb 2005	Mar 2005	Apr 2005
Milwaukee County	297	253	253	221	250	260
Balance of State	21	25	25	30	26	28
Statewide	318	278	285	251	276	288



Number of Ongoing Extensions - Most Recent Six Months

	Nov 2004	Dec 2004	Jan 2005	Feb 2005	Mar 2005	Apr 2005
Milwaukee County	823	761	742	707	731	700
Balance of State	74	74	74	80	74	74
Statewide	897	835	816	787	805	774

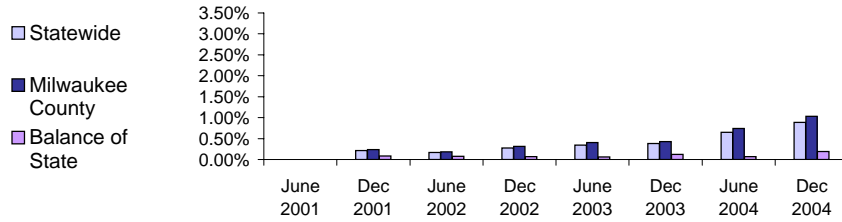
Source: CARES, Bureau of Workforce Information, Division of Workforce Solutions, Department of Workforce Development.

*Note: Extensions can be granted after 24 months of participation in a W-2T or CSJ placement. Extensions are granted when the participant is nearing the 24th month of their placement clock and they qualify for extended eligibility by meeting specific required criteria.

*Note: Participants may be counted more than once if the participant's extension lasts longer than six months. Ongoing Extensions are an end of the month count.

Extensions Granted for 60 Month Clocks*

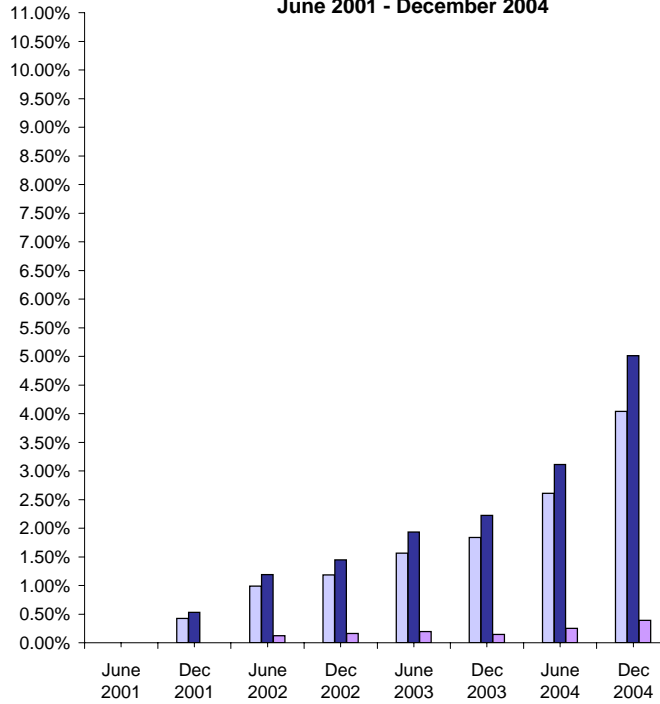
Percent of Participants with Beginning Extensions June 2001 - December 2004



Number of Beginning Extensions - Most Recent Six Months

	Nov 2004	Dec 2004	Jan 2005	Feb 2005	Mar 2005	Apr 2005
Milwaukee County	56	81	69	78	67	82
Balance of State	3	3	3	3	3	2
Statewide	59	84	72	81	70	84

Percent of Participants with Ongoing Extensions June 2001 - December 2004



Number of Ongoing Extensions - Most Recent Six Months

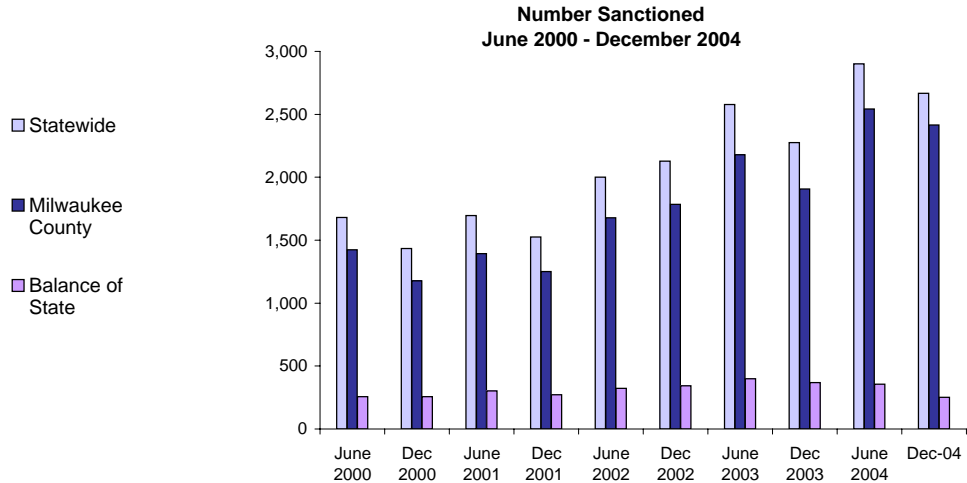
	Nov 2004	Dec 2004	Jan 2005	Feb 2005	Mar 2005	Apr 2005
Milwaukee County	367	384	386	392	407	398
Balance of State	7	8	10	8	6	7
Statewide	374	392	396	400	413	405

Source: CARES, Bureau of Workforce Information, Division of Workforce Solutions, Department of Workforce Development.

*Note: Extensions can be granted after 60 months of lifetime participation. Extensions are granted when the participant is nearing the 60th month of their lifetime clock and they qualify for extended eligibility by meeting specific required criteria. The 60 month extensions first became relevant as of September 2001.

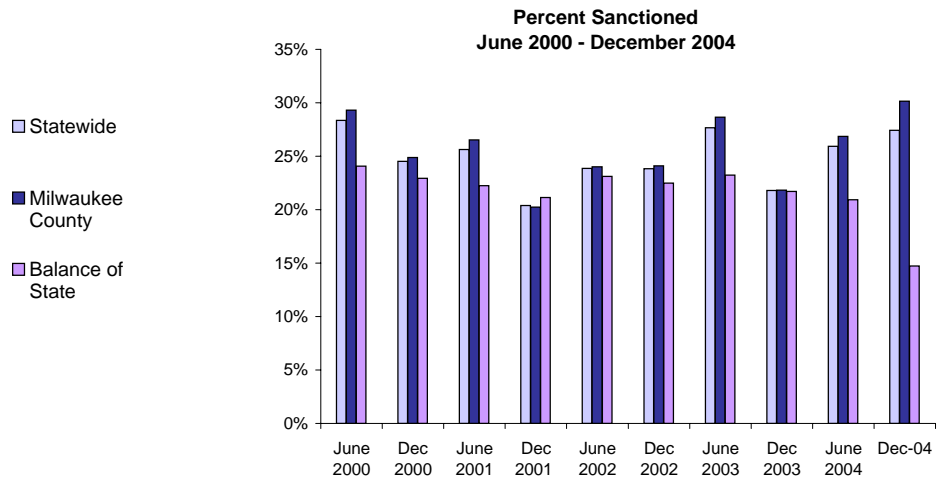
*Note: Participants may be counted more than once if the participant's extension lasts longer than six months. Ongoing Extensions are an end of the month count.

W-2T and CSJ Participants Who Were Sanctioned*



Number Sanctioned - Most Recent Six Months

	Nov 2004	Dec 2004	Jan 2005	Feb 2005	Mar 2005	Apr 2005
Milwaukee County	2,549	2,414	1,931	1,884	1,679	2,044
Balance of State	271	252	205	201	215	227
Statewide	2,820	2,666	2,136	2,085	1,894	2,271



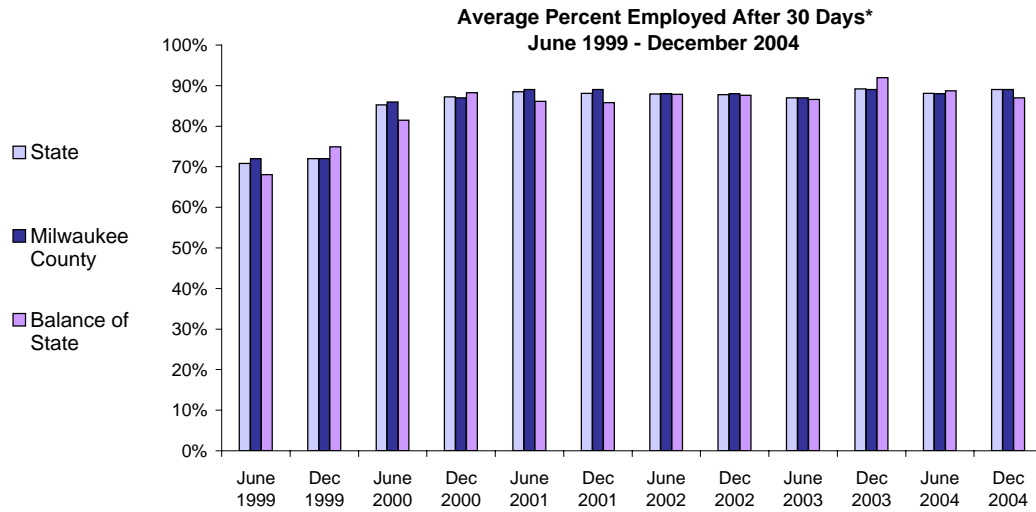
Percent Sanctioned - Most Recent Six Months

	Nov 2004	Dec 2004	Jan 2005	Feb 2005	Mar 2005	Apr 2005
Milwaukee County	30%	30%	26%	26%	24%	30%
Balance of State	16	15	13	13	14	15
Statewide	28%	27%	24%	24%	22%	27%

Source: CARES, Bureau of Workforce Information, Division of Workforce Solutions, Department of Workforce Development.

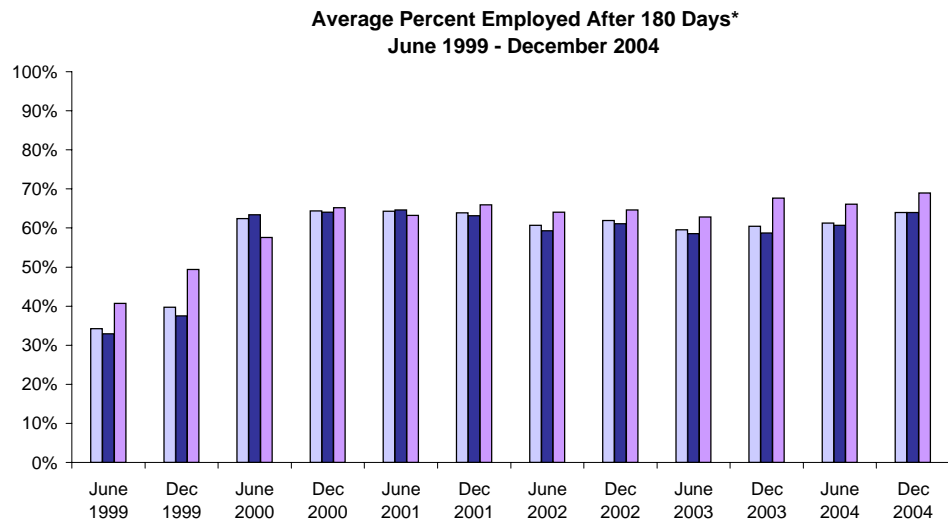
* Note: Because sanction counts prior to September 1999 were counted differently they are not included in these graphs. The graphs on this page report information on the sanctionable population (W-2T and CSJ placements only). The data represented here are point in time during a month.

W-2 Participants Employed After 30 and 180 Days



Number Employed After 30 Days - Most Recent Six Months

	Nov 2004	Dec 2004	Jan 2005	Feb 2005	Mar 2005	Apr 2005
Milwaukee County	299	300	231	279	303	337
Balance of State	49	52	29	26	40	47
Statewide	348	352	260	305	343	384



Number Employed After 180 Days - Most Recent Six Months

	Nov 2004	Dec 2004	Jan 2005	Feb 2005	Mar 2005	Apr 2005
Milwaukee County	185	221	327	334	316	267
Balance of State	39	33	39	43	51	46
Statewide	224	254	366	377	367	313

Source: CARES, Bureau of Workforce Information, Division of Workforce Solutions, Department of Workforce Development.

*Note: The percent employed is a six month average of the months prior to the date in the graph. Entered employments are unsubsidized employments that began during the W-2 episode. Follow-throughs that meet the criteria are recorded for entered employments as of the 30th or 180th day after the start of an entered employment. The recorded results of the follow-through can be no contact, employed, or not employed.