



## Wisconsin W-2 Participants in Paid Placements\*

Number of Participants in Paid Placements					
	One Year Ago	Last Month	This Month	Change in Most Recent Two Months	
	Mar 2004	Feb 2005	Mar 2005	Number	Percent
<b>Paid Participants:</b>					
Milwaukee County	9,962	7,827	7,589	-238	-3.1%
Balance of State	2,506	2,289	2,300	11	0.5%
Statewide Caseload	12,468	10,116	9,889	-227	-2.3%
<b>Milwaukee County Regions</b>	<b>Mar 2004</b>	<b>Feb 2005</b>	<b>Mar 2005</b>	<b>Number</b>	<b>Percent</b>
Region 1	1,060	1,116	1,134	18	1.6%
Region 2	1,116	956	955	-1	-0.1%
Region 3	2,100	1,657	95	-1562	-1644.2%
Region 4	1,684	1,297	2,141	844	39.4%
Region 5	2,436	1,506	1,935	429	22.2%
Region 6	1,565	1,290	1,327	37	2.8%
<b>Milwaukee County Total*:</b>	9,962	7,827	7,589	-238	-3.1%

Source: CARES, Bureau of Workforce Information, Division of Workforce Solutions, Department of Workforce Development.

\* Milwaukee County total includes a small number of cases served by Milwaukee County Department of Social Services.

Note: The paid caseload includes the following categories of placements:

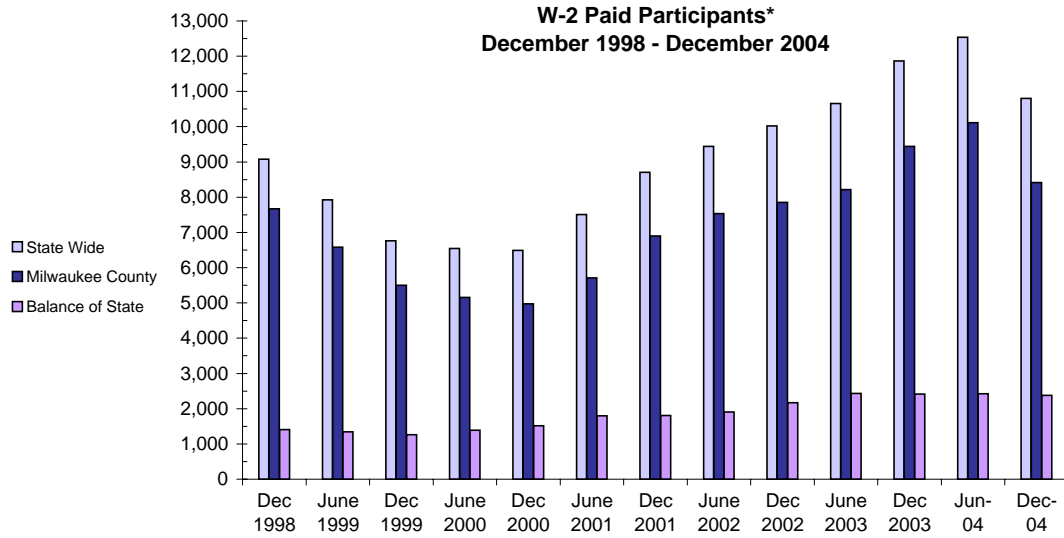
W-2 Transition (W-2T)..... A W-2 work-readiness practice placement for individuals who are unable to perform independent, self-sustaining work, but who are able to participate in work practice or other developmental activities and training up to their abilities.

Community Service Job (CSJ)..... A W-2 work-readiness practice placement designed to improve the employability of participants by providing work experience and training in the public and private sectors.

Trial Job (TJB)..... A W-2 subsidized employment position that provides work experience and training which may become permanent, unsubsidized employment. Paid directly to the employer.

Case Mgmt- Caretaker of Newborn (A custodial parent of a child who is 12 weeks old or less and who meets the financial and non-financial eligibility requirements for W-2 employment positions.

## W-2 Paid Participants and Benefits Paid

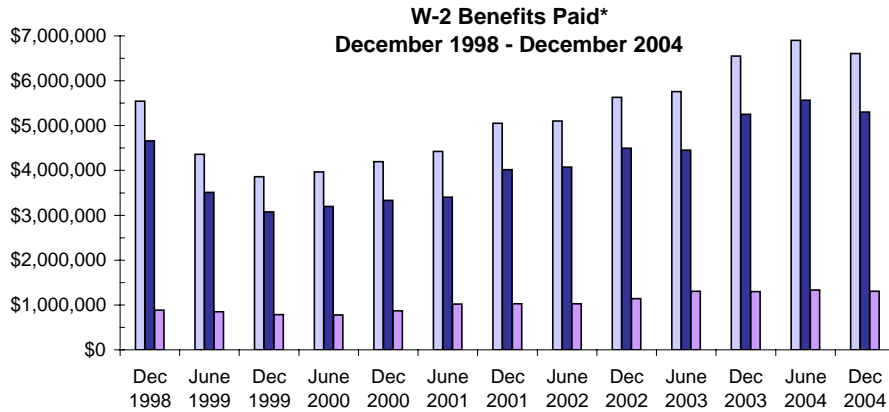


### W-2 Paid Participants - Most Recent Six Months

	Oct 2004	Nov 2004	Dec 2004	Jan 2005	Feb 2005	Mar 2005
<b>Milwaukee County</b>	9,109	8,741	8,418	8,162	7,827	7,589
<b>Balance of State</b>	2,417	2,407	2,382	2,385	2,289	2,300
<b>Statewide</b>	11,526	11,148	10,800	10,547	10,116	9,889

Source: CARES, Bureau of Workforce Information, Division of Workforce Solutions, Department of Workforce Development

\*Note: The paid participants included in this count are participants who were in a paid placement during the report month.



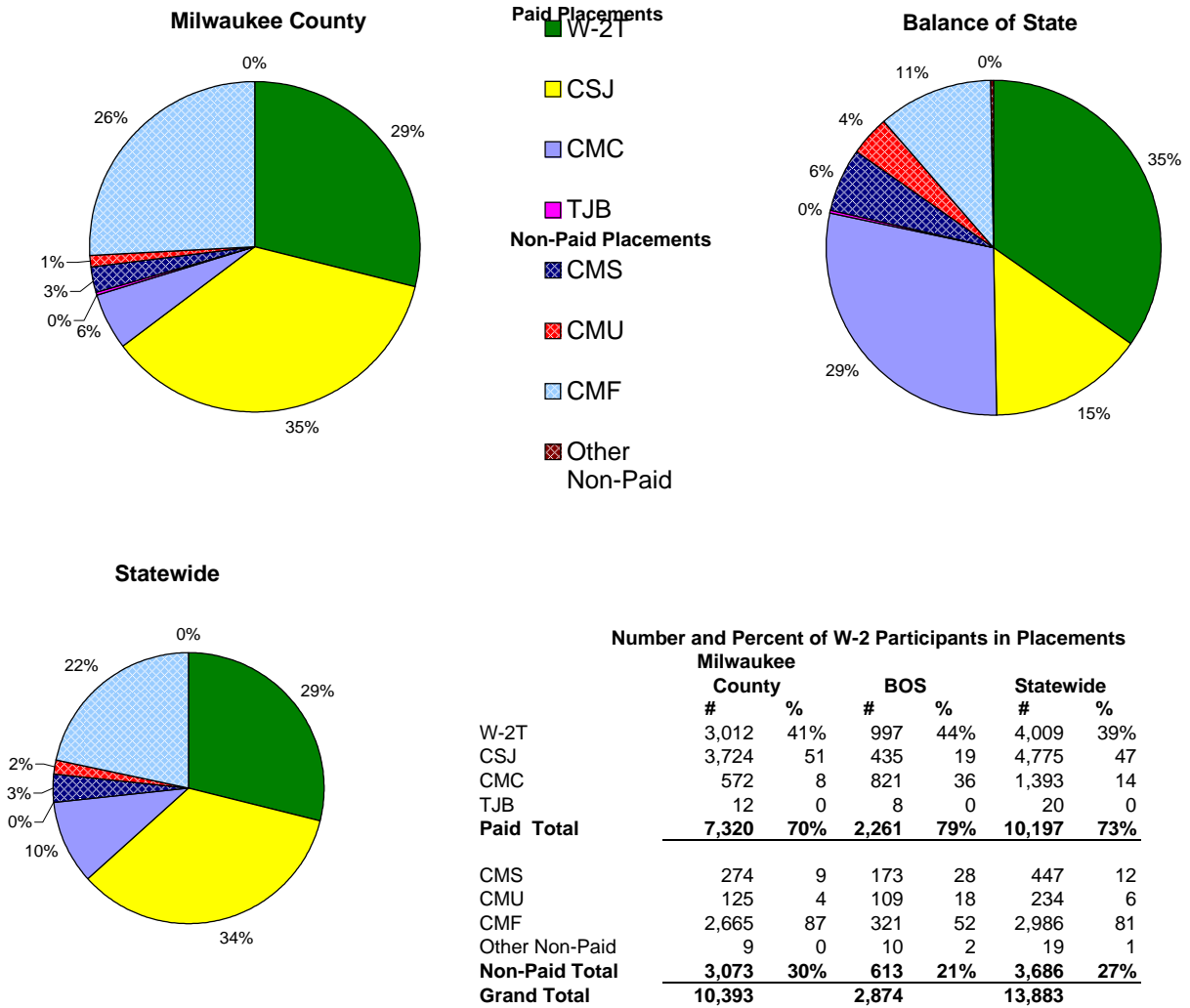
### W-2 Benefits Paid - Most Recent Six Months

	Oct 2004	Nov 2004	Dec 2004	Jan 2005	Feb 2005	Mar 2005
<b>Milwaukee County</b> \$	5,454,957	5,278,356	5,301,425	4,894,004	4,843,566	4,654,031
<b>Balance of State</b>	1,269,215	1,315,966	1,305,393	1,297,410	1,317,132	1,285,850
<b>Statewide</b>	\$6,724,172	\$6,594,322	\$6,606,818	\$6,191,414	\$6,160,698	\$5,939,881

Source: CARES, Bureau of Workforce Information, Division of Workforce Solutions, Department of Workforce Development

\*Note: The benefits paid are the total monthly net benefits after sanctions and recoupments are applied.

## Placement of W-2 Participants, March 2005



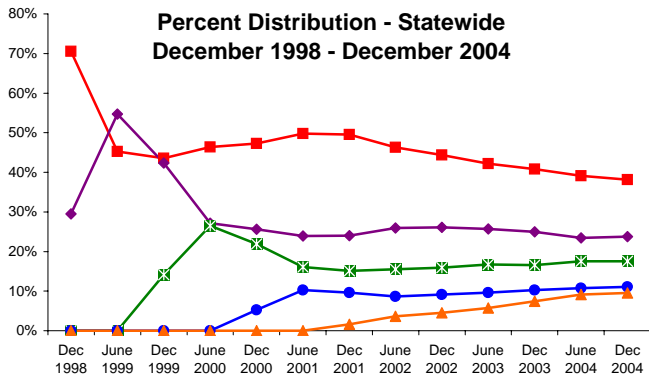
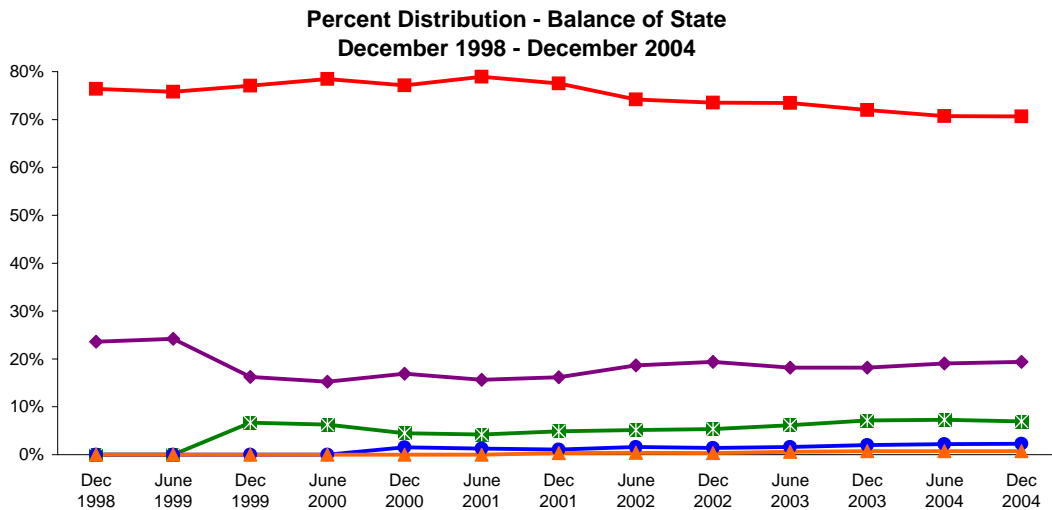
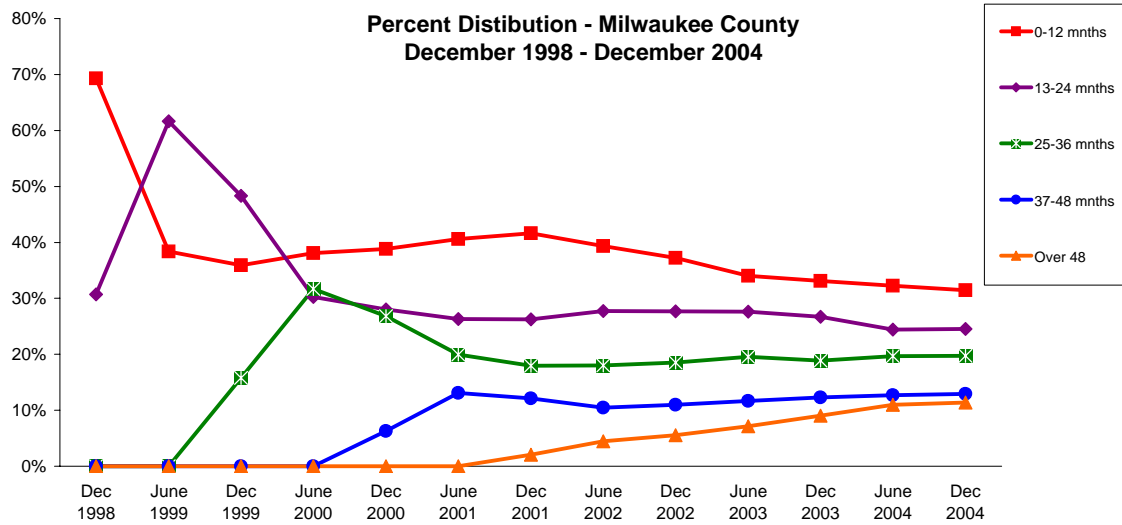
**Number and Percent of W-2 Participants in Placements**

	Milwaukee County		BOS		Statewide	
	#	%	#	%	#	%
W-2T	3,012	41%	997	44%	4,009	39%
CSJ	3,724	51	435	19	4,775	47
CMC	572	8	821	36	1,393	14
TJB	12	0	8	0	20	0
<b>Paid Total</b>	<b>7,320</b>	<b>70%</b>	<b>2,261</b>	<b>79%</b>	<b>10,197</b>	<b>73%</b>
CMS	274	9	173	28	447	12
CMU	125	4	109	18	234	6
CMF	2,665	87	321	52	2,986	81
Other Non-Paid	9	0	10	2	19	1
<b>Non-Paid Total</b>	<b>3,073</b>	<b>30%</b>	<b>613</b>	<b>21%</b>	<b>3,686</b>	<b>27%</b>
<b>Grand Total</b>	<b>10,393</b>		<b>2,874</b>		<b>13,883</b>	

Source: CARES, Bureau of Workforce Information, Division of Workforce Solutions, Department of Workforce Development.

- \* Note:
- W-2 Transition (W-2T)..... A W-2 work-readiness practice placement for individuals who are unable to perform independent, self-sustaining work, but who are able to participate in work practice or other developmental activities and training up to their abilities.
  - Community Service Job (CSJ)..... A W-2 work-readiness practice placement designed to improve the employability of participants by providing work experience and training in the public and private sectors.
  - Trial Job (TJB)..... A W-2 subsidized employment position that provides work experience and training which may become permanent, unsubsidized employment. Paid directly to the employer.
  - Case Mgmt - Caretaker of a Newborn (CMC)..... A custodial parent of a child who is 12 weeks old or less and who meets the financial and non-financial eligibility requirements for W-2 employment positions.
  - Case Mgmt - Pregnancy (CMP)..... A participant with a medically verified pregnancy.
  - Case Mgmt - Service for Job Ready (CMS)..... Used for case management services for unemployed individuals who have been assessed as having the capability of obtaining immediate full-time employment.
  - Case Mgmt Follow-up (CMF)..... Used for case management services for participants who have moved up the W-2 ladder to unsubsidized employment.
  - Case Mgmt - Service for Working (CMU)..... Used for individuals working in unsubsidized employment who are without barriers to full-time employment.
  - Case Mgmt - Non-Custodial Parent (CMN)..... Used for case management services for non-custodial parents.
  - Case Mgmt - Minor Parent (CMM)..... Used for case management services for a custodial minor parent.

### Number of Months Served in W-2\*



**Number of Months Served in W-2 - Most Recent Six Months**

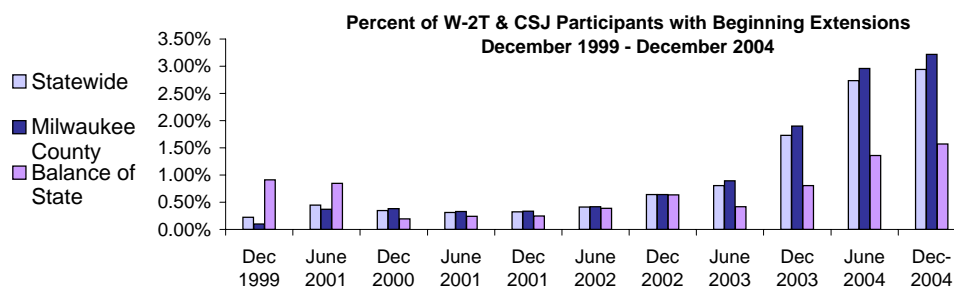
	Months	Oct 2004	Nov 2004	Dec 2004	Jan 2005	Feb 2005	Mar 2005
<b>Milwaukee County</b>	0-12	3741	3675	3506	3325	3075	2925
	13-24	2998	2985	2871	2657	2503	2366
	25-36	2358	2367	2297	2126	1992	1890
	37-48	1629	1684	1638	1534	1447	1393
	Over 48	1531	1707	1725	1514	1441	1363
<b>Balance of State</b>	0-12	2080	2367	2305	1776	1519	1419
	13-24	560	589	599	510	464	426
	25-36	206	223	235	196	190	174
	37-48	86	93	84	73	68	66
	Over 48	24	29	33	26	25	21
<b>Statewide</b>	0-12	5489	5696	5479	4790	4314	4075
	13-24	3530	3542	3436	3140	2941	2767
	25-36	2563	2590	2531	2322	2180	2065
	37-48	1721	1783	1728	1610	1517	1461
	Over 48	1582	1763	1783	1564	1490	1405

Source: CARES, Bureau of Workforce Information, Division of Workforce Solutions, Department of Workforce Development.

\*Note: Length of stay is determined for the W-2 participants in the report month by the number of total months a participant has been in W-2 since the beginning of the program.

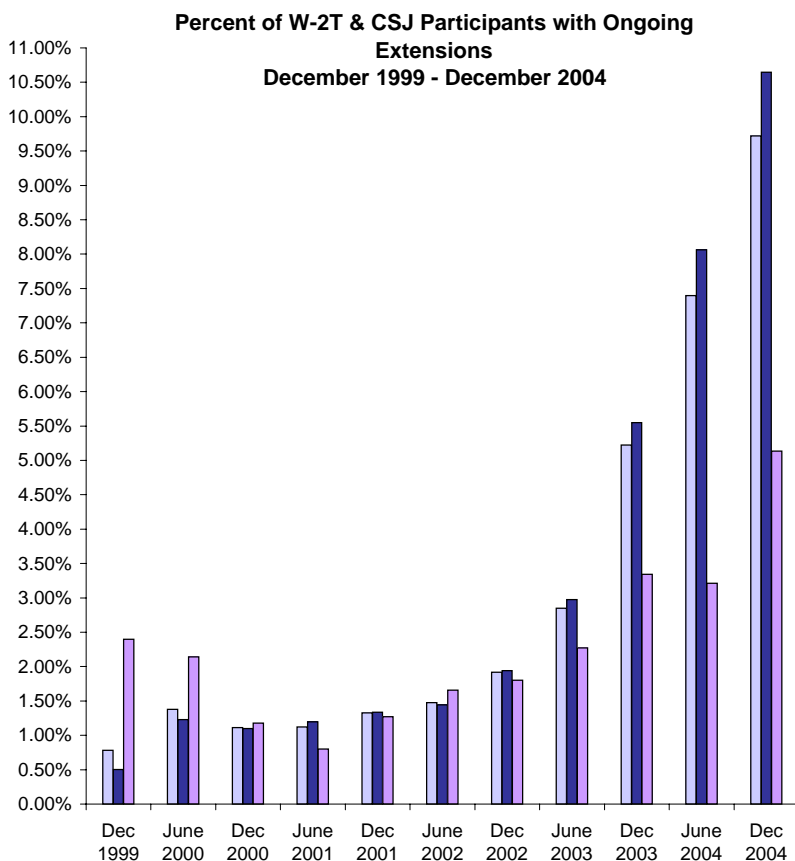
\*Note: Participants may be counted more than once if their geographic location changes from Milwaukee to Balance of State or vice versa.

## Extensions Granted for 24 Month Clocks\*



### Number of Beginning Extensions - Most Recent Six Months

	Sep 2004	Oct 2004	Nov 2004	Dec 2004	Jan 2005	Feb 2005
<b>Milwaukee County</b>	316	276	297	253	253	221
<b>Balance of State</b>	24	27	21	25	25	30
<b>Statewide</b>	340	303	318	278	285	251



### Number of Ongoing Extensions - Most Recent Six Months

	Sep 2004	Oct 2004	Nov 2004	Dec 2004	Jan 2005	Feb 2005
<b>Milwaukee County</b>	849	827	823	761	742	707
<b>Balance of State</b>	62	67	74	74	74	80
<b>Statewide</b>	911	894	897	835	816	787

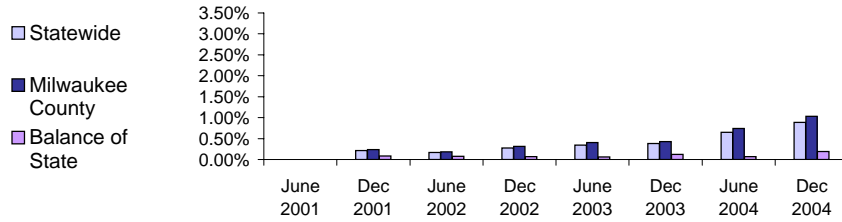
Source: CARES, Bureau of Workforce Information, Division of Workforce Solutions, Department of Workforce Development.

\*Note: Extensions can be granted after 24 months of participation in a W-2T or CSJ placement. Extensions are granted when the participant is nearing the 24th month of their placement clock and they qualify for extended eligibility by meeting specific required criteria.

\*Note: Participants may be counted more than once if the participant's extension lasts longer than six months. Ongoing Extensions are an end of the month count.

## Extensions Granted for 60 Month Clocks\*

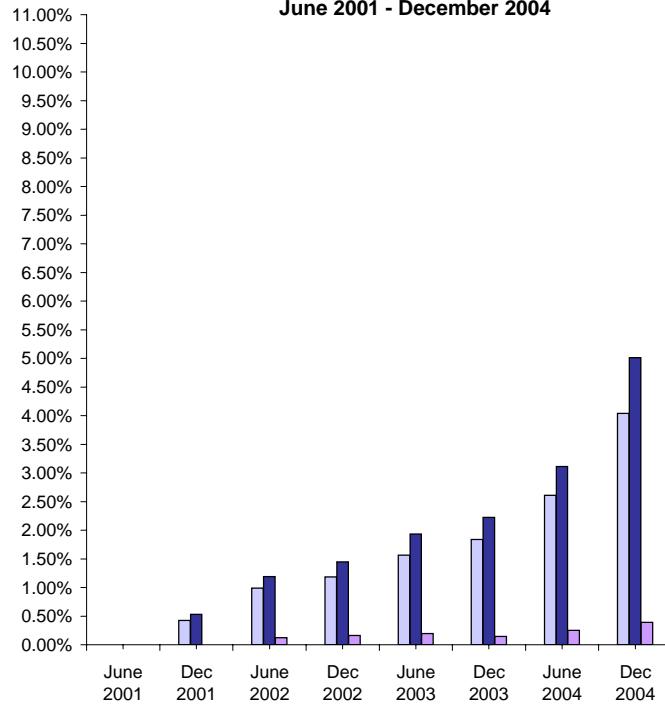
### Percent of Participants with Beginning Extensions June 2001 - December 2004



### Number of Beginning Extensions - Most Recent Six Months

	Sep 2004	Oct 2004	Nov 2004	Dec 2004	Jan 2005	Feb 2005
<b>Milwaukee County</b>	74	80	56	81	69	78
<b>Balance of State</b>	1	4	3	3	3	3
<b>Statewide</b>	75	84	59	84	72	81

### Percent of Participants with Ongoing Extensions June 2001 - December 2004



### Number of Ongoing Extensions - Most Recent Six Months

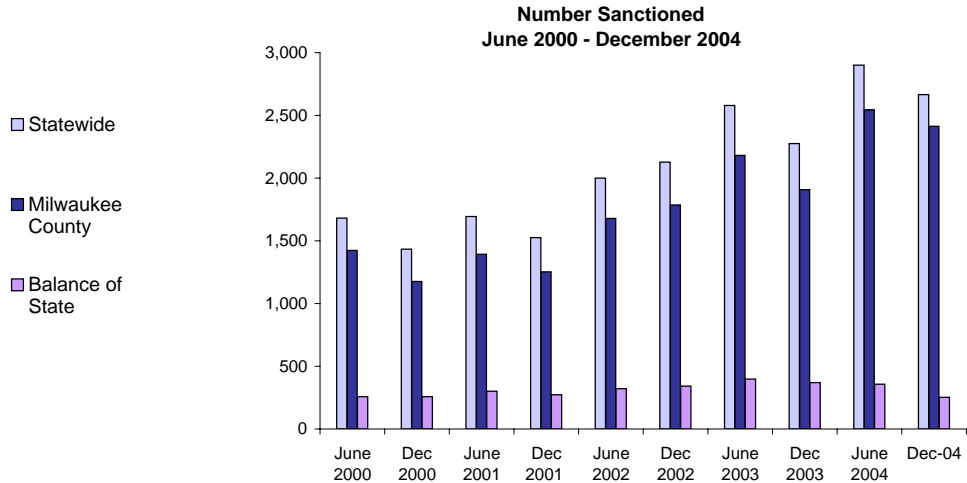
	Sep 2004	Oct 2004	Nov 2004	Dec 2004	Jan 2005	Feb 2005
<b>Milwaukee County</b>	338	366	367	384	386	392
<b>Balance of State</b>	4	6	7	8	10	8
<b>Statewide</b>	342	372	374	392	396	400

Source: CARES, Bureau of Workforce Information, Division of Workforce Solutions, Department of Workforce Development.

\*Note: Extensions can be granted after 60 months of lifetime participation. Extensions are granted when the participant is nearing the 60th month of their lifetime clock and they qualify for extended eligibility by meeting specific required criteria. The 60 month extensions first became relevant as of September 2001.

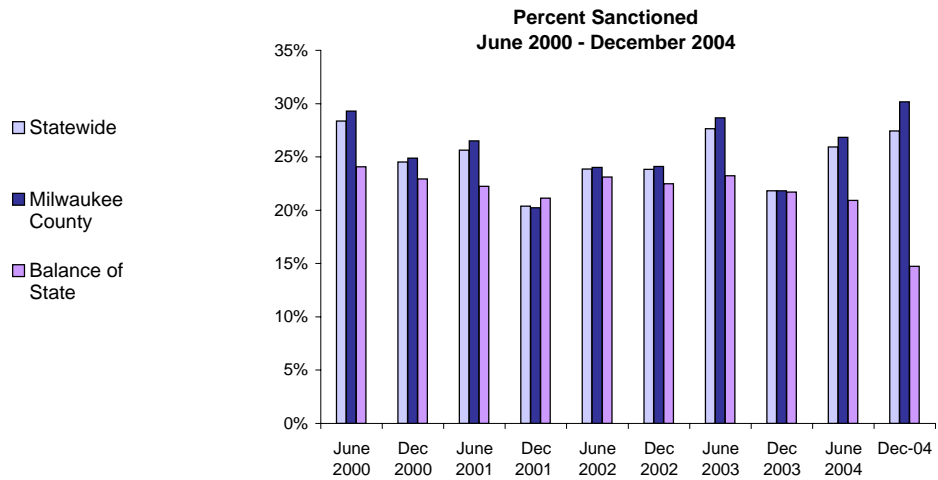
\*Note: Participants may be counted more than once if the participant's extension lasts longer than six months. Ongoing Extensions are an end of the month count.

## W-2T and CSJ Participants Who Were Sanctioned\*



**Number Sanctioned - Most Recent Six Months**

	Oct 2004	Nov 2004	Dec 2004	Jan 2005	Feb 2005	Mar 2005
<b>Milwaukee County</b>	2,570	2,549	2,414	1,931	1,884	1,679
<b>Balance of State</b>	273	271	252	205	201	215
<b>Statewide</b>	2,843	2,820	2,666	2,136	2,085	1,894



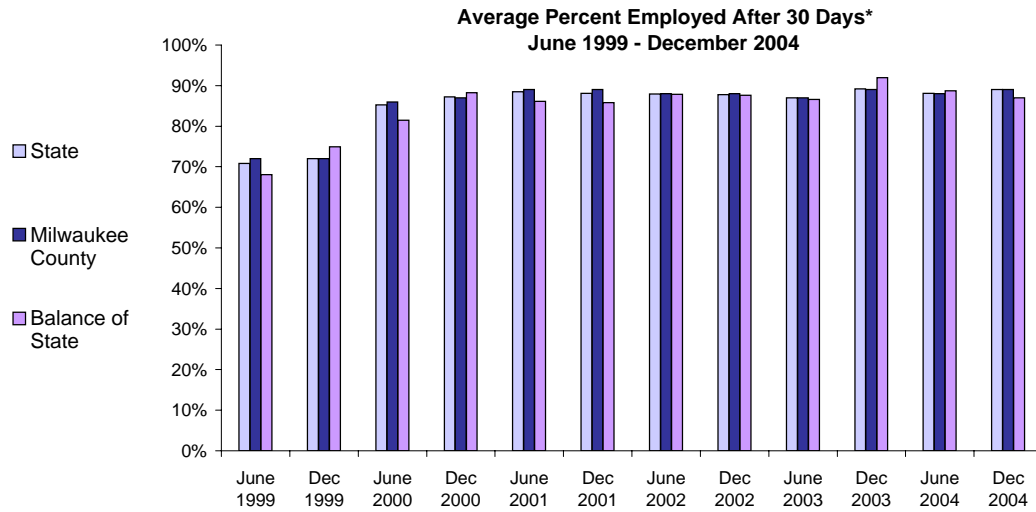
**Percent Sanctioned - Most Recent Six Months**

	Oct 2004	Nov 2004	Dec 2004	Jan 2005	Feb 2005	Mar 2005
<b>Milwaukee County</b>	28%	30%	30%	26%	26%	24%
<b>Balance of State</b>	16	16	15	13	13	14
<b>Statewide</b>	27%	28%	27%	24%	24%	22%

Source: CARES, Bureau of Workforce Information, Division of Workforce Solutions, Department of Workforce Development.

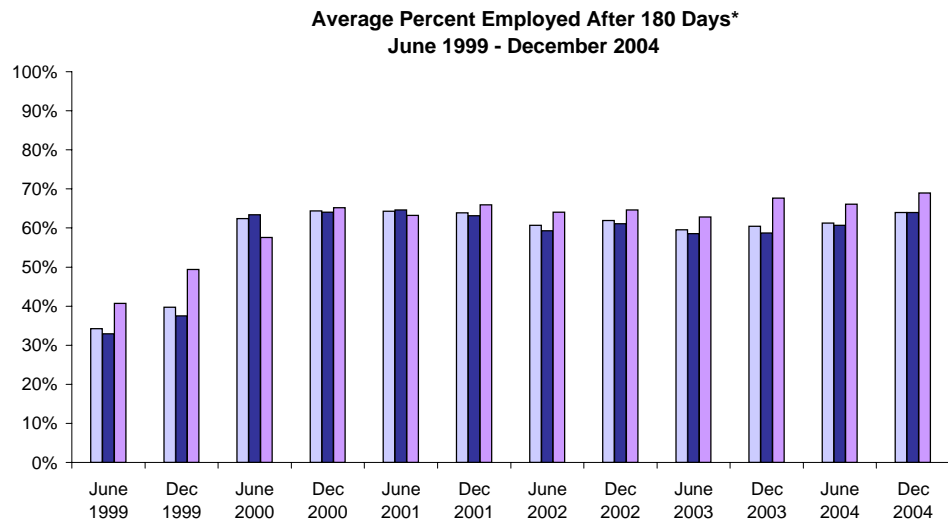
\* Note: Because sanction counts prior to September 1999 were counted differently they are not included in these graphs. The graphs on this page report information on the sanctionable population (W-2T and CSJ placements only). The data represented here are point in time during a month.

## W-2 Participants Employed After 30 and 180 Days



**Number Employed After 30 Days - Most Recent Six Months**

	Oct 2004	Nov 2004	Dec 2004	Jan 2005	Feb 2005	Mar 2005
<b>Milwaukee County</b>	415	299	300	231	279	303
<b>Balance of State</b>	59	49	52	29	26	40
<b>Statewide</b>	474	348	352	260	305	343



**Number Employed After 180 Days - Most Recent Six Months**

	Oct 2004	Nov 2004	Dec 2004	Jan 2005	Feb 2005	Mar 2005
<b>Milwaukee County</b>	280	185	221	327	334	316
<b>Balance of State</b>	21	39	33	39	43	51
<b>Statewide</b>	301	224	254	366	377	367

Source: CARES, Bureau of Workforce Information, Division of Workforce Solutions, Department of Workforce Development.

\*Note: The percent employed is a six month average of the months prior to the date in the graph. Entered employments are unsubsidized employments that began during the W-2 episode. Follow-throughs that meet the criteria are recorded for entered employments as of the 30th or 180th day after the start of an entered employment. The recorded results of the follow-through can be no contact, employed, or not employed.