

Bureau of Workforce Information  
Division of Workforce Solutions  
Department of Workforce Development



State of Wisconsin

## Wisconsin W-2 Participants in Paid Placements\*

Number of Participants in Paid Placements					
	One Year Ago	Last Month	This Month	Change in Most Recent Two Months	
	Mar 2003	Feb 2004	Mar 2004	Number	Percent
<b>Paid Participants:</b>					
Milwaukee County	7,716	9,819	9,962	143	1.4%
Balance of State	2,326	2,410	2,506	96	3.8%
Statewide Caseload	10,042	12,229	12,468	239	1.9%
<b>Milwaukee County Regions:</b>	<b>Mar 2003</b>	<b>Feb 2004</b>	<b>Mar 2004</b>	<b>Number</b>	<b>Percent</b>
Region 1	722	1,040	1,060	20	1.9%
Region 2	1,002	1,120	1,116	-4	-0.4%
Region 3	1,412	2,073	2,100	28	1.3%
Region 4	1,267	1,617	1,684	67	4.0%
Region 5	1,957	2,457	2,436	-21	-0.8%
Region 6	1,357	1,511	1,565	54	3.4%
<b>Milwaukee County Total:</b>	7,716	9,819	9,962	143	1.4%

Source: CARES, Bureau of Workforce Information, Division of Workforce Solutions, Department of Workforce Development.

\*Note: The paid caseload includes the following categories of placements:

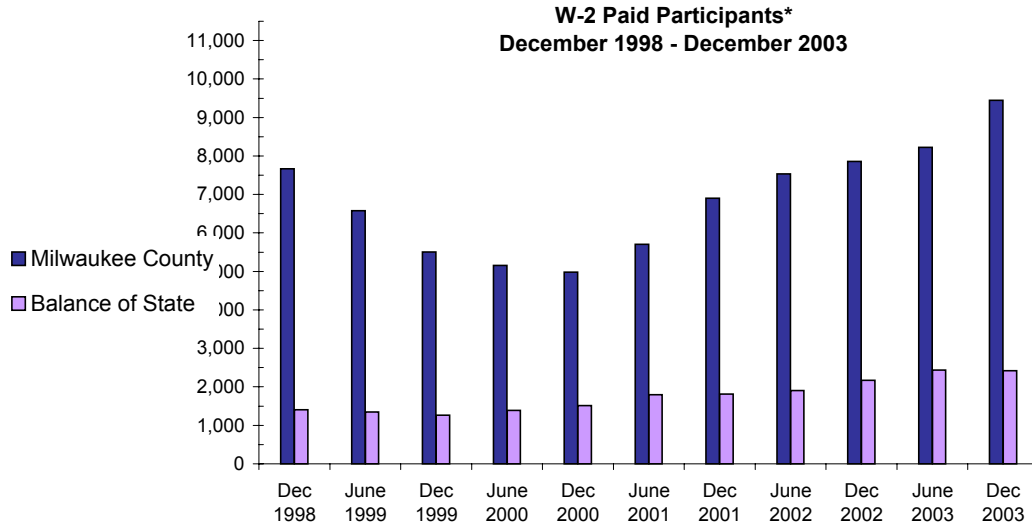
W-2 Transition (W-2T)..... A W-2 work-readiness practice placement for individuals who are unable to perform independent, self-sustaining work, but who are able to participate in work practice or other developmental activities and training up to their abilities.

Community Service Job (CSJ)..... A W-2 work-readiness practice placement designed to improve the employability of participants by providing work experience and training in the public and private sectors.

Trial Job (TJB)..... A W-2 subsidized employment position that provides work experience and training which may become permanent, unsubsidized employment. Paid directly to the employer.

Case Mgmt- Caretaker of Newborn A custodial parent of a child who is 12 weeks old or less and who meets the financial and non-financial eligibility requirements for W-2 employment positions.

## W-2 Paid Participants and Benefits Paid

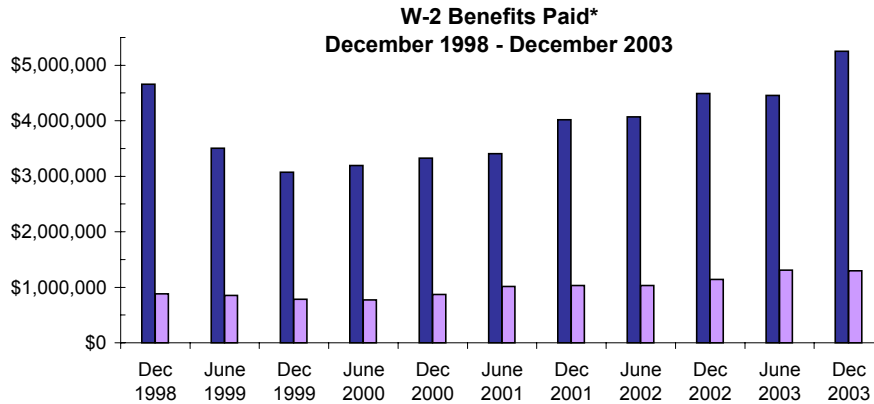


### W-2 Paid Participants - Most Recent Six Months

	Oct 2003	Nov 2003	Dec 2003	Jan 2004	Feb 2004	Mar 2004
<b>Milwaukee County</b>	9,111	9,190	9,443	9,634	9,819	9,962
<b>Balance of State</b>	2,441	2,362	2,418	2,436	2,410	2,506
<b>Statewide</b>	11,552	11,552	11,861	12,070	12,229	12,468

Source: CARES, Bureau of Workforce Information, Division of Workforce Solutions, Department of Workforce Development

\*Note: The paid participants included in this count are participants who were in a paid placement during the report month.



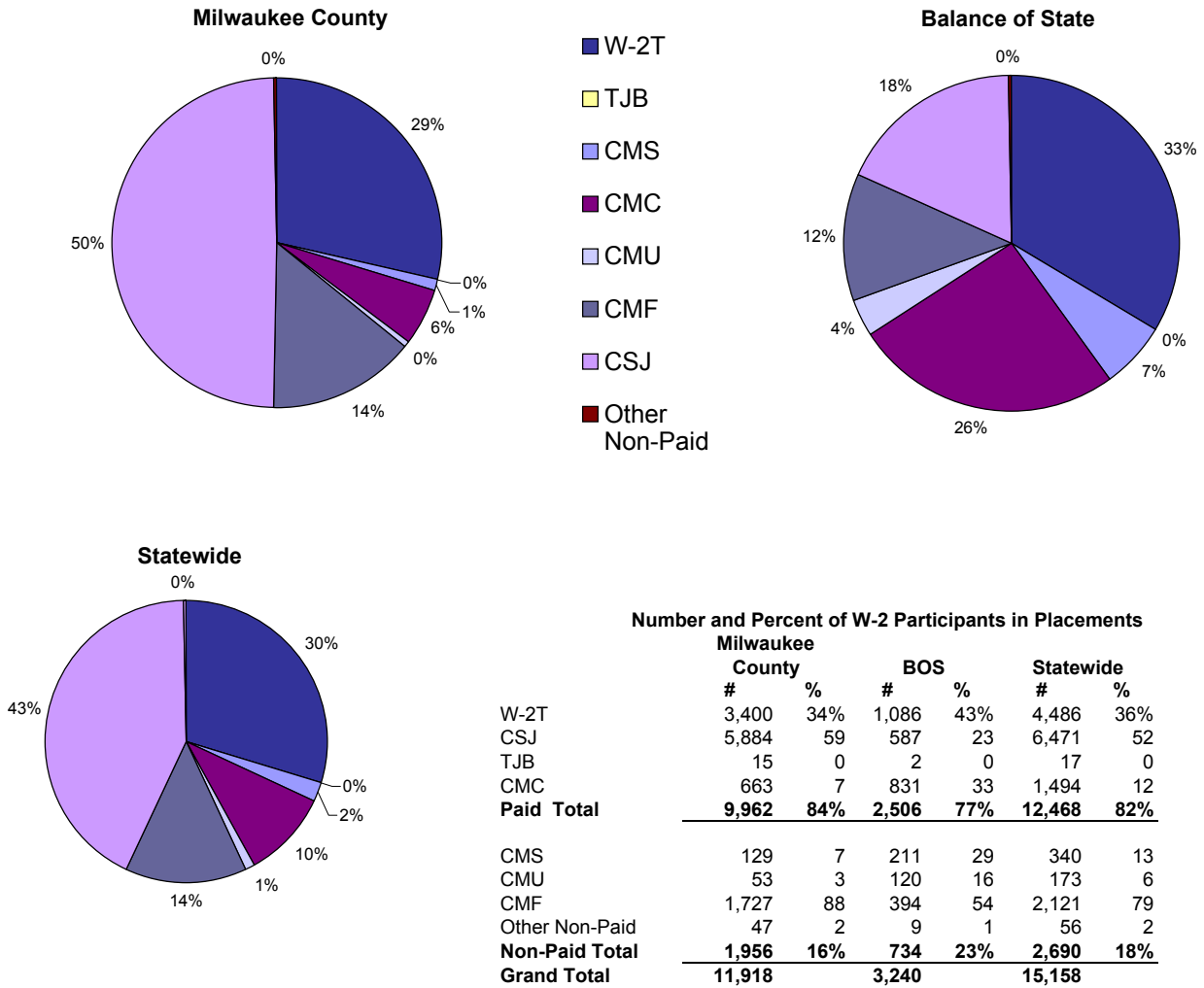
### W-2 Benefits Paid - Most Recent Six Months

	Oct 2003	Nov 2003	Dec 2003	Jan 2004	Feb 2004	Mar 2004
<b>Milwaukee County</b>	\$5,096,424	\$5,036,656	\$5,252,710	\$5,438,165	\$5,509,954	\$5,646,909
<b>Balance of State</b>	1,340,751	1,302,223	1,299,401	1,310,877	1,307,764	1,305,242
<b>Statewide</b>	\$6,437,175	\$6,338,879	\$6,552,111	\$6,749,042	\$6,817,718	\$6,952,151

Source: CARES, Bureau of Workforce Information, Division of Workforce Solutions, Department of Workforce Development

\*Note: The benefits paid are the total monthly net benefits after sanctions and recoupments are applied.

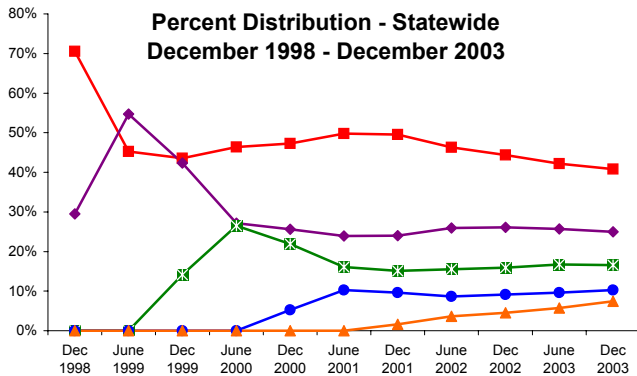
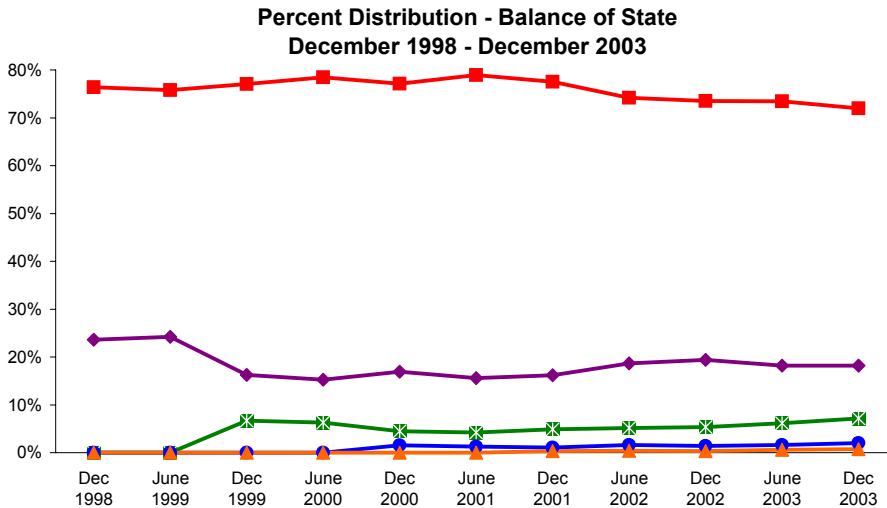
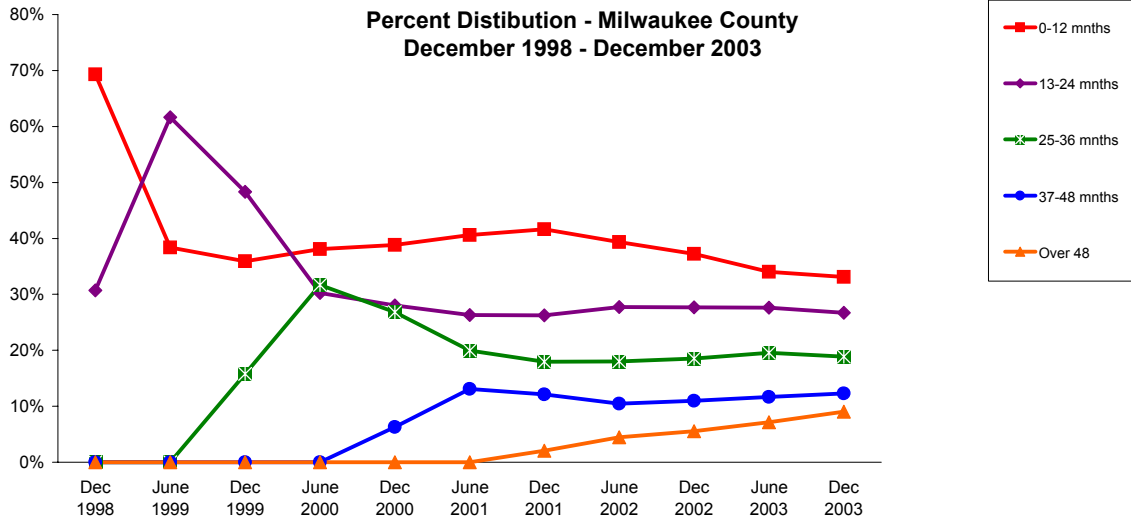
## Placement of W-2 Participants, March 2004



Source: CARES, Bureau of Workforce Information, Division of Workforce Solutions, Department of Workforce Development.

- \* Note:
- W-2 Transition (W-2T)..... A W-2 work-readiness practice placement for individuals who are unable to perform independent, self-sustaining work, but who are able to participate in work practice or other developmental activities and training up to their abilities.
  - Community Service Job (CSJ)..... A W-2 work-readiness practice placement designed to improve the employability of participants by providing work experience and training in the public and private sectors.
  - Trial Job (TJB)..... A W-2 subsidized employment position that provides work experience and training which may become permanent, unsubsidized employment. Paid directly to the employer.
  - Case Mgmt - Caretaker of a Newborn (CMC)..... A custodial parent of a child who is 12 weeks old or less and who meets the financial and non-financial eligibility requirements for W-2 employment positions.
  - Case Mgmt - Pregnancy (CMP)..... A participant with a medically verified pregnancy.
  - Case Mgmt - Service for Job Ready (CMS)..... Used for case management services for unemployed individuals who have been assessed as having the capability of obtaining immediate full-time employment.
  - Case Mgmt Follow-up (CMF)..... Used for case management services for participants who have moved up the W-2 ladder to unsubsidized employment.
  - Case Mgmt - Service for Working (CMU)..... Used for individuals working in unsubsidized employment who are without barriers to full-time employment.
  - Case Mgmt - Non-Custodial Parent (CMN)..... Used for case management services for non-custodial parents.
  - Case Mgmt - Minor Parent (CMM)..... Used for case management services for a custodial minor parent.

### Number of Months Served in W-2\*



**Number of Months Served in W-2 - Most Recent Six Months**

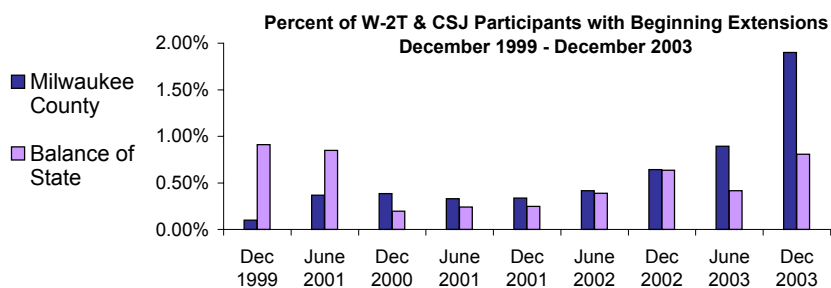
	Months	Oct 2003	Nov 2003	Dec 2003	Jan 2004	Feb 2004	Mar 2004
<b>Milwaukee County</b>	0-12	3983	3882	3915	3888	3942	3982
	13-24	3217	3191	3156	3099	3012	3015
	25-36	2271	2242	2231	2210	2263	2295
	37-48	1431	1411	1452	1455	1475	1517
	Over 48	954	1017	1071	1104	1164	1235
<b>Balance of State</b>	0-12	2580	2470	2499	2442	2348	2434
	13-24	629	626	632	629	637	673
	25-36	237	239	248	250	235	224
	37-48	62	66	69	72	78	73
	Over 48	22	22	25	24	25	26
<b>Statewide</b>	0-12	6240	6036	6115	6021	5987	6101
	13-24	3807	3788	3745	3685	3606	3642
	25-36	2518	2485	2489	2470	2504	2530
	37-48	1506	1492	1534	1541	1570	1610
	Over 48	995	1055	1114	1145	1205	1275

Source: CARES, Bureau of Workforce Information, Division of Workforce Solutions, Department of Workforce Development.

\*Note: Length of stay is determined for the W-2 participants in the report month by the number of total months a participant has been in W-2 since the beginning of the program.

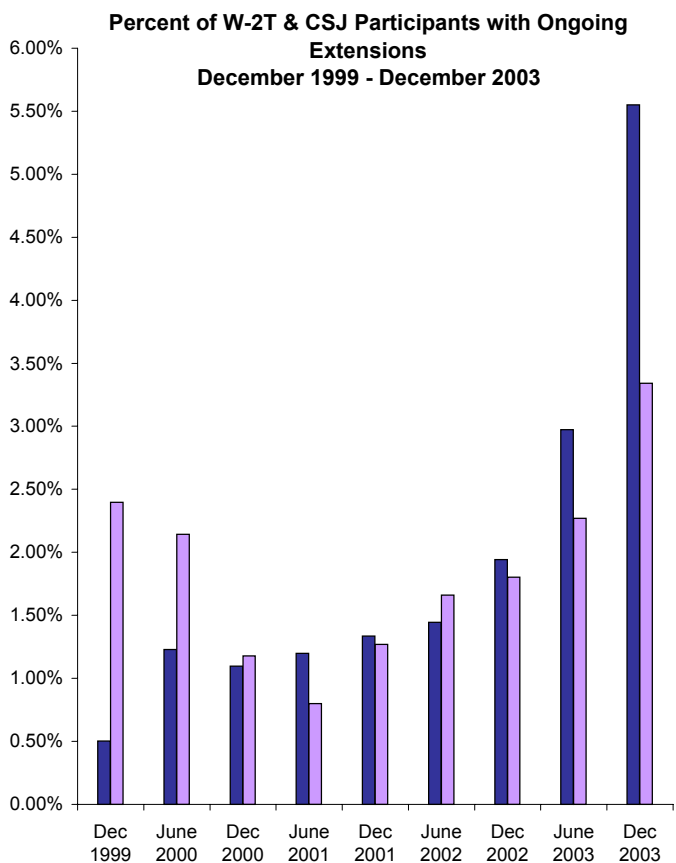
\*Note: Participants may be counted more than once if their geographic location changes from Milwaukee to Balance of State or vice versa.

## Extensions Granted for 24 Month Clocks\*



### Number of Beginning Extensions - Most Recent Six Months

	Oct 2003	Nov 2003	Dec 2003	Jan 2004	Feb 2004	Mar 2004
<b>Milwaukee County</b>	132	169	168	171	212	218
<b>Balance of State</b>	20	18	13	24	20	16
<b>Statewide</b>	152	187	181	195	232	234



### Number of Ongoing Extensions - Most Recent Six Months

	Oct 2003	Nov 2003	Dec 2003	Jan 2004	Feb 2004	Mar 2004
<b>Milwaukee County</b>	325	390	458	521	545	585
<b>Balance of State</b>	40	50	48	50	52	55
<b>Statewide</b>	365	440	506	571	597	640

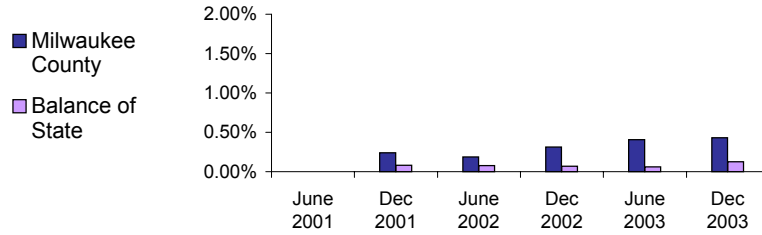
Source: CARES, Bureau of Workforce Information, Division of Workforce Solutions, Department of Workforce Development.

\*Note: Extensions can be granted after 24 months of participation in a W-2T or CSJ placement. Extensions are granted when the participant is nearing the 24th month of their placement clock and they qualify for extended eligibility by meeting specific required criteria.

\*Note: Participants may be counted more than once if the participant's extension lasts longer than six months. Ongoing Extensions are an end of the month count.

## Extensions Granted for 60 Month Clocks\*

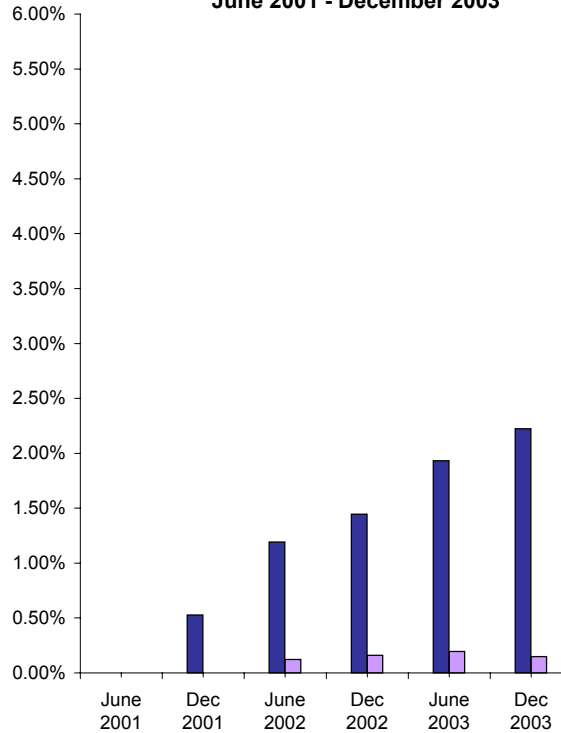
### Percent of Participants with Beginning Extensions June 2001 - December 2003



### Number of Beginning Extensions - Most Recent Six Months

	Oct 2003	Nov 2003	Dec 2003	Jan 2004	Feb 2004	Mar 2004
<b>Milwaukee County</b>	37	39	38	44	47	56
<b>Balance of State</b>	0	0	2	1	4	2
<b>Statewide</b>	37	39	40	45	51	58

### Percent of Participants with Ongoing Extensions June 2001 - December 2003



### Number of Ongoing Extensions - Most Recent Six Months

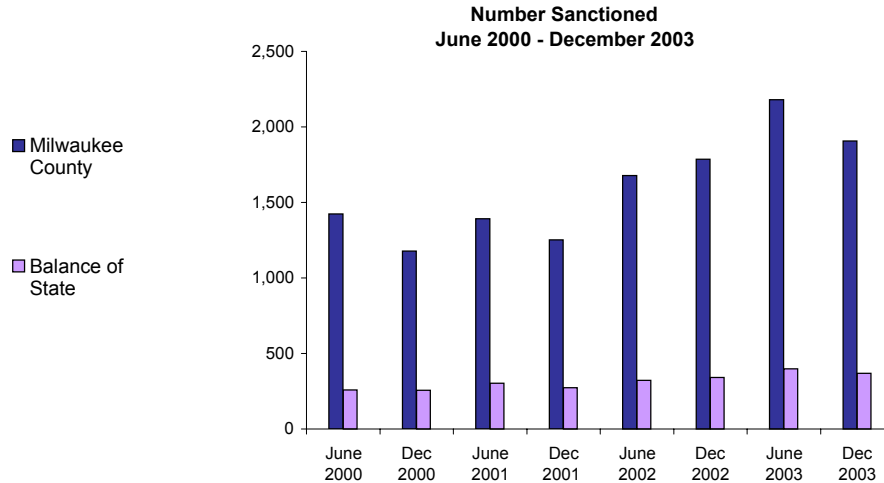
	Oct 2003	Nov 2003	Dec 2003	Jan 2004	Feb 2004	Mar 2004
<b>Milwaukee County</b>	181	199	196	204	220	250
<b>Balance of State</b>	3	1	3	3	6	8
<b>Statewide</b>	184	200	199	207	226	258

Source: CARES, Bureau of Workforce Information, Division of Workforce Solutions, Department of Workforce Development.

\*Note: Extensions can be granted after 60 months of lifetime participation. Extensions are granted when the participant is nearing the 60th month of their lifetime clock and they qualify for extended eligibility by meeting specific required criteria. The 60 month extensions first became relevant as of September 2001.

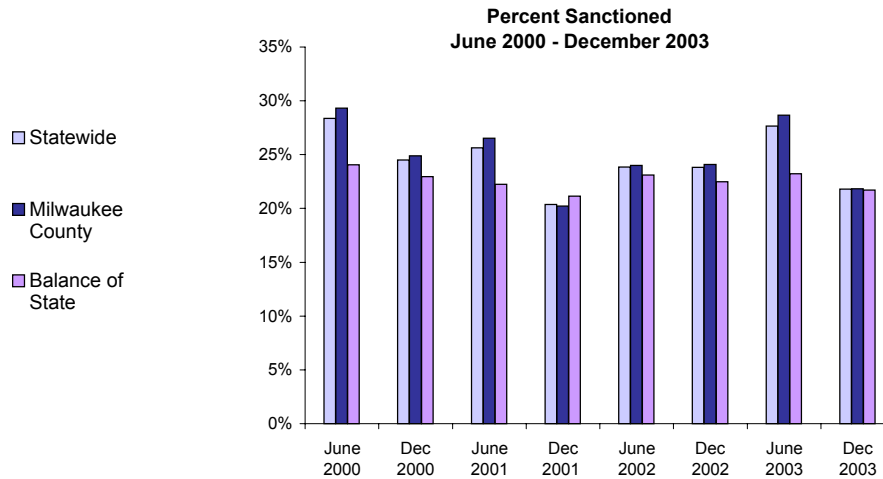
\*Note: Participants may be counted more than once if the participant's extension lasts longer than six months. Ongoing Extensions are an end of the month count.

## W-2T and CSJ Participants Who were Sanctioned\*



**Number Sanctioned - Most Recent Six Months**

	Oct 2003	Nov 2003	Dec 2003	Jan 2004	Feb 2004	Mar 2004
<b>Milwaukee County</b>	1,908	1,975	1,907	1,540	1,964	2,412
<b>Balance of State</b>	394	368	369	317	342	396
<b>Statewide</b>	2,302	2,343	2,276	1,857	2,306	2,808



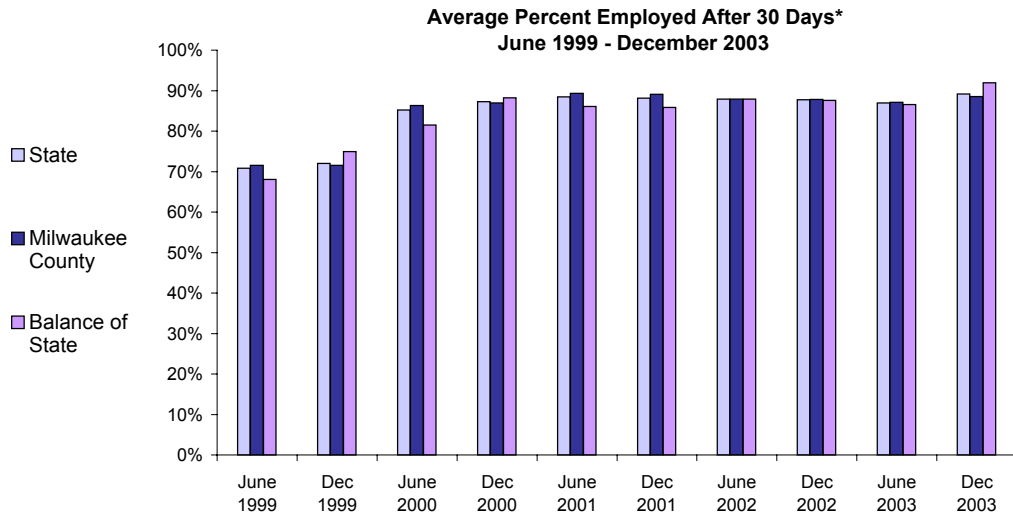
**Percent Sanctioned - Most Recent Six Months**

	Oct 2003	Nov 2003	Dec 2003	Jan 2004	Feb 2004	Mar 2004
<b>Milwaukee County</b>	23%	23%	22%	18%	21%	26%
<b>Balance of State</b>	23	22	22	19	20	23
<b>Statewide</b>	23%	23%	22%	18%	21%	25%

Source: CARES, Bureau of Workforce Information, Division of Workforce Solutions, Department of Workforce Development.

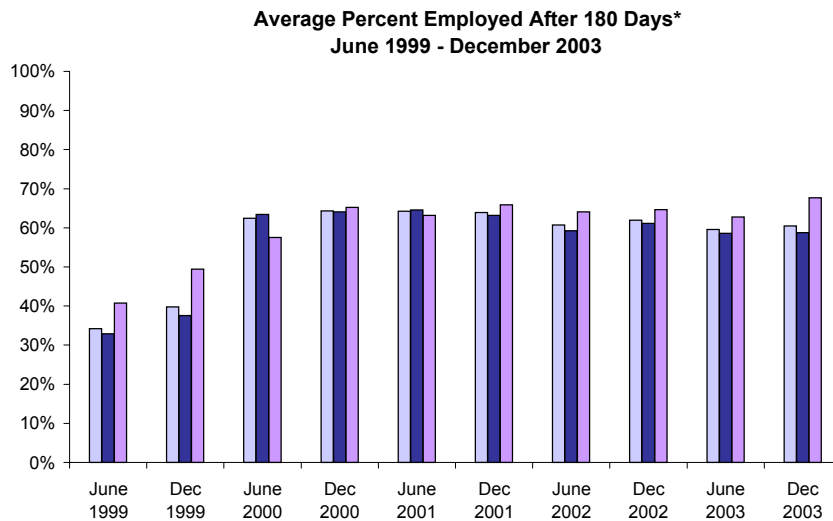
\* Note: Because sanction counts prior to September 1999 were counted differently they are not included in these graphs. The graphs on this page report information on the sanctionable population (W-2T and CSJ placements only). The data represented here are point in time during a month.

## W-2 Participants Employed After 30 and 180 Days



**Number Employed After 30 Days - Most Recent Six Months**

	Oct 2003	Nov 2003	Dec 2003	Jan 2004	Feb 2004	Mar 2004
<b>Milwaukee County</b>	399	244	212	212	249	292
<b>Balance of State</b>	93	74	55	41	39	62
<b>Statewide</b>	492	318	267	253	288	354



**Number Employed After 180 Days - Most Recent Six Months**

	Oct 2003	Nov 2003	Dec 2003	Jan 2004	Feb 2004	Mar 2004
<b>Milwaukee County</b>	211	194	178	227	237	255
<b>Balance of State</b>	62	51	58	29	37	63
<b>Statewide</b>	273	245	236	256	274	318

Source: CARES, Bureau of Workforce Information, Division of Workforce Solutions, Department of Workforce Development.

\*Note: The percent employed is a six month average of the months prior to the date in the graph. Entered employments are unsubsidized employments that began during the W-2 episode. Follow-throughs that meet the criteria are recorded for entered employments as of the 30th or 180th day after the start of an entered employment. The recorded results of the follow-through can be no contact, employed, or not employed.