



## Wisconsin W-2 Participants in Paid Placements\*

Number of Participants in Paid Placements					
	One Year Ago	Last Month	This Month	Change in Most Recent Two Months	
	Feb 2003			Jan 2004	Feb 2004
<b>Paid Participants:</b>					
Milwaukee County	7,710	9,634	9,819	185	1.9%
Balance of State	2,262	2,436	2,410	-26	-1.1%
Statewide Caseload	9,972	12,070	12,229	159	1.3%
<b>Milwaukee County Regions: Feb 2003</b>		<b>Jan 2004</b>	<b>Feb 2004</b>	<b>Number</b>	<b>Percent</b>
Region 1 - YW Works	723	998	1,040	42	4.1%
Region 2 - UMOS	1,029	1,155	1,120	-35	-3.1%
Region 3 - OIC	1,382	2,033	2,073	39	1.9%
Region 4 - YW Works	1,258	1,589	1,617	28	1.8%
Region 5 - UMOS	1,943	2,402	2,457	55	2.2%
Region 6 - Maximus	1,376	1,456	1,511	55	3.7%
<b>Milwaukee County Total:</b>	<b>7,710</b>	<b>9,634</b>	<b>9,819</b>	<b>185</b>	<b>1.9%</b>

Source: CARES, Bureau of Workforce Information, Division of Workforce Solutions, Department of Workforce Development.

\*Note: The paid caseload includes the following categories of placements:

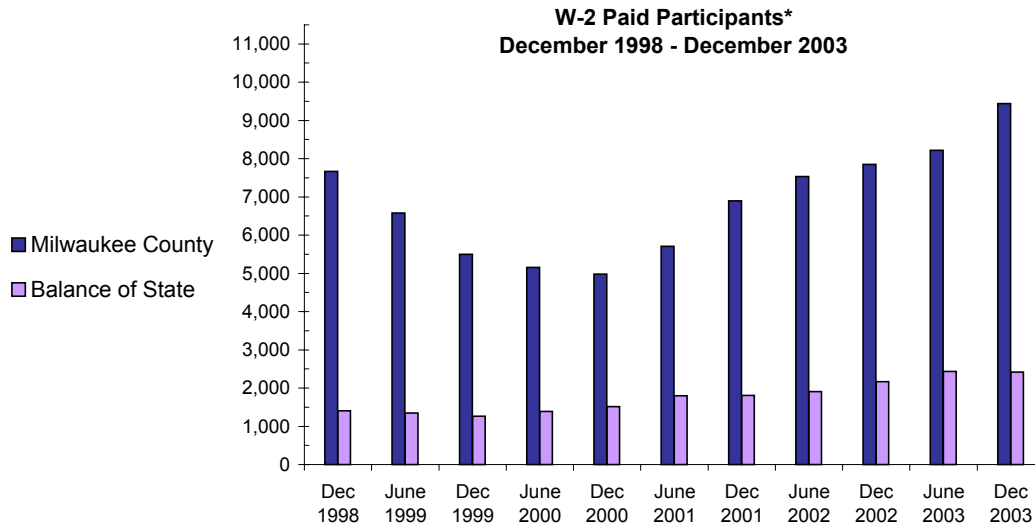
W-2 Transition (W-2T)..... A W-2 work-readiness practice placement for individuals who are unable to perform independent, self-sustaining work, but who are able to participate in work practice or other developmental activities and training up to their abilities.

Community Service Job (CSJ)..... A W-2 work-readiness practice placement designed to improve the employability of participants by providing work experience and training in the public and private sectors.

Trial Job (TJB)..... A W-2 subsidized employment position that provides work experience and training which may become permanent, unsubsidized employment. Paid directly to the employer.

Case Mgmt- Caretaker of Newborn A custodial parent of a child who is 12 weeks old or less and who meets the financial and non-financial eligibility requirements for W-2 employment positions.

## W-2 Paid Participants and Benefits Paid

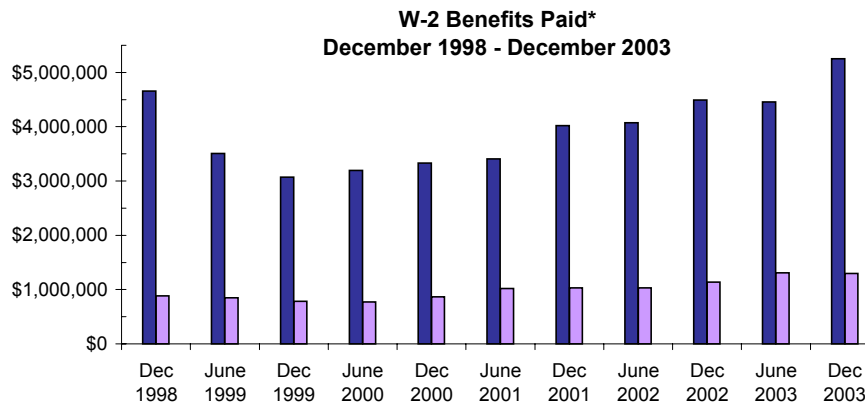


### W-2 Paid Participants - Most Recent Six Months

	Sept 2003	Oct 2003	Nov 2003	Dec 2003	Jan 2004	Feb 2004
<b>Milwaukee County</b>	8,838	9,111	9,190	9,443	9,634	9,819
<b>Balance of State</b>	2,449	2,441	2,362	2,418	2,436	2,410
<b>Statewide</b>	11,287	11,552	11,552	11,861	12,070	12,229

Source: CARES, Bureau of Workforce Information, Division of Workforce Solutions, Department of Workforce Development

\*Note: The paid participants included in this count are participants who were in a paid placement during the report month.



### W-2 Benefits Paid - Most Recent Six Months

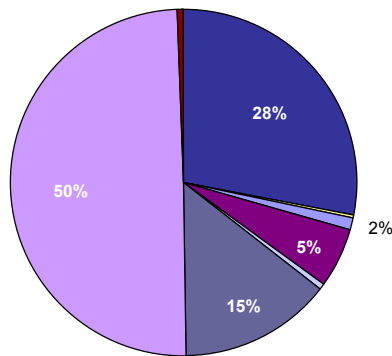
	Sept 2003	Oct 2003	Nov 2003	Dec 2003	Jan 2004	Feb 2004
<b>Milwaukee County</b>	\$4,880,262	\$5,096,424	\$5,036,656	\$5,252,710	\$5,438,165	\$5,509,954
<b>Balance of State</b>	1,337,578	1,340,751	1,302,223	1,299,401	1,310,877	1,307,764
<b>Statewide</b>	\$6,217,840	\$6,437,175	\$6,338,879	\$6,552,111	\$6,749,042	\$6,817,718

Source: CARES, Bureau of Workforce Information, Division of Workforce Solutions, Department of Workforce Development

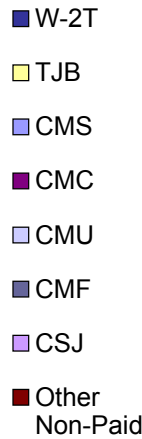
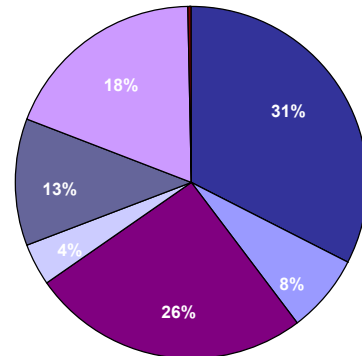
\*Note: The benefits paid are the total monthly net benefits after sanctions and recoupments are applied.

## Placement of W-2 Participants, January 2004

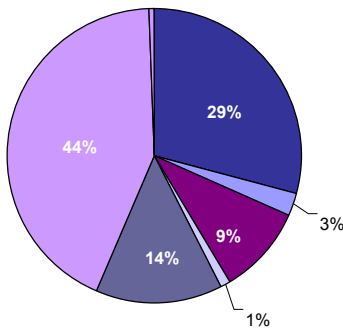
**Milwaukee County**



**Balance of State**



**Statewide**



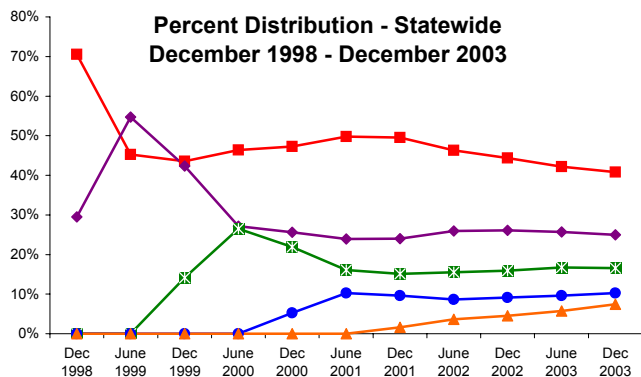
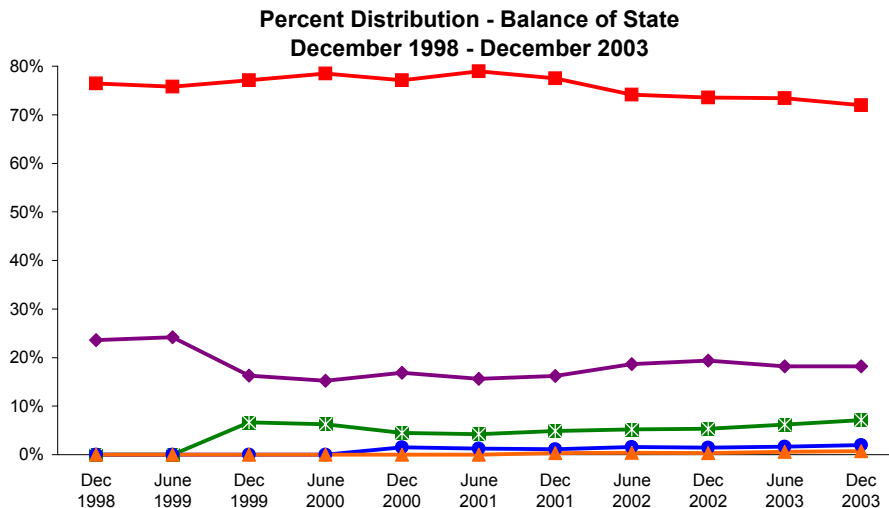
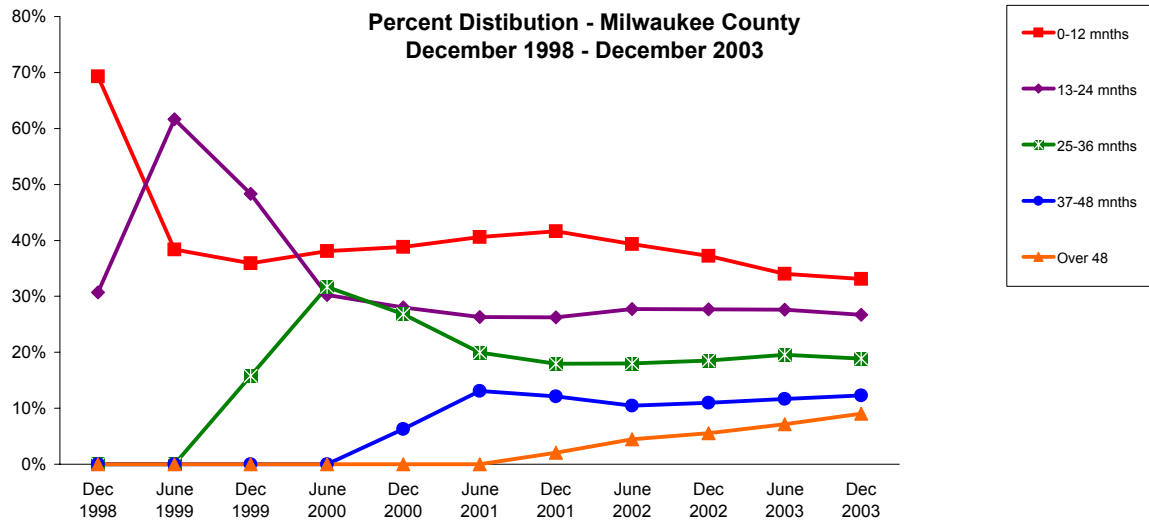
**Number and Percent of W-2 Participants in Placements**

	Milwaukee County		BOS		Statewide	
	#	%	#	%	#	%
W-2T	3,307	34%	1,018	42%	4,325	35%
CSJ	5,850	60	589	24	6,439	53
TJB	13	0	1	0	14	0
CMC	649	7	802	33	1,451	12
<b>Paid Total</b>	<b>9,819</b>	<b>84%</b>	<b>2,410</b>	<b>77%</b>	<b>12,229</b>	<b>82%</b>
CMS	151	8	222	31	373	14
CMU	37	2	126	17	163	6
CMF	1,677	87	367	51	2,044	77
Other Non-Paid	53	3	10	1	63	2
<b>Non-Paid Total</b>	<b>1,918</b>	<b>16%</b>	<b>725</b>	<b>23%</b>	<b>2,643</b>	<b>18%</b>
<b>Grand Total</b>	<b>11,737</b>		<b>3,135</b>		<b>14,872</b>	

Source: CARES, Bureau of Workforce Information, Division of Workforce Solutions, Department of Workforce Development.

- \* Note:
- W-2 Transition (W-2T)..... A W-2 work-readiness practice placement for individuals who are unable to perform independent, self-sustaining work, but who are able to participate in work practice or other developmental activities and training up to their abilities.
  - Community Service Job (CSJ)..... A W-2 work-readiness practice placement designed to improve the employability of participants by providing work experience and training in the public and private sectors.
  - Trial Job (TJB)..... A W-2 subsidized employment position that provides work experience and training which may become permanent, unsubsidized employment. Paid directly to the employer.
  - Case Mgmt - Caretaker of a Newborn (CMC)..... A custodial parent of a child who is 12 weeks old or less and who meets the financial and non-financial eligibility requirements for W-2 employment positions.
  - Case Mgmt - Pregnancy (CMP)..... A participant with a medically verified pregnancy.
  - Case Mgmt - Service for Job Ready (CMS)..... Used for case management services for unemployed individuals who have been assessed as having the capability of obtaining immediate full-time employment.
  - Case Mgmt Follow-up (CMF)..... Used for case management services for participants who have moved up the W-2 ladder to unsubsidized employment.
  - Case Mgmt - Service for Working (CMU)..... Used for individuals working in unsubsidized employment who are without barriers to full-time employment.
  - Case Mgmt - Non-Custodial Parent (CMN)..... Used for case management services for non-custodial parents.
  - Case Mgmt - Minor Parent (CMM)..... Used for case management services for a custodial minor parent.

### Number of Months Served in W-2\*



**Number of Months Served in W-2 - Most Recent Six Months**

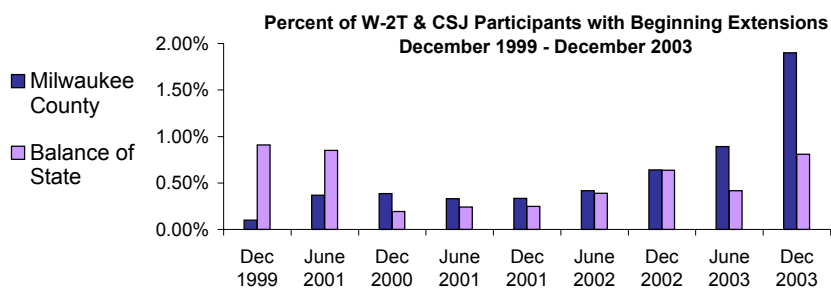
	Months	Sept 2003	Oct 2003	Nov 2003	Dec 2003	Jan 2004	Feb 2005
<b>Milwaukee County</b>	0-12	3918	3983	3882	3915	3888	3942
	13-24	3168	3217	3191	3156	3099	3012
	25-36	2208	2271	2242	2231	2210	2263
	37-48	1360	1431	1411	1452	1455	1475
	Over 48	910	954	1017	1071	1104	1164
<b>Balance of State</b>	0-12	2578	2580	2470	2499	2442	2348
	13-24	642	629	626	632	629	637
	25-36	238	237	239	248	250	235
	37-48	62	62	66	69	72	78
	Over 48	23	22	22	25	24	25
<b>Statewide</b>	0-12	6168	6240	6036	6115	6021	5987
	13-24	3780	3807	3788	3745	3685	3606
	25-36	2455	2518	2485	2489	2470	2504
	37-48	1437	1506	1492	1534	1541	1570
	Over 48	950	995	1055	1114	1145	1205

Source: CARES, Bureau of Workforce Information, Division of Workforce Solutions, Department of Workforce Development.

\*Note: Length of stay is determined for the W-2 participants in the report month by the number of total months a participant has been in W-2 since the beginning of the program.

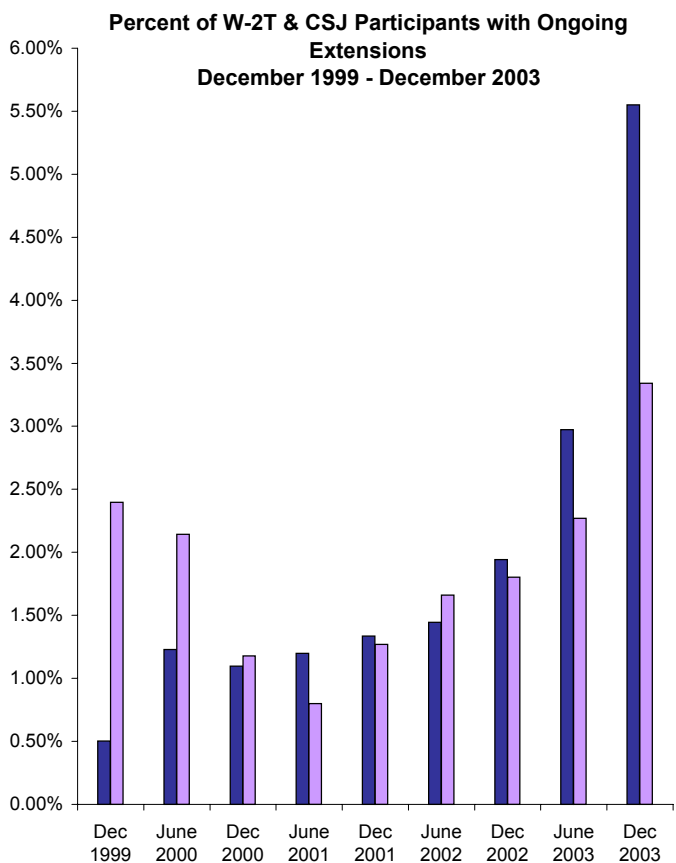
\*Note: Participants may be counted more than once if their geographic location changes from Milwaukee to Balance of State or vice versa.

## Extensions Granted for 24 Month Clocks\*



### Number of Beginning Extensions - Most Recent Six Months

	Sept 2003	Oct 2003	Nov 2003	Dec 2003	Jan 2004	Feb 2004
<b>Milwaukee County</b>	117	132	169	168	171	212
<b>Balance of State</b>	13	20	18	13	24	20
<b>Statewide</b>	130	152	187	181	195	232



### Number of Ongoing Extensions - Most Recent Six Months

	Sept 2003	Oct 2003	Nov 2003	Dec 2003	Jan 2004	Feb 2004
<b>Milwaukee County</b>	323	325	390	458	521	545
<b>Balance of State</b>	39	40	50	48	50	52
<b>Statewide</b>	362	365	440	506	571	597

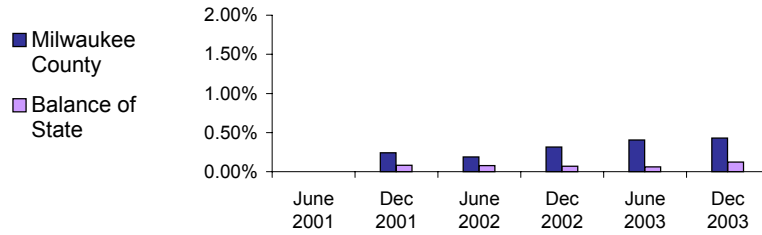
Source: CARES, Bureau of Workforce Information, Division of Workforce Solutions, Department of Workforce Development.

\*Note: Extensions can be granted after 24 months of participation in a W-2T or CSJ placement. Extensions are granted when the participant is nearing the 24th month of their placement clock and they qualify for extended eligibility by meeting specific required criteria.

\*Note: Participants may be counted more than once if the participant's extension lasts longer than six months. Ongoing Extensions are an end of the month count.

## Extensions Granted for 60 Month Clocks\*

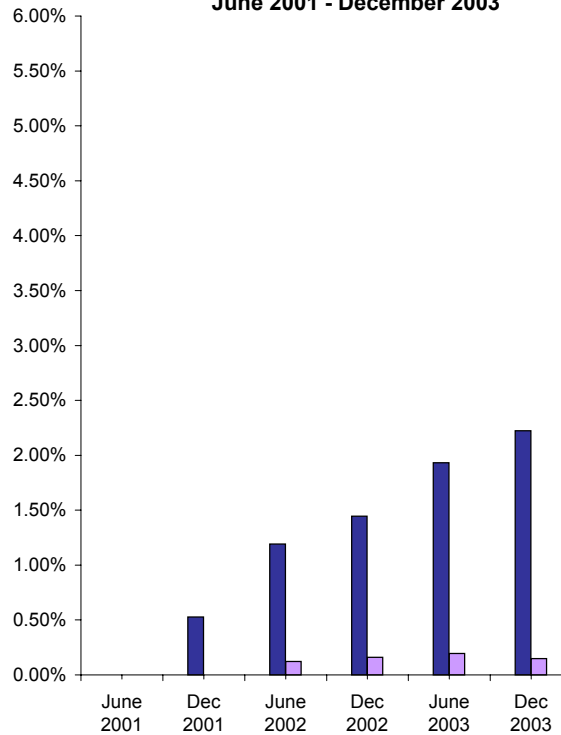
### Percent of Participants with Beginning Extensions June 2001 - December 2003



### Number of Beginning Extensions - Most Recent Six Months

	Sept 2003	Oct 2003	Nov 2003	Dec 2003	Jan 2004	Feb 2004
<b>Milwaukee County</b>	29	37	39	38	44	47
<b>Balance of State</b>	2	0	0	2	1	4
<b>Statewide</b>	31	37	39	40	45	51

### Percent of Participants with Ongoing Extensions June 2001 - December 2003



### Number of Ongoing Extensions - Most Recent Six Months

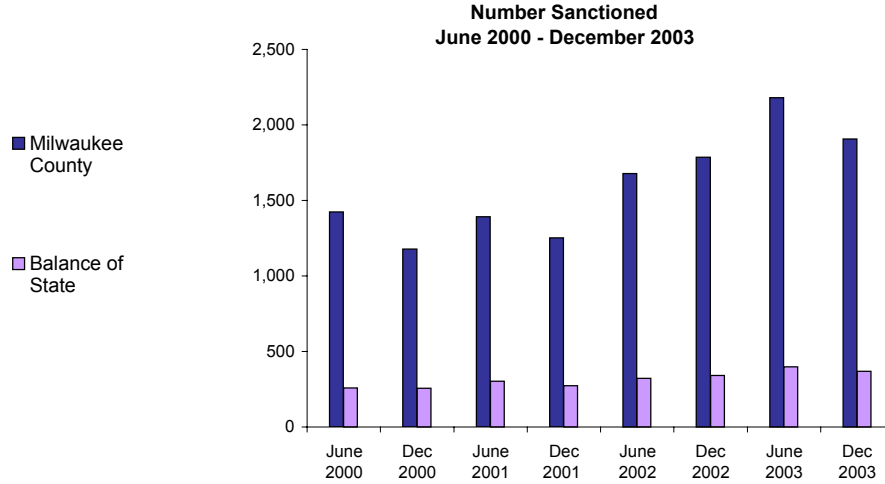
	Sept 2003	Oct 2003	Nov 2003	Dec 2003	Jan 2004	Feb 2004
<b>Milwaukee County</b>	174	181	199	196	204	220
<b>Balance of State</b>	3	3	1	3	3	6
<b>Statewide</b>	177	184	200	199	207	226

Source: CARES, Bureau of Workforce Information, Division of Workforce Solutions, Department of Workforce Development.

\*Note: Extensions can be granted after 60 months of lifetime participation. Extensions are granted when the participant is nearing the 60th month of their lifetime clock and they qualify for extended eligibility by meeting specific required criteria. The 60 month extensions first became relevant as of September 2001.

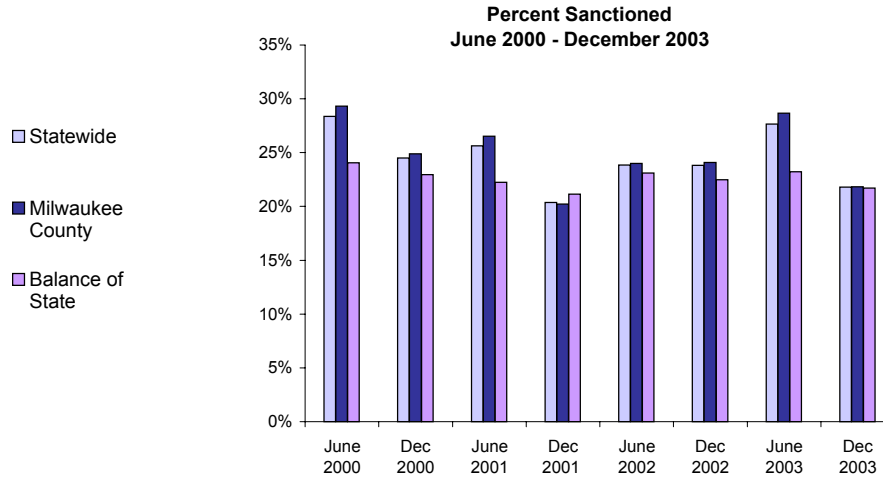
\*Note: Participants may be counted more than once if the participant's extension lasts longer than six months. Ongoing Extensions are an end of the month count.

**W-2T and CSJ Participants Who were Sanctioned\***



**Number Sanctioned - Most Recent Six Months**

	Sept 2003	Oct 2003	Nov 2003	Dec 2003	Jan 2004	Feb 2004
<b>Milwaukee County</b>	1,881	1,908	1,975	1,907	1,540	1,964
<b>Balance of State</b>	407	394	368	369	317	342
<b>Statewide</b>	2,288	2,302	2,343	2,276	1,857	2,306



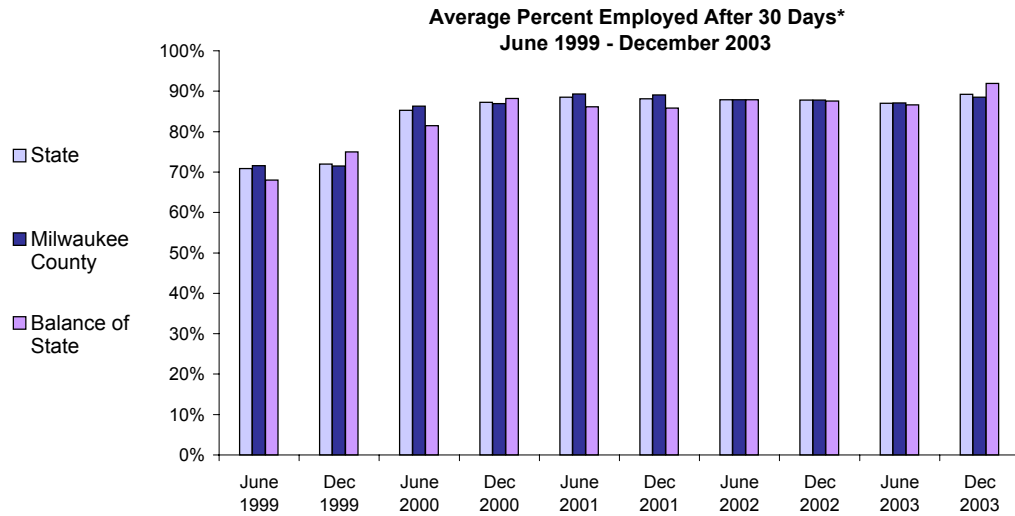
**Percent Sanctioned - Most Recent Six Months**

	Sept 2003	Oct 2003	Nov 2003	Dec 2003	Jan 2004	Feb 2004
<b>Milwaukee County</b>	23%	23%	23%	22%	18%	21%
<b>Balance of State</b>	23	23	22	22	19	20
<b>Statewide</b>	23%	23%	23%	22%	18%	21%

Source: CARES, Bureau of Workforce Information, Division of Workforce Solutions, Department of Workforce Development.

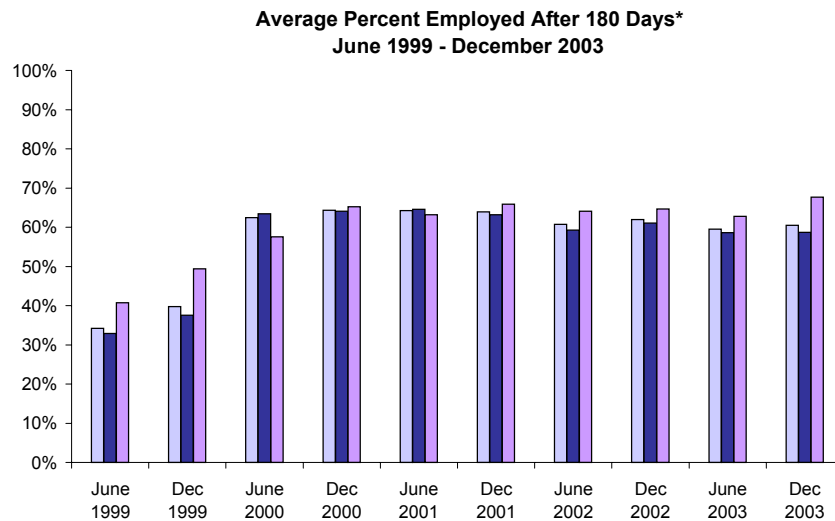
\* Note: Because sanction counts prior to September 1999 were counted differently they are not included in these graphs. The graphs on this page report information on the sanctionable population (W-2T and CSJ placements only). The data represented here are point in time during a month.

## W-2 Participants Employed After 30 and 180 Days



**Number Employed After 30 Days - Most Recent Six Months**

	Sept 2003	Oct 2003	Nov 2003	Dec 2003	Jan 2004	Feb 2004
<b>Milwaukee County</b>	322	399	244	212	212	249
<b>Balance of State</b>	79	93	74	55	41	39
<b>Statewide</b>	401	492	318	267	253	288



**Number Employed After 180 Days - Most Recent Six Months**

	Sept 2003	Oct 2003	Nov 2003	Dec 2003	Jan 2004	Feb 2004
<b>Milwaukee County</b>	217	211	194	178	227	237
<b>Balance of State</b>	54	62	51	58	29	37
<b>Statewide</b>	271	273	245	236	256	274

Source: CARES, Bureau of Workforce Information, Division of Workforce Solutions, Department of Workforce Development.

\*Note: The percent employed is a six month average of the months prior to the date in the graph. Entered employments are unsubsidized employments that began during the W-2 episode. Follow-throughs that meet the criteria are recorded for entered employments as of the 30th or 180th day after the start of an entered employment. The recorded results of the follow-through can be no contact, employed, or not employed.