

Wisconsin Works (W-2) Critical Indicators October 2003

Wisconsin W-2 Participants in Paid Placements*

Number of Participants in Paid Placements					
	One Year Ago	Last Month	This Month	Change in Most Recent Two Months	
	Oct-02	Sep-03	Oct-03	Number	Percent
Paid Participants:					
Milwaukee County	8,016	8,838	9,111	273	3.0%
Balance of State	2,125	2,449	2,441	-8	-0.3%
Statewide Caseload	10,141	11,287	11,552	265	2.3%
Milwaukee County Regions:	Oct-02	Sep-03	Oct-03	Number	Percent
Region 1 - YW Works	759	831	887	55	6.2%
Region 2 - UMOS	1,008	1,125	1,161	36	3.1%
Region 3 - OIC	1,744	1,840	1,914	74	3.9%
Region 4 - YW Works	1,307	1,414	1,431	17	1.2%
Region 5 - UMOS	1,835	2,246	2,293	46	2.0%
Region 6 - Maximus	1,363	1,383	1,426	43	3.0%
Milwaukee County Total:	8,016	8,838	9,111	273	3.0%

Source: CARES, Bureau of Workforce Information, Division of Workforce Solutions, Department of Workforce Development.

*Note: The paid caseload includes the following categories of placements:

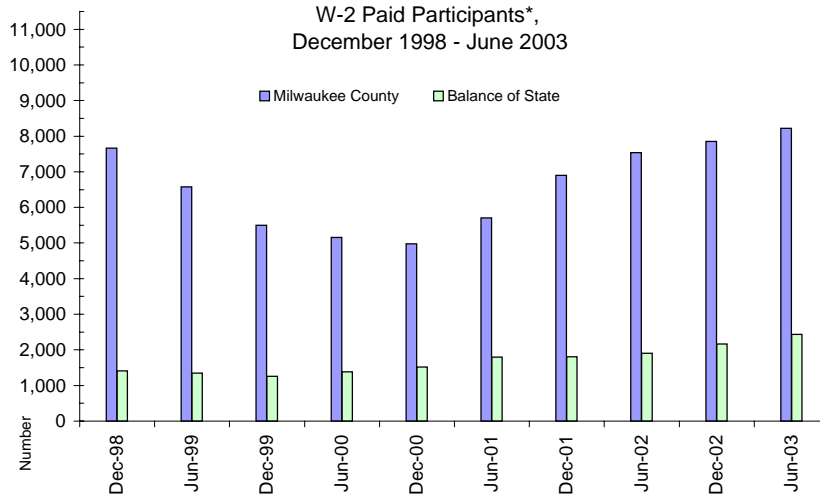
W-2 Transition (W-2T)..... A W-2 work-readiness practice placement for individuals who are unable to perform independent, self-sustaining work, but who are able to participate in work practice or other developmental activities and training up to their abilities.

Community Service Job (CSJ)..... A W-2 work-readiness practice placement designed to improve the employability of participants by providing work experience and training in the public and private sectors.

Trial Job (TJB)..... A W-2 subsidized employment position that provides work experience and training which may become permanent, unsubsidized employment. Paid directly to the employer.

Case Mgmt- Caretaker of Newborn A custodial parent of a child who is 12 weeks old or less and who meets the financial and non-financial eligibility requirements for W-2 employment positions.

W-2 Paid Participants and Benefits Paid

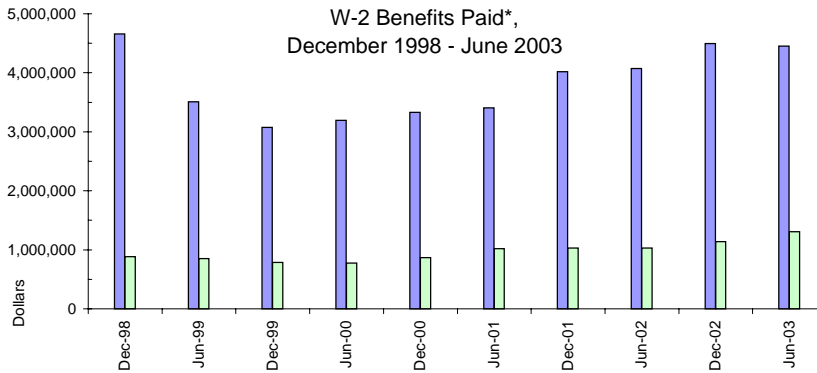


W-2 Paid Participants - Most Recent Six Months

	May-03	Jun-03	Jul-03	Aug-03	Sep-03	Oct-03
Milwaukee County	8,078	8,220	8,537	8,708	8,838	9,111
Bal. of State	2,381	2,434	2,516	2,470	2,449	2,441
Statewide	10,459	10,654	11,053	11,178	11,287	11,552

Source: CARES, Bureau of Workforce Information, Division of Workforce Solutions, Department of Workforce Development

*Note: The paid participants included in this count are participants who were in a paid placement during the report month.



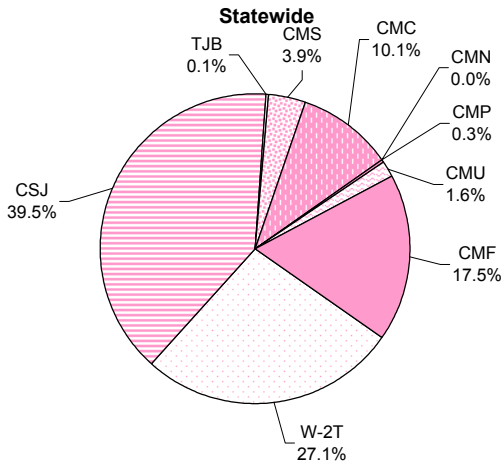
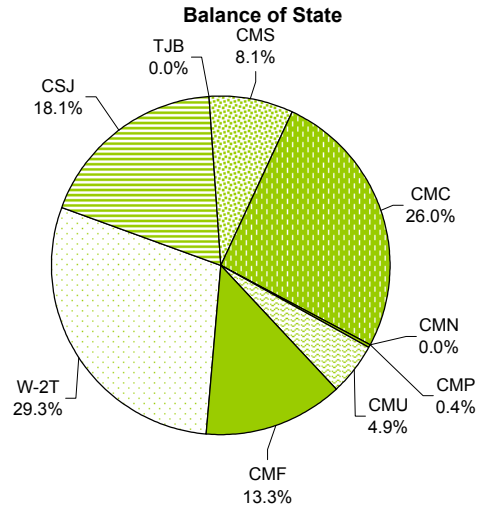
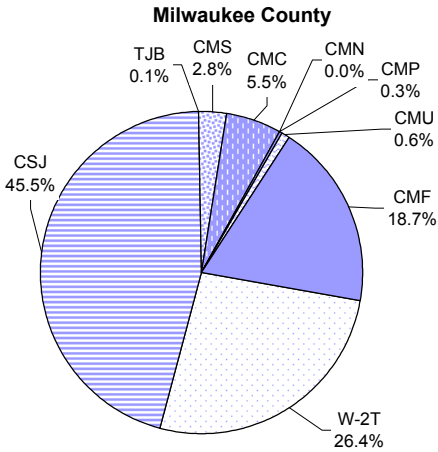
W-2 Benefits Paid - Most Recent Six Months

	May-03	Jun-03	Jul-03	Aug-03	Sep-03	Oct-03
Milwaukee County	\$ 4,341,919	\$ 4,454,168	\$ 4,621,901	\$ 4,638,336	\$ 4,880,262	\$ 5,096,424
Bal. of State	1,279,956	1,306,459	1,281,624	1,313,998	1,337,578	1,340,751
Statewide	\$ 5,621,875	\$ 5,760,627	\$ 5,903,525	\$ 5,952,334	\$ 6,217,840	\$ 6,437,175

Source: CARES, Bureau of Workforce Information, Division of Workforce Solutions, Department of Workforce Development

*Note: The benefits paid are the total monthly net benefits after sanctions and recoupments are applied.

Placement of W-2 Participants, October 2003



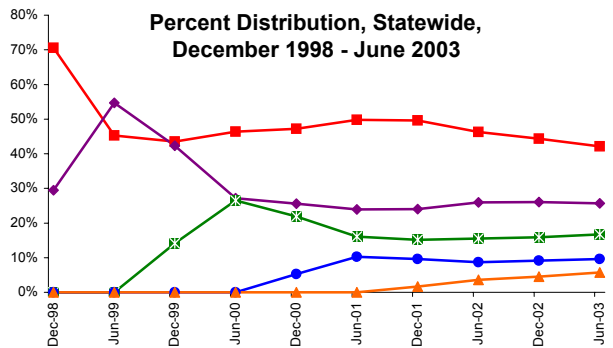
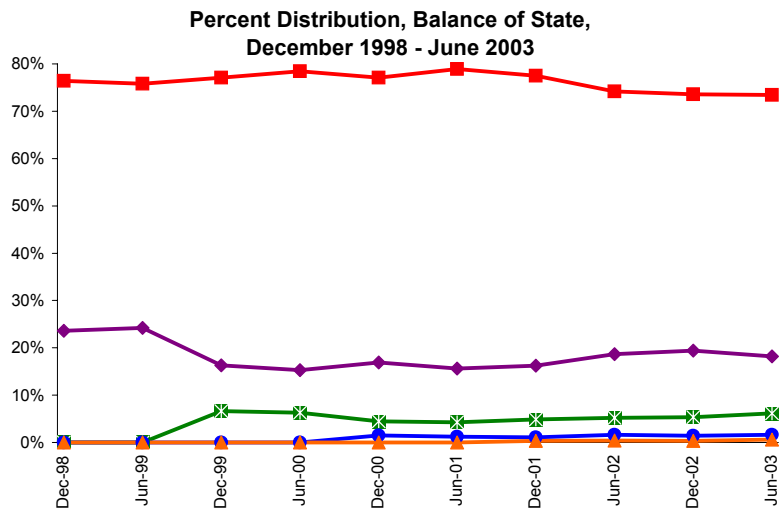
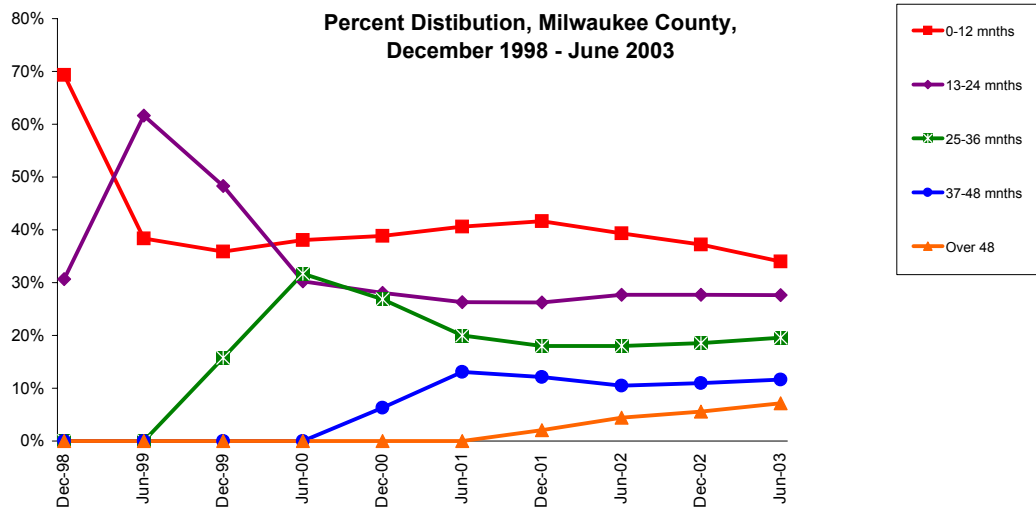
Number and Percent of W-2 Participants in Placements

	Milw Cnty		BOS		Statewide	
	#	%	#	%	#	%
W-2T	3,103	34%	974	40%	4,077	35%
CSJ	5,342	59	602	25	5,944	51
TJB	15	0	1	0	16	0
CMC	651	7	864	35	1,515	13
Paid Total	9,111	78%	2,441	73%	11,552	77%
CMS	325	12	268	30	593	17
CMN	0	0	0	0	0	0
CMP	35	1	12	1	47	1
CMU	75	3	162	18	237	7
CMF	2,193	83	444	50	2,637	75
Non-Paid Total	2,628	22%	886	27%	3,514	23%
Grand Total	11,739	100%	3,327	100%	15,066	100%

Source: CARES, Bureau of Workforce Information, Division of Workforce Solutions, Department of Workforce Development.

- * Note: W-2 Transition (W-2T).....A W-2 work-readiness practice placement for individuals who are unable to perform independent, self-sustaining work, but who are able to participate in work practice or other developmental activities and training up to their abilities.
- Community Service Job (CSJ)..... A W-2 work-readiness practice placement designed to improve the employability of participants by providing work experience and training in the public and private sectors.
- Trial Job (TJB).....A W-2 subsidized employment position that provides work experience and training which may become permanent, unsubsidized employment. Paid directly to the employer.
- Case Mgmt - Caretaker of a Newborn (CMC)..... A custodial parent of a child who is 12 weeks old or less and who meets the financial and non-financial eligibility requirements for W-2 employment positions.
- Case Mgmt - Pregnancy (CMP)..... A participant with a medically verified pregnancy.
- Case Mgmt - Service for Job Ready (CMS)..... Used for case management services for unemployed individuals who have been assessed as having the capability of obtaining immediate full-time employment.
- Case Mgmt Follow-up (CMF)..... Used for case management services for participants who have moved up the W-2 ladder to unsubsidized employment.
- Case Mgmt - Service for Working (CMU)..... Used for individuals working in unsubsidized employment who are without barriers to full-time employment.
- Case Mgmt - Non-Custodial Parent (CMN)..... Used for case management services for non-custodial parents.

Number of Months Served in W-2*



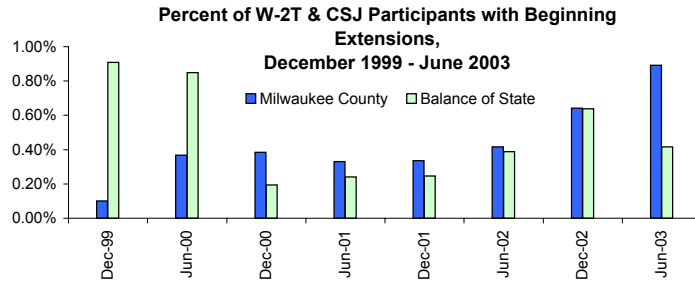
		Number of Months Served in W-2 - Most Recent Six Months						
		Mnths	May-03	Jun-03	Jul-03	Aug-03	Sep-03	Oct-03
Milw. County	0-12		3795	3782	3854	3886	3918	3983
	13-24		3046	3069	3092	3076	3168	3217
	25-36		2181	2176	2232	2189	2208	2271
	37-48		1288	1296	1299	1323	1360	1431
	Over 48		758	793	858	887	910	954
Bal. of State	0-12		2520	2569	2619	2582	2578	2580
	13-24		637	636	627	631	642	629
	25-36		211	216	222	226	238	237
	37-48		58	57	54	60	62	62
	Over 48		20	21	23	21	23	22
Statewide	0-12		6011	6033	6166	6155	6168	6240
	13-24		3656	3682	3707	3680	3780	3807
	25-36		2404	2398	2456	2430	2455	2518
	37-48		1368	1375	1369	1393	1437	1506
	Over 48		786	824	877	912	950	995

Source: CARES, Bureau of Workforce Information, Division of Workforce Solutions, Department of Workforce Development.

*Note: Length of stay is determined for the W-2 participants in the report month by the number of total months a participant has been in W-2 since the beginning of the program.

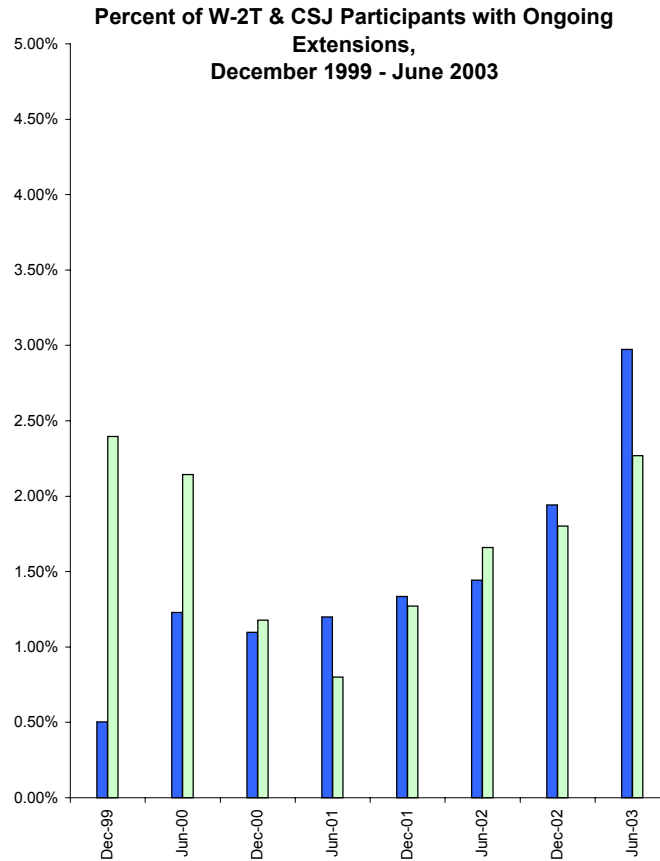
*Note: Participants may be counted more than once if their geographic location changes from Milwaukee to Balance of State or vice versa.

Extensions Granted for 24 Month Clocks*



Number of Beginning Extensions - Most Recent Six Months

	May-03	Jun-03	Jul-03	Aug-03	Sep-03	Oct-03
Milwaukee County	83	68	99	111	117	132
Bal. of State	15	7	10	17	13	20
Statewide	98	75	109	128	130	152



Number of Ongoing Extensions - Most Recent Six Months

	May-03	Jun-03	Jul-03	Aug-03	Sep-03	Oct-03
Milwaukee County	199	208	242	269	323	325
Bal. of State	37	34	32	36	39	40
Statewide	236	242	274	305	362	365

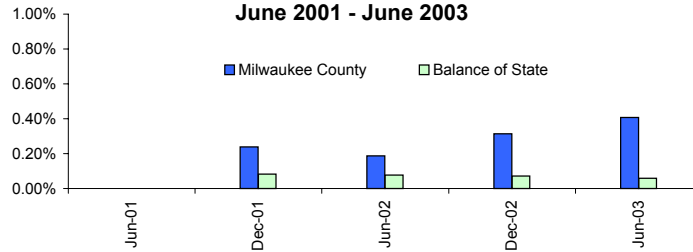
Source: CARES, Bureau of Workforce Information, Division of Workforce Solutions, Department of Workforce Development.

*Note: Extensions can be granted after 24 months of participation in a W-2T or CSJ placement. Extensions are granted when the participant is nearing the 24th month of their placement clock and they qualify for extended eligibility by meeting specific required criteria.

*Note: Participants may be counted more than once if the participant's extension lasts longer than six months. Ongoing Extensions are an end of the month count.

Extensions Granted for 60 Month Clocks*

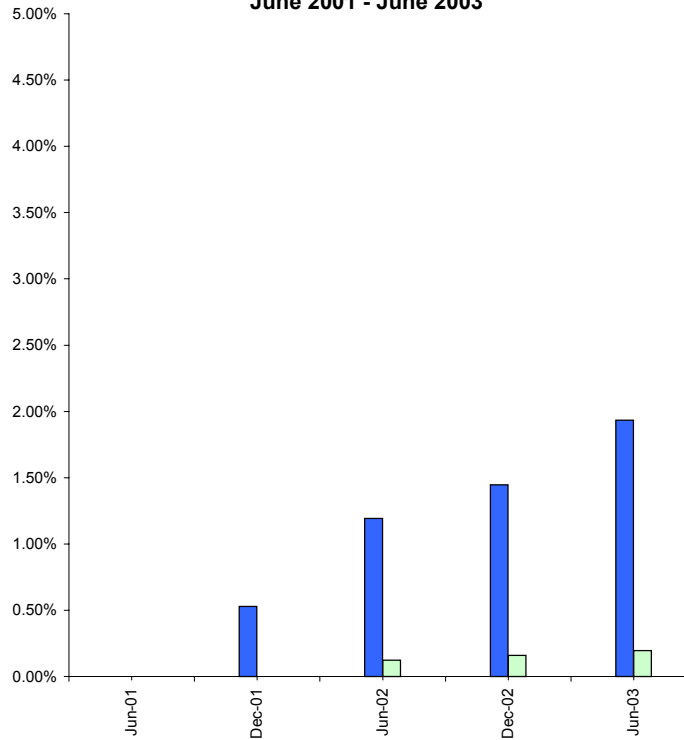
Percent of Participants with Beginning Extensions, June 2001 - June 2003



Number of Beginning Extensions - Most Recent Six Months

	May-03	Jun-03	Jul-03	Aug-03	Sep-03	Oct-03
Milwaukee County	32	31	34	38	29	37
Bal. of State	1	1	0	0	2	0
Statewide	33	32	34	38	31	37

Percent of Participants with Ongoing Extensions, June 2001 - June 2003



Number of Ongoing Extensions - Most Recent Six Months

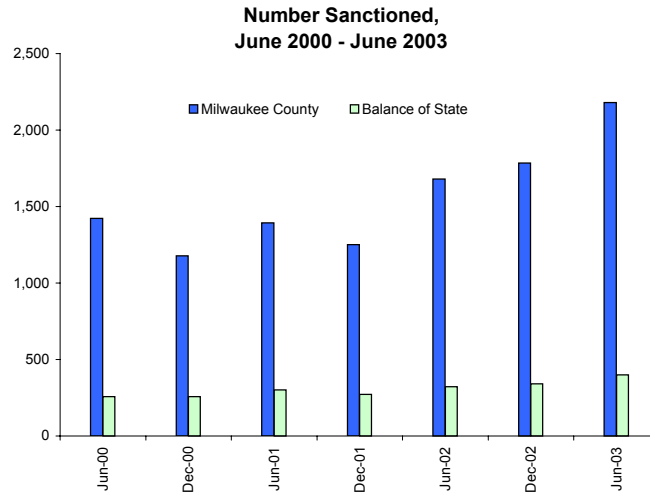
	May-03	Jun-03	Jul-03	Aug-03	Sep-03	Oct-03
Milwaukee County	134	146	154	169	174	181
Bal. of State	3	4	4	4	3	3
Statewide	137	150	158	173	177	184

Source: CARES, Bureau of Workforce Information, Division of Workforce Solutions, Department of Workforce Development.

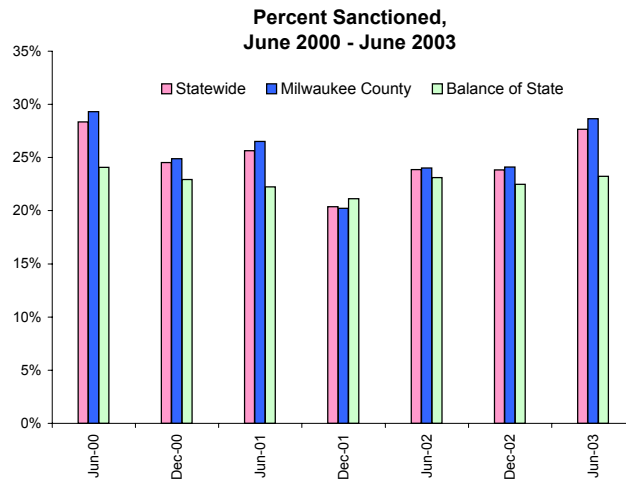
*Note: Extensions can be granted after 60 months of lifetime participation. Extensions are granted when the participant is nearing the 60th month of their lifetime clock and they qualify for extended eligibility by meeting specific required criteria. The 60 month extensions first became relevant as of September 2001.

*Note: Participants may be counted more than once if the participant's extension lasts longer than six months. Ongoing Extensions are an end of the month count.

W-2T and CSJ Participants Who were Sanctioned*



	May-03	Jun-03	Jul-03	Aug-03	Sep-03	Oct-03
Milwaukee County	2,160	2,180	2,303	1,990	1,881	1,908
Bal. of State	416	399	408	451	407	394
Statewide	2,576	2,579	2,711	2,441	2,288	2,302

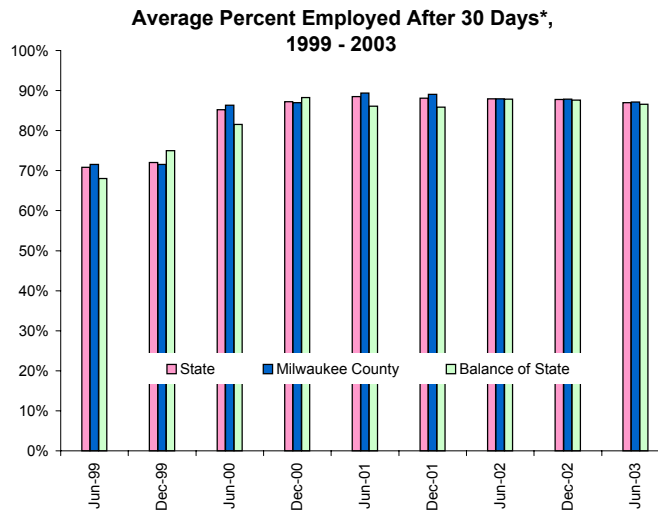


	May-03	Jun-03	Jul-03	Aug-03	Sep-03	Oct-03
Milwaukee County	29%	29%	29%	24%	23%	23%
Bal. of State	24	23	23	25	23	23
Statewide	28%	28%	28%	25%	23%	23%

Source: CARES, Bureau of Workforce Information, Division of Workforce Solutions, Department of Workforce Development.

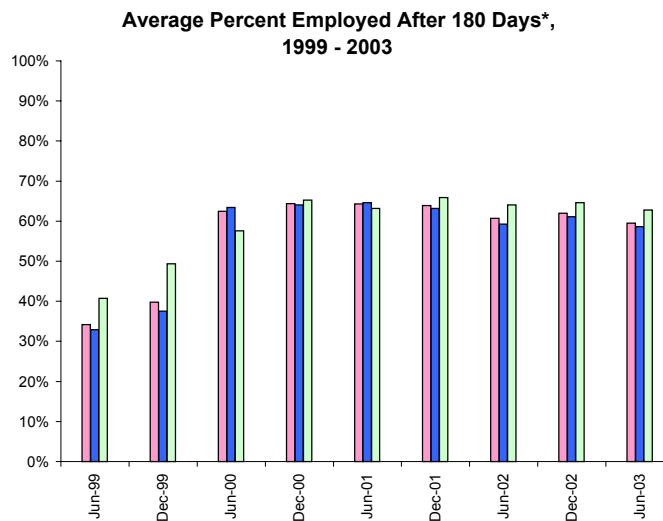
* Note: Because sanction counts prior to September 1999 were counted differently they are not included in these graphs. The graphs on this page report information on the sanctionable population (W-2T and CSJ placements only). The data represented here are point in time during a month.

W-2 Participants Employed After 30 and 180 Days



Number Employed After 30 Days - Most Recent Six Months

	May-03	Jun-03	Jul-03	Aug-03	Sep-03	Oct-03
Milwaukee County	334	269	334	245	322	399
Bal. of State	118	71	91	64	79	93
Statewide	452	340	425	309	401	492



Number Employed After 180 Days - Most Recent Six Months

	May-03	Jun-03	Jul-03	Aug-03	Sep-03	Oct-03
Milwaukee County	275	196	232	180	217	211
Bal. of State	100	32	59	51	54	62
Statewide	375	228	291	231	271	273

Source: CARES, Bureau of Workforce Information, Division of Workforce Solutions, Department of Workforce Development.

*Note: The percent employed is a six month average of the months prior to the date in the graph. Entered employments are unsubsidized employments that began during the W-2 episode. Follow-throughs that meet the criteria are recorded for entered employments as of the 30th or 180th day after the start of an entered employment. The recorded results of the follow-through can be no contact, employed, or not employed.