

Wisconsin
Child Abuse and Neglect
Report

Appendices

2009 Data

Bureau of Program Integrity
Division of Safety and Permanence
Wisconsin Department of Children and Families

APPENDIX A

Child Maltreatment Related Statutes

Following are excerpts from the Wisconsin statutes that create the basis for persons to report suspected child maltreatment and for child protective services agencies to respond. The excerpts are from the updated 2007-2008 Wisconsin statutes, current as of March 31, 2010. (**Note:** The excerpts appear exactly as they would appear in the published statutes. Therefore, other portions of the statutes not relevant to child maltreatment are included.)

Included in the excerpts are sections from chapter 48, known as the Children's Code, and sections from criminal statutes that are cross-referenced in the Children's Code in order to define child.

- **s. 48.01, Stats., Title and legislative purpose.**
- **s. 48.02, Stats., Definitions.** This includes definitions of child maltreatment.
- **s. 48.13, Stats., Jurisdiction over children alleged to be in need of protection or services.** This describes the basis on which the local child protective services agencies (county social/human services departments and the Bureau of Milwaukee Child Welfare) may petition the court to intervene with a family.
- **s. 48.981, Stats., Abused or neglected children and abused unborn children.** This section defines child neglect, describes the reporting requirements of alleged child maltreatment and describes the child protective services agencies' duties and responsibilities.
- **s. 939.22, Stats., Words and phrases defined.** This section defines terms that are used in describing certain crimes, some of which are cross-referenced in s. 48.02, Stats., in order to define child maltreatment.
- **s. 940.225, Stats., Sexual assault.** This defines the crime of sexual assault and is cross-referenced under s. 48.02(1)(b), Stats.
- **s. 944.30, Stats., Prostitution.** This defines the crime of prostitution and is cross-referenced under s. 48.02(1)(d), Stats.
- **s. 948.02, Stats., Sexual assault of a child.** This is the first in a series of crimes from chapter 948, known as Crimes Against Children that are cross-referenced under s. 48.02(1)(b), Stats., in order to define child sexual abuse. The following sections are also cross-referenced under s. 48.02(1), Stats.:
- **s. 948.025, Stats., Engaging in repeated acts of sexual assault of the same child.**
- **s. 948.05, Stats., Sexual exploitation of a child.**
- **s. 948.055, Stats., Causing a child to view or listen to sexual activity.**
- **s. 948.085, Stats., Sexual assault of a child placed in substitute care.**
- **s. 948.10, Stats., Exposing genitals or pubic area.**

The complete Wisconsin statutes can be viewed at the Wisconsin State Legislature website: <http://www.legis.state.wi.us/rsb/stats.html>.

APPENDIX B

Unborn Child Abuse

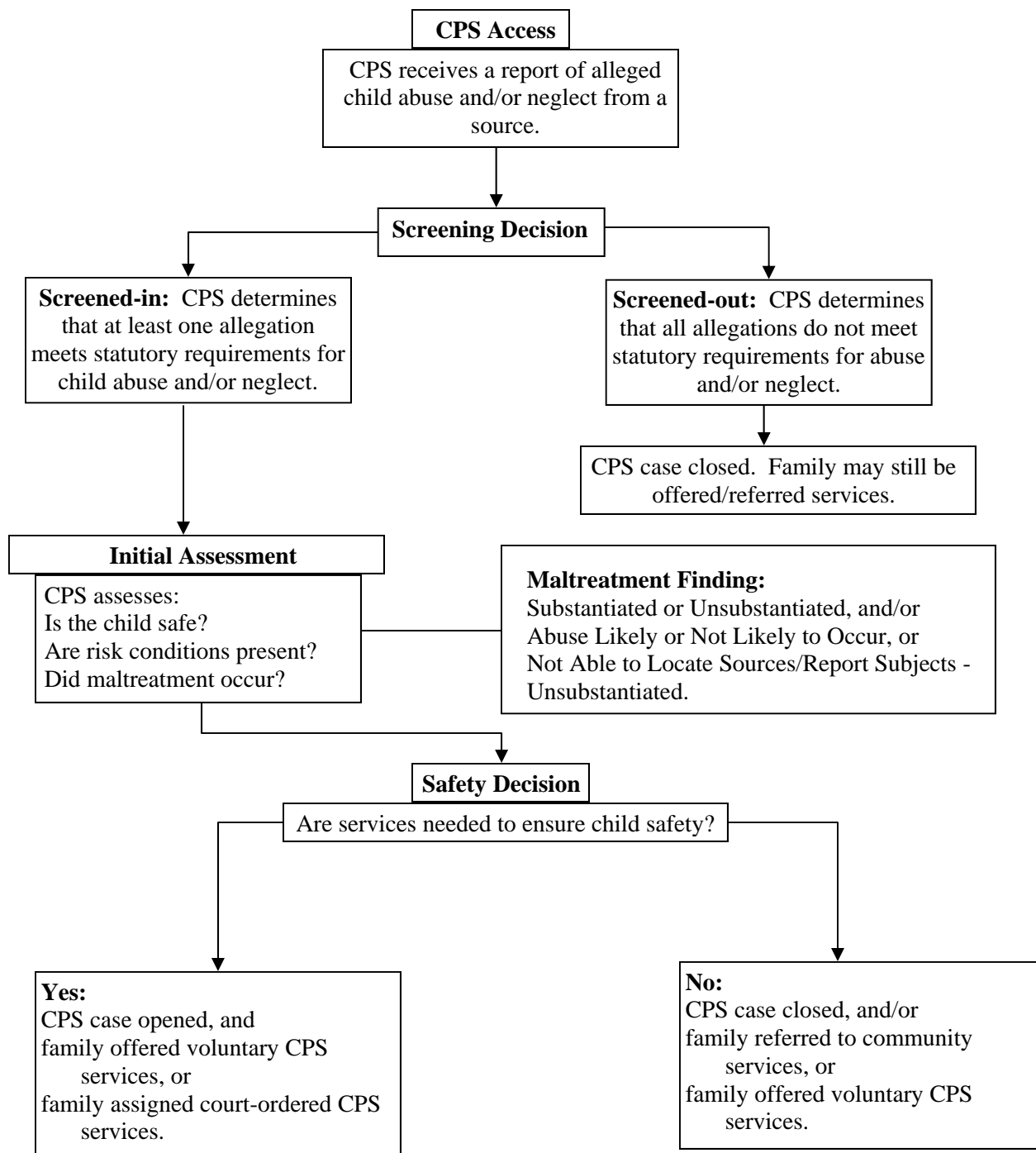
Unborn child abuse is defined as “serious physical harm inflicted on the unborn child, and the risk of serious physical harm to the child when born, caused by the habitual lack of self-control of the expectant mother of the unborn child in the use of alcohol beverages, controlled substances or controlled substance analogs, exhibited to a severe degree.” [Ref. s. 48.02(1)(am), Stats.]

The maltreatment allegation of unborn child abuse is excluded from maltreatment allegation counts in the body of this report and presented here separately.

- In calendar year 2009, CPS agencies screened-in 314 allegations of unborn child abuse for further assessment.
- The most common reporters of screened-in unborn child abuse allegations were social service workers (21%), legal/law enforcement (12%), and medical professionals (13%).
- Forty-eight of the 314 screened-in allegations (15%) of unborn child abuse were substantiated after the CPS initial assessment.
- Of the CPS initial assessments which had a substantiated unborn child abuse allegation, 92% were opened or already opened for CPS services.
- Ten children were placed in out-of-home care after the child’s birth as a part of the CPS initial assessment of unborn child abuse.

APPENDIX C

An Overview of the CPS Process



APPENDIX D

Data Collection and Interpretation**Data Collection Process**

The child maltreatment data collected for calendar year 2009 is from the electronic Wisconsin Statewide Automated Child Welfare Information System (eWiSACWIS). eWiSACWIS allows case workers, supervisors and administrators to manage child welfare services and supports practice responsibilities related to CPS Access, initial assessment, case management, court process, out-of-home placements, and more. Compared with the previous child maltreatment data source, the CFS-40 form, use of the eWiSACWIS system greatly expands the type of data collected and also improves the timeliness and accuracy of child welfare data. The quality of the data in this report is dependent upon the accuracy and timeliness of data recorded by the local agencies.

The historical data in this report (prior to 2005) includes data from both eWiSACWIS and the CFS-40 forms. Previously, counties completed CFS-40 forms at the conclusion of CPS initial assessments and data from this form was manually entered into a child maltreatment database. CPS agencies began using eWiSACWIS in 2001 and statewide rollout of the system was completed in 2004. The implications of using the more robust eWiSACWIS data and the transition from CFS-40 data to eWiSACWIS data are discussed in the next section.

Data Interpretation

As with previous publications, data for the 2009 edition of the Wisconsin Child Abuse and Neglect Report includes some cases in which the alleged maltreatment occurred in a previous year but was reported and assessed in 2009.

The 2009 Wisconsin Child Abuse and Neglect Report is the fourth year in which data was taken entirely from the eWiSACWIS system. As counties have increased experience using the eWiSACWIS system, the 2009 data has become more stable and reliable. In graphs which depict historical trends, differences in counts between calendar years 2004 and 2005 can be seen. These differences coincide with the transition from the legacy CFS-40 data system to eWiSACWIS and may be attributable to varied data entry practices between and functions of the two systems. In 2005 and 2006, the eWiSACWIS system required entry of a new allegation for every maltreater alleged for each child. Therefore, if neglect was alleged for one child by both parents it counted as 2 neglect allegations. The legacy CFS-40 data system counted allegations once per maltreatment type per child (regardless of the number of maltreaters).

In September 2007, the eWiSACWIS system was modified to allow allegations to be counted once per maltreatment type per child while also separately maintaining data on maltreaters. The impact of these data entry practices are most readily seen in the neglect maltreatment type as these situations more often involve maltreatment by multiple individuals.

Changes in child welfare policy and practice have also impacted the use of the abuse likely to occur finding in calendar year 2007. At the beginning of calendar year 2007, the BMCW discontinued use of abuse likely to occur allegation type. Then, with the release of the new statewide Access and Initial Assessment Standards in September 2007, the abuse likely to occur allegation was removed as a maltreatment type for the entire state. The abuse likely to occur allegation type was discontinued because it lacked a definition that would allow consistent usage and make it clearly distinguishable from the other maltreatment types. It was found that the abuse likely to occur allegation could be more appropriately categorized under one of the other maltreatment types to represent the risk of maltreatment, in most cases neglect. The 2008 data is the first calendar year with no abuse likely to occur data.

Mutual Sexual Activity

Mutual sexual activity by minors is excluded from all data tables and figures which depict calendar year 2005 - 2009 data. Mutual sexual activity by minors appears in counts in graphs which depict data prior to 2005. In 2009, there were 254 screened-in allegations of mutual sexual activity by minors.

APPENDIX E

Total Referrals and Screening Decisions by County, 2009

County	Total CPS Referrals	Screen-out CPS Referrals	Percent Screen-out	Screen-in CPS Referrals	Percent Screen-in	Screen-in Service Referrals*	Screen-out Service Referrals*
Adams	179	104	58%	75	42%	163	119
Ashland	198	156	79%	42	21%	201	82
Barron	708	492	69%	216	31%	184	272
Bayfield	98	40	41%	58	59%	127	53
Brown	2,896	2,048	71%	848	29%	160	70
Buffalo	103	65	63%	38	37%	81	35
Burnett	123	67	54%	56	46%	166	68
Calumet	428	283	66%	145	34%	19	7
Chippewa	494	328	66%	166	34%	122	26
Clark	396	254	64%	142	36%	165	66
Columbia	308	114	37%	194	63%	529	362
Crawford	104	41	39%	63	61%	136	78
Dane	3,628	2,435	67%	1,193	33%	1,378	984
Dodge	645	349	54%	296	46%	319	37
Door	158	59	37%	99	63%	134	28
Douglas	752	463	62%	289	38%	431	71
Dunn	304	225	74%	79	26%	232	25
Eau Claire	1,410	1,067	76%	343	24%	160	112
Florence	41	15	37%	26	63%	25	-
Fond du Lac	615	100	16%	515	84%	651	601
Forest	84	69	82%	15	18%	106	90
Grant	306	178	58%	128	42%	422	58
Green	412	218	53%	194	47%	216	113
Green Lake	139	60	43%	79	57%	99	39
Iowa	249	146	59%	103	41%	98	11
Iron	31	13	42%	18	58%	20	8
Jackson	390	276	71%	114	29%	173	139
Jefferson	472	257	54%	215	46%	447	51
Juneau	101	37	37%	64	63%	187	78
Kenosha	1,091	392	36%	699	64%	722	604
Kewaunee	60	47	78%	13	22%	38	29
La Crosse	1,344	895	67%	449	33%	69	139
Lafayette	184	91	49%	93	51%	49	12
Langlade	315	140	44%	175	56%	235	141
Lincoln	271	154	57%	117	43%	300	51
Manitowoc	921	481	52%	440	48%	292	120
Marathon	1,053	642	61%	411	39%	784	42

County	Total CPS Referrals	Screen-out CPS Referrals	Percent Screen-out	Screen-in CPS Referrals	Percent Screen-in	Screen-in Service Referrals*	Screen-out Service Referrals*
Marinette	333	309	93%	24	7%	116	225
Marquette	129	54	42%	75	58%	132	73
Menominee	139	69	50%	70	50%	177	47
Milwaukee	14,100	6,306	45%	7,794	55%	2,609	714
Monroe	475	248	52%	227	48%	332	17
Oconto	199	121	61%	78	39%	228	262
Oneida	256	23	9%	233	91%	364	52
Outagamie	2,592	1,358	52%	1,234	48%	108	283
Ozaukee	307	125	41%	182	59%	36	73
Pepin	25	7	28%	18	72%	47	23
Pierce	481	335	70%	146	30%	236	65
Polk	792	516	65%	276	35%	261	30
Portage	186	158	85%	28	15%	195	5
Price	110	76	69%	34	31%	199	-
Racine	2,301	1,333	58%	968	42%	1,463	146
Richland	112	67	60%	45	40%	99	155
Rock	2,436	909	37%	1,527	63%	1,757	676
Rusk	255	172	67%	83	33%	89	89
Saint Croix	585	361	62%	224	38%	476	130
Sauk	343	180	52%	163	48%	369	459
Sawyer	120	64	53%	56	47%	202	172
Shawano	220	63	29%	157	71%	425	258
Sheboygan	909	468	51%	441	49%	880	22
Taylor	185	117	63%	68	37%	59	7
Trempealeau	276	172	62%	104	38%	72	51
Vernon	174	72	41%	102	59%	158	9
Vilas	159	25	16%	134	84%	102	113
Walworth	822	586	71%	236	29%	535	62
Washburn	93	42	45%	51	55%	162	48
Washington	427	251	59%	176	41%	407	323
Waukesha	1,705	1,130	66%	575	34%	89	7
Waupaca	603	360	60%	243	40%	290	25
Waushara	318	183	58%	135	42%	106	7
Winnebago	2,193	1,240	57%	953	43%	1,378	58
Wood	1,248	810	65%	438	35%	161	39
STATE TOTAL	56,619	31,111	55%	25,508	45%	23,959	9,546

*Source: Data about service referrals was compiled using the WISACWIS sm0201 Access Report. Service referrals represent contacts and decision made where CPS issues were not identified as part of the report. Decisions about documentation of service referrals are not governed by statute and are determined by local agency practice.

APPENDIX F

CPS Reports Per 1,000 Children by County, 2009

County	Child Population (Ages 0-17)*	Number of CPS Reports	CPS Reports per 1,000 Population
Adams	3,494	102	29.2
Ashland	3,714	48	12.9
Barron	9,780	369	37.7
Bayfield	2,932	78	26.6
Brown	60,251	1,279	21.2
Buffalo	2,943	49	16.6
Burnett	3,128	77	24.6
Calumet	11,654	195	16.7
Chippewa	13,671	239	17.5
Clark	9,254	211	22.8
Columbia	12,413	230	18.5
Crawford	3,782	99	26.2
Dane	105,929	1,710	16.1
Dodge	18,517	400	21.6
Door	5,083	130	25.6
Douglas	9,478	437	46.1
Dunn	8,794	114	13.0
Eau Claire	21,161	507	24.0
Florence	831	34	40.9
Fond du Lac	22,268	818	36.7
Forest	2,132	21	9.8
Grant	10,025	170	17.0
Green	8,396	290	34.5
Green Lake	3,986	96	24.1
Iowa	5,659	148	26.2
Iron	973	26	26.7
Jackson	4,298	150	34.9
Jefferson	18,268	334	18.3
Juneau	5,657	89	15.7
Kenosha	42,297	971	23.0
Kewaunee	4,420	22	5.0
La Crosse	24,261	699	28.8
Lafayette	3,680	151	41.0
Langlade	4,175	279	66.8
Lincoln	6,460	172	26.6
Manitowoc	17,434	672	38.5
Marathon	30,976	611	19.7
Marinette	8,442	33	3.9
Marquette	3,022	104	34.4
Menominee	1,580	92	58.2
Milwaukee	250,167	11,992	47.9

APPENDIX F (Continued)

County	Child Population (Ages 0-17)*	Number of CPS Reports	CPS Reports per 1,000 Population
Monroe	11,108	313	28.2
Oconto	7,999	92	11.5
Oneida	6,693	274	40.9
Outagamie	43,282	1,883	43.5
Ozaukee	19,105	274	14.3
Pepin	1,657	25	15.1
Pierce	8,635	188	21.8
Polk	10,004	424	42.4
Portage	14,361	44	3.1
Price	2,721	46	16.9
Racine	49,537	1,374	27.7
Richland	3,908	52	13.3
Rock	39,328	2,491	63.3
Rusk	3,135	120	38.3
Saint Croix	21,234	320	15.1
Sauk	13,838	235	17.0
Sawyer	3,679	78	21.2
Shawano	9,296	231	24.8
Sheboygan	26,479	645	24.4
Taylor	4,338	96	22.1
Trempealeau	6,437	158	24.5
Vernon	7,286	154	21.1
Vilas	3,848	192	49.9
Walworth	22,667	326	14.4
Washburn	3,383	78	23.1
Washington	30,360	240	7.9
Waukesha	86,910	795	9.1
Waupaca	11,483	332	28.9
Waushara	4,937	186	37.7
Winnebago	35,166	1,545	43.9
Wood	16,213	638	39.4
STATE TOTAL	1,314,412	38,097	29.0

*Source: Easy Access to Juvenile Populations, <http://ojjdp.ncjrs.gov/ojstatbb/ezapop/>

NOTE: This report only includes screened-in CPS reports which had a supervisor approved CPS initial assessment as of July 16, 2010. Screened-in CPS reports are not included in this report if they did not have an approved initial assessment by that date.

APPENDIX G

County Substantiation Rates, 2009

County	Number of Initial Assessments	Number of CPS Reports	Maltreatment Substantiation Count	Maltreatment Substantiation Rate
Adams	74	102	29	28%
Ashland	40	48	9	19%
Barron	211	369	73	20%
Bayfield	58	78	14	18%
Brown	839	1,279	185	14%
Buffalo	36	49	4	8%
Burnett	54	77	13	17%
Calumet	137	195	37	19%
Chippewa	157	239	83	35%
Clark	135	211	50	24%
Columbia	179	230	46	20%
Crawford	63	99	11	11%
Dane	1,116	1,710	290	17%
Dodge	296	400	91	23%
Door	99	130	22	17%
Douglas	288	437	36	8%
Dunn	79	114	27	24%
Eau Claire	343	507	47	9%
Florence	26	34	21	62%
Fond du Lac	497	818	111	14%
Forest	15	21	3	14%
Grant	123	170	19	11%
Green	184	290	45	16%
Green Lake	76	96	23	24%
Iowa	97	148	14	9%
Iron	18	26	12	46%
Jackson	104	150	40	27%
Jefferson	208	334	114	34%
Juneau	64	89	3	3%
Kenosha	698	971	153	16%
Kewaunee	13	22	11	50%
La Crosse	394	699	87	12%
Lafayette	91	151	34	23%
Langlade	165	279	67	24%
Lincoln	117	172	24	14%
Manitowoc	427	672	105	16%
Marathon	405	611	175	29%
Marinette	24	33	12	36%

County	Number of Initial Assessments	Number of CPS Reports	Maltreatment Substantiation Count	Maltreatment Substantiation Rate
Marquette	74	104	23	22%
Menominee	66	92	20	22%
Milwaukee	6,904	11,992	1,107	9%
Monroe	225	313	37	12%
Oconto	75	92	25	27%
Oneida	229	274	49	18%
Outagamie	1,121	1,883	164	9%
Ozaukee	179	274	16	6%
Pepin	17	25	5	20%
Pierce	142	188	22	12%
Polk	256	424	44	10%
Portage	28	44	11	25%
Price	34	46	10	22%
Racine	886	1,374	194	14%
Richland	42	52	5	10%
Rock	1,424	2,491	278	11%
Rusk	83	120	7	6%
Saint Croix	207	320	34	11%
Sauk	149	235	51	22%
Sawyer	54	78	19	24%
Shawano	149	231	39	17%
Sheboygan	422	645	96	15%
Taylor	68	96	19	20%
Trempealeau	94	158	10	6%
Vernon	99	154	20	13%
Vilas	127	192	44	23%
Walworth	219	326	104	32%
Washburn	49	78	35	45%
Washington	175	240	45	19%
Waukesha	562	795	225	28%
Waupaca	230	332	64	19%
Waushara	131	186	23	12%
Winnebago	858	1,545	147	10%
Wood	423	638	75	12%
STATE TOTAL	23,751	38,097	5,207	14%

APPENDIX H

Child Victimization Rate by County, 2009

County	Child Population (Ages 0-17)*	Number of Child Victims	Child Victims per 1,000 Population
Adams	3,494	24	6.9
Ashland	3,714	7	1.9
Barron	9,780	68	7.0
Bayfield	2,932	10	3.4
Brown	60,251	159	2.6
Buffalo	2,943	3	1.0
Burnett	3,128	10	3.2
Calumet	11,654	31	2.7
Chippewa	13,671	59	4.3
Clark	9,254	39	4.2
Columbia	12,413	41	3.3
Crawford	3,782	9	2.4
Dane	105,929	231	2.2
Dodge	18,517	83	4.5
Door	5,083	18	3.5
Douglas	9,478	33	3.5
Dunn	8,794	27	3.1
Eau Claire	21,161	44	2.1
Florence	831	15	18.1
Fond du Lac	22,268	88	4.0
Forest	2,132	3	1.4
Grant	10,025	18	1.8
Green	8,396	39	4.6
Green Lake	3,986	20	5.0
Iowa	5,659	12	2.1
Iron	973	10	10.3
Jackson	4,298	30	7.0
Jefferson	18,268	95	5.2
Juneau	5,657	2	0.4
Kenosha	42,297	133	3.1
Kewaunee	4,420	11	2.5
La Crosse	24,261	75	3.1
Lafayette	3,680	27	7.3
Langlade	4,175	51	12.2
Lincoln	6,460	24	3.7
Manitowoc	17,434	80	4.6
Marathon	30,976	157	5.1
Marinette	8,442	9	1.1
Marquette	3,022	18	6.0
Menominee	1,580	17	10.8
Milwaukee	250,167	876	3.5

APPENDIX H (Continued)

County	Child Population (Ages 0-17)*	Number of Child Victims	Child Victims per 1,000 Population
Monroe	11,108	32	2.9
Oconto	7,999	21	2.6
Oneida	6,693	45	6.7
Outagamie	43,282	132	3.0
Ozaukee	19,105	14	0.7
Pepin	1,657	5	3.0
Pierce	8,635	21	2.4
Polk	10,004	33	3.3
Portage	14,361	10	0.7
Price	2,721	8	2.9
Racine	49,537	166	3.4
Richland	3,908	5	1.3
Rock	39,328	211	5.4
Rusk	3,135	7	2.2
Saint Croix	21,234	29	1.4
Sauk	13,838	39	2.8
Sawyer	3,679	16	4.3
Shawano	9,296	35	3.8
Sheboygan	26,479	73	2.8
Taylor	4,338	16	3.7
Trempealeau	6,437	9	1.4
Vernon	7,286	11	1.5
Vilas	3,848	35	9.1
Walworth	22,667	94	4.1
Washburn	3,383	31	9.2
Washington	30,360	40	1.3
Waukesha	86,910	201	2.3
Waupaca	11,483	46	4.0
Waushara	4,937	15	3.0
Winnebago	35,166	119	3.4
Wood	16,213	64	3.9
STATE TOTAL	1,314,412	4,289	3.3

*Source: Easy Access to Juvenile Populations, <http://ojjdp.ncjrs.gov/ojstatbb/ezapop/>

APPENDIX I

**Total Maltreatment Allegations by Maltreatment Type and
Maltreatment Finding by County, 2009**

County	Total Reports	Allegations By Type															
		Neglect				Emotional Damage				Physical Abuse				Sexual Abuse			
		S	U	N	Total	S	U	N	Total	S	U	N	Total	S	U	N	Total
Adams	115	21	22	2	45		3		3	2	33	1	36	6	25		31
Ashland	55	2	12		14					2	17	4	23	5	12	1	18
Barron	408	58	228	2	288		7		7	4	51		55	11	45	2	58
Bayfield	84	6	31	1	38		2		2	5	22	1	28	3	13		16
Brown	1,450	98	629	49	776		28	1	29	35	386	32	453	52	134	6	192
Buffalo	58		25		25		2		2	2	16		18	2	10	1	13
Burnett	87	7	32	1	40						22		22	6	18	1	25
Calumet	242	18	95	1	114		13		13	13	61		74	6	35		41
Chippewa	282	39	99	1	139	13	1		14	10	51		61	21	47		68
Clark	261	24	98	4	126		15		15	6	59		65	20	32	3	55
Columbia	286	16	70		86	2	15		17	13	79		92	15	76		91
Crawford	116	6	58		64		5		5	2	29		31	3	12	1	16
Dane	1,947	154	852	9	1,015		28		28	74	559	6	639	62	198	5	265
Dodge	439	35	155	1	191	7	6		13	25	114	1	140	24	71		95
Door	149	13	58	1	72		2		2	3	36	1	40	6	28	1	35
Douglas	507	24	294	17	335		12		12	2	92	1	95	10	55		65
Dunn	118	9	42	2	53		2		2	8	21		29	10	24		34
Eau Claire	573	28	289	5	322		11		11	6	132	2	140	13	84	3	100
Florence	40	11	11	1	23	1			1	4	4		8	5	3		8
Fond Du Lac	932	77	500	13	590	1	10		11	10	230	1	241	23	64	3	90
Forest	21	2			2					1	16		17		2		2
Grant	203	9	79	5	93		3	1	4	7	68	1	76	3	26	1	30
Green	321	27	146	1	174	3	4		7	6	87		93	9	38		47
Green Lake	107	7	23		30		2		2	5	35	3	43	11	21		32
Iowa	165	7	69	1	77		6		6	5	58	2	65	2	12	3	17
Iron	29	9	10		19		2		2	1	4		5	2	1		3
Jackson	176	25	53	1	79	6	3		9	7	62	1	70	2	16		18
Jefferson	383	71	146	3	220					21	62	2	85	22	54	2	78
Juneau	95	3	36	2	41						35	3	38		16		16
Kenosha	1,067	56	353	8	417		1		1	57	431	4	492	40	108	9	157
Kewaunee	22	9	8		17					1			1	1	3		4
La Crosse	771	40	347	28	415		26		26	16	184	10	210	31	83	6	120
Lafayette	176	28	91	2	121		2		2	1	36		37	5	11		16
Langlade	316	50	157	7	214		6		6	6	53		59	11	26		37
Lincoln	175	13	89	6	108					5	44		49	6	12		18
Manitowoc	782	67	435	6	508	1	21		22	5	166		171	32	48	1	81
Marathon	663	115	294	2	411	3	6		9	11	138		149	46	48		94
Marinette	41	5	4	4	13		3		3	3	11	4	18	4	2	1	7
Marquette	121	9	43		52		4		4	12	29		41	2	21	1	24
Menominee	109	15	45	3	63					1	30	4	35	4	4	3	11
Milwaukee	13,601	559	6,911	398	7,868	2	201	4	207	242	3,821	93	4,156	304	1,019	47	1,370

APPENDIX I (Continued)

County	Total Reports	Allegations By Type															
		Neglect				Emotional Damage				Physical Abuse				Sexual Abuse			
		S	U	N	Total	S	U	N	Total	S	U	N	Total	S	U	N	Total
Monroe	355	18	189		207		1		1	7	90	2	99	12	32	4	48
Oconto	98	9	12	2	23		1		1	6	43		49	10	14	1	25
Oneida	290	31	96	1	128	1	2		3	6	63	1	70	11	70	8	89
Outagamie	2,030	90	1,068	11	1,169		59		59	13	554	1	568	61	171	2	234
Ozaukee	322	7	174	1	182		30		30	4	74		78	5	27		32
Pepin	27	3	8		11		1		1	1	9		10	1	4		5
Pierce	214	7	82		89		8		8	8	62	2	72	7	38		45
Polk	485	25	236	9	270	5	37	5	47	2	71	5	78	12	71	7	90
Portage	51	6	23	4	33	1	4		5	2	1		3	2	8		10
Price	58	2	16		18	1	6		7	2	11		13	5	15		20
Racine	1,448	97	519	78	694		8	1	9	35	382	44	461	62	196	26	284
Richland	55	1	14	2	17					2	27		29	2	7		9
Rock	2,954	188	1,363	17	1,568		35		35	36	848	11	895	54	391	11	456
Rusk	132		66		66		6		6		31		31	7	22		29
Saint Croix	345	12	154	5	171		4		4	8	103	2	113	14	43		57
Sauk	284	27	90	3	120		1		1	11	64		75	13	68	7	88
Sawyer	98	7	37	2	46	1	1		2	3	20		23	8	19		27
Shawano	250	24	94		118		2		2	5	65		70	10	50		60
Sheboygan	730	51	335	4	390	5	67		72	17	167	9	193	23	51	1	75
Taylor	110	6	46	1	53	3	3		6	4	28	2	34	6	11		17
Trempealeau	178	2	96		98		4	1	5	1	40	2	43	7	25		32
Vernon	204	9	114		123		8		8	5	45		50	6	17		23
Vilas	224	20	94		114		2	1	3	4	42	1	47	20	39	1	60
Walworth	358	48	111	2	161		6		6	15	78		93	41	55	2	98
Washburn	83	28	24		52		2		2	2	9		11	5	13		18
Washington	269	28	66		94		11		11	8	97		105	9	49	1	59
Waukesha	869	104	328	4	436	6	6		12	28	202	3	233	87	101		188
Waupaca	399	34	142	1	177		31		31	17	100		117	13	61		74
Waushara	292	14	155	1	170		13		13		75	2	77	9	22	1	32
Winnebago	1,697	91	963	25	1,079		3		3	25	380	2	407	31	175	2	208
Wood	700	48	321	11	380		1		1	14	213	1	228	13	77	1	91
Grand Total	43,102	2,809	19,975	771	23,555	62	815	14	891	930	11,378	267	12,575	1,406	4,499	176	6,081

* The sum of the totals of each type of allegation may exceed the total number of reports because there may be more than one allegation per report. The totals for sexual abuse exclude cases of mutual sexual activity.

APPENDIX J

**County Maltreatment Allegation Substantiation Rate By
Maltreatment Type, 2009**

County	Neglect Substantiation Percent	Physical Abuse Substantiation Percent	Sexual Abuse Substantiation Percent	Emotional Abuse Substantiation Percent
Adams	47%	6%	19%	0%
Ashland	14%	9%	28%	N/A
Barron	20%	7%	19%	0%
Bayfield	16%	18%	19%	0%
Brown	13%	8%	27%	0%
Buffalo	0%	11%	15%	0%
Burnett	18%	0%	24%	N/A
Calumet	16%	18%	15%	0%
Chippewa	28%	16%	31%	93%
Clark	19%	9%	36%	0%
Columbia	19%	14%	16%	12%
Crawford	9%	6%	19%	0%
Dane	15%	12%	23%	0%
Dodge	18%	18%	25%	54%
Door	18%	8%	17%	0%
Douglas	7%	2%	15%	0%
Dunn	17%	28%	29%	0%
Eau Claire	9%	4%	13%	0%
Florence	48%	50%	63%	100%
Fond du Lac	13%	4%	26%	9%
Forest	100%	6%	0%	N/A
Grant	10%	9%	10%	0%
Green	16%	6%	19%	43%
Green Lake	23%	12%	34%	0%
Iowa	9%	8%	12%	0%
Iron	47%	20%	67%	0%
Jackson	32%	10%	11%	67%
Jefferson	32%	25%	28%	N/A
Juneau	7%	0%	0%	N/A
Kenosha	13%	12%	25%	0%
Kewaunee	53%	100%	25%	N/A
La Crosse	10%	8%	26%	0%
Lafayette	23%	3%	31%	0%
Langlade	23%	10%	30%	0%
Lincoln	12%	10%	33%	N/A
Manitowoc	13%	3%	40%	5%
Marathon	28%	7%	49%	33%
Marinette	38%	17%	57%	0%
Marquette	17%	29%	8%	0%
Menominee	24%	3%	36%	N/A
Milwaukee	7%	6%	22%	1%

APPENDIX J (Continued)

County	Neglect Substantiation Rate	Physical Abuse Substantiation Rate	Sexual Abuse Substantiation Rate	Emotional Abuse Substantiation Rate
Monroe	9%	7%	25%	0%
Oconto	39%	12%	40%	0%
Oneida	24%	9%	12%	33%
Outagamie	8%	2%	26%	0%
Ozaukee	4%	5%	16%	0%
Pepin	27%	10%	20%	0%
Pierce	8%	11%	16%	0%
Polk	9%	3%	13%	11%
Portage	18%	67%	20%	20%
Price	11%	15%	25%	14%
Racine	14%	8%	22%	0%
Richland	6%	7%	22%	N/A
Rock	12%	4%	12%	0%
Rusk	0%	0%	24%	0%
Saint Croix	7%	7%	25%	0%
Sauk	23%	15%	15%	0%
Sawyer	15%	13%	30%	50%
Shawano	20%	7%	17%	0%
Sheboygan	13%	9%	31%	7%
Taylor	11%	12%	35%	50%
Trempealeau	2%	2%	22%	0%
Vernon	7%	10%	26%	0%
Vilas	18%	9%	33%	0%
Walworth	30%	16%	42%	0%
Washburn	54%	18%	28%	0%
Washington	30%	8%	15%	0%
Waukesha	24%	12%	46%	50%
Waupaca	19%	15%	18%	0%
Waushara	8%	0%	28%	0%
Winnebago	8%	6%	15%	0%
Wood	13%	6%	14%	0%
STATE TOTAL	12%	7%	23%	7%

NOTE: Refer to Appendix I for counts of maltreatment allegations.

APPENDIX K

Percentage of CPS Initial Assessments by Type by County, 2009

County	Total CPS Initial Assessments	Primary Caregiver CPS Initial Assessments	Percent Primary	Secondary CPS Initial Assessments/ Non-Caregiver Investigations	Percent Secondary/ Non-Caregiver
Adams	61	50	82%	11	18%
Ashland	46	27	59%	19	41%
Barron	208	189	91%	19	9%
Bayfield	67	57	85%	10	15%
Brown	786	733	93%	53	7%
Buffalo	39	34	87%	5	13%
Burnett	41	38	93%	3	7%
Calumet	146	146	100%	-	0%
Chippewa	137	120	88%	17	12%
Clark	117	108	92%	9	8%
Columbia	152	124	82%	28	18%
Crawford	47	40	85%	7	15%
Dane	1,146	1,085	95%	61	5%
Dodge	263	246	94%	17	6%
Door	89	63	71%	26	29%
Douglas	197	182	92%	15	8%
Dunn	97	93	96%	4	4%
Eau Claire	308	282	92%	26	8%
Florence	19	14	74%	5	26%
Fond du Lac	457	457	100%	-	0%
Forest	33	23	70%	10	30%
Grant	177	162	92%	15	8%
Green	229	208	91%	21	9%
Green Lake	53	31	58%	22	42%
Iowa	101	82	81%	19	19%
Iron	22	18	82%	4	18%
Jackson	112	105	94%	7	6%
Jefferson	176	154	88%	22	13%
Juneau	98	93	95%	5	5%
Kenosha	793	791	100%	2	0%
Kewaunee	11	7	64%	4	36%
La Crosse	386	330	85%	56	15%
Lafayette	75	68	91%	7	9%
Langlade	251	202	80%	49	20%
Lincoln	129	116	90%	13	10%
Manitowoc	479	433	90%	46	10%
Marathon	478	430	90%	48	10%
Marinette	15	13	87%	2	13%
Marquette	59	52	88%	7	12%
Menominee	62	54	87%	8	13%
Milwaukee	7,602	6,956	92%	646	8%

APPENDIX K (Continued)

County	Total CPS Initial Assessments	Primary Caregiver CPS Initial Assessments	Percent Primary	Secondary CPS Initial Assessments/ Non-Caregiver Investigations	Percent Secondary/ Non-Caregiver
Monroe	262	243	93%	19	7%
Oconto	74	65	88%	9	12%
Oneida	224	145	65%	79	35%
Outagamie	974	842	86%	132	14%
Ozaukee	204	197	97%	7	3%
Pepin	8	4	50%	4	50%
Pierce	131	116	89%	15	11%
Polk	215	202	94%	13	6%
Portage	143	121	85%	22	15%
Price	36	25	69%	11	31%
Racine	1,009	1,005	100%	4	0%
Richland	76	64	84%	12	16%
Rock	1,430	1,313	92%	117	8%
Rusk	82	72	88%	10	12%
Saint Croix	209	197	94%	12	6%
Sauk	127	122	96%	5	4%
Sawyer	56	47	84%	9	16%
Shawano	171	139	81%	32	19%
Sheboygan	498	468	94%	30	6%
Taylor	72	70	97%	2	3%
Trempealeau	129	126	98%	3	2%
Vernon	91	87	96%	4	4%
Vilas	116	79	68%	37	32%
Walworth	294	181	62%	113	38%
Washburn	31	29	94%	2	6%
Washington	170	143	84%	27	16%
Waukesha	596	596	100%	-	0%
Waupaca	226	199	88%	27	12%
Waushara	127	119	94%	8	6%
Winnebago	875	811	93%	64	7%
Wood	481	448	93%	33	7%
STATE TOTAL	24,901	22,691	91%	2,210	9%

APPENDIX L

**Safety Assessment Results in Primary Caregiver
CPS Initial Assessments by County, 2009**

County	Total Primary Caregiver CPS Initial Assessments	Number with a Safe Safety Decision	Number with an Unsafe Safety Decision	Percent Unsafe	Number with No Safety Decision Finding
Adams	66	46	20	30%	0
Ashland	26	25	1	4%	0
Barron	199	170	29	15%	0
Bayfield	50	47	3	6%	0
Brown	777	714	63	8%	0
Buffalo	34	32	2	6%	0
Burnett	50	49	1	2%	0
Calumet	137	124	13	9%	0
Chippewa	139	107	32	23%	0
Clark	122	112	10	8%	0
Columbia	142	125	17	12%	0
Crawford	51	50	1	2%	0
Dane	1055	955	100	9%	0
Dodge	278	242	36	13%	0
Door	74	70	4	5%	0
Douglas	256	242	14	5%	0
Dunn	71	64	7	10%	0
Eau Claire	314	294	20	6%	0
Florence	21	13	8	38%	0
Fond Du Lac	497	394	80	16%	23
Forest	11	10	1	9%	0
Grant	116	106	10	9%	0
Green	174	147	27	16%	0
Green Lake	55	42	13	24%	0
Iowa	86	80	6	7%	0
Iron	15	13	2	13%	0
Jackson	98	72	26	27%	0
Jefferson	185	160	25	14%	0
Juneau	57	48	9	16%	0
Kenosha	697	587	67	10%	43
Kewaunee	12	9	3	25%	0
La Crosse	341	288	53	16%	0
Lafayette	83	59	24	29%	0
Langlade	146	125	21	14%	0
Lincoln	115	101	14	12%	0
Manitowoc	401	368	33	8%	0
Marathon	361	319	42	12%	0
Marinette	22	18	4	18%	0
Marquette	61	52	9	15%	0
Menominee	64	62	2	3%	0
Milwaukee	6300	5171	1129	18%	0

APPENDIX L (Continued)

County	Total Primary Caregiver CPS Initial Assessments	Number with a Safe Safety Decision	Number with an Unsafe Safety Decision	Percent Unsafe	Number with No Safety Decision Finding
Monroe	213	204	9	4%	0
Oconto	68	60	8	12%	0
Oneida	162	143	19	12%	0
Outagamie	997	943	54	5%	0
Ozaukee	173	151	22	13%	0
Pepin	11	9	2	18%	0
Pierce	134	124	10	7%	0
Polk	240	221	19	8%	0
Portage	26	22	4	15%	0
Price	23	17	6	26%	0
Racine	815	642	66	8%	107
Richland	39	36	3	8%	0
Rock	1304	1224	80	6%	0
Rusk	69	66	3	4%	0
Saint Croix	190	184	6	3%	0
Sauk	143	119	24	17%	0
Sawyer	43	40	3	7%	0
Shawano	126	121	5	4%	0
Sheboygan	395	352	43	11%	0
Taylor	67	55	12	18%	0
Trempealeau	85	82	3	4%	0
Vernon	92	84	8	9%	0
Vilas	89	75	14	16%	0
Walworth	165	138	27	16%	0
Washburn	48	38	10	21%	0
Washington	153	141	12	8%	0
Waukesha	510	449	60	12%	1
Waupaca	215	182	33	15%	0
Waushara	121	110	11	9%	0
Winnebago	792	723	69	9%	0
Wood	399	366	33	8%	0
STATE TOTAL	21,666	18,833	2,659	12%	174

APPENDIX M

Where to Report

Listed below are the County Departments of Health and Human Services or Social Services that receive and assess child maltreatment reports. Such reports may also be made to law enforcement agencies.

Adams County Department of Health
& Social Services
108 E. North Street
P.O. Box 500
Friendship WI 53934-0500
Office Hours: 608-339-3356
After Hours: 608-339-3304

Buffalo County Department of Health
& Human Services
407 S. Second St.
P.O. Box 517
Alma WI 54610-0517
Office Hours: 608-685-4412
After Hours: 608-685-4433

Ashland County Department of
Human Services
301 Ellis Ave.
Ashland WI 54806
Office Hours: 715-682-7004
After Hours: 715-682-7023

Burnett County Department of Health
& Human Services
County Government Center
7410 County Road K #280
Siren WI 54872
Office Hours: 715-349-7600 or 715-
349-2131 After Hours: 715-349-2121

Barron County Department of Health
& Human Services
330 East LaSalle Ave., Rm. 338
Barron WI 54812
Office Hours: 715-537-5691
After Hours: 715-537-3106

Calumet County Department of
Human Services
206 Court Street
Chilton WI 53014
Office Hours: 920-849-1400
After Hours: 920-832-4646

Bayfield County Department of
Human Services
P.O. Box 100
Washburn WI 54891-0100
Office Hours: 715-373-6144
After Hours: 715-373-6120

Chippewa County Department of
Human Services
711 N. Bridge Street, Room 306
Chippewa Falls WI 54729
Office Hours: 715-726-7799
After Hours: 715-726-7830

Brown County Department of Human
Services
111 N. Jefferson Street
P.O. Box 22188
Green Bay WI 54305-2188
Office Hours: 920-448-6035
After Hours: 920-448-3200

Clark County Department of Social
Services
517 Court Street, P.O. Box 190
Neillsville WI 54456
Office Hours: 715-743-5233
After Hours: 715-743-3157

Columbia County Department of
Health & Human Services
P.O. Box 136
Portage WI 53901
Office Hours: 608-742-9227
After Hours: 608-742-7227

Crawford County Department of
Human Services
111 W. Dunn Street
Prairie du Chien WI 53821
Office Hours: 608-326-0248
After Hours: 608-326-0241

Dane County Department of Human
Services
Children, Youth & Family Intake
2322 S. Park Street
Madison WI 53713
Office Hours: 608-261-5437
After Hours: 608-255-6067

Dodge County Department of Human
Services
County Office Building
143 E. Center Street
Juneau WI 53039-1330
Office Hours: 920-386-3750
After Hours: 920-887-6713

Door County Department of Social
Services
421 Nebraska Street, P.O. Box 670
Sturgeon Bay WI 54235
Office Hours: 920-746-2300
After Hours: 920-746-2400

Douglas County Department of Health
& Human Services
1313 Belknap Street, Room 207
Superior WI 54880
Office Hours: 715-395-1304
After Hours: 715-395-1371

Dunn County Department of Human
Services
808 Main Street, P.O. Box 470
Menomonie WI 54751
Office Hours: 715-232-1116
After Hours: 715-232-5987

Eau Claire County Department of
Human Services
721 Oxford Ave., P.O. Box 840
Eau Claire WI 54702-840
Office Hours: 715-831-5700
After Hours: 715-839-4972

Florence County Department of
Human Services
501 Lake Ave., P.O. Box 170
Florence WI 54121
Office Hours: 715-528-3296
After Hours: 715-528-3346

Fond du Lac County Department of
Social Services
87 Vincent Street P.O. Box 1196
Fond du Lac WI 54936-1196
Office Hours: 920-929-3400
After Hours: 920-929-3391

Forest County Department of Social
Services
Forest County Courthouse
200 E. Madison St.
Crandon WI 54520
Office Hours: 715-478-3351
After Hours: 715-478-3331

Grant County Department of Social
Services
8820 Hwy. 35 & 61 South
P.O. Box 447
Lancaster WI 53813
Office Hours: 608-723-2136
After Hours: 608-723-2157

Green County Department of Human
Services
N3152 Highway 81, Pleasant View
Complex
Monroe WI 53566
Office Hours: 608-328-9399 or 608-
328-9393
After Hours: 608-328-9393

Green Lake County Department of Health & Human Services
500 Lake Steel Street
Green Lake WI 54941
Office Hours: 920-294-4070
After Hours: 920-294-4000

Iowa County Department of Social Services
109 W. Fountain St.
Dodgeville WI 53533
Office Hours: 608-935-9311
After Hours: 608-935-3314

Iron County Department of Human Services
Courthouse
300 Taconite Street
Hurley WI 54534
Office Hours: 715-561-3636 or 715-561-3637 or 715-561-4168
After Hours: 715-561-3800

Jackson County Department of Health and Human Services
420 Highway 54 West
P.O. Box 457
Black River Falls WI 54615
Office Hours: 715-284-4301
After Hours: 715-284-5357

Jefferson County Human Services Department
N3995 Annex Road
Jefferson WI 53549
Office/After Hours: 920-674-3105

Juneau County Department of Human Services
Courthouse Annex
220 E. LaCrosse St.
Mauston WI 53948
Office Hours: 608-847-2400
After Hours: 608-847-6161

Kenosha County Department of Human Services
8600 Sheridan Road, Suite 200
Kenosha WI 53140
Office Hours: 262-605-6582
After Hours: 262-657-7188

Kewaunee County Department of Human Services
510 Kilbourn Street
Kewaunee WI 54216
Office Hours: 920-388-3777
After Hours: 920-388-3100

LaCrosse County Human Services Department
300 North 4th Street, P.O. Box 4002
LaCrosse WI 54602
Office Hours: 608-785-6050 or 785-6054
After Hours: 608-785-9634

Lafayette County Department of Human Services
627 Main Street
Darlington WI 53530
Office Hours: 608-776-4800
After Hours: 608-776-4848

Langlade County Department of Social Services
Langlade County Health Service Center
1225 Langlade Road
Antigo WI 54409
Office Hours: 715-627-6500
After Hours: 715-623-4111

Lincoln County Department of Social Services
607 N. Sales St.
P.O. Box 547
Merrill WI 54452
Office Hours: 715-536-6200
After Hours: 715-536-6272

Manitowoc County Human Services Department
926 South 8th Street
P.O. Box 1177
Manitowoc WI 54220
Office Hours: 920-683-4230
After Hours: 920-323-2448

Marathon County Department of
Social Services
400 E. Thomas Street
Wausau WI 54403
Office Hours: 715-261-7500
After Hours: 715-261-1200

Marinette County Department of
Health & Human Services
2500 Hall Avenue, Suite B
Marinette WI 54143
Office Hours: 715-732-7700
After Hours: 715-732-7600

Marquette County Department of
Human Services
428 Underwood Avenue
P.O. Box 405
Montello WI 53949
Office Hours: 608-297-9135
After Hours: 608-297-2115

Menominee County Department of
Human Services
Social Services Building, Hwy 47
P.O. Box 280
Keshena WI 54135
Office Hours: 715-799-3861 or 715-
799-5353
After Hours: 715-799-3861

Bureau of Milwaukee Child Welfare
1555 Rivercenter Drive
Suite 220
Milwaukee WI 53212
Office Hours: 414-220-SAFE (7233)
After Hours: 414-220-SAFE (7233)

Monroe County Department of Human
Services
Community Services Center A-19
14301 County Highway B
Sparta WI 54656
Office Hours: 608-269-8630
After Hours: 911

Oconto County Department of Human
Services
501 Park Ave.
Oconto WI 54153-1612
Office Hours: 920-834-7000
After Hours: 920-834-6900

Oneida County Department of Social
Services
P.O. Box 400-Courthouse
Rhineland WI 54501
Office Hours: 715-362-5695
After Hours: 715-361-5100

Outagamie County Department of
Health and Human Services
401 South Elm Street
Appleton, WI 54911
Office Hours: 920-832-5161
After Hours: 920-832-4646

Ozaukee County Department of
Social Services
121 W. Main Street
P.O. Box 994
Port Washington WI 53074-0994
Office Hours: 262-284-8200
After Hours: 262-238-8436

Pepin County Department of Human
Services
740 7th Ave. West
Durand WI 54736
Office Hours: 715-672-8941
After Hours: 715-672-5944

Pierce County Department of Health &
Human Services
412 W. Kinne St.
P.O. Box 670
Ellsworth WI 54011
Office Hours: 715-273-6766
After Hours: 715-273-5051

Polk County Department of Human
Services
300 Polk County Plaza, Suite 110
Balsam Lake WI 54810-0219
Office Hours: 715-485-8400
After Hours: 715-485-8300

Portage County Department of Health
& Human Services
817 Whiting Avenue
Stevens Point WI 54481
Office Hours: 715-345-5350
After Hours: 715-345-5350

Price County Human Services
Department
104 South Eyder Avenue
P.O. Box 88
Phillips WI 54555
Office Hours: 715-339-2158
After Hours: 715-339-3011

Racine County Human Services
Department
1717 Taylor
Racine WI 53403
Office Hours/After Hours: 262-638-
6321

Richland County Department of
Health & Human Services
221 West Seminary
Richland Center WI 53581
Office Hours: 608-647-8821
After Hours: 608-647-2106

Rock County Human Services
Department
3530 N. County Trunk F
P.O. Box 1649
Janesville WI 53547-1649
Office Hours: 608-757-5401
After Hours: 608-757-2244

Rusk County Department of Health &
Human Services
Courthouse
311 East Miner Suite C-240
Ladysmith WI 54848
Office Hours: 715-532-2299
After Hours: 715-532-2299

Sauk County Department of Human
Services
505 Broadway, 4th Floor
P.O. Box 29
Baraboo WI 53913
Office Hours: 608-355-4200
After Hours: 1-800-533-5692

Sawyer County Department of Health
& Human Services
105 E. 4th Street, P.O. Box 730
Hayward WI 54843
Office Hours: 715-634-4806
After Hours: 715-634-4858

Shawano County Department of
Social Services
P.O. Box 434
Shawano WI 54166
Office Hours: 715-526-4700
After Hours: 715-526-3100

Sheboygan County Health & Human
Services Department
1011 North 8th Street
Sheboygan WI 53081
Office Hours: 920-459-6418
After Hours: 414-459-3111

St. Croix County Department of
Health & Human Services
1445 North 4th Street
New Richmond WI 54017
Office Hours: 715-246-6991
After Hours: 715-246-6991

Taylor County Human Services
Department
340 East College Street
Medford WI 54451
Office Hours: 715-748-3332
After Hours: 715-748-2200

Trempealeau County Department of
Social Services
Courthouse, P.O. Box 67
Whitehall WI 54773
Office Hours: 715-538-2311 ext. 290
After Hours: 715-538-4351

Vernon County Department of Human Services
E 7419 County Home Road, P.O. Box 823
Viroqua WI 54665
Office Hours: 608-637-5210
After Hours: 608-637-2124

Vilas County Department of Social Services
330 Court Street
Eagle River WI 54521
Office Hours: 715-479-3668
After Hours: 715-479-4441

Walworth County Department of Health & Human Services
W3955 Hwy NN, Box 1005
Elkhorn WI 53121
Office Hours: 262-741-3200/1-800-365-1587
After Hours: 262-741-3200/1-800-365-1587

Washburn County Department of Health & Human Services

Waupaca County Department of Health & Human Services
811 Harding Street
Waupaca WI 54981-2087
Office Hours: 715-258-6300
After Hours: 715-258-4466

Waushara County Department of Social Services
P.O. Box 1230
Wautoma WI 54982-1230
Office Hours: 920-787-3303
After Hours: 920-787-3321

Winnebago County Department of Human Services
220 Washington Avenue
P.O. Box 2925
Oshkosh WI 54903-2925
Office Hours: 920-236-4600
After Hours: 920-233-7707

Wood County Department of Social Services

P.O. Box 250
Shell Lake WI 54871
Office Hours: 715-468-4747
After Hours: 715-468-2721

Washington County Department of Social Services
333 E. Washington St.
Suite 3100
West Bend WI 53095
Office Hours: 262-335-4610
After Hours: 262-335-4670

Waukesha County Department of Health & Human Services
500 Riverview Ave.
Waukesha WI 53188
Office Hours: 262--548-7212/548-7666
After Hours: 262-547-7731

(South Wood County Office)
Courthouse, 400 Market Street
P.O. Box 8095
Wisconsin Rapids WI 54495-8095
Office Hours: 715-421-8600
After Hours: 715-421-860