

Wisconsin
Child Abuse and Neglect
Report

Appendices

2008 Data

Bureau of Program Integrity
Division of Safety and Permanence
Wisconsin Department of Children and Families

APPENDIX A

Child Maltreatment Related Statutes

Following are excerpts from the Wisconsin statutes that create the basis for persons to report suspected child maltreatment and for child protective services agencies to respond. The excerpts are from the updated 2007-2008 Wisconsin statutes, current as of March 31, 2010. (**Note:** The excerpts appear exactly as they would appear in the published statutes. Therefore, other portions of the statutes not relevant to child maltreatment are included.)

Included in the excerpts are sections from chapter 48, known as the Children's Code, and sections from criminal statutes that are cross-referenced in the Children's Code in order to define child.

- **s. 48.01, Stats., Title and legislative purpose.**
- **s. 48.02, Stats., Definitions.** This includes definitions of child maltreatment.
- **s. 48.13, Stats., Jurisdiction over children alleged to be in need of protection or services.** This describes the basis on which the local child protective services agencies (county social/human services departments and the Bureau of Milwaukee Child Welfare) may petition the court to intervene with a family.
- **s. 48.981, Stats., Abused or neglected children and abused unborn children.** This section defines child neglect, describes the reporting requirements of alleged child maltreatment and describes the child protective services agencies' duties and responsibilities.
- **s. 939.22, Stats., Words and phrases defined.** This section defines terms that are used in describing certain crimes, some of which are cross-referenced in s. 48.02, Stats., in order to define child maltreatment.
- **s. 940.225, Stats., Sexual assault.** This defines the crime of sexual assault and is cross-referenced under s. 48.02(1)(b), Stats.
- **s. 944.30, Stats., Prostitution.** This defines the crime of prostitution and is cross-referenced under s. 48.02(1)(d), Stats.
- **s. 948.02, Stats., Sexual assault of a child.** This is the first in a series of crimes from chapter 948, known as Crimes Against Children that are cross-referenced under s. 48.02(1)(b), Stats., in order to define child sexual abuse. The following sections are also cross-referenced under s. 48.02(1), Stats.:
- **s. 948.025, Stats., Engaging in repeated acts of sexual assault of the same child.**
- **s. 948.05, Stats., Sexual exploitation of a child.**
- **s. 948.055, Stats., Causing a child to view or listen to sexual activity.**
- **s. 948.085, Stats., Sexual assault of a child placed in substitute care.**
- **s. 948.10, Stats., Exposing genitals or pubic area.**

The complete Wisconsin statutes can be viewed at the Wisconsin State Legislature website: <http://www.legis.state.wi.us/rsb/stats.html>.

APPENDIX B

Unborn Child Abuse

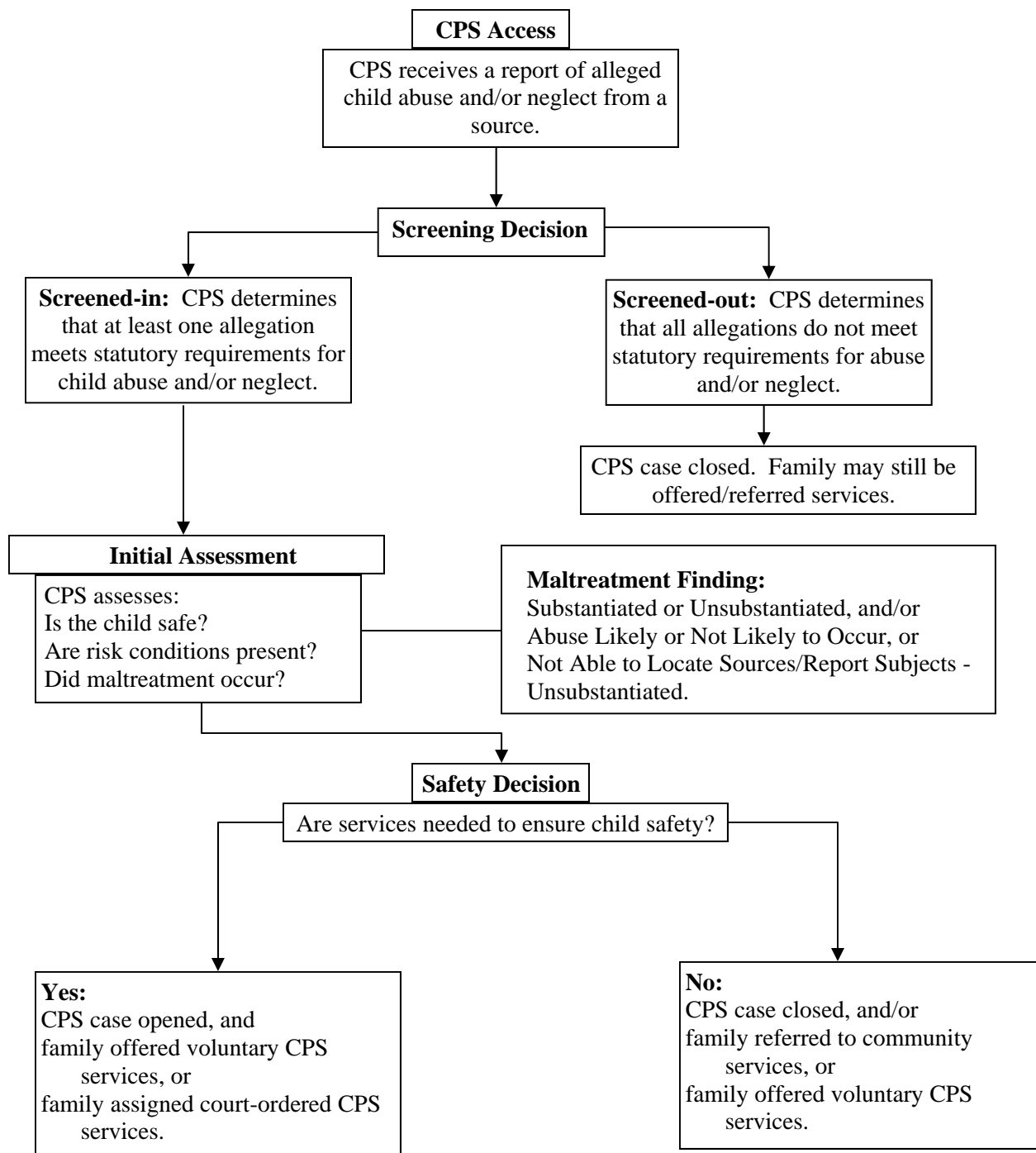
Unborn child abuse is defined as “serious physical harm inflicted on the unborn child, and the risk of serious physical harm to the child when born, caused by the habitual lack of self-control of the expectant mother of the unborn child in the use of alcohol beverages, controlled substances or controlled substance analogs, exhibited to a severe degree.” [Ref. s. 48.02(1)(am), Stats.]

The maltreatment allegation of unborn child abuse is excluded from maltreatment allegation counts in the body of this report and presented here separately.

- In calendar year 2008, CPS agencies screened-in 332 allegations of unborn child abuse for further assessment.
- The most common reporters of screened-in unborn child abuse allegations were social service workers (31%), legal/law enforcement (14%), and medical professionals (10%).
- Forty-nine of the 332 screened-in allegations (15%) of unborn child abuse were substantiated after the CPS initial assessment.
- Of the CPS initial assessments which had a substantiated unborn child abuse allegation, 53% were opened or already opened for CPS services.
- Twenty-two children were placed in out-of-home care after the child’s birth as a part of the CPS initial assessment of unborn child abuse.

APPENDIX C

An Overview of the CPS Process



APPENDIX D

Data Collection and Interpretation**Data Collection Process**

The child maltreatment data collected for calendar year 2008 is from the electronic Wisconsin Statewide Automated Child Welfare Information System (eWiSACWIS). eWiSACWIS allows case workers, supervisors and administrators to manage child welfare services and supports practice responsibilities related to CPS access, initial assessment, case management, court process, out-of-home placements, and more. Compared with the previous child maltreatment data source, the CFS-40 form, use of the eWiSACWIS system greatly expands the type of data collected and also improves the timeliness and accuracy of child welfare data. The quality of the data in this report is dependent upon the accuracy and timeliness of data recorded by the local agencies.

The historical data in this report (prior to 2005) includes data from both eWiSACWIS and the CFS-40 forms. Previously, counties completed CFS-40 forms at the conclusion of CPS initial assessments and data from this form was manually entered into a child maltreatment database. CPS agencies began using eWiSACWIS in 2001 and statewide rollout of the system was completed in 2004. The implications of using the more robust eWiSACWIS data and the transition from CFS-40 data to eWiSACWIS data are discussed in the next section.

Data Interpretation

As with previous publications, data for the 2008 edition of the Wisconsin Child Abuse and Neglect Report includes some cases in which the alleged maltreatment occurred in a previous year but was reported and assessed in 2008.

The 2008 Wisconsin Child Abuse and Neglect Report is the fourth year in which data was taken entirely from the eWiSACWIS system. As counties have increased experience using the eWiSACWIS system, the 2008 data has become more stable and reliable. In graphs which depict historical trends, differences in counts between calendar years 2004 and 2005 can be seen. These differences coincide with the transition from the legacy CFS-40 data system to eWiSACWIS and may be attributable to varied data entry practices between and functions of the two systems. In 2005 and 2006, the eWiSACWIS system required entry of a new allegation for every maltreater alleged for each child. Therefore, if neglect was alleged for one child by both parents it counted as 2 neglect allegations. The legacy CFS-40 data system counted allegations once per maltreatment type per child (regardless of the number of maltreaters).

In September 2007, the eWiSACWIS system was modified to allow allegations to be counted once per maltreatment type per child while also separately maintaining data on maltreaters. The impact of these data entry practices are most readily seen in the neglect maltreatment type as these situations more often involve maltreatment by multiple individuals.

Changes in child welfare policy and practice have also impacted the use of the abuse likely to occur finding in calendar year 2007. At the beginning of calendar year 2007, the BMCW discontinued use of abuse likely to occur allegation type. Then, with the release of the new statewide Access and Initial Assessment Standards in September 2007, the abuse likely to occur allegation was removed as a maltreatment type for the entire state. The abuse likely to occur allegation type was discontinued because it lacked a definition that would allow consistent usage and make it clearly distinguishable from the other maltreatment types. It was found that the abuse likely to occur allegation could be more appropriately categorized under one of the other maltreatment types to represent the risk of maltreatment, in most cases neglect. The 2008 data is the first calendar year with no abuse likely to occur data.

Mutual Sexual Activity

Mutual sexual activity by minors is excluded from all data tables and figures which depict calendar year 2005 - 2008 data. Mutual sexual activity by minors appears in counts in graphs which depict data prior to 2005. In 2008, there were 260 screened-in allegations of mutual sexual activity by minors.

APPENDIX E

Total Referrals and Screening Decisions by County, 2008

County	Total CPS Referrals	Screen-out CPS Referrals	Percent Screen-out	Screen-in CPS Referrals	Percent Screen-in	Screen-in Service Referrals*	Screen-out Service Referrals*
Adams	174	113	65%	61	35%	174	89
Ashland	196	150	77%	46	23%	180	115
Barron	645	436	68%	209	32%	213	246
Bayfield	120	53	44%	67	56%	101	65
Brown	2,949	2,140	73%	809	27%	229	70
Buffalo	89	49	55%	40	45%	63	26
Burnett	120	75	63%	45	38%	116	101
Calumet	395	240	61%	155	39%	18	8
Chippewa	468	324	69%	144	31%	145	44
Clark	301	179	59%	122	41%	201	118
Columbia	235	76	32%	159	68%	561	383
Crawford	77	30	39%	47	61%	131	85
Dane	3,362	2,132	63%	1,230	37%	1,579	1,253
Dodge	642	379	59%	263	41%	292	32
Door	135	46	34%	89	66%	217	32
Douglas	785	585	75%	200	25%	301	43
Dunn	277	179	65%	98	35%	140	112
Eau Claire	1,259	951	76%	308	24%	213	329
Florence	29	10	34%	19	66%	32	1
Fond Du Lac	529	49	9%	480	91%	826	790
Forest	60	27	45%	33	55%	108	88
Grant	399	217	54%	182	46%	541	63
Green	463	227	49%	236	51%	60	26
Green Lake	95	39	41%	56	59%	245	106
Iowa	229	121	53%	108	47%	126	14
Iron	31	9	29%	22	71%	34	8
Jackson	335	223	67%	112	33%	217	164
Jefferson	310	129	42%	181	58%	482	102
Juneau	136	38	28%	98	72%	226	89
Kenosha	1,130	337	30%	793	70%	869	484
Kewaunee	71	59	83%	12	17%	37	40
La Crosse	1,364	950	70%	414	30%	86	89
Lafayette	149	70	47%	79	53%	69	14
Langlade	462	186	40%	276	60%	261	121
Lincoln	274	143	52%	131	48%	264	52
Manitowoc	1,070	562	53%	508	47%	301	153
Marathon	1,179	685	58%	494	42%	749	65
Marinette	425	410	96%	15	4%	85	38
Marquette	103	40	39%	63	61%	123	73
Menominee	126	63	50%	63	50%	144	59
Milwaukee	13,514	5,000	37%	8,514	63%	2,556	593

APPENDIX E (Continued)

County	Total CPS Referrals	Screen-out CPS Referrals	Percent Screen-out	Screen-in CPS Referrals	Percent Screen-in	Screen-in Service Referrals*	Screen-out Service Referrals*
Monroe	600	334	56%	266	44%	346	14
Oconto	196	120	61%	76	39%	257	182
Oneida	259	26	10%	233	90%	321	26
Outagamie	2,475	1,414	57%	1,061	43%	150	243
Ozaukee	360	151	42%	209	58%	42	56
Pepin	13	5	38%	8	62%	48	29
Pierce	373	234	63%	139	37%	238	104
Polk	677	446	66%	231	34%	292	12
Portage	409	257	63%	152	37%	232	5
Price	104	68	65%	36	35%	176	2
Racine	3,038	1,986	65%	1,052	35%	1,736	21
Richland	137	61	45%	76	55%	120	140
Rock	2,280	719	32%	1,561	68%	2,003	809
Rusk	261	178	68%	83	32%	133	85
Saint Croix	535	297	56%	238	44%	476	157
Sauk	318	177	56%	141	44%	474	396
Sawyer	122	66	54%	56	46%	263	183
Shawano	241	61	25%	180	75%	446	231
Sheboygan	1,130	619	55%	511	45%	1,040	12
Taylor	210	138	66%	72	34%	64	10
Trempealeau	325	190	58%	135	42%	111	50
Vernon	208	115	55%	93	45%	163	24
Vilas	134	12	9%	122	91%	129	123
Walworth	695	385	55%	310	45%	582	68
Washburn	75	43	57%	32	43%	143	56
Washington	557	379	68%	178	32%	341	314
Waukesha	1,710	1,096	64%	614	36%	109	24
Waupaca	637	397	62%	240	38%	354	35
Waushara	292	160	55%	132	45%	121	15
Winnebago	2,364	1,387	59%	977	41%	1,586	61
Wood	1,487	982	66%	505	34%	202	49
STATE TOTAL	56,934	30,234	53%	26,700	47%	27,420	9,941

*Source: Data about service referrals was compiled using the WiSACWIS sm0201 Access Report. Service referrals represent contacts and decision made where CPS issues were not identified as part of the report. Decisions about documentation of service referrals are not governed by statute and are determined by local agency practice.

APPENDIX F

CPS Reports Per 1,000 Children by County, 2008

County	Child Population (Ages 0-17)*	Number of CPS Reports	CPS Reports per 1,000 Population
Adams	3,494	99	28.3
Ashland	3,714	56	15.1
Barron	9,780	329	33.6
Bayfield	2,932	102	34.8
Brown	60,251	1,241	20.6
Buffalo	2,943	60	20.4
Burnett	3,128	70	22.4
Calumet	11,654	229	19.6
Chippewa	13,671	227	16.6
Clark	9,254	197	21.3
Columbia	12,413	199	16.0
Crawford	3,782	68	18.0
Dane	105,929	1,682	15.9
Dodge	18,517	362	19.5
Door	5,083	126	24.8
Douglas	9,478	323	34.1
Dunn	8,794	137	15.6
Eau Claire	21,161	467	22.1
Florence	831	28	33.7
Fond du Lac	22,268	762	34.2
Forest	2,132	51	23.9
Grant	10,025	258	25.7
Green	8,396	371	44.2
Green Lake	3,986	73	18.3
Iowa	5,659	142	25.1
Iron	973	29	29.8
Jackson	4,298	168	39.1
Jefferson	18,268	258	14.1
Juneau	5,657	119	21.0
Kenosha	42,297	1,085	25.7
Kewaunee	4,420	16	3.6
La Crosse	24,261	609	25.1
Lafayette	3,680	121	32.9
Langlade	4,175	436	104.4
Lincoln	6,460	182	28.2
Manitowoc	17,434	747	42.8
Marathon	30,976	729	23.5
Marinette	8,442	18	2.1
Marquette	3,022	97	32.1
Menominee	1,580	90	57.0
Milwaukee	250,167	12,993	51.9

APPENDIX F (Continued)

County	Child Population (Ages 0-17)*	Number of CPS Reports	CPS Reports per 1,000 Population
Monroe	11,108	375	33.8
Oconto	7,999	92	11.5
Oneida	6,693	289	43.2
Outagamie	43,282	1,523	35.2
Ozaukee	19,105	319	16.7
Pepin	1,657	8	4.8
Pierce	8,635	208	24.1
Polk	10,004	356	35.6
Portage	14,361	212	14.8
Price	2,721	48	17.6
Racine	49,537	1,518	30.6
Richland	3,908	102	26.1
Rock	39,328	2,467	62.7
Rusk	3,135	114	36.4
Saint Croix	21,234	324	15.3
Sauk	13,838	205	14.8
Sawyer	3,679	85	23.1
Shawano	9,296	264	28.4
Sheboygan	26,479	761	28.7
Taylor	4,338	120	27.7
Trempealeau	6,437	172	26.7
Vernon	7,286	127	17.4
Vilas	3,848	159	41.3
Walworth	22,667	390	17.2
Washburn	3,383	46	13.6
Washington	30,360	229	7.5
Waukesha	86,910	815	9.4
Waupaca	11,483	343	29.9
Waushara	4,937	220	44.6
Winnebago	35,166	1,493	42.5
Wood	16,213	753	46.4
STATE TOTAL	1,314,412	39,493	30.0

*Source: Easy Access to Juvenile Populations, <http://ojjdp.ncjrs.gov/ojstatbb/ezapop/>

NOTE: This report only includes screened-in CPS reports which had a supervisor approved CPS initial assessment as of November 2, 2009. Screened-in CPS reports are not included in this report if they did not have an approved initial assessment by that date.

APPENDIX G

County Substantiation Rates, 2008

County	Number of Initial Assessments	Number of CPS Reports	Maltreatment Substantiation Count	Maltreatment Substantiation Rate
Adams	61	99	20	20%
Ashland	46	56	11	20%
Barron	208	329	61	19%
Bayfield	67	102	6	6%
Brown	786	1241	208	17%
Buffalo	39	60	5	8%
Burnett	41	70	8	11%
Calumet	146	229	31	14%
Chippewa	137	227	50	22%
Clark	117	197	36	18%
Columbia	152	199	33	17%
Crawford	47	68	11	16%
Dane	1146	1682	310	18%
Dodge	263	362	79	22%
Door	89	126	30	24%
Douglas	197	323	32	10%
Dunn	97	137	59	43%
Eau Claire	308	467	60	13%
Florence	19	28	20	71%
Fond du Lac	457	762	93	12%
Forest	33	51	9	18%
Grant	177	258	33	13%
Green	229	371	42	11%
Green Lake	53	73	15	21%
Iowa	101	142	24	17%
Iron	22	29	3	10%
Jackson	112	168	39	23%
Jefferson	176	258	91	35%
Juneau	98	119	10	8%
Kenosha	793	1085	154	14%
Kewaunee	11	16	6	38%
La Crosse	386	609	55	9%
Lafayette	75	121	41	34%
Langlade	251	436	133	31%
Lincoln	129	182	19	10%
Manitowoc	479	747	154	21%
Marathon	478	729	128	18%
Marinette	15	18	8	44%
Marquette	59	97	20	21%
Menominee	62	90	20	22%
Milwaukee	7602	12993	1438	11%

APPENDIX G (Continued)

County	Number of Initial Assessments	Number of CPS Reports	Maltreatment Substantiation Count	Maltreatment Substantiation Rate
Monroe	262	375	52	14%
Oconto	74	92	12	13%
Oneida	224	289	67	23%
Outagamie	974	1523	172	11%
Ozaukee	204	319	41	13%
Pepin	8	8	3	38%
Pierce	131	208	25	12%
Polk	215	356	45	13%
Portage	143	212	41	19%
Price	36	48	14	29%
Racine	1009	1518	221	15%
Richland	76	102	17	17%
Rock	1430	2467	327	13%
Rusk	82	114	13	11%
Saint Croix	209	324	40	12%
Sauk	127	205	41	20%
Sawyer	56	85	17	20%
Shawano	171	264	37	14%
Sheboygan	498	761	102	13%
Taylor	72	120	25	21%
Trempealeau	129	172	7	4%
Vernon	91	127	13	10%
Vilas	116	159	38	24%
Walworth	294	390	123	32%
Washburn	31	46	23	50%
Washington	170	229	48	21%
Waukesha	596	815	259	32%
Waupaca	226	343	61	18%
Waushara	127	220	31	14%
Winnebago	875	1493	209	14%
Wood	481	753	139	18%
STATE TOTAL	24901	39493	5868	15%

APPENDIX H

Child Victimization Rate by County, 2008

County	Child Population (Ages 0-17)*	Number of Child Victims	Child Victims per 1,000 Population
Adams	3,494	19	5.4
Ashland	3,714	10	2.7
Barron	9,780	52	5.3
Bayfield	2,932	6	2.0
Brown	60,251	178	3.0
Buffalo	2,943	5	1.7
Burnett	3,128	6	1.9
Calumet	11,654	26	2.2
Chippewa	13,671	39	2.9
Clark	9,254	30	3.2
Columbia	12,413	27	2.2
Crawford	3,782	11	2.9
Dane	105,929	250	2.4
Dodge	18,517	75	4.1
Door	5,083	26	5.1
Douglas	9,478	24	2.5
Dunn	8,794	55	6.3
Eau Claire	21,161	58	2.7
Florence	831	16	19.3
Fond du Lac	22,268	83	3.7
Forest	2,132	9	4.2
Grant	10,025	25	2.5
Green	8,396	35	4.2
Green Lake	3,986	14	3.5
Iowa	5,659	23	4.1
Iron	973	2	2.1
Jackson	4,298	36	8.4
Jefferson	18,268	81	4.4
Juneau	5,657	8	1.4
Kenosha	42,297	140	3.3
Kewaunee	4,420	5	1.1
La Crosse	24,261	50	2.1
Lafayette	3,680	30	8.2
Langlade	4,175	94	22.5
Lincoln	6,460	19	2.9
Manitowoc	17,434	118	6.8
Marathon	30,976	120	3.9
Marinette	8,442	6	0.7
Marquette	3,022	12	4.0
Menominee	1,580	15	9.5
Milwaukee	250,167	1,162	4.6

APPENDIX H (Continued)

County	Child Population (Ages 0-17)*	Number of Child Victims	Child Victims per 1,000 Population
Monroe	11,108	48	4.3
Oconto	7,999	11	1.4
Oneida	6,693	58	8.7
Outagamie	43,282	148	3.4
Ozaukee	19,105	30	1.6
Pepin	1,657	3	1.8
Pierce	8,635	25	2.9
Polk	10,004	36	3.6
Portage	14,361	31	2.2
Price	2,721	11	4.0
Racine	49,537	203	4.1
Richland	3,908	14	3.6
Rock	39,328	256	6.5
Rusk	3,135	10	3.2
Saint Croix	21,234	35	1.6
Sauk	13,838	34	2.5
Sawyer	3,679	15	4.1
Shawano	9,296	30	3.2
Sheboygan	26,479	85	3.2
Taylor	4,338	24	5.5
Trempealeau	6,437	6	0.9
Vernon	7,286	10	1.4
Vilas	3,848	24	6.2
Walworth	22,667	99	4.4
Washburn	3,383	21	6.2
Washington	30,360	40	1.3
Waukesha	86,910	221	2.5
Waupaca	11,483	43	3.7
Waushara	4,937	23	4.7
Winnebago	35,166	155	4.4
Wood	16,213	116	7.2
STATE TOTAL	1,314,412	4,865	3.7

*Source: Easy Access to Juvenile Populations, <http://ojjdp.ncjrs.gov/ojstatbb/ezapop/>

APPENDIX I

**Total Maltreatment Allegations by Maltreatment Type and
Maltreatment Finding by County, 2008**

County	Total Reports	ALLEGATIONS BY TYPE															
		Emotional Abuse				Neglect				Physical Abuse				Sexual Abuse			
		S	U	N	Total	S	U	N	Total	S	U	N	Total	S	U	N	Total
Adams	113		1		1	11	25		36	1	30	2	33	8	28	7	43
Ashland	60	1	1		2	3	15		18	3	17	1	21	4	13	2	19
Barron	388		3		3	37	210	4	251	7	51	2	60	17	52	5	74
Bayfield	110		3		3		40		40	2	38	3	43	4	19	1	24
Brown	1,425		19	2	21	131	681	65	877	37	276	17	330	40	142	15	197
Buffalo	73		1		1	1	36		37	1	18	1	20	3	11	1	15
Burnett	76		3		3	2	34		36	1	27	1	29	5	3		8
Calumet	280		8		8	12	112	1	125	4	80		84	15	46	2	63
Chippewa	255		7		7	29	114		143	14	42		56	7	42		49
Clark	243		13		13	19	114		133	5	42	1	48	12	37		49
Columbia	239		4		4	17	54	2	73	10	93		103	6	53		59
Crawford	73		7		7	2	29	1	32	2	15		17	7	10		17
Dane	1,876	2	31		33	161	775	12	948	76	544	9	629	71	187	8	266
Dodge	389					38	151	6	195	16	82		98	25	71		96
Door	140		2		2	16	51	5	72	2	22	2	26	12	22	6	40
Douglas	377	1	3		4	20	220	2	242	5	82		87	6	35	3	44
Dunn	142	2	1		3	39	32	2	73	9	23		32	9	25		34
Eau Claire	506	3	16		19	35	215	6	256	8	123	2	133	14	82	2	98
Florence	34					13	12		25	2	1		3	5	1		6
Fond Du Lac	877		7		7	46	499	11	556	19	210	2	231	28	54	1	83
Forest	54		2		2	5	15	6	26	1	16	2	19	3	4		7
Grant	305		11		11	12	108	3	123	11	97	2	110	10	44	7	61
Green	428	1	7		8	24	171	13	208	7	109		116	10	81	5	96
Green Lake	79					3	12		15	7	24	1	32	5	23	4	32
Iowa	164	1	10		11	3	60	1	64	10	50		60	10	14	5	29
Iron	34		1		1	1	18		19		9		9	2	3		5
Jackson	184		12	1	13	19	49	10	78	14	53	2	69	6	18		24
Jefferson	289		2		2	44	78		122	12	58	3	73	35	52	5	92
Juneau	126		4		4	5	43		48	4	55	2	61	1	11	1	13
Kenosha	1,183		3		3	48	384	11	443	64	487	6	557	42	131	7	180
Kewaunee	16					4	4		8		4		4	2	2		4
La Crosse	639	2	4		6	21	305	25	351	10	138	1	149	22	105	6	133
Lafayette	142		7		7	30	53		83	6	27		33	5	14		19
Langlade	520		16		16	103	223	10	336	10	81		91	20	57		77
Lincoln	187	1	2		3	14	102	2	118		42		42	4	19	1	24
Manitowoc	905	1	25		26	103	432	7	542	12	217	1	230	38	69		107
Marathon	771		7		7	84	365	5	454	16	175	5	196	28	85	1	114
Marinette	26		4		4	7	5		12		6		6	1	3		4
Marquette	126		4		4	10	37		47	2	38		40	8	27		35
Menominee	100					13	36	8	57	2	21	2	25	5	11	2	18
Milwaukee	14,528	5	230	8	243	757	7,169	441	8,367	341	3,869	146	4,356	335	1,154	73	1,562

APPENDIX I (Continued)

County	Total Reports	ALLEGATIONS BY TYPE															
		Emotional Abuse				Neglect				Physical Abuse				Sexual Abuse			
		S	U	N	Total	S	U	N	Total	S	U	N	Total	S	U	N	Total
Monroe	400					28	187	1	216	12	121	1	134	12	31	7	50
Oconto	97					5	20		25	3	33		36	4	32		36
Oneida	308		3		3	49	73	6	128	6	70	1	77	12	79	9	100
Outagamie	1,667		33		33	81	818	17	916	30	457	3	490	61	166	1	228
Ozaukee	378	1	37		38	28	153	4	185	7	106		113	5	31	6	42
Pepin	8									2	2		4	1	3		4
Pierce	228		13		13	8	104	5	117	8	60		68	9	21		30
Polk	411	3	25		28	27	197	8	232	4	77	2	83	11	50	7	68
Portage	229		6		6	22	103	1	126	2	48		50	17	28	2	47
Price	64		6		6	5	15		20	3	19		22	6	8	2	16
Racine	1,581		1		1	65	567	87	719	44	324	27	395	112	305	49	466
Richland	110		2		2	9	35		44	5	40	1	46	3	15		18
Rock	2,845		33		33	192	1,329	15	1,536	59	738	11	808	76	374	18	468
Rusk	128		3		3	1	47		48	1	35		36	11	30		41
Saint Croix	342		4		4	15	160	2	177	9	102	2	113	16	31	1	48
Sauk	222		6		6	14	95	6	115	16	47		63	11	24	3	38
Sawyer	97		2		2	11	40		51	2	30		32	4	8		12
Shawano	284		11		11	17	139	4	160	12	49		61	8	44		52
Sheboygan	863	3	71	2	76	51	429	9	489	21	190	2	213	27	56	2	85
Taylor	131		4		4	14	63	1	78	1	31		32	10	7		17
Trempealeau	206		5		5	1	104		105	1	69		70	5	21		26
Vernon	154		6		6	3	74		77	8	46	1	55	2	14		16
Vilas	193		3		3	17	67		84	8	43	1	52	13	30	11	54
Walworth	434		6		6	34	127	4	165	29	70	4	103	60	95	5	160
Washburn	51		1		1	20	7		27		13		13	3	7		10
Washington	250		2		2	25	66	2	93	18	77		95	5	52	3	60
Waukesha	895	3	5		8	122	316	1	439	38	210		248	96	101	3	200
Waupaca	397	4	19		23	31	158		189	11	98		109	15	61		76
Waushara	308		8		8	15	176	2	193	4	70		74	12	21		33
Winnebago	1,651	1	13		14	130	847	30	1,007	30	399	9	438	48	140	4	192
Wood	844	1	7	2	10	81	371	15	467	28	208	3	239	29	97	2	128
Grand Total	44,258	36	816	15	867	3,063	19,975	879	23,917	1,175	11,274	284	12,733	1,594	4,842	305	6,741

* The sum of the totals of each type of allegation may exceed the total number of reports because there may be more than one allegation per report. The totals for sexual abuse exclude cases of mutual sexual activity.

APPENDIX J

**County Maltreatment Allegation Substantiation Rate By
Maltreatment Type, 2008**

County	Neglect Substantiation Percent	Physical Abuse Substantiation Percent	Sexual Abuse Substantiation Percent	Emotional Abuse Substantiation Percent
Adams	31%	3%	19%	0%
Ashland	17%	14%	21%	50%
Barron	15%	12%	23%	0%
Bayfield	0%	5%	17%	0%
Brown	15%	11%	20%	0%
Buffalo	3%	5%	20%	0%
Burnett	6%	3%	63%	0%
Calumet	10%	5%	24%	0%
Chippewa	20%	25%	14%	0%
Clark	14%	10%	24%	0%
Columbia	23%	10%	10%	0%
Crawford	6%	12%	41%	0%
Dane	17%	12%	27%	6%
Dodge	19%	16%	26%	N/A
Door	22%	8%	30%	0%
Douglas	8%	6%	14%	25%
Dunn	53%	28%	26%	67%
Eau Claire	14%	6%	14%	16%
Florence	52%	67%	83%	N/A
Fond du Lac	8%	8%	34%	0%
Forest	19%	5%	43%	0%
Grant	10%	10%	16%	0%
Green	12%	6%	10%	13%
Green Lake	20%	22%	16%	N/A
Iowa	5%	17%	34%	9%
Iron	5%	0%	40%	0%
Jackson	24%	20%	25%	0%
Jefferson	36%	16%	38%	0%
Juneau	10%	7%	8%	0%
Kenosha	11%	11%	23%	0%
Kewaunee	50%	0%	50%	N/A
La Crosse	6%	7%	17%	33%
Lafayette	36%	18%	26%	0%
Langlade	31%	11%	26%	0%
Lincoln	12%	0%	17%	33%
Manitowoc	19%	5%	36%	4%
Marathon	19%	8%	25%	0%
Marinette	58%	0%	25%	0%
Marquette	21%	5%	23%	0%
Menominee	23%	8%	28%	N/A
Milwaukee	9%	8%	21%	2%

APPENDIX J (Continued)

County	Neglect Substantiation Rate	Physical Abuse Substantiation Rate	Sexual Abuse Substantiation Rate	Emotional Abuse Substantiation Rate
Monroe	13%	9%	24%	N/A
Oconto	20%	8%	11%	N/A
Oneida	38%	8%	12%	0%
Outagamie	9%	6%	27%	0%
Ozaukee	15%	6%	12%	3%
Pepin	N/A	50%	25%	N/A
Pierce	7%	12%	30%	0%
Polk	12%	5%	16%	11%
Portage	17%	4%	36%	0%
Price	25%	14%	38%	0%
Racine	9%	11%	24%	0%
Richland	20%	11%	17%	0%
Rock	13%	7%	16%	0%
Rusk	2%	3%	27%	0%
Saint Croix	8%	8%	33%	0%
Sauk	12%	25%	29%	0%
Sawyer	22%	6%	33%	0%
Shawano	11%	20%	15%	0%
Sheboygan	10%	10%	32%	4%
Taylor	18%	3%	59%	0%
Trempealeau	1%	1%	19%	0%
Vernon	4%	15%	13%	0%
Vilas	20%	15%	24%	0%
Walworth	21%	28%	38%	0%
Washburn	74%	0%	30%	0%
Washington	27%	19%	8%	0%
Waukesha	28%	15%	48%	38%
Waupaca	16%	10%	20%	17%
Waushara	8%	5%	36%	0%
Winnebago	13%	7%	25%	7%
Wood	17%	12%	23%	10%
STATE TOTAL	13%	9%	24%	4%

NOTE: Refer to Appendix I for counts of maltreatment allegations.

APPENDIX K

Percentage of CPS Initial Assessments by Type by County, 2008

County	Total CPS Initial Assessments	Primary Caregiver CPS Initial Assessments	Percent Primary	Secondary CPS Initial Assessments/ Non-Caregiver Investigations	Percent Secondary/ Non-Caregiver
Adams	61	50	82%	11	18%
Ashland	46	27	59%	19	41%
Barron	208	189	91%	19	9%
Bayfield	67	57	85%	10	15%
Brown	786	733	93%	53	7%
Buffalo	39	34	87%	5	13%
Burnett	41	38	93%	3	7%
Calumet	146	146	100%	-	0%
Chippewa	137	120	88%	17	12%
Clark	117	108	92%	9	8%
Columbia	152	124	82%	28	18%
Crawford	47	40	85%	7	15%
Dane	1,146	1,085	95%	61	5%
Dodge	263	246	94%	17	6%
Door	89	63	71%	26	29%
Douglas	197	182	92%	15	8%
Dunn	97	93	96%	4	4%
Eau Claire	308	282	92%	26	8%
Florence	19	14	74%	5	26%
Fond du Lac	457	457	100%	-	0%
Forest	33	23	70%	10	30%
Grant	177	162	92%	15	8%
Green	229	208	91%	21	9%
Green Lake	53	31	58%	22	42%
Iowa	101	82	81%	19	19%
Iron	22	18	82%	4	18%
Jackson	112	105	94%	7	6%
Jefferson	176	154	88%	22	13%
Juneau	98	93	95%	5	5%
Kenosha	793	791	100%	2	0%
Kewaunee	11	7	64%	4	36%
La Crosse	386	330	85%	56	15%
Lafayette	75	68	91%	7	9%
Langlade	251	202	80%	49	20%
Lincoln	129	116	90%	13	10%
Manitowoc	479	433	90%	46	10%
Marathon	478	430	90%	48	10%
Marinette	15	13	87%	2	13%
Marquette	59	52	88%	7	12%
Menominee	62	54	87%	8	13%
Milwaukee	7,602	6,956	92%	646	8%

APPENDIX K (Continued)

County	Total CPS Initial Assessments	Primary Caregiver CPS Initial Assessments	Percent Primary	Secondary CPS Initial Assessments/ Non-Caregiver Investigations	Percent Secondary/ Non-Caregiver
Monroe	262	243	93%	19	7%
Oconto	74	65	88%	9	12%
Oneida	224	145	65%	79	35%
Outagamie	974	842	86%	132	14%
Ozaukee	204	197	97%	7	3%
Pepin	8	4	50%	4	50%
Pierce	131	116	89%	15	11%
Polk	215	202	94%	13	6%
Portage	143	121	85%	22	15%
Price	36	25	69%	11	31%
Racine	1,009	1,005	100%	4	0%
Richland	76	64	84%	12	16%
Rock	1,430	1,313	92%	117	8%
Rusk	82	72	88%	10	12%
Saint Croix	209	197	94%	12	6%
Sauk	127	122	96%	5	4%
Sawyer	56	47	84%	9	16%
Shawano	171	139	81%	32	19%
Sheboygan	498	468	94%	30	6%
Taylor	72	70	97%	2	3%
Trempealeau	129	126	98%	3	2%
Vernon	91	87	96%	4	4%
Vilas	116	79	68%	37	32%
Walworth	294	181	62%	113	38%
Washburn	31	29	94%	2	6%
Washington	170	143	84%	27	16%
Waukesha	596	596	100%	-	0%
Waupaca	226	199	88%	27	12%
Waushara	127	119	94%	8	6%
Winnebago	875	811	93%	64	7%
Wood	481	448	93%	33	7%
STATE TOTAL	24,901	22,691	91%	2,210	9%

APPENDIX L

**Safety Assessment Results in Primary Caregiver
CPS Initial Assessments by County, 2008**

County	Total Primary Caregiver CPS Initial Assessments	Number with a Safe Safety Decision	Number with an Unsafe Safety Decision	Percent Unsafe	Number with No Safety Decision Finding
Adams	50	40	10	20%	0
Ashland	27	22	5	19%	0
Barron	189	168	21	11%	0
Bayfield	57	55	2	4%	0
Brown	733	630	103	14%	0
Buffalo	34	33	1	3%	0
Burnett	38	36	2	5%	0
Calumet	146	141	3	2%	2
Chippewa	120	92	28	23%	0
Clark	108	96	12	11%	0
Columbia	124	109	15	12%	0
Crawford	40	37	3	8%	0
Dane	1,085	987	98	9%	0
Dodge	246	211	35	14%	0
Door	63	55	8	13%	0
Douglas	182	172	10	5%	0
Dunn	93	82	11	12%	0
Eau Claire	282	259	23	8%	0
Florence	14	12	2	14%	0
Fond du Lac	457	356	77	17%	24
Forest	23	22	1	4%	0
Grant	162	149	13	8%	0
Green	208	177	31	15%	0
Green Lake	31	21	10	32%	0
Iowa	82	79	3	4%	0
Iron	18	18	-	0%	0
Jackson	105	85	20	19%	0
Jefferson	154	135	19	12%	0
Juneau	93	74	19	20%	0
Kenosha	791	694	47	6%	50
Kewaunee	7	5	2	29%	0
La Crosse	330	282	48	15%	0
Lafayette	68	48	20	29%	0
Langlade	202	171	31	15%	0
Lincoln	116	108	8	7%	0
Manitowoc	433	381	52	12%	0
Marathon	430	387	43	10%	0
Marinette	13	9	4	31%	0
Marquette	52	48	4	8%	0
Menominee	54	50	4	7%	0
Milwaukee	6,956	5,516	1,440	21%	0

APPENDIX L (Continued)

County	Total Primary Caregiver CPS Initial Assessments	Number with a Safe Safety Decision	Number with an Unsafe Safety Decision	Percent Unsafe	Number with No Safety Decision Finding
Monroe	243	225	18	7%	0
Oconto	65	58	7	11%	0
Oneida	145	124	21	14%	0
Outagamie	842	805	37	4%	0
Ozaukee	197	174	23	12%	0
Pepin	4	4	-	0%	0
Pierce	116	108	8	7%	0
Polk	202	180	22	11%	0
Portage	121	108	13	11%	0
Price	25	21	4	16%	0
Racine	1,005	810	65	6%	130
Richland	64	56	8	13%	0
Rock	1,313	1,228	85	6%	0
Rusk	72	62	10	14%	0
Saint Croix	197	193	4	2%	0
Sauk	122	103	19	16%	0
Sawyer	47	42	5	11%	0
Shawano	139	130	9	6%	0
Sheboygan	468	426	42	9%	0
Taylor	70	57	13	19%	0
Trempealeau	126	121	5	4%	0
Vernon	87	74	13	15%	0
Vilas	79	61	18	23%	0
Walworth	181	157	24	13%	0
Washburn	29	21	8	28%	0
Washington	143	130	13	9%	0
Waukesha	596	517	77	13%	2
Waupaca	199	175	24	12%	0
Waushara	119	103	16	13%	0
Winnebago	811	740	71	9%	0
Wood	448	394	54	12%	0
STATE TOTAL	22,691	19,459	3,024	13%	208

APPENDIX M

Where to Report

Listed below are the County Departments of Health and Human Services or Social Services that receive and assess child maltreatment reports. Such reports may also be made to law enforcement agencies.

Adams County Department of Health
& Social Services
108 E. North Street
P.O. Box 500
Friendship WI 53934-0500
Office Hours: 608-339-3356
After Hours: 608-339-3304

Buffalo County Department of Health
& Human Services
407 S. Second St.
P.O. Box 517
Alma WI 54610-0517
Office Hours: 608-685-4412
After Hours: 608-685-4433

Ashland County Department of
Human Services
301 Ellis Ave.
Ashland WI 54806
Office Hours: 715-682-7004
After Hours: 715-682-7023

Burnett County Department of Health
& Human Services
County Government Center
7410 County Road K #280
Siren WI 54872
Office Hours: 715-349-7600 or 715-
349-2131 After Hours: 715-349-2121

Barron County Department of Health
& Human Services
330 East LaSalle Ave., Rm. 338
Barron WI 54812
Office Hours: 715-537-5691
After Hours: 715-537-3106

Calumet County Department of
Human Services
206 Court Street
Chilton WI 53014
Office Hours: 920-849-1400
After Hours: 920-832-4646

Bayfield County Department of
Human Services
P.O. Box 100
Washburn WI 54891-0100
Office Hours: 715-373-6144
After Hours: 715-373-6120

Chippewa County Department of
Human Services
711 N. Bridge Street, Room 306
Chippewa Falls WI 54729
Office Hours: 715-726-7799
After Hours: 715-726-7830

Brown County Department of Human
Services
111 N. Jefferson Street
P.O. Box 22188
Green Bay WI 54305-2188
Office Hours: 920-448-6035
After Hours: 920-448-3200

Clark County Department of Social
Services
517 Court Street, P.O. Box 190
Neillsville WI 54456
Office Hours: 715-743-5233
After Hours: 715-743-3157

Columbia County Department of
Health & Human Services
P.O. Box 136
Portage WI 53901
Office Hours: 608-742-9227
After Hours: 608-742-7227

Crawford County Department of
Human Services
111 W. Dunn Street
Prairie du Chien WI 53821
Office Hours: 608-326-0248
After Hours: 608-326-0241

Dane County Department of Human
Services
Children, Youth & Family Intake
2322 S. Park Street
Madison WI 53713
Office Hours: 608-261-5437
After Hours: 608-255-6067

Dodge County Department of Human
Services
County Office Building
143 E. Center Street
Juneau WI 53039-1330
Office Hours: 920-386-3750
After Hours: 920-887-6713

Door County Department of Social
Services
421 Nebraska Street, P.O. Box 670
Sturgeon Bay WI 54235
Office Hours: 920-746-2300
After Hours: 920-746-2400

Douglas County Department of Health
& Human Services
1313 Belknap Street, Room 207
Superior WI 54880
Office Hours: 715-395-1304
After Hours: 715-395-1371

Dunn County Department of Human
Services
808 Main Street, P.O. Box 470
Menomonie WI 54751
Office Hours: 715-232-1116
After Hours: 715-232-5987

Eau Claire County Department of
Human Services
721 Oxford Ave., P.O. Box 840
Eau Claire WI 54702-840
Office Hours: 715-831-5700
After Hours: 715-839-4972

Florence County Department of
Human Services
501 Lake Ave., P.O. Box 170
Florence WI 54121
Office Hours: 715-528-3296
After Hours: 715-528-3346

Fond du Lac County Department of
Social Services
87 Vincent Street P.O. Box 1196
Fond du Lac WI 54936-1196
Office Hours: 920-929-3400
After Hours: 920-929-3391

Forest County Department of Social
Services
Forest County Courthouse
200 E. Madison St.
Crandon WI 54520
Office Hours: 715-478-3351
After Hours: 715-478-3331

Grant County Department of Social
Services
8820 Hwy. 35 & 61 South
P.O. Box 447
Lancaster WI 53813
Office Hours: 608-723-2136
After Hours: 608-723-2157

Green County Department of Human
Services
N3152 Highway 81, Pleasant View
Complex
Monroe WI 53566
Office Hours: 608-328-9399 or 608-
328-9393
After Hours: 608-328-9393

Green Lake County Department of Health & Human Services
500 Lake Steel Street
Green Lake WI 54941
Office Hours: 920-294-4070
After Hours: 920-294-4000

Iowa County Department of Social Services
109 W. Fountain St.
Dodgeville WI 53533
Office Hours: 608-935-9311
After Hours: 608-935-3314

Iron County Department of Human Services
Courthouse
300 Taconite Street
Hurley WI 54534
Office Hours: 715-561-3636 or 715-561-3637 or 715-561-4168
After Hours: 715-561-3800

Jackson County Department of Health and Human Services
420 Highway 54 West
P.O. Box 457
Black River Falls WI 54615
Office Hours: 715-284-4301
After Hours: 715-284-5357

Jefferson County Human Services Department
N3995 Annex Road
Jefferson WI 53549
Office/After Hours: 920-674-3105

Juneau County Department of Human Services
Courthouse Annex
220 E. LaCrosse St.
Mauston WI 53948
Office Hours: 608-847-2400
After Hours: 608-847-6161

Kenosha County Department of Human Services
8600 Sheridan Road, Suite 200
Kenosha WI 53140
Office Hours: 262-605-6582
After Hours: 262-657-7188

Kewaunee County Department of Human Services
510 Kilbourn Street
Kewaunee WI 54216
Office Hours: 920-388-3777
After Hours: 920-388-3100

LaCrosse County Human Services Department
300 North 4th Street, P.O. Box 4002
LaCrosse WI 54602
Office Hours: 608-785-6050 or 785-6054
After Hours: 608-785-9634

Lafayette County Department of Human Services
627 Main Street
Darlington WI 53530
Office Hours: 608-776-4800
After Hours: 608-776-4848

Langlade County Department of Social Services
Langlade County Health Service Center
1225 Langlade Road
Antigo WI 54409
Office Hours: 715-627-6500
After Hours: 715-623-4111

Lincoln County Department of Social Services
607 N. Sales St.
P.O. Box 547
Merrill WI 54452
Office Hours: 715-536-6200
After Hours: 715-536-6272

Manitowoc County Human Services Department
926 South 8th Street
P.O. Box 1177
Manitowoc WI 54220
Office Hours: 920-683-4230
After Hours: 920-323-2448

Marathon County Department of
Social Services
400 E. Thomas Street
Wausau WI 54403
Office Hours: 715-261-7500
After Hours: 715-261-1200

Marinette County Department of
Health & Human Services
2500 Hall Avenue, Suite B
Marinette WI 54143
Office Hours: 715-732-7700
After Hours: 715-732-7600

Marquette County Department of
Human Services
428 Underwood Avenue
P.O. Box 405
Montello WI 53949
Office Hours: 608-297-9135
After Hours: 608-297-2115

Menominee County Department of
Human Services
Social Services Building, Hwy 47
P.O. Box 280
Keshena WI 54135
Office Hours: 715-799-3861 or 715-
799-5353
After Hours: 715-799-3861

Bureau of Milwaukee Child Welfare
1555 Rivercenter Drive
Suite 220
Milwaukee WI 53212
Office Hours: 414-220-SAFE (7233)
After Hours: 414-220-SAFE (7233)

Monroe County Department of Human
Services
Community Services Center A-19
14301 County Highway B
Sparta WI 54656
Office Hours: 608-269-8630
After Hours: 911

Oconto County Department of Human
Services
501 Park Ave.
Oconto WI 54153-1612
Office Hours: 920-834-7000
After Hours: 920-834-6900

Oneida County Department of Social
Services
P.O. Box 400-Courthouse
Rhineland WI 54501
Office Hours: 715-362-5695
After Hours: 715-361-5100

Outagamie County Department of
Health and Human Services
401 South Elm Street
Appleton, WI 54911
Office Hours: 920-832-5161
After Hours: 920-832-4646

Ozaukee County Department of
Social Services
121 W. Main Street
P.O. Box 994
Port Washington WI 53074-0994
Office Hours: 262-284-8200
After Hours: 262-238-8436

Pepin County Department of Human
Services
740 7th Ave. West
Durand WI 54736
Office Hours: 715-672-8941
After Hours: 715-672-5944

Pierce County Department of Health &
Human Services
412 W. Kinne St.
P.O. Box 670
Ellsworth WI 54011
Office Hours: 715-273-6766
After Hours: 715-273-5051

Polk County Department of Human
Services
300 Polk County Plaza, Suite 110
Balsam Lake WI 54810-0219
Office Hours: 715-485-8400
After Hours: 715-485-8300

Portage County Department of Health
& Human Services
817 Whiting Avenue
Stevens Point WI 54481
Office Hours: 715-345-5350
After Hours: 715-345-5350

Price County Human Services
Department
104 South Eyder Avenue
P.O. Box 88
Phillips WI 54555
Office Hours: 715-339-2158
After Hours: 715-339-3011

Racine County Human Services
Department
1717 Taylor
Racine WI 53403
Office Hours/After Hours: 262-638-
6321

Richland County Department of
Health & Human Services
221 West Seminary
Richland Center WI 53581
Office Hours: 608-647-8821
After Hours: 608-647-2106

Rock County Human Services
Department
3530 N. County Trunk F
P.O. Box 1649
Janesville WI 53547-1649
Office Hours: 608-757-5401
After Hours: 608-757-2244

Rusk County Department of Health &
Human Services
Courthouse
311 East Miner Suite C-240
Ladysmith WI 54848
Office Hours: 715-532-2299
After Hours: 715-532-2299

Sauk County Department of Human
Services
505 Broadway, 4th Floor
P.O. Box 29
Baraboo WI 53913
Office Hours: 608-355-4200
After Hours: 1-800-533-5692

Sawyer County Department of Health
& Human Services
105 E. 4th Street, P.O. Box 730
Hayward WI 54843
Office Hours: 715-634-4806
After Hours: 715-634-4858

Shawano County Department of
Social Services
P.O. Box 434
Shawano WI 54166
Office Hours: 715-526-4700
After Hours: 715-526-3100

Sheboygan County Health & Human
Services Department
1011 North 8th Street
Sheboygan WI 53081
Office Hours: 920-459-6418
After Hours: 414-459-3111

St. Croix County Department of
Health & Human Services
1445 North 4th Street
New Richmond WI 54017
Office Hours: 715-246-6991
After Hours: 715-246-6991

Taylor County Human Services
Department
340 East College Street
Medford WI 54451
Office Hours: 715-748-3332
After Hours: 715-748-2200

Trempealeau County Department of
Social Services
Courthouse, P.O. Box 67
Whitehall WI 54773
Office Hours: 715-538-2311 ext. 290
After Hours: 715-538-4351

Vernon County Department of Human Services
 E 7419 County Home Road, P.O. Box 823
 Viroqua WI 54665
 Office Hours: 608-637-5210
 After Hours: 608-637-2124

Vilas County Department of Social Services
 330 Court Street
 Eagle River WI 54521
 Office Hours: 715-479-3668
 After Hours: 715-479-4441

Walworth County Department of Health & Human Services
 W3955 Hwy NN, Box 1005
 Elkhorn WI 53121
 Office Hours: 262-741-3200/1-800-365-1587
 After Hours: 262-741-3200/1-800-365-1587

Washburn County Department of Health & Human Services
 P.O. Box 250
 Shell Lake WI 54871
 Office Hours: 715-468-4747
 After Hours: 715-468-2721

Washington County Department of Social Services
 333 E. Washington St.
 Suite 3100
 West Bend WI 53095
 Office Hours: 262-335-4610
 After Hours: 262-335-4670

Waukesha County Department of Health & Human Services
 500 Riverview Ave.
 Waukesha WI 53188
 Office Hours: 262--548-7212/548-7666
 After Hours: 262-547-7731

Waupaca County Department of Health & Human Services
 811 Harding Street
 Waupaca WI 54981-2087
 Office Hours: 715-258-6300
 After Hours: 715-258-4466

Waushara County Department of Social Services
 P.O. Box 1230
 Wautoma WI 54982-1230
 Office Hours: 920-787-3303
 After Hours: 920-787-3321

Winnebago County Department of Human Services
 220 Washington Avenue
 P.O. Box 2925
 Oshkosh WI 54903-2925
 Office Hours: 920-236-4600
 After Hours: 920-233-7707

Wood County Department of Social Services
 (South Wood County Office)
 Courthouse, 400 Market Street
 P.O. Box 8095
 Wisconsin Rapids WI 54495-8095
 Office Hours: 715-421-8600
 After Hours: 715-421-8600