

# Program Summary ~ Fiscal Year 2008

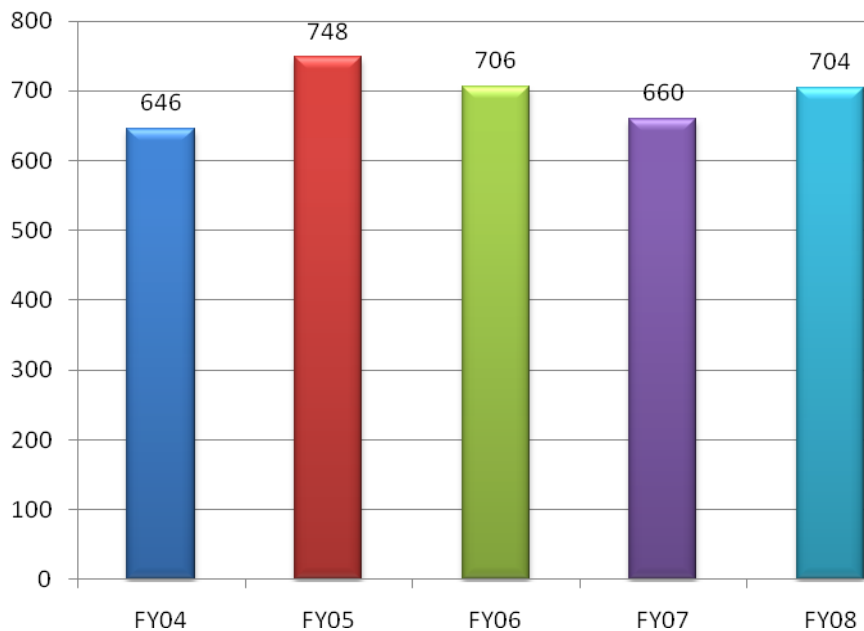


## Scholarship Activity Program to Date

*(Since August 1999)*

**6,289** Scholarships Awarded to **3,696** Scholarship Recipients  
Completed roughly **71,000** credit hours  
**987** Centers Sponsored Recipients  
Average starting wage of T.E.A.C.H. recipients: **\$10.02**  
Average hourly wage increase: **\$1.03**  
Average GPA: **3.65**  
Over **66,500** Wisconsin children have been served  
Turnover Rate of T.E.A.C.H. Scholars **11%**  
Turnover of T.E.A.C.H. Scholars during commitment year **2%**  
Wisconsin Turnover Rate of the child care workforce: **40%\***

## Awards for the last 5 years



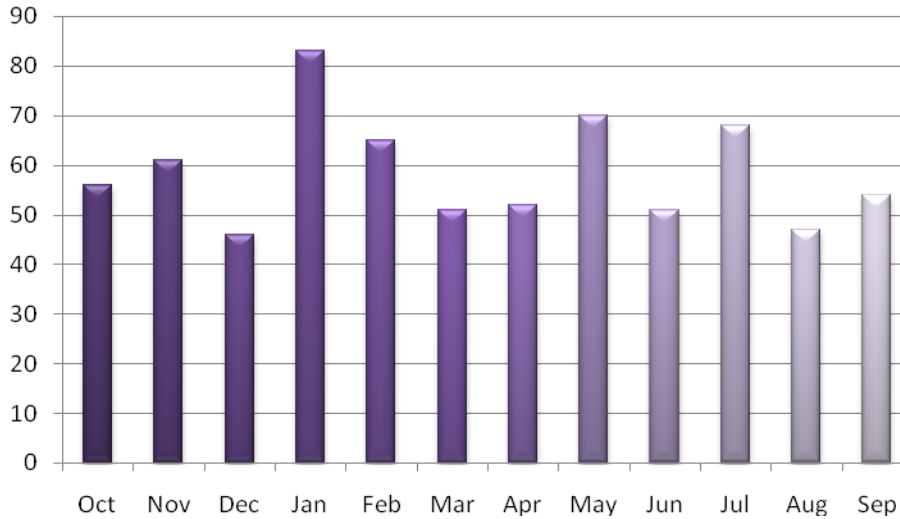
\*Source: Adams, D.B., Roach, M.A., Riley, D.A. and Edie, D. (2001). Wisconsin Child Care Research Partnership Issue Brief #2: State Policies Can Help Reduce Turnover, WI: UW-Extension.

# Scholarship Activity Fiscal Year 2008

*10/1/2007 through 9/30/2008*

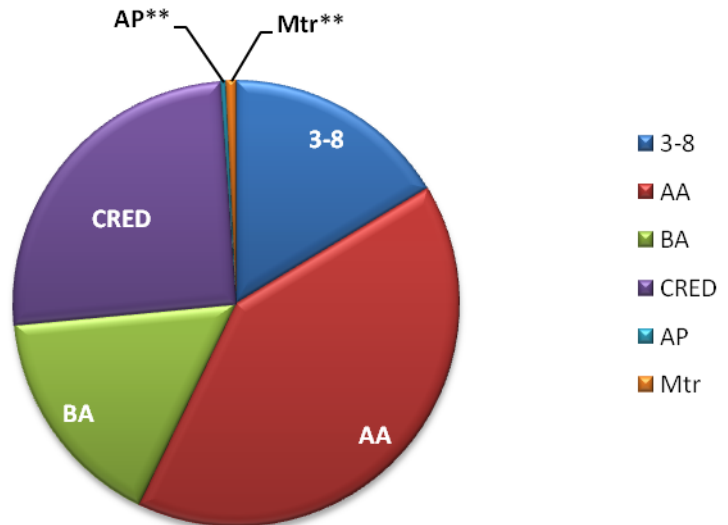
**704** Scholarships Awarded  
**307** new Scholarship Recipients  
**1147** Scholarship Recipients were served this year on **1521** scholarships  
 Completed over **13,178** credit hours\*  
 Turnover Rate is **3.7%**  
 Average hourly starting wage (10/1/2007 to 9/30/2008) is **\$10.73**  
 Average tenure in current program for new recipients is **4 years 2 months**  
 Average GPA = **3.58 for all models**

## FY08 Scholarship Awards by Month



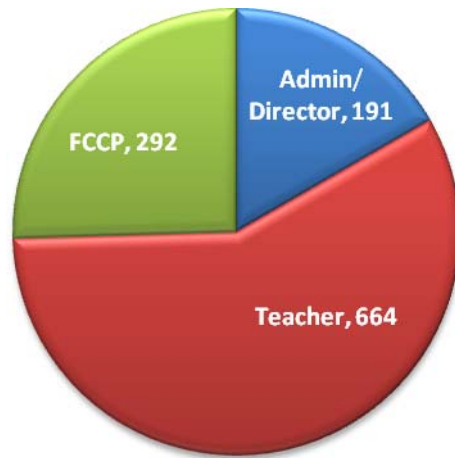
## FY08 Awards by Model Type

Model Type	Breakdown
3-8	249
AA	621
BA	248
AC***	219
IN***	10
IT***	100
PS***	57
AP	6
Mtr	11
<b>Total</b>	<b>1521</b>



\*Reflects credits taken in the following terms: Fall 2007, Spring 2008, Summer 2008 and Fall 2008  
 \*\*Apprenticeship and Mentor Models have been discontinued  
 \*\*\*AC, IT, IN, PS are all included in one scholarship for credentials

## Scholarship Recipient by Position



Position	# Recipients
Administrator /Director	191
Teacher or Assistant	664
Family Child Care Provider	292
<b>Total</b>	<b>1147</b>

## Program Type and Demographic Information Fiscal Year 2008

**397** Centers supported Scholarships with **46** new Centers

Each center sponsored an average of **3** employees.

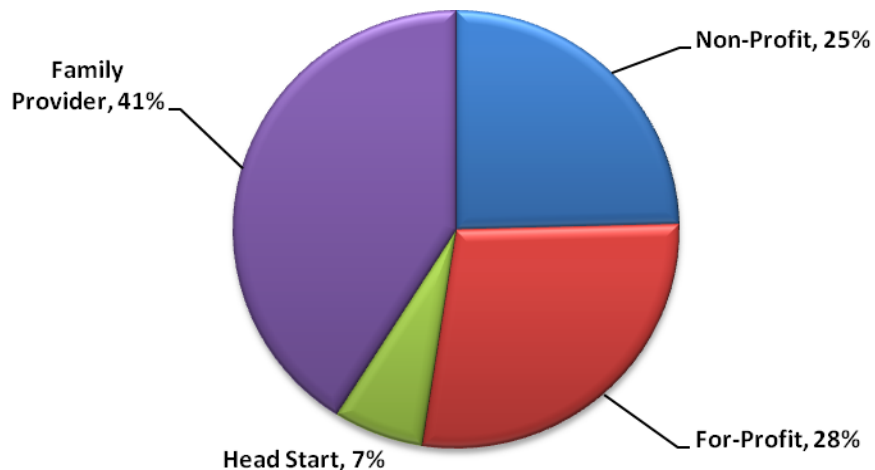
Over **35%** of the **397** group centers sponsored **3** or more employees

Currently **15** centers have **10 or more** students on scholarship this year

**275** Family Child Care Providers on Scholarship with **44** new Family Providers

Auspice	#Recipients
Non-Profit	165
For-Profit	187
Head Start	44
Family Provider	275
<b>Total</b>	<b>671</b>

### Participation by Auspice FY08



### Ethnicity of Active Scholarship Recipients

Ethnicity Reported	Scholarship Recipients	2000 Census
Multiracial	0.4%	1.0%
Asian/Pacific Islander	1.0%	2.0%
American Indian	0.3%	1.0%
Hispanic/Latino/Latina	9.3%	4.0%
Black/African American	21.8%	5.5%
White/European-American	65.4%	85.0%
Other or gave no response	1.8%	1.5%



## Table of County of Residence with Breakdown by Model

County	3-8	AA	BA	CRED	AP	Mtr-A	Total
Adams	1	7	-	1	-	-	9
Barron	-	4	-	-	-	-	4
Brown	14	23	7	12	-	1	57
Burnett	-	3	-	1	-	-	4
Calumet	1	2	-	1	-	-	4
Chippewa	1	8	5	1	-	-	15
Clark	1	-	2	-	-	-	3
Columbia	2	3	-	7	-	-	12
Crawford	-	1	-	-	-	-	1
Dane	16	28	13	30	1	-	88
Dodge	1	9	4	9	-	-	23
Door	5	5	1	10	-	-	21
Douglas	-	3	2	-	-	-	5
Dunn	3	2	-	3	-	-	8
Eau Claire	6	9	2	9	-	-	26
Fond du Lac	3	2	2	-	-	-	7
Forest	-	2	2	-	-	-	4
Grant	2	1	-	1	-	-	4
Green	-	14	6	7	-	-	27
Green Lake	-	1	-	2	-	-	3
Iowa	1	1	1	3	-	-	6
Jackson	-	1	-	2	-	-	3
Jefferson	2	5	5	5	-	-	17
Juneau	-	-	-	1	-	-	1
Kenosha	2	9	-	1	2	-	14
Kewaunee	3	1	-	3	-	-	7
La Crosse	1	1	-	4	-	-	6
Lafayette	1	-	-	2	-	-	3
Lincoln	2	3	-	-	-	-	5
Manitowoc	7	6	2	1	-	-	16
Marathon	3	10	3	6	-	-	22
Marinette	1	-	-	-	-	-	1
Marquette	-	-	-	1	-	-	1
Milwaukee	86	296	84	139	3	10	618
Monroe	-	1	1	1	-	-	3
Oconto	1	6	2	-	-	-	9
Oneida	5	-	4	1	-	-	10
Outagamie	6	24	18	14	-	-	62
Ozaukee	5	3	4	2	-	-	14
Pepin	1	-	-	-	-	-	1
Pierce	2	4	3	1	-	-	10
Polk	3	2	2	4	-	-	11
Portage	-	6	3	4	-	-	13
Price	1	-	-	-	-	-	1

Cont..

County	3-8	AA	BA	CRED	AP	Mtr-A	Total
Racine	3	12	4	16	-	-	35
Rock	5	22	6	4	-	-	37
Rusk	-	1	-	2	-	-	3
Sauk	9	7	-	8	-	-	24
Sawyer	-	-	-	1	-	-	1
Shawano	4	5	-	7	-	-	16
Sheboygan	6	10	2	3	-	-	21
St. Croix	2	2	1	1	-	-	6
Taylor	6	1	-	-	-	-	7
Trempealeau	-	1	-	1	-	-	2
Vilas	2	5	2	4	-	-	13
Walworth	3	1	-	7	-	-	11
Washburn	-	-	2	1	-	-	3
Washington	3	4	5	4	-	-	16
Waukesha	7	19	16	24	-	-	66
Waupaca	1	1	5	-	-	-	7
Waushara	1	2	5	-	-	-	8
Winnebago	4	20	22	11	-	-	57
Wood	4	2	-	3	-	-	9
<b>Total</b>	<b>249</b>	<b>621</b>	<b>248</b>	<b>386</b>	<b>6</b>	<b>11</b>	<b>1,521</b>

