



## **Program Summary September 30, 2005**

### Scholarship Activity Fiscal Year 2005

764 Scholarships Awarded  
379 new Scholarship Recipients  
966 currently active scholarships

### Scholarship Activity Program to Date

(Since August 1999)

4248 Scholarships awarded  
2803 Scholarship Recipients  
824 Centers Sponsored Recipients

Turnover Rate of T.E.A.C.H. Scholarship Recipients: 9%

Wisconsin Turnover Rate of the child care workforce: 40%

Source: Adams, D.B., Roach, M.A., Riley, D.A. and Edie, D. (2001). Wisconsin Child Care Research Partnership Issue Brief #2: State Policies Can Help Reduce Turnover, WI: UW-Extension.

Over 50,000 Wisconsin children are served by T.E.A.C.H. Scholarship recipients

Average hourly starting wage of T.E.A.C.H. Scholarship recipients: \$9.05

Average hourly wage increase: \$1.02

(Increase calculated on voluntary submission of data from 1689 recipients since August 1999)

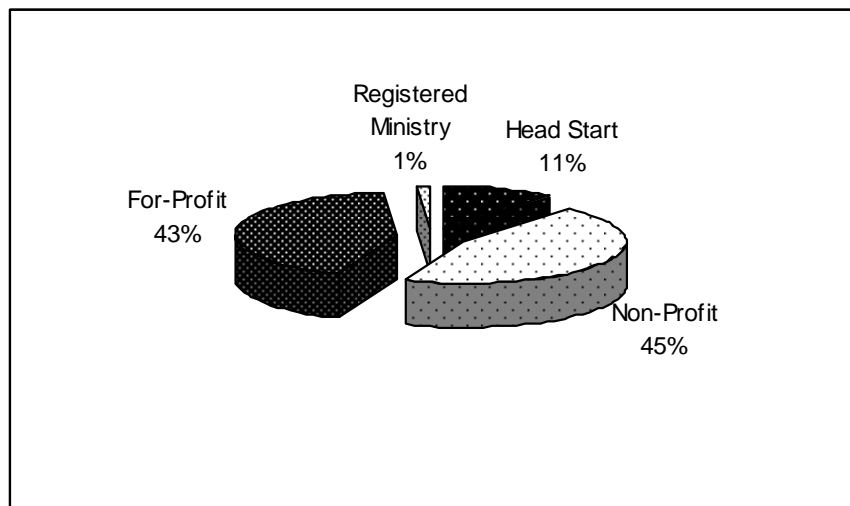
Average tenure in current center for new recipients: 4 years, 2 months

## CENTER AND DEMOGRAPHIC INFORMATION

### Participation by Auspice for Group Centers

(all active centers through 9/30/2005)

Auspice	
Non-Profit	367
For-Profit	351
Head Start	93
Registered Ministry	12
Total	824



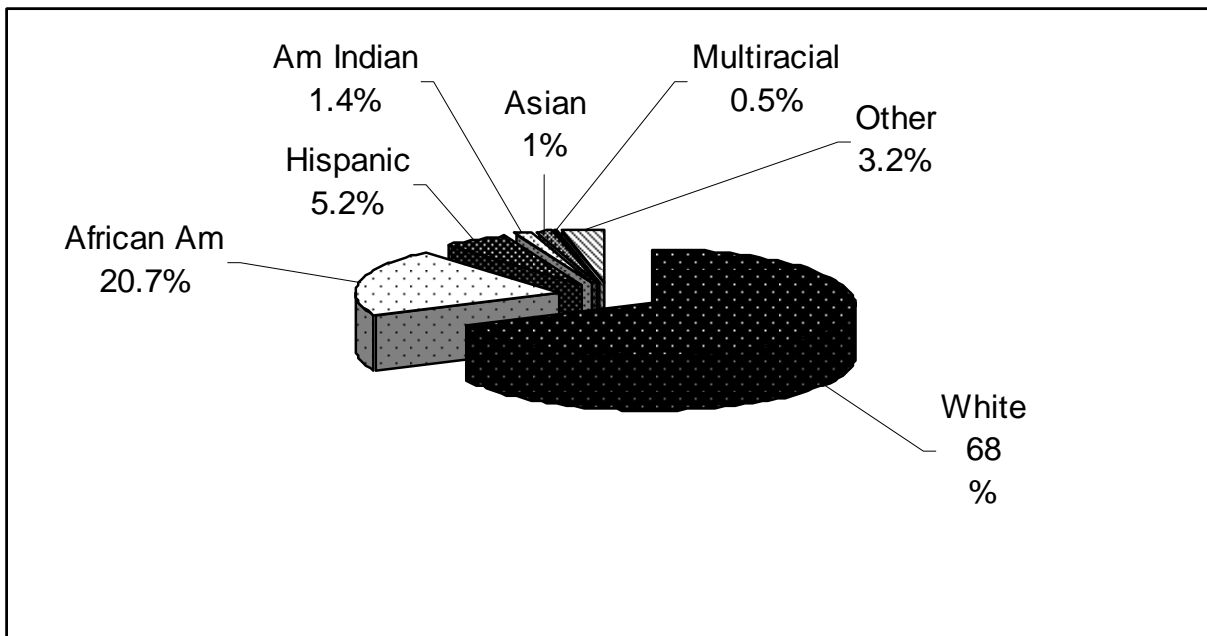
Each center sponsored an average of three employees. Over 50% of the 824 group centers sponsored three or more employees, with one center allowing 23 students to take advantage of scholarship opportunities.

## Ethnicity of Scholarship Recipients

(10/1/2004-9/30/2005)

### Scholarship Recipients Ethnicity:

0.5%	Identify themselves as Multiracial
1.0%	Identify themselves as Asian/Pacific Islander
1.4%	Identify themselves as American Indian
5.2%	Identify themselves as Hispanic/Latino/Latina
20.7%	Identify themselves as Black/African American
68.0%	Identify themselves as White/European-American
3.2%	Identify themselves as Other or gave no response



### State of Wisconsin Ethnicity (from the 2000 census)

1%	Identify themselves as Multiracial
2%	Identify themselves as Asian/Pacific Islander
1%	Identify themselves as American Indian
4%	Identify themselves as Hispanic/Latino/Latina
5.5%	Identify themselves as Black/African American
85%	Identify themselves as White/European-American
1.5%	Identify themselves as Other or gave no response



## Current Active Scholarship Contracts Awarded by County

County	6-8	AA	AC	AP	BA	IT	MTR	Total
Adams		2	1					3
Ashland								0
Barron								0
Bayfield		1						1
Brown	3	19	3			2		27
Buffalo		1						1
Burnett		1						1
Calumet		2						2
Chippewa	3	1	2					6
Clark		2						2
Columbia	2		3			1		6
Crawford								0
Dane	10	11	22	8	4	9		64
Dodge	1	10	8		2			21
Door		2	3			4		9
Douglas					4			4
Dunn		2			1			3
Eau Claire	2	3	1		3	2		11
Florence								0
Fond Du Lac		4	2		2			8
Forest	1							1
Grant	2	1						3
Green	2	8	2		2			14
Green Lake	1	2						3
Iowa		2	3					5
Iron								0
Jackson								0
Jefferson		1				1		2
Juneau								0
Kenosha		4	4		1	1		10
Kewaunee			1					1
La Crosse		1			1			2
Lafayette								0
Langlade						1		1
Lincoln	1	2	1					4
Manitowoc	3	9	1		1			14

County	6-8	AA	AC	AP	BA	IT	MTR	Total
Marathon		10	5		1	2		18
Marinette			1					1
Marquette						1		1
Memoninee								0
Milwaukee	40	216	66	6	44	72	32	476
Monroe								0
Oconto		5	1					6
Oneida	1	5	1		6			13
Outagamie		13	5		5	6		29
Ozaukee		3	2		3	1		9
Pepin								0
Pierce		1						1
Polk		2				2		4
Portage		3	5					8
Price								0
Racine	2	9	5	2	3	2		23
Richland			3					3
Rock	1	18	2		2	1		24
Rusk								0
Sauk	1	5						6
Sawyer		1						1
Shawano	1	6				2		9
Sheboygan	3	8	1			1		13
St. Croix		1						1
Taylor	1				1			2
Trempealeau						1		1
Vernon	1							1
Vilas	2				1			3
Walworth	1	3	1		1			6
Washburn								0
Washington	1	7	5		4	1		18
Waukesha	1	8	8		6	4		27
Waupaca	1	5						6
Waushara		3	1		1			5
Winnebago	3	6	2			2	1	14
Wood	2	4	1			1		8

93    433    172    16    99    120    33    966

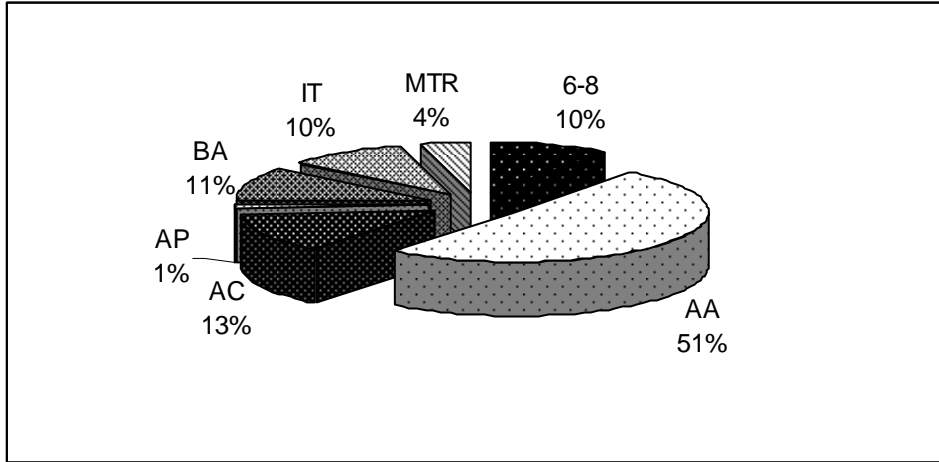
# SCHOLARSHIP REVIEW

(10/1/2004-9/30/2005)

764 Scholarships Awarded  
379 new Scholarship Recipients  
966 currently active scholarships

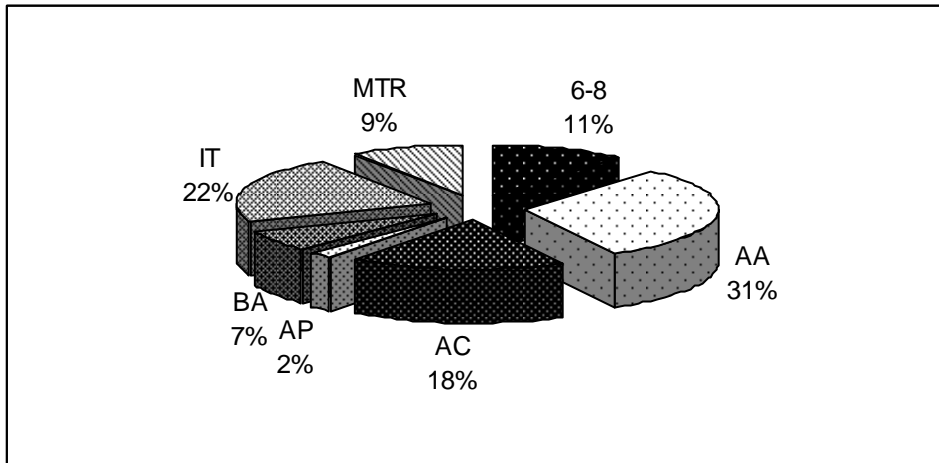
### FY05 Distribution of Scholarships Awarded by Model

(10/1/2004-9/30/2005)



### Program to date Distribution of Scholarships Awarded by Model

(10/1/2004-9/30/2005)



### Model Breakdown by Program Type

(10/1/2004-9/30/2005)

3

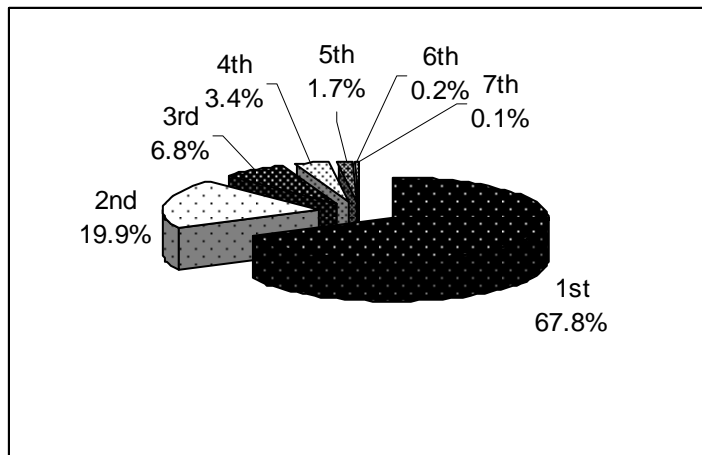
Model	Recipients
6-8 Credit Model	76
Associate Degree	387
Bachelor's Degree	84
Infant Toddler Credential	77
Administrator's Credential	98
**Apprenticeship	10
Mentor	32
Total	764

\*\*Please note, the Apprenticeship model is only available to center based students.

Of the 2803 scholarship recipients, 902 (32%) have gone on to complete 2 or more contracts.

1st Contract	1901
2nd Contract	559
3rd Contract	190
4th Contract	96
5th Contract	48
6th Contract	7
7th Contract	2

2803



**College information  
Attendance FY05**

*(Terms Fall 2004, Spring 2005 and Summer 2005)*

	<b>Participating Institutions</b>
UW Campuses	15
Technical Colleges	16
Private Colleges/Universities	8
Agencies*	2
<b>Total</b>	<b>41</b>

\*contracted with local technical college to provide coursework

**Credit hours taken by Institution**

*(Terms Fall 2004, Spring 2005 and Summer 2005)*

Institution	Credits
Alverno College	100
Blackhawk Tech College	350
Cardinal Stritch University	32
Carroll College	97
Chippewa Valley Tech College	25
Concordia University	25
Edgewood College	65
Fox Valley Tech College	429
Gateway Tech College	180
Lakeland College	318
Lakeshore Tech College	233
Madison Area Tech College	286
Marian College of Fond du Lac	55
MATC/Community Coord Child Care I	207
MEC North	3
Mid-State Tech College	149
Milwaukee Area Tech College	2751
Moraine Park Tech College	508
Nicolet Area Tech College	163
Northcentral Tech College	143
Northeast Wisconsin Tech College	963
Northland College	15

Institution	Credits
Silver Lake College	50
Southwest Wisconsin Tech College	38
UW - Platteville	159
UW - Eau Claire	6
UW - Fond du Lac	9
UW - Green Bay	84
UW - La Crosse	42
UW - Madison	76
UW - Manitowoc	24
UW - Marathon County	16
UW - Oshkosh	28
UW - Rock County	21
UW - Stevens Point	13
UW - Stout	48
UW - Superior	87.5
UW - Whitewater	101
UW - Milwaukee	1245
Viterbo University	6
Waukesha County Tech College	266
Western Wisconsin Tech College	20
WI Indianhead Tech College	27
<b>Total</b>	<b>7097</b>

**Total Credit Hours Taken by Scholarship Recipients: 43,321**  
*(Terms Fall 2004, Spring 2005 and Summer 2005)*

**Historical Breakdown by Semester**

