

Building the Future By Investing Early



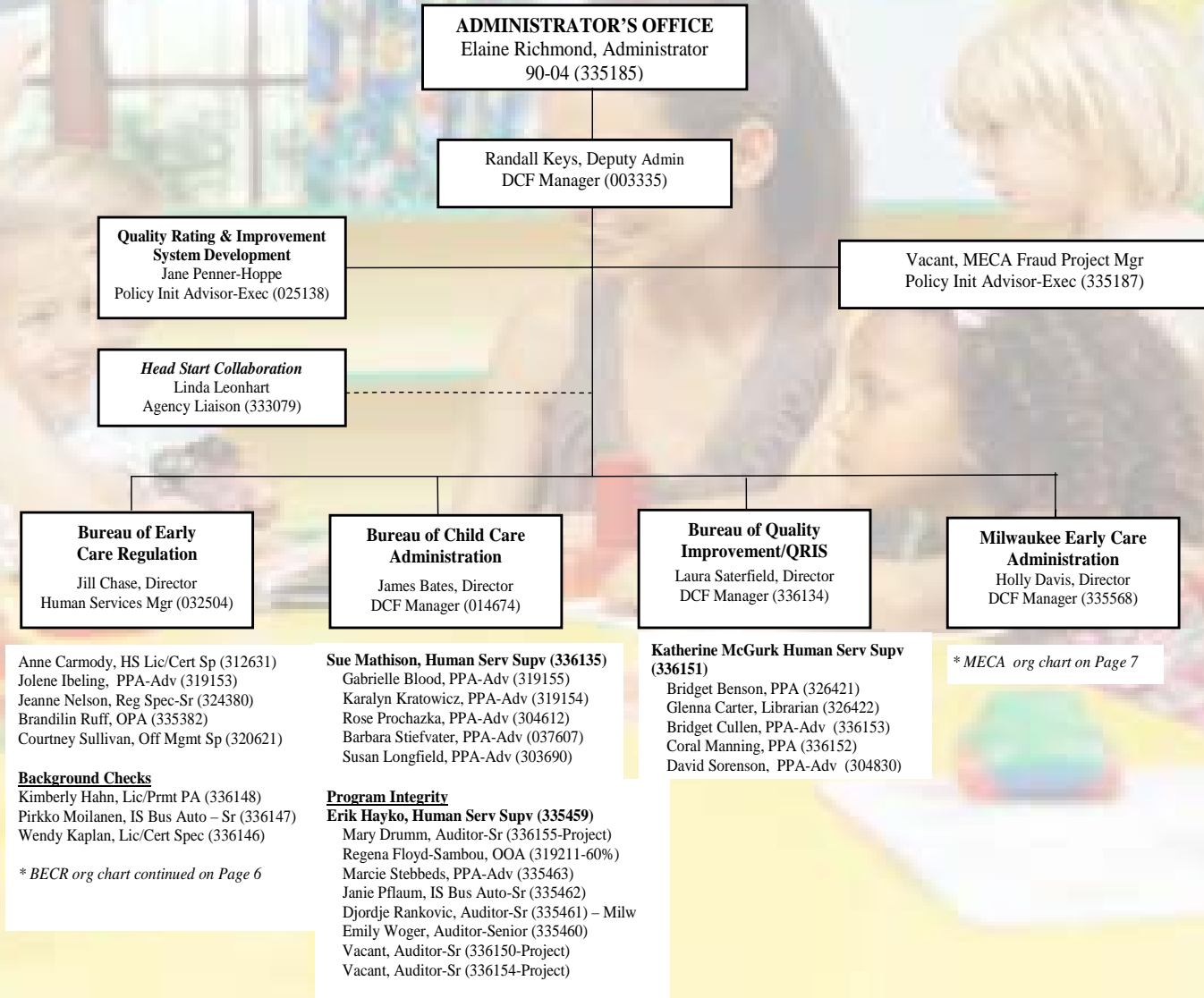
youngstar 

Wisconsin's Child Care Rating Program

Start early. Start smart. Start here.

youngstar 
Wisconsin's Child Care Rating Program

Start in | Start a | Start e a.



Certification in Wisconsin

- One of two forms of child care regulation in Wisconsin
- 2,281 Programs in Wisconsin's 72 Counties and 8 Tribes
- Key Roles
 - Navigate Wisconsin Shares Program
 - Provide technical assistance, consulting and monitoring about the Certification Process



Wisconsin's Child Care Rating Program

Start early. Start smart. Start here.

Development of YoungStar

- Passed by a unanimous vote on June 23, 2010
- Proposal is grounded in 2005 Quality Cares for Quality Kids proposal
- Second phase and Five Year Plan Approved in December 2010 by JFC

YoungStar will...

- Support child care providers in WI
- Help parents make child care choices
- Align Shares payments with quality
- Prevent fraud

Wisconsin Is Building on Strength

Training & Education

Quality Improvement

T.E.A.C.H. Scholarships

REWARD Stipends

Supporting Families Together Association

Child Care Food Program

Courses & Credentials

Child Care Information Center

The Registry

Strengthening Families

DHS Physical Activity Initiative

Center for the Social and Emotional Foundations

Wisconsin Model Early Learning Standards

Regulation: Licensing & Certification

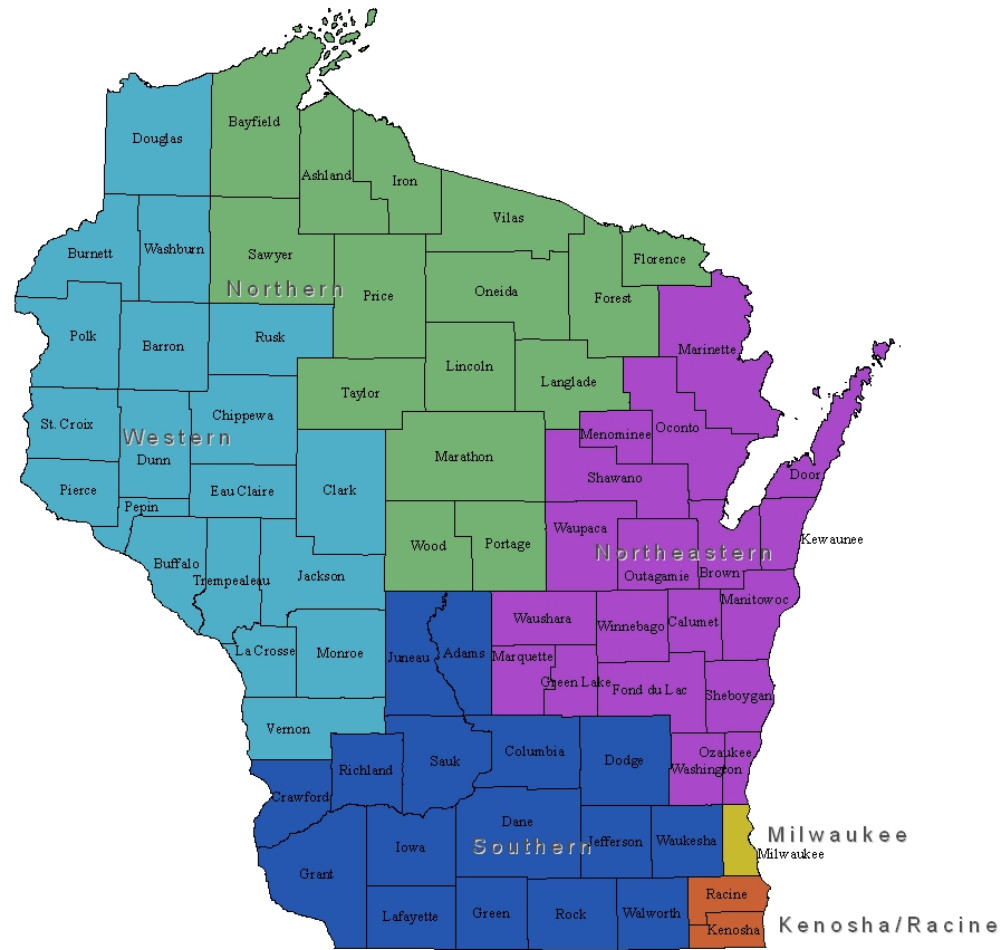
Regional Service Delivery

- DCF has selected six regional office to administer YoungStar
- YoungStar consortium made up of SFTA, WECA and the Celebrate Children Foundation

Regional entities will be responsible for:

- Collection and processing of YoungStar applications and agreements
- Child care assessments
- Administration of quality microgrants
- Training and technical assistance
- Assist parents to find child care
- Working with DCF and other key partners for YoungStar
- *More detailed information contained in YoungStar Regional Entity Responsibility document forwarded.*

Service Delivery Areas



Future WI Shares Reimbursement



Regulatory Compliance Licensed Programs

Licensed providers will be out of regulatory compliance upon receipt of notice from DCF:

- 1) been revoked
- 2) been denied a license
- 3) has had their license suspended.

Licensed providers

- For revocations, denials and suspensions – program remains out of compliance until regulatory enforcement action is resolved.
- Future participation in the Wisconsin Shares program depends on conditions articulated in the final ruling.
- If program continues to operate during this process, they will have access to YoungStar training and technical assistance.
- If and when provider is deemed to be in regulatory compliance, their prior rating will be restored.

Licensed Providers

- For programs that are found to be out of regulatory compliance, the provider's rating will be changed to a one star.
- All three regulatory actions, the revocation, denial and suspension, have an associated appeal right, as described in Ch. 227, Wis. Stats.



Start early. Start smart. Start here.



Start early. Start smart. Start here.

Regulatory Compliance - Certification

- Programs will be rated one star if they are found to be out of compliance, which is defined as:
 - Program has been revoked
 - Program has been denied recertification

Certified Programs

- If the program continues to operate during the regulatory enforcement proceedings, the provider will continue to have access to YoungStar training and technical assistance.
- If and when a provider is deemed to be in regulatory compliance, the provider's prior rating will be restored.



Start early. Start smart. Start here.



Start early. Start smart. Start here.

Regulatory Compliance - Shares Suspension

- Providers who have been suspended from the Wisconsin Shares program will be rated as one star.
- They will remain at one star until the term of the YoungStar/Shares Participation contract expires. At that time, the provider will be removed from YoungStar.
- If program continues to operate after their suspension, they will continue to have access to YoungStar training and technical assistance.
- If the provider is subsequently reinstated, the providers prior rating will be restored.

Out of State Providers

- Correspondence will be sent in April to providers who are receiving Wisconsin Shares
- They must complete the Wisconsin Shares contract in order to continue to receive Shares payments after July 1, 2011.
- Out of State Providers should send their Wisconsin Shares application directly to DCF.
- They will be entered into the system by DCF.
- Their program will not be visible within the YoungStar search engines.
- Provider will be paid at a 2 Star level.

How Programs Accumulate Points Child Care Quality Indicators

- Educational Qualifications
- Learning Environment and Curriculum
- Professional Business Practices
- Health and Well Being of Children

Quality Indicator Point Totals

	<i>Possible Points</i>	
<i>Category for Earning Points</i>	<i>Family</i>	<i>Group</i>
<i>Education Qualifications - Family Provider</i>	0-14	N/A
<i>Education - Group Teachers</i>	N/A	0-9
<i>Education of Group Director</i>	N/A	0-6
<i>Learning Environment and Curriculum</i>	0-14	0-13
<i>Professional Practices (business practices, staff benefits, parent involvement)</i>	0-7	0-7
<i>Health and Wellness</i>	0-5	0-5
Total	0-40 points	0-40 points

Accreditation

- Alternate pathway to 4 or 5 stars
- Nationally recognized
- Group Centers: NAEYC, NAC, City of Madison, Head Start Performance Standards
- Family Child Care: NAFCC, City of Madison
- NAFCC or City of Madison Accreditation plus Associate Degree verified by Registry would receive 5 stars

Requirements for 2 Star Programs YoungStar

- Program must be in regulatory compliance.
- Program must have signed a Wisconsin Shares contract.
- Program must fill in a completed YoungStar application to send in their regional entity
- Programs may choose an automated 2 Star Rating on their application which does not require an on-site visit
- There are minimum requirements in each component of YoungStar for 3, 4 and 5 Star Programs

Quality Indicator Category		Minimum Points Required		
		Star 3	Star 4	Star 5
Education	Teacher	3 Infant/Toddler or Inclusion Credential or 18 related credits	4 Administrator Credential or Preschool Credential or 24 related credits	12 Associate Degree
	Director			
Learning Environment and Curriculum		1 Self Assessment Quality Improvement Plan	4 Requirements for Stars 2 and 3 FCCERS Average score of 5, no subscale less than 3 (3)	5 Requirements for 2, 3 & 4 FCCERS average score of 5, no subscale less than 4.
Business and Professional Practices: <ul style="list-style-type: none"> •Business Practices •Professional development and staff benefits (choice points) •Parent involvement 		1 Signed Wisconsin Shares agreement Ongoing yearly budget planning and assessment of program financial status	2 Requirements for Star 2 & 3 Parent Handbook	3 Requirements for 2, 3 & 4 Program has written policies that reduce risk
Child Health and Well Being		1 Nutritious meals are served daily or CAFCP participation	1	1
Required Additional Individual Program Choice Points		4 or more	6 or more	12 or more
Total		11-22	23-32	33-40

Participating in YoungStar

- **Programs who receive Wisconsin Shares will be required to participate**
- **YoungStar contract with program will be required to participate**
- **All programs must agree to timely and accurate reporting of Wisconsin Shares to participate**
- **For programs not in Wisconsin Shares, participation is voluntary**

Types of Rating

- Automated Rating – 2 Star
 - Requires Completed Application Submission
 - Wisconsin Shares Contract
- Technical Rating – 2 and 3 Star
 - Provider indicates they desire technical assistance
 - Education verified by the Registry
 - Food Program and Business practices verified
 - Additional points verified
 - Program receives assistance with Quality Improvement Plan
- Formal Rating – 4 and 5 Star
 - Must meet educational requirements of 4 star program and minimum requirements for 4 Star
 - Formal rating observation conducted
 - Technical assistance is available

How are programs evaluated?

- Point detail document spells out generally how programs are to be evaluated and who is responsible for documentation.
- On DCF's YoungStar "for providers" page – the [Evaluation Criteria for Family Providers](#) is an on-line tool that specifically details how a program is evaluated to determine if criteria are met.
- A companion tool is available for group child care centers

How will parents get information?

- Individual child care provider ratings will be posted on-line on DCF's YoungStar website.
- Information on quality child care will be provided by YoungStar regional offices and Child Care Resource and Referral agencies in their community
- www.dcf.wisconsin.gov

Anticipated Timeline for Implementation

- Regional start up activities – November, 2010
- Services in regional areas – January 1, 2011
- Applications due to YoungStar Regional Organizations – June 1, 2011
- Tie to reimbursement – July 1, 2011

Process for programs

- Application to participate
- Observation raters and technical consultants housed in regional entities.
- Observation rating required for 3 or more stars
- Automated process for calculating program score

Additional Resources

- More detailed information is available on-line – www.dcf.wisconsin.gov
- Updates will be ongoing to website as implementation occurs
- Questions can be directed to the Wisconsin Child Care Information Center – ccic@dpi.wi.gov
- 608-224-5388 or 1-800-362-7353

Education Resources

• General Resources:

- DCF YoungStar home page: <http://dcf.wi.gov/youngstar/>
- DCF Frequently Asked Questions: <http://dcf.wi.gov/youngstar/pdf/faq.pdf>
- WECA and DCF Webinar - [wisconsinearlychildhood.org](http://www.wisconsinearlychildhood.org)

• Staff Qualifications Resources

- The Registry: <http://www.the-registry.org/>
- Credential information: <http://www.t-net.org/Credentials/>
- T.E.A.C.H. Early Childhood® Wisconsin information: <http://wisconsinearlychildhood.org/teach>
- Map of Wisconsin Higher Education: http://wisconsinearlychildhood.org/teach/index.php?category_id=2618
- A Matter of Degrees: http://www.preknow.org/documents/teacherquality_march2010.pdf
- Credit for Prior Learning Pathway Brief: http://www.wecanaeyc.org/uploads/media/First_Pathways_Brief.pdf
- CARE courses (CDA info): <http://www.carecourses.com/StatePages/Wisconsin.htm>
- ECE Higher Ed online courses information: http://dpi.state.wi.us/ccic/edu_homestudy.html

Learning Environment and Curriculum Resources

Self-Assessment/ Quality Improvement Plan creation:

<http://www.collaboratingpartners.com/4Kprogram-evaluation.htm>

Grow in Quality, self-assessment tool:

<http://dcf.wisconsin.gov/childcare/growingquality/default.htm>

WMELS information: <http://www.collaboratingpartners.com/EarlyLS.htm>

WMELS training dates: <http://www.collaboratingpartners.com/training.htm>

Child outcomes/child portfolios information:

http://www.collaboratingpartners.com/screen_assess.htm

Free lending library, WI Child Care Information Center (CCIC): 1-800-362-7353 or

www.ccic.wi.gov

GROUP CENTER specific resources

Early Childhood Environment Rating Scale (ECERS) and Infant/Toddler

Environment Rating Scale (ITERS) information: <http://www.fpg.unc.edu/~ECERS/>

PAS information: <http://cecl.nl.edu/evaluation/pas.htm>

FAMILY CHILD CARE PROGRAM specific resources

Self-Assessment plan creation: <http://cecl.nl.edu/evaluation/bas.htm>

Family Child Care Environment Rating Scale (FCCERS) information:

http://www.fpg.unc.edu/~ECERS/fccers_frame.html

BAS information: <http://cecl.nl.edu/evaluation/bas.htm>

Health & Wellness Resources

Child and Adult Care Food program general info:

<http://dpi.wi.gov/fns/cacfp1.html>

Child and Adult Food Care program regional contacts:

<http://dpi.wi.gov/fns/cacfpmap.html>

ECERS information: <http://www.fpg.unc.edu/~ECERS/>

FCCERS information: <http://www.fpg.unc.edu/~ECERS/>

Inclusion Credential information: <http://www.t-net.org/Credentials/Inclusion/>

CSEFEL information: <http://www.vanderbilt.edu/csefel/>

Strengthening families info:

http://www.strengtheningfamilies.net/index.php/protective_factors

,

<http://wctf.state.wi.us/home/CSSPart/Strengthening%20Families%20WI>

Serving young children with disabilities:

<http://www.collaboratingpartners.com/EarlyCSE.htm>

Professional Practices Resources

Model Work Standards Information:

http://www.ccw.org/email/index.php?option=com_content&task=view&id=17&Itemid=76

T.E.A.C.H. Early Childhood® Wisconsin information:

<http://wisconsinearlychildhood.org/teach>

Professional associations:

<http://wisconsinearlychildhood.org/members> ,

<http://www.wccaa.org/>

<http://www.wisconsinfamilychildcare.org/> ,

<http://www.whsaonline.org/> , etc.

PAS information: <http://cecl.ni.edu/evaluation/pas.htm>

BAS information: <http://cecl.ni.edu/evaluation/bas.htm>

THINGS TO KNOW

- Application Process
- Find your YoungStar Regional Office at <http://dcf.wisconsin.gov/youngstar/map/default.htm>
- June 1st application deadline for sending to YoungStar regions in time for July 1 timing of subsidy payments.
- Website <http://dcf.wisconsin.gov/youngstar/default.htm>
- CCIC for information – bridget.benson@wisconsin.gov

Website And Automation Overview

- Public website
- Certifier access to website for YoungStar information
- Web Access
 - <http://dcf.wisconsin.gov/childcare/youngstar/default.htm>
 - David Sorenson, DCF

Certification Actions

Regulatory Action	CCPC action	Effects on CSAW	Effects on YoungStar
Provider revoked	Certifier changes the provider's status to 'revoked'	Authorizations will end on Saturday following the date revocation was entered into CCPC	Provider will no longer be listed on the YS site.
Provider appeals	Certifier changes the status to 'revocation appealed-continue auths/payments', Send an email to: david.sorenson@wisconsin.gov to inform him about the appeal.	Subsidy unit may re-create the authorizations (this will change once tiered reimbursement is in place)	DCF will mark the provider being out of regulatory compliance in YoungStar. Provider will be listed as a 1-star program.

Certification Actions

Regulatory Action	CCPC action	Effects on CSAW	Effects on YoungStar
Appeal results – revocation decision overturned	Certifier changes the provider’s status in CCPC to “approved”.	No effect in CSAW currently. Auths/payments can continue.	DCF will mark the provider being back in compliance in YS. Provider will be listed at the star level that was there prior to revocation.
	Send an email to DCF to inform staff that the provider now is in compliance.		
Appeal results – revocation decision upheld	Certifier changes the provider’s status back to ‘revocation’.	Authorizations will end in CSAW effective Saturday after the decision date	Provider will no longer be listed in YoungStar



youngstar 

Wisconsin's Child Care Rating Program

Start early. Start smart. Start here.