

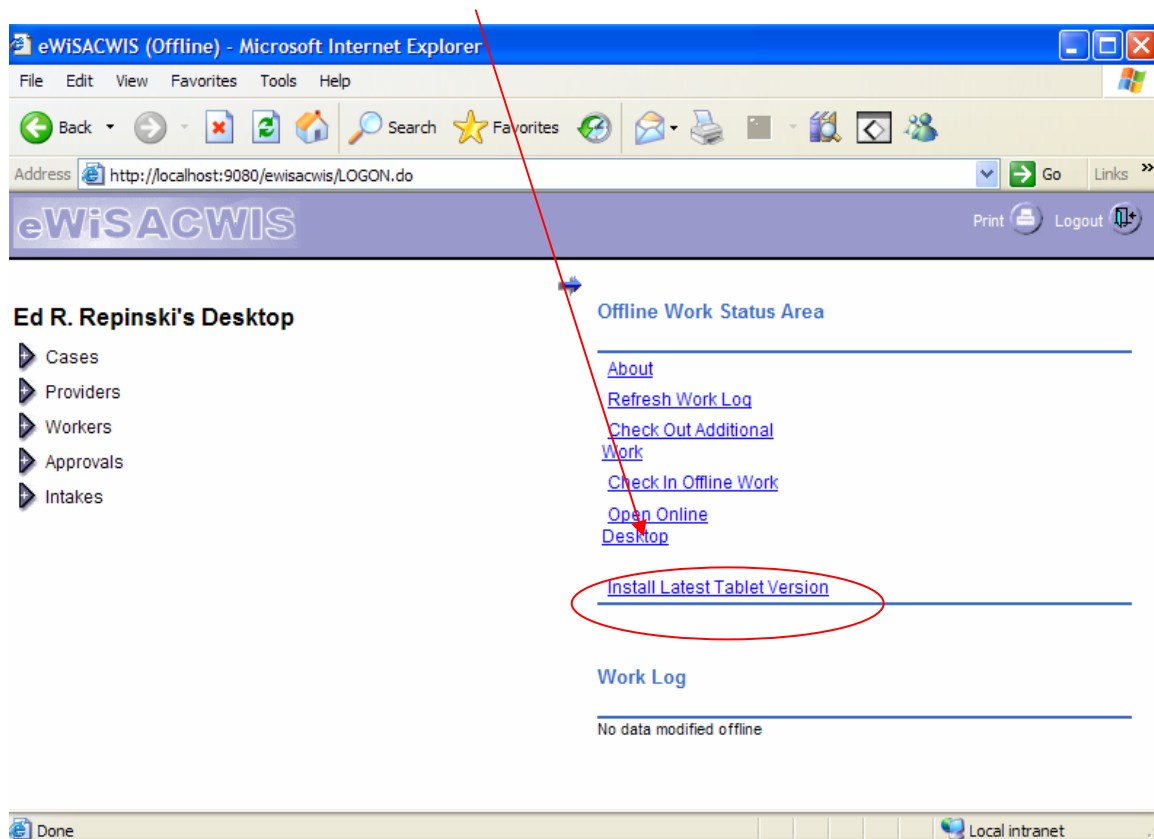
Upgrading eWiSACWIS Anywhere Software

The eWiSACWIS Anywhere Tablet/Laptop software must be upgraded with each new release of eWiSACWIS. eWiSACWIS is upgraded on a quarterly basis. This upgrade will occur automatically through a version checking mechanism that becomes activated when a user logs into the eWiSACWIS Anywhere (offline) application. If a version discrepancy is detected, the user will be prompted to download and install the available upgrade through a series of automated directions. The upgrade must occur to ensure eWiSACWIS Anywhere (offline) communicates correctly with eWiSACWIS (online).

Based on security settings and other environment variables, some technical support personnel may still have the need to manually upgrade eWiSACWIS Anywhere.

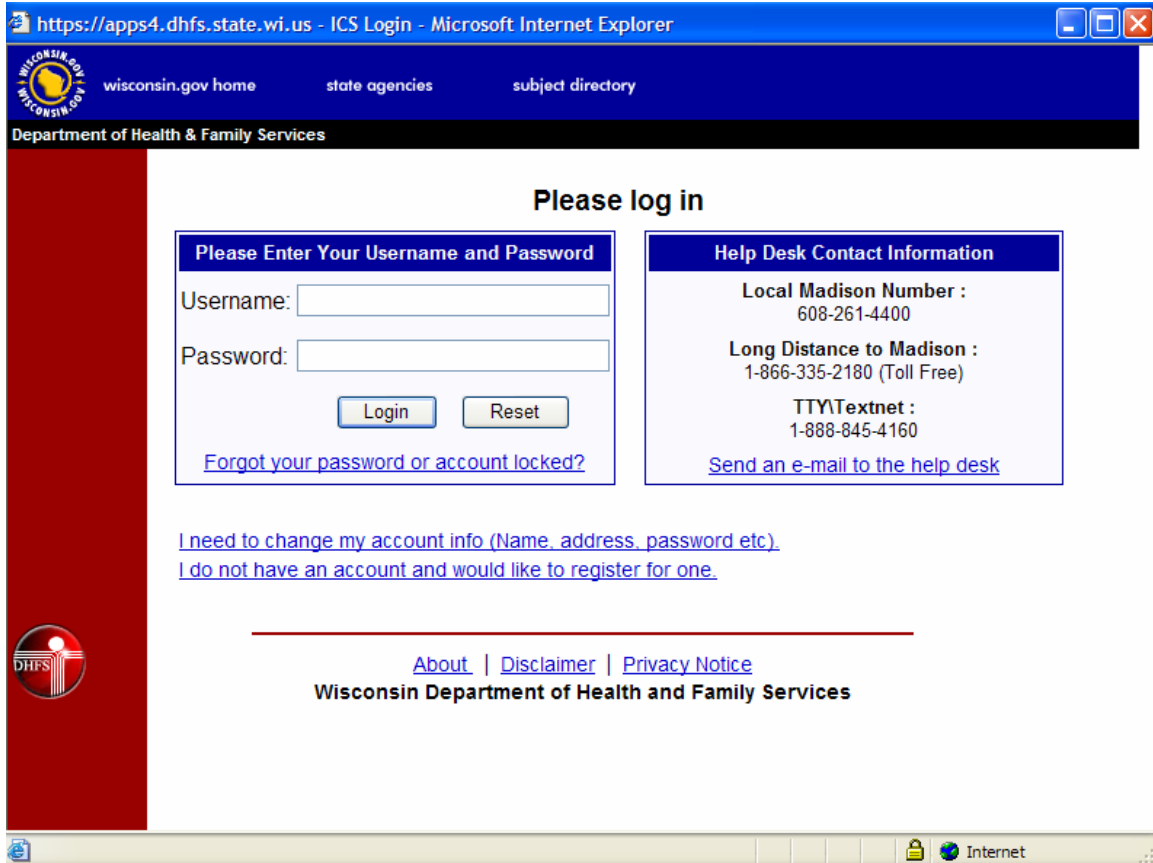
The steps to manually upgrade the eWiSACWIS Anywhere are listed below:

1. Login to eWiSACWIS Anywhere (ensure you have a network cable connected) and click on the “Install Latest Tablet Version” hyperlink as pictured below.

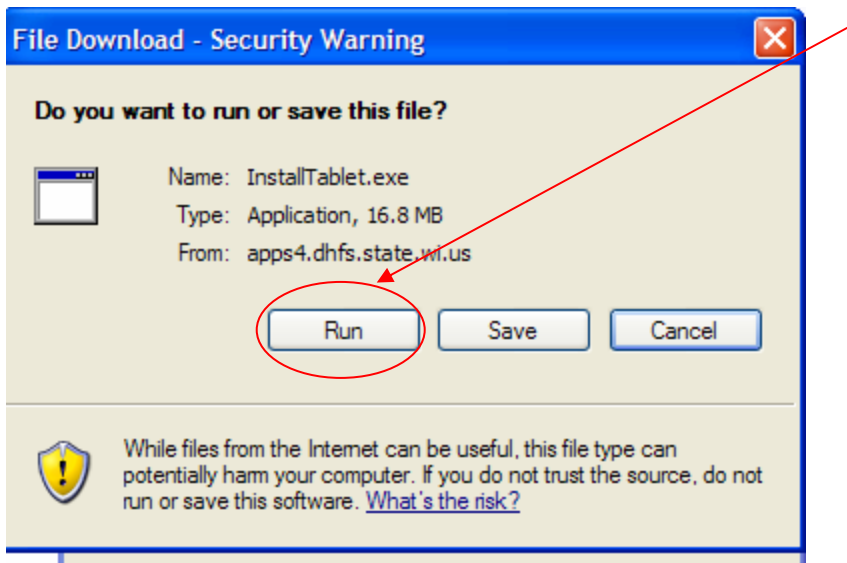


Upgrading eWiSACWIS Anywhere Software

2. A Login page will appear. Login using your eWiSACWIS user id and password.

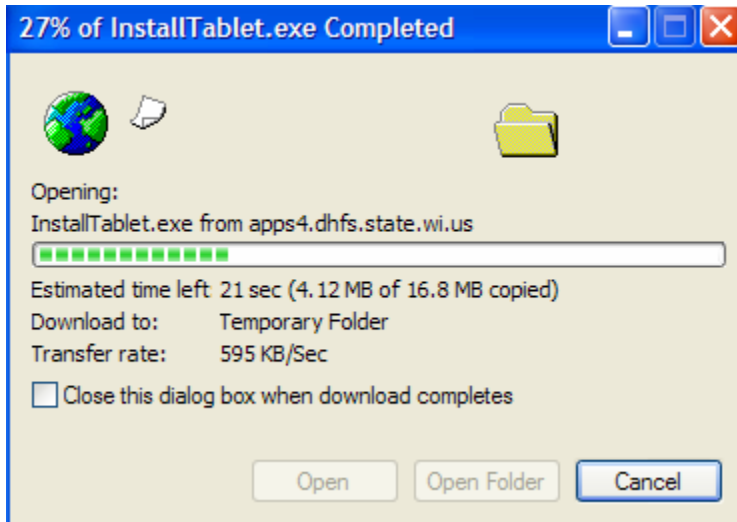


3. The following dialog box appears. Click Run to download and run the update.

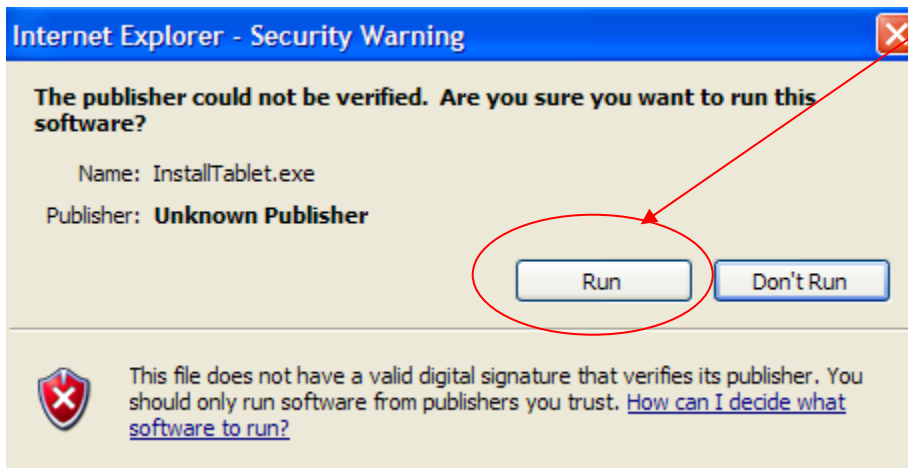


Upgrading eWiSACWIS Anywhere Software

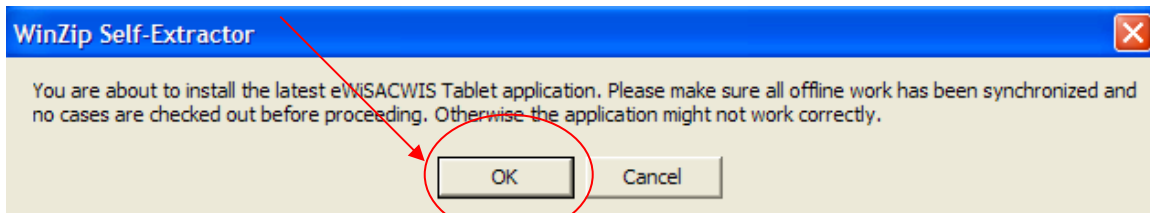
A dialog box shows the progress of the download.



4. Once the download is complete the following dialog box appears. Click Run

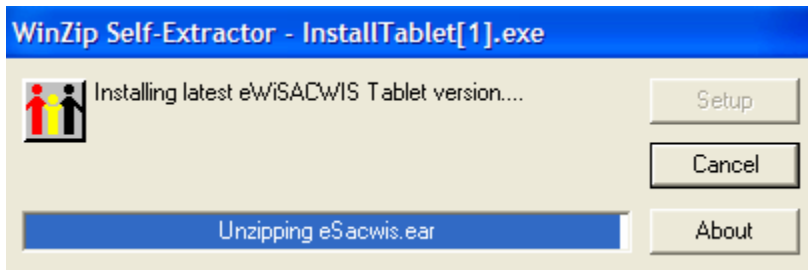


5. The following dialog box appears. Click OK

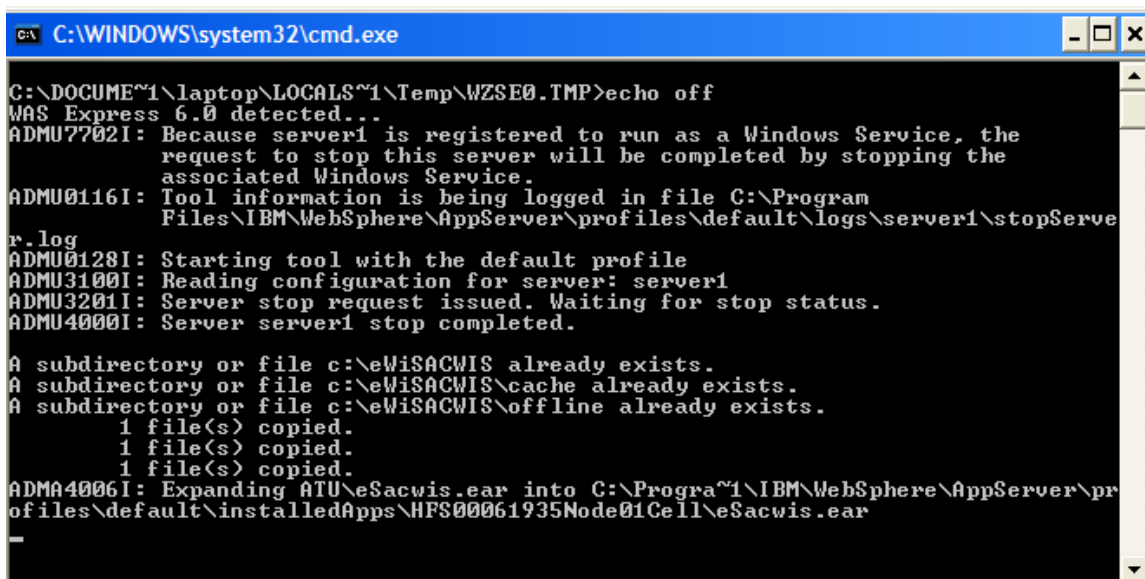


Upgrading eWiSACWIS Anywhere Software

The following dialog box appears and indicates the install process has begun.



The following window will appear....**DO NOT** close this window.

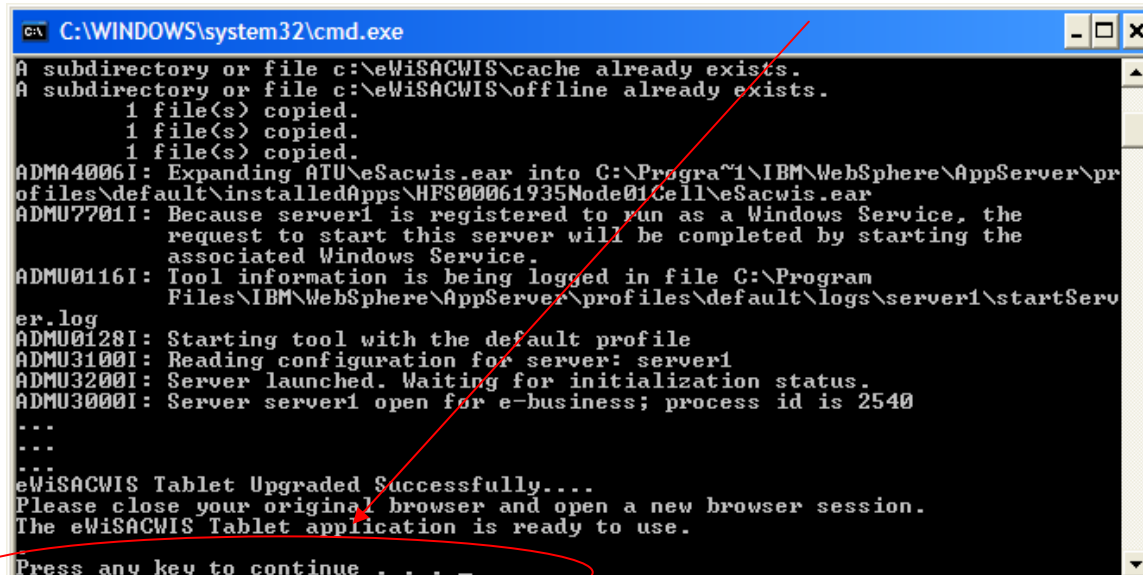
A screenshot of a Windows command prompt window titled "C:\WINDOWS\system32\cmd.exe". The window shows the output of a command to run a script. The text in the window is as follows:

```
C:\DOCUME~1\laptop\LOCALS~1\Temp\WZSE0.TMP>echo off
WAS Express 6.0 detected...
ADMU7702I: Because server1 is registered to run as a Windows Service, the
request to stop this server will be completed by stopping the
associated Windows Service.
ADMU0116I: Tool information is being logged in file C:\Program
Files\IBM\WebSphere\AppServer\profiles\default\logs\server1\stopServe
r.log
ADMU0128I: Starting tool with the default profile
ADMU3100I: Reading configuration for server: server1
ADMU3201I: Server stop request issued. Waiting for stop status.
ADMU4000I: Server server1 stop completed.

A subdirectory or file c:\eWiSACWIS already exists.
A subdirectory or file c:\eWiSACWIS\cache already exists.
A subdirectory or file c:\eWiSACWIS\offline already exists.
  1 file(s) copied.
  1 file(s) copied.
  1 file(s) copied.
ADMA4006I: Expanding ATU\eSacwis.ear into C:\Progra~1\IBM\WebSphere\AppServer\pr
ofiles\default\installedApps\HFS00061935Node01Cell\eSacwis.ear
```

Upgrading eWiSACWIS Anywhere Software

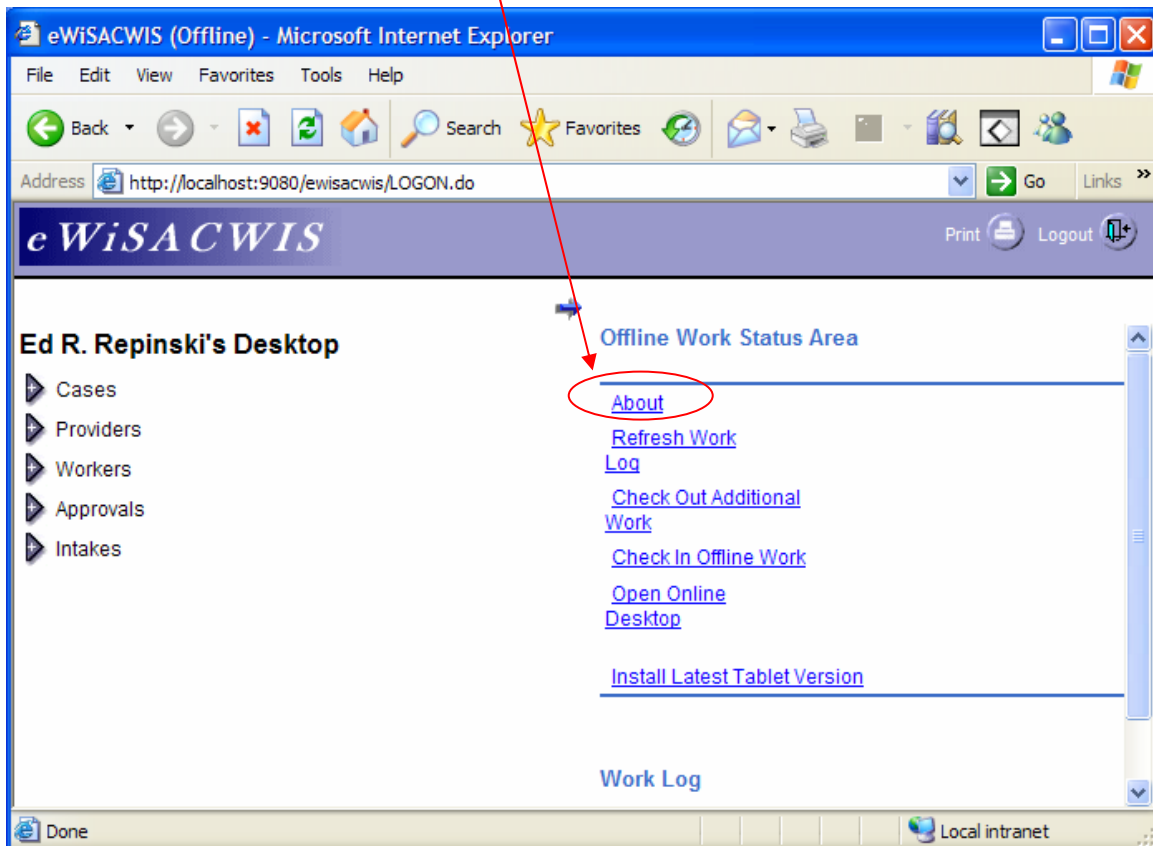
6. Once the install process has completed, you will see the message “Press any key to continue...” as the last line of text in this window. Press any key on your keyboard.



```
C:\WINDOWS\system32\cmd.exe
A subdirectory or file c:\eWiSACWIS\cache already exists.
A subdirectory or file c:\eWiSACWIS\offline already exists.
    1 file(s) copied.
    1 file(s) copied.
    1 file(s) copied.
ADMA40061: Expanding ATU\eSacwis.ear into C:\Program Files\IBM\WebSphere\AppServer\profiles\default\installedApps\HFS00061935Node01Cell\eSacwis.ear
ADMU77011: Because server1 is registered to run as a Windows Service, the request to start this server will be completed by starting the associated Windows Service.
ADMU01161: Tool information is being logged in file C:\Program Files\IBM\WebSphere\AppServer\profiles\default\logs\server1\startServer.log
ADMU01281: Starting tool with the default profile
ADMU31001: Reading configuration for server: server1
ADMU32001: Server launched. Waiting for initialization status.
ADMU30001: Server server1 open for e-business; process id is 2540
...
...
...
eWiSACWIS Tablet Upgraded Successfully....
Please close your original browser and open a new browser session.
The eWiSACWIS Tablet application is ready to use.
Press any key to continue . . .
```

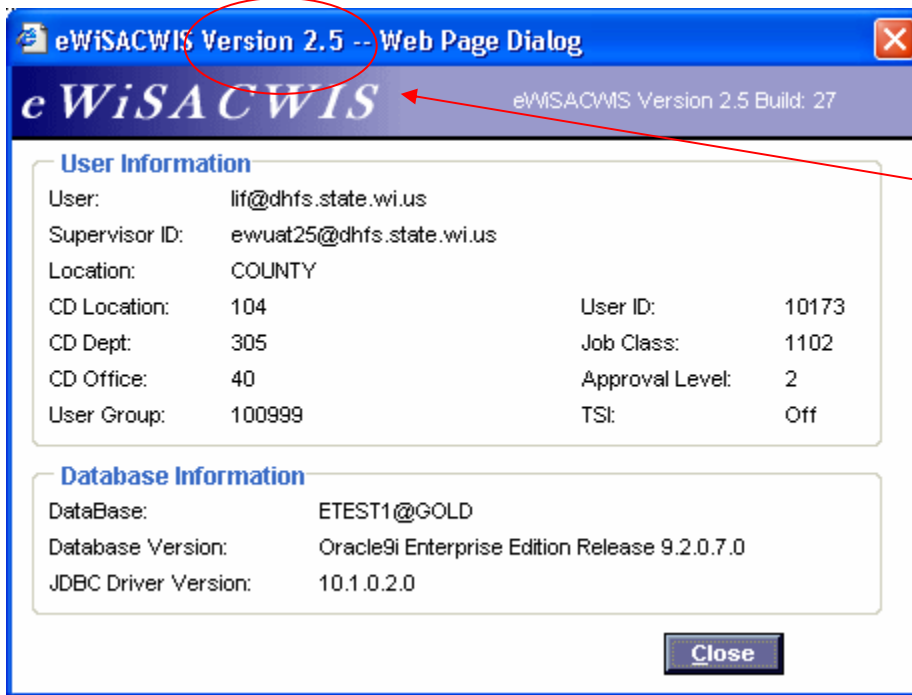
Upgrading eWiSACWIS Anywhere Software

7. Log out and then back in to eWiSACWIS Anywhere. To confirm you have successfully upgraded the software, click on the “About” hyperlink on the eWiSACWIS anywhere desktop.



Upgrading eWiSACWIS Anywhere Software

8. The following dialog box appears. It should read Version 2.X (X should equal the current version of eWiSACWIS) as pictured below. Verify and click Close. If the version appears as you would have expected, you have successfully upgraded the eWiSACWIS Anywhere software.



***Please contact the helpdesk if you encounter difficulties with the upgrade.**