

# **Appendices**

## APPENDIX A

**Child Maltreatment Related Statutes**

Following are excerpts from the Wisconsin statutes that create the basis for persons to report suspected child maltreatment and for child protective services agencies to respond. The excerpts are from the updated 2005-2006 Wisconsin statutes database. (**Note:** The excerpts appear exactly as they would appear in the published statutes. Therefore, other portions of the statutes not relevant to child maltreatment are included.)

Included in the excerpts are sections from chapter 48, known as the Children's Code, and sections from criminal statutes that are cross-referenced in the Children's Code in order to define child .

- **s. 48.01, Stats., Title and legislative purpose.**
- **s. 48.02, Stats., Definitions.** This includes definitions of child maltreatment.
- **s. 48.13, Stats., Jurisdiction over children alleged to be in need of protection or services.** This describes the basis on which the local child protective services agencies (county social/human services departments and the Bureau of Milwaukee Child Welfare) may petition the court to intervene with a family.
- **s. 48.981, Stats., Abused or neglected children and abused unborn children.** This section defines child neglect, describes the reporting requirements of alleged child maltreatment and describes the child protective services agencies' duties and responsibilities.
- **s. 939.22, Stats., Words and phrases defined.** This section defines terms that are used in describing certain crimes, some of which are cross-referenced in s. 48.02, Stats., in order to define child maltreatment.
- **s. 940.225, Stats., Sexual assault.** This defines the crime of sexual assault and is cross-referenced under s. 48.02(1)(b), Stats.
- **s. 944.30, Stats., Prostitution.** This defines the crime of prostitution and is cross-referenced under s. 48.02(1)(d), Stats.
- **s. 948.02, Stats., Sexual assault of a child.** This is the first in a series of crimes from chapter 948, known as Crimes Against Children that are cross-referenced under s. 48.02(1)(b), Stats., in order to define child sexual abuse. The following sections are also cross-referenced under s. 48.02(1), Stats.:
- **s. 948.025, Stats., Engaging in repeated acts of sexual assault of the same child.**
- **s. 948.05, Stats., Sexual exploitation of a child.**
- **s. 948.055, Stats., Causing a child to view or listen to sexual activity.**
- **s. 948.085, Stats., Sexual assault of a child placed in substitute care.**
- **s. 948.10, Stats., Exposing genitals or pubic area.**

The complete Wisconsin statutes can be viewed at the Wisconsin State Legislature website: <http://www.legis.state.wi.us/rsb/stats.html>.

## APPENDIX B

**Unborn Child Abuse**

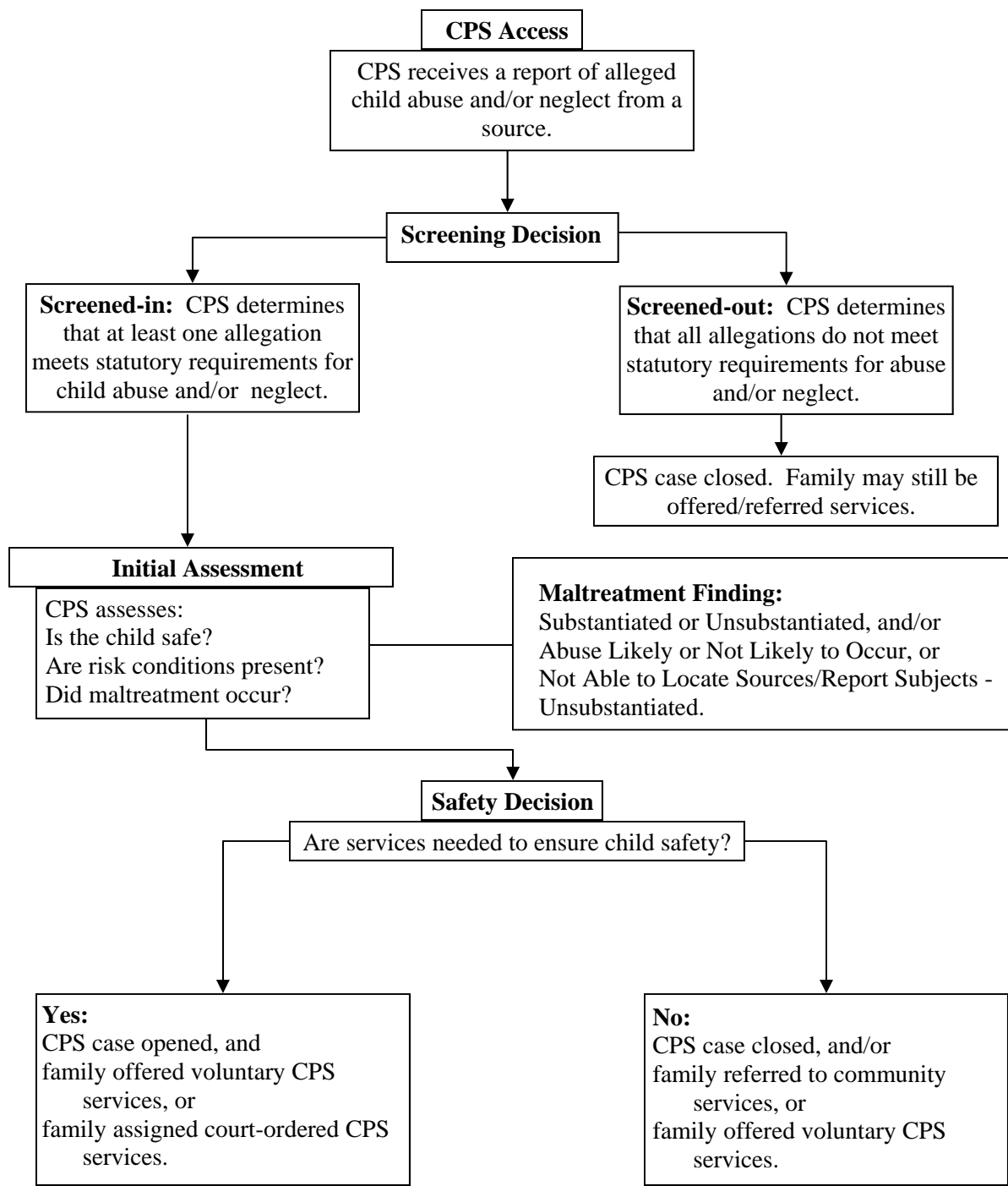
Unborn child abuse is defined as “serious physical harm inflicted on the unborn child, and the risk of serious physical harm to the child when born, caused by the habitual lack of self-control of the expectant mother of the unborn child in the use of alcohol beverages, controlled substances or controlled substance analogs, exhibited to a severe degree.” [Ref. s. 48.02(1)(am), Stats.]

The maltreatment allegation of unborn child abuse is excluded from maltreatment allegation counts in the body of this report and presented here separately.

- In calendar year 2006, CPS agencies screened-in 334 allegations of unborn child abuse for further assessment.
- The most common reporters of screened-in unborn child abuse allegations were social service workers (34%), legal/law enforcement (13%), medical personnel (10%), mental health professionals (9%), and relatives (8%).
- Thirty-seven of the 334 screened-in allegations (11%) of unborn child abuse were substantiated after the initial assessment.
- Of the 37 substantiated cases of unborn child abuse, 76% were opened or already opened for CPS services.
- Sixteen children were placed in out-of-home care after the child’s birth as a part of the CPS initial assessment of unborn child abuse.

## APPENDIX C

## An Overview of the CPS Process



## APPENDIX D

**Data Collection and Interpretation****Data Collection Process**

The child maltreatment data collected for calendar year 2006 is from the electronic Wisconsin Statewide Automated Child Welfare Information System (eWiSACWIS). eWiSACWIS allows case workers and administrators to manage child welfare services and contains information on CPS Access, initial assessment, case management, court process, out-of-home placements, and more. Compared with the previous child maltreatment data source, the Department of Health and Family Services form CFS-40, use of this new system greatly expands the type of data collected and also improves the timeliness and accuracy of child welfare data. The quality of the data in this report is dependent upon the accuracy and timeliness of data submitted by the local agencies.

The historical data in this report (prior to 2005) includes data from both eWiSACWIS and the CFS-40 forms. Previously, counties completed CFS-40 forms at the conclusion of CPS initial assessments and data was manually entered into a child maltreatment database. CPS agencies began using eWiSACWIS in 2001 and statewide rollout of the system was completed in 2004. The implications of using the more robust eWiSACWIS data and the transition from CFS-40 data to eWiSACWIS data are discussed in the next section.

**Data Interpretation**

Data for the 2006 edition of the Wisconsin Child Abuse and Neglect Report includes some cases in which the alleged maltreatment occurred in a previous year but was reported and assessed in 2006.

The 2006 Wisconsin Child Abuse and Neglect Report is the second year in which data was taken entirely from the eWiSACWIS system. As counties have increased experience using the eWiSACWIS system, the 2006 data has become more stable and reliable. In graphs which depict historical trends, differences in counts between calendar years 2004 and 2005 can be seen. These changes coincide with the change from the legacy CFS-40 data system to eWiSACWIS and may be attributable to differences in data entry practices between the two systems. For example, eWiSACWIS requires an allegation of maltreatment to be entered for any identified alleged maltreater. This difference in data entry practice is most likely to be seen in increased allegations of neglect and allegations of abuse is likely to occur as they more frequently involve multiple alleged maltreaters.

**Mutual Sexual Activity**

Mutual sexual activity by minors is excluded from all data tables and figures which depict calendar year 2005 and 2006 data. Mutual sexual activity by minors appears in counts in graphs which depict data prior to 2005. In 2006, there were 877 screened-in allegations of mutual sexual activity by minors.

### Other Abuse

In the beginning of calendar year 2006, "other abuse" was removed from eWiSACWIS as a maltreatment allegation type because it is not recognized in chapter 48 of Wisconsin statutes as a form of maltreatment. The calendar year 2006 edition of the Wisconsin Child Abuse and Neglect Report does not include 207 "other abuse" allegations. The maltreatment category "other abuse" was also excluded from calendar year 2005 and 2004 data. It appears in a small proportion of cases for data from 2001-2003. In the future, these instances of alleged maltreatment will be properly documented as one of the existing maltreatment allegation types.

## APPENDIX E

**Total Referrals and Screening Decisions by County, 2006**

<b>County</b>	<b>Total CPS Referrals</b>	<b>Screen-out CPS Referrals</b>	<b>Percent Screen-out</b>	<b>Screen-in CPS Referrals</b>	<b>Percent Screen-in</b>	<b>Screen-in Service Referrals*</b>	<b>Screen-out Service Referrals*</b>
Adams	184	91	49%	93	51%	171	129
Ashland	185	116	63%	69	37%	182	89
Barron	538	297	55%	241	45%	237	321
Bayfield	116	55	47%	61	53%	96	50
Brown	2,846	2,114	74%	732	26%	248	67
Buffalo	147	63	43%	84	57%	155	46
Burnett	158	106	67%	52	33%	104	63
Calumet	395	254	64%	141	36%	46	16
Chippewa	570	404	71%	166	29%	173	19
Clark	188	104	55%	84	45%	252	141
Columbia	209	18	9%	191	91%	798	309
Crawford	85	11	13%	74	87%	131	49
Dane	2,707	1,485	55%	1,222	45%	1,661	1,510
Dodge	238	12	5%	226	95%	362	11
Door	180	79	44%	101	56%	138	32
Douglas	811	487	60%	324	40%	258	54
Dunn	236	72	31%	164	69%	108	144
Eau Claire	1,151	893	78%	258	22%	306	377
Florence	38	10	26%	28	74%	14	0
Fond du Lac	542	26	5%	516	95%	696	304
Forest	33	11	33%	22	67%	130	94
Grant	440	162	37%	278	63%	308	34
Green	501	239	48%	262	52%	109	20
Green Lake	106	25	24%	81	76%	240	55
Iowa	271	132	49%	139	51%	267	24
Iron	14	4	29%	10	71%	39	4
Jackson	572	407	71%	165	29%	158	212
Jefferson	291	67	23%	224	77%	455	26
Juneau	185	40	22%	145	78%	175	17
Kenosha	814	183	22%	631	78%	935	241
Kewaunee	32	16	50%	16	50%	57	71
La Crosse	1,258	624	50%	634	50%	76	73
Lafayette	213	99	46%	114	54%	37	5
Langlade	531	118	22%	413	78%	286	66
Lincoln	304	174	57%	130	43%	272	71
Manitowoc	1,141	578	51%	563	49%	389	162
Marathon	1,107	608	55%	499	45%	867	45
Marinette	439	380	87%	59	13%	92	20
Marquette	102	29	28%	73	72%	116	71
Menominee	98	53	54%	45	46%	136	44
Milwaukee	12,326	3,231	26%	9,095	74%	2,577	1,270

## APPENDIX E (Continued)

County	Total CPS Referrals	Screen-out CPS Referrals	Percent Screen-out	Screen-in CPS Referrals	Percent Screen-in	Screen-in Service Referrals*	Screen-out Service Referrals*
Monroe	483	283	59%	200	41%	437	7
Oconto	264	132	50%	132	50%	270	38
Oneida	356	3	1%	353	99%	285	3
Outagamie	2,226	1,243	56%	983	44%	194	313
Ozaukee	321	96	30%	225	70%	50	52
Pepin	21	8	38%	13	62%	27	26
Pierce	319	168	53%	151	47%	211	97
Polk	559	315	56%	244	44%	323	46
Portage	322	130	40%	192	60%	290	12
Price	66	26	39%	40	61%	138	1
Racine	1,262	235	19%	1,027	81%	2,181	16
Richland	119	18	15%	101	85%	123	71
Rock	2,027	827	41%	1,200	59%	2,257	373
Rusk	270	150	56%	120	44%	160	41
Saint Croix	588	324	55%	264	45%	700	166
Sauk	437	171	39%	266	61%	525	398
Sawyer	132	43	33%	89	67%	91	76
Shawano	165	20	12%	145	88%	482	86
Sheboygan	1,097	518	47%	579	53%	1,130	20
Taylor	259	158	61%	101	39%	59	7
Trempealeau	309	185	60%	124	40%	98	55
Vernon	229	75	33%	154	67%	74	11
Vilas	90	3	3%	87	97%	111	72
Walworth	635	236	37%	399	63%	519	28
Washburn	101	44	44%	57	56%	132	18
Washington	385	196	51%	189	49%	373	406
Waukesha	1,103	497	45%	606	55%	175	99
Waupaca	505	225	45%	280	55%	371	51
Waushara	260	118	45%	142	55%	19	4
Winnebago	2,252	1,244	55%	1,008	45%	1,573	149
Wood	830	262	32%	568	68%	205	209
<b>STATE TOTAL</b>	<b>50,294</b>	<b>21,830</b>	<b>43%</b>	<b>28,464</b>	<b>57%</b>	<b>27,440</b>	<b>9,307</b>

\*Source: Data about service referrals was compiled using the WiSACWIS sm0201 Access Report. Service referrals represent contacts and decision made where CPS issues were not identified as part of the referral. Decisions about documentation of service referrals are not governed by statute and are determined by local agency practice.

## APPENDIX F

**CPS Reports Per 1,000 Children by County, 2006**

<b>County</b>	<b>Child Population (Ages 0-17)*</b>	<b>Number of CPS Reports</b>	<b>CPS Reports per 1,000 Population</b>
Adams	4,162	115	27.6
Ashland**	4,073	77	18.9
Barron	11,298	319	28.2
Bayfield	3,676	86	23.4
Brown	60,221	1,103	18.3
Buffalo	3,354	98	29.2
Burnett	3,428	64	18.7
Calumet	12,533	182	14.5
Chippewa	15,252	249	16.3
Clark**	9,913	103	10.4
Columbia	13,159	223	16.9
Crawford	4,328	108	25.0
Dane	98,860	1,681	17.0
Dodge	20,781	313	15.1
Door	6,100	126	20.7
Douglas	9,724	496	51.0
Dunn	9,410	246	26.1
Eau Claire	21,486	381	17.7
Florence	1,125	45	40.0
Fond du Lac	23,973	738	30.8
Forest	2,451	32	13.1
Grant	11,293	359	31.8
Green	9,081	352	38.8
Green Lake	4,400	95	21.6
Iowa	6,172	187	30.3
Iron	1,249	10	8.0
Jackson	4,539	254	56.0
Jefferson	19,135	329	17.2
Juneau	6,439	204	31.7
Kenosha	41,067	880	21.4
Kewaunee**	5,190	23	4.4
La Crosse	24,766	947	38.2
Lafayette	4,218	196	46.5
Langlade	4,926	668	135.6
Lincoln	7,321	157	21.4
Manitowoc	20,371	775	38.0
Marathon	33,739	710	21.0
Marinette	9,823	72	7.3
Marquette	3,150	89	28.3
Menominee	1,750	63	36.0
Milwaukee	233,802	13,654	58.4

## APPENDIX F (Continued)

<b>County</b>	<b>Child Population (Ages 0-17)*</b>	<b>Number of CPS Reports</b>	<b>CPS Reports per 1,000 Population</b>
Monroe	11,653	309	26.5
Oconto	9,466	150	15.8
Oneida	7,964	439	55.1
Outagamie	45,512	1,475	32.4
Ozaukee	21,921	341	15.6
Pepin	1,912	19	9.9
Pierce	9,182	191	20.8
Polk	11,261	337	29.9
Portage	15,806	256	16.2
Price	3,602	51	14.2
Racine	49,666	1,402	28.2
Richland	4,315	133	30.8
Rock	39,861	1,847	46.3
Rusk	3,648	171	46.9
Saint Croix	20,705	368	17.8
Sauk	14,738	363	24.6
Sawyer	3,930	125	31.8
Shawano	10,277	187	18.2
Sheboygan	28,119	894	31.8
Taylor	5,138	129	25.1
Trempealeau**	6,744	157	23.3
Vernon	7,694	232	30.2
Vilas	4,291	110	25.6
Walworth	23,091	569	24.6
Washburn	3,858	78	20.2
Washington	32,357	234	7.2
Waukesha	94,702	809	8.5
Waupaca	13,023	404	31.0
Waushara	5,542	206	37.2
Winnebago	36,746	1,671	45.5
Wood	18,677	828	44.3
<b>STATE TOTAL</b>	<b>1,357,139</b>	<b>41,294</b>	<b>30.4</b>

\***Source:** Wisconsin Department of Administration Population Estimate for 1/1/2006.

**NOTE:** This report only includes CPS reports which had a supervisor approved initial assessment as of August 3, 2006. 369 screened-in reports are not included in this report because they did not have an approved initial assessment as of that time.

\*\*Denotes counties in which more than 10% of their screened-in 2006 reports had an initial assessment which was not approved by a supervisor as of August 3, 2006.

## APPENDIX G

## County Substantiation Rates, 2006

County	Number of Initial Assessments	Number of CPS Reports	Maltreatment Substantiation Count	Maltreatment Substantiation Rate
Adams	92	115	18	15.7%
Ashland	69	77	15	19.5%
Barron	230	319	108	33.9%
Bayfield	58	86	20	23.3%
Brown	719	1,103	358	32.5%
Buffalo	81	98	20	20.4%
Burnett	52	64	8	12.5%
Calumet	136	182	56	30.8%
Chippewa	161	249	78	31.3%
Clark	83	103	36	35.0%
Columbia	190	223	40	17.9%
Crawford	74	108	45	41.7%
Dane	1,168	1,681	364	21.7%
Dodge	226	313	106	33.9%
Door	100	126	36	28.6%
Douglas	314	496	59	11.9%
Dunn	162	246	52	21.1%
Eau Claire	256	381	122	32.0%
Florence	28	45	45	100.0%
Fond du Lac	509	738	119	16.1%
Forest	21	32	20	62.5%
Grant	264	359	59	16.4%
Green	245	352	40	11.4%
Green Lake	78	95	25	26.3%
Iowa	133	187	34	18.2%
Iron	10	10	3	30.0%
Jackson	153	254	53	20.9%
Jefferson	222	329	115	35.0%
Juneau	141	204	27	13.2%
Kenosha	630	880	185	21.0%
Kewaunee	13	23	18	78.3%
La Crosse	588	947	141	14.9%
Lafayette	114	196	73	37.2%
Langlade	343	668	173	25.9%
Lincoln	130	157	13	8.3%
Manitowoc	535	775	199	25.7%
Marathon	489	710	180	25.4%
Marinette	59	72	17	23.6%
Marquette	63	89	22	24.7%
Menominee	44	63	10	15.9%
Milwaukee	8,470	13,654	1,874	13.7%

## APPENDIX G (Continued)

<b>County</b>	<b>Number of Initial Assessments</b>	<b>Number of CPS Reports</b>	<b>Maltreatment Substantiation Count</b>	<b>Maltreatment Substantiation Rate</b>
Monroe	200	309	46	14.9%
Oconto	126	150	25	16.7%
Oneida	348	439	103	23.5%
Outagamie	917	1,475	166	11.3%
Ozaukee	220	341	54	15.8%
Pepin	13	19	7	36.8%
Pierce	142	191	38	19.9%
Polk	233	337	74	22.0%
Portage	185	256	57	22.3%
Price	40	51	8	15.7%
Racine	1,014	1,402	236	16.8%
Richland	100	133	31	23.3%
Rock	1,091	1,847	237	12.8%
Rusk	120	171	9	5.3%
Saint Croix	255	368	64	17.4%
Sauk	236	363	60	16.5%
Sawyer	89	125	28	22.4%
Shawano	141	187	19	10.2%
Sheboygan	559	894	154	17.2%
Taylor	101	129	37	28.7%
Trempealeau	122	157	26	16.6%
Vernon	148	232	31	13.4%
Vilas	87	110	15	13.6%
Walworth	382	569	161	28.3%
Washburn	57	78	11	14.1%
Washington	188	234	40	17.1%
Waukesha	596	809	232	28.7%
Waupaca	265	404	37	9.2%
Waushara	139	206	24	11.7%
Winnebago	904	1,671	292	17.5%
Wood	547	828	177	21.4%
<b>STATE TOTAL</b>	<b>27,018</b>	<b>41,294</b>	<b>7,485</b>	<b>18.1%</b>

## Appendix H

## Child Victimization Rate by County, 2006

<b>County</b>	<b>Child Population (Ages 0-17)*</b>	<b>Number of Child Victims</b>	<b>Child Victims per 1,000 Population</b>
Adams	4,162	20	4.8
Ashland	4,073	13	3.2
Barron	11,298	77	6.8
Bayfield	3,676	19	5.2
Brown	60,221	354	5.9
Buffalo	3,354	17	5.1
Burnett	3,428	11	3.2
Calumet	12,533	53	4.2
Chippewa	15,252	89	5.8
Clark	9,913	31	3.1
Columbia	13,159	37	2.8
Crawford	4,328	46	10.6
Dane	98,860	397	4.0
Dodge	20,781	102	4.9
Door	6,100	32	5.2
Douglas	9,724	73	7.5
Dunn	9,410	70	7.4
Eau Claire	21,486	127	5.9
Florence	1,125	30	26.7
Fond du Lac	23,973	250	10.4
Forest	2,451	16	6.5
Grant	11,293	78	6.9
Green	9,081	36	4.0
Green Lake	4,400	24	5.5
Iowa	6,172	31	5.0
Iron	1,249	3	2.4
Jackson	4,539	42	9.3
Jefferson	19,135	108	5.6
Juneau	6,439	25	3.9
Kenosha	41,067	183	4.5
Kewaunee	5,190	12	2.3
La Crosse	24,766	182	7.3
Lafayette	4,218	68	16.1
Langlade	4,926	120	24.4
Lincoln	7,321	12	1.6
Manitowoc	20,371	167	8.2
Marathon	33,739	166	4.9
Marinette	9,823	40	4.1
Marquette	3,150	20	6.3
Menominee	1,750	10	5.7
Milwaukee	233,802	2,022	8.6

## APPENDIX H (Continued)

<b>County</b>	<b>Child Population (Ages 0-17)*</b>	<b>Number of Child Victims</b>	<b>Child Victims per 1,000 Population</b>
Monroe	11,653	76	6.5
Oconto	9,466	32	3.4
Oneida	7,964	99	12.4
Outagamie	45,512	184	4.0
Ozaukee	21,921	106	4.8
Pepin	1,912	6	3.1
Pierce	9,182	37	4.0
Polk	11,261	66	5.9
Portage	15,806	103	6.5
Price	3,602	19	5.3
Racine	49,666	294	5.9
Richland	4,315	35	8.1
Rock	39,861	444	11.1
Rusk	3,648	9	2.5
Saint Croix	14,738	136	9.2
Sauk	3,930	27	6.9
Sawyer	10,277	21	2.0
Shawano	28,119	192	6.8
Sheboygan	20,705	73	3.5
Taylor	5,138	32	6.2
Trempealeau	6,744	26	3.9
Vernon	7,694	51	6.6
Vilas	4,291	36	8.4
Walworth	23,091	175	7.6
Washburn	3,858	39	10.1
Washington	32,357	46	1.4
Waukesha	94,702	287	3.0
Waupaca	13,023	48	3.7
Waushara	5,542	25	4.5
Winnebago	36,746	286	7.8
Wood	18,677	196	10.5
<b>STATE TOTAL</b>	<b>1,357,139</b>	<b>8,419</b>	<b>6.2</b>

\*Source: Wisconsin Department of Administration Population Estimate for 1/1/2006.

## APPENDIX I

**Total Maltreatment Allegations by Maltreatment Type and  
Maltreatment Finding by County, 2006**

**ALLEGATIONS BY TYPE**

COUNTY	TOTAL REPORTS	NEGLECT				PHYSICAL ABUSE				SEXUAL ABUSE				EMOTIONAL ABUSE				ABUSE LIKELY TO OCCUR			
		S	U	N	Total	S	U	N	Total	S	U	N	Total	S	U	N	Total	L	NF	N	Total
ADAMS	115	8	35	3	46	3	38	2	43	7	28	11	46	0	1	0	1	6	2	2	10
ASHLAND	77	3	12	3	18	4	31	2	37	8	26	4	38	0	1	0	1	0	0	0	0
BARRON	319	72	173	14	259	8	57	4	69	27	44	19	90	1	11	0	12	6	2	2	10
BAYFIELD	86	9	24	11	44	0	20	1	21	11	18	3	32	0	0	0	0	6	0	0	6
BROWN	1,103	181	445	24	650	62	242	7	311	115	220	14	349	0	14	0	14	76	38	9	123
BUFFALO	98	5	25	0	30	0	31	1	32	15	27	4	46	0	9	1	10	2	2	0	4
BURNETT	64	2	33	0	35	1	19	3	23	5	6	3	14	0	1	0	1	4	1	0	5
CALUMET	182	30	90	3	123	4	45	3	52	22	44	4	70	0	5	0	5	4	14	0	18
CHIPPEWA	249	25	127	0	152	14	38	0	52	39	56	1	96	0	1	0	1	33	11	0	44
CLARK	103	15	31	0	46	6	31	0	37	15	17	2	34	0	0	0	0	2	2	1	5
COLUMBIA	223	4	24	2	30	9	73	4	86	27	89	3	119	0	9	0	9	1	3	0	4
CRAWFORD	108	24	47	0	71	4	18	0	22	17	18	0	35	0	4	0	4	3	3	0	6
DANE	1,681	199	514	36	749	60	498	7	565	103	253	14	370	2	16	0	18	151	260	18	429
DODGE	313	46	112	2	160	16	75	0	91	41	67	2	110	3	0	0	3	11	3	0	14
DOOR	126	5	59	0	64	14	31	0	45	17	30	0	47	0	0	0	0	0	0	0	0
DOUGLAS	496	20	307	8	335	13	107	3	123	26	82	5	113	0	4	0	4	31	18	3	52
DUNN	246	21	85	0	106	4	64	0	68	27	56	1	84	0	0	0	0	35	41	0	76
EAU CLAIRE	381	64	87	6	157	11	65	1	77	47	90	0	137	0	0	0	0	37	91	3	131
FLORENCE	45	25	16	0	41	7	5	0	12	4	4	0	8	9	0	0	9	23	5	0	28
FOND DU LAC	738	44	425	15	484	24	202	1	227	51	110	8	169	0	4	1	5	174	4	5	183
FOREST	32	15	9	0	24	2	4	0	6	2	4	0	6	1	2	0	3	0	0	0	0
GRANT	359	24	161	5	190	9	111	2	122	26	62	7	95	0	12	0	12	40	12	1	53
GREEN	352	29	197	6	232	4	109	6	119	7	37	2	46	0	8	0	8	10	55	0	65
GREEN LAKE	95	1	19	0	20	5	31	2	38	19	22	4	45	0	3	0	3	1	3	0	4
IOWA	187	12	109	4	125	5	65	3	73	17	33	1	51	0	1	0	1	5	17	0	22
IRON	10	1	0	0	1	2	7	0	9	0	1	0	1	0	0	0	0	1	0	0	1
JACKSON	254	28	175	1	204	6	75	0	81	16	55	1	72	3	32	0	35	7	13	0	20
JEFFERSON	329	55	155	5	215	10	61	0	71	48	64	10	122	2	0	0	2	6	3	2	11
JUNEAU	204	16	59	7	82	5	88	12	105	6	24	6	36	0	3	0	3	3	4	1	8
KENOSHA	880	51	243	23	317	69	347	13	429	63	135	22	220	2	0	0	2	17	11	2	30
KEWAUNEE	23	16	2	0	18	2	5	1	8	0	3	1	4	0	0	0	0	0	0	0	0
LA CROSSE	947	74	448	37	559	23	229	5	257	38	161	17	216	6	23	0	29	80	71	10	161
LAFAYETTE	196	47	80	0	127	9	51	1	61	17	34	0	51	0	3	0	3	23	13	0	36
LANGLADE	668	126	414	10	550	14	149	3	166	32	61	2	95	1	21	0	22	6	5	0	11
LINCOLN	157	3	58	10	71	2	44	1	47	8	42	12	62	0	0	0	0	0	1	0	1
MANITOWOC	775	122	395	8	525	23	236	2	261	54	138	3	195	0	10	0	10	32	63	2	97
MARATHON	710	72	449	5	526	17	144	1	162	87	95	1	183	4	4	0	8	6	10	0	16

## APPENDIX I (Continued)

## ALLEGATIONS BY TYPE

COUNTY	TOTAL REPORTS	NEGLECT				PHYSICAL ABUSE				SEXUAL ABUSE				EMOTIONAL ABUSE				ABUSE LIKELY TO OCCUR			
		S	U	N	Total	S	U	N	Total	S	U	N	Total	S	U	N	Total	L	NF	N	Total
MARINETTE	72	4	30	0	34	2	11	0	13	11	8	23	42	0	1	0	1	32	2	0	34
MARQUETTE	89	11	12	0	23	5	41	0	46	6	24	0	30	0	0	0	0	4	1	0	5
MENOMINEE	63	0	18	1	19	4	10	1	15	6	24	3	33	0	1	0	1	0	0	0	0
MILWAUKEE	13,654	761	5579	504	6,844	357	3,535	199	4,091	755	1,515	203	2,473	1	64	5	70	448	1,954	188	2,590
MONROE	309	19	185	0	204	10	48	0	58	17	41	3	61	0	1	0	1	41	48	1	90
OCONTO	150	4	21	1	26	3	52	1	56	18	53	3	74	0	2	0	2	7	3	0	10
ONEIDA	439	44	188	10	242	16	81	6	103	43	127	20	190	0	4	0	4	9	0	0	9
OUTAGAMIE	1,475	56	925	9	990	30	468	4	502	80	226	12	318	0	41	1	42	50	44	1	95
OZAUKEE	341	30	149	0	179	9	76	0	85	12	18	5	35	3	18	0	21	86	77	0	163
PEPIN	19	2	8	0	10	1	4	0	5	4	3	1	8	0	0	0	0	0	0	0	0
PIERCE	191	8	67	1	76	5	75	0	80	25	26	1	52	0	0	0	0	3	3	3	9
POLK	337	23	110	17	150	7	53	5	65	44	70	22	136	0	6	1	7	6	35	2	43
PORTAGE	256	16	131	2	149	9	37	1	47	28	55	5	88	4	8	1	13	69	20	6	95
PRICE	51	2	10	0	12		26	1	27	6	12	1	19	0	6	0	6	16	7	1	24
RACINE	1,402	61	497	46	604	35	342	27	404	140	225	35	400	0	4	0	4	92	150	18	260
RICHLAND	133	11	26	1	38	6	52	2	60	14	28	0	42	0	0	0	0	8	3	0	11
ROCK	1,847	113	551	16	680	43	437	11	491	81	255	14	350	0	3	0	3	343	605	17	965
RUSK	171	5	90	0	95	1	42	0	43	3	45	2	50	0	2	0	2	0	4	0	4
ST CROIX	368	30	178	0	208	8	80	2	90	26	57	4	87	0	4	0	4	21	45	0	66
SAUK	363	30	61	2	93	11	70	8	89	19	34	23	76	0	4	0	4	123	97	12	232
SAWYER	125	19	65	0	84	5	37	1	43	4	23	2	29	0	2	0	2	7	19	0	26
SHAWANO	187	6	71	0	77	1	48	0	49	12	47	0	59	0	5	0	5	2	1	0	3
SHEBOYGAN	894	86	413	24	523	19	171	5	195	43	131	2	176	6	51	0	57	88	102	11	201
TAYLOR	129	9	79	0	88	5	37	0	42	22	13	1	36	1	7	0	8	0	0	0	0
TREMPEALEAU	157	7	87	0	94	2	49	0	51	17	56	0	73	0	3	0	3	7	14	0	21
VERNON	232	12	152	6	170	11	47	0	58	8	30	1	39	0	7	0	7	30	10	0	40
VILAS	110	3	40	0	43	1	33	1	35	11	21	3	35	0	3	0	3	26	4	0	30
WALWORTH	569	68	187	9	264	34	144	3	181	59	72	2	133	0	7	0	7	55	72	0	127
WASHBURN	78	1	5	0	6	1	22	1	24	9	27	0	36	0	0	0	0	32	17	0	49
WASHINGTON	234	9	46	4	59	13	75	5	93	18	56	19	93	0	1	0	1	9	5	0	14
WAUKESHA	809	78	217	4	299	34	144	2	180	119	145	7	271	1	2	0	3	94	127	0	221
WAUPACA	404	8	164	6	178	9	99	3	111	20	94	2	116	0	24	0	24	14	46	3	63
WAUSHARA	206	10	153	0	163	1	70	0	71	13	31	2	46	0	4	0	4	5	20	0	25
WINNEBAGO	1,671	205	949	25	1,179	46	366	6	418	41	276	15	332	0	88	5	93	148	380	11	539
WOOD	828	68	391	6	465	36	193	4	233	73	102	9	184	0	9	0	9	58	85	12	155
STATE TOTALS*	41,294	3,313	17,499	942	21,754	1,251	10,521	390	12,162	2,871	6,226	632	9,729	50	584	15	649	2,775	4,781	347	7,903

\* The sum of the totals of each type of allegation may exceed the total number of reports because there may be more than one allegation per report. The totals for sexual abuse exclude cases of mutual sexual activity.

## APPENDIX J

**County Maltreatment Allegation Substantiation Rate By  
Maltreatment Type, 2006**

<b>County</b>	<b>Neglect Substantiation Rate</b>	<b>Physical Abuse Substantiation Rate</b>	<b>Sexual Abuse Substantiation Rate</b>	<b>Emotional Abuse Substantiation Rate</b>	<b>Abuse Likely to Occur Rate</b>
Adams	17%	7%	15%	0%	60%
Ashland	17%	11%	21%	0%	N/A
Barron	28%	12%	30%	8%	60%
Bayfield	20%	0%	34%	N/A	100%
Brown	28%	20%	33%	0%	62%
Buffalo	17%	0%	33%	0%	50%
Burnett	6%	4%	36%	0%	80%
Calumet	24%	8%	31%	0%	22%
Chippewa	16%	27%	41%	0%	75%
Clark	33%	16%	44%	N/A	40%
Columbia	13%	10%	23%	0%	25%
Crawford	34%	18%	49%	0%	50%
Dane	27%	11%	28%	11%	35%
Dodge	29%	18%	37%	100%	79%
Door	8%	31%	36%	N/A	N/A
Douglas	6%	11%	23%	0%	60%
Dunn	20%	6%	32%	N/A	46%
Eau Claire	41%	14%	34%	N/A	28%
Florence	61%	58%	50%	100%	82%
Fond du Lac	9%	11%	30%	0%	95%
Forest	63%	33%	33%	33%	N/A
Grant	13%	7%	27%	0%	75%
Green	13%	3%	15%	0%	15%
Green Lake	5%	13%	42%	0%	25%
Iowa	10%	7%	33%	0%	23%
Iron	100%	22%	0%	N/A	100%
Jackson	14%	7%	22%	9%	35%
Jefferson	26%	14%	39%	100%	55%
Juneau	20%	5%	17%	0%	38%
Kenosha	16%	16%	29%	100%	57%
Kewaunee	89%	25%	0%	N/A	N/A
La Crosse	13%	9%	18%	21%	50%
Lafayette	37%	15%	33%	0%	64%
Langlade	23%	8%	34%	5%	55%
Lincoln	4%	4%	13%	N/A	0%
Manitowoc	23%	9%	28%	0%	33%
Marathon	14%	10%	48%	50%	38%
Marinette	12%	15%	26%	0%	94%
Marquette	48%	11%	20%	N/A	80%
Menominee	0%	27%	18%	0%	N/A
Milwaukee	11%	9%	31%	1%	17%

## APPENDIX J (Continued)

<b>County</b>	<b>Neglect Substantiation Rate</b>	<b>Physical Abuse Substantiation Rate</b>	<b>Sexual Abuse Substantiation Rate</b>	<b>Emotional Abuse Substantiation Rate</b>	<b>Abuse Likely to Occur Rate</b>
Monroe	9%	17%	28%	0%	46%
Oconto	15%	5%	24%	0%	70%
Oneida	18%	16%	23%	0%	100%
Outagamie	6%	6%	25%	0%	53%
Ozaukee	17%	11%	34%	14%	53%
Pepin	20%	20%	50%	N/A	N/A
Pierce	11%	6%	48%	N/A	33%
Polk	15%	11%	32%	0%	14%
Portage	11%	19%	32%	31%	73%
Price	17%	0%	32%	0%	67%
Racine	10%	9%	35%	0%	35%
Richland	29%	10%	33%	N/A	73%
Rock	17%	9%	23%	0%	36%
Rusk	5%	2%	6%	0%	0%
Saint Croix	14%	9%	30%	0%	32%
Sauk	32%	12%	25%	0%	53%
Sawyer	23%	12%	14%	0%	27%
Shawano	8%	2%	20%	0%	67%
Sheboygan	16%	10%	24%	11%	44%
Taylor	10%	12%	61%	13%	N/A
Trempealeau	7%	4%	23%	0%	33%
Vernon	7%	19%	21%	0%	75%
Vilas	7%	3%	31%	0%	87%
Walworth	26%	19%	44%	0%	43%
Washburn	17%	4%	25%	N/A	65%
Washington	15%	14%	19%	0%	64%
Waukesha	26%	19%	44%	33%	43%
Waupaca	4%	8%	17%	0%	22%
Waushara	6%	1%	28%	0%	20%
Winnebago	17%	11%	12%	0%	27%
Wood	15%	15%	40%	0%	37%
<b>STATE TOTAL</b>	<b>15%</b>	<b>10%</b>	<b>30%</b>	<b>8%</b>	<b>35%</b>

**NOTE:** Refer to Appendix I for counts of maltreatment allegations.

## APPENDIX K

## Percentage of Initial Assessments by Type by County, 2006

County	Total Initial Assessments	Primary Caregiver Initial Assessments	Percent Primary	Secondary Initial Assessments/ Non-Caregiver Investigations	Percent Secondary/ Non-Caregiver
Adams	92	66	72%	26	28%
Ashland	69	29	42%	40	58%
Barron	230	188	82%	42	18%
Bayfield	58	37	64%	21	36%
Brown	719	549	76%	170	24%
Buffalo	81	64	79%	17	21%
Burnett	52	46	88%	6	12%
Calumet	136	136	100%	0	0%
Chippewa	161	110	68%	51	32%
Clark	83	51	61%	32	39%
Columbia	190	97	51%	93	49%
Crawford	74	48	65%	26	35%
Dane	1,168	1,008	86%	160	14%
Dodge	226	178	79%	48	21%
Door	100	77	77%	23	23%
Douglas	314	225	72%	89	28%
Dunn	162	106	65%	56	35%
Eau Claire	256	201	79%	55	21%
Florence	28	21	75%	7	25%
Fond du Lac	509	509	100%	0	0%
Forest	21	17	81%	4	19%
Grant	264	218	83%	46	17%
Green	245	209	85%	36	15%
Green Lake	78	39	50%	39	50%
Iowa	133	90	68%	43	32%
Iron	10	7	70%	3	30%
Jackson	153	127	83%	26	17%
Jefferson	222	165	74%	57	26%
Juneau	141	104	74%	37	26%
Kenosha	630	627	100%	3	0%
Kewaunee	13	12	92%	1	8%
La Crosse	588	459	78%	129	22%
Lafayette	114	92	81%	22	19%
Langlade	343	280	82%	63	18%
Lincoln	130	85	65%	45	35%
Manitowoc	535	422	79%	113	21%
Marathon	489	365	75%	124	25%
Marinette	59	34	58%	25	42%
Marquette	63	49	78%	14	22%
Menominee	44	21	48%	23	52%
Milwaukee	8,470	7,091	84%	1,379	16%

## APPENDIX K (Continued)

<b>County</b>	<b>Total Initial Assessments</b>	<b>Primary Caregiver Initial Assessments</b>	<b>Percent Primary</b>	<b>Secondary Initial Assessments/ Non-Caregiver Investigations</b>	<b>Percent Secondary/ Non-Caregiver</b>
Monroe	200	176	88%	24	12%
Oconto	126	74	59%	52	41%
Oneida	348	220	63%	128	37%
Outagamie	917	730	80%	187	20%
Ozaukee	220	194	88%	26	12%
Pepin	13	5	38%	8	62%
Pierce	142	107	75%	35	25%
Polk	233	129	55%	104	45%
Portage	185	149	81%	36	19%
Price	40	28	70%	12	30%
Racine	1,014	845	83%	169	17%
Richland	100	73	73%	27	27%
Rock	1,091	875	80%	216	20%
Rusk	120	93	78%	27	23%
Saint Croix	255	196	77%	59	23%
Sauk	236	187	79%	49	21%
Sawyer	89	61	69%	28	31%
Shawano	141	91	65%	50	35%
Sheboygan	559	458	82%	101	18%
Taylor	101	71	70%	30	30%
Trempealeau	122	87	71%	35	29%
Vernon	148	132	89%	16	11%
Vilas	87	56	64%	31	36%
Walworth	382	287	75%	95	25%
Washburn	57	42	74%	15	26%
Washington	188	128	68%	60	32%
Waukesha	596	595	100%	1	0%
Waupaca	265	197	74%	68	26%
Waushara	139	118	85%	21	15%
Winnebago	904	751	83%	153	17%
Wood	547	424	78%	123	22%
<b>STATE TOTAL</b>	<b>27,018</b>	<b>21,838</b>	<b>81%</b>	<b>5,180</b>	<b>19%</b>

## APPENDIX L

**Where to Report**

Listed below are the County Departments of Health and Human Services or Social Services that receive and assess child maltreatment reports. Such reports may also be made to law enforcement agencies.

Adams County Department of Health  
& Social Services  
108 E. North Street  
P.O. Box 500  
Friendship WI 53934-0500  
Office Hours: 608-339-3356  
After Hours: 608-339-3304

Buffalo County Department of Health  
& Human Services  
407 S. Second St.  
P.O. Box 517  
Alma WI 54610-0517  
Office Hours: 608-685-4412  
After Hours: 608-685-4433

Ashland County Department of  
Human Services  
301 Ellis Ave.  
Ashland WI 54806  
Office Hours: 715-682-7004  
After Hours: 715-682-7023

Burnett County Department of Health  
& Human Services  
County Government Center  
7410 County Road K #280  
Siren WI 54872  
Office Hours: 715-349-7600 or 715-  
349-2131 After Hours: 715-349-2121

Barron County Department of Health  
& Human Services  
330 East LaSalle Ave., Rm. 338  
Barron WI 54812  
Office Hours: 715-537-5691  
After Hours: 715-537-3106

Calumet County Department of  
Human Services  
206 Court Street  
Chilton WI 53014  
Office Hours: 920-849-1400  
After Hours: 920-832-4646

Bayfield County Department of  
Human Services  
P.O. Box 100  
Washburn WI 54891-0100  
Office Hours: 715-373-6144  
After Hours: 715-373-6120

Chippewa County Department of  
Human Services  
711 N. Bridge Street, Room 306  
Chippewa Falls WI 54729  
Office Hours: 715-726-7799  
After Hours: 715-726-7830

Brown County Department of Human  
Services  
111 N. Jefferson Street  
P.O. Box 22188  
Green Bay WI 54305-2188  
Office Hours: 920-448-6035  
After Hours: 920-448-3200

Clark County Department of Social  
Services  
517 Court Street, P.O. Box 190  
Neillsville WI 54456  
Office Hours: 715-743-5233  
After Hours: 715-743-3157

Columbia County Department of Health & Human Services  
 P.O. Box 136  
 Portage WI 53901  
 Office Hours: 608-742-9227  
 After Hours: 608-742-7227

Crawford County Department of Human Services  
 111 W. Dunn Street  
 Prairie du Chien WI 53821  
 Office Hours: 608-326-0248  
 After Hours: 608-326-0241

Dane County Department of Human Services  
 Children, Youth & Family Intake  
 2322 S. Park Street  
 Madison WI 53713  
 Office Hours: 608-261-5437  
 After Hours: 608-255-6067

Dodge County Department of Human Services  
 County Office Building  
 143 E. Center Street  
 Juneau WI 53039-1330  
 Office Hours: 920-386-3750  
 After Hours: 920-887-6713

Door County Department of Social Services  
 421 Nebraska Street, P.O. Box 670  
 Sturgeon Bay WI 54235  
 Office Hours: 920-746-2300  
 After Hours: 920-746-2400

Douglas County Department of Health & Human Services  
 1313 Belknap Street, Room 207  
 Superior WI 54880  
 Office Hours: 715-395-1304  
 After Hours: 715-395-1371

Dunn County Department of Human Services  
 808 Main Street, P.O. Box 470  
 Menomonie WI 54751  
 Office Hours: 715-232-1116  
 After Hours: 715-232-5987

Eau Claire County Department of Human Services  
 721 Oxford Ave., P.O. Box 840  
 Eau Claire WI 54702-840  
 Office Hours: 715-831-5700  
 After Hours: 715-839-4972

Florence County Department of Human Services  
 501 Lake Ave., P.O. Box 170  
 Florence WI 54121  
 Office Hours: 715-528-3296  
 After Hours: 715-528-3346

Fond du Lac County Department of Social Services  
 87 Vincent Street P.O. Box 1196  
 Fond du Lac WI 54936-1196  
 Office Hours: 920-929-3400  
 After Hours: 920-929-3391

Forest County Department of Social Services  
 Forest County Courthouse  
 200 E. Madison St.  
 Crandon WI 54520  
 Office Hours: 715-478-3351  
 After Hours: 715-478-3331

Grant County Department of Social Services  
 8820 Hwy. 35 & 61 South  
 P.O. Box 447  
 Lancaster WI 53813  
 Office Hours: 608-723-2136  
 After Hours: 608-723-2157

Green County Department of Human Services  
 N3152 Highway 81, Pleasant View Complex  
 Monroe WI 53566  
 Office Hours: 608-328-9399 or 608-328-9393  
 After Hours: 608-328-9393

Green Lake County Department of Health & Human Services  
500 Lake Steel Street  
Green Lake WI 54941  
Office Hours: 920-294-4070  
After Hours: 920-294-4000

Iowa County Department of Social Services  
109 W. Fountain St.  
Dodgeville WI 53533  
Office Hours: 608-935-9311  
After Hours: 608-935-3314

Iron County Department of Human Services  
Courthouse  
300 Taconite Street  
Hurley WI 54534  
Office Hours: 715-561-3636 or 715-561-3637 or 715-561-4168  
After Hours: 715-561-3800

Jackson County Department of Health and Human Services  
420 Highway 54 West  
P.O. Box 457  
Black River Falls WI 54615  
Office Hours: 715-284-4301  
After Hours: 715-284-5357

Jefferson County Human Services Department  
N3995 Annex Road  
Jefferson WI 53549  
Office/After Hours: 920-674-3105

Juneau County Department of Human Services  
Courthouse Annex  
220 E. LaCrosse St.  
Mauston WI 53948  
Office Hours: 608-847-2400  
After Hours: 608-847-6161

Kenosha County Department of Human Services  
8600 Sheridan Road, Suite 200  
Kenosha WI 53140  
Office Hours: 262-605-6582  
After Hours: 262-657-7188

Kewaunee County Department of Human Services  
510 Kilbourn Street  
Kewaunee WI 54216  
Office Hours: 920-388-3777  
After Hours: 920-388-3100

LaCrosse County Human Services Department  
300 North 4th Street, P.O. Box 4002  
LaCrosse WI 54602  
Office Hours: 608-785-6050 or 785-6054  
After Hours: 608-785-9634

Lafayette County Department of Human Services  
627 Main Street  
Darlington WI 53530  
Office Hours: 608-776-4800  
After Hours: 608-776-4848

Langlade County Department of Social Services  
Langlade County Health Service Center  
1225 Langlade Road  
Antigo WI 54409  
Office Hours: 715-627-6500  
After Hours: 715-623-4111

Lincoln County Department of Social Services  
607 N. Sales St.  
P.O. Box 547  
Merrill WI 54452  
Office Hours: 715-536-6200  
After Hours: 715-536-6272

Manitowoc County Human Services Department  
926 South 8th Street  
P.O. Box 1177  
Manitowoc WI 54220  
Office Hours: 920-683-4230  
After Hours: 920-323-2448

Marathon County Department of  
Social Services  
400 E. Thomas Street  
Wausau WI 54403  
Office Hours: 715-261-7500  
After Hours: 715-261-1200

Marinette County Department of  
Health & Human Services  
2500 Hall Avenue, Suite B  
Marinette WI 54143  
Office Hours: 715-732-7700  
After Hours: 715-732-7600

Marquette County Department of  
Human Services  
428 Underwood Avenue  
P.O. Box 405  
Montello WI 53949  
Office Hours: 608-297-9135  
After Hours: 608-297-2115

Menominee County Department of  
Human Services  
Social Services Building, Hwy 47  
P.O. Box 280  
Keshena WI 54135  
Office Hours: 715-799-3861 or 715-  
799-5353  
After Hours: 715-799-3861

Bureau of Milwaukee Child Welfare  
1555 Rivercenter Drive  
Suite 220  
Milwaukee WI 53212  
Office Hours: 414-220-SAFE (7233)  
After Hours: 414-220-SAFE (7233)

Monroe County Department of Human  
Services  
Community Services Center A-19  
14301 County Highway B  
Sparta WI 54656  
Office Hours: 608-269-8630  
After Hours: 911

Oconto County Department of Human  
Services  
501 Park Ave.  
Oconto WI 54153-1612  
Office Hours: 920-834-7000  
After Hours: 920-834-6900

Oneida County Department of Social  
Services  
P.O. Box 400-Courthouse  
Rhineland WI 54501  
Office Hours: 715-362-5695  
After Hours: 715-361-5100

Outagamie County Department of  
Health and Human Services  
401 South Elm Street  
Appleton, WI 54911  
Office Hours: 920-832-5161  
After Hours: 920-832-4646

Ozaukee County Department of  
Social Services  
121 W. Main Street  
P.O. Box 994  
Port Washington WI 53074-0994  
Office Hours: 262-284-8200  
After Hours: 262-238-8436

Pepin County Department of Human  
Services  
740 7th Ave. West  
Durand WI 54736  
Office Hours: 715-672-8941  
After Hours: 715-672-5944

Pierce County Department of Health &  
Human Services  
412 W. Kinne St.  
P.O. Box 670  
Ellsworth WI 54011  
Office Hours: 715-273-6766  
After Hours: 715-273-5051

Polk County Department of Human  
Services  
300 Polk County Plaza, Suite 110  
Balsam Lake WI 54810-0219  
Office Hours: 715-485-8400  
After Hours: 715-485-8300

Portage County Department of Health  
& Human Services  
817 Whiting Avenue  
Stevens Point WI 54481  
Office Hours: 715-345-5350  
After Hours: 715-345-5350

Price County Human Services  
Department  
104 South Eyder Avenue  
P.O. Box 88  
Phillips WI 54555  
Office Hours: 715-339-2158  
After Hours: 715-339-3011

Racine County Human Services  
Department  
1717 Taylor  
Racine WI 53403  
Office Hours/After Hours: 262-638-  
6321

Richland County Department of  
Health & Human Services  
221 West Seminary  
Richland Center WI 53581  
Office Hours: 608-647-8821  
After Hours: 608-647-2106

Rock County Human Services  
Department  
3530 N. County Trunk F  
P.O. Box 1649  
Janesville WI 53547-1649  
Office Hours: 608-757-5401  
After Hours: 608-757-2244

Rusk County Department of Health &  
Human Services  
Courthouse  
311 East Miner Suite C-240  
Ladysmith WI 54848  
Office Hours: 715-532-2299  
After Hours: 715-532-2299

Sauk County Department of Human  
Services  
505 Broadway, 4<sup>th</sup> Floor  
P.O. Box 29  
Baraboo WI 53913  
Office Hours: 608-355-4200  
After Hours: 1-800-533-5692

Sawyer County Department of Health  
& Human Services  
105 E. 4th Street, P.O. Box 730  
Hayward WI 54843  
Office Hours: 715-634-4806  
After Hours: 715-634-4858

Shawano County Department of  
Social Services  
P.O. Box 434  
Shawano WI 54166  
Office Hours: 715-526-4700  
After Hours: 715-526-3100

Sheboygan County Health & Human  
Services Department  
1011 North 8th Street  
Sheboygan WI 53081  
Office Hours: 920-459-6418  
After Hours: 414-459-3111

St. Croix County Department of  
Health & Human Services  
1445 North 4<sup>th</sup> Street  
New Richmond WI 54017  
Office Hours: 715-246-6991  
After Hours: 715-246-6991

Taylor County Human Services  
Department  
340 East College Street  
Medford WI 54451  
Office Hours: 715-748-3332  
After Hours: 715-748-2200

Trempealeau County Department of  
Social Services  
Courthouse, P.O. Box 67  
Whitehall WI 54773  
Office Hours: 715-538-2311 ext. 290  
After Hours: 715-538-4351

Vernon County Department of Human Services  
E 7419 County Home Road, P.O. Box 823  
Viroqua WI 54665  
Office Hours: 608-637-5210  
After Hours: 608-637-2124

Vilas County Department of Social Services  
330 Court Street  
Eagle River WI 54521  
Office Hours: 715-479-3668  
After Hours: 715-479-4441

Walworth County Department of Health & Human Services  
W3955 Hwy NN, Box 1005  
Elkhorn WI 53121  
Office Hours: 262-741-3200/1-800-365-1587  
After Hours: 262-741-3200/1-800-365-1587

Washburn County Department of Health & Human Services  
P.O. Box 250  
Shell Lake WI 54871  
Office Hours: 715-468-4747  
After Hours: 715-468-2721

Washington County Department of Social Services  
333 E. Washington St.  
Suite 3100  
West Bend WI 53095  
Office Hours: 262-335-4610  
After Hours: 262-335-4670

Waukesha County Department of Health & Human Services  
500 Riverview Ave.  
Waukesha WI 53188  
Office Hours: 262--548-7212/548-7666  
After Hours: 262-547-7731

Waupaca County Department of Health & Human Services  
811 Harding Street  
Waupaca WI 54981-2087  
Office Hours: 715-258-6300  
After Hours: 715-258-4466

Waushara County Department of Social Services  
P.O. Box 1230  
Wautoma WI 54982-1230  
Office Hours: 920-787-3303  
After Hours: 920-787-3321

Winnebago County Department of Human Services  
220 Washington Avenue  
P.O. Box 2925  
Oshkosh WI 54903-2925  
Office Hours: 920-236-4600  
After Hours: 920-233-7707

Wood County Department of Social Services  
(South Wood County Office)  
Courthouse, 400 Market Street  
P.O. Box 8095  
Wisconsin Rapids WI 54495-8095  
Office Hours: 715-421-8600  
After Hours: 715-421-8600

**PFS-2013O (01/08)**