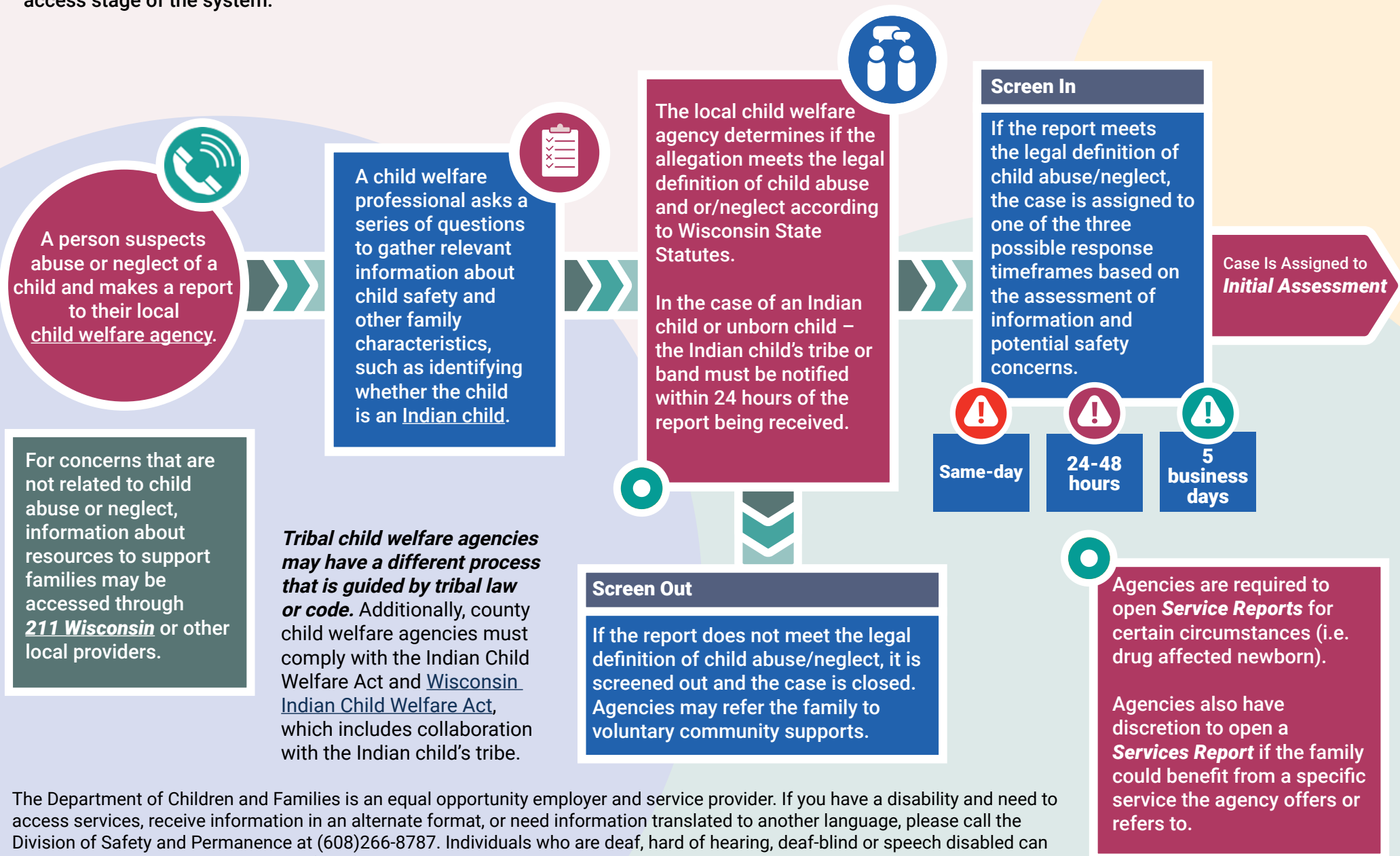


Wisconsin's child welfare system is divided into three stages - access, initial assessment, and ongoing. The access stage is where local and tribal child welfare agencies receive information about suspected child maltreatment from community members and mandated reporters. Using this information, they determine whether a report should move to the next stage - initial assessment. The below infographic showcases how a case moves through the access stage of the system.



The Department of Children and Families is an equal opportunity employer and service provider. If you have a disability and need to access services, receive information in an alternate format, or need information translated to another language, please call the Division of Safety and Permanence at (608)266-8787. Individuals who are deaf, hard of hearing, deaf-blind or speech disabled can use the free Wisconsin Relay Service (WRS) – 711 to contact the department.